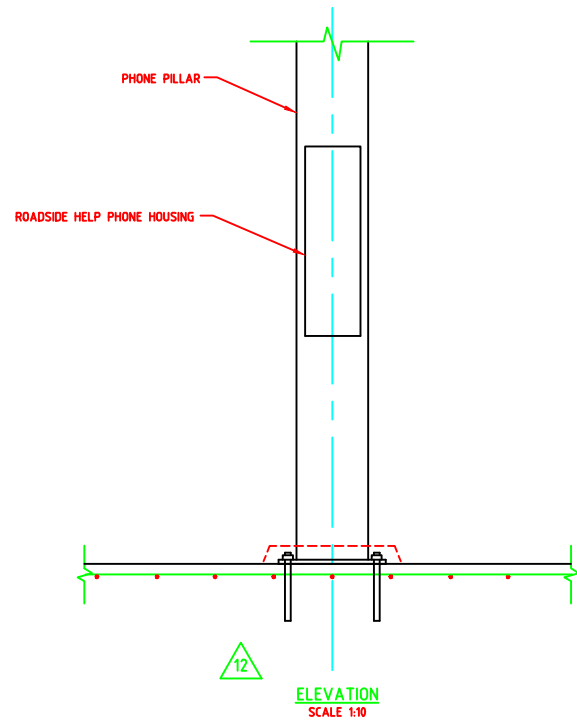
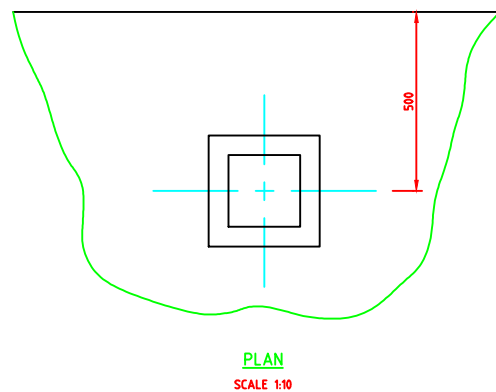


12 TYPICAL SECTIONAL VIEW A-A
SCALE 1:20

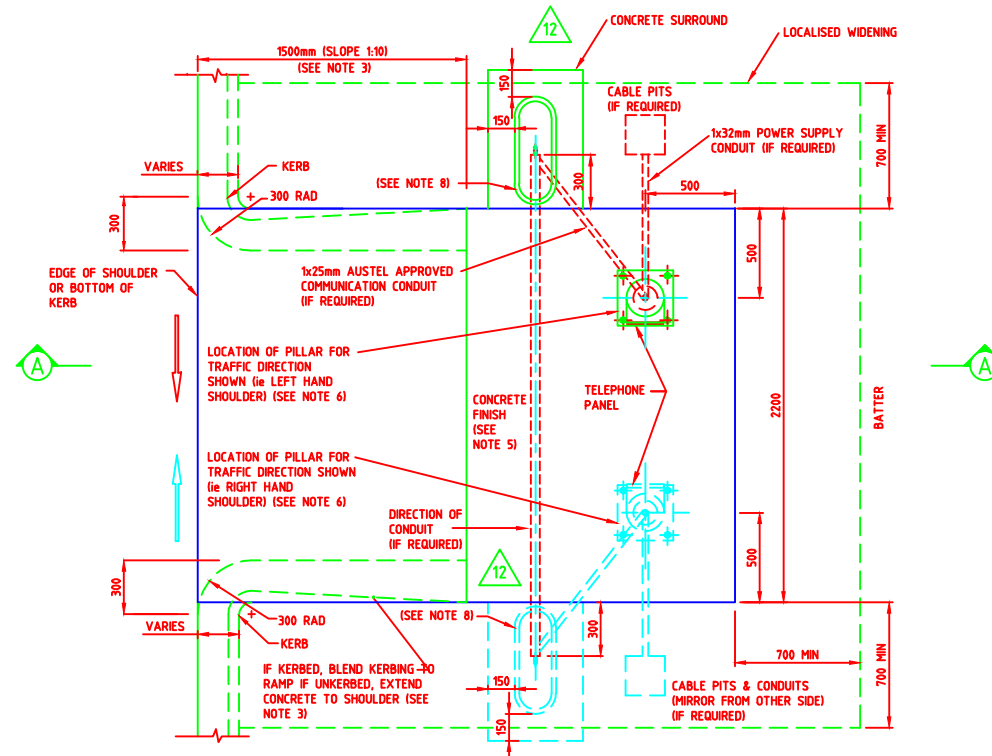


ELEVATION
SCALE 1:10

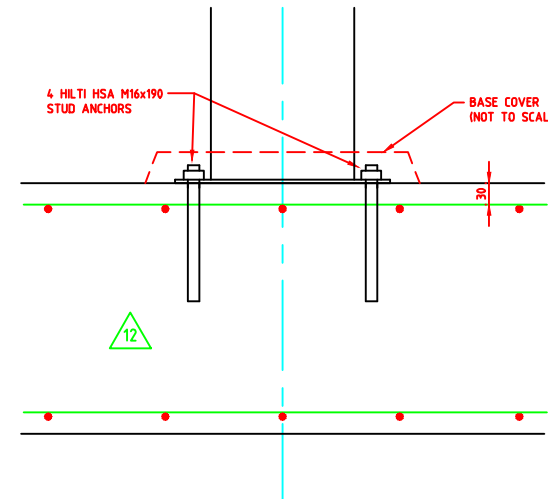


PLAN
SCALE 1:10

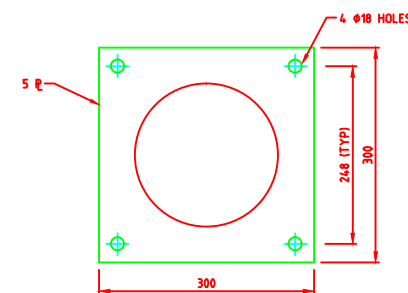
ROADSIDE HELP PHONE PILLAR



SLAB DETAIL FOR
ROADSIDE HELP PHONE PILLAR
SCALE 1:20



12



BASE PLATE DETAIL

12 ANCHOR BOLT DETAIL FOR
ROADSIDE HELP PHONE PILLAR
SCALE 1:5

AMENDMENTS			
No.	DATE	DESCRIPTION	APPROVED
1	FEB'93	CONDUIT DEPTH 450 WAS 600 AND CABLE PIT MODIFIED.	G.J.B.
2	MAY'93	FOOTING CONCRETE WAS 535 AND CONCRETE SLAB WAS 50 THICK.	G.J.B.
3	11.06.93	NOTE 8 ADDED.	T.H.
4	16.06.93	NOTE 8 CHANGED AND NOTE 9 ADDED.	M.J.B.
5	12.08.93	CHANGED RAMP LINE.	K.R.S.
6	0.09.93	ADDITIONAL PILLAR LOCATION SHOWN.	M.J.B.
7	24.07.02	NOTE 10 DIMENSION, TEXT SIZE AND ELEVATION DETAIL ALTERED.	R. GROVE
8	17.04.03	TITLE, NOTE, DIMENSION, PLAN AND ELEVATION DETAIL ALTERED. NON-CABLED DETAILS & INSTALLATION COMBINED.	B. CHARELUO
9	23.10.03	AMENDMENTS TO TITLE BLOCK, TITLE, NOTE, SCALE, DRAWING SIZE, DIMENSIONS, PLAN & ELEVATION, SLAB, RAMP, PHONE LOCATION, ANCHOR BOLTS COMBINED.	B. CHARELUO
10	12/1/04	TITLE BLOCK, NOTES, ANCHOR BOLT DETAILS CHANGED. POWER SUPPLY, LIGHTING COLUMNS AND TELEPHONE PILLAR DETAILS ADDED.	B. CHARELUO
11	7/4/04	F72 MESH TYPE CHANGED TO SL72 MESH TYPE, NOTE 16 ADDED.	B. CHARELUO
12	26/11/12	NOTES 4, 11, 12, 15, 16 REMOVED & 3-8 ADDED. IMPACT ANCHORS & SLIP BASE STILES REMOVED. CONCRETE FOOTING & TIE BARS DETAILS REMOVED, ANCHOR BOLT DETAIL ADDED, LOCALISED WIDENING DETAIL & CONDUIT NOTE ADDED TO SLAB DETAIL.	

- NOTES
- THIS DRAWING SHALL BE READ IN CONJUNCTION WITH SPECIFICATION 702.
 - DAMPEN GROUND AND COMPACT TO 6 BLOWS PER 300mm FOR 600mm USING A STANDARD PERTH PENETROMETER BEFORE POURING SLAB.
 - TOP OF SLAB SHALL BE LEVEL WITH TOP OF KERB. IF NO KERB, SLAB SHALL BE LEVEL WITH THE ROAD PAVEMENT (+10mm) - SLAB SHALL BE LEVEL AND NOT FOLLOW ANY GROUND SLOPE.
 - FOR KERB DIMENSION SEE DRAWING No. 9331-0376.
 - TOP OF SLAB AND RAMP SHALL BE A WOOD FLOATED SURFACE WITH A BROOMED FINISH PARALLEL TO THE TRAFFIC DIRECTION. (GROOVES 1-4mm DEEP WITH 2-6mm SPACING).
 - PILLAR SHALL BE PLACED SUCH THAT THE USER FACES BOTH ONCOMING TRAFFIC AND TELEPHONE PANEL.
 - CABLE PITS SHALL BE VISCOUNT INDUSTRIES SIZE P2 PLASTIC CABLE PITS (OR SIMILAR APPROVED). THE LOCATION OF CABLE PITS IS TO BE DETERMINED ON SITE AND LOCATED OVER EXISTING POWER AND /OR COMMUNICATION LINES.
 - ONLY APPLIES TO THE MAINS POWERED AND/OR NON-WIRELESS, COPPER, TELECOMMUNICATION INSTALLATIONS.
 - FABRIC OVERLAP SHALL BE A MINIMUM OF TWO CROSS WIRES ON BOTH SHEETS.
 - REINFORCEMENT FABRIC SHALL BE: SL81 500MPa MESH TO AS/NZS 4671.

Government of Western Australia
MAIN ROADS
 Western Australia
 TECHNOLOGY AND ENVIRONMENT DIRECTORATE
 ROAD AND TRAFFIC ENGINEERING BRANCH
 WATERLOO CRESCENT EAST PERTH 6004
 Telephone (08) 9323 4111 Fax (08) 9323 4449

FILE NUMBER	85-15-V2
DESIGNED / DRAWN	G.J. BARLOW NOV'92
VERIFIED	F. WINKLER NOV'92
APPROVED	R. BROWN NOV'92

STANDARD DRAWING
 ROADSIDE HELP PHONE
 GENERAL ARRANGEMENT,
 FOUNDATION AND BASE DETAILS

LOCAL AUTHORITY
 DRAWING NUMBER AMENDMENT

9220-670-12

SCALE 1:5 0 50mm 100 150 200 250 300 350 400 450 500 550 600 650 700 750 800 850 900 1000 1100 1200 1300 1400 1500
 MICROPLA DATE A 1