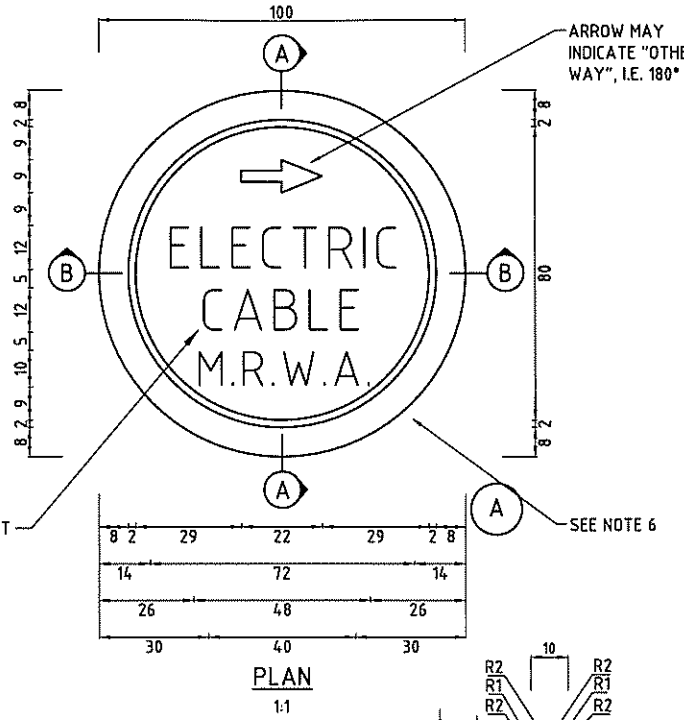
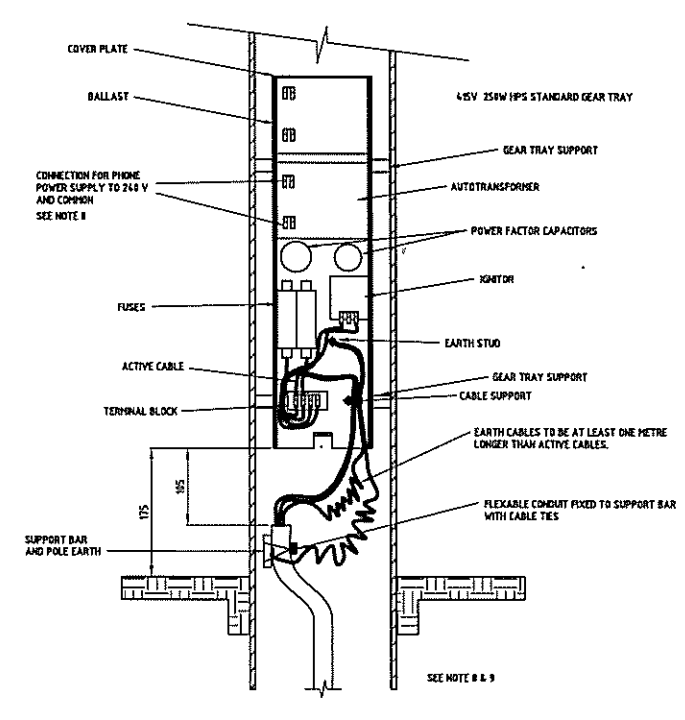


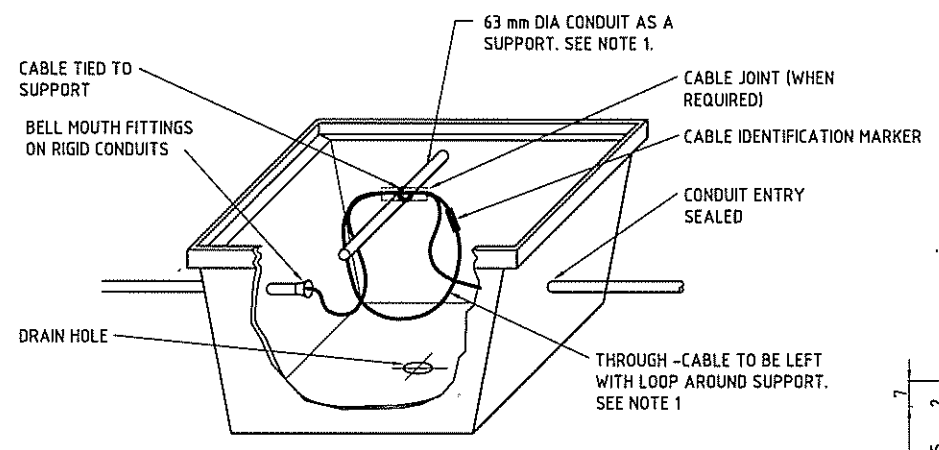
DETAIL OF CABLE JOINTING IN POLE CABLE PIT
N.T.S.



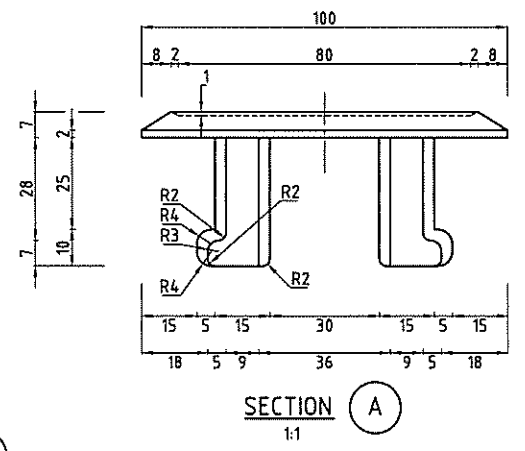
PLAN
1:1



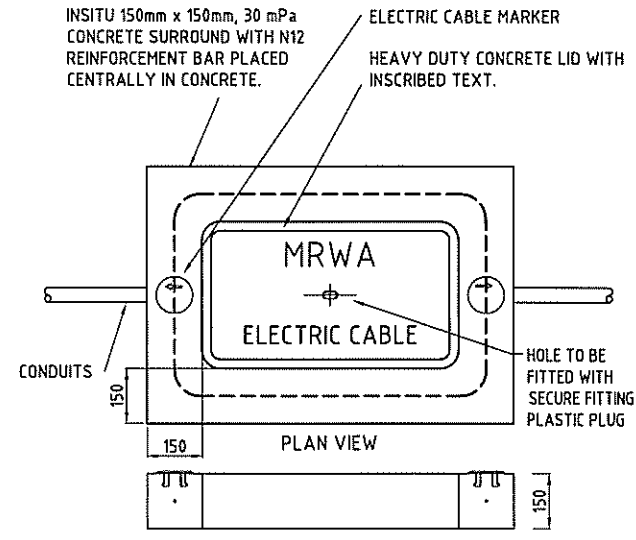
IN-GROUND POLE BASE
ELECTRICAL CONNECTIONS
SCALE N.T.S.



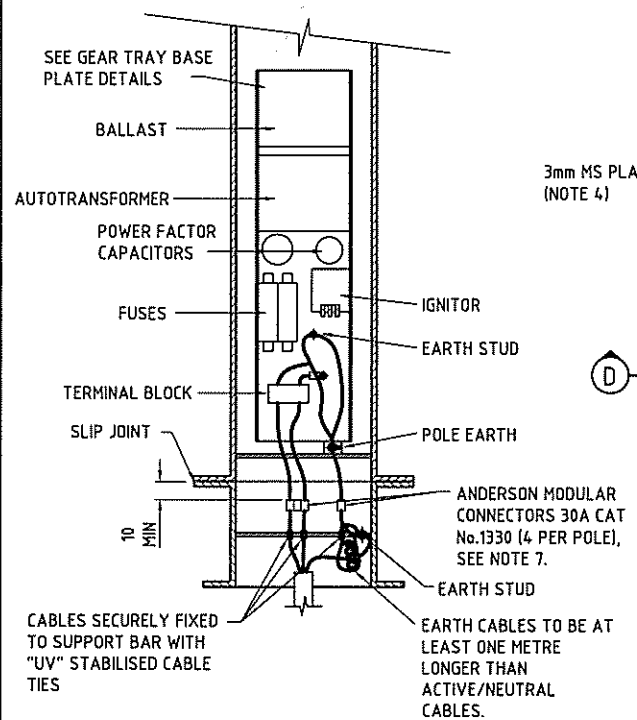
DETAIL OF CABLE THROUGH A PIT
N.T.S.



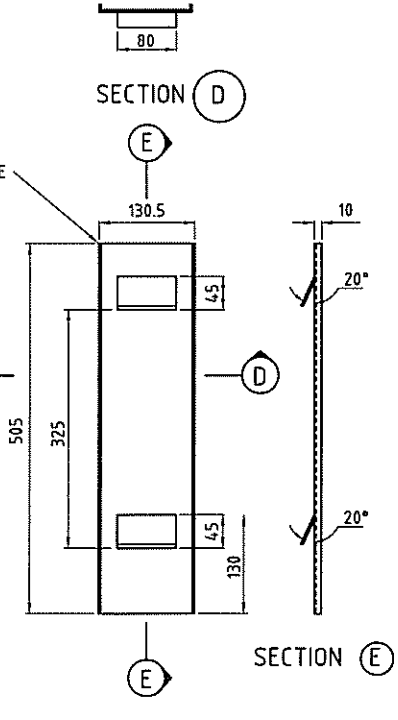
ELECTRIC CABLE MARKER



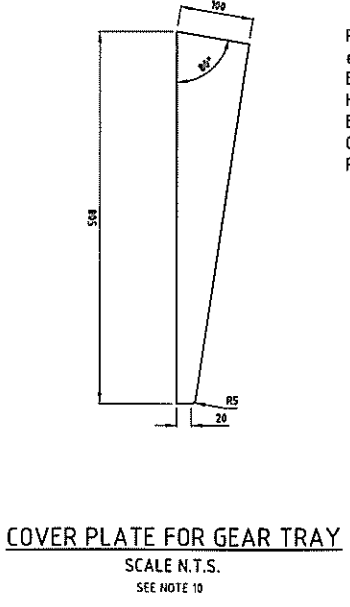
SECTIONAL VIEW OF CONCRETE SURROUND
CONCRETE PIT SURROUND
N.T.S.



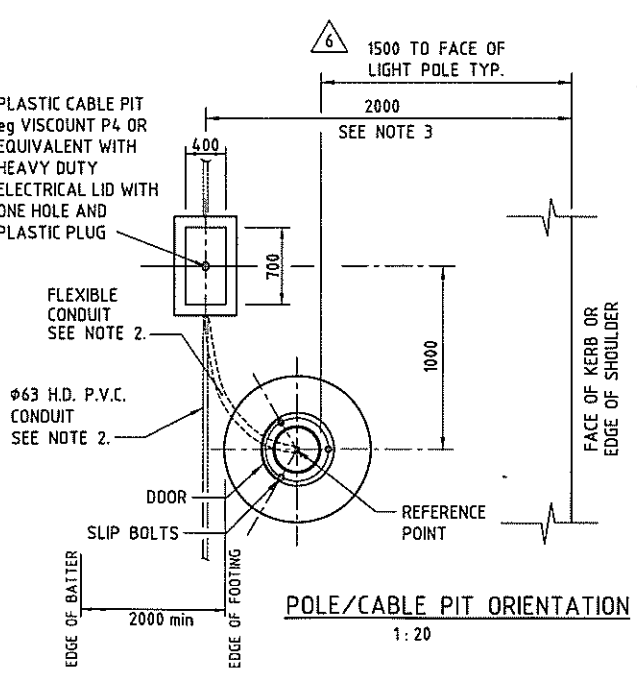
POLE BASE ELECTRICAL CONNECTIONS
N.T.S.



SINGLE OUTREACH GEAR TRAY
BASE PLATE
1:5



COVER PLATE FOR GEAR TRAY
SCALE N.T.S.
SEE NOTE 10



POLE/CABLE PIT ORIENTATION
1:20

AMENDMENTS			
No.	DATE	DESCRIPTION	APPROVED
1	21/12/05	POLE BASE EARTH CONNECTION CHANGED	B. CHAREHJOO
2	12/09/06	IN-GROUND POLE BASE ELECTRICAL CONNECTIONS AND GEAR TRAY ADDED	B. CHAREHJOO
3	11/01/11	EDMENSION TO BATTER & NOTE 11 ADDED	B. CHAREHJOO
4	15/07/12	SECTION ADDED TO CONCRETE PIT SURROUND	B. CHAREHJOO
5	17/10/14	CONTINUED EQUIPMENT CHANGED TO GEAR TRAY	S. MURPHY
6	20/08/17	LIGHT POLE SET BACK CHANGED TO 600 W/ POLE/CABLE PIT ORIENTATION	<i>[Signature]</i>

- NOTES**
- CABLES IN PIT SHALL BE SUPPORTED ON A SUITABLE LENGTH OF ϕ 63mm ELECTRICAL CONDUIT WEDGED AT TOP OF PIT. CABLES SHALL NOT TOUCH SIDES OR LID OF CABLE PIT. STRAP ALL CABLES TO SUPPORT WITH NYLON CABLE TIES.
 - CONDUITS SHALL BE A MINIMUM OF 600mm BELOW GROUND LEVEL.
 - CABLE PITS ARE TO BE LOCATED AT A DISTANCE FROM THE EDGE OF THE TRAVELLED PATH DETERMINED FROM THE LIGHTING DESIGN IN ACCORDANCE WITH AS 1158.1.3 AND THE UTILITY PROVIDERS CODE OF PRACTICE, WA. CABLE PITS MAY BE POSITIONED 1.0 m FROM THE EDGE OF THE TRAVELLED PATH WHERE SPACE DOES NOT PERMIT ITS LOCATION BEHIND THE POLE.
 - THE GEAR TRAY BASE PLATE SHALL BE ZINC PLATED AND PASSIVATED (GOLD FINISH) AFTER FABRICATION.
 - IF A PLUG PACK POWER SUPPLY IS USED IT MUST BE SECURED WITH LARGE CABLE TIES.
 - AS MANUFACTURED BY H. ROSE & Co. OR SIMILAR.
 - CONNECTORS SHALL BE LOCATED 10mm BELOW SLIP JOINT. ACTIVE AND NEUTRAL CONNECTORS SHALL BE SEPARATED BY AN ADDITIONAL CONNECTOR, AND ALL THREE SHALL BE INTERLOCKED. EARTH CONNECTOR SHALL BE SEPARATED FROM ALL OTHERS. 10mm DIMENSION FOR ANDERSON COUPLING BELOW SLIP JOINT IS CRITICAL FOR ELECTRICAL SAFETY.
 - TWO INLINE FUSES ADDED TO GEAR TRAY ONLY FOR EMERGENCY PHONE OPERATIONS. CONNECTED TO 240V AND COMMON ON AUTOTRANSFORMER.
 - FLEXIBLE CONDUIT ENTERING POLE SHOULD EXTEND NO LESS THAN 70mm ABOVE GROUND LEVEL, AND CABLE TIED TO SUPPORT BAR.
 - COVER TO BE MADE TO FIT OVER GEAR TRAY BASE PLATE. 1MM THICK ALUMINIUM PLATE, AND POP RIVETED TO BASE PLATE WITH 3.2MM RIVETS TO CENTRES STATED.
 - 2m SPACING BETWEEN THE EDGE OF THE LIGHT POLE FOOTING AND THE EDGE OF BATTER.

METADATA	
GROUND SURVEY STANDARD:	
DATE OF CAPTURE:	
MAPPING SURVEY STANDARD:	
DATE OF CAPTURE:	
MAIN ROADS PROJECT ZONE:	
HEIGHT DATUM:	

Government of Western Australia
mainroads
WESTERN AUSTRALIA
TECHNOLOGY AND ENVIRONMENT DIRECTORATE
ROAD AND TRAFFIC ENGINEERING
WATERLOO CRES EAST PERTH 6004
Telephone (08) 9323 4111 Fax (08) 9323 4449

DESIGNED / DRAWN	M. CHEW / S. CURGENVEN
VERIFIED	B. CHAREHJOO 17/10/05
APPROVED	R. GROVE 17/10/05

STANDARD DRAWING
CABLE PIT AND LIGHT POLE INTERNAL WIRING, CABLE PIT MARKER AND CONCRETE SURROUND DETAILS.

200231-0063-6