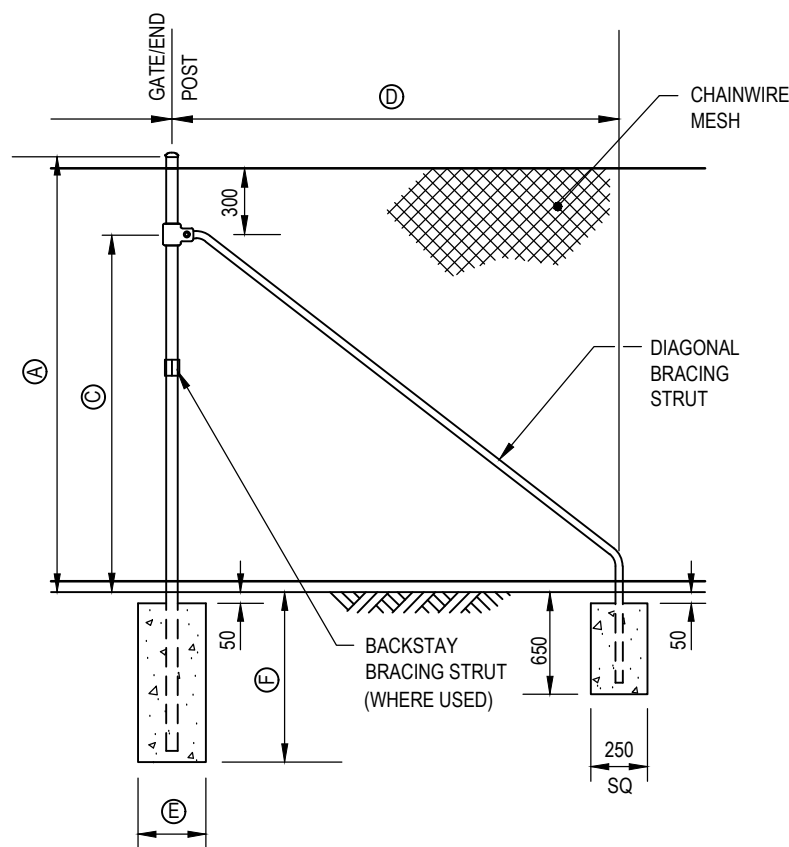
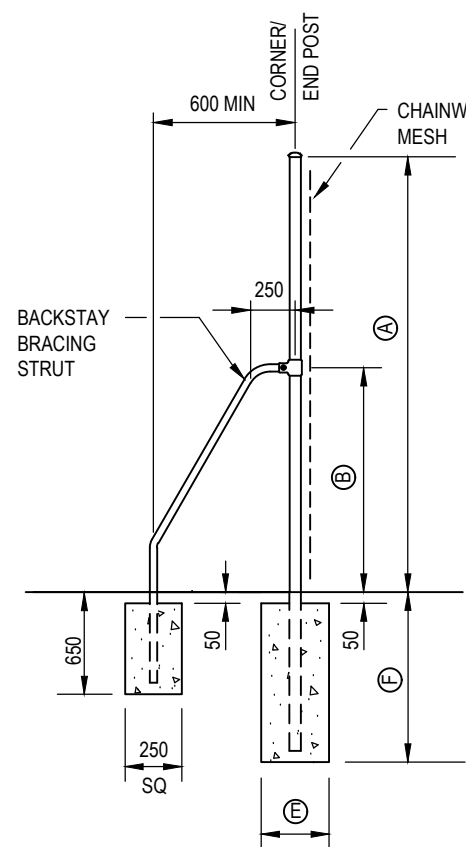


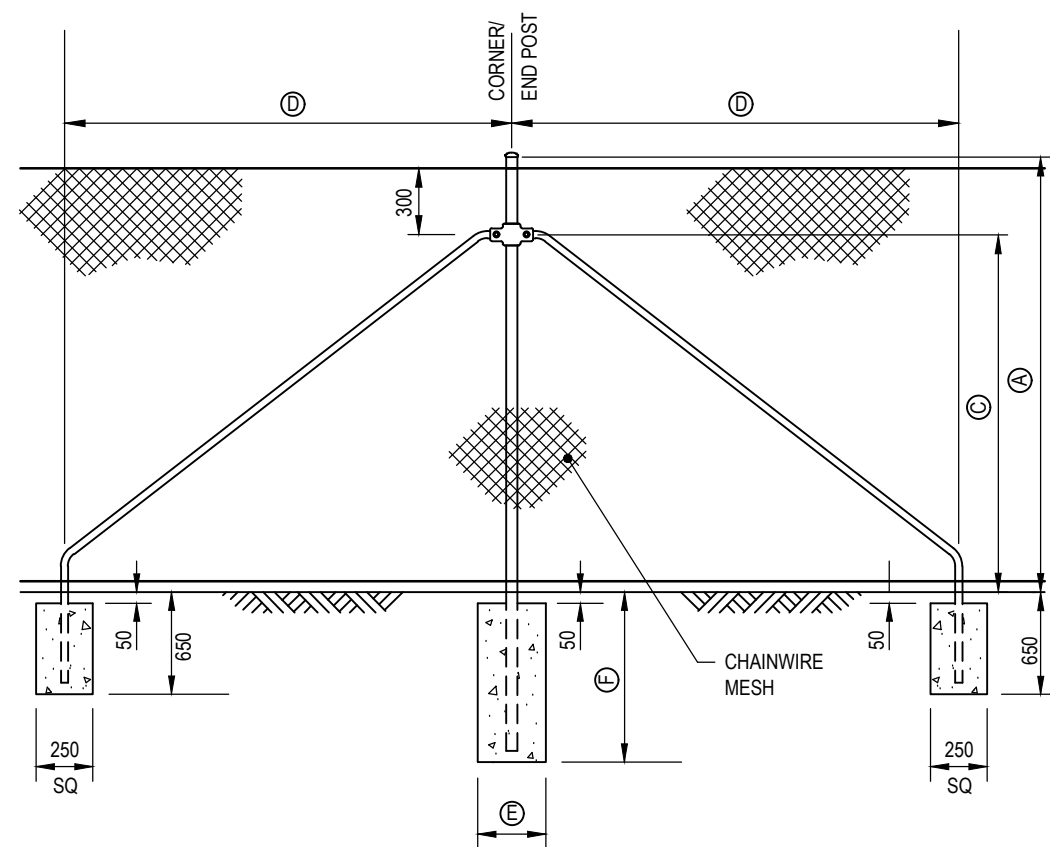
BACKSTAY DETAILS



DIAGONAL BRACE DETAILS

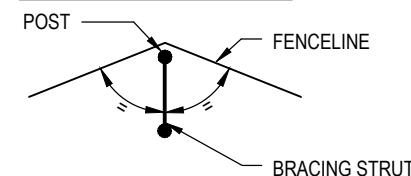


BACKSTAY - PROFILE



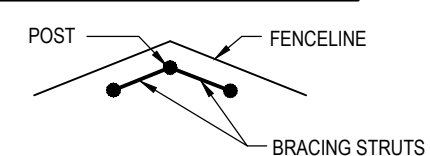
DIAGONAL BRACE - ELEVATION

GATE AND END POST
(FOR OTHER DIMENSIONS REFER TO TABLE 1)



BACKSTAY - PLAN

ALTERNATIVE TO DIAGONAL BRACE FOR CHANGES IN FENCE DIRECTION UP TO 30°



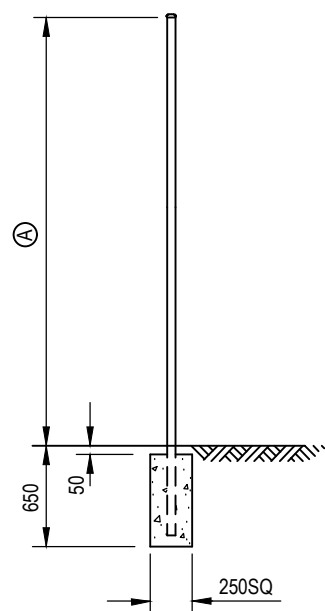
DIAGONAL BRACE - PLAN

ALSO USED ON LONG STRAIGHTS - REFER TO NOTES

CORNER STRAINER ASSEMBLY

USE WHERE THERE IS A CHANGE IN DIRECTION OF FENCELINE.
(FOR OTHER DIMENSIONS REFER TO TABLE 1)

REFERENCE DRAWINGS	
GATE AND STRAINER ASSEMBLY DETAILS (1200mm CHAINWIRE FENCE)	200331-0106
GATE AND STRAINER ASSEMBLY DETAILS (1800mm CHAINWIRE FENCE)	200331-0107
GATE AND STRAINER ASSEMBLY DETAILS (2400mm CHAINWIRE FENCE)	200331-0108



INTERMEDIATE POST

USE ON STRAIGHTS
(FOR OTHER DIMENSIONS REFER TO TABLE 1)

STEEL PIPE AND FOOTING PROPERTIES FOR GATE AND END POSTS								
DESCRIPTION	1200	1400	1800 CHAINWIRE		2400	FOOTING SIZE 'E'x'F'	GATE FRAME	GATE SUPPORT
	CHAINWIRE	CHAINWIRE	NON-BARBED	BARBED	CHAINWIRE			
DIMENSION 'A'	1200	1400	1930	2450	2550	-	-	-
DIMENSION 'B'	900	1100	1250 MIN	1250 MIN	1250 MIN	-	-	-
DIMENSION 'C'	900	1100	1500	1500	2100	-	-	-
DIMENSION 'D'	1200 MIN	1400 MIN	1800 MIN	1800 MIN	2400 MIN	-	-	-
END AND CORNER POSTS	DN50/2.9(L)/1950	DN50/2.9(L)/2200	DN50/2.9(L)/2680	DN50/2.9(L)/3200	DN50/2.9(L)/3300	250SQx800	-	-
INTERMEDIATE POSTS	DN32/2.6(L)/1800	DN32/2.6(L)/2000	DN32/2.6(L)/2530	DN32/2.6(L)/3050	DN32/2.6(L)/3150	AS SHOWN	-	-
SINGLE GATE POSTS	DN50/2.9(L)/1950	DN50/2.9(L)/2200	DN50/2.9(L)/2680	DN50/2.9(L)/3200	DN50/2.9(L)/3300	300SQx800	DN25	N/A
DOUBLE GATE POSTS - UP TO 6000	DN50/3.6(M)/2200	DN50/3.6(M)/2400	DN50/3.6(M)/2930	DN50/3.6(M)/3450	DN50/3.6(M)/3550	300SQx1050	DN25	DN20
DOUBLE GATE POSTS - 6000-8000	N/A	DN80/4.0(M)/2500	DN80/4.0(M)/3030	DN80/4.0(M)/3550	DN80/4.0(M)/3650	400SQx1150	DN32	DN25
DOUBLE GATE POSTS - 8000-10000	N/A	DN100/4.5(M)/2600	DN100/4.5(M)/3130	DN100/4.5(M)/3650	DN100/4.5(M)/3750	450SQx1250	DN40	DN32
DIAGONAL AND BACKSTAY BRACE STRUTS	DN32/2.6(L)/LENGTH AS REQUIRED					AS SHOWN	-	-

KEY: 'DN50/2.9(L)/1950' REFERS TO STEEL TUBE 50/2.9mm WALL THICKNESS (LIGHT)/1950 LONG.

TABLE 1

NOTES

- FENCING TO BE SUPPLIED AND INSTALLED IN ACCORDANCE WITH AUSTRALIAN STANDARD AS 1725 AND MAIN ROADS SPECIFICATION 903 FENCING.
- DIMENSIONS SHOWN ON THIS DRAWING ARE TYPICAL.
- WIRE DIAMETER AND PIPE WALL THICKNESSES ARE WITHOUT GALVANISING.
- POSTS TO BE VERTICAL WITH TOLERANCE 1 : 50 AND WITH PRESSED INDENTED CAPS.
- CHAINWIRE MESH TO HAVE TOP & BOTTOM SELVEDGES KNUCKLED.
- CHAINWIRE MESH IS TO BE LOCATED ON THE SIDE OF POST AS INDICATED IN THE SPECIFICATION AND DRAWINGS.
- STRAINER WIRE TO BE TENSIONED BETWEEN ANCHORAGE POINTS.
- DIAGONAL BRACING TO BE USED AT MAXIMUM SPACING OF 150m ON ALL LONG STRAIGHTS.
- ALL WIRES TO BE JOINED BY FIGURE OF 8 KNOT OR WIRE JOINERS AS PER INDUSTRY STANDARD.
- ALL UNITS IN MILLIMETRES UNLESS OTHERWISE NOTED.

3 TITLE BLOCK & FILE No. UPDATED
2 TABLE 1 - DIMENSION '1400' ADDED
1 TABLE 1 - DIMENSION 'D' FOR 1200

A.Wong 26/10/23
T. FREEMAN 01.08.2014
R. GROVE 10.03.2006

No.	DESCRIPTION	APPROVED & DATE
	AMENDMENTS	

PLANNING AND TECHNICAL SERVICES DIRECTORATE
ROAD AND TRAFFIC ENGINEERING BRANCH
Waterloo Crescent
Telephone 138 138

DRAWN	M. VASEV	14.06.05
DESIGNED	J. KARPINSKI	15.06.05
VERIFIED	W. CANNELL	15.06.05
APPROVED		
FILE NO.	13/4330	

STANDARD DRAWING
FENCING
CHAINWIRE FENCE
STRAINER AND POST DETAILS

MRWA DRAWING NUMBER
200331-0109-3

AMENDMENT
3

NOT TO SCALE