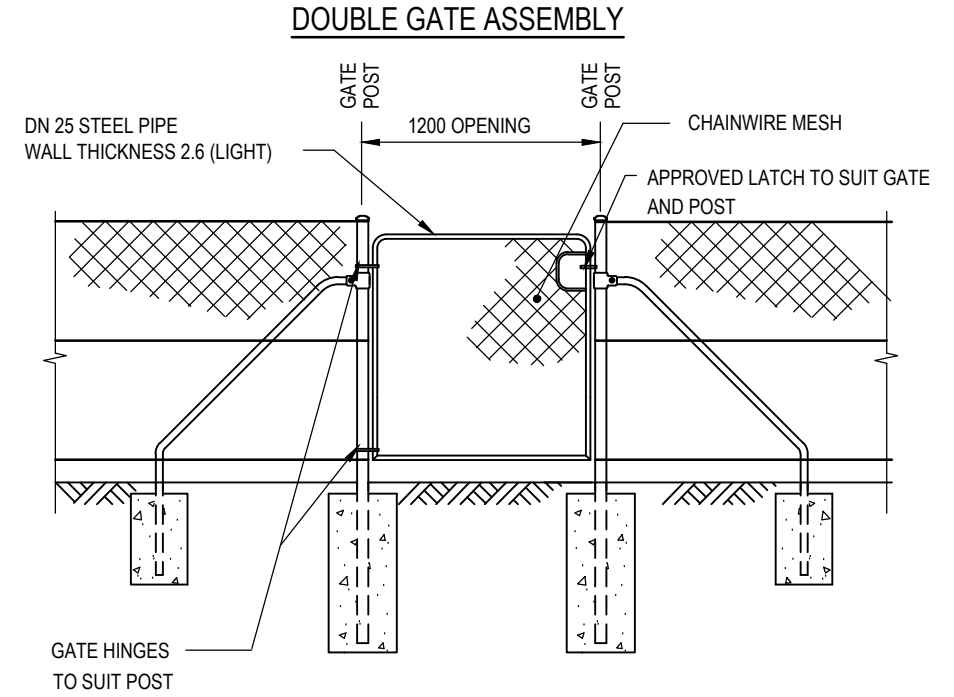
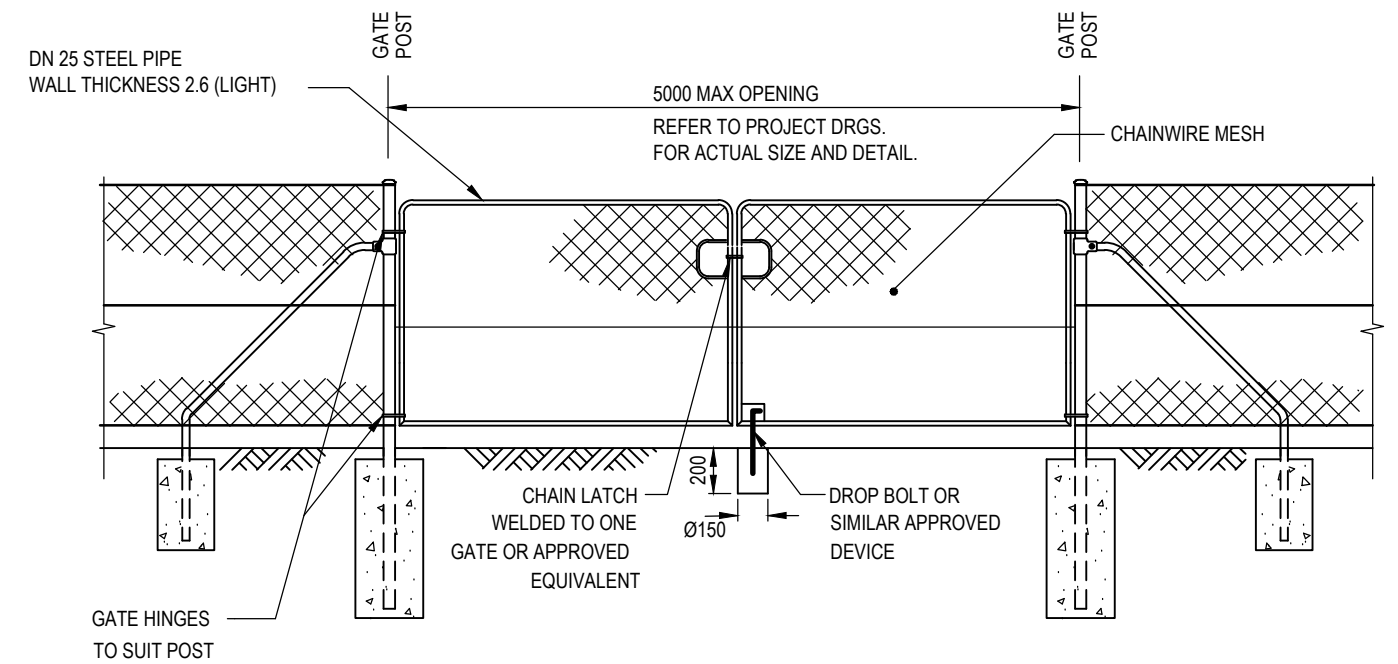


DRAWING REFERENCES	
STRAINER AND POST DETAILS	200331-0109



**NOTES**

- FENCING TO BE SUPPLIED AND INSTALLED IN ACCORDANCE WITH AUSTRALIAN STANDARD AS 1725 AND MAIN ROADS SPECIFICATION 903 FENCING.
- DIMENSIONS SHOWN ON THIS DRAWING ARE TYPICAL.
- WIRE DIAMETER AND PIPE WALL THICKNESSES ARE WITHOUT GALVANISING.
- ALL WIRES TO BE JOINED BY FIGURE OF 8 KNOT OR WIRE JOINERS AS PER INDUSTRY STANDARD.
- FOR DIMENSIONS AND OTHER DETAILS FOR GATES, STRAINERS AND POSTS REFER TO THE REFERENCE DRAWINGS.
- TOP RAIL ARRANGEMENT SHALL NOT BE USED WHERE FENCE ALIGNMENT FALLS WITHIN THE CLEAR ZONE.
- ALL UNITS ARE IN MILLIMETRES UNLESS OTHERWISE NOTED.

	COATING OPTION	
	PVC COATED	GALVANISED
CHAINWIRE MESH	1250x50xØ3.15 PVC COATED $\Delta$ 3	1250x50xØ3.15 GALVANISED $\Delta$ 3
STRAINER WIRE	SINGLE Ø4.0 HELICOIL PVC COATED	SINGLE Ø4.0 HELICOIL GALVANISED
Ø2.0 MESH TIE WIRE	PVC COATED	GALVANISED
STEEL PIPE PRESSED CAP CLIP TEE	POWDER COATED	GALVANISED

No.	DESCRIPTION	APPROVED & DATE
3	CHAINWIRE MESH SIZE CORRECTED.	A.Wong 29/11/23
2	TITLE BLOCK & FILE No. UPDATED.	A. WONG 26/10/23
1	STRAINER WIRES (CENTRAL) ADDED.	T. FREEMAN 03.08.2015

AMENDMENTS

PLANNING AND TECHNICAL SERVICES DIRECTORATE  
ROAD AND TRAFFIC ENGINEERING BRANCH  
Waterloo Crescent EAST PERTH 6004  
Telephone 138 138

DRAWN	RTE BRANCH
DESIGNED	F. HO 13.08.14
VERIFIED	T. FREEMAN 14.08.14
APPROVED	R. GROVE 14.08.14
FILE NO.	13/4330

STANDARD DRAWING  
FENCING  
1400 CHAINWIRE FENCE  
GATE AND STRAINER ASSEMBLY DETAILS

MRWA DRAWING NUMBER 201431-0037-3

AMENDMENT