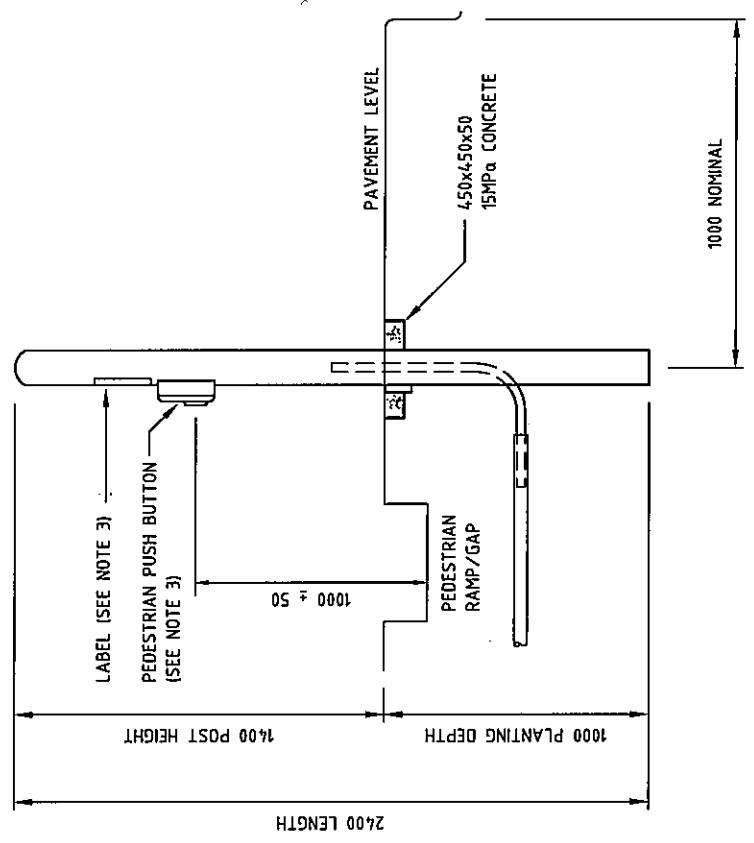
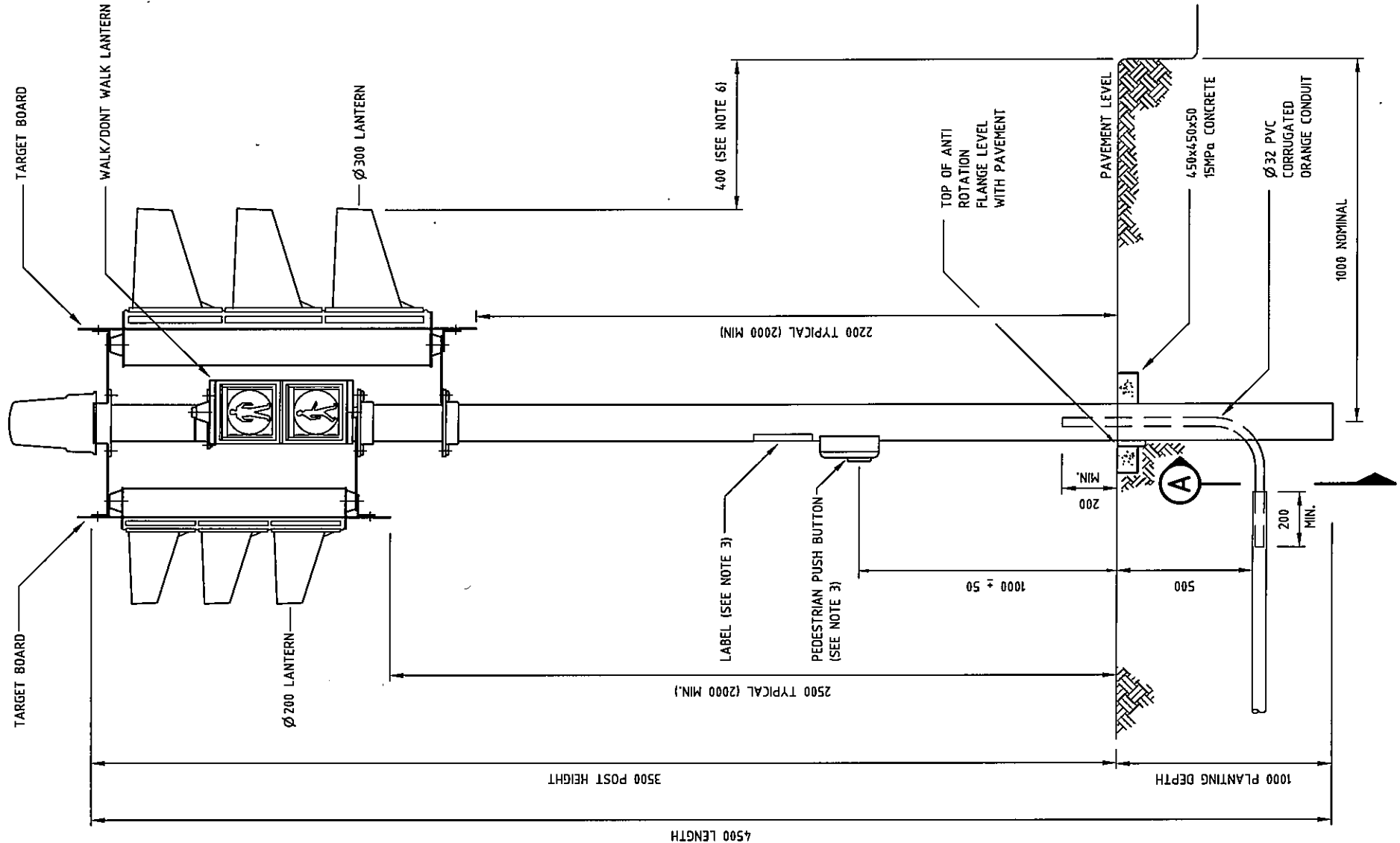


LOCATION OF AUDIO TACTILE DRIVER UNIT
N.T.S.

(WALK/DONT WALK LANTERN SHOWN OFFSET FOR CLARITY)



STUB POST
N.T.S.



TRAFFIC SIGNAL POST
N.T.S.

AMENDMENTS	DESCRIPTION	APPROVED & DATE

NOTES

- THIS DRAWING SHALL BE READ IN CONJUNCTION WITH MAIN ROADS SPECIFICATION 712 AND DESIGN GUIDELINES.
- WHERE PUSH BUTTON ASSEMBLIES ARE MOUNTED ON STUB POSTS THE AUDIO TACTILE DRIVER UNIT IS TO BE MOUNTED ON THE NEAREST SIGNAL POST WHICH CARRIES THE ASSOCIATED "WALK" SIGNAL ACTIVE.
- PEDESTRIAN PUSH BUTTON LABEL MOUNTED 50mm ABOVE PUSH BUTTON.
LABEL SELECTED AS FOLLOWS:
EXCLUSIVE PEDESTRIAN MOVEMENT:- J-PED-1
PARALLEL VEHICLE/PEDESTRIAN MOVEMENT:- J-PED-2
- SEE DRAWING No. 200431-0148 FOR LANTERN MOUNTING DETAILS.
- ALL DIMENSIONS IN MILLIMETRES.
- DESIRABLE IS 400mm WITH ABSOLUTE MINIMUM OF 300mm DUE TO ROADSIDE ITEMS AND SITE CONSTRAINTS.

SCALE N.T.S.

Government of Western Australia
TECHNOLOGY AND ENVIRONMENT
ROAD AND TRAFFIC ENGINEERING
Waterloo Crescent
East Perth 6004
Telephone (08) 9323 4111 Fax (08) 9323 4444

MAIN ROADS
Western Australia

FILE NUMBER 67-08-4F
DESIGNED / DRAWN F. WINKLER K. GREENDA A. DAYE
VERIFIED B. CHAREHJOO
APPROVED *B. Charehjoo* 3/18/09

STANDARD DRAWING
TRAFFIC CONTROL SIGNALS

SIGNAL POST AND STUB POST
INSTALLATION DETAILS

LOCAL AUTHORITY
DRAWING NUMBER
200431-0147