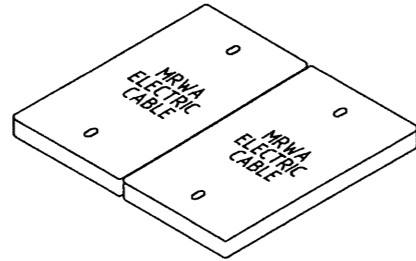
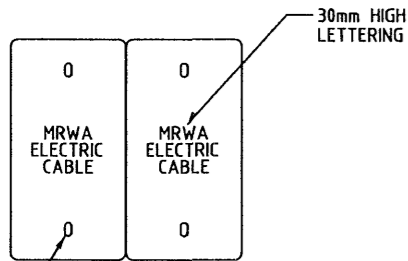
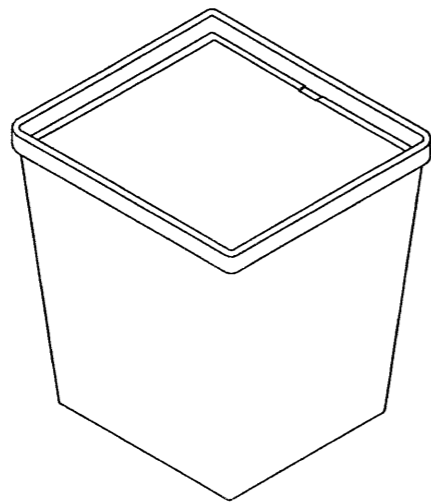
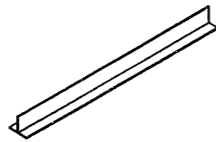


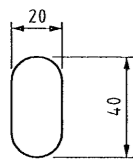
LIDS



SUPPORT BAR

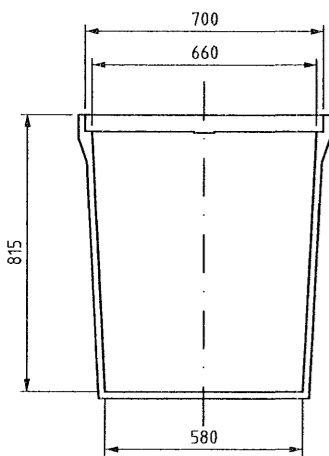


PIT



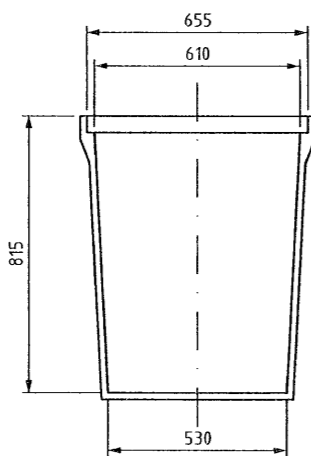
LIFTING EYE DETAIL

TYPICAL ASSEMBLY

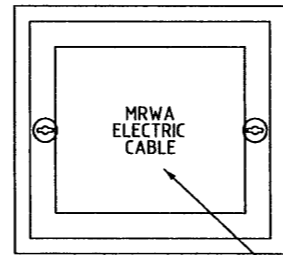


ELEVATION

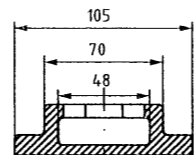
DOUBLE LID CABLE PIT



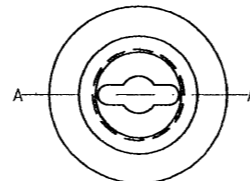
SIDE ELEVATION



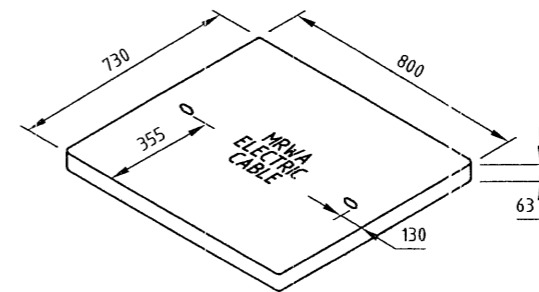
TRAFFICABLE LID



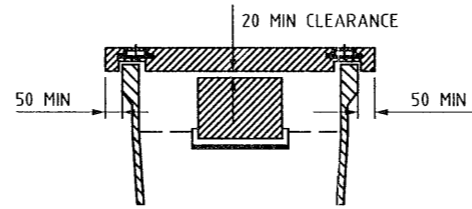
SECTIONAL VIEW A-A



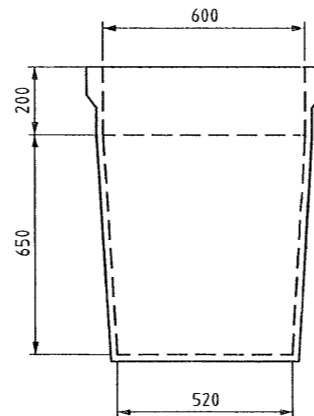
KEYHOLE



TYPICAL ASSEMBLY

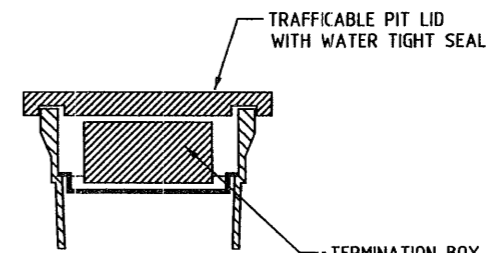


SECTIONAL VIEW

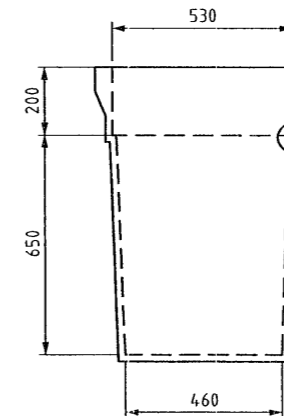


ELEVATION

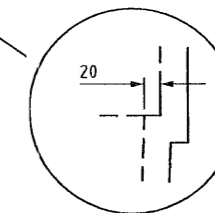
TERMINATION PIT



SECTIONAL VIEW



SIDE ELEVATION



LIP DETAIL

AMENDMENTS		
No.	DESCRIPTION	APPROVED & DATE
1	LID DIMENSIONS ADDED, NOTE 1 AMENDED.	<i>[Signature]</i> 02/11/07

NOTES

- THIS DRAWING SHALL BE READ IN CONJUNCTION WITH MAIN ROADS SPECIFICATION 712 AND 901.
- ALL SIZES IN mm.

MAIN ROADS
 Western Australia
 TECHNOLOGY AND ENVIRONMENT
ROAD AND TRAFFIC ENGINEERING
 Waterloo Crescent East Perth 6004
 Telephone (08) 9323 4111 Fax (08) 9323 4449

FILE NUMBER	67-08-4F	
DESIGNED / DRAWN	F. WINKLER / K. GREEDA	
VERIFIED	B. CHAREHJOO	6.11.06
APPROVED	R. GROVE	2.2.07

STANDARD DRAWING
 TRAFFIC CONTROL SIGNALS
DOUBLE LID CABLE PIT & TERMINATION PIT
 TYPICAL DETAILS

LOCAL AUTHORITY	DRAWING NUMBER	AMEND
	200431-0128-1	

SCALE N.T.S.

INDICATED DATE

A 3