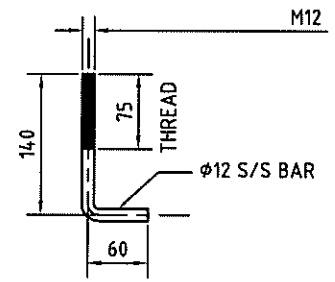
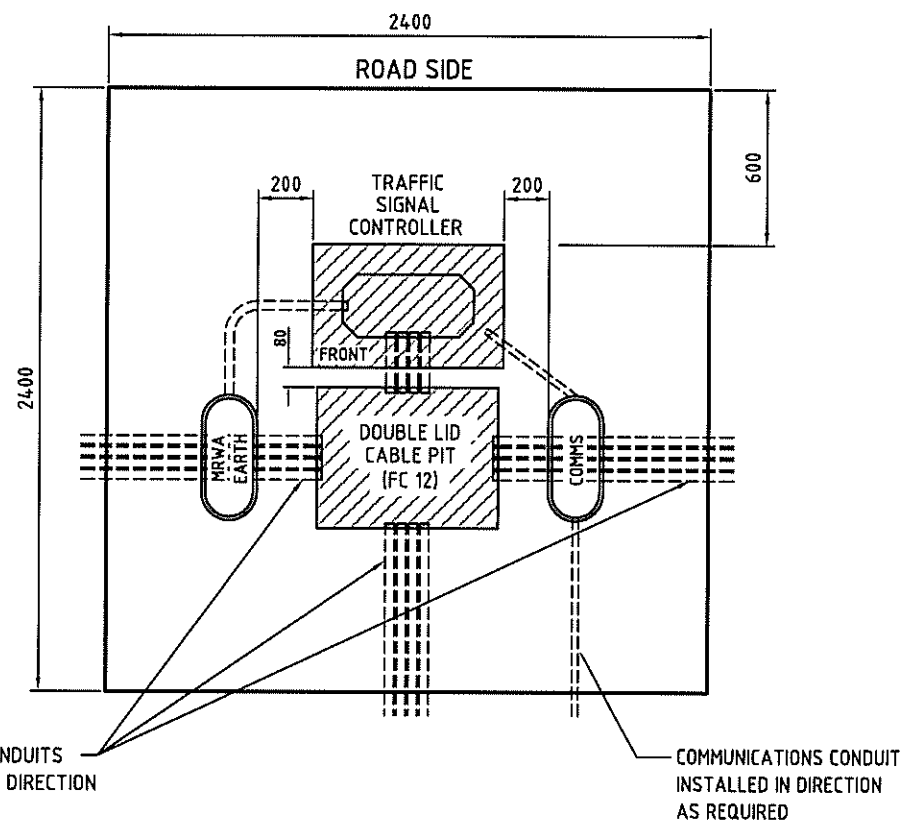


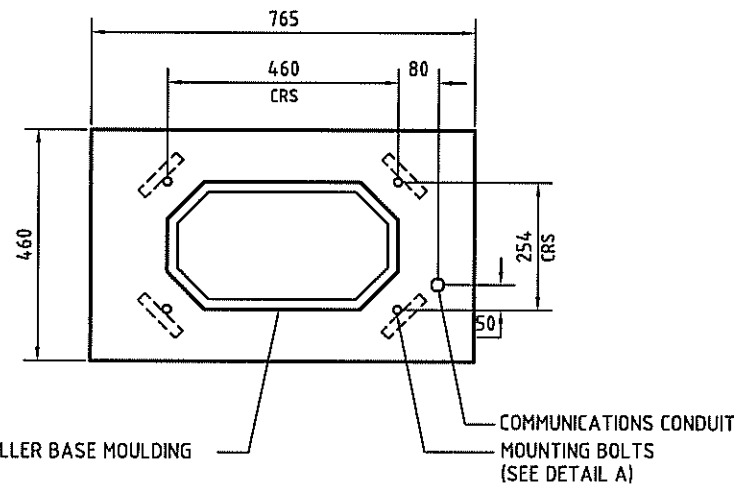
DETAIL A
N.T.S.



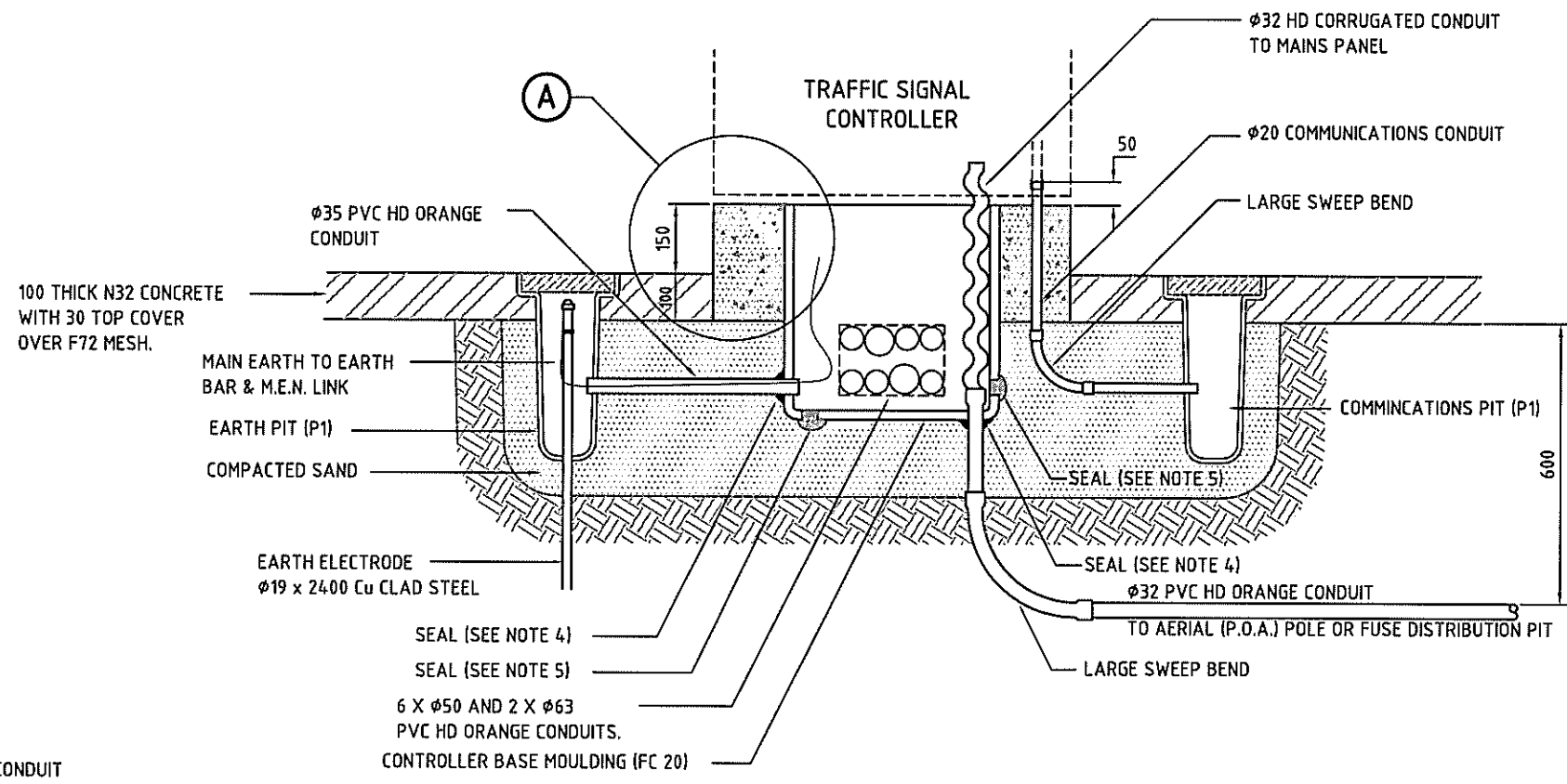
TYPICAL BOLT ALTERNATIVE
N.T.S.



TYPICAL APRON
N.T.S.



TRAFFIC SIGNAL CONTROLLER BASE
1:15



TRAFFIC SIGNAL CONTROLLER FOOTING
1:15

AMENDMENTS	
No.	DESCRIPTION

- NOTES**
- THIS DRAWING SHALL BE READ IN CONJUNCTION WITH MAIN ROADS SPECIFICATION 712 AND MAIN ROADS DESIGN GUIDELINES.
 - HOLES FOR CONDUITS SHALL BE NEATLY CUT USING A HOLE CUTTER OR A SIMILAR TOOL.
 - CONDUITS SHALL NOT EXTEND FURTHER THAN 50mm INTO ANY PIT.
 - BEFORE BACKFILLING ALL CONDUITS SHALL BE SEALED AGAINST THE MOULDING USING A 3:1 SAND / CEMENT MORTAR. REMOVE ANY EXCESS FROM INSIDE THE MOULDING.
 - ALL UNUSED HOLES SHALL BE CONCRETED SHUT WITH A SMOOTH FLUSH SURFACE ON THE INSIDE OF THE CONTROLLER BASE MOULDING.
 - AT UNPAVED/UNSEALED SITES AN APRON SHALL BE PROVIDED CONSISTING OF A 2400 X 2400 X 100 REINFORCED CONCRETE PAD. THE APRON SHALL BE LEVEL WITH THE PITS AND SHALL BUTT ONTO ANY NEARBY PAVED AREA WITHOUT GAPS OR STEPS.

METADATA	
GROUND SURVEY STANDARD:	
DATE OF CAPTURE:	
MAPPING SURVEY STANDARD:	
DATE OF CAPTURE:	
MAIN ROADS PROJECT ZONE:	
HEIGHT DATUM:	

mainroads
WESTERN AUSTRALIA
PLANNING AND TECHNICAL SERVICES DIRECTORATE
ROAD AND TRAFFIC ENGINEERING BRANCH
Waterloo Crescent East Perth 6004
Telephone (08) 9323 4111 Fax (08) 9323 4430

mainroads
WESTERN AUSTRALIA
PLANNING AND TECHNICAL SERVICES DIRECTORATE
ROAD AND TRAFFIC ENGINEERING BRANCH
Waterloo Crescent East Perth 6004
Telephone (08) 9323 4111 Fax (08) 9323 4430

FILE NUMBER	67-08-4F
DESIGNED / DRAWN	F. WINKLER / K. GREEDA
VERIFIED	B. CHAREHJOO
APPROVED	<i>[Signature]</i> 20/5/13

STANDARD DRAWING
TRAFFIC CONTROL SIGNALS
CONTROLLER FOOTING & MOUNTING DETAILS
LOCAL AUTHORITY
MRWA DRAWING NUMBER AMENDMENT

200431-0123