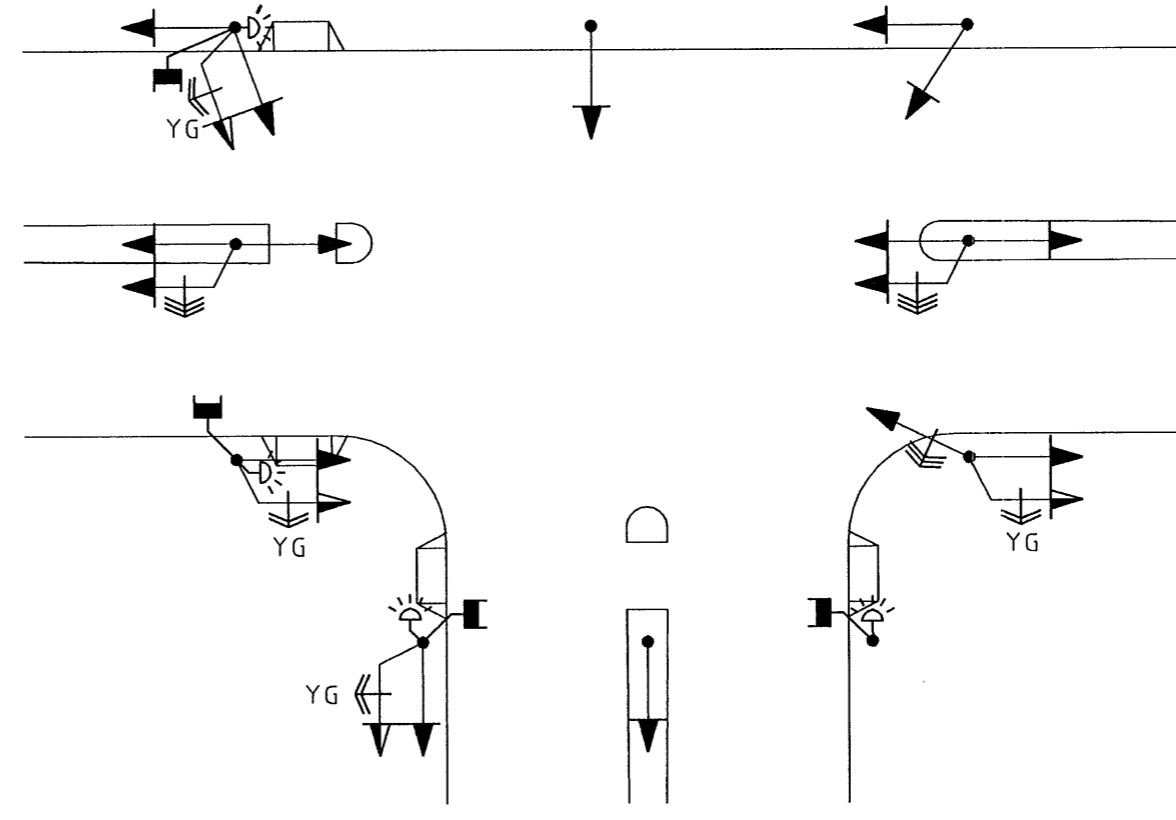
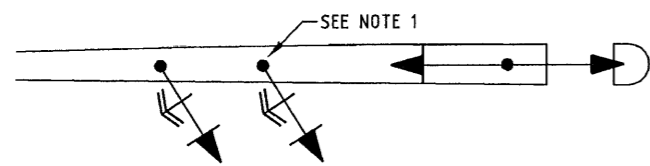


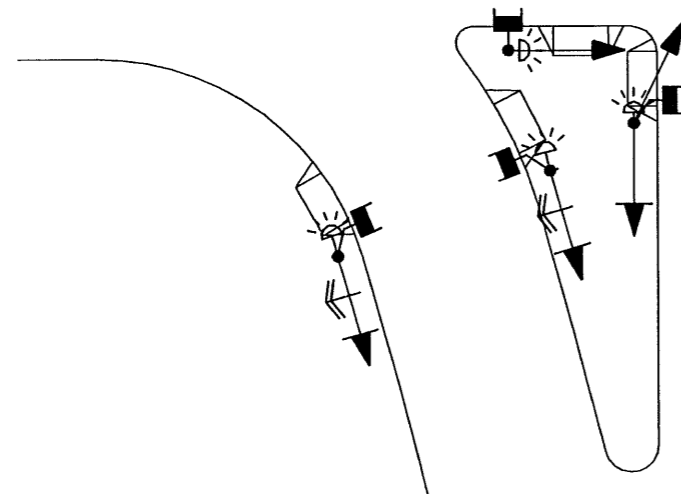
FULL ISOLATION OF PEDESTRIAN CROSSINGS  
(WEST & SOUTH LEGS ONLY)



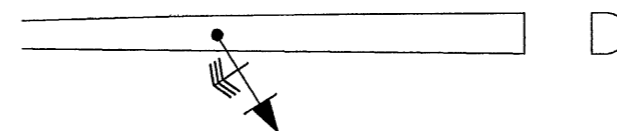
PARTIAL ISOLATION OF PEDESTRIAN CROSSINGS  
(WEST & SOUTH LEGS ONLY)



CHANNELISED LEFT TURN  
MEDIUM - LARGE ISLAND



CHANNELISED LEFT TURN  
SMALL ISLAND  
(WITHOUT PEDESTRIAN CROSSING TO THE RIGHT)



AMENDMENTS	
No.	DESCRIPTION

NOTES

- 1) PREFERRED OPTION FOR SINGLE LANE LEFT TURN.
- 2) SEE TRAFFIC MANAGEMENT GUIDELINES FOR TRAFFIC SIGNALS FOR PPB ORIENTATIONS FOR DIFFERENT CROSSING TYPES.

**Government of Western Australia**  
**MAIN ROADS**  
 Western Australia  
 TECHNOLOGY AND ENVIRONMENT  
 ROAD AND TRAFFIC ENGINEERING  
 Waterloo Crescent East Perth 6004  
 Telephone (08) 9323 4111 Fax (08) 9323 4449

FILE NUMBER	67-08-4F
DESIGNED / DRAWN	F. WINKLER / K. GREENDA
VERIFIED	B. CHAREHJOO 04/12/2009 <i>Bita Charehjo</i>
APPROVED	<i>R. Snow</i> 21/10/07

GUIDELINE DRAWING  
 TRAFFIC CONTROL SIGNALS  
 TYPICAL SIGNAL DISPLAY LOCATIONS  
 3-WAY T-JUNCTIONS AND CHANNELISED LEFT TURNS  
 LOCAL AUTHORITY

DRAWING TYPE	DRAWING NUMBER	AMEND
	200431-0119	

SCALE N.T.S.

PROGRAM DATE  
A  
3