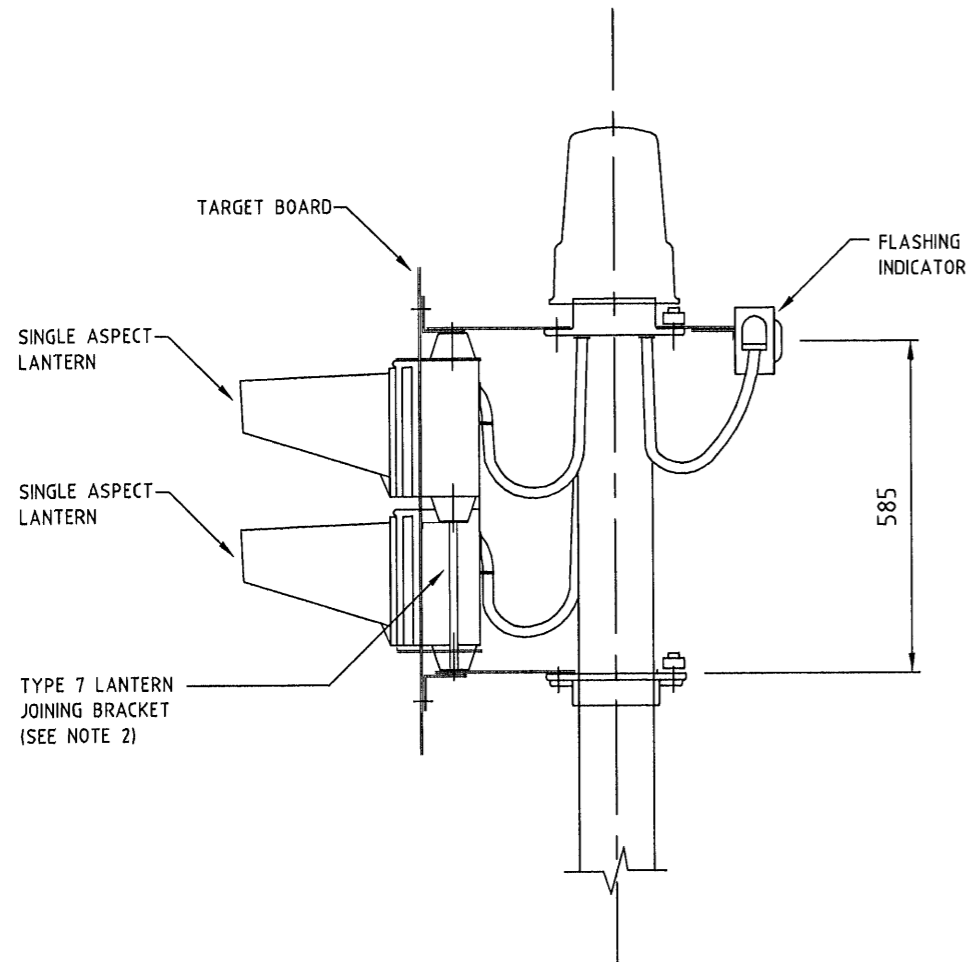


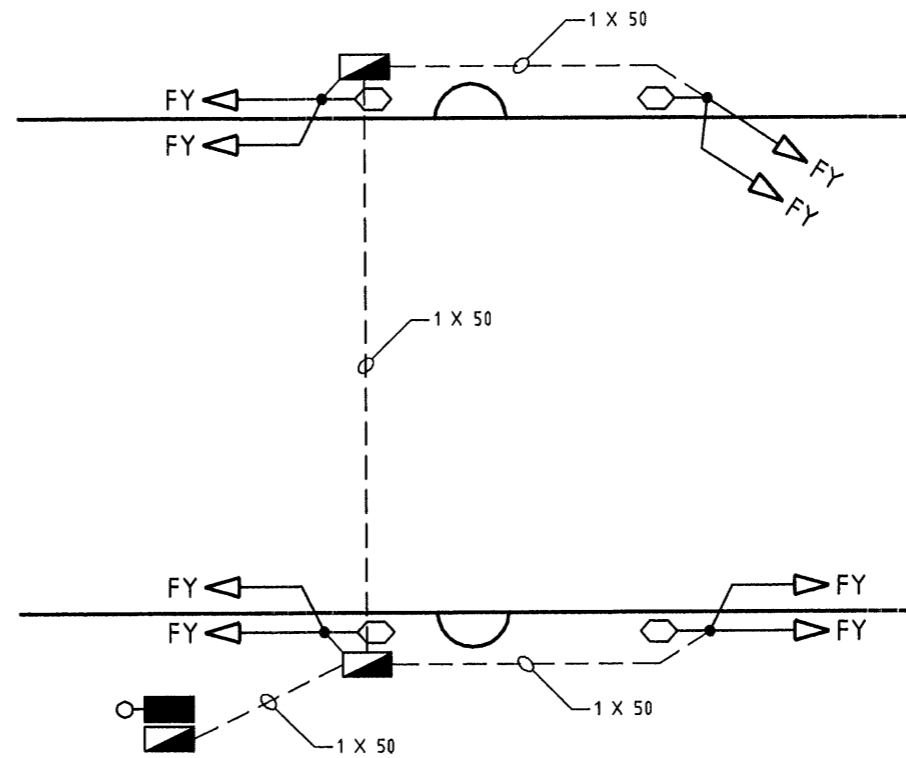
TYPICAL ORIENTATION  
N.T.S.



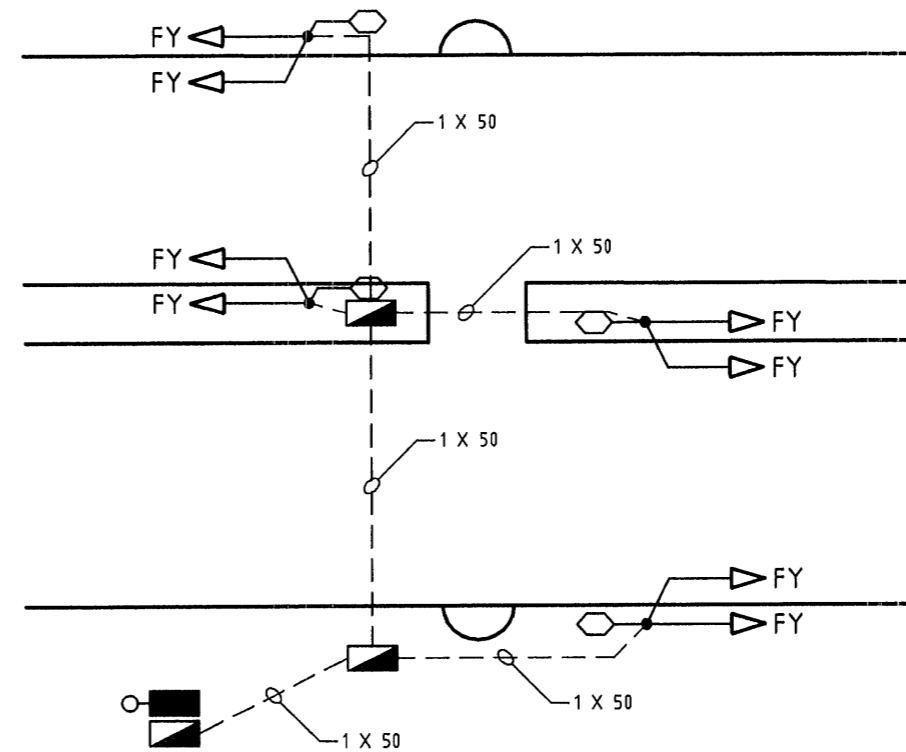
TYPICAL LANTERN ASSEMBLY FOR FLASHING SIGNALS  
N.T.S.

LEGEND

- PVC HD ORANGE CONDUIT
- LOOP PIT (J1)
- TWIN Ø200mm FLASHING YELLOW LANTERN
- CONTROLLER
- INDICATOR



WITHOUT PEDESTRIAN REFUGE ISLAND



WITH PEDESTRIAN REFUGE ISLAND

AMENDMENTS		
No.	DESCRIPTION	APPROVED & DATE

NOTES

- THIS DRAWING SHALL BE READ IN CONJUNCTION WITH MAIN ROADS SPECIFICATION 712.
- SINGLE ASPECT LANTERNS TO BE REINFORCED BY TYPE 7 BRACKET ACCORDING TO DRG. No. 200431-0612.

REFERENCE DRAWINGS	
DESCRIPTION	DRAWING NUMBER
SIGNAL LAYOUT.	200431-0108
ELECTRICAL CONTROL BOX DETAILS.	200431-0111

**MAIN ROADS**  
 Western Australia  
 TECHNOLOGY AND ENVIRONMENT  
**ROAD AND TRAFFIC ENGINEERING**  
 Waterloo Crescent East Perth 6004  
 Telephone (08) 9323 4111 Fax (08) 9323 4449

FILE NUMBER	67-08-4F
DESIGNED / DRAWN	F. WINKLER / K. GREEDA
VERIFIED	B. CHAREHJOO <i>6/11/2006</i>
APPROVED	<i>[Signature]</i> 2/2/07

GUIDELINE DRAWING  
 ADVANCE WARNING FLASHING SIGNALS  
 TYPICAL CONDUIT LAYOUT AND  
 LANTERN MOUNTING DETAILS  
 SCHOOL CROSSINGS

LOCAL AUTHORITY	DRAWING NUMBER	AMEND
	200431-0113	

SCALE N.T.S. MICROFORM DATE A 3