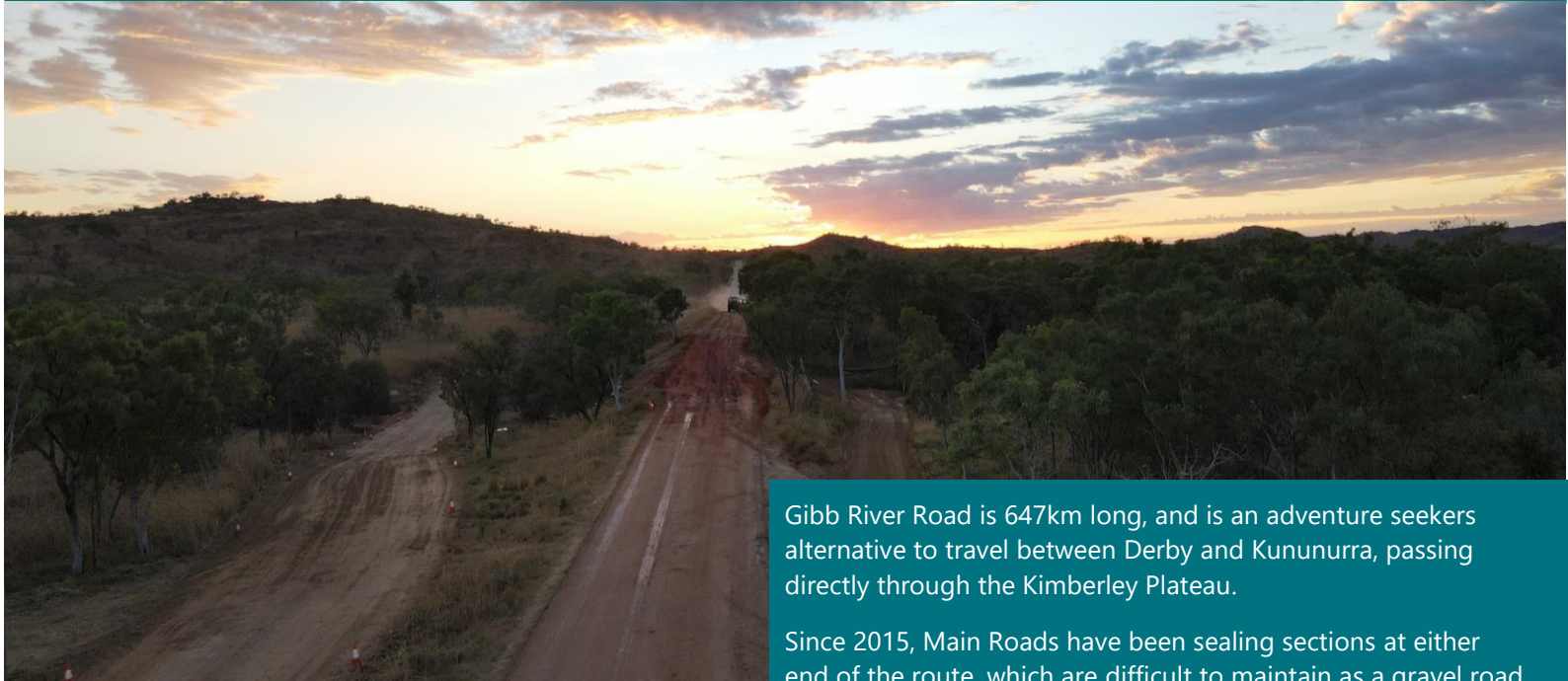




Gibb River Road



Gibb River Road is 647km long, and is an adventure seekers alternative to travel between Derby and Kununurra, passing directly through the Kimberley Plateau.

Since 2015, Main Roads have been sealing sections at either end of the route, which are difficult to maintain as a gravel road due to the high traffic numbers.

Our Gibb River Road upgrade strategy aims to provide a sealed road on the more heavily trafficked eastern and western sections, whilst developing the central section as a high standard unsealed road with some small lengths of seal at critical locations. Sealing of the road to the Lennard River in the west and Pentecost River in the east has been substantially completed, with the outstanding sections planned to be sealed by 2022.

2020/21 Wet-season repairs

Main Roads has been undertaking repair works on sections of road damaged during the last wet season.

The replacement of two large culverts at Mac Creek is complete. Repairs to floodways and other pavement damage will be progressively completed before the onset of the next wet season.

Maintenance Grading

The opening up grade was completed in late April 2021 and now the first full maintenance grade from Kununurra end is complete. Our maintenance crew are now starting the second maintenance grade from the Derby end and will continue until mid August.

If you encounter our grader along your journey, please use safe overtaking manoeuvres, and drive to the conditions.

Gravel Resheeting - Imitji to Mt Barnett

Work is in progress gravel resheeting a 24 km section of road between Imitji and Mt Barnett. The work will include the stabilisation and sealing of floodways, as well as the sealing of an overtaking opportunity, with works anticipated to be complete by end of July 2021.

Road Sealing - Derby to Lennard River

It is planned to construct and seal the final 10km section of gravel road between Derby and the Windjana Gorge/Tunnel Creel turn-off in 2021.

It is planned to commence construction works in July and be completed by late 2021 in time for the wet season.

River Crossings

Due to the long wet season, the water levels at several major rivers are still above 300mm, so the road is open only to high clearance four-wheel drives and trucks.

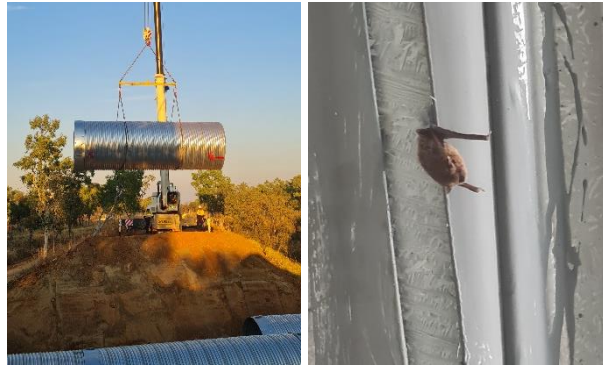
There are also a number of damaged creek crossings that are still to be repaired as they are still flowing, so reduce speed and take care when approaching all floodways.

Mac the Bat

Whilst carrying out the culvert replacement at Mac Creek, our crew spotted a fairy bat living in one of the pipes.

Carefully removing the pipe, the crew ensured the aptly named 'Mac the Bat' was safe and continued with the replacement works.

Once complete, the crew were delighted to see that Mac had moved himself into the new pipes, and made himself at home!



Driving tips to remember

Unsealed roads are typically covered with loose material like gravel or dirt, which can become corrugated and has less traction than a sealed road.

Remember to:

- Always slow down on bends and drive to conditions
- Do not brake suddenly
- Keep your low beams on
- Stay alert and watch for animals
- Keep a safe distance from all other vehicles
- Ensure you have spare tyres with you
- Learn what to do if your vehicle gets bogged
- Stay on the roads. The land on either side of unsealed roads is private property, even if there is no fence.

Remember to check road closures or roadworks impacts by visiting our [Travel Map](#)

Further information

For further information you can subscribe for updates on the [Main Roads website](#), or contact our [Customer Information Centre](#) on 138 138.