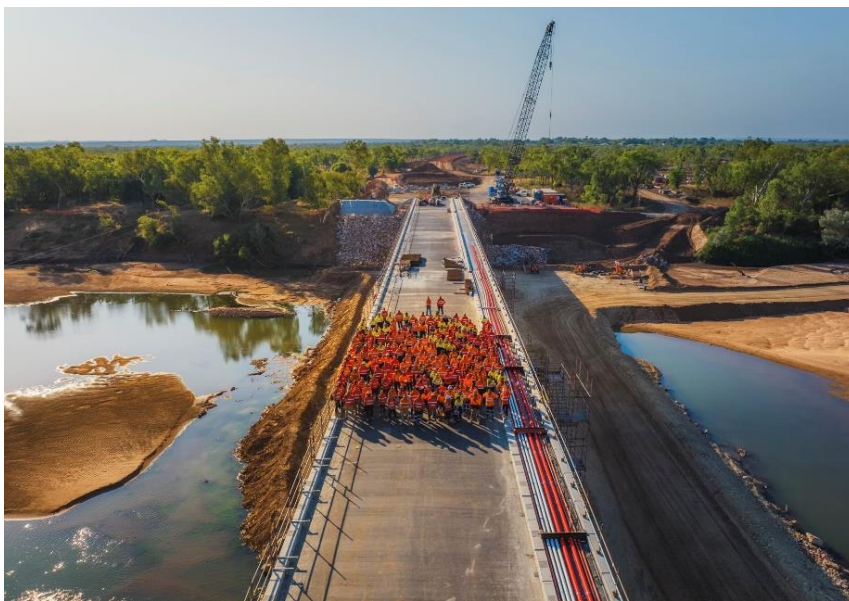


New Fitzroy River Bridge Project

New Fitzroy River Bridge nearing opening



The New Fitzroy River Bridge continues to make steady progress with the bridge on track to open by the end of the year. Work is continuing around the clock as we prepare for pedestrian and vehicle access.

Main Roads remains committed to keeping the local community and industry informed about the bridge's upcoming opening and any potential traffic restrictions.

Traffic will continue to be detoured through the single lane crossing until the new bridge is open.

Above: Workers on top of the new bridge deck.

Rock protection for river embankments

Work is continuing to place more than 100,000 tonnes of rock along the eastern and western embankments. This will help protect the embankments from further erosion and prevent damage to the new bridge structure.

Rock deliveries and placement activities are currently taking place 24 hours a day. Nearby residents and visitors may hear some noise during this time. We apologise for any disruption.

Bridge approaches and road surfacing

Construction of the new bridge approaches and earthworks on Great Northern Highway, between Brooking Channel Bridge and Yurabi Road, are progressing well.

In mid-November, an asphalt mixing plant will be temporarily installed on site to allow the bridge to be asphalted and sealed in preparation for traffic. The mixing plant may release unpleasant fumes while in use. We apologise for any discomfort and inconvenience this may cause.

Right: Great Northern Highway reinstatement.



Spotlight on the New Fitzroy River Bridge Schools Program

The project's dedicated Schools Program has been designed to engage high school students from Fitzroy Valley District High School. The program provides hands-on, unique learning opportunities for students through regular site visits, presentations, events and traineeships.

Site visits

Regular visits to the worksite provide students with first-hand experience of the bridge project. They're able to watch the construction progress and gain a deeper understanding of the engineering and construction processes involved. For many students, these site visits are even more exciting as they get to see their family and friends working on the bridge.

Remote community schools are also invited to take part in visits to explore the bridge site and learn more about the project's construction.



Above: Fitzroy Valley DHS standing under the bridge.

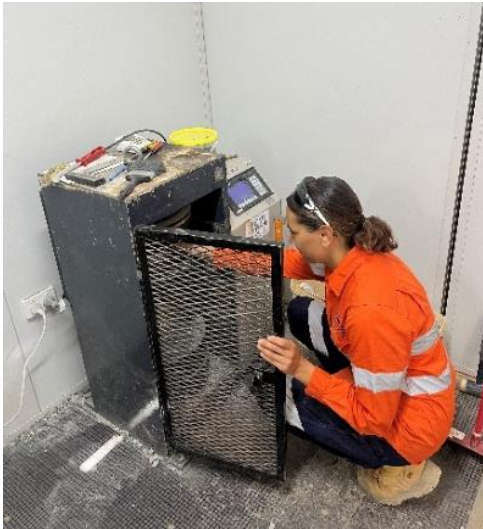
Presentations

The schools program also includes presentations by workers who take the students through a hands-on activity related to their field. Students can then ask questions and learn more about the different job opportunities in each area.

Traineeships

Traineeships are available for students with a keen interest in gaining work experience. The traineeships provide opportunity to learn from workers on the ground.

Letisha is one of the first students to take part in a traineeship, originally joining the team in the soil testing lab once a week. With Letisha now finished Year 12, she looks forward to joining the team for the remainder of the project.



Above: Letisha testing concrete in the lab.

In the community

Celebrating culture in the Valley

The project is proud to support key local events in the Fitzroy Valley that encourage community spirit and culture.

In September, the project took part in Skutta Bloke Day; a day celebrating healthy male relationships and role models in the Fitzroy Valley. Students and families enjoyed a video on the bridge's construction, took part in a basketball competition, and explored some construction machinery.

In early October, the Valley celebrated the community's resilience following the floods through the Stronger Together Festival. Together with the Shire, the project hosted an opening event with impacted residents and helped build a drone launch pad to facilitate a dreamtime light show.



Above: Dreamtime Drone show at Stronger Together Festival.



Movie nights under the bridge

Last month, community members were invited to watch a series of movies which were projected onto the new bridge piers.

It was a one-of-a-kind chance to catch a movie from the banks of the Fitzroy River, while also checking out how the bridge is coming along.

Left: Community members enjoying a movie under the bridge.

Jobs and employment

Training in the field

The project recently welcomed a new trainer and assessor who is helping local workers to achieve national competencies on different construction machinery.

Workers can elect which areas they're interested in, before completing practical training and assessments.

Ongoing support for small business

Fitzroy Crossing recently welcomed back Kris Young from Many Rivers, who provides ongoing support to people interested in starting or developing a business.

This support includes assistance with refining a business structure, developing business plans, and writing capacity statements to gain work.

Kris is due back in town again in mid-November to continue working with new and emerging businesses. To book in a catch up, call Kris on 0477 373 908.

Further information

For more information about the project:

- Chat to the team in the Old Café in Fitzroy Crossing
- Visit the Main Roads project page: mainroads.wa.gov.au/new-fitzroy-river-bridge,
- Email enquiries@mainroads.wa.gov.au or
- Call 138 138.



Above: Natarlia operating a roller after completing training and obtaining national competency.