



Australian Government



mainroads
WESTERN AUSTRALIA

BUNBURY OUTER RING ROAD | PLANNING AND DEVELOPMENT

BUILDING OUR FUTURE

Bunbury Outer Ring Road Southern Community Reference Group

5 March 2019




Agenda

5:00	Arrival – light refreshments available from 4:45pm	
5.30	Welcome	Linton Pike
	Meeting Purpose and Context	Linton Pike
	Previous Meeting Action Closeout	Dominic Boyle
	Environmental Approval Process	Martine Scheltema
	Alignment Selection Update	Padraic Murphy
	WRP Regional Survey	Martine Scheltema
	Gelorup Connection Update	Padraic Murphy
	CRG Member Round Table Discussion	CRG Members
	Next Steps	Dominic Boyle
8.30	Close	Linton Pike



Meeting Purpose and Context

A blurred image of a white truck with blue and red accents driving under a concrete bridge structure. The truck is moving from left to right, and the background shows the underside of the bridge with concrete beams and supports. The overall scene is dimly lit, suggesting an overcast day or a tunnel-like environment.

Previous Meeting Action Closeout



Environmental Approval Process

Martine Scheltema

Environmental values

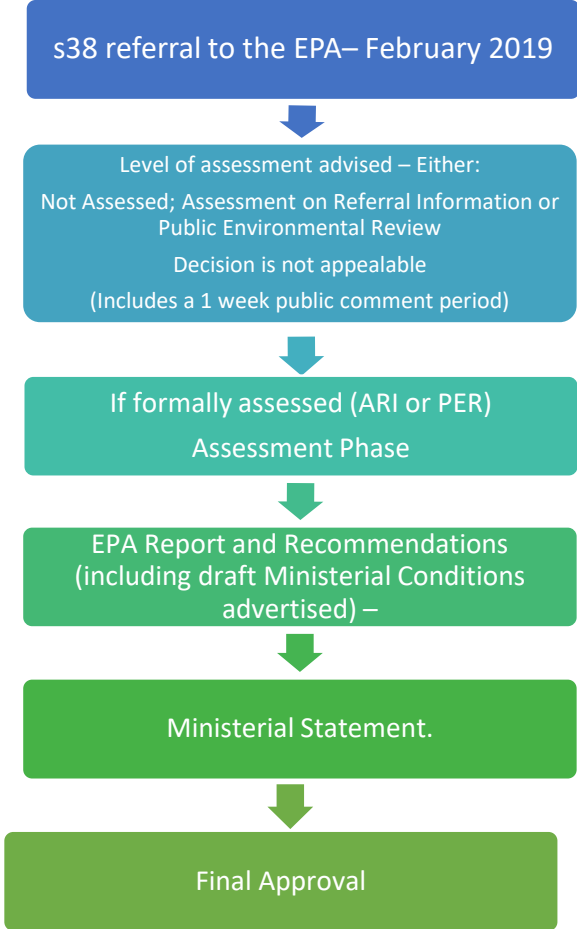
Environmental value	Progress
Fauna <ul style="list-style-type: none">- WRP's observed in some patches of native vegetation- Evidence of black cockatoo activity, mostly foraging	Field investigations are complete. Data interpretation and reporting is in progress.
Aquatic fauna <ul style="list-style-type: none">- Black striped minnow (Endangered)- Carters fresh water mussel (Vulnerable)- Western Mud minnow (Vulnerable)	Field work complete. Reporting in progress
Wetland assessment <ul style="list-style-type: none">- Conservation Category wetlands- Non-classified wetlands	Field work complete. Reporting in progress
Flora and vegetation <ul style="list-style-type: none">- Banksia woodland TEC- Priority species	Taxonomy is complete Reporting is in progress

Amenity value

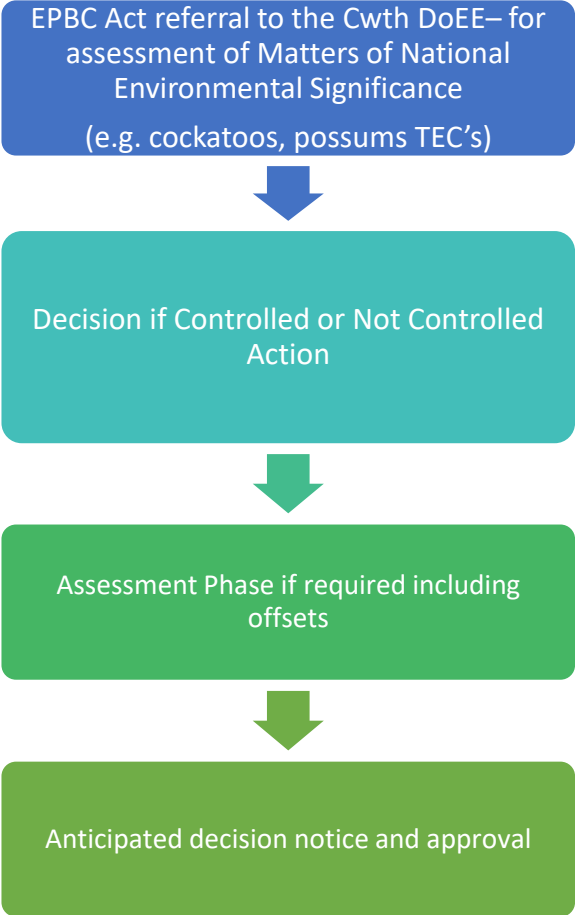
Environmental value	Progress
Aboriginal heritage	Desktop assessment complete
European heritage	Completed for BORR South Alternate Corridor

Proposed Approvals pathway

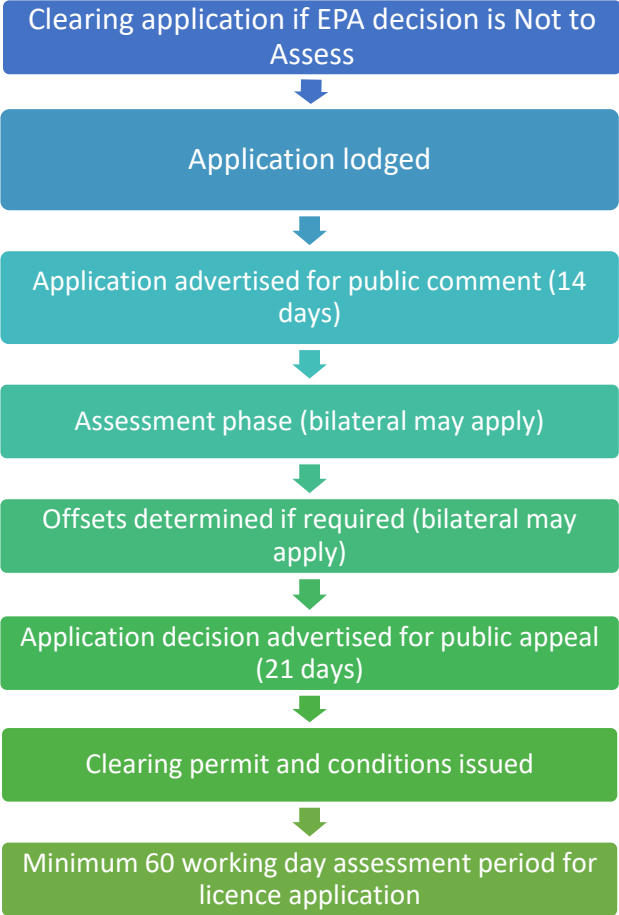
Part IV EP Act (WA)



EPBC Act (Commonwealth)



Part V EP Act (WA) Native Vegetation Regulations



European heritage findings – Built heritage

Summary of the important built heritage

Heritage Category	Place, description and condition	Relationship with current landholders
C	All Souls Church, Boyanup West Road. Good condition	Important to members of the Scott and Roberts families
C	Site of Stratham School, Boyanup West Road. Nothing remains	Descendants of children who attended the school live in the area.
C	Site of Elgin-Stratham Sports Club, Boyanup West Road. A cricket pitch remains on the site.	The Sports Club, was very popular and several of the long-term residents in the area recall playing cricket there.
C	'Roselands', former homestead. Very poor condition *	Important to Scott family members
B	'Rosemore', former homestead. Poor condition. *	Important to Roberts family members
C	'Sunnyside', a current homestead. Good condition	Important to Scott family members
C	'Stratham Park', a current homestead. Good condition. Not within the alternative investigation corridor *	This land and house are very significant to the Scott, Roberts and Bourne families.
C	Elgin Hall. Good condition. Not within the alternative investigation corridor	Used regularly for events involving all landholders in the area



Elgin Hall, with shed for fire-fighting equipment attached

* On Shire of Capel Heritage list

European heritage findings – social and cultural heritage

- Pioneer settlement in the 1850's to early 1900's
- Many people in the area are related to each other as well as to many people outside the immediate area
- Complex family relationships link back to a strong sense of belonging to the land, its agricultural use and features, notably the wetlands.
- Culture of helping one another for example, the Volunteer Fire Brigade, sport (esp hockey) and attending regular community events at Elgin Hall over many years.

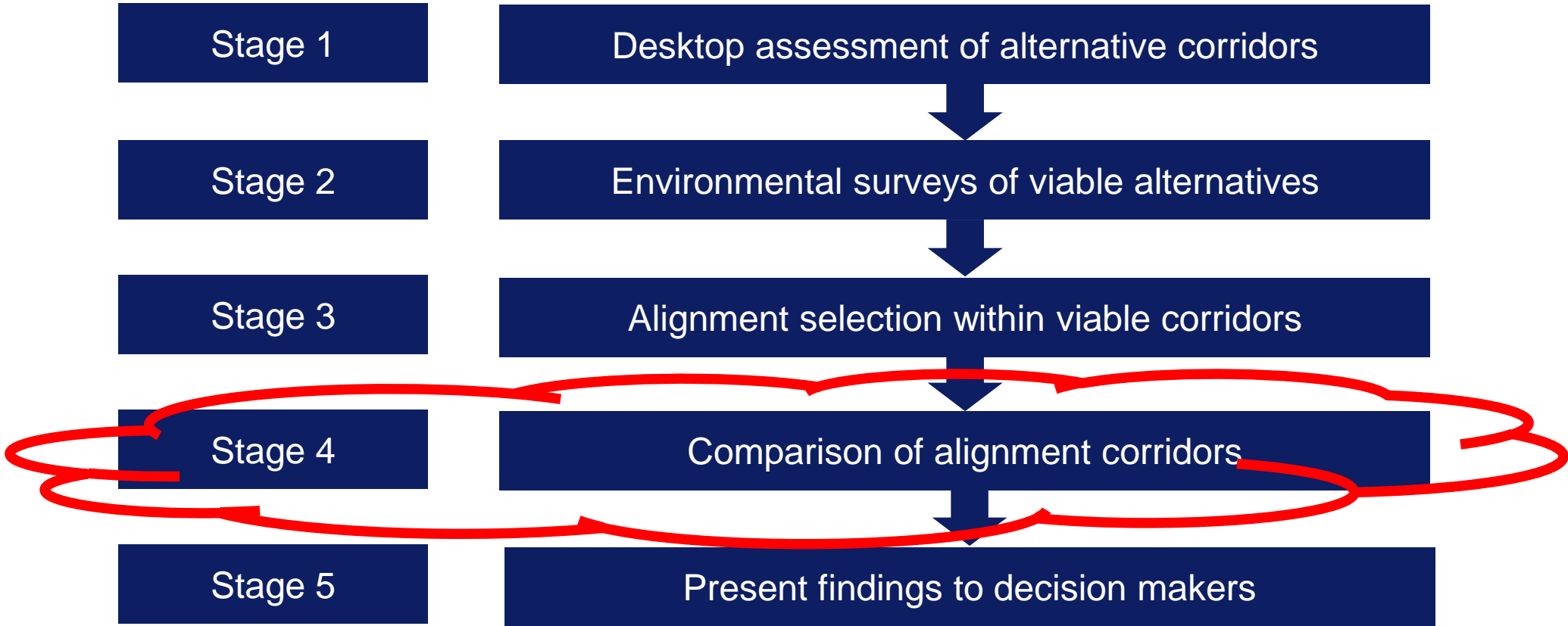


Calinup Lake



Alignment Selection Update

Padraic Murphy



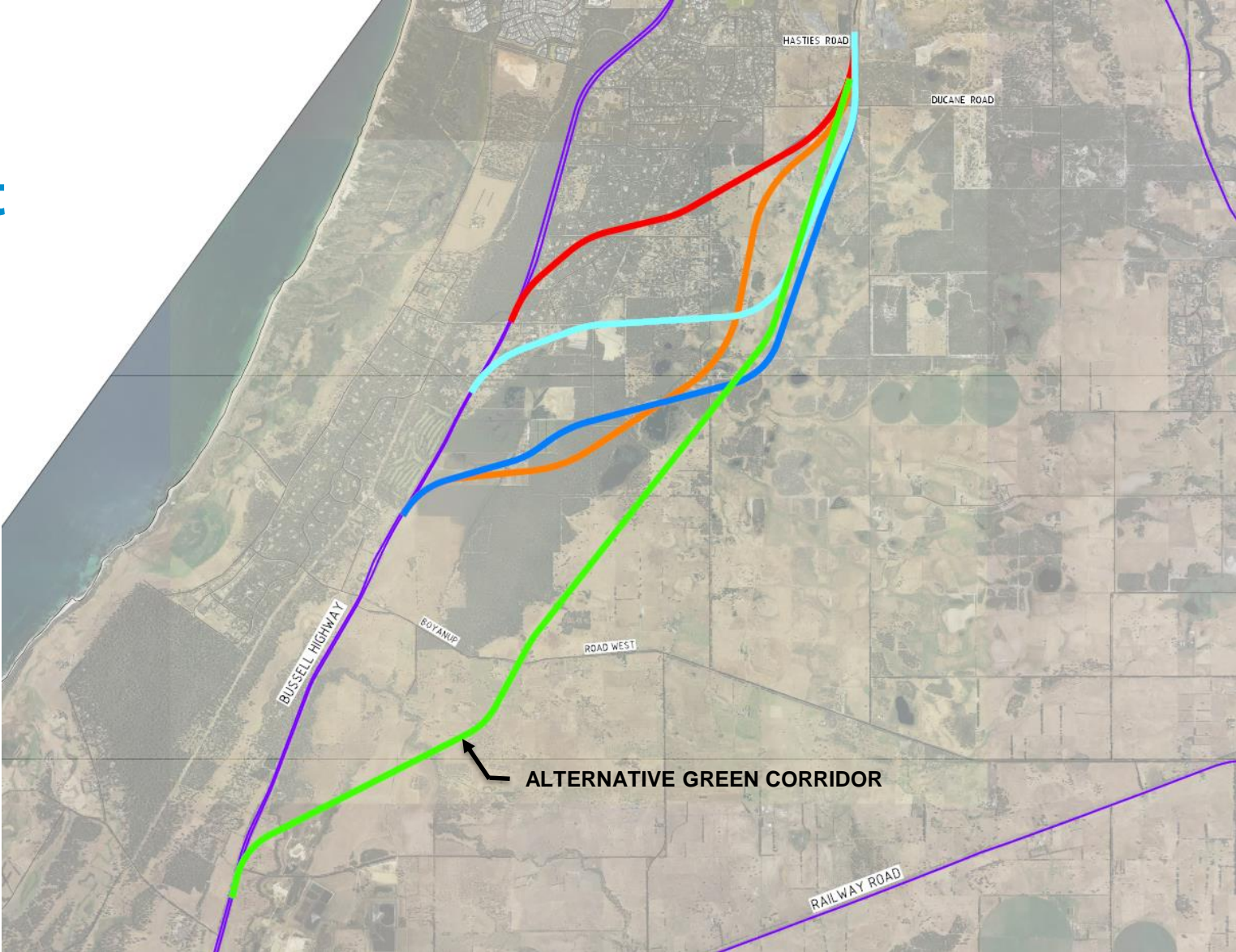
How we got to this point?

1. Historical options assessment process would not stand up in the current environmental processes.
2. Elevation of Western Ring Tail Possum status to Critically Endangered (April 2018).
3. Alignment also impacts other Federally listed values – Black Cockatoo, Banksia Woodland
4. Environmental Referral Process requires the assessment of alternative options.

Progress to Date

- Previous planning assessments undertaken in the late 1990s considered various environmental, heritage, land, social and other constraints in order to define a potential route. The IPT have reviewed this work.
- Alternative Green corridor identified at a desktop level.
- Environmental investigations of two corridors undertaken between September to December 2018

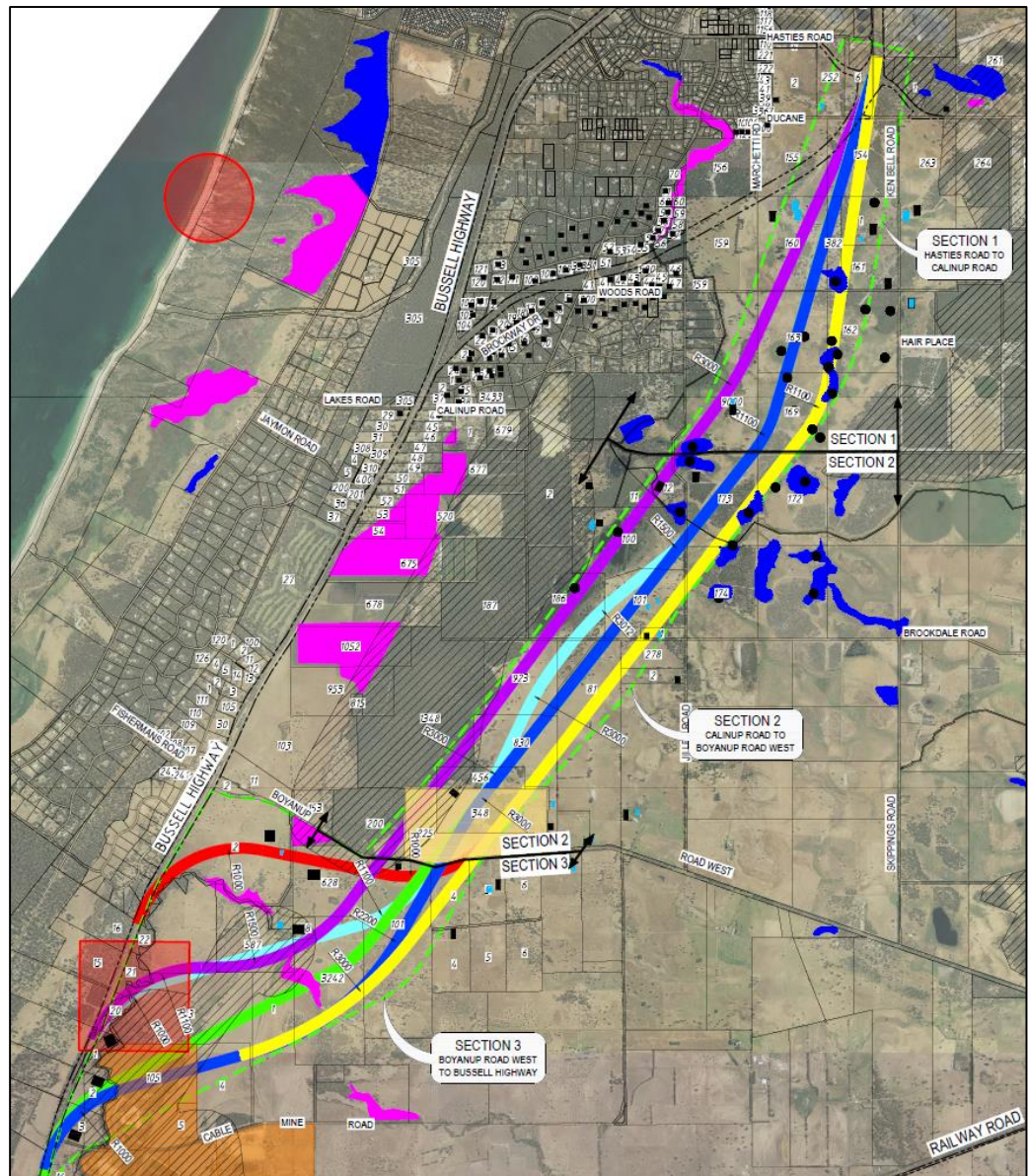
Desktop Assessment



A blurred image of a truck driving under a concrete bridge. The truck is moving from left to right, and its motion is captured with a horizontal blur effect. The bridge's concrete structure is visible above the truck. A dark blue rectangular overlay is positioned on the right side of the image, containing the text "Green corridor refinement" in white, bold, sans-serif font.

Green corridor refinement

Considered Alignment Options (within BORR South Alternative corridor)

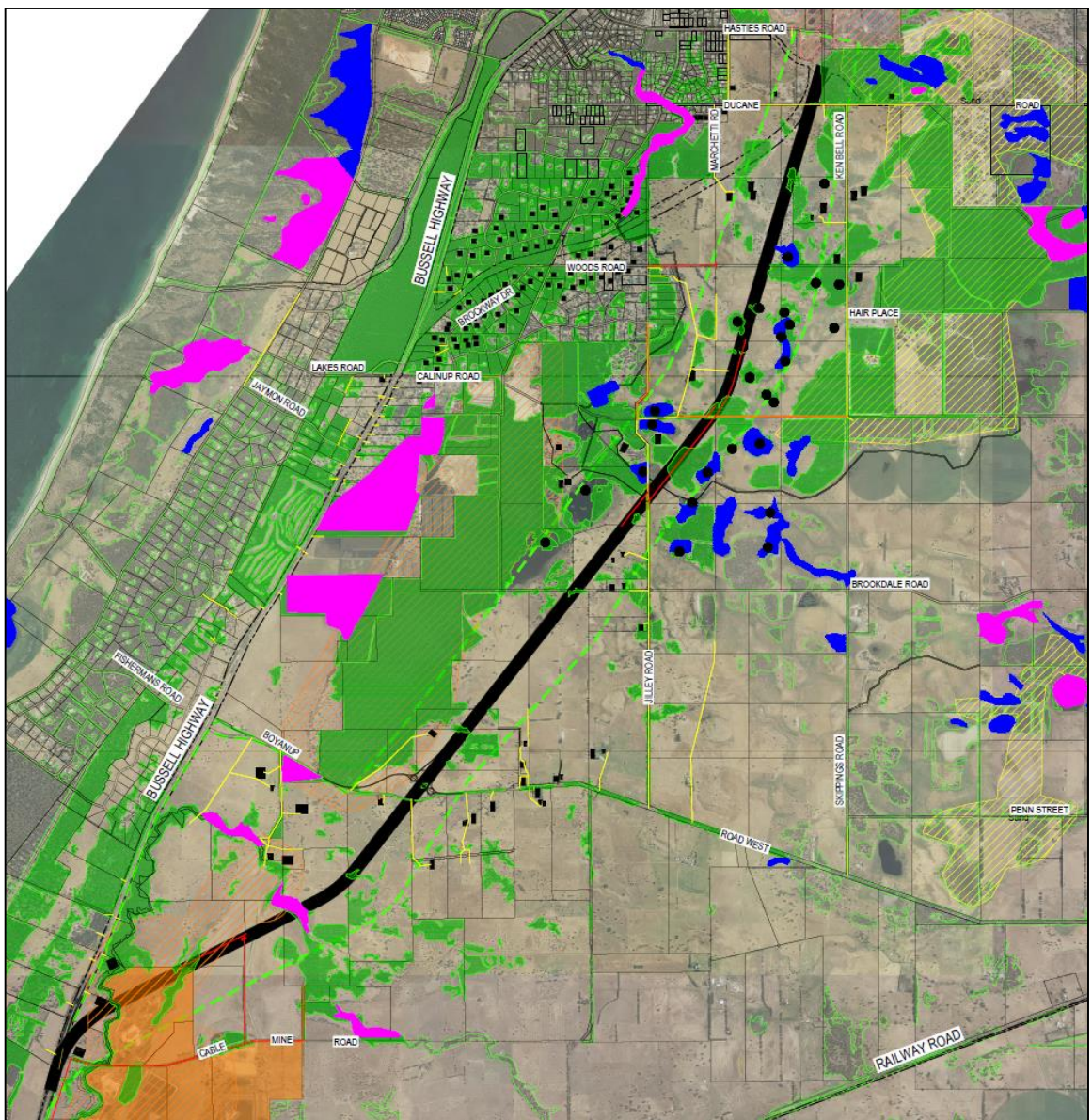


Assessment Criteria

Environmental & Ecology	Community & Social	Economic	Engineering
Wetlands (CCW and Resource Enhancement)	Impact on Residential Properties (Direct Impact & Severance)	Whole of Life Cost	Acid Sulphate Soils & Contaminated Sites
Remnant Native Vegetation	Impact on Commerical Properties	Utilities Impact Costs	Network Operations
Rare and Priority Flora Sites	Noise and Visual Amenity	Strategic Agricultural Resources & Basic Raw Materials	Road Geometry
Fauna Habitat			Geology
Rare Fauna (WRP)			Constructability
TECs			Whole of Life Cost
European Heritage			
Aboriginal Heritage			

- The selection criteria are those regularly used for alignment selection.
- The criteria have been reviewed and synthesized to align with the project objectives and IPT objectives/ focus areas.

Alignment for assessment (within BORR South Alternative corridor)



A blurred high-speed train is shown in motion, passing under a concrete bridge structure. The train is white with blue and red accents. The bridge has several large concrete pillars. The background is a solid blue color.

Scope for two corridors

GBRS Alignment

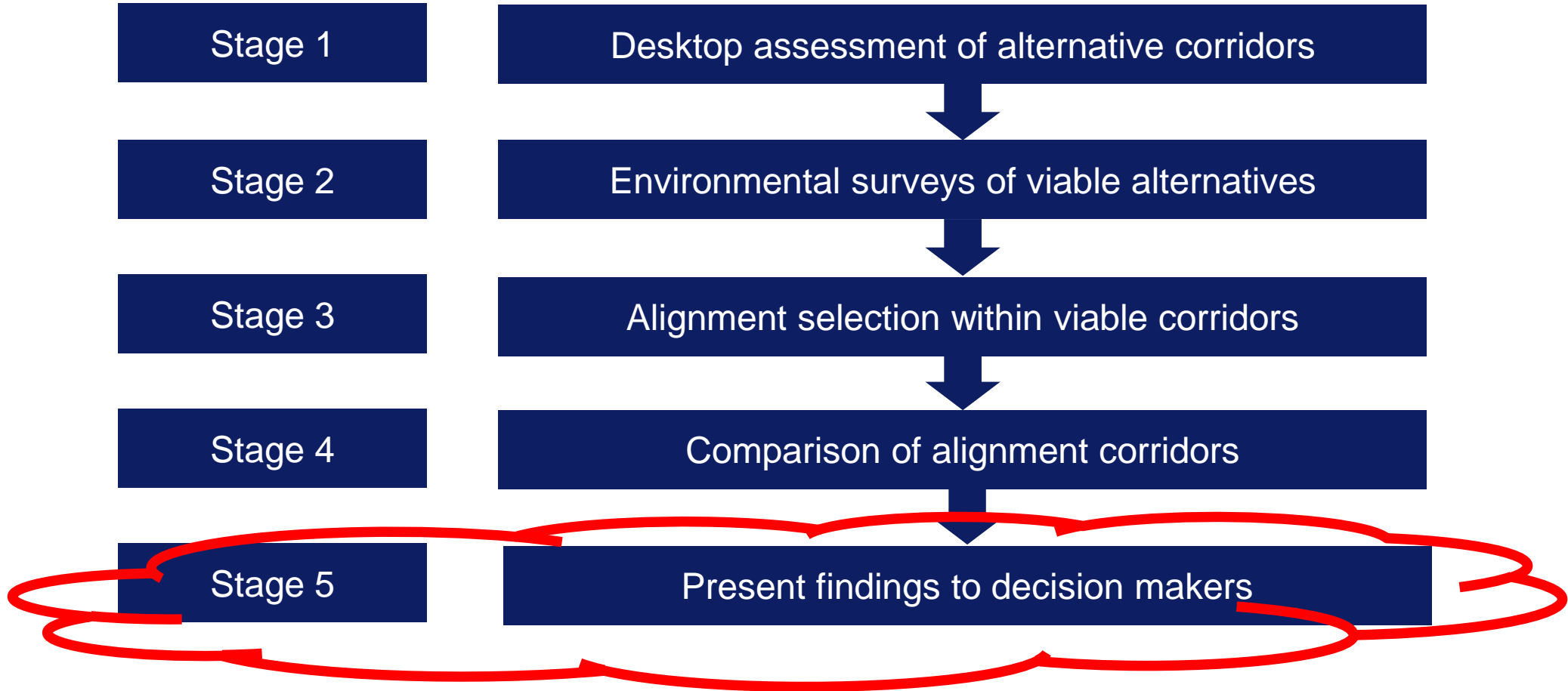
Key Scope inclusions:

- Yalinda Drive Grade Separation
- Bussell Hwy / BORR Y-interchange
- Boyanup West Road Interchange
- Principal Shared Path (to Lakes Road)
- Significant Local access roads

Alternative Alignment

Key Scope inclusions:

- Bussell Hwy / BORR Y-interchange
- Boyanup West Road Interchange
- Significant local access roads (includes 2 road underpasses)
- Principal Shared Path (to Boyanup Road West)



A blurred image of a white truck with a red stripe and blue and white patterns on its side, moving under a concrete bridge. The truck is in motion, creating a sense of speed. The bridge structure is made of concrete and has several large pillars. The background is a solid blue color.

WRP Regional Survey

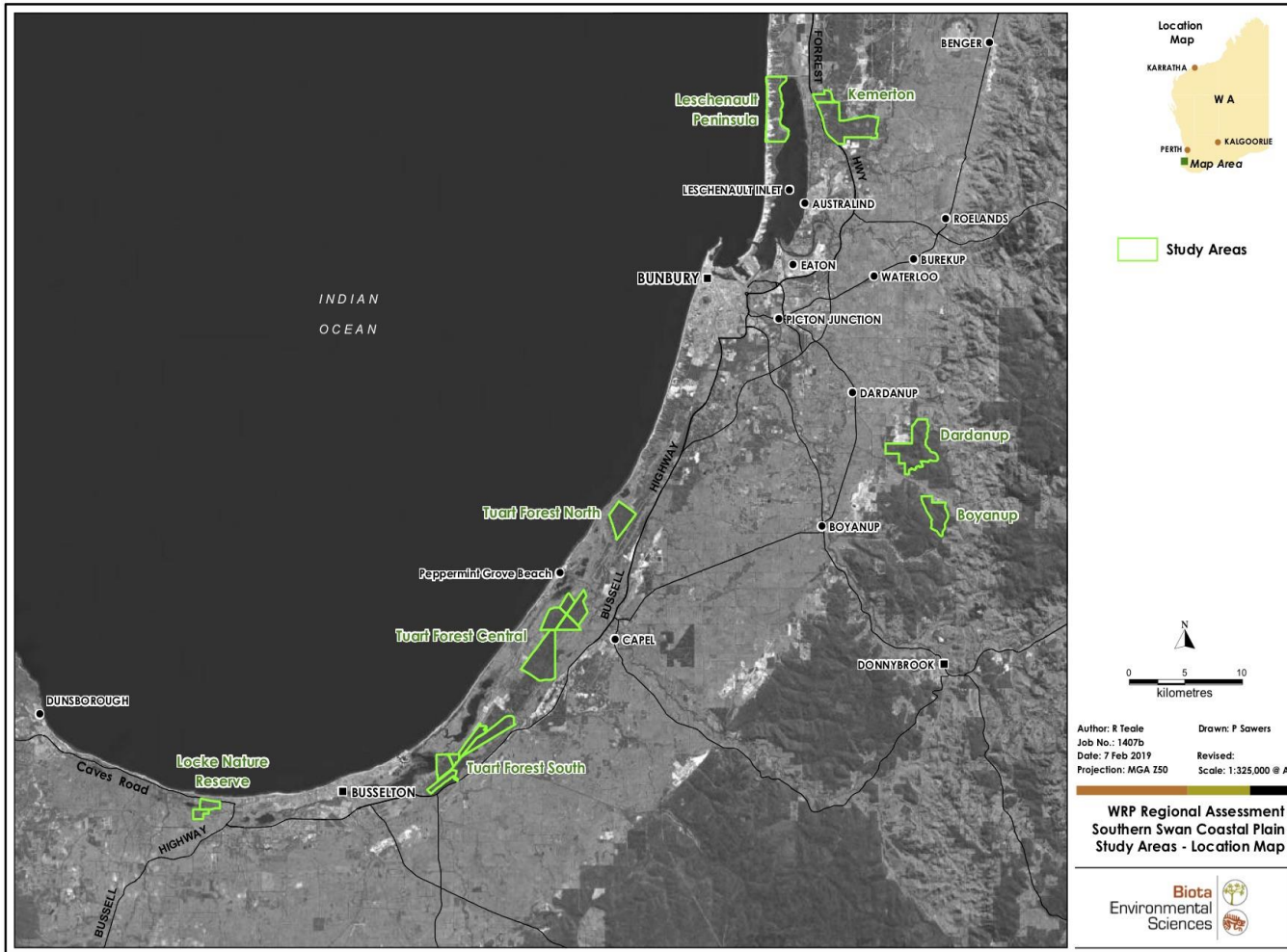
Martine Scheltema

Regional Western Ringtail Possum Survey

- The total WRP population estimated to be 3,400 in 2017
 - 2,000 of the 3,400 on the southern Swan Coastal Plain
- Main Roads has initiated Regional Surveys to determine if number is accurate
- Methodology agreed by DBCA and WRP Recovery Team
- Survey of Southern Swan Coastal Plain complete:
 - 5,373 animals
 - under-estimate as only surveyed large areas of vegetation; animals in urban, peri-urban and vegetation in agricultural areas not sampled
- Currently surveying Cape to Capes, Southern Forests and Albany areas to get a total estimate for the species. Will be completed by early April



Study sites for WRP regional survey- Southern Swan Coastal Plain





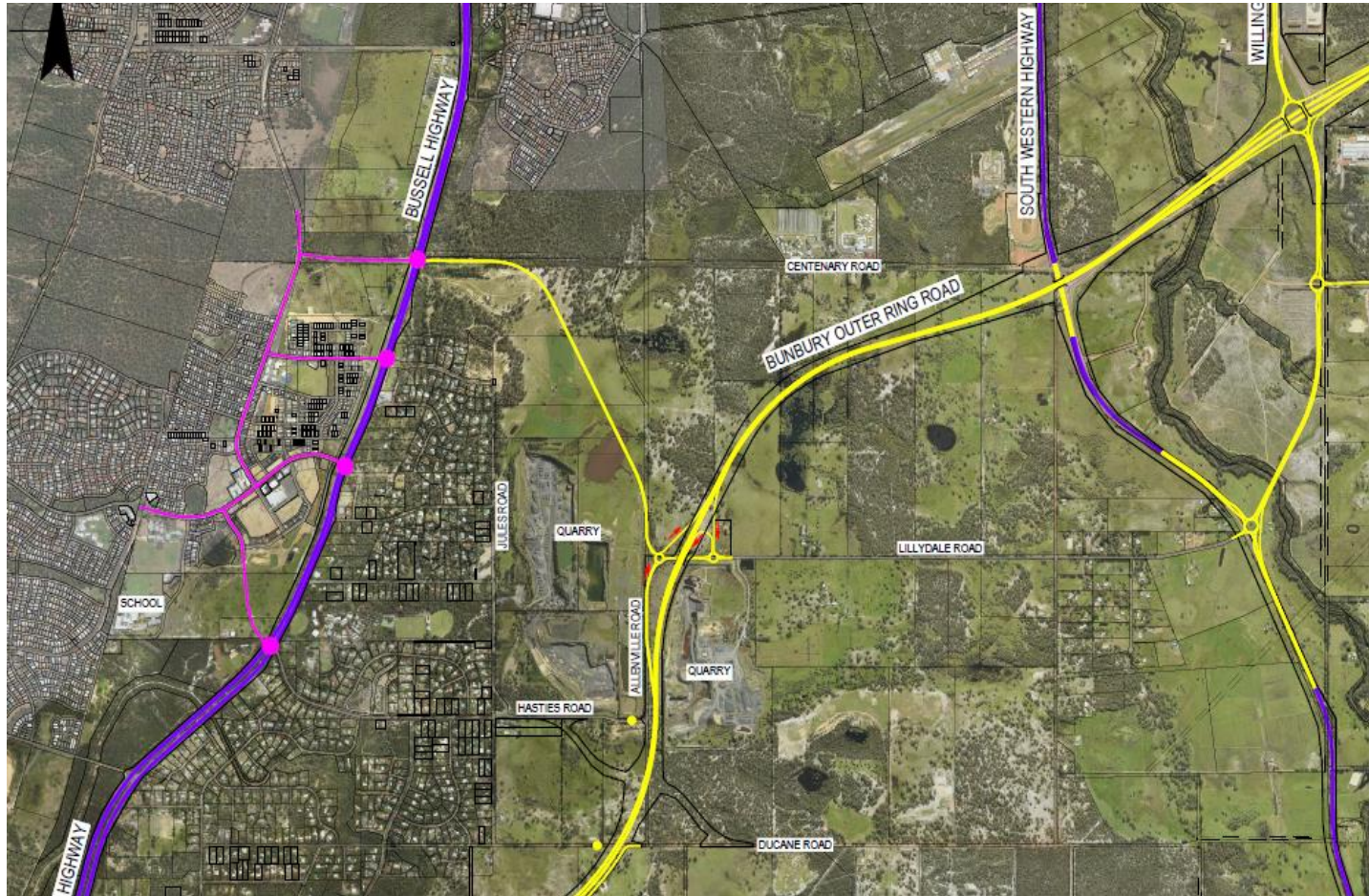
Study sites for surveys for the Western Ringtail Possum for the Bunbury Outer Ring Road Project.



Gelorup Connection Update

Padraic Murphy

BORR Team Recommended Connectivity



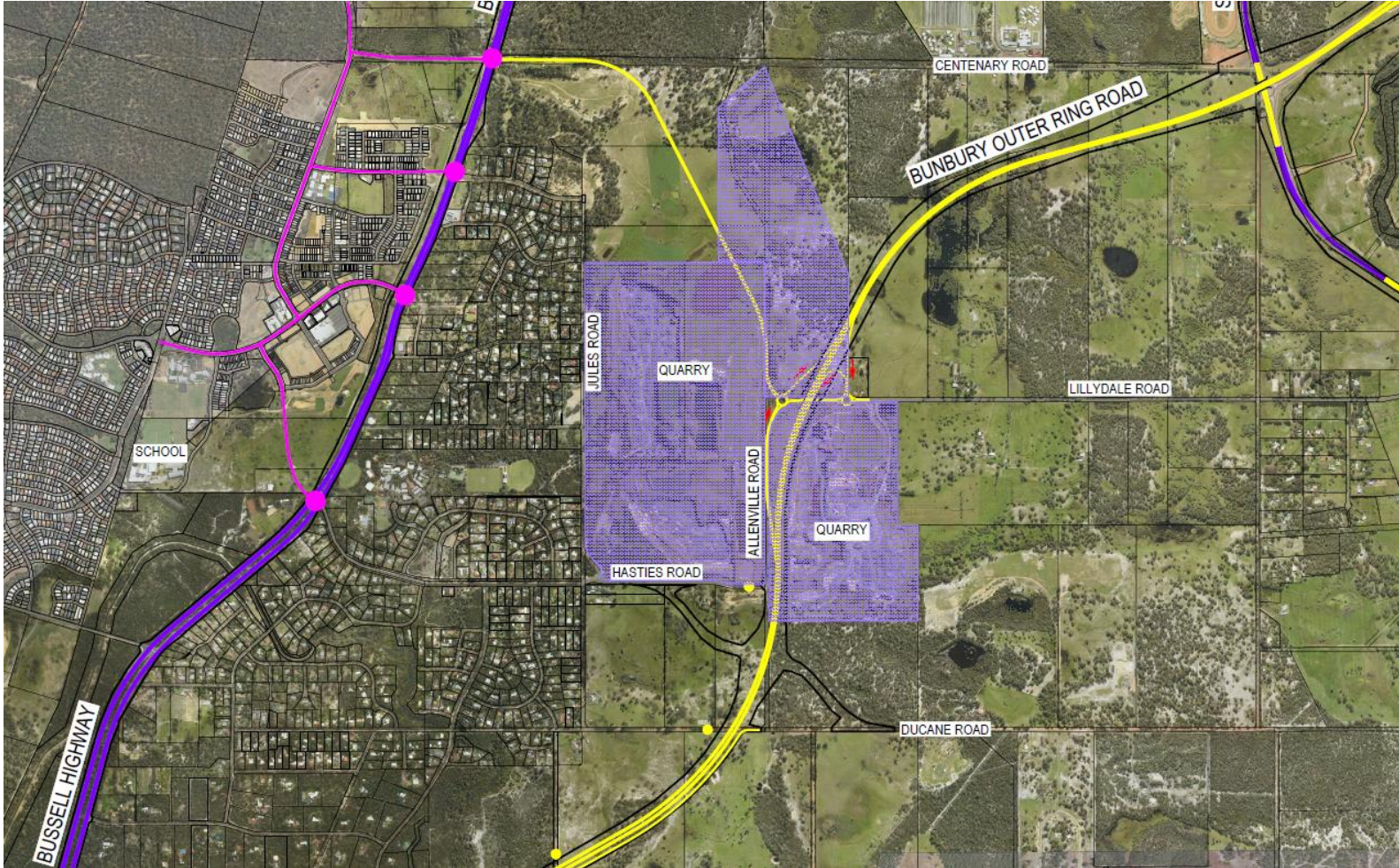
BORR Team preferred connection between Bussell Highway and BORR is Centenary Road linking to Lilydale Road.

Local access requirements need to be resolved.



BORR Team Recommended Connectivity

Basalt Resource Area Consideration



BORR Team Recommended Connectivity

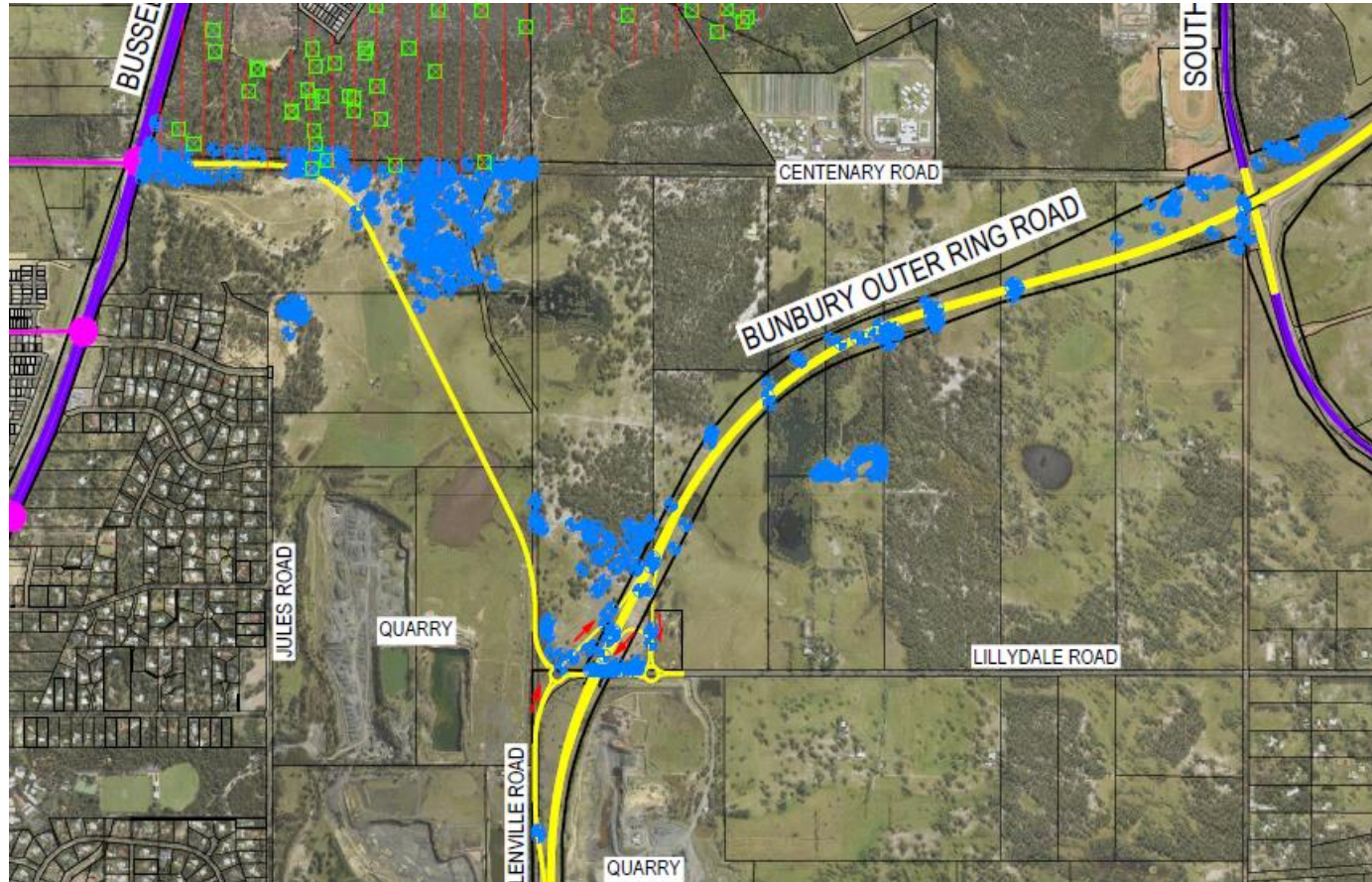


Australian Government

mainroads
WESTERN AUSTRALIA

BUNBURY OUTER RING ROAD | PLANNING AND DEVELOPMENT

BUILDING OUR FUTURE



Environmental Considerations

Green Dot = Observed Possum
Blue Dot = Potential Black
Cockatoo Habitat

BORR Team Recommended Connectivity



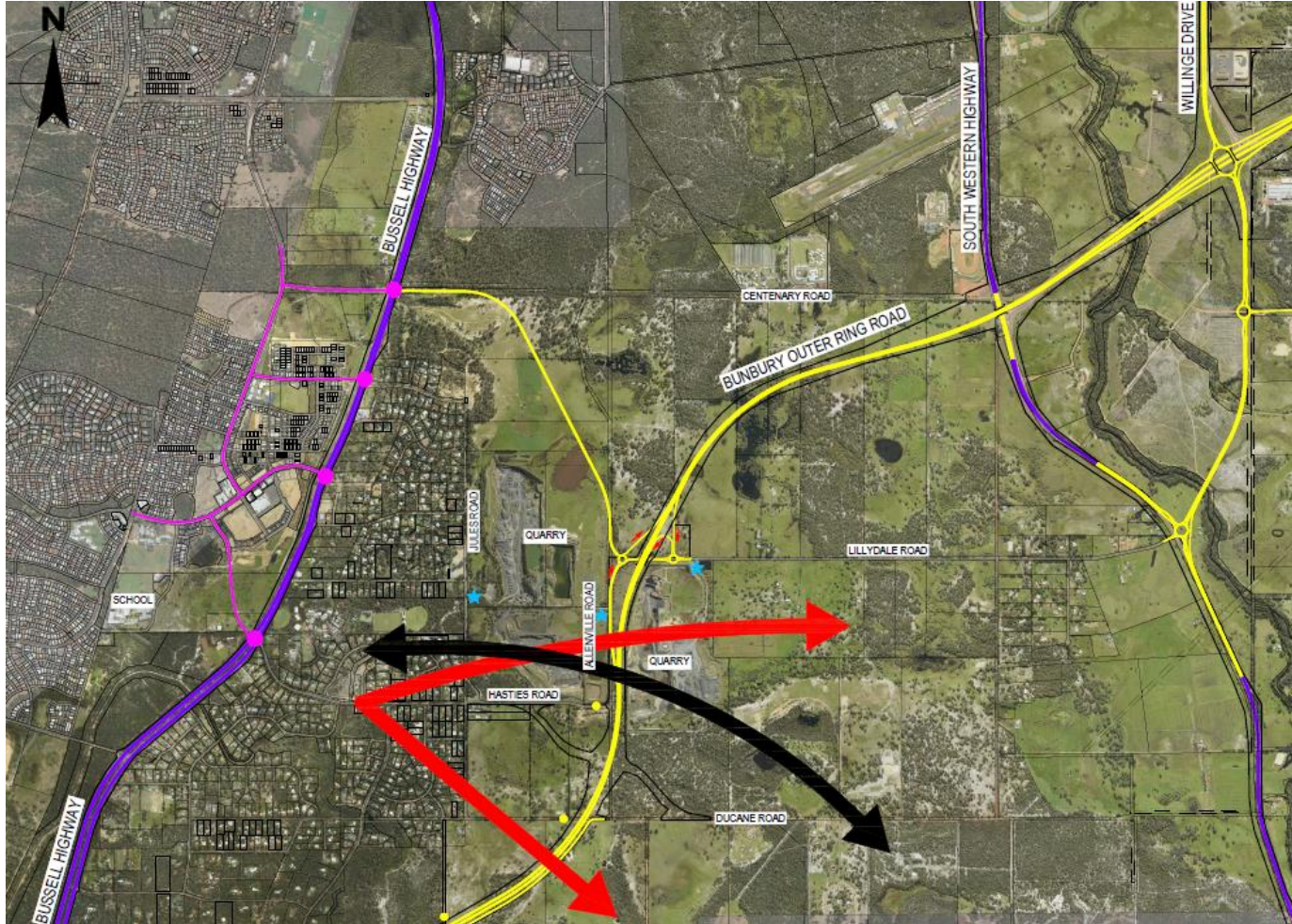
Australian Government

BUILDING OUR FUTURE



mainroads
WESTERN AUSTRALIA








BUNBURY OUTER RING ROAD | PLANNING AND DEVELOPMENT



Local Access Requirements

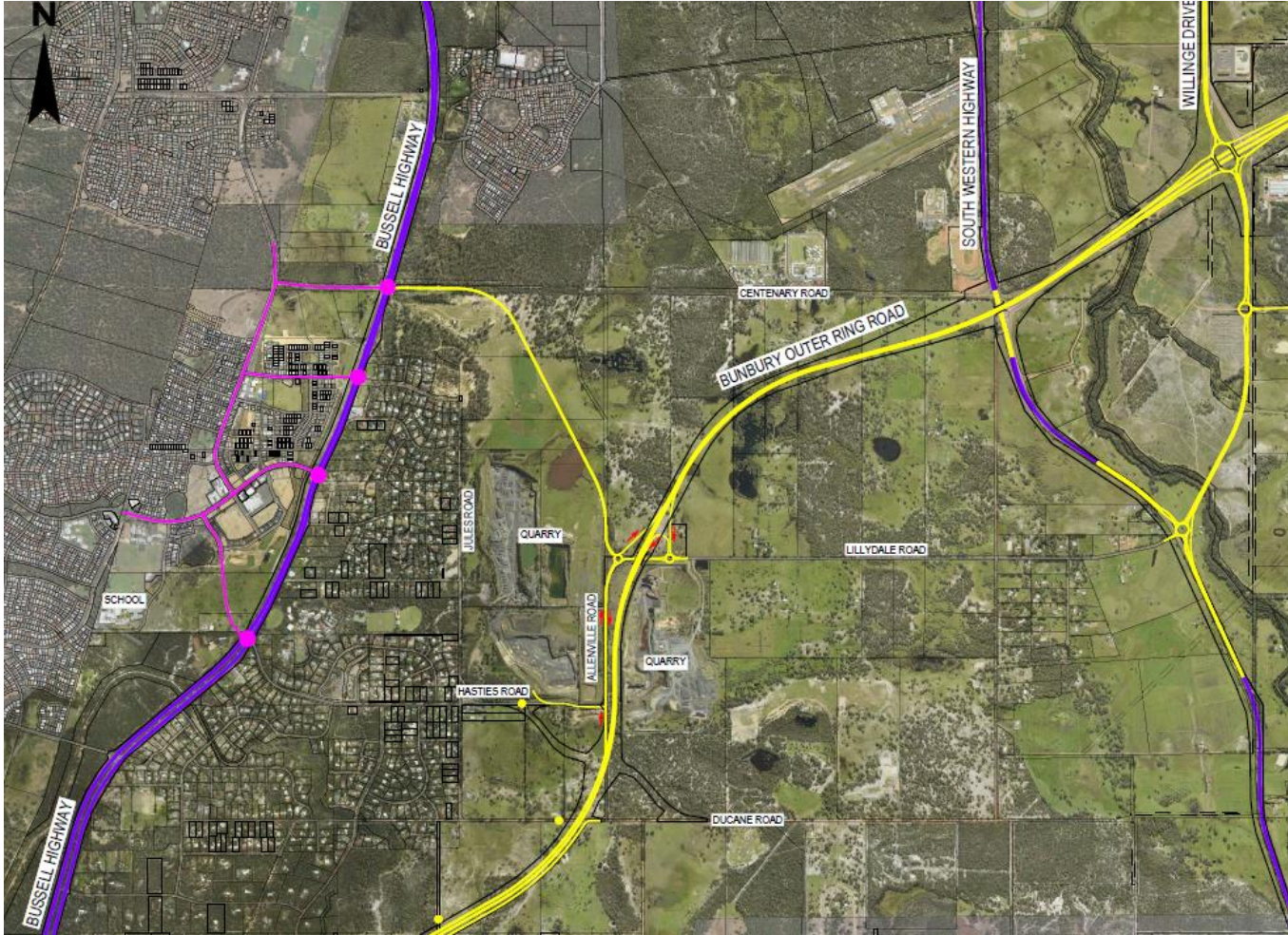
What we have heard to date:

- Fire and Emergency
- Community Linkages
- Quarry Access

LEGEND	
	DESIGN OPTION
	DALYELLUP EAST STRUCTURE PLAN SIGNIFICANT ROADS
	CUL-DE-SAC
	TRAVEL DIRECTION
	QUARRY ACCESS POINTS
	COMMUNITY LINKAGES
	FIRE ACCESS REQUIREMENT



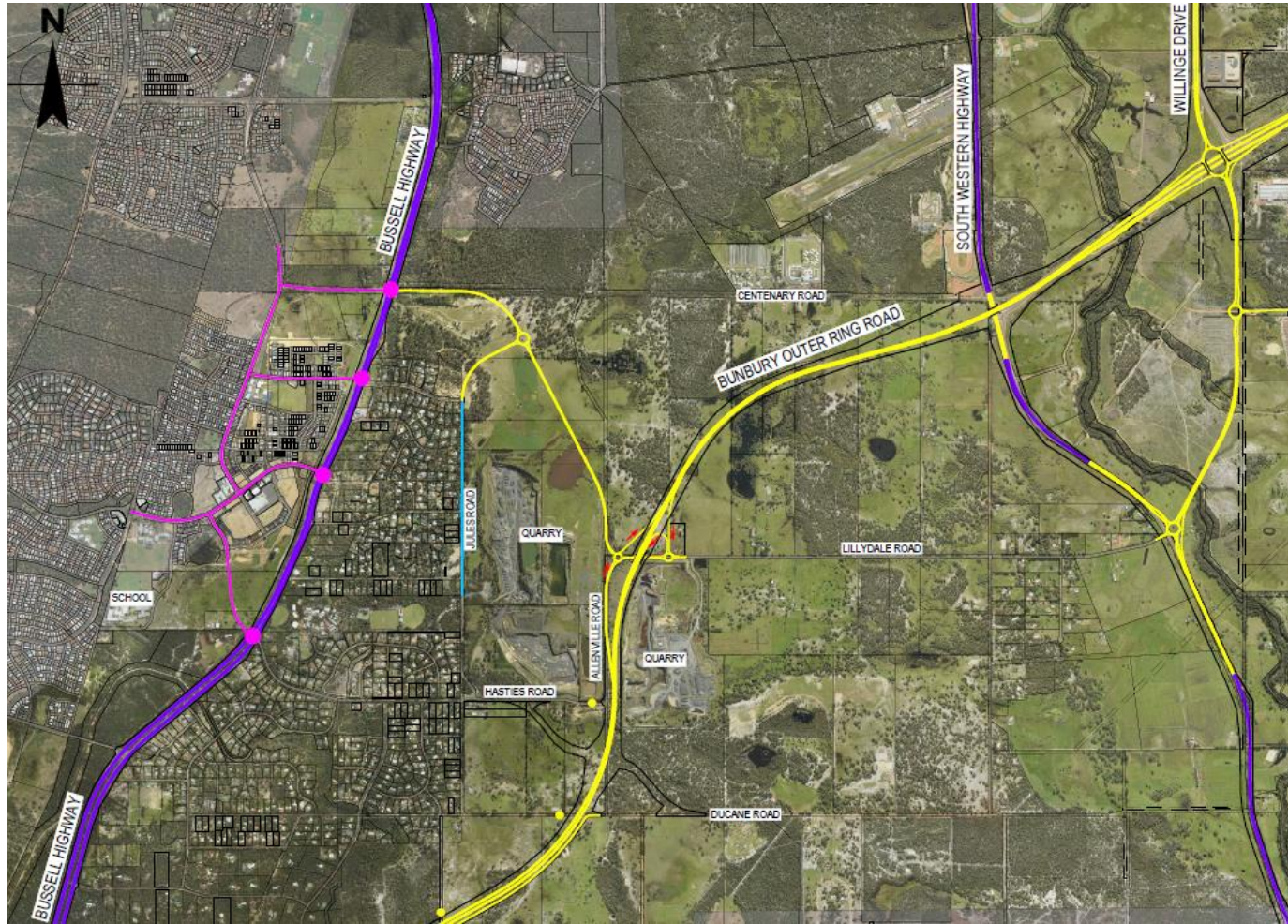
BORR Team Recommended Connectivity



Access Option No. 1

- Hasties Road Cul de Sac
- Quarry Access to Alleville Only

BORR Team Recommended Connectivity



Access Option No. 2

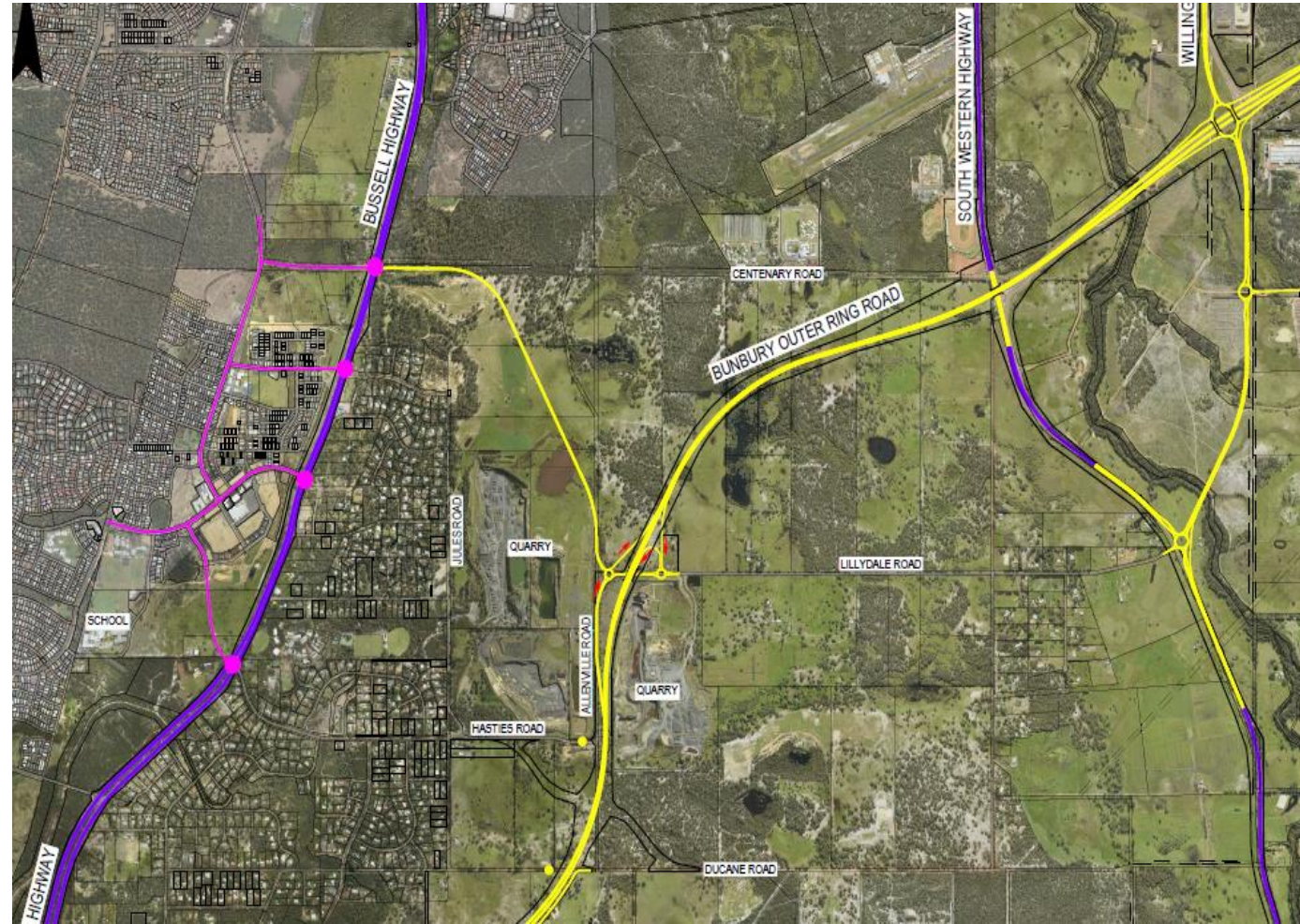
- Hasties Road Cul de Sac
- Jules Road Connected to Centenary Road

BORR Team Recommended Connectivity



Other Access Option

- CRG Input
- What other local access options should be considered?



BORR Team Recommended Connectivity

Where to from here?

- BORR Team will take Centenary Road recommendation to the Project Enabling Group and Project Steering Committee
- CRG members have provided suggestions on how to improve the Centenary Road alignment, these will be reviewed.
- Consultation with landowners will continue.
- Assessment of local connectivity requirements will be completed and reported back to CRG.



**CRG Member
Round table**

The image shows a blurred, futuristic train or tram moving through a tunnel or underpass. The train is white with blue and red accents and is moving from left to right. The background is a dark, industrial-looking structure with concrete pillars. A dark blue rectangular overlay is positioned on the right side of the image, containing the text "Next Steps" in white, bold, sans-serif font.

Next Steps