

APPENDIX A FIGURES (Figure 8)

Figure 1 Proposal Area

Figure 2 Current Proposal Area and 2012 EP Act Referral Proposal Area

Figure 3 Vegetation Condition and Weeds

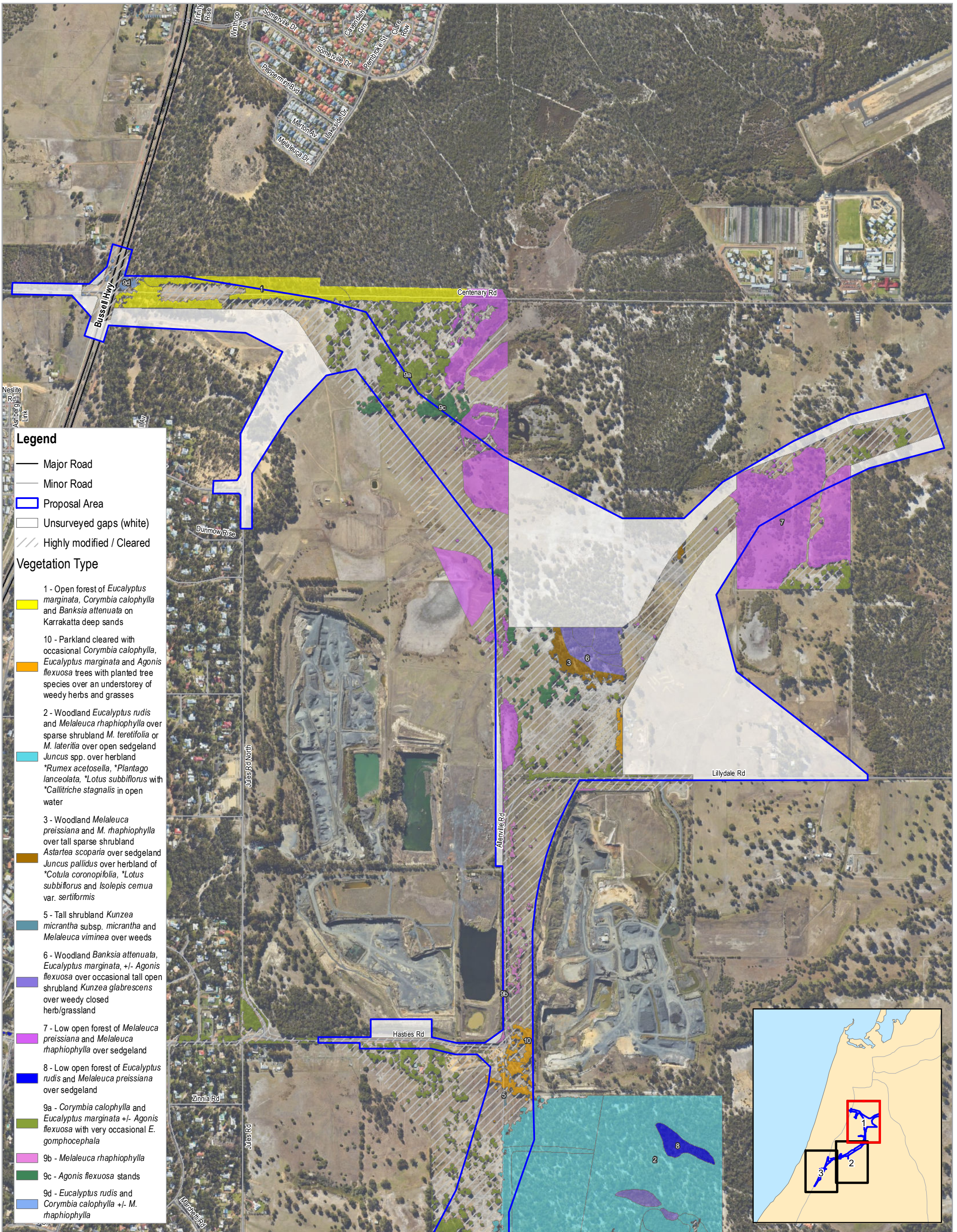
Figure 4 Surveyed and Unsurveyed Areas

Figure 5 Threatened Ecological Communities (Banksia Woodland TEC)

Figure 6 Black Cockatoo Habitat and Observations

Figure 7 Western Ringtail Possum Habitat and Observations

Figure 8 Vegetation Types

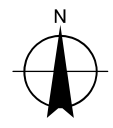
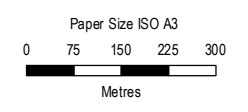


Legend

- Major Road
- Minor Road
- ▭ Proposal Area
- ▭ Unserved gaps (white)
- ▨ Highly modified / Cleared

Vegetation Type

- 1 - Open forest of *Eucalyptus marginata*, *Corymbia calophylla* and *Banksia attenuata* on Karrakatta deep sands
- 10 - Parkland cleared with occasional *Corymbia calophylla*, *Eucalyptus marginata* and *Agonis flexuosa* trees with planted tree species over an understorey of weedy herbs and grasses
- 2 - Woodland *Eucalyptus rudis* and *Melaleuca raphiophylla* over sparse shrubland *M. teretifolia* or *M. lateritia* over open sedgeland *Juncus* spp. over hermland **Rumex acetosella*, **Plantago lanceolata*, **Lotus subbiflorus* with **Callitriche stagnalis* in open water
- 3 - Woodland *Melaleuca preissiana* and *M. raphiophylla* over tall sparse shrubland *Astartea scoparia* over sedgeland *Juncus pallidus* over hermland of **Cotula coronopifolia*, **Lotus subbiflorus* and *Isolepis cernua* var. *sertiformis*
- 5 - Tall shrubland *Kunzea micrantha* subsp. *micrantha* and *Melaleuca viminea* over weeds
- 6 - Woodland *Banksia attenuata*, *Eucalyptus marginata*, +/- *Agonis flexuosa* over occasional tall open shrubland *Kunzea glabrescens* over weedy closed herb/grassland
- 7 - Low open forest of *Melaleuca preissiana* and *Melaleuca raphiophylla* over sedgeland
- 8 - Low open forest of *Eucalyptus rudis* and *Melaleuca preissiana* over sedgeland
- 9a - *Corymbia calophylla* and *Eucalyptus marginata* +/- *Agonis flexuosa* with very occasional *E. gomphocephala*
- 9b - *Melaleuca raphiophylla*
- 9c - *Agonis flexuosa* stands
- 9d - *Eucalyptus rudis* and *Corymbia calophylla* +/- *M. raphiophylla*



Map Projection: Transverse Mercator
Horizontal Datum: GDA 1994
Grid: GDA 1994 Perth Coastal Grid 1994



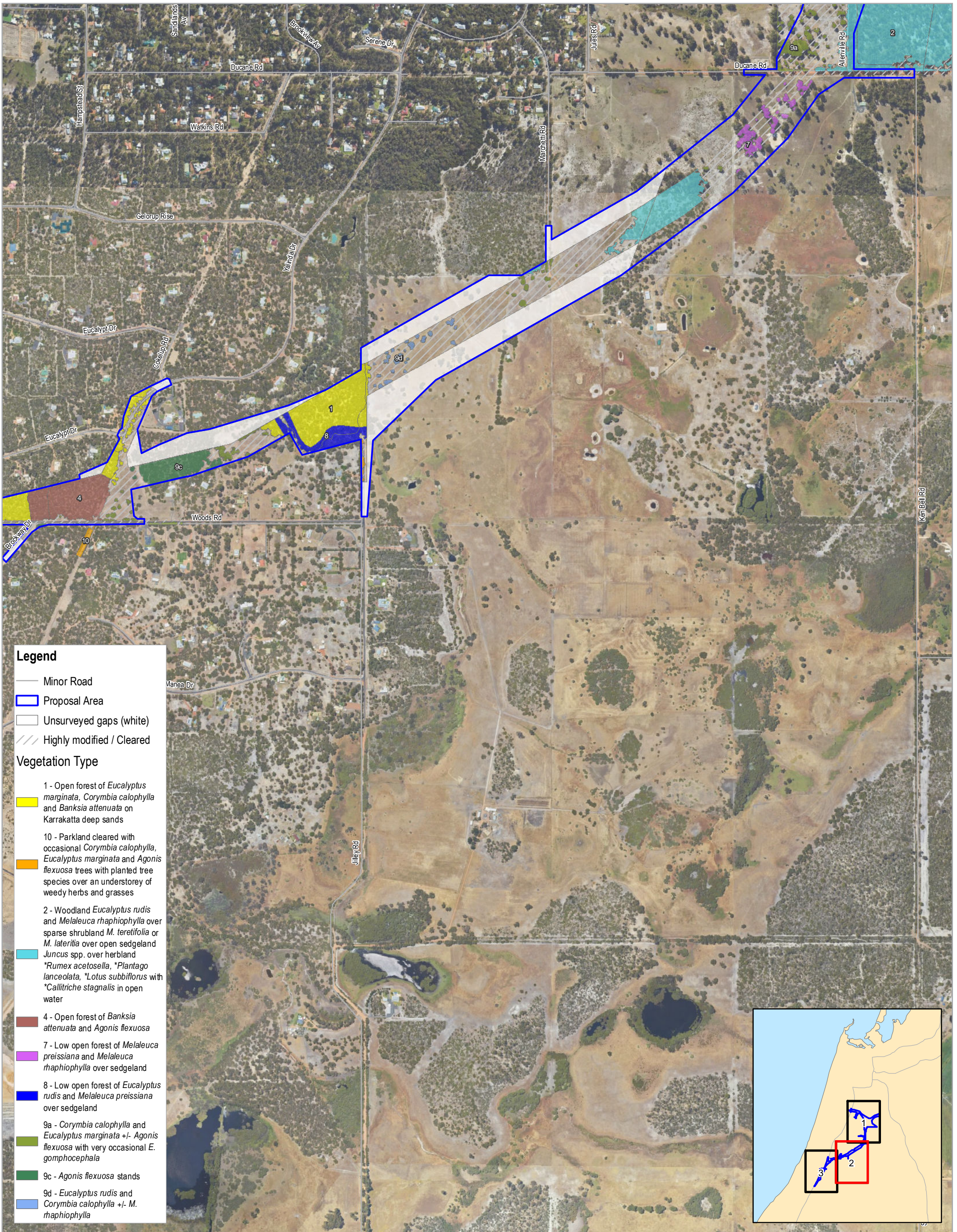
Main Roads Western Australia
Bunbury Outer Ring Road
Southern Section
EPBC Referral

Project No. 61-37041
Revision No. 1
Date 17/09/2019

Vegetation Types

FIGURE 8

© 613704119_0_GISMaps\Workin\BORR South EPBC Referral\6137041_008_VegetationType_Rev1.mxd
Print date: 17 Sep 2019 - 12:21
Data source: BORR: Vegetation types - 201902, Referral corridor - 201907, MRWA: Road Network - 20180519, Landgate: Imagery accessed on 20190709, Geoscience Australia: Geodata Topo 250k. Created by: mmkmon

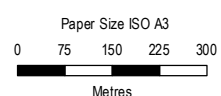


Legend

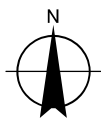
- Minor Road
- ▭ Proposal Area
- ▭ Unsurveyed gaps (white)
- ▨ Highly modified / Cleared

Vegetation Type

- 1 - Open forest of *Eucalyptus marginata*, *Corymbia calophylla* and *Banksia attenuata* on Karrakatta deep sands
- 10 - Parkland cleared with occasional *Corymbia calophylla*, *Eucalyptus marginata* and *Agonis flexuosa* trees with planted tree species over an understorey of weedy herbs and grasses
- 2 - Woodland *Eucalyptus rudis* and *Melaleuca raphiophylla* over sparse shrubland *M. teretifolia* or *M. lateritia* over open sedgeland *Juncus* spp. over herbland **Rumex acetosella*, **Plantago lanceolata*, **Lotus subbiflorus* with **Callitriche stagnalis* in open water
- 4 - Open forest of *Banksia attenuata* and *Agonis flexuosa*
- 7 - Low open forest of *Melaleuca preissiana* and *Melaleuca raphiophylla* over sedgeland
- 8 - Low open forest of *Eucalyptus rudis* and *Melaleuca preissiana* over sedgeland
- 9a - *Corymbia calophylla* and *Eucalyptus marginata* +/- *Agonis flexuosa* with very occasional *E. gomphocephala*
- 9c - *Agonis flexuosa* stands
- 9d - *Eucalyptus rudis* and *Corymbia calophylla* +/- *M. raphiophylla*

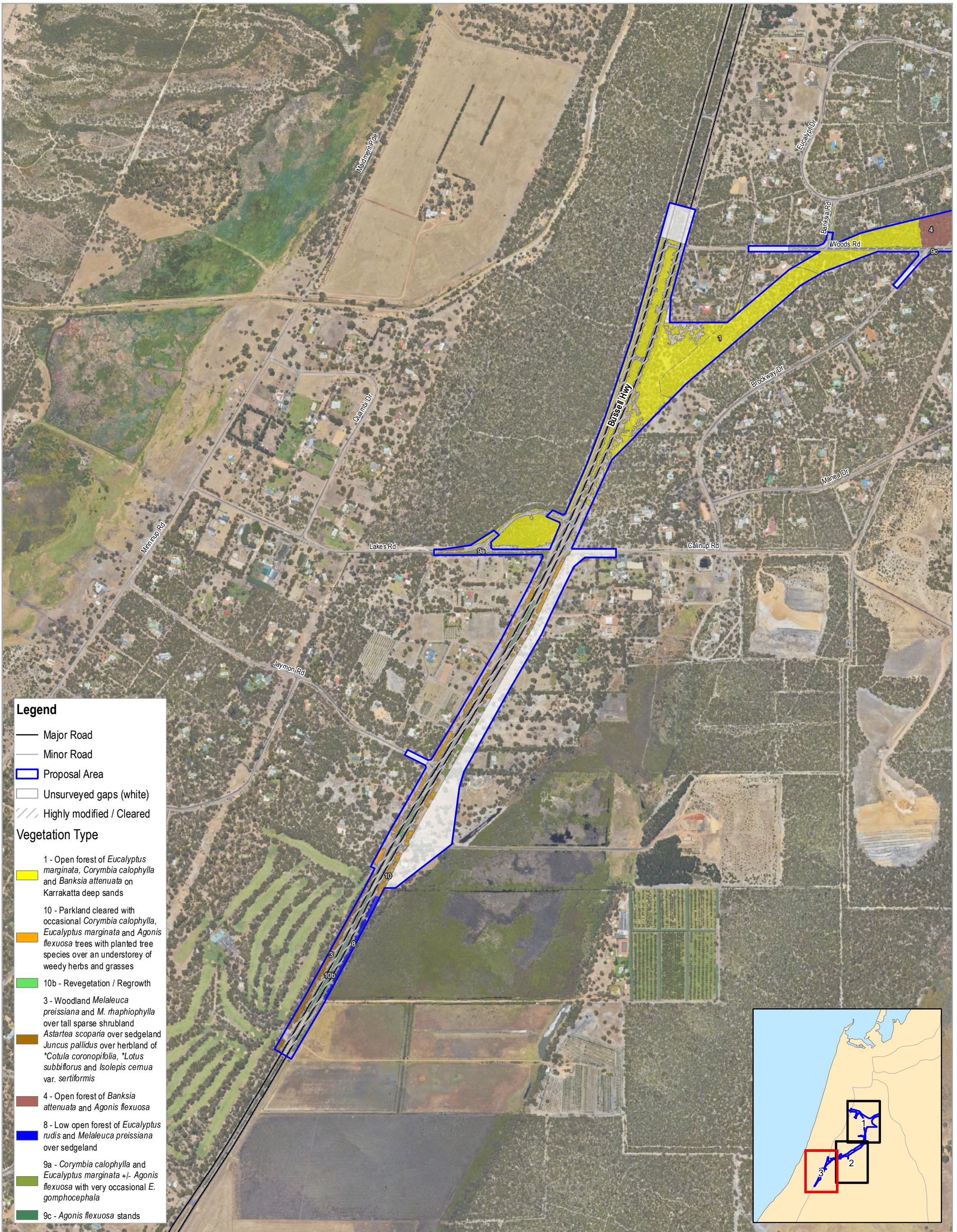


Map Projection: Transverse Mercator
Horizontal Datum: GDA 1994
Grid: GDA 1994 Perth Coastal Grid 1994



Main Roads Western Australia
Sunbury Outer Ring Road
Southern Section
EPBC Referral

Project No. 61-37041
Revision No. 1
Date 17/09/2019

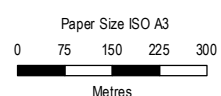


Legend

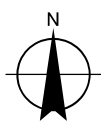
- Major Road
- Minor Road
- ▭ Proposal Area
- ▭ Unserved gaps (white)
- ▨ Highly modified / Cleared

Vegetation Type

- 1 - Open forest of *Eucalyptus marginata*, *Corymbia calophylla* and *Banksia attenuata* on Karrakatta deep sands
- 10 - Parkland cleared with occasional *Corymbia calophylla*, *Eucalyptus marginata* and *Agonis flexuosa* trees with planted tree species over an understorey of weedy herbs and grasses
- 10b - Revegetation / Regrowth
- 3 - Woodland *Melaleuca preissiana* and *M. raphiophylla* over tall sparse shrubland
- 8 - Low open forest of *Eucalyptus rudis* and *Melaleuca preissiana* over sedgeland
- 9a - *Corymbia calophylla* and *Eucalyptus marginata* +/- *Agonis flexuosa* with very occasional *E. gomphocephala*
- 9c - *Agonis flexuosa* stands
- 4 - Open forest of *Banksia attenuata* and *Agonis flexuosa*



Map Projection: Transverse Mercator
Horizontal Datum: GDA 1994
Grid: GDA 1994 Perth Coastal Grid 1994



Main Roads Western Australia
Bunbury Outer Ring Road
Southern Section
EPBC Referral

Project No. 61-37041
Revision No. 1
Date 17/09/2019

Vegetation Types

FIGURE 8