

APPENDIX A FIGURES (Figure 6)

Figure 1 Proposal Area

Figure 2 Current Proposal Area and 2012 EP Act Referral Proposal Area

Figure 3 Vegetation Condition and Weeds

Figure 4 Surveyed and Unsurveyed Areas

Figure 5 Threatened Ecological Communities (Banksia Woodland TEC)

Figure 6 Black Cockatoo Habitat and Observations

Figure 7 Western Ringtail Possum Habitat and Observations

Figure 8 Vegetation Types

Legend

Trees with Hollows Potentially Suitable - Baudin's Cockatoo & Carnaby's Cockatoo (Endangered, Schedule 2), and Forest Red-tailed Black Cockatoo (Vulnerable, Schedule 3)

- Suitable with evidence of use
- Suitable with no evidence of use
- Limited suitability
- Ground assessed (potentially suitable)

Black Cockatoo observation

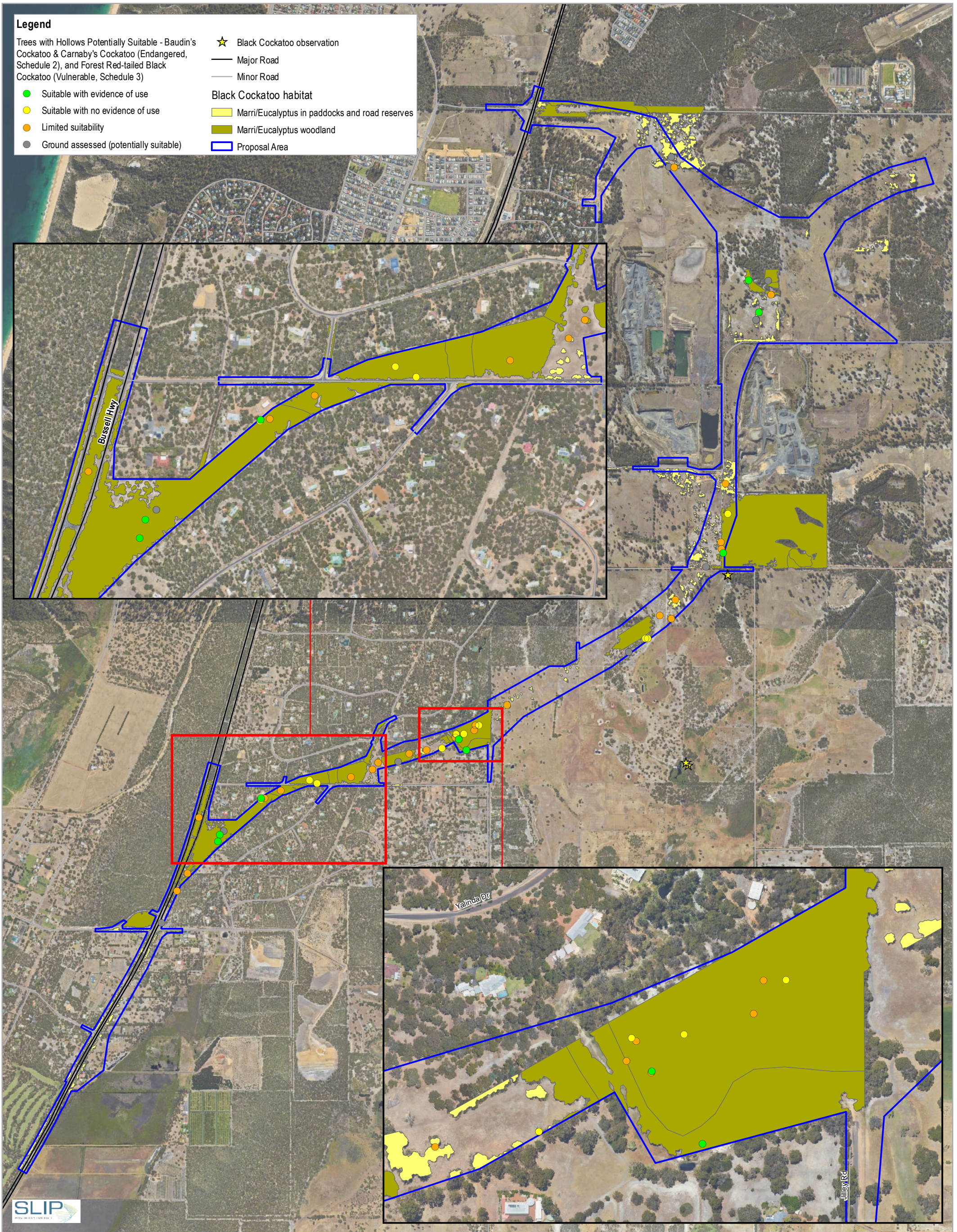
- ★ Black Cockatoo observation

Major Road

Minor Road

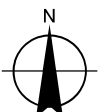
Black Cockatoo habitat

- Marri/Eucalyptus in paddocks and road reserves
- Marri/Eucalyptus woodland
- Proposal Area



Paper Size ISO A3
 0 180 360 540 720
 Metres

Map Projection: Transverse Mercator
 Horizontal Datum: GDA 1994
 Grid: GDA 1994 Perth Coastal Grid 1994



BORR Team
 BUILDING OUR FUTURE

Australian Government

mainroads
 WESTERN AUSTRALIA

BUNBURY OUTER RING ROAD | PLANNING AND DEVELOPMENT

Main Roads Western Australia
 Bunbury Outer Ring Road
 Southern Section
 EPBC Referral

Project No. 61-37041
 Revision No. 1
 Date 17/09/2019

Black Cockatoo Habitat and Observations

FIGURE 6

G:\6137041\119_0_GIS\Maps\Working\BORR South EPBC Referral\6137041_006_BCs_Rev1.mxd
 Print date: 17 Sep 2019 - 10:57

Data source: BORR Referral corridor - 201907; Biota Environmental: Black cockatoo data - 2019; MRWA: Road Network - 20180519; Landgate: Imagery accessed on 20190711. Created by: m.mikkonen