

## APPENDIX A FIGURES (Figure 5)

---

**Figure 1 Proposal Area**

**Figure 2 Current Proposal Area and 2012 EP Act Referral Proposal Area**

**Figure 3 Vegetation Condition and Weeds**

**Figure 4 Surveyed and Unsurveyed Areas**

**Figure 5 Threatened Ecological Communities (Banksia Woodland TEC)**

**Figure 6 Black Cockatoo Habitat and Observations**

**Figure 7 Western Ringtail Possum Habitat and Observations**

**Figure 8 Vegetation Types**

---



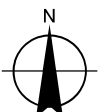
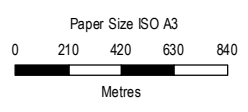
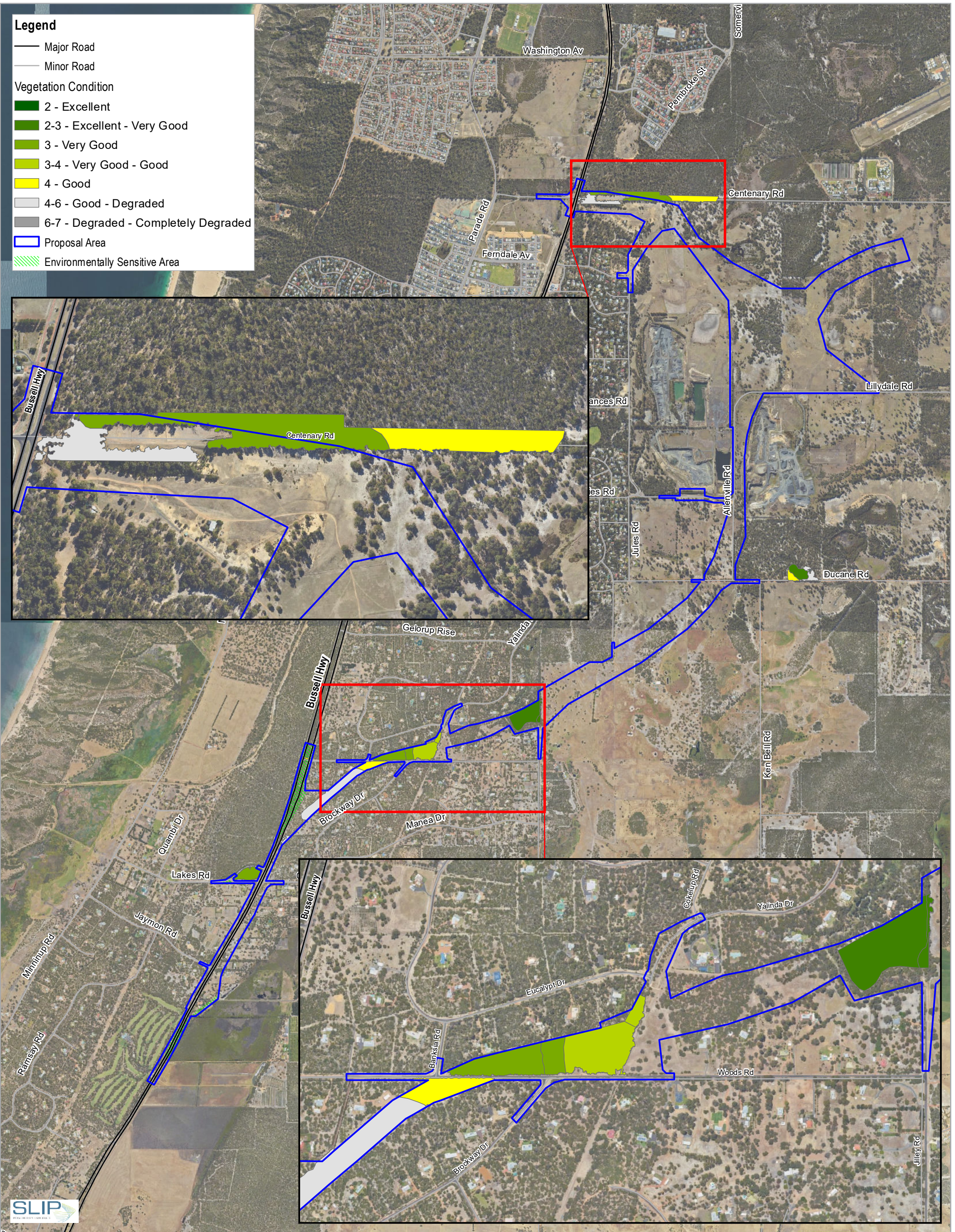
**Legend**

- Major Road
- Minor Road

**Vegetation Condition**

- 2 - Excellent
- 2-3 - Excellent - Very Good
- 3 - Very Good
- 3-4 - Very Good - Good
- 4 - Good
- 4-6 - Good - Degraded
- 6-7 - Degraded - Completely Degraded

- Proposal Area
- Environmentally Sensitive Area



Map Projection: Transverse Mercator  
Horizontal Datum: GDA 1994  
Grid: GDA 1994 Perth Coastal Grid 1994

**BORR Team**  
BUILDING OUR FUTURE

**mainroads**  
WESTERN AUSTRALIA  
SUNBURY OUTER RING ROAD | PLANNING AND DEVELOPMENT

Main Roads Western Australia  
Bunbury Outer Ring Road  
Southern Section  
EPBC Referral

**Threatened Ecological Communities  
(Banksia Woodland TEC)**

Project No. 61-37041  
Revision No. 0  
Date 17/09/2019

**FIGURE 5**

© 16137041119\_0\_GIS\Maps\Working\BORR\_South\_EPBC Referral\6137041\_005\_TECPEC\_Rev0.mxd  
Print date: 17 Sep 2019 - 11:37

Data source: BORR: Referral corridor - 201907; TEC and PEC boundaries - 201902; MRWA: Road Network - 20180519; Landgate: Imagery accessed on 20190711. Created by: m.mikkonen