

A blurred truck is driving from left to right under a concrete bridge. The truck is white with blue and red accents. The bridge has several large concrete pillars. A dark blue rectangular overlay is on the right side of the image, containing white text.

Gelorup Road Connection Update

Chris Mitchell

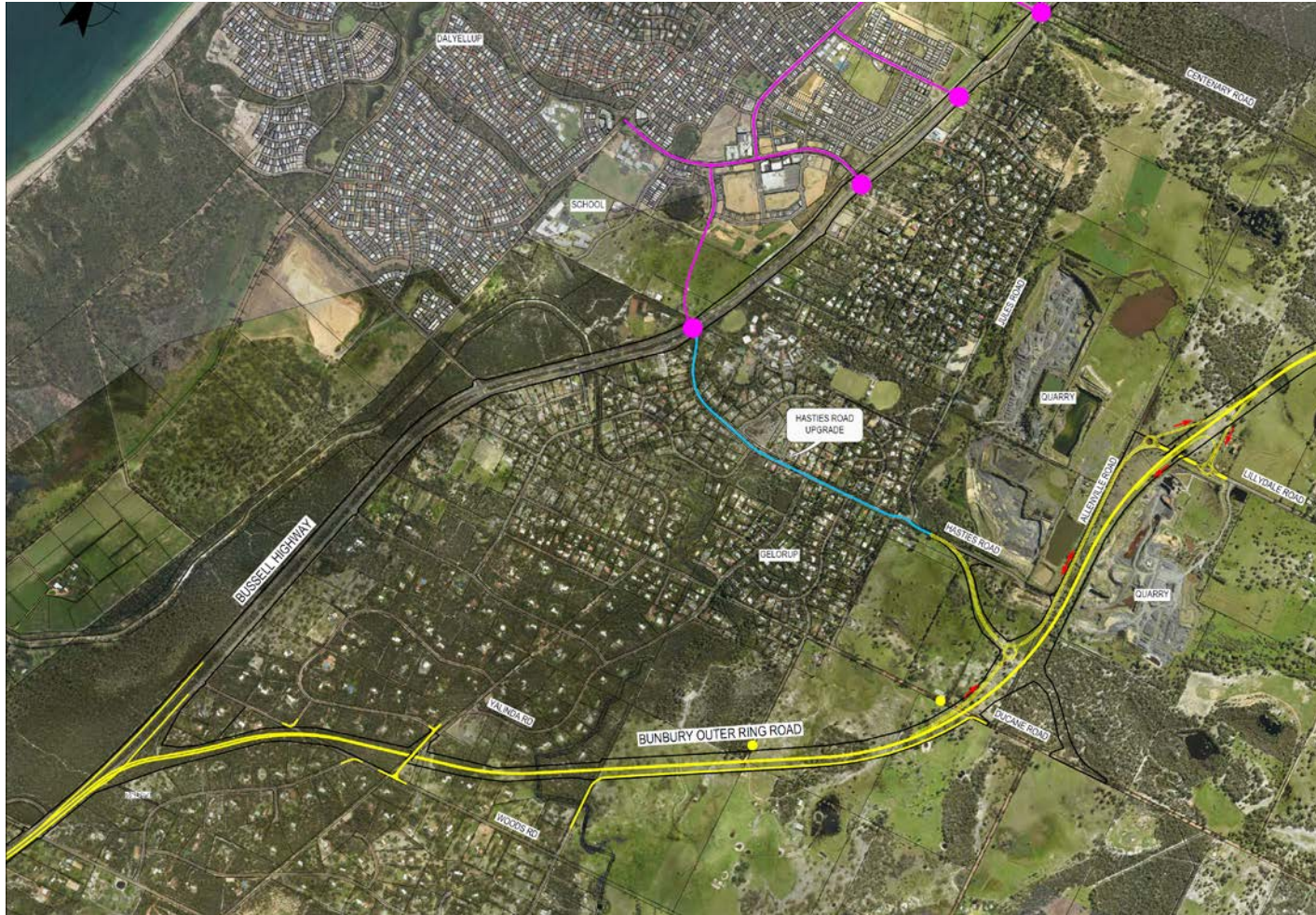
Gelorup Connectivity Background

- Hasties Rd/ Ducane Rd interchange is currently allowed for in the GBRS.
- The South West Freeway planning study in 2017 considered the removal of the Hasties Road connection, while proposing a full movement interchange at Bussell Highway (shown as Option 2 in this presentation).
- Review of this work combined with community concerns, prompted the need to investigate other options - Centenary Road and a Y-interchange at Bussell Hwy.
- The Hasties connectivity on the east side of BORR has since been modified to connect to Lillydale Rd rather than Ducane Rd as previously planned.

Community Feedback Themes

- Concerned about increased traffic on Hasties Road and interface with existing community facilities along this road.
- Concerned about increased traffic and the interaction with school traffic.
- Concerns about road reserve width along Hasties Road (narrowest part 20m near Bussell Highway).
- Concerned about quarry traffic on Jules Road if Centenary Road gets connected.

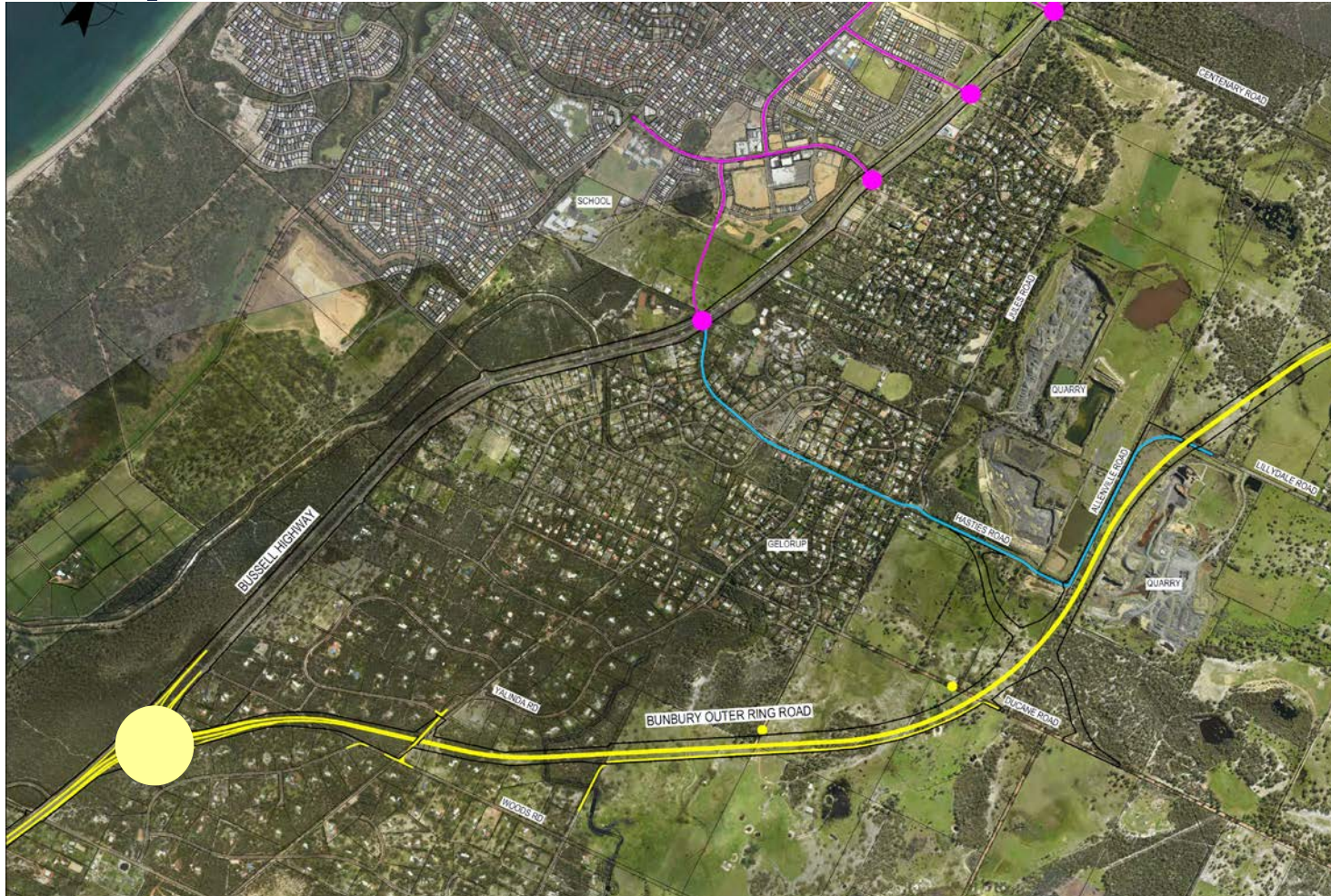
Options Considered



Option 1:

- Hasties Road connector, with full movement interchange at Lillydale Rd &
- Y-Interchange at BORR/ Bussell

Options Considered



Option 2:

- Full movement interchange at BORR/ Bussell
- BORR grade separated over Lillydale Rd

Options Considered



Option 3:

- Centenary Road connector, with full movement interchange at Lillydale Rd
- Y-Interchange at BORR/ Bussell

Options Considered



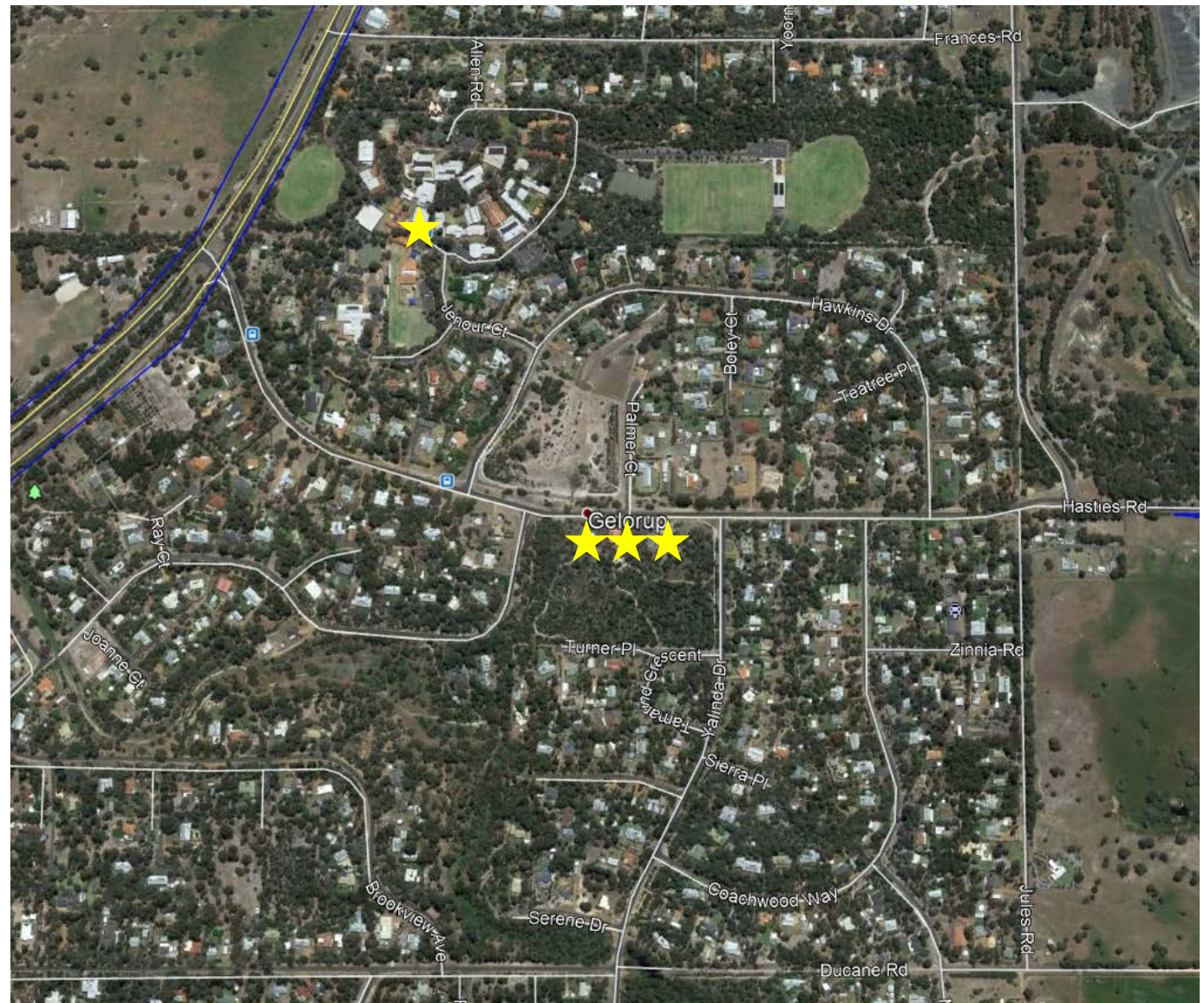
Option 4:

- Y-Interchange at BORR/ Bussell
- BORR grade separated over Lillydale Rd

Constraints

Gelorup Amenities:

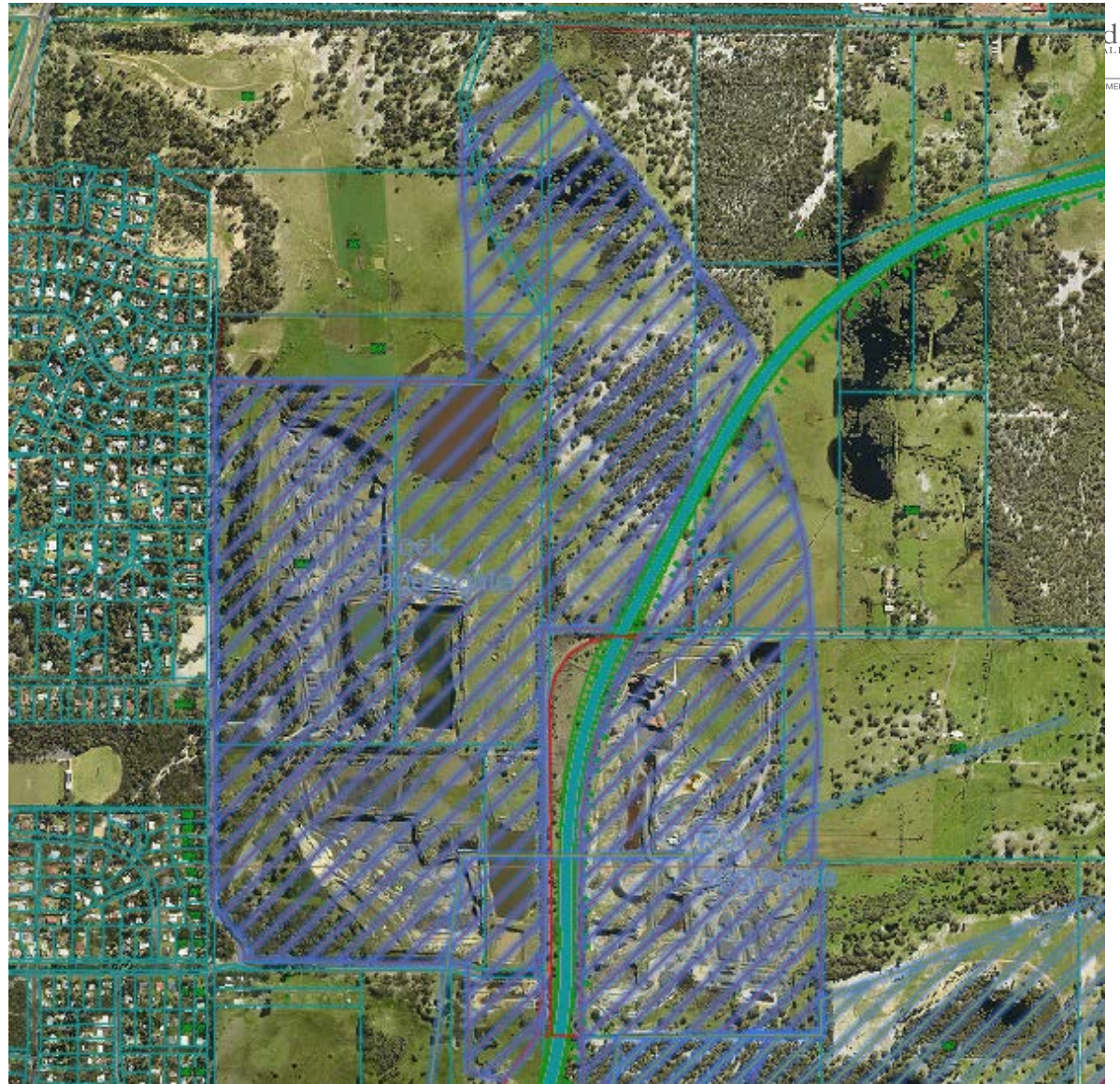
- Volunteer FES Station
- Community Hall
- Skate Park
- Cathedral Grammar School
(off *Hawkins Drive*)
- Approx. 40 driveways along
Hasties Rd
- 3 bus stops



Constraints

Resource Impacts:

- Basalt extents shown



Constraints

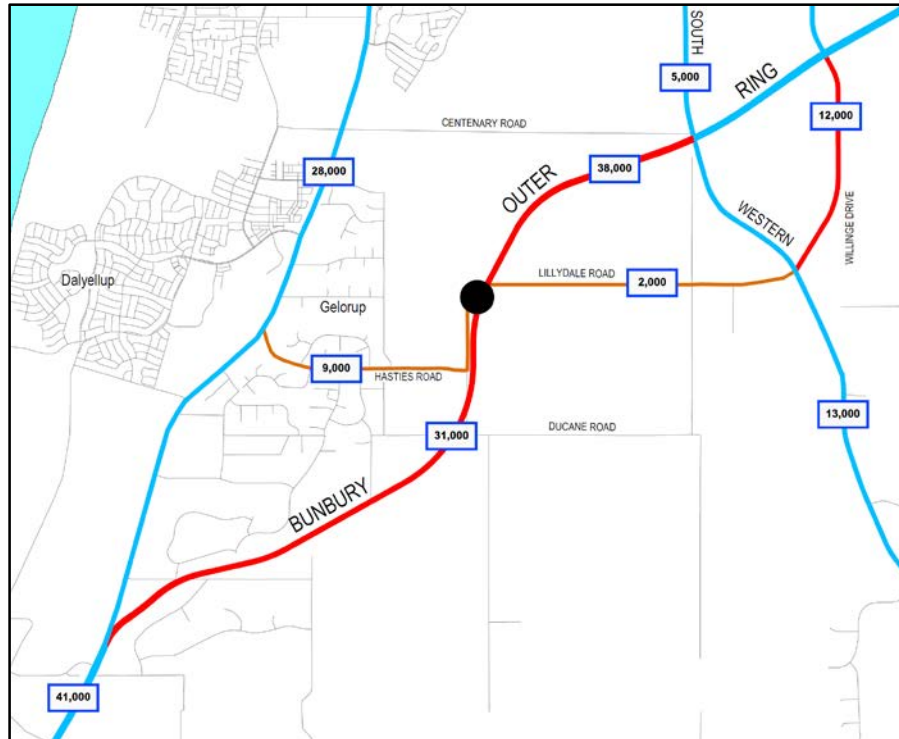
– Quarry Access

- Holcim Quarry Access (Jules)
- Hanson Quarry Access (Lillydale and Allenville)

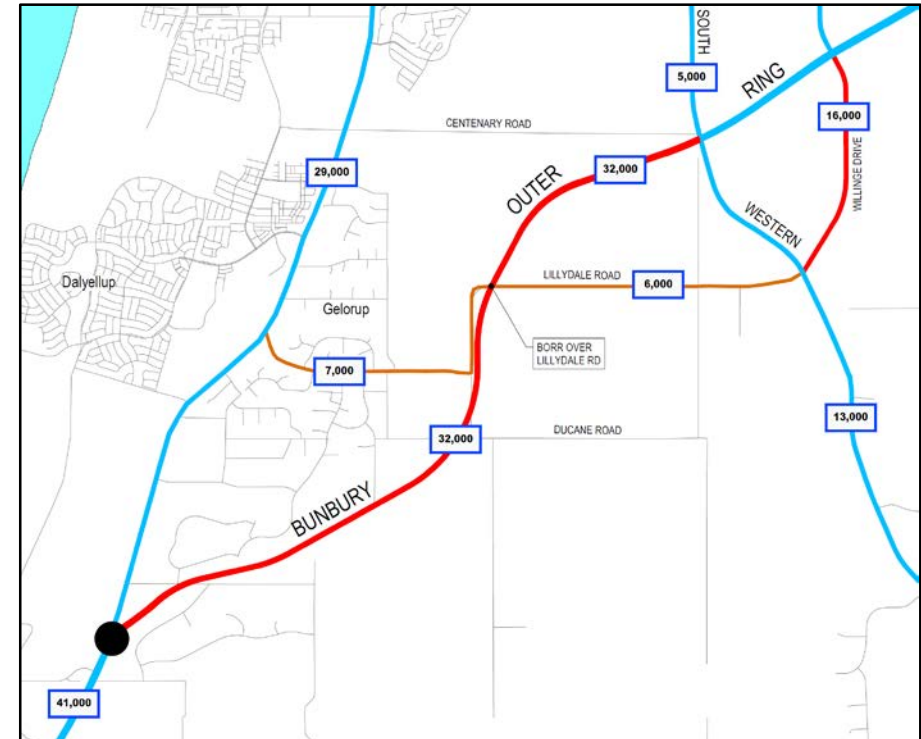


Future Traffic (200k population)

Option 1 – Hasties Connection
(note: Jules Rd 1500 vdp)



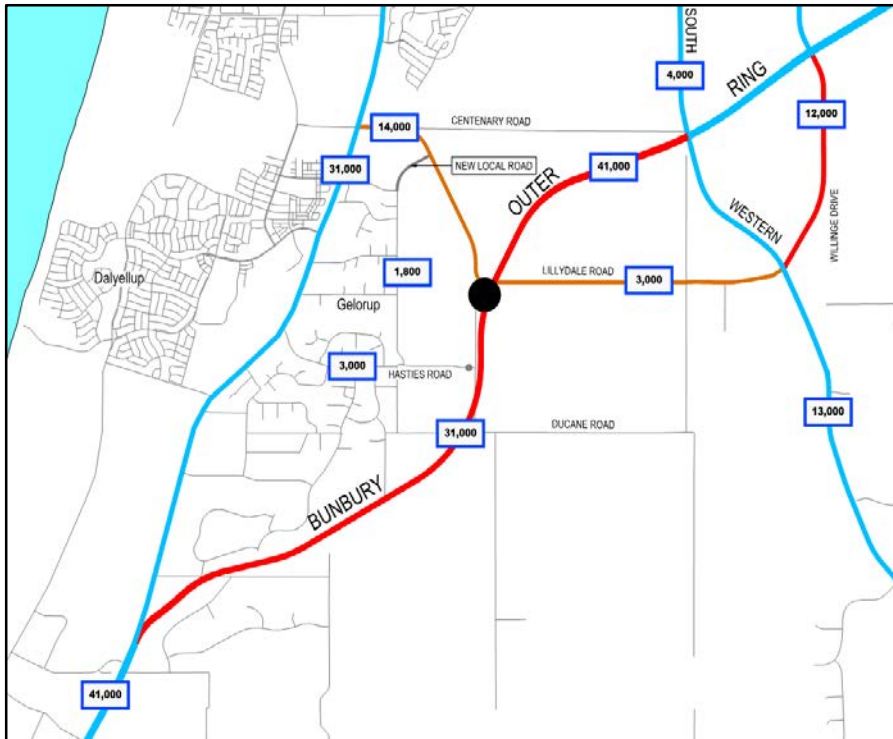
Option 2 – Full intersection at Bussell Hwy
(note: Jules Rd 1000 vdp)



Future Traffic (200k population)

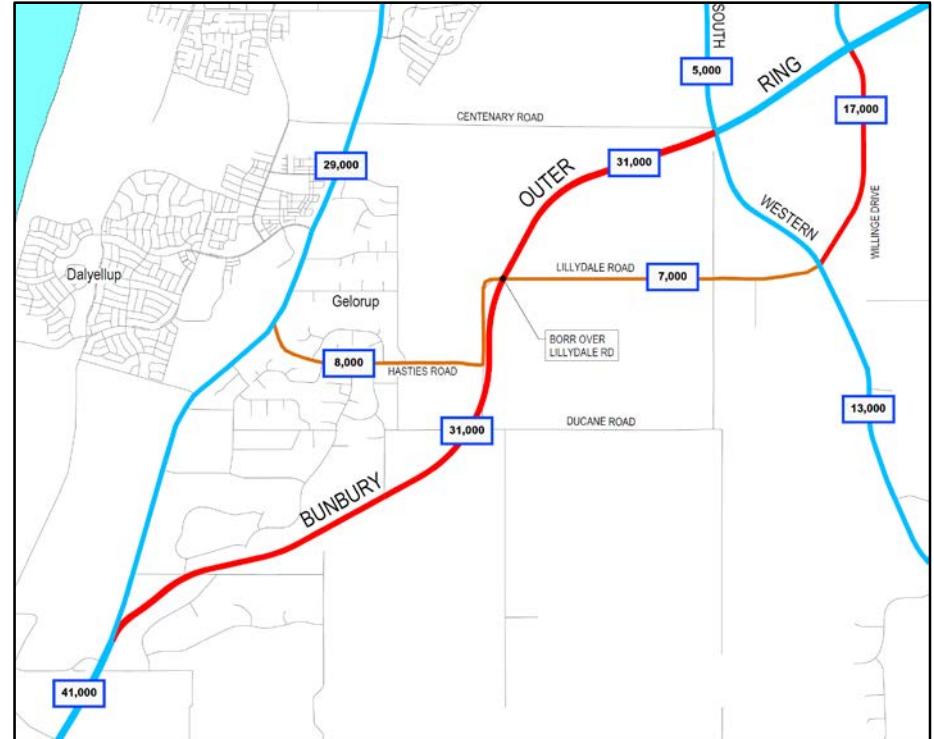
Option 3 – Centenary Connection

(note: Jules Rd 1800 vpd)



Option 4 – Y at Bussell Hwy

(note: Jules Rd 1100 vpd)



Advantages and Disadvantages

Option 1 – Hasties Road Connection

Advantages

- Offers good level of connectivity between regional and sub-regional road networks
- Originally planned connection identified in the GBRs
- No residential dwellings require to be demolished
- Reduction in heavy vehicles (due to quarry trucks having direct access to BORR)

Disadvantages

- Higher traffic volume along Hasties Road compared to other options
- Hasties Road intersection with Bussell Highway will require an upgrade – land take may be required
- Interface with driveways and local roads will require resolution
- Some sterilisation of resource at the interchange (outside the GBRs)

Advantages and Disadvantages

Option 2 – Full connection at Bussell Highway

Advantages

- Appropriate connectivity which facilitates segregation of local and regional/ sub-regional traffic
- Lessens impact to Gelorup community and amenities over Options 1 and 4
- No further sterilization of resources outside the GBRS

Disadvantages

- Relatively low numbers of traffic using EW and WE connectivity at the interchange
- Higher traffic on Hasties Road than Option 3
- Quarry trucks will still use Hasties Road
- Directly impacts two properties requiring land acquisition
- Impacts good quality vegetation outside the GBRS

Advantages and Disadvantages

Option 3 – Centenary Connection

Advantages

- No increase in traffic along Hasties Rd (maintains present day volumes)
- Offers good level of connectivity between regional and sub-regional road networks
- Broadens capture zone (south Bunbury) to access BORR
- Segregates local traffic from regional traffic
- No residential dwellings require demolition
- Provides quarry access to BORR (thus reducing the reliance on Hasties Road)

Disadvantages

- Greatest impact on Basalt sterilisation
- Clearing of good quality vegetation near Bussell Hwy
- Will require amendment to the GBRS / Community unaware of this connection until recent consultation
- Increase in traffic on Jules Rd in comparison to other options (1800vpd compared with 1000vpd for full, 1500vpd for Hasties, and 1100vpd Y-interchange).
- Impact on land zoned for residential north of Gelorup

Advantages and Disadvantages

Option 4 – Y interchange at Bussell Highway

Advantages

- This option can be fully contained within the GBRS
- No additional sterilisation of resource outside GBRS
- No residential properties impacts

Disadvantages

- Poor connectivity between regional and sub-regional road networks
- May be perceived as insufficient access to BORR by the community
- The main east/ west connectivity from Bussell to SWH will continue to be on Hasties Rd, therefore Hasties may experience an increase in traffic