



Australian Government



mainroads
WESTERN AUSTRALIA

BUNBURY OUTER RING ROAD | PLANNING AND DEVELOPMENT

BUILDING OUR FUTURE

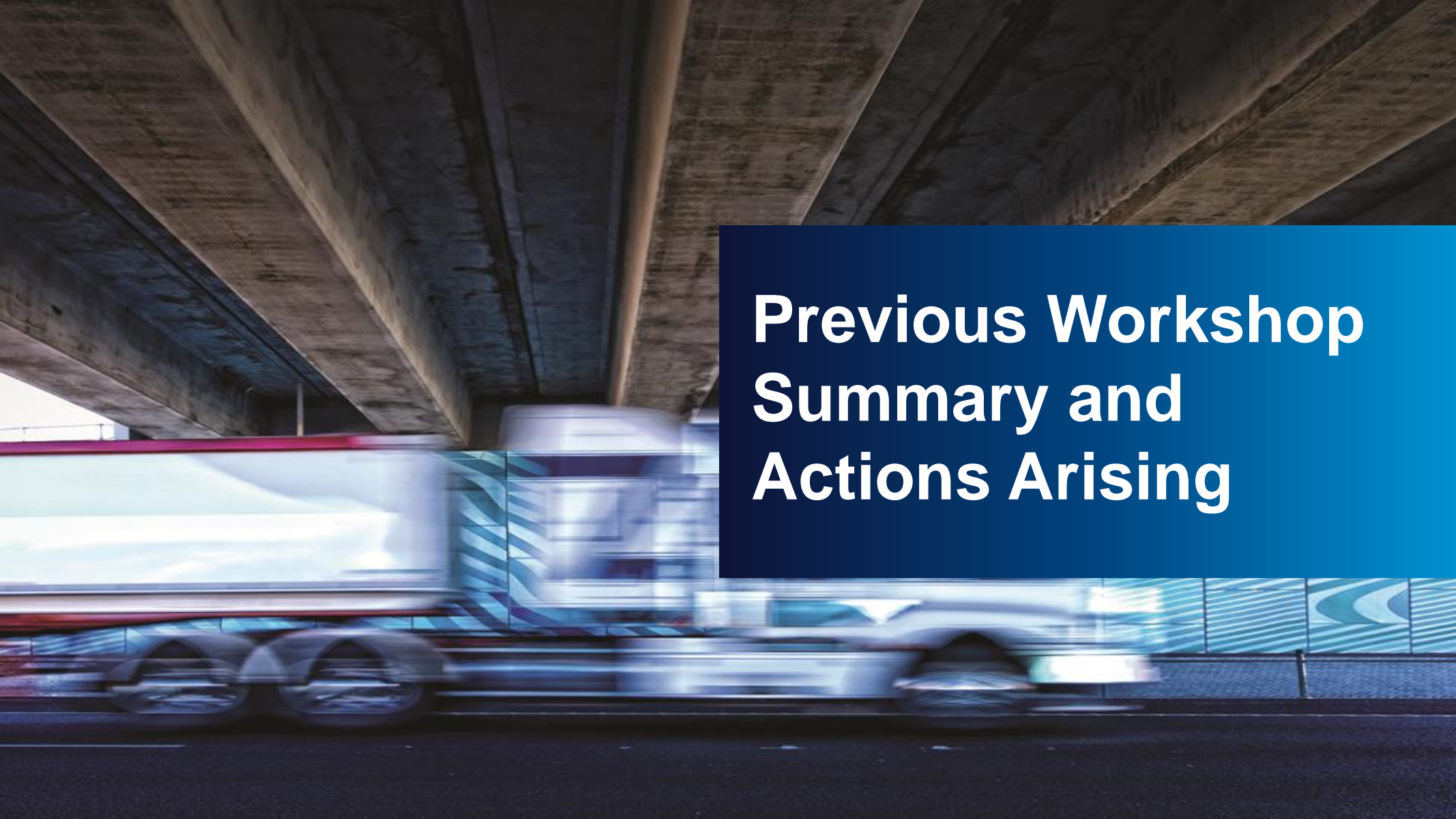
Bunbury Outer Ring Road Southern Community Reference Group

4 December 2018



Agenda

5:15	Arrival – light refreshments available from 5:15pm	
5.30	Welcome – meeting purpose and process	Linton Pike
	Previous Workshop Summary and actions arising	Linton Pike
	Environmental Assessment Process	Fionnuala Hannon
	Environmental Impacts (noise and air quality)	Fionnuala Hannon
	Willinge Drive Extension	Chris Mitchell
	BORR North/Central Environmental Referral Boundary	Padraic Murphy
	CRG member comment	CRG members
8.30	Next steps and close	Linton Pike



Previous Workshop Summary and Actions Arising



Environmental Assessment Process

Fionnuala Hannon

Public consultation during the approvals process

- The s38 referral of the Project is advertised for 7 days for public comment regarding the level of assessment
- Where documents are prepared for the EPA, these are made available for public comment for a time period ranging between 8-12 weeks.
- EPA Report and proposed ministerial conditions are advertised for public comment for 28 days.
- Appeals to the EPA's assessment may be made during this 28 day period.
- The Appeals convenor will meet with the appellants during the appeal process.

BORR South. Referred 2012

- <https://consultation.epa.wa.gov.au/seven-day-comment-on-referrals/a574011/>
- https://consultation.epa.wa.gov.au/seven-day-comment-on-referrals/a574011/supporting_documents/Referral%20Form.pdf
- The GBRS corridor was referred by Main Roads in 2012.
- There were no public comments on the referral
- The EPA determined the proposal would not be assessed and provided public advice.
- This determination cannot be appealed.
- The Project cannot be re-referred unless there is a significant change to the Project.

Environmental values

Environmental value	Progress
<p>Fauna</p> <ul style="list-style-type: none"> - WRP's observed in some patches of native vegetation - Evidence of black cockatoo activity, mostly foraging 	<p>Field investigations are complete. Data interpretation and reporting is in progress.</p>
<p>Aquatic fauna</p> <ul style="list-style-type: none"> - Black striped minnow (Endangered) - Carters fresh water mussel (Vulnerable) - Western Mud minnow (Vulnerable) 	<p>Field work complete. Reporting in progress</p>
<p>Wetland assessment</p> <ul style="list-style-type: none"> - Conservation Category wetlands - Non-classified wetlands 	<p>Field work complete. Reporting in progress</p>
<p>Flora and vegetation</p> <ul style="list-style-type: none"> - Banksia woodland TEC - Priority species 	<p>Taxonomy is complete Reporting is in progress</p>

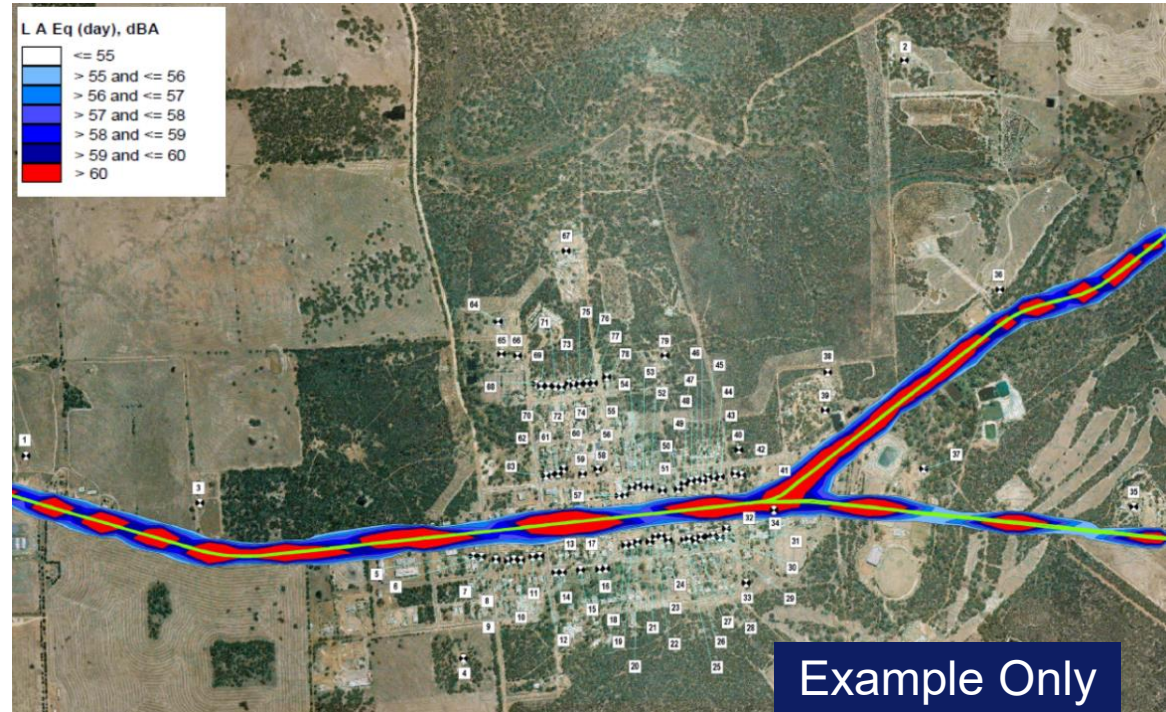


Environmental Impacts

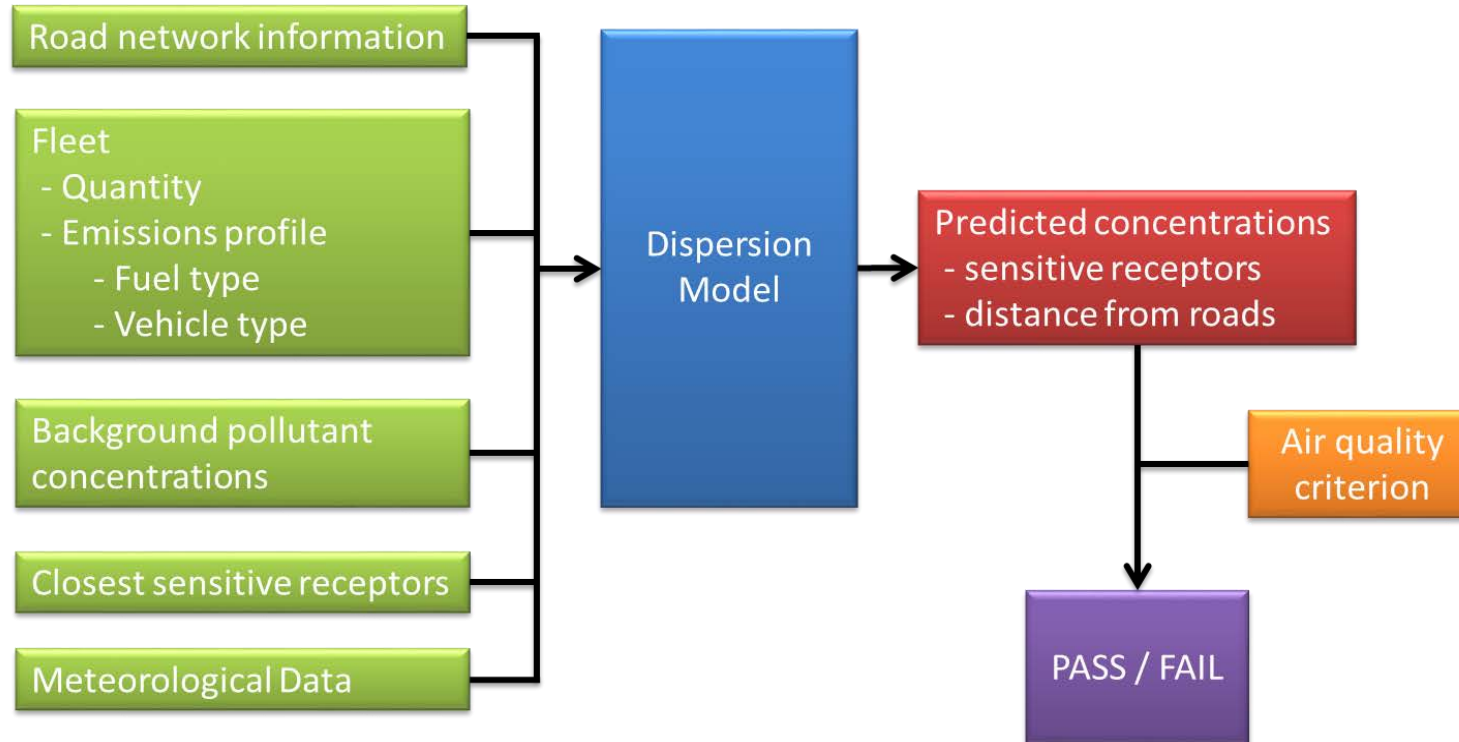
Fionnuala Hannon

What Goes Into a Noise Model

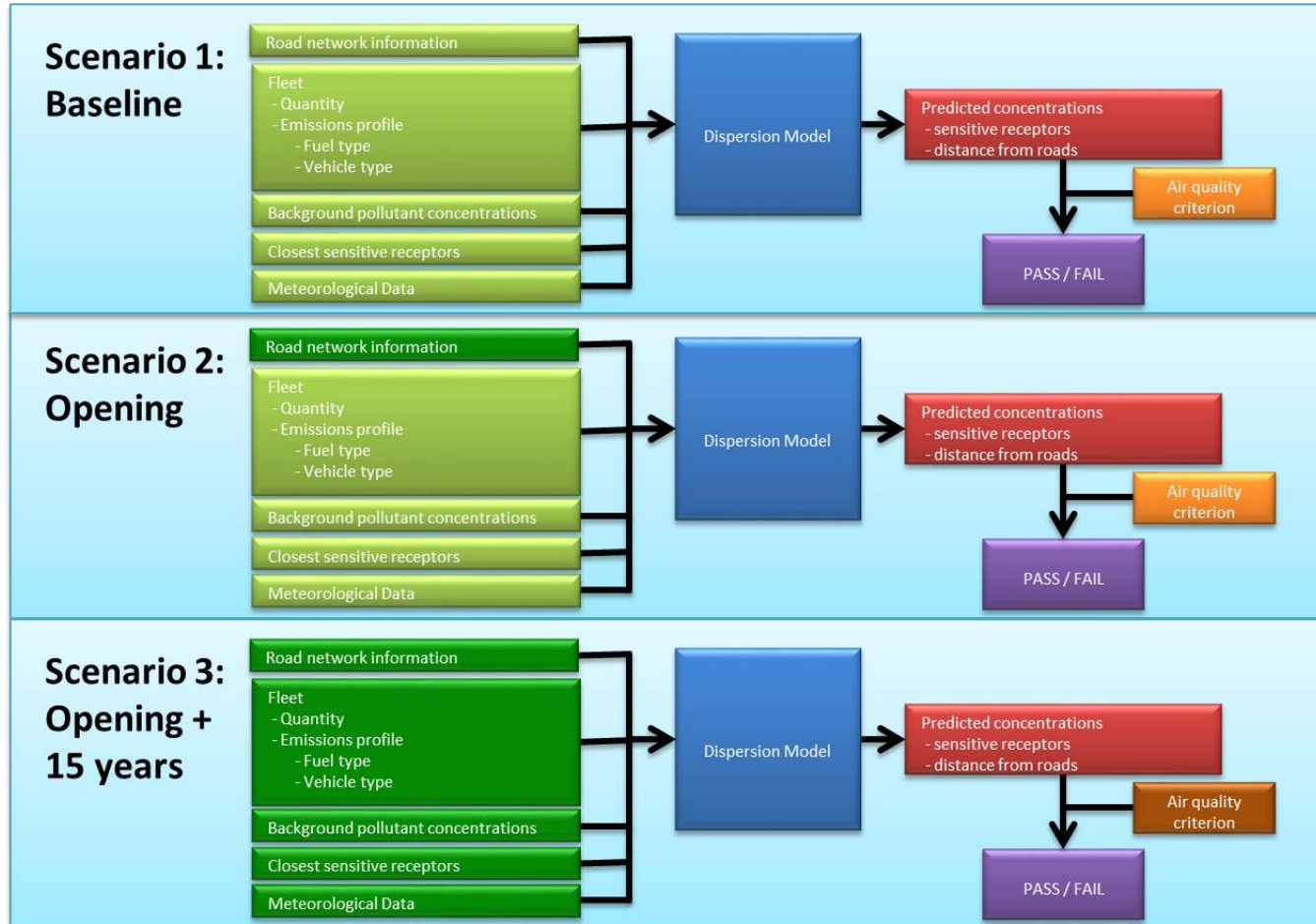
- House Ground Levels
- Property Fences (where solid)
- Designed Road Ground Levels
- Vehicle Heights
- Future Traffic Volumes
- Heavy Vehicle Numbers
- Road Surface Types
- Road Gradients



What goes into an Air Quality Model



What goes into an Air Quality Model



Air Modelling Outputs

Predicted Concentrations are assessed against NEPM Air Quality and Air Toxic standards



QUESTIONS AND ANSWERS

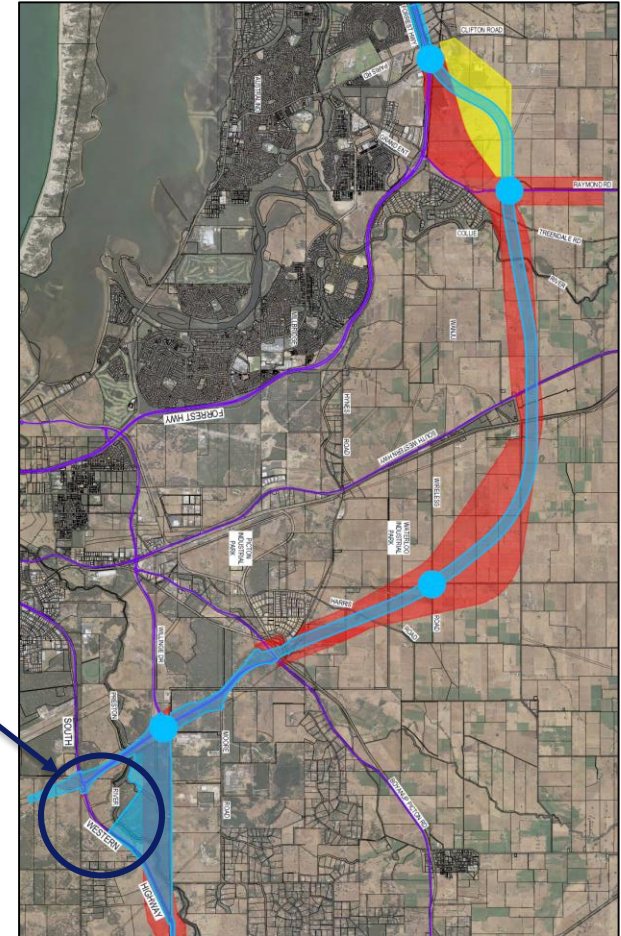
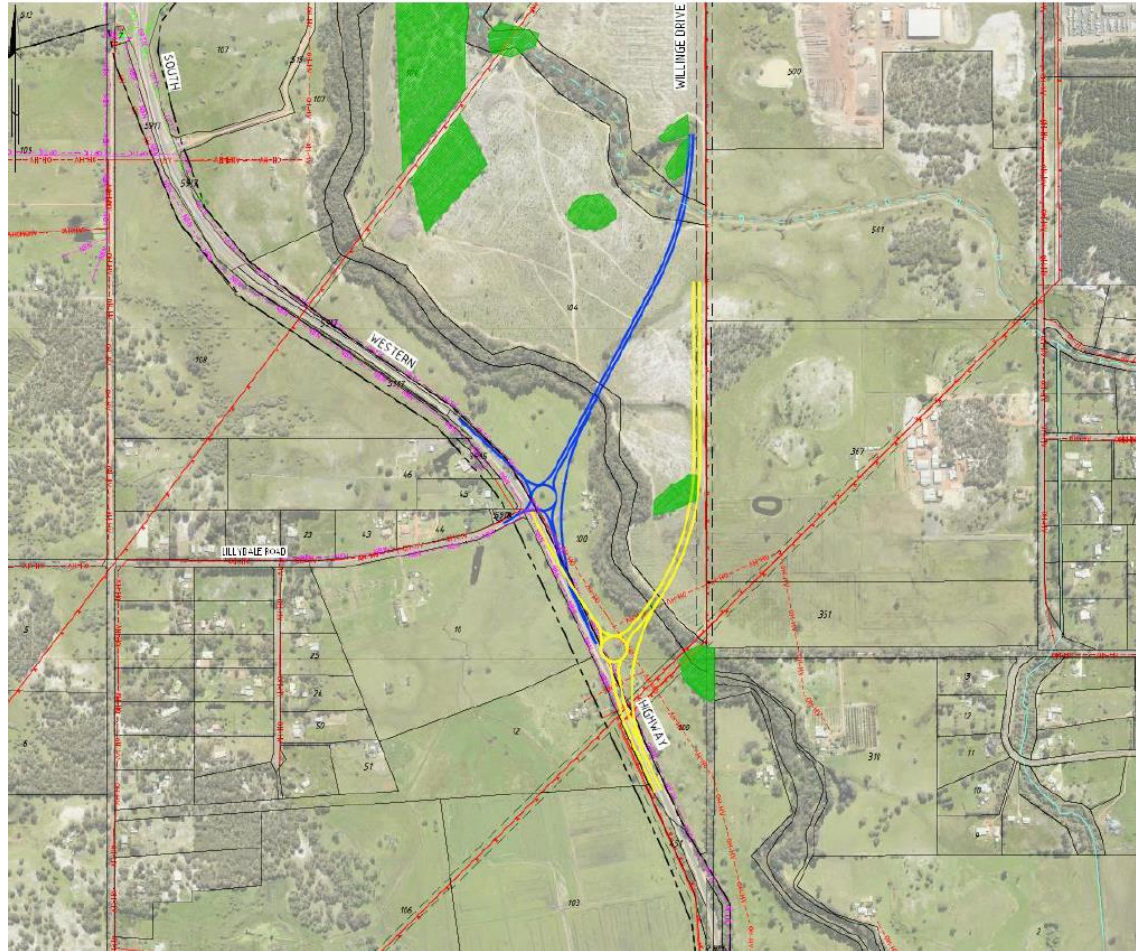


Willinge Drive Extension Alignment

Chris Mitchell

Planning and Development Manager

Willinge Drive Extension



Willinge Extension Recommended Option



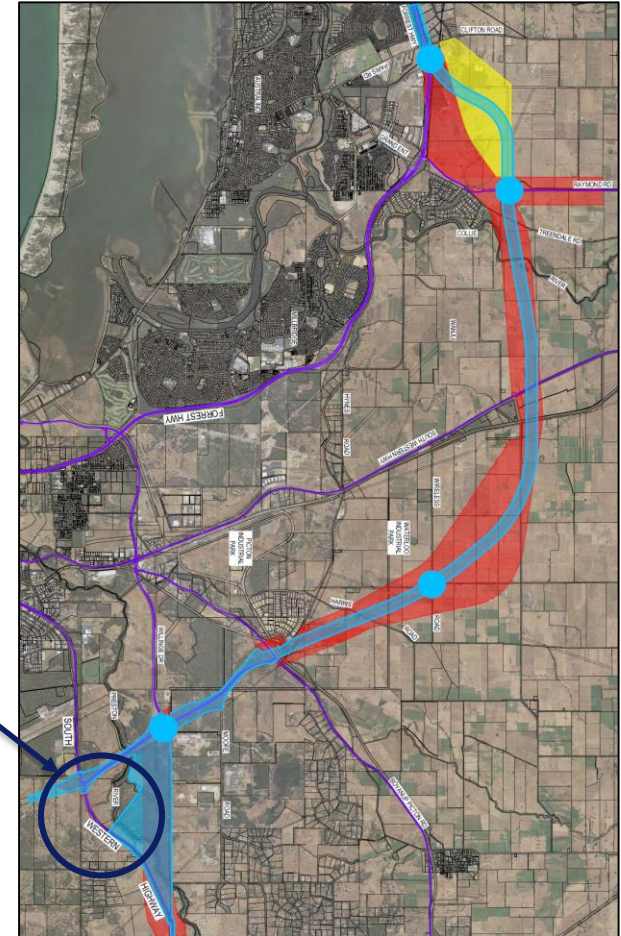
Australian Government

BUILDING OUR FUTURE



mainroads
WESTERN AUSTRALIA

BUNBURY OUTER RING ROAD | PLANNING AND DEVELOPMENT





**BORR North/Central
Environmental Referral Boundary**

Padraic Murphy

Service Delivery Manager

Approvals

How this is managed?

- Refined the 500m+ corridor to 200m for environmental surveys
- Identified the local roads and access modifications required
- Allowance for accommodation works on private properties, eg farm access tracks, channel diversions
- Environmental referral of 200m corridor plus local road upgrades
- Consultation with individual landowners regarding individual impacts
- Refinement of land acquisition boundary based on consultation

Forrest Highway to South West Highway



South West Highway to Boyanup Picton Road



Boyanup Picton Road to South West Highway





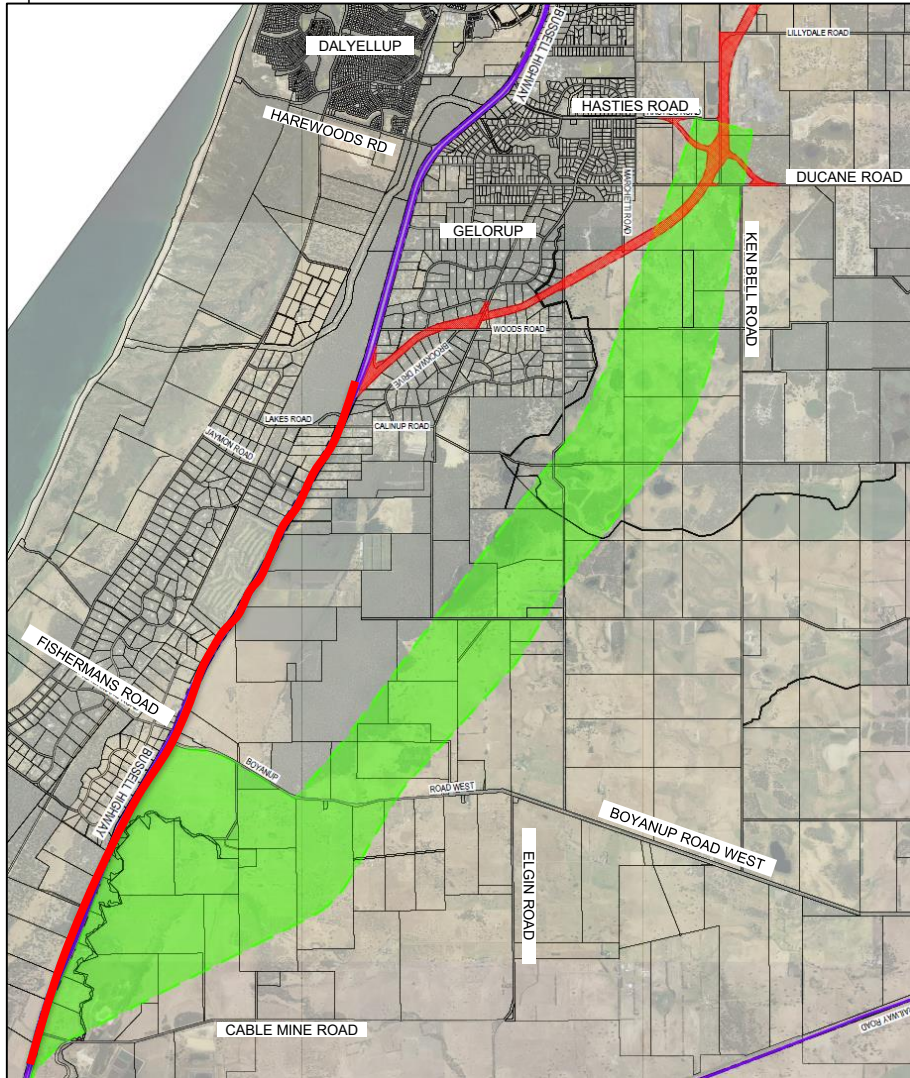
**CRG Member
Round table**

A blurred image of a modern, futuristic train or tram moving through a tunnel or underpass. The train is white with blue and red accents and is moving from left to right. The background consists of concrete pillars and beams. A blue overlay is present on the right side of the image, containing the text "Next Steps" in white.

Next Steps

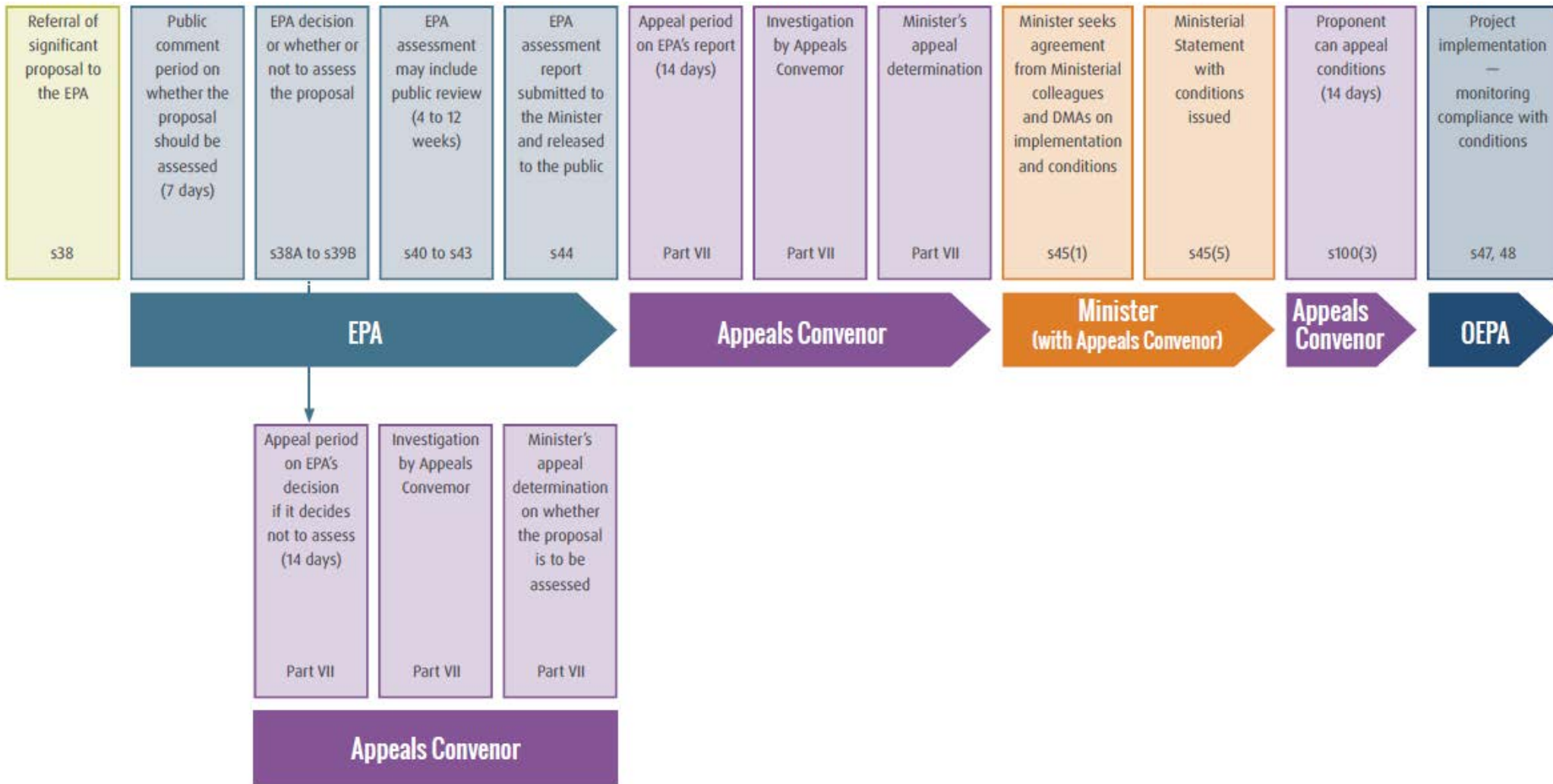
A blurred image of a truck driving under a bridge, with a blue overlay containing the word 'Resources'. The truck is moving from left to right, and the bridge structure is visible above it. The blue overlay is on the right side of the image.

Resources



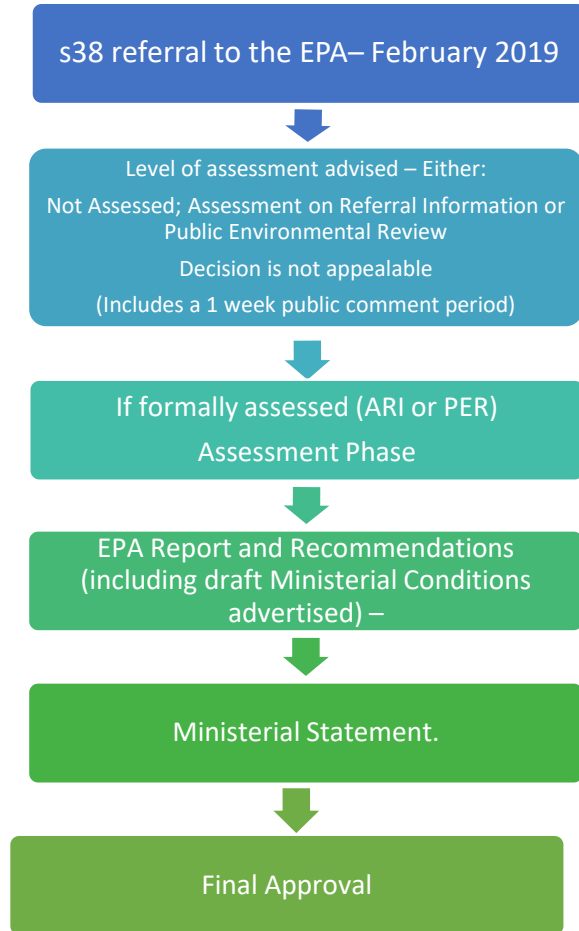
Southern Alignment Options

Environmental Impact Assessment Process

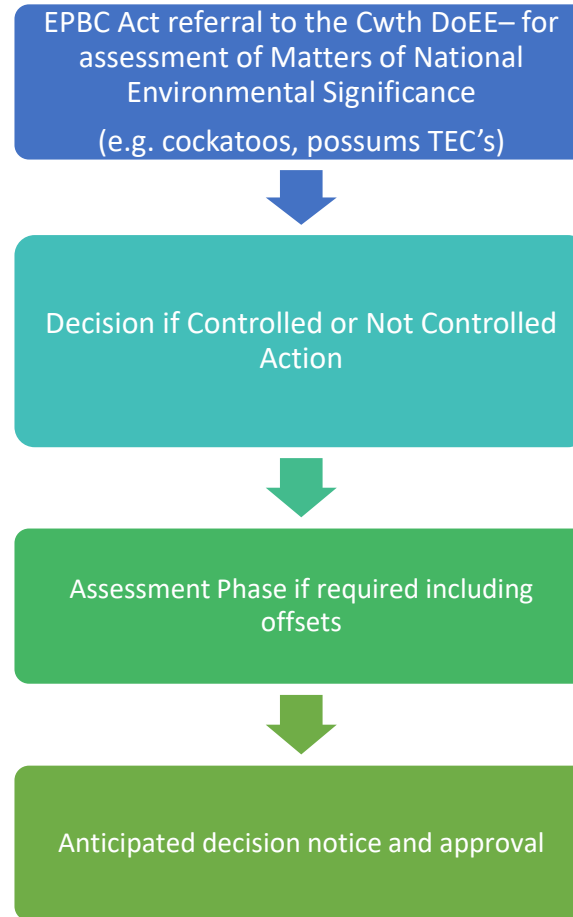


Proposed Approvals pathway

Part IV EP Act (WA)



EPBC Act (Commonwealth)



Part V EP Act (WA) Native Vegetation Regulations

