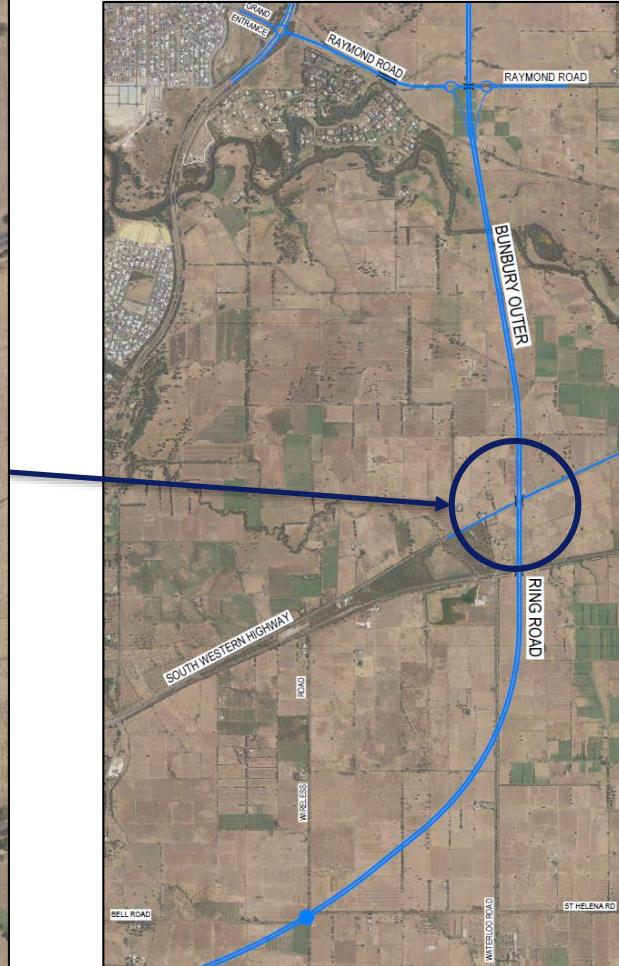


A blurred image of a white truck with blue and red accents driving under a concrete bridge structure. The truck is moving from left to right, and the background shows the underside of the bridge with concrete beams and a dark road surface. A dark blue rectangular box is overlaid on the right side of the image, containing the text "Network Operations & Connectivity" in white.

## Network Operations & Connectivity

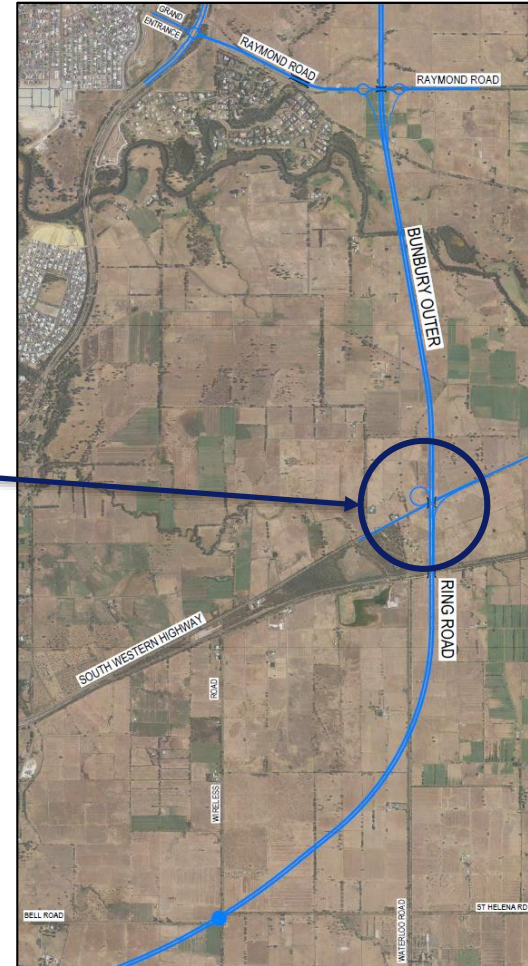
# CONNECTIVITY – South Western Hwy (North)

# Option 1 – no connection





# Option 2 – with connection - Preferred

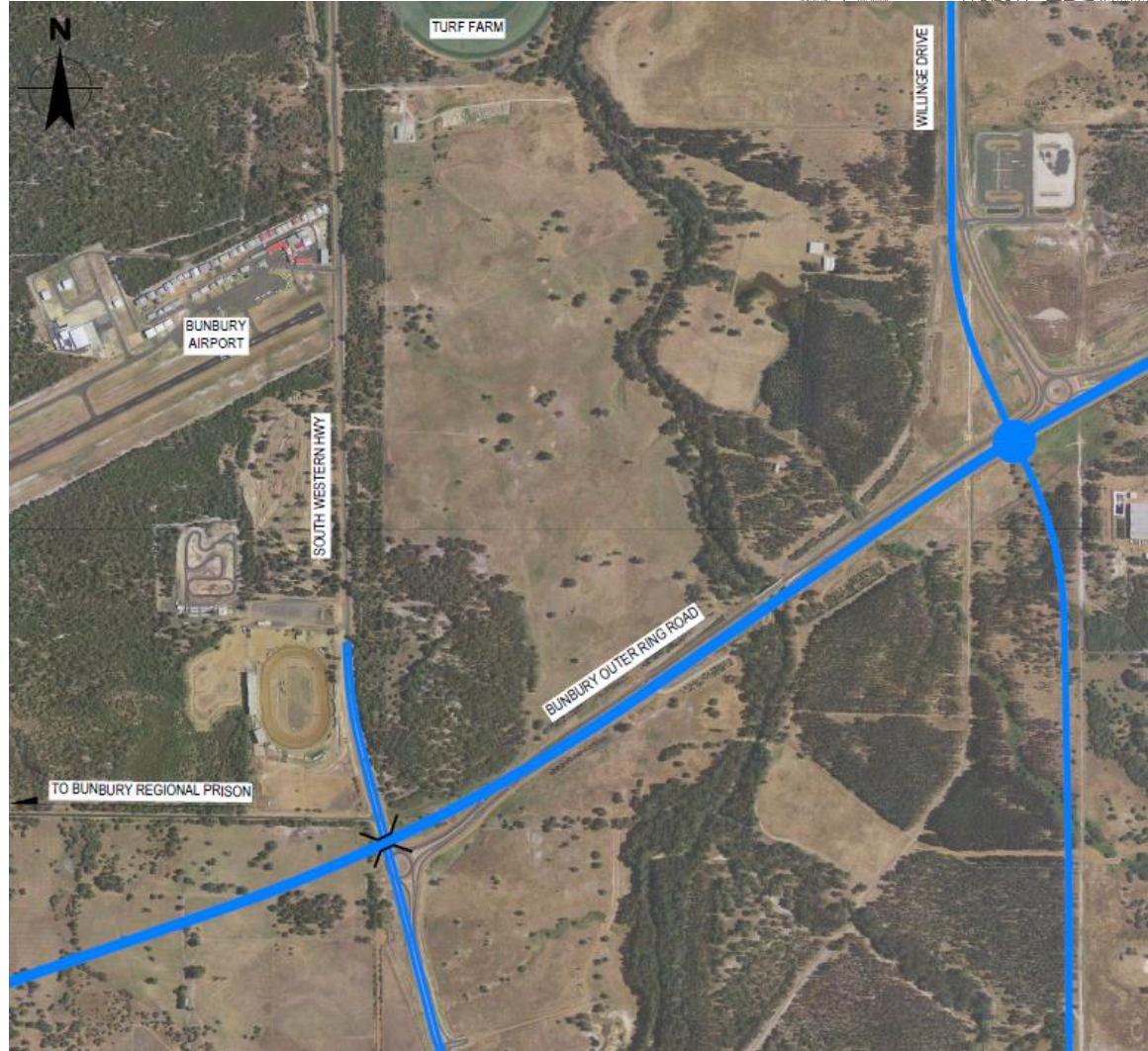


## South West Highway (North)– Recommended Option

- Recommended configuration is partial connectivity for northbound to eastbound and for westbound to southbound (Option 2)
- Provides for efficient regional and freight movements from South West Highway east of BORR to get to and from BORR/the Port
- 3km shorter route from the intersection of Coalfields Hwy and South West Hwy, avoids need for heavy vehicles to negotiate staggered T intersection at Raymond Road
- Reduce reliance on South West Highway through the Wanju and Waterloo precincts

# CONNECTIVITY – South Western Hwy (South)

# Option 1 Preferred



# Option 2





# South West Highway (South)– Recommended Option

- Recommended configuration is grade separation of BORR and South West Highway (Option 1)
- Provides flexibility in the future to accommodate development, industrial and airport
- Avoids environmental and heritage impacts associated with an additional Preston River crossing
- Avoids impacts to vegetation within the Ocean to Preston Regional Park