

Bunbury Outer Ring Road

Local Business Briefing

13 November 2020



Agenda



Topic	Presenter
Project Update	Fraser Ramsay Alliance Director
How to get involved	Matt Prendergast Commercial + Project Support Manager
Initial works	Adrian Matthews Construction Manager
HSEQ Working with us	Phil Roche HSEQ Manager
Engaging with us	Nicole Walton Community + Stakeholder Engagement Manager
Questions Discussion	

Who we are

Fraser Ramsay | Alliance Director

The logo for the South West Gateway Alliance, featuring the text "South West Gateway Alliance" in white, set against a dark blue background with a large white curved shape on the left and a stylized white swoosh on the right.

South West
Gateway Alliance

Who we are



OP

Constructor NOPs

Designer NOPs



Project Update



- 80 person project team mobilised
- Management plan development
- Planning for start early next year
 - Pending environment and heritage approvals
- ISCA sustainability planning
- Community and stakeholder engagement approach
 - Hub establishment Jan 2021
 - 13 x Advisory groups
- Geotech, ground water monitoring and other surveys beginning December 2020
 - Land owner communication and access a priority

How to get involved

Matt Prendergast | Commercial & Project Support Manager

The logo for the South West Gateway Alliance, featuring a stylized white swoosh or arc that frames the text. The text "South West Gateway Alliance" is written in a white, sans-serif font, with "South West" on the top line and "Gateway Alliance" on the bottom line.

South West
Gateway Alliance

Local Participation Targets



- Cascaded through our subcontractors and suppliers
- Reporting requirements

How to get involved: Business Register



Bunbury Outer Ring Road

A 27-kilometre free-flowing highway, linking Forrest Highway to Bussell Highway. The project will be delivered in three sections, providing an alternative route around Bunbury.

Share this project:

Northern Section - Forrest Highway to Boyanup Picton Road

- Interchanges will be constructed at Forrest Highway, Raymond Road, South Western Highway, Waterloo and Willinge Drive.
- There will be a full connection at South Western Highway, providing better access for Bunbury CBD and Ferguson Valley.

Central Section - Boyanup Picton Road to South Western Highway

- Completed in May 2013, the four-kilometre Central Section included the extension of Port Access Road (Willinge Drive).
- Willinge Drive, one of the larger interchanges, will provide access to Bunbury Port. We're also planning to extend Willinge Drive to South Western Highway, providing new access for the timber industry.

Southern Section - South Western Highway to Bussell Highway

- The Southern Section will include interchanges at Bussell Highway and Centenary Road, and a connection to Jules Road.

Check out our latest [video](#), providing a visualisation of the project and highlighting its many benefits and opportunities for the region.

27 kilometre corridor

13 traffic lights bypassed

15 minute time savings

▼ What's Happening

▼ Benefits

▼ Timeline

▼ FAQs

▼ Project History

Subscribe to project updates

Subscribe to our email list for the latest project updates and announcements.

Register your business

Express your interest to work with us and hear about the latest business opportunities

Register

Register your business here.

<https://www.mainroads.wa.gov.au/borr>

Required Services

Environment and Heritage

- Groundwater monitoring
- Environmental monitoring equipment and services (noise/dust/vibration)
- Fauna/Flora management
- Flora surveys/dieback mapping and management
- Property condition surveys
- Aboriginal Cultural Heritage/Heritage investigations
- Materials Testing/Geotechnical
- Contamination Treatment/Auditing
- Recycling/Waste Management

Construction

- Concrete supply
- Concrete reinforcement materials
- Signage supply and installation
- Landscaping services
- Street lighting supply and installation
- Painting and line marking
- Traffic management
- Demolition
- Plant hire
- Asphalt and bitumen seal
- Piling
- Material (earthworks) supply
- Concreting/Formwork/Precast/Kerbing
- Drainage/Culverts
- Surveying
- Training and Recruitment
- Mechanical services
- Fuel supplies
- Scaffolding
- Logistics/freight provider/haulage
- Road furniture/guard railing
- Noise walls/Retaining walls
- Service location/relocations
- Clearing/mulching
- Track protection (rail)
- General equipment hire
- Construction water services/water carting/dewatering
- Steel fabrication

Mobilisation works

- Site shed construction
- IT/Communications/Electrical services
- Cleaning
- Plumbing
- Water supply (office)
- Crane hire
- Office fit out/furniture
- Site works/Site fencing
- Security services
- Accommodation

OH&S

- Drug testing
- Medical services/Medical centre/GP support
- Firefighting equipment supply
- PPE provider
- Recovery vehicle services/Towage services

How to get involved



- Project will use web based portal for tendering
 - PROCUR-e
 - System is now live
 - Includes mandatory questions regarding local and Aboriginal business content
 - Initial list of procurement packages developed
 - Package list will be refined as design progresses
 - Package list will be finalised once quantity and program is known

What you need to know



- Project Bank Account - PBA
 - Dedicated trust account to make payment simultaneously from MRWA to participating Subcontractors
 - Benefits
 - Speed up payment process for next tier in supply chain
 - Increased transparency in the payment process
 - Subcontractors greater than \$20,000 (GST inclusive)
 - Secondary Subcontractors are not paid through PBA
 - In keeping with recent reviews of payments within construction industry
- ABCC - Building Code 2016
 - For building work - Enterprise agreements made after 2 December 2016 must comply with Building Code 2016
 - Subject to audit and requires monthly compliance reporting



Initial Works

Adrian Matthews | Construction Manager

The logo for the South West Gateway Alliance, featuring a stylized white swoosh or arc that frames the text.

South West
Gateway Alliance

Initial works planning



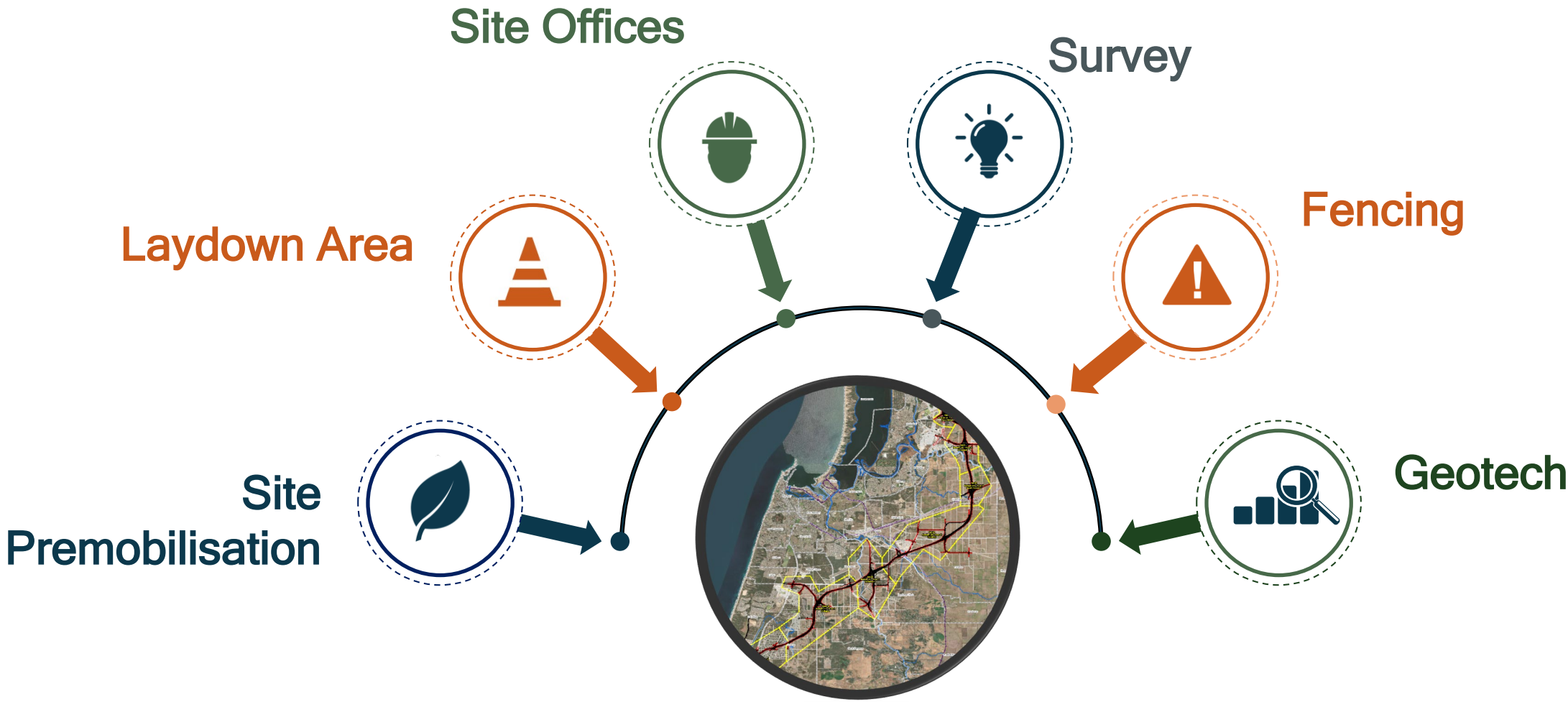
Subject to:

- Environment and heritage approvals
- Ground water / water table monitoring
- Land access

Current thinking:

- Willinge Drive Extension
- South West Highway and Willinge intersection
- Then north to south

Likely first packages



Working with us

Phil Roche | HSEQ Manager

The logo for the South West Gateway Alliance, featuring a stylized white swoosh or wave shape on a dark blue background. The text "South West Gateway Alliance" is written in white, with "South West" on the top line and "Gateway Alliance" on the bottom line.

South West
Gateway Alliance

HSE Culture



- We have a vision of No Harm to people and the Environment
- We want to work with people who share our vision and want to help to us achieve it
- The success of the project is sum of all parts



BE SAFE. HOME SAFE.



Onboarding

Onboard company, people and
plant through *Lucidity*

Requirements

Minimum needs are white card,
plant tickets, licenses



**Plant & Equipment
Condition Inspections**
Prior to entry

Online Induction & Site Orientation

Complete Online Induction &
site orientation

**Drug & Alcohol
testing + Medical**
Prior to being on site

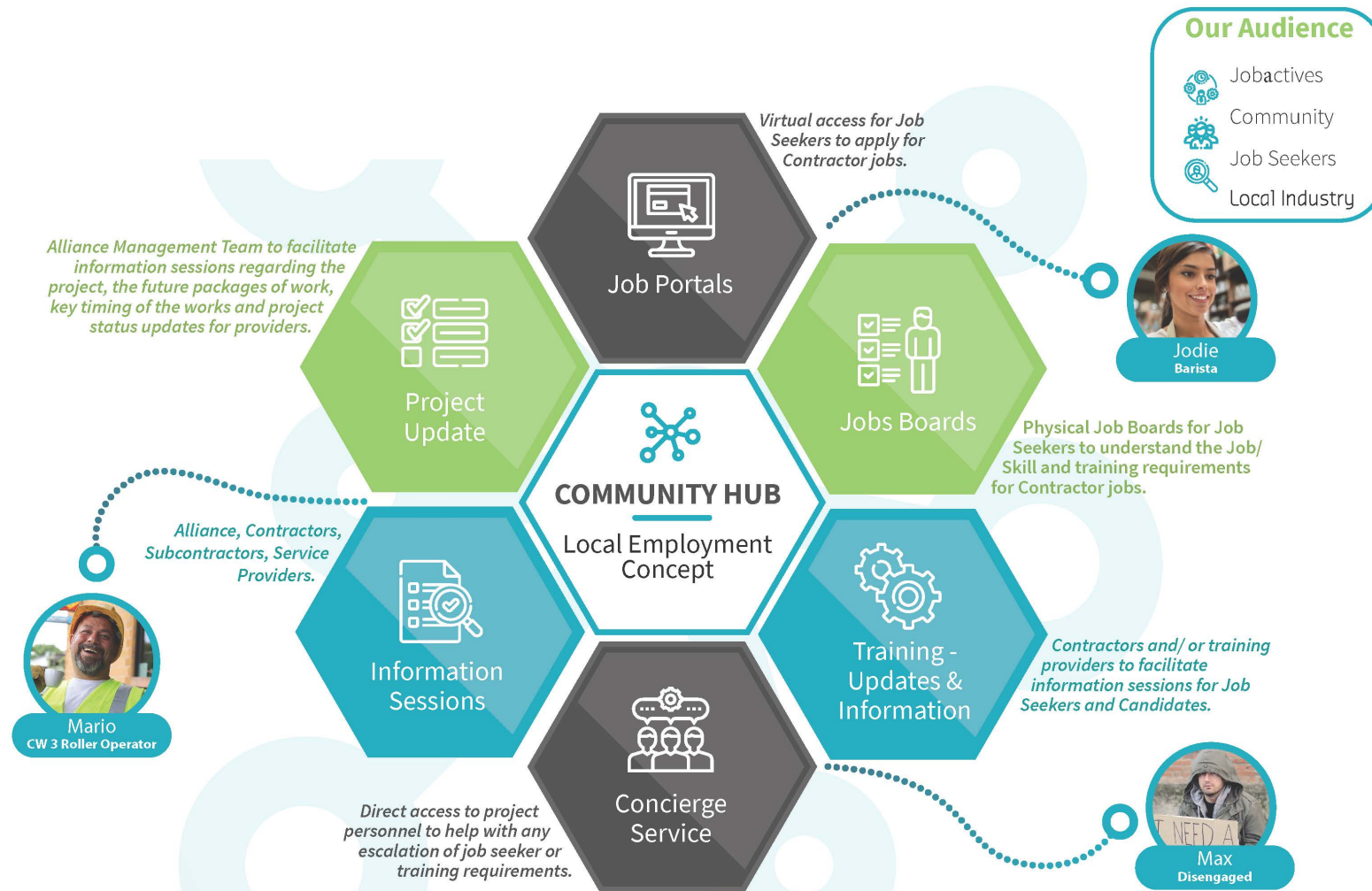
Engaging with us

Nicole Walton | Community + Stakeholder Engagement Manager

The logo for the South West Gateway Alliance, featuring a stylized white swoosh or arc that frames the text.

South West
Gateway Alliance

The Hub



- Aboriginal Participation Coordinator
- Local Industry Relationships Co-ordinator
- Local Content Champion



Discussion

South West Gateway Alliance
Suite 3, 3 Craig Street, Burswood
Western Australia 6100