



Australian Government

**BUILDING OUR FUTURE**



**mainroads**  
WESTERN AUSTRALIA

# Bunbury Outer Ring Road Local Business Briefing

March 15, 2022

S22 | Raymond Road



# Agenda

- Construction update
- Overview of Building code obligations by ABCC
- 3 month procurement lookahead
- Delivery strategy
- BORR jobs
- Yaka Dandjoo update



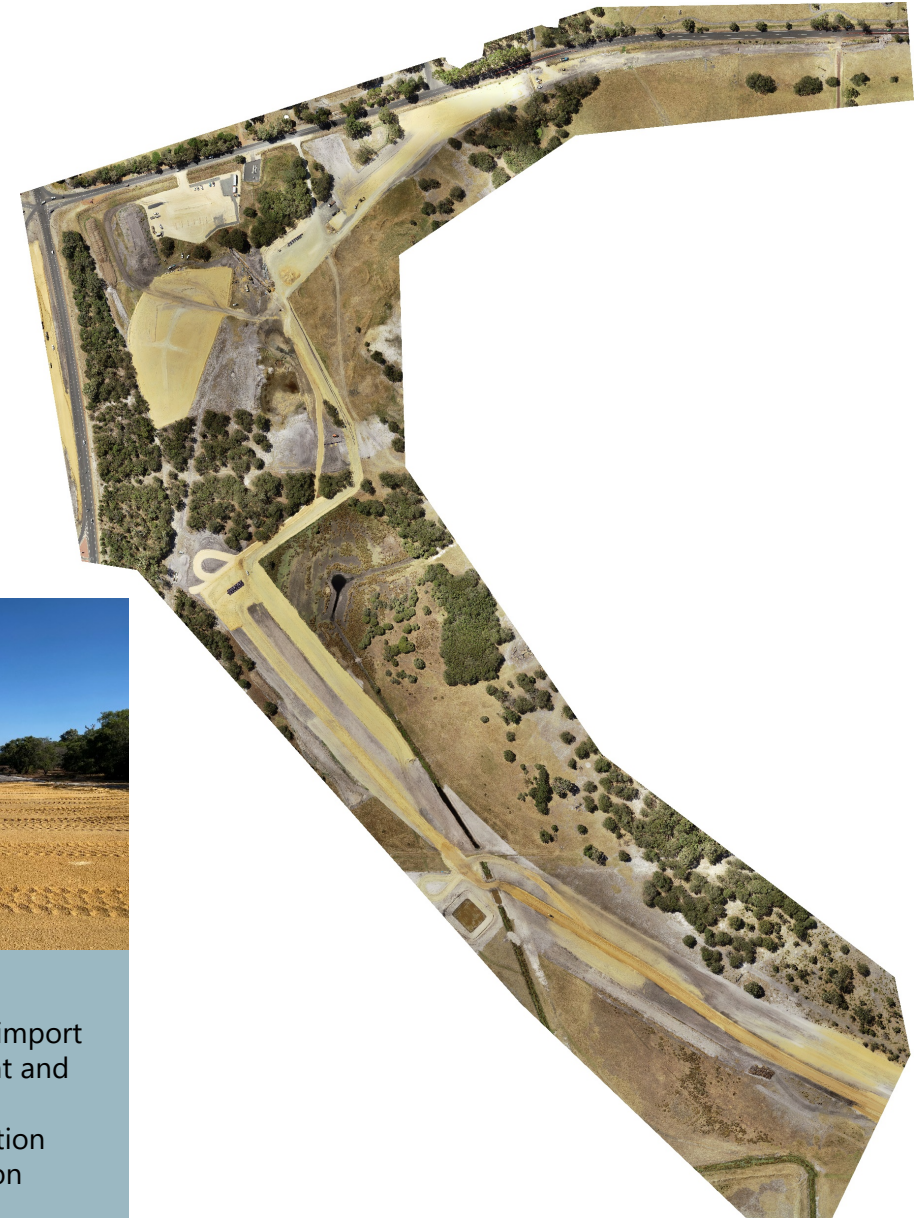
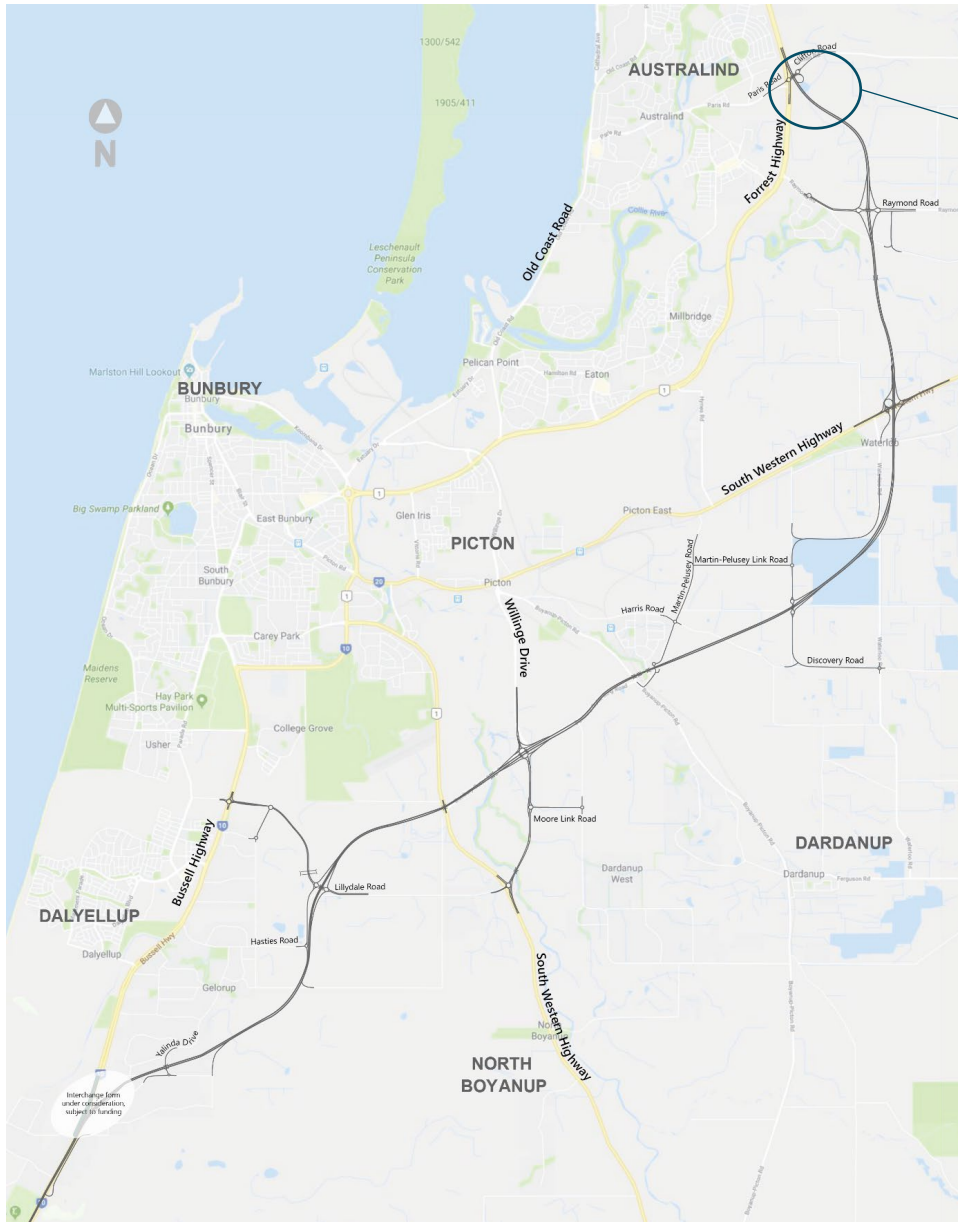
Australian Government



mainroads  
WESTERN AUSTRALIA

**BUILDING OUR FUTURE**

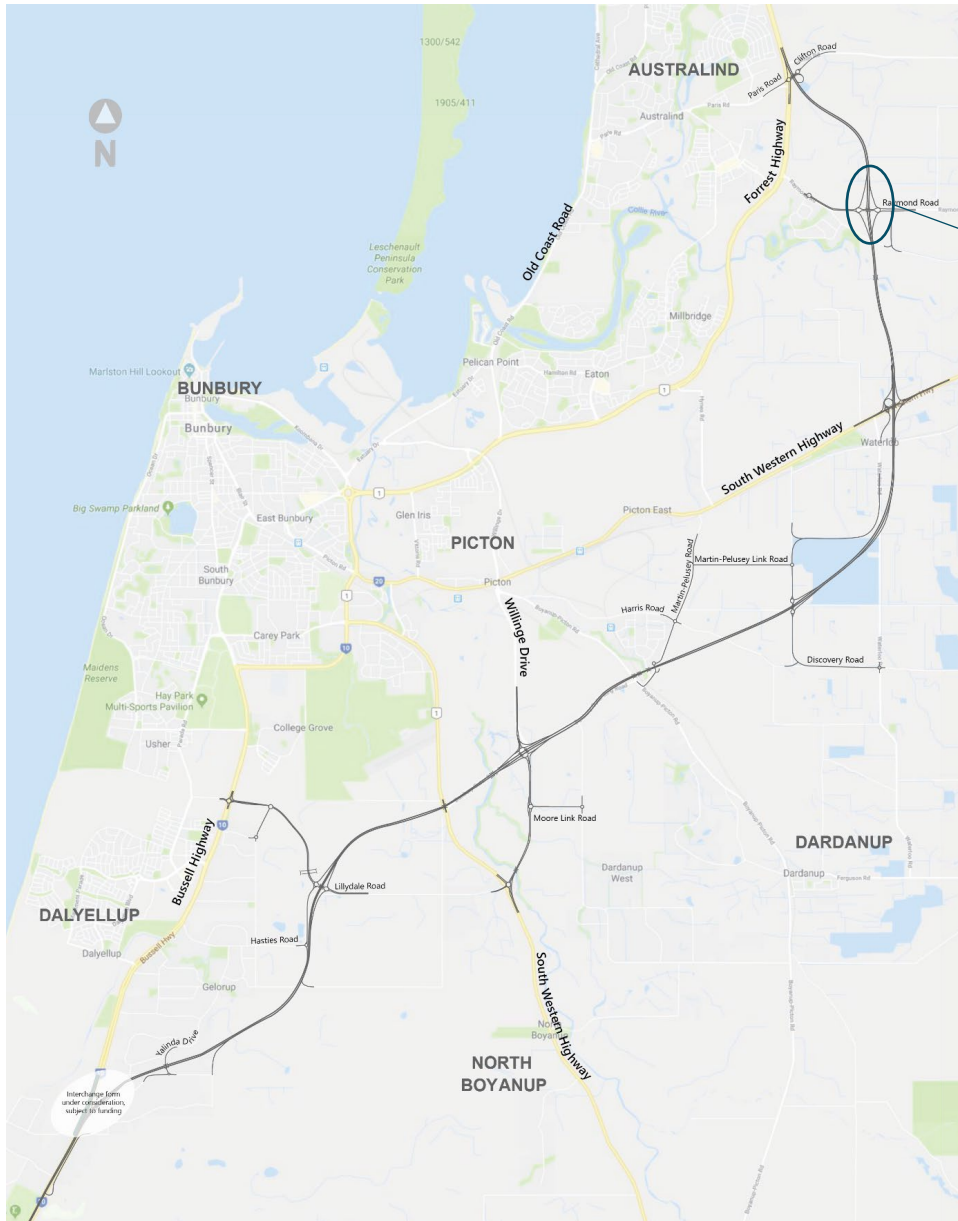
# Construction update



## Paris/Clifton:

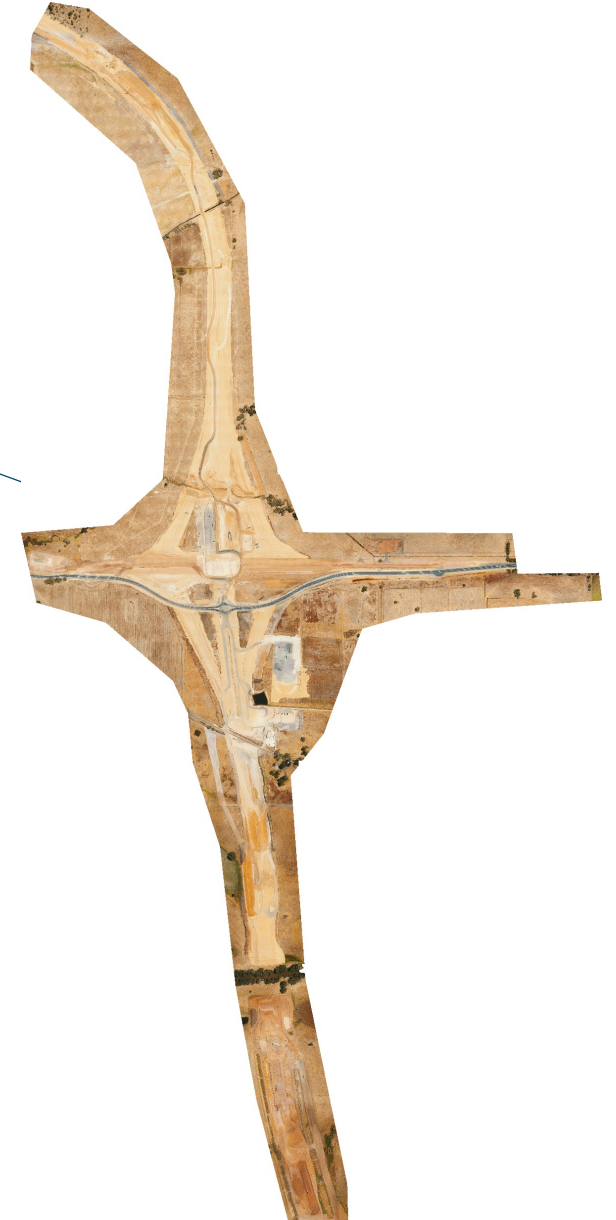
- Continuation of sand import for the main alignment and Clifton road ramp
- Turkeys nest construction
- Foundation preparation

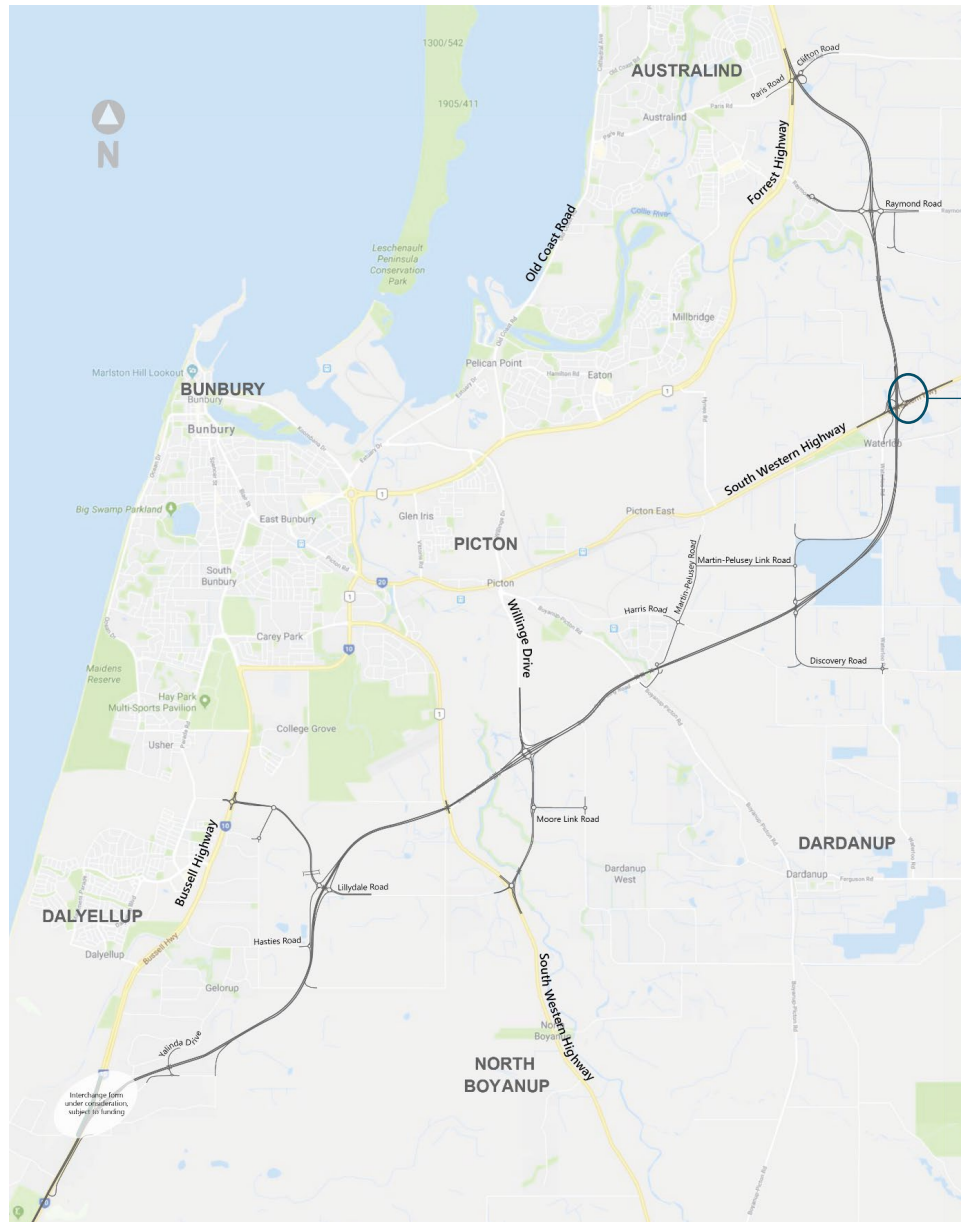




## Raymond/Treendale:

- Traffic switched onto temporary diversion road
- Piling pads for Bridge 1838 completed ahead of schedule
- Ground improvement works Collie River Bridge 1839 / 40 completed ahead of schedule



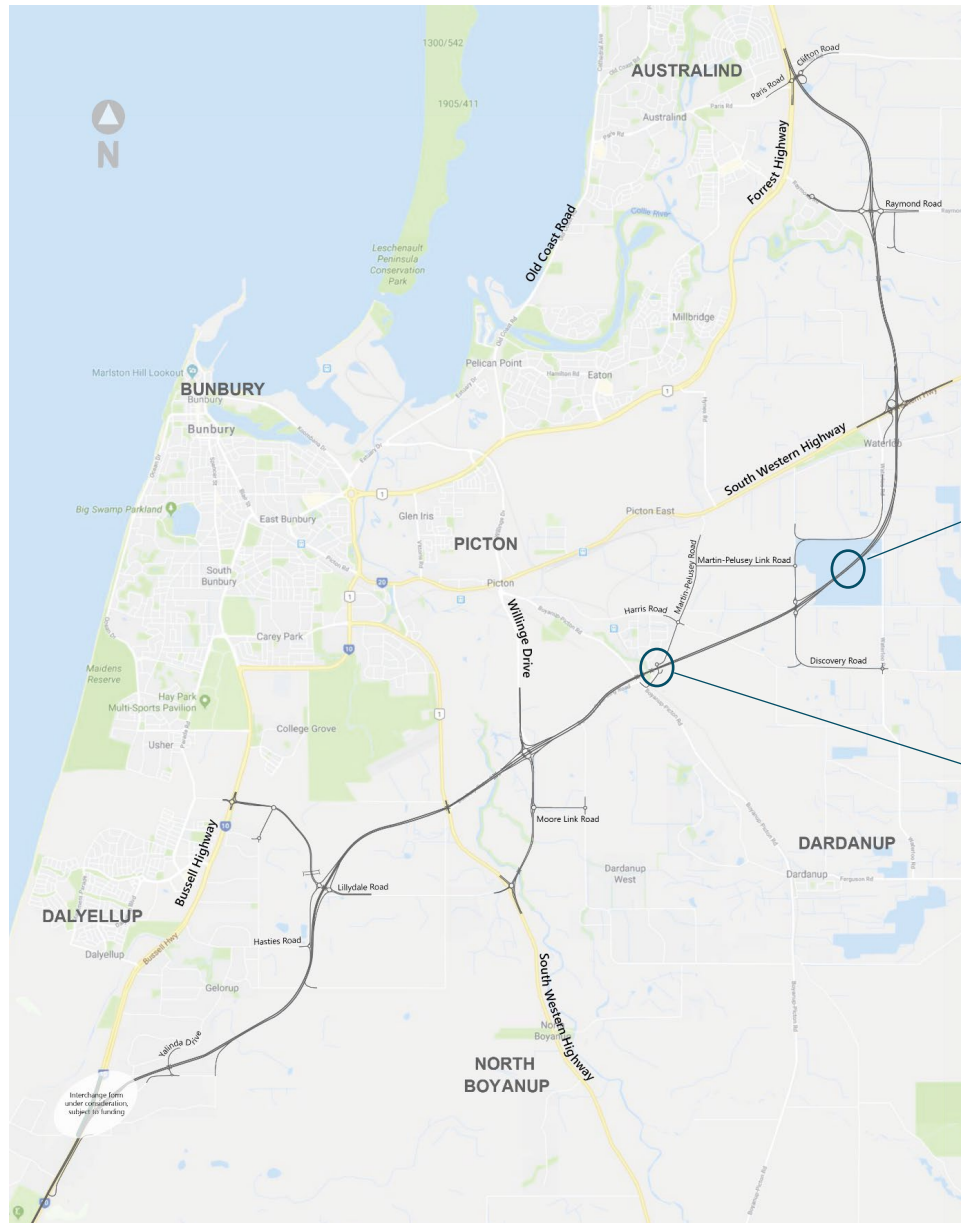


## South Western Highway /Waterloo:

- Ground improvement works for Bridge 1845 abutment completed ahead of schedule
- The Telstra Contract for relocation works was finalised and partially executed
- Continuation of embankment construction





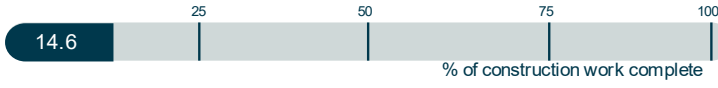


## Discovery Road/Boyanup /Picton:

- Continuation of clearing, grubbing and topsoil strip
- Embankment fill and construction
- Excavation of turkeys nest
- All weather track construction







Over 1.2 million tonnes of sand imported to site







Australian Government



**BUILDING OUR FUTURE**

# Building code obligations



Australian Government  
Australian Building and  
Construction Commission



# Australian Building and Construction Commission (ABCC)







# Who we are and what we do

- Australian government regulator
- Building and construction industry
- Improved industrial relations
- Without distinction – employers, workers, unions



# What is the Building Code?

## ***The Code for the Tendering and Performance of Building Work 2016 (Building Code)***

- EOI or tender for Commonwealth funded building work on or after 2 December 2016
- Applies to new projects including privately funded
- Expected standards for Commonwealth funded and private building work





# What are the requirements of the Code?

**Code covered entities must comply with all designated building industry laws.**

Code requirements relate to:

- eligibility to tender for Commonwealth funded building work and tendering practices
- reporting requirements
- compliance with right of entry
- coercion, etc.



# 7 General Responsibilities

## Code covered entities must

- (a) comply with this code of practice; and
- (b) comply with any WRMP that applies to building work; and
- (c) respond to requests for information made by the ABCC concerning matters relating to this code of practice.





# 11 Eligibility to tender

The Code has two tendering eligibility requirements for code covered entities:

## **Compliance with Section 11 of the Code**

- Enterprise agreements cannot include certain clauses
- Requirement for letter of compliance or self-declaration
- Proof of eligibility assessment tool on our website

## **Exclusion sanctions**

- Cannot tender if subject to exclusion sanction



# 11D Security of payment

Code covered entities must:

- comply with SOP laws
- report payment disputes or delays – subcontractors can report too
- make payments in a timely manner
- resolve disputes reasonably
- document and follow a dispute settlement process
- not coerce or pressure subcontractors to exercise or not exercise SOP rights
- comply with adjudication.

The ABCC may be able to seek rectification in relation to code covered entities.



# 13 Freedom of association

Freedom of association is the right to join or not join a building association (such as a union or employer association).

Code covered entities are required to adopt and implement policies and practices that ensure persons are:

- free to become, or not become, members of a building association
- free to be represented, or not be represented, by building associations
- free to participate, or not participate, in lawful industrial activities.
- not discriminated against in respect of benefits in the workplace because they are, or are not, members of a building association.





# 16 A Fitness for work

## Schedule 4

- No person can attend a site to perform work under the influence of drugs or alcohol.
- Zero tolerance approach to this requirement
- WRMPs must contain a particular policy for fitness to work.



# Reporting industrial action

Must report to the ABCC as soon as practicable and within 24 hours:

## **In relation to Commonwealth funded building work**

- actual or threatened industrial action (whether protected industrial action or industrial action that is not protected) by employees of the code covered entity as soon as practicable, but no later than 24 hours, after becoming aware of the threat or action.
- Must take steps to the extent reasonably practicable to prevent or bring an end to unprotected industrial action.
- Must notify the ABCC of a breach or suspected breach (other than industrial action) as soon as practicable. No later than 2 working days (shorter in some cases).
- Steps proposed to rectify the breach.





# Support for Code compliance

Detailed information about Code rights and obligations is available at [www.abcc.gov.au/building-code](http://www.abcc.gov.au/building-code)

Our website also includes the following resources:

- notification forms
- model guides and templates for WRMPs, tenders and contracts
- tools to assess Code coverage and eligibility to tender

Advice is also available through our hotline: 1800 003 338

# ABCC On Site

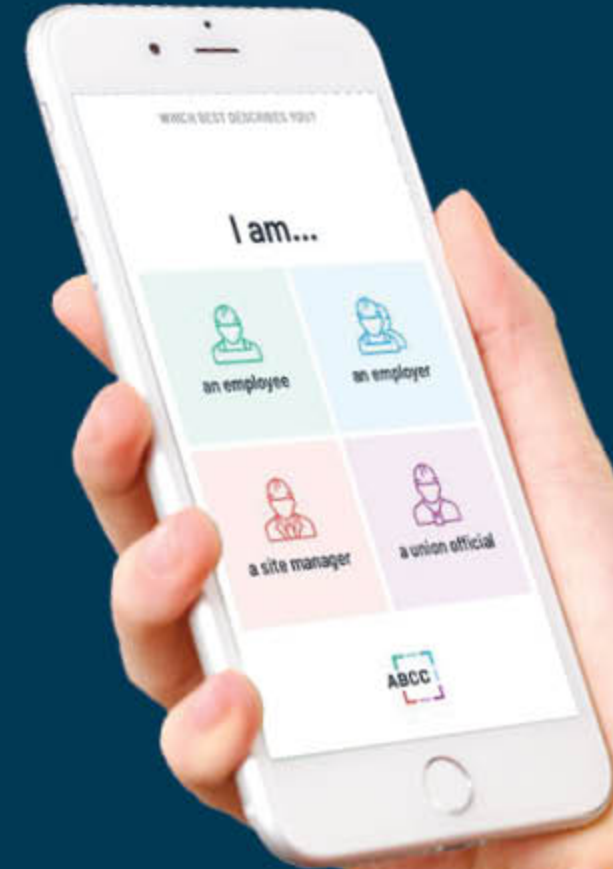
Your guide to your rights on site

- Wages and entitlements
- Coercion
- Freedom of association
- Right of entry
- Unlawful industrial action
- Unlawful pickets

Download on the  
App Store



ANDROID APP ON  
Google





Australian Government  
Australian Building and  
Construction Commission



# Industry Update

Get the latest news from the ABCC  
each month from our free online  
publication.



Scan the QR code or visit  
[abcc.gov.au/subscribe](https://abcc.gov.au/subscribe)







Australian Government  
Australian Building and  
Construction Commission



# Find out more



[www.abcc.gov.au](http://www.abcc.gov.au)



1800 003 338



[enquiry@abcc.gov.au](mailto:enquiry@abcc.gov.au)



Australian Government  
Australian Building and  
Construction Commission



**Christopher Stanley**

ASSISTANT DIRECTOR - OPERATIONS WA

Level 2  
863 Hay St  
Perth WA 6000

08 9238 9787  
0431 764 124  
[chris.stanley@abcc.gov.au](mailto:chris.stanley@abcc.gov.au)



Australian Government



**BUILDING OUR FUTURE**

# Local procurement

**Current Aboriginal suppliers (19)**

- BCE Boodja Surveying
- Countryman Safety Pty Ltd
- FenceWright
- IPS consultants
- Kali Group
- Kooyar Wongi
- Koormal Contracting
- Maali Group
- Marrak Holdings
- Pindari WA
- R&N Contacting
- Roelands Village
- Safespear
- Sista Girl Sign and Print Pty Ltd
- WARGL
- South-West Aboriginal Medical
- UMCC
- Kiepa Boodja\*
- Breakaway Corporation\*

**Non-Aboriginal local suppliers (178)**

**45** businesses  
with spend  
over **\$50k**

**57** businesses  
with spend  
over **\$10k**

**120**  
businesses  
with spend  
under **\$10k**

**418** local  
business  
registered

**10**  
contracts  
over **\$50k**

**67**  
Aboriginal  
business'  
registered





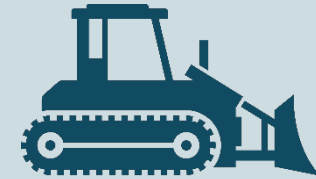
## 8 packages awarded

Mentoring Services  
Rail Safety Services  
Hammerhead Formwork  
Reinforcement Supply  
Ground Improvement CMC  
Construction Water Pumps  
Service Relocation Works  
Form, Reinforce and Pour Bridge Works



## Waiting to award

Fencing  
Drainage  
Site offices  
Earthworks packages  
Steel Safety Barrier (North)  
Bored Piling  
Quarry Products  
Local Road Package 1  
Bulk Fuel



## 90-day Upcoming tenders

Surveying Services  
Electrical and ITS  
Site Wide Labour  
Asphalt Package  
Noise Walls  
T-Roffs



Australian Government



mainroads  
WESTERN AUSTRALIA

**BUILDING OUR FUTURE**

# Delivery strategy

Package Description	Details	Indicative value	Package Owner
<b>Surveying</b>	Site surveying services	Extra Large	Carl Ryan
<b>Time-lapse videography</b>	Provision of timelapse cameras and video data	Small	Luke Duff
<b>Electrical and ITS</b>	Combined electrical and communications package	Extra Large	Ross Kinnear
<b>Stabilised Sand</b>	Supply of stabilized sand	Medium	Patrick McNerney
<b>Expansion Joints</b>	Expansion Joints Superstructure Package	Small	Shane Gallagher
<b>Drainage around MSE Walls</b>	MSE Drainage Substructure Package (TBC)	Small	Simon Blazejczyk
<b>Plant Hire</b>	Site Wide - Wet Hire and Dry Hire (split into various packages)	Small/Medium	-
<b>Asphalt Package - FDA &amp; SMA</b>	Site Wide FDA, wearing course, micro surfacing & SMA surfacing	Large	John McLarnon
<b>Hydromulching Services</b>	Site wide	TBC	Jon Bowler
<b>Noise Wall Post and Panel Supply and Installation (North)</b>	Noise Walls Section 22 -24 Post and Panel - 1.5 km - 3.30 -4.30 m high	Extra Large	Sebastian Bogaczyk
<b>Fauna Fencing</b>	Supply and install agricultural fencing for the southern section	Medium	Luke Senior
<b>Agricultural Fence (South)</b>	Supply and install agricultural fencing for the southern section	Medium	Luke Senior
<b>Construction Water Pumps (South)</b>	Supply and install of construction water infrastructure to southern section	Small	Jon Bowler
<b>Heavy T-Roffs Girder Lifts Cranage</b>	Heavy T-Roffs Lifts Craneage Package BR 1838, 1837	Medium	Shane Gallagher
<b>Market Research</b>	Services for market research through community perceptions surveys	Small	Luke Duff

**Legend**

Small	<\$500k
Medium	<\$2.0M
Large	<10.0M
Extra Large	>\$10.0M



	Section 21   Paris / Clifton and Section 22   Raymond Road	Section 23   South Western Highway and Section 24   Discovery Road	Section 31   Lillydale Road and Section 32   Bussell Highway
<b>Road furniture</b> 	<b>Scope:</b> Signage, Lines, Grabs/Bollards, Fencing <b>Delivery strategy:</b> Multiple sub-contract packages <b>Contract type:</b> Schedule of rates and lump sum <b>Timing:</b> Mid 2023	<b>Scope:</b> Signage, Lines, Grabs/Bollards, Fencing <b>Delivery strategy:</b> Multiple sub-contract packages <b>Contract type:</b> Schedule of rates and lump sum <b>Timing:</b> Early 2023	<b>Scope:</b> Signage, Lines, Grabs/Bollards, Fencing <b>Delivery strategy:</b> Multiple sub-contract packages <b>Contract type:</b> Schedule of rates and lump sum <b>Timing:</b> Late 2023
<b>Landscaping</b> 	<b>Scope:</b> Hard and soft landscaping <b>Delivery strategy:</b> Multiple sub-contract packages <b>Contract type:</b> Schedule of rates and lump sum <b>Timing:</b> Early 2023	<b>Scope:</b> Hard and soft landscaping <b>Delivery strategy:</b> Multiple sub-contract packages <b>Contract type:</b> Schedule of rates and lump sum <b>Timing:</b> Early 2023	<b>Scope:</b> Hard and soft landscaping <b>Delivery strategy:</b> Multiple sub-contract packages <b>Contract type:</b> Schedule of rates and lump sum <b>Timing:</b> Early 2023
<b>Barriers</b> 	<b>Scope:</b> 19,145lm Steel barrier 2,929lm Concrete barrier <b>Delivery strategy:</b> Multiple sub-contract packages <b>Contract type:</b> Schedule of rates and lump sum <b>Timing:</b> August 2022	<b>Scope:</b> 29,101lm Steel barrier 4,351lm Concrete barrier <b>Delivery strategy:</b> Multiple sub-contract packages <b>Contract type:</b> Schedule of rates and lump sum <b>Timing:</b> August 2022	<b>Scope:</b> 23,342lm Steel barrier 4,652lm Concrete barrier <b>Delivery strategy:</b> Multiple sub-contract packages <b>Contract type:</b> Schedule of rates and lump sum <b>Timing:</b> August 2023
<b>Pavement</b> 	<b>Scope:</b> 297,496m2 Pavements <b>Delivery strategy:</b> Multiple sub-contract packages <b>Contract type:</b> Schedule of rates and lump sum Plant and labour hire <b>Timing:</b> September 2022	<b>Scope:</b> 504,498m2 Pavements <b>Delivery strategy:</b> Multiple sub-contract packages <b>Contract type:</b> Schedule of rates and lump sum Plant and labour hire <b>Timing:</b> September 2022	<b>Scope:</b> 480,753m2 Pavements <b>Delivery strategy:</b> Multiple sub-contract packages <b>Contract type:</b> Schedule of rates and lump sum Plant and labour hire <b>Timing:</b> September 2023
<b>Drainage</b> 	<b>Scope:</b> 5039lm Culverts RCP and RCBC <b>Delivery strategy:</b> 8010lm Pit and pipe <b>Contract type:</b> Multiple sub-contract packages Schedule of rates for install, FRP, plant and labour hire <b>Timing:</b> Underway	<b>Scope:</b> 10,424lm Culverts RCP & RCBC <b>Delivery strategy:</b> 10,104lm Pit and pipe <b>Contract type:</b> Multiple sub-contract packages Schedule of rates for install, FRP, plant and labour hire <b>Timing:</b> Commence Mid March	<b>Scope:</b> 2,155lm Culverts RCP & RCBC <b>Delivery strategy:</b> 11,108lm Pit & Pipe <b>Contract type:</b> Multiple sub-contract packages Schedule of rates for install, FRP, plant and labour hire <b>Timing:</b> Commence early 2023
<b>Structures</b> 	<b>Scope:</b> BR 1837, BR 1838, BR 1839/40 <b>Delivery strategy:</b> Sub-contract <b>Contract type:</b> Schedule of rates and lump sum <b>Timing:</b> BR 1838 Underway, BR 1837 from April 2022	<b>Scope:</b> BR 1841, BR 1842, BR 1845 <b>Delivery strategy:</b> Sub-contract <b>Contract type:</b> Schedule of rates and lump sum <b>Timing:</b> BR 1841 Underway, BR 1842 from May 2022, BR 1845 from June 2022	<b>Scope:</b> BR 1905, BR 1906, BR 1907, BR 1916 <b>Delivery strategy:</b> Sub-contract <b>Contract type:</b> Schedule of rates and lump sum <b>Timing:</b> Commencement between December 2022 and March 2023
<b>Earthworks</b> 	<b>Scope:</b> 1.7M m3 Earthworks <b>Delivery strategy:</b> Self managed <b>Contract type:</b> Schedule of rates, wet and dry <b>Timing:</b> hired plant Underway, opportunities until late 2023	<b>Scope:</b> 2.2M m3 Earthworks <b>Delivery strategy:</b> Self managed <b>Contract type:</b> Schedule of rates, wet and dry <b>Timing:</b> hired plant Underway, opportunities until late 2023	<b>Scope:</b> 1.2M m3 Earthworks <b>Delivery strategy:</b> Self managed <b>Contract type:</b> Schedule of rates, wet and dry <b>Timing:</b> hired plant Underway, opportunities until late 2023



Area	SECTION 22 Treendale Rd	SECTION 24 Discovery / Harris Rd South	SECTION 24 Discovery/ Brysinda Rd North	Section 24 Martin-Pelusey Rd upgrade	Section 24 Moore Rd extension	Section 11 PSP Alignment	SECTION 31 Bussell / Centenary Rd Roundabout	SECTION 32 Bussell Highway
Scope:	15,800 m3 Earthworks  141lm Culverts RCP & RCBC  11,095 m2 Pavements	63,700 m3 Earthworks  195lm Culverts RCP & RCBC  301lm Pit & Pipe  28,300 m2 Pavements	122,700 m3 Earthworks  370lm Culverts RCP & RCBC  342lm Pit & Pipe  56,000 m2 Pavements	87,360 m3 Earthworks  192lm Culverts RCP & RCB  703lm Pit & Pipe  38,300 m2 Pavements	22,000 m3 Earthworks  124lm Pit & Pipe  15,500 m2 Pavements	60,000 m3 Earthworks  200lm Culverts RCP & RCB  16,000 m2 Pavements	36,200 m3 Earthworks  550lm Pit & Pipe  22,080 m2 Pavements	199,500 m3 Earthworks  200lm Culverts RCP & RCB  1220 m Pit & Pipe  79,595 m2 Pavements
Start date:	1 Oct 2022	1 May 2022	10 Jun 2022	24 Apr 2023	27 Feb 2023	1 Feb 2023	1 Jul 2022	3 Nov 2022
Finish date:	1 May 2023	20 Dec 2022	1 Mar 2022	12 Jan 2024	20 Dec 2023	1 Dec 2023	10 Apr 2023	1 Jan 2024
Package released to market:	6 Aug 2022	Closes 16 Mar 2022	15 Apr 2022	27 Feb 2023	2 Jan 2023	1 Nov 2023	6 May 2022	8 Sep 2022

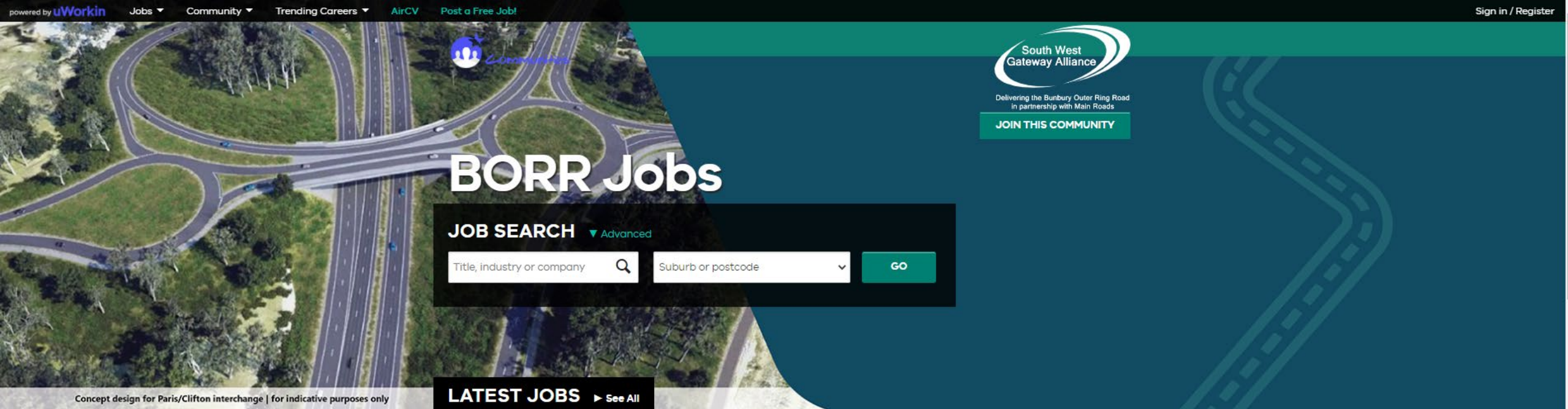


Australian Government



**BUILDING OUR FUTURE**

# BORR Jobs



## What is it?

- BORR Jobs is a free website for Businesses and Jobseekers
- Advertise BORR roles you have available
- Register your interest in working on the BORR Project



## How can it help?

- Free of charge
- Find jobs available on the project
- Find pro active candidates that want work on the project
- For more information or assistance contact Emma Meldrum at Community Hub



Australian Government



**BUILDING OUR FUTURE**

# Yaka Dandjoo update



# Sustainable Employment Initiative Yaka Dandjoo Program

COHORT ONE



**16** participants completed the first 5 phases of the program

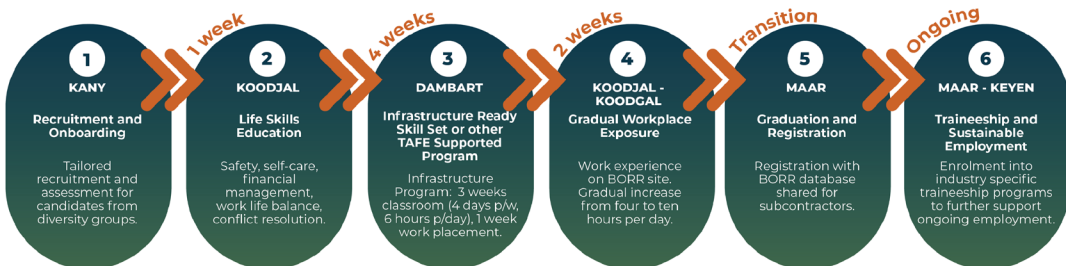
COHORT TWO



**29** participants completed the first 5 phases of the program



## YAKA DANDJOO PROGRAM PHASES



**18** graduates are now employed, 14 of those directly on the BORR Project

**72%** of employed participants identify as Aboriginal

**40%** are woman entering the construction industry for the first time





Australian Government



**BUILDING OUR FUTURE**

**Thank you**