



Australian Government



BUILDING OUR FUTURE

Business Briefing

Thursday 25 February 2021

Agenda

- Project update
- Construction look ahead
- Procurement process and requirements
- uWorkin opportunities
- Close



Australian Government



BUILDING OUR FUTURE

Project update

Fraser Ramsay | Alliance Director

South West Gateway Alliance Charter

Our Vision

Together we will proudly and responsibly create transformational infrastructure for the South West that realises opportunities to provide lasting social and economic benefits.



Our Values



Excellence

We work with quality and purpose to be outstanding.



Commitment

We follow through on our promises and act on our word.



Collaboration

We welcome working with others, teams and community to enhance lives.



People and Culture

We embrace diversity, learning and growth and the outcomes this creates.



Integrity

We are honest, reliable and accountable for our actions.



Delivery objectives *

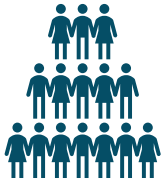
- Complete within Main Roads' Standards
- Deliver value for money and realise a net benefit to the community
- Minimise risk
- Be environmentally and socially sensitive
- Meet or exceed our sustainability targets
- Minimise ongoing maintenance costs
- Demonstrate innovation
- Increase local industry capability
- Implement sustainable procurement practices including local Aboriginal business
- Maximise local business procurement including local Aboriginal business
- Increase employment opportunities for Aboriginal people



What we are measured against

- Health and safety
- Quality
- Timeliness
- Environment
- Sustainability
- Cost
- Network user satisfaction
- Reputation and community stakeholder engagement
- Aboriginal participation
- Industry sustainability
- Alliance health, people and culture

*The delivery objectives have been summarised. The full objective statements can be found in the Project Alliance Agreement.



100+

person project team
mobilised



Three offices established at:
Craig Street, Burswood
Hales Street, Davenport
Victoria Street, Bunbury



Environment and
S18 Approvals for
Northern and
Central

Management plans
in development



Nine advisory
groups
established

Ministerial event
occurred on
29th January



ISCA

Sustainability
Design and As Built



Site
investigations
occurring across
the alignment



Construction works
commencing around
Willinge Drive and
Raymond Road



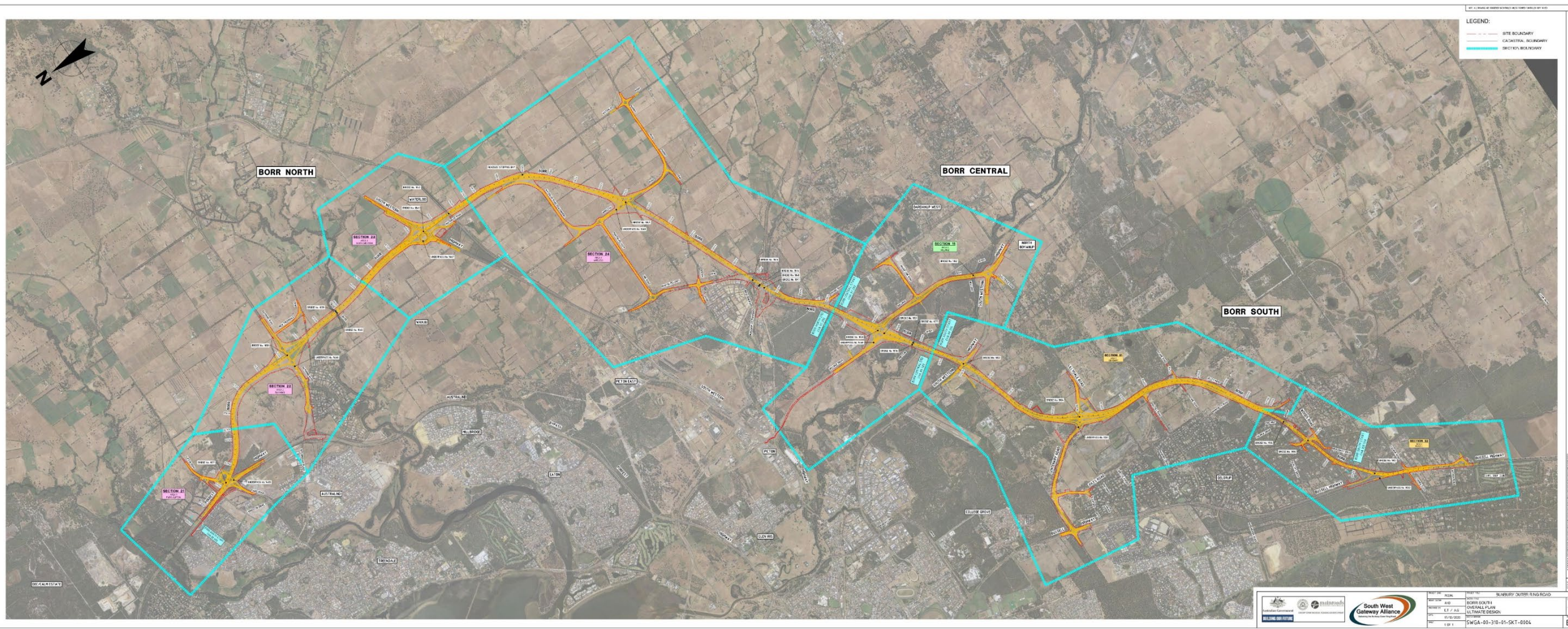
Australian Government



BUILDING OUR FUTURE

Construction look ahead

Adrian Matthews | Construction Manager



**DESIGN**

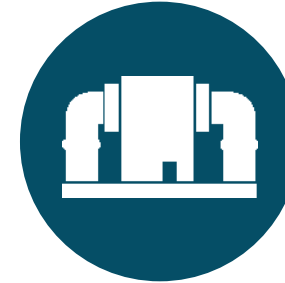
Final design approval prior to commencing structural works (foundations / bridge works).

**LAND ACCESS**

Remainder of land access for North and Central by 4th quarter 2021.

**PROJECT APPROVALS**

Southern Section no earlier than late 2021

**SERVICES**

Major service relocations progressively for the next 18 months.

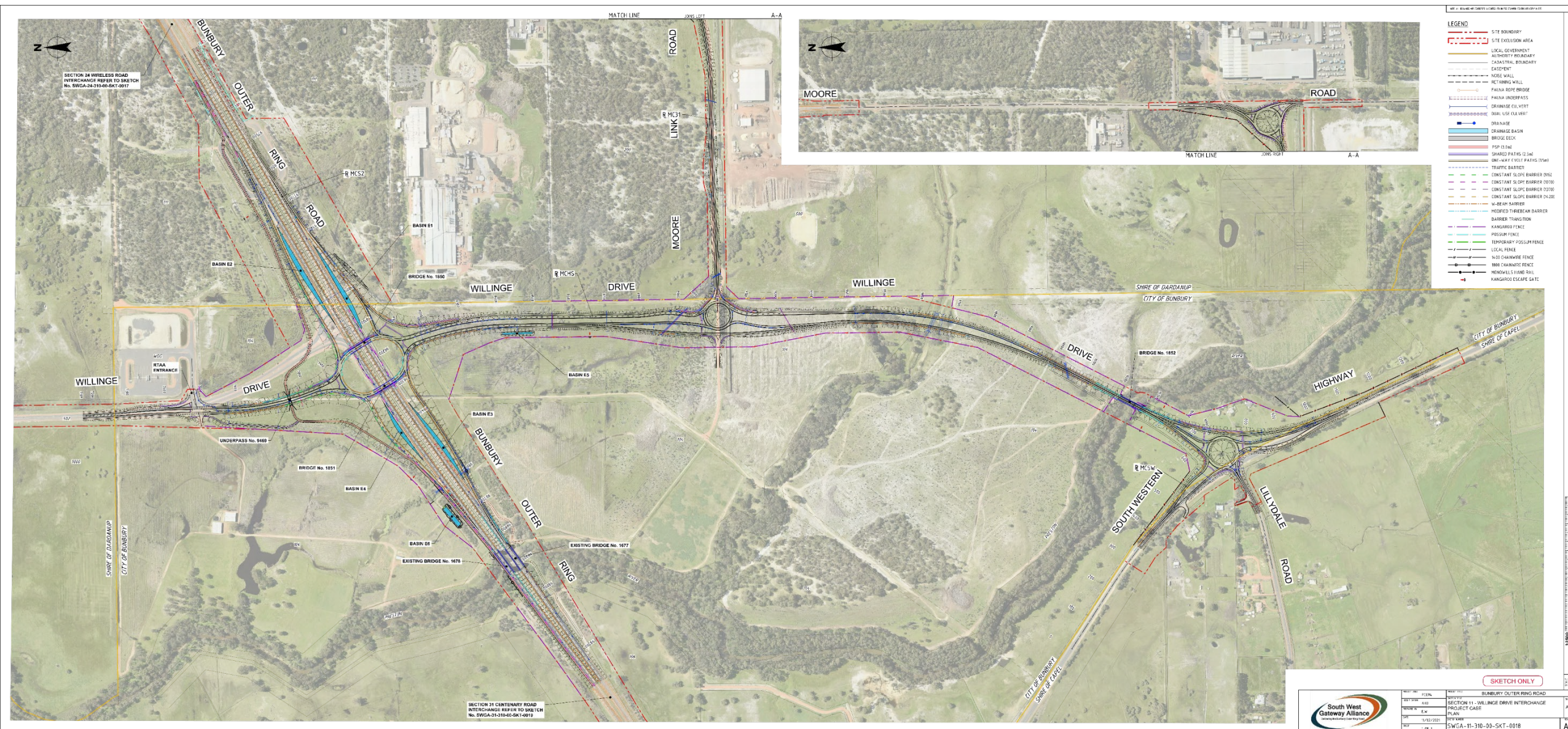
**WEATHER**

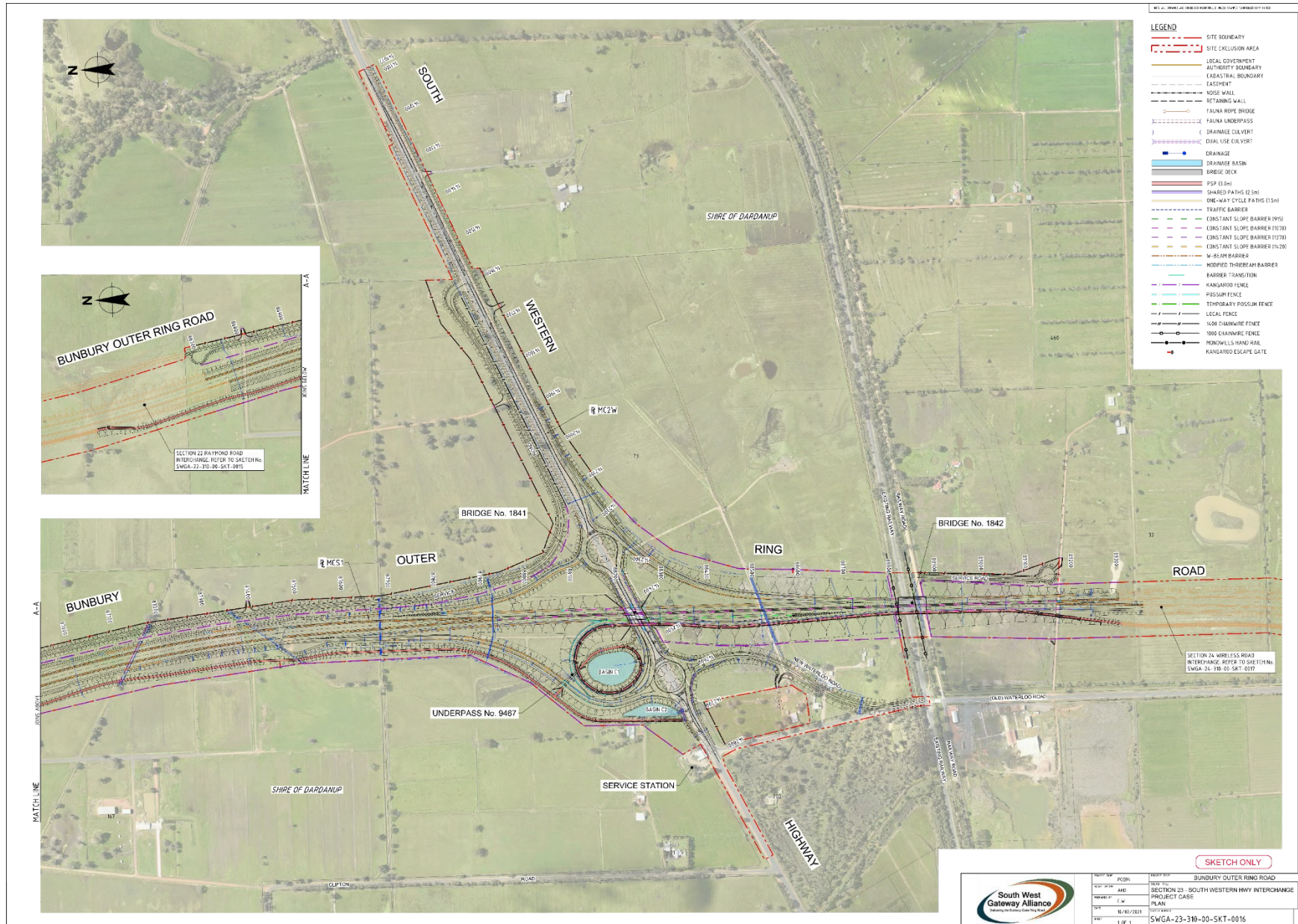
Winter months restrict access to low lying areas, and completion of pavement works

Initial works – Raymond Road

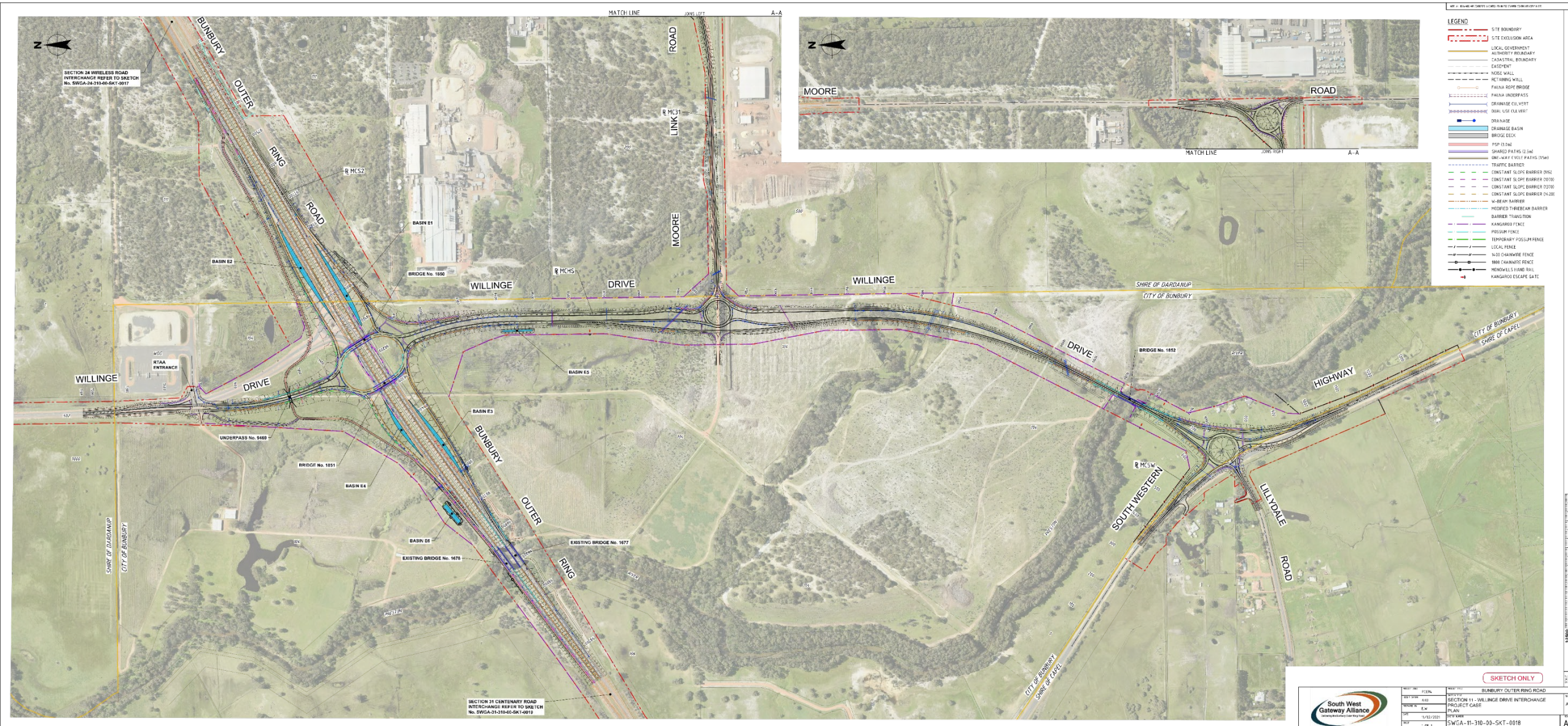


Initial works – Willinge Drive











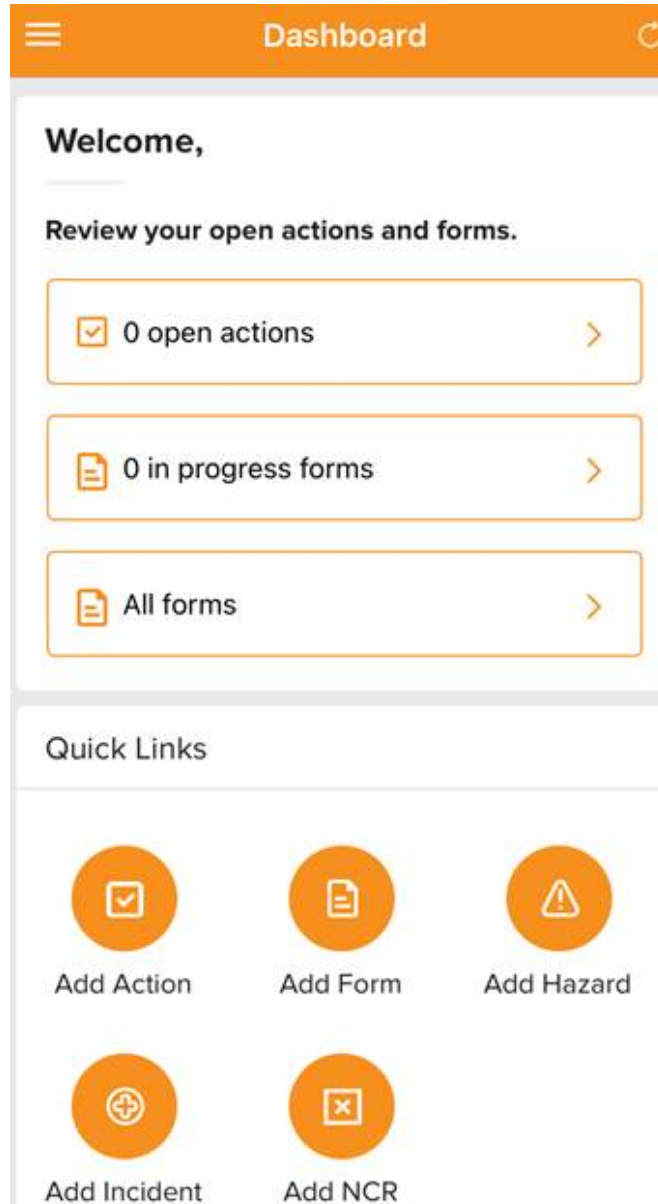
Australian Government



BUILDING OUR FUTURE

HSE Requirements

Matthew Allen | Health and Safety Manager



For team members joining the project, each employer will create a profile for their employee, upload required records and enrol each employee into the online project induction.

For plant and equipment being utilised on the project, each employer will create a profile for each asset, upload records before contacting the SWGA Plant Superintendent to initiate the inspection and approval process.

The Safety Management System used on the project is based on the Acciona Australia systems and meets the requirements of AS4801 and the Australian Government Building and Construction Work Health and Safety Accreditation Scheme.

System



Our system features a set of focus areas with specific Operating Minimum Controls (featured on the next slide) which are fundamental to managing critical risks.

Safe Work



Works will be planned with identification and management of risk through Safe Work Method Statements which will be reviewed and signed on to by each team member performing the works.

Good to GO



Each team member will also utilise the SWGA Good to GO personal assessment of the task as their final check before proceeding with the task.



South West Gateway Alliance
Delivering the Bunbury Outer Ring Road

BE SAFE. HOW SAFE.



GOD TO GO

Sustainability

Statement of Intent
This OMR serves to outline the minimum management controls undertaken by South West Gateway Alliance to maximise the sustainable outcomes and social, economic and environmental benefits during delivery of projects.

OMR Control Strategies

- 1.1 Foster sustainability awareness internally across project team members and externally with business partners and on supply chain, through all phases of a project life cycle.
- 1.2 Contribute to sustainable development through identification of social, economic and environmental risks and opportunities that affect our stakeholders.
- 1.3 Promote sustainable procurement processes that maximise social, economic and environmental benefits, including consideration of human rights impacts potentially embedded in supply chains.
- 1.4 Ensure workplaces offer safe and healthy working conditions that promote diversity and inclusiveness and are without discrimination.
- 1.5 Ensure a preventive approach to reducing the impact of our activities on the environment and our communities, which we operate, identify, monitor, review, review and report that maximise alignment of our activities with the risk and social and strategic priorities for South West Gateway Alliance.
- 1.6 Ensure a process for engaging with community and stakeholders is established, implemented and monitored.
- 1.7 Foster innovation as a core principle, connecting sustainable solutions at a technological, engineering and operational level.
- 1.8 Ensure reporting of social and environmental data in line with South West Gateway Alliance's sustainability strategy.

Temporary Works

Statement of Intent
This OMR serves to outline the minimum risk management controls undertaken by South West Gateway Alliance to prevent temporary works (e.g. formwork, false work, precast, shoring, back propping, temporary structures etc.) from falling or collapsing resulting in harm.

OMR Control Strategies

- 5.1 Temporary works must be risk assessed by competent persons with relevant experience and qualifications prior to use.
- 5.2 Temporary works must be identified, designed and independently verified appropriately qualified by a competent person prior to use.
- 5.3 Temporary works design must be certified as a minimum to identify its intended use, lifting configurations, installation, safe access and dismantling.
- 5.4 Appropriately qualified and competent persons, independent of the designer, must verify temporary works design prior to its use appropriate design must occur prior to its installation and loading.
- 5.5 Physical protection must be installed to prevent temporary works, where there is a risk of collision, or damage from operating plant or live traffic.
- 5.6 Temporary works changes must not occur without prior consultation by the designer, and where required, completion of revised certification and independent verification.
- 5.7 Temporary works must be regularly inspected by competent persons during installation, use, and dismantling.
- 5.8 Competent persons must be identified and appointed prior to use.
- 5.9 Competent persons must be identified and appointed prior to use.
- 5.10 Temporary works must be identified and appointed prior to use.

Chain of Responsibility

Statement of Intent
This OMR serves to outline the minimum risk management controls undertaken by South West Gateway Alliance to prevent heavy vehicle related incidents and injuries in accordance with relevant national law and as a part of the supply chain.

OMR Control Strategies

- 8.1 A Chain of Responsibility Management Plan must be developed prior to undertaking heavy vehicle transport activities deemed to be high-risk.
- 8.2 Incoming/Outgoing transport loads must have an accurate known weight must not exceed maximum dimension and mass limits based on the method of transport.
- 8.3 All heavy vehicles must be inspected, serviced and maintained in accordance with relevant standards.
- 8.4 Heavy vehicle operators must conduct a daily pre-start inspection prior to use.
- 8.5 Heavy vehicle operators must comply with South West Gateway Alliance delivery rules and regulations.
- 8.6 Prior to undertaking loading/unloading of material and equipment, vehicle Management Plans must be clearly identified and loading/unloading activities must be provided.
- 8.7 Vehicle Management Plans must clearly identify loading/unloading activities and be provided to the relevant parties.
- 8.8 Personnel responsible for loading material and equipment must be verified as competent for safe loading and have relevant products and equipment training and qualifications.
- 8.9 Vehicle Management Plans must be clearly identified and loading/unloading activities must be provided.
- 8.10 Vehicle Management Plans must be clearly identified and loading/unloading activities must be provided.

Plant, Traffic and People

Statement of Intent
This OMR serves to outline the minimum risk management controls undertaken by South West Gateway Alliance to minimise interaction between plant, people & traffic.

OMR Control Strategies

- 2.1 A Traffic Management Plan (TMP) must be developed, communicated and implemented when working in and around live vehicular traffic.
- 2.2 A Vehicle Movement Plan (VMP) must be developed, communicated and implemented when working in and around operating plant.
- 2.3 Designated pedestrian crossing points must be provided for all personnel and vehicles.
- 2.4 Designated pedestrian crossing points must be provided for all personnel and vehicles.
- 2.5 Designated pedestrian crossing points must be provided for all personnel and vehicles.
- 2.6 Designated pedestrian crossing points must be provided for all personnel and vehicles.
- 2.7 Designated pedestrian crossing points must be provided for all personnel and vehicles.
- 2.8 Designated pedestrian crossing points must be provided for all personnel and vehicles.
- 2.9 Designated pedestrian crossing points must be provided for all personnel and vehicles.
- 2.10 Designated pedestrian crossing points must be provided for all personnel and vehicles.

Isolation of Hazardous Energy

Statement of Intent
This OMR serves to outline the minimum risk management controls undertaken by South West Gateway Alliance to manage isolation of hazardous energy sources and to prevent harm.

OMR Control Strategies

- 6.1 All isolation and de-energisation of hazardous energy must be risk assessed, with the method for the removal and restoration of hazardous energy identified by a competent person prior to use.
- 6.2 A permit to work must be obtained and in place for the isolation and de-energisation of hazardous energy.
- 6.3 Isolation and de-energisation must be verified by a competent person prior to use.
- 6.4 Isolation and de-energisation must be verified by a competent person prior to use.
- 6.5 Isolation and de-energisation must be verified by a competent person prior to use.
- 6.6 Isolation and de-energisation must be verified by a competent person prior to use.
- 6.7 Isolation and de-energisation must be verified by a competent person prior to use.
- 6.8 Isolation and de-energisation must be verified by a competent person prior to use.
- 6.9 Isolation and de-energisation must be verified by a competent person prior to use.
- 6.10 Isolation and de-energisation must be verified by a competent person prior to use.

Excavation, Trenching and Services

Statement of Intent
This OMR serves to outline the minimum risk management controls undertaken by South West Gateway Alliance to prevent exposure to hazards during excavation and trenching activities and contact with live services.

OMR Control Strategies

- 10.1 All excavation and trenching activities must be planned and controlled in accordance with relevant standards.
- 10.2 All excavation and trenching activities must be planned and controlled in accordance with relevant standards.
- 10.3 All excavation and trenching activities must be planned and controlled in accordance with relevant standards.
- 10.4 All excavation and trenching activities must be planned and controlled in accordance with relevant standards.
- 10.5 All excavation and trenching activities must be planned and controlled in accordance with relevant standards.
- 10.6 All excavation and trenching activities must be planned and controlled in accordance with relevant standards.
- 10.7 All excavation and trenching activities must be planned and controlled in accordance with relevant standards.
- 10.8 All excavation and trenching activities must be planned and controlled in accordance with relevant standards.
- 10.9 All excavation and trenching activities must be planned and controlled in accordance with relevant standards.
- 10.10 All excavation and trenching activities must be planned and controlled in accordance with relevant standards.

Work at Heights

Statement of Intent
This OMR serves to outline the minimum risk management controls undertaken by South West Gateway Alliance to prevent the fall of a person from a height, and the risk of falling objects/materials.

OMR Control Strategies

- 3.1 For all scope of works, ensure effective control measures are implemented to prevent a person and/or object, falling from height.
- 3.2 Where a person is working at height, the hierarchy of controls must be applied to prevent a person and/or object, falling from height.
- 3.3 All edges, structures and working platforms must be protected via toe boards, guardrails and scaffolding systems to prevent falls from height.
- 3.4 All fall protection systems/structures must be installed, verified & inspected in accordance with manufacturer's instructions and relevant legislation, codes of practice and Australian Standards.
- 3.5 All fall protection systems/structures must be installed, verified & inspected in accordance with manufacturer's instructions and relevant legislation, codes of practice and Australian Standards.
- 3.6 All fall protection systems/structures must be installed, verified & inspected in accordance with manufacturer's instructions and relevant legislation, codes of practice and Australian Standards.
- 3.7 All fall protection systems/structures must be installed, verified & inspected in accordance with manufacturer's instructions and relevant legislation, codes of practice and Australian Standards.
- 3.8 All fall protection systems/structures must be installed, verified & inspected in accordance with manufacturer's instructions and relevant legislation, codes of practice and Australian Standards.
- 3.9 All fall protection systems/structures must be installed, verified & inspected in accordance with manufacturer's instructions and relevant legislation, codes of practice and Australian Standards.
- 3.10 All fall protection systems/structures must be installed, verified & inspected in accordance with manufacturer's instructions and relevant legislation, codes of practice and Australian Standards.

Electrical Work

Statement of Intent
This OMR serves to outline the minimum risk management controls undertaken by South West Gateway Alliance to manage electrical safety and prevention of electric shock.

OMR Control Strategies

- 7.1 Electrical work must only be carried out by competent licensed electrical workers and/or electrical engineers.
- 7.2 Electrical work must only be carried out by competent licensed electrical workers and/or electrical engineers.
- 7.3 Electrical work must only be carried out by competent licensed electrical workers and/or electrical engineers.
- 7.4 Electrical work must only be carried out by competent licensed electrical workers and/or electrical engineers.
- 7.5 Electrical work must only be carried out by competent licensed electrical workers and/or electrical engineers.
- 7.6 Electrical work must only be carried out by competent licensed electrical workers and/or electrical engineers.
- 7.7 Electrical work must only be carried out by competent licensed electrical workers and/or electrical engineers.
- 7.8 Electrical work must only be carried out by competent licensed electrical workers and/or electrical engineers.
- 7.9 Electrical work must only be carried out by competent licensed electrical workers and/or electrical engineers.
- 7.10 Electrical work must only be carried out by competent licensed electrical workers and/or electrical engineers.

Environment

Statement of Intent
This OMR serves to outline the minimum risk management controls undertaken by South West Gateway Alliance to prevent and minimise impacts to the surrounding environment and the community.

OMR Control Strategies

- 11.1 All construction activities must be planned and executed in accordance with the relevant standards, quality specifications and EIC changes.
- 11.2 All construction activities must be planned and executed in accordance with the relevant standards, quality specifications and EIC changes.
- 11.3 All construction activities must be planned and executed in accordance with the relevant standards, quality specifications and EIC changes.
- 11.4 All construction activities must be planned and executed in accordance with the relevant standards, quality specifications and EIC changes.
- 11.5 All construction activities must be planned and executed in accordance with the relevant standards, quality specifications and EIC changes.
- 11.6 All construction activities must be planned and executed in accordance with the relevant standards, quality specifications and EIC changes.
- 11.7 All construction activities must be planned and executed in accordance with the relevant standards, quality specifications and EIC changes.
- 11.8 All construction activities must be planned and executed in accordance with the relevant standards, quality specifications and EIC changes.
- 11.9 All construction activities must be planned and executed in accordance with the relevant standards, quality specifications and EIC changes.
- 11.10 All construction activities must be planned and executed in accordance with the relevant standards, quality specifications and EIC changes.

Lifting Operations

Statement of Intent
This OMR serves to outline the minimum risk management controls undertaken by South West Gateway Alliance to prevent the overturning/collapsing of a crane, loss of loads, persons struck/collided with from crane activity and contact with overhead powerlines.

OMR Control Strategies

- 4.1 Ensure all lifting operations are planned, managed and conducted by a competent person, including the commissioning and decommissioning of cranes.
- 4.2 Ensure all lifting operations are planned, managed and conducted by a competent person, including the commissioning and decommissioning of cranes.
- 4.3 Ensure all lifting operations are planned, managed and conducted by a competent person, including the commissioning and decommissioning of cranes.
- 4.4 Ensure all lifting operations are planned, managed and conducted by a competent person, including the commissioning and decommissioning of cranes.
- 4.5 Ensure all lifting operations are planned, managed and conducted by a competent person, including the commissioning and decommissioning of cranes.
- 4.6 Ensure all lifting operations are planned, managed and conducted by a competent person, including the commissioning and decommissioning of cranes.
- 4.7 Ensure all lifting operations are planned, managed and conducted by a competent person, including the commissioning and decommissioning of cranes.
- 4.8 Ensure all lifting operations are planned, managed and conducted by a competent person, including the commissioning and decommissioning of cranes.
- 4.9 Ensure all lifting operations are planned, managed and conducted by a competent person, including the commissioning and decommissioning of cranes.
- 4.10 Ensure all lifting operations are planned, managed and conducted by a competent person, including the commissioning and decommissioning of cranes.

Rail Safety

Statement of Intent
This OMR serves to outline the minimum risk management controls undertaken by South West Gateway Alliance to manage rail safety and to prevent harm while working on rail infrastructure.

OMR Control Strategies

- 9.1 All rail safety activities must be planned and controlled in accordance with relevant standards.
- 9.2 All rail safety activities must be planned and controlled in accordance with relevant standards.
- 9.3 All rail safety activities must be planned and controlled in accordance with relevant standards.
- 9.4 All rail safety activities must be planned and controlled in accordance with relevant standards.
- 9.5 All rail safety activities must be planned and controlled in accordance with relevant standards.
- 9.6 All rail safety activities must be planned and controlled in accordance with relevant standards.
- 9.7 All rail safety activities must be planned and controlled in accordance with relevant standards.
- 9.8 All rail safety activities must be planned and controlled in accordance with relevant standards.
- 9.9 All rail safety activities must be planned and controlled in accordance with relevant standards.
- 9.10 All rail safety activities must be planned and controlled in accordance with relevant standards.

Quality

Statement of Intent
This OMR serves to outline the minimum activities undertaken by South West Gateway Alliance to ensure that customer requirements regarding quality are achieved and that work is completed correctly the first time.

OMR Control Strategies

- 12.1 All construction activities must be planned and executed in accordance with the relevant standards, quality specifications and EIC changes.
- 12.2 All construction activities must be planned and executed in accordance with the relevant standards, quality specifications and EIC changes.
- 12.3 All construction activities must be planned and executed in accordance with the relevant standards, quality specifications and EIC changes.
- 12.4 All construction activities must be planned and executed in accordance with the relevant standards, quality specifications and EIC changes.
- 12.5 All construction activities must be planned and executed in accordance with the relevant standards, quality specifications and EIC changes.
- 12.6 All construction activities must be planned and executed in accordance with the relevant standards, quality specifications and EIC changes.
- 12.7 All construction activities must be planned and executed in accordance with the relevant standards, quality specifications and EIC changes.
- 12.8 All construction activities must be planned and executed in accordance with the relevant standards, quality specifications and EIC changes.
- 12.9 All construction activities must be planned and executed in accordance with the relevant standards, quality specifications and EIC changes.
- 12.10 All construction activities must be planned and executed in accordance with the relevant standards, quality specifications and EIC changes.

Procurement process and requirements

Matt Prendergast | Commercial & Project Support Manager

Rob Barker | Project Controls & Procurement Manager

Bunbury Outer Ring Road (BORR) will provide an alternative route around Bunbury and separate local and regional traffic. BORR will be built in three sections:

Northern Section - Forrest Highway to Boyanup Picton Road

- Interchanges will be constructed at Forrest Highway, Raymond Road, South Western Highway, Waterloo and Willinge Drive.
- There will be a full connection at South Western Highway, providing better access for Bunbury CBD and Ferguson Valley.

Central Section - Boyanup Picton Road to South Western Highway

- Completed in May 2013, the four-kilometre Central Section included the extension of Port Access Road (Willinge Drive).
- Willinge Drive, one of the larger interchanges, will provide access to Bunbury Port. We're also planning to extend Willinge Drive to South Western Highway, providing new access for the timber industry.

Southern Section - South Western Highway to Bussell Highway

- The Southern Section will include interchanges at Bussell Highway and Centenary Road, and a connection to Jules Road.

Check out our latest [video](#) for a visualisation of the project and the benefits and opportunities for the region.

27 km
key transport corridor

Supporting
growth of the region

Safer
local roads

▼ What's happening

▼ Benefits

▼ Timeline

▼ FAQs

▼ Project history



**Subscribe to
project updates**

Subscribe to our email list for the latest project updates and announcements.

Subscribe



Maps & Designs

[Learn more »](#)

**Register your
business**

Express your interest to work with us and hear about the latest business opportunities

Register

Click through
to web form

<https://www.mainroads.wa.gov.au/borr>



Mandatory questions regarding local South West and Aboriginal business content

Business ownership

Business details

Business services

Close

Adobe PDF file

User Agreement

RESPONSIBLE SUPPLIERS DECLARATION ACCIONA GROUP

ACCIONA's main objective with its suppliers, contractors, subcontractors, including but not limited to companies, corporations, temporary or long-term joint ventures, etc., is to establish stable and long-lasting relationships of cooperation, in secure digital environments, based on honesty, transparency and trust, to minimize the risk of breaches, ensure regulatory compliance, in particular but without limitation, concerning matters relating to ethical conduct and integrity, and to reduce the company's environmental footprint. All of this while guaranteeing the supply of goods and services with the highest standards. ACCIONA is committed to ensure the company, its employees and its supply chain in a commitment to Ongoing Improvement, and to include Society as an affected party and stakeholder.

Since joining the United Nations Global Compact, ACCIONA has undertaken the challenge of phasing in the ten Universal Principles on which the Compact is based in conducting its daily business, and of notifying its stakeholders with the utmost transparency and objectivity with regard to its progress in this connection.

Through this document, we aim to convey to you our commitment to these principles and share them with you, recommending that you join the UN Global Compact and adopt our management system for corporate social responsibility practices.

The ten principles of the Global Compact (www.unglobalcompact.org) are:

Human Rights

Principle 1: Businesses should support and respect the protection of internationally proclaimed human rights, within their scope of responsibility.

Principle 2: Businesses should make sure that they are not complicit in human rights abuses.

Labor

☐ I agree

☐ I do not agree

GENERAL TERMS AND CONDITIONS OF USE OF THE PLATFORM AND ACCEPTANCE THEREOF

These Terms and Conditions regulate the use of the PROCUR-e Platform (hereinafter, the "Platform" or "PROCUR-e").

The access to PROCUR-e is subject to the prior reading and acceptance by the User of the terms, conditions, communications, warnings and other legal notices contained in this document. Any person accessing or using PROCUR-e shall be considered a User. The User status means the express, full and unreserved acceptance of these General Terms and Conditions of Use.

If the User should disagree with the content of these General Terms and Conditions of Use he/she may not access the Platform.

Likewise, the User expressly and without exception accepts that the access and use of PROCUR-e, its services and the content of such services shall be done under his/her sole and exclusive liability.

The access to the Platform is free of charge and its use requires logging into the system under a username and a password.

ACCIONA may unilaterally modify, at any time deemed appropriate, the configuration of PROCUR-e, the conditions of service and standard content thereof, as well as remove, restrict or suspend these temporarily or definitively, as well as prevent access thereto.

Budget pricing and early works packages

Budget Pricing	Early works packages
	OH&S <ul style="list-style-type: none"> • Drug testing / Medical services/Medical centre/GP support • Firefighting equipment supply • PPE provider
Environment and Heritage <ul style="list-style-type: none"> • Materials Testing/Geotechnical • Contamination Treatment/Auditing • Recycling/Waste Management 	Environment and Heritage <ul style="list-style-type: none"> • Groundwater monitoring • Environmental monitoring equipment and services (noise/dust/vibration) • Fauna/Flora management / Flora surveys/dieback mapping and management • Property condition surveys • Aboriginal Cultural Heritage/Heritage investigations • Materials Testing/Geotechnical
Mobilisation works <ul style="list-style-type: none"> • Site shed construction • Crane hire • Site works/Site fencing • Security services 	Mobilisation works <ul style="list-style-type: none"> • Site shed construction • IT/Communications/Electrical services/Cleaning/Plumbing/Water supply • Office fit out/furniture • Site works/Site fencing/Security services • Accommodation
Construction <ul style="list-style-type: none"> • Concrete supply/Concrete reinforcement materials/Precast/Kerbing • Signage supply and installation • Landscaping services • Street lighting supply and installation • Painting and line marking • Asphalt and bitumen seal • Piling • Material (earthworks) supply/Drainage/Culverts • Road furniture/guard railing • Noise walls/Retaining walls 	Construction <ul style="list-style-type: none"> • Signage supply and installation • Demolition • Plant hire • Surveying • Training and Recruitment • Fuel supplies • Service location/relocations • Clearing/mulching • Construction water services/water carting/dewatering • Traffic management



Evaluation criteria



Commercial terms



Health and safety



Sustainability



Quality

Consideration of local and Aboriginal workforce and business during construction.

Promote heritage values (Aboriginal and European).

Community and stakeholder trust and support.

Reduce clearing of native vegetation and fauna habitat, with particular focus on high value areas, and seek to improve ecological outcomes.

Minimise changes in water flow and flooding.

Appropriate material sourcing and reduction.

Appropriate water sourcing and reduction.

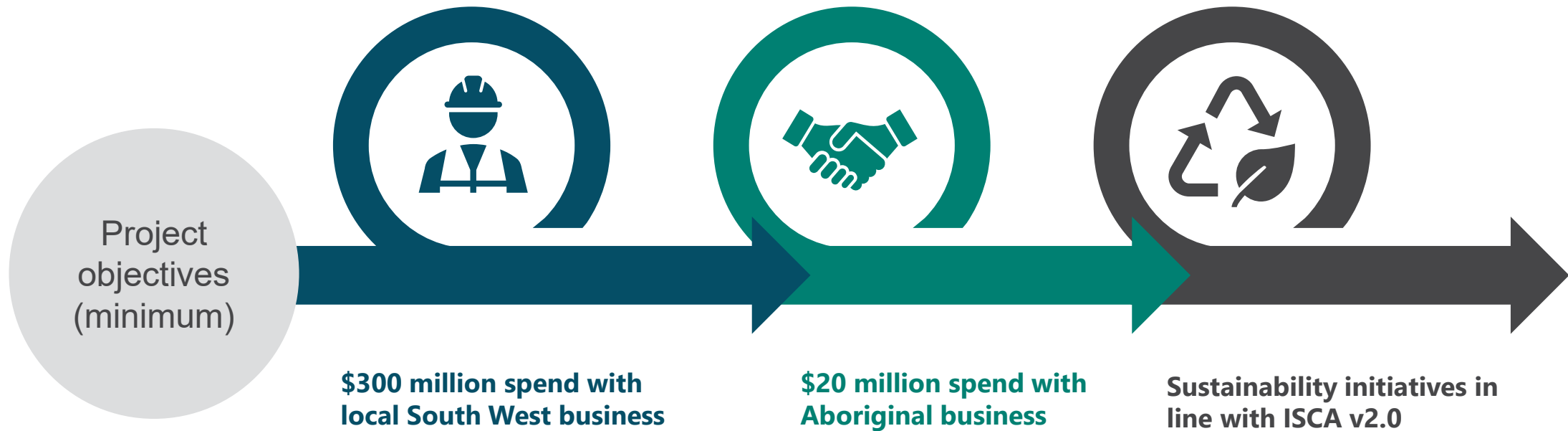
Minimise waste generation and maximise reuse and recycling at this project and others nearby.

Consider safety of all users, constructors and maintenance workers.

Reduce energy and emissions.

Consideration of climate change and natural hazards.

Maximise network efficiency for all users (vehicles, freight, cyclists, pedestrians)



uWorkin opportunities


Nicole Walton | Community & Stakeholder Engagement Manager

Project-based
'talent
community'

Jobs can also be
posted directly
to the site

uWorkin
aggregates jobs
from different
employment
platforms

Indigenous
Talent
Community



JOIN THIS COMMUNITY

Search Jobs

Search Training

Title, industry or company

Industry

Distance from location (kms)
Exact 5 10 25 ☒ 50 100

Posted since
All 2 Days 1 Week 2 Weeks ☒ 1 Month

Sort results by
☒ Relevance Date

GO

RESULTS

1 to 20 of 326 JOBS MATCHING "ALL JOBS" IN "Any Industry"

JOB ALERTS
Receive the latest jobs for this search via email **Create Alert**

23 FEBRUARY	Farm Labourers - Fruit Picking Private Company - Busselton, WA Our client requires up to 90 reliable and physically fit farm workers for fruit picking in the Busselton area Must be a... Source: uWorkin	Private Company	DETAILS ★ Shortlist Job
22 FEBRUARY	Rigger STELLAR RECRUITMENT - Bunbury, WA RiggerLocal hire in the Bunbury AreaMonday - Friday work potential of 1 2 day Saturday overtime About the Company Our c... Source: uWorkin	STELLAR RECRUITMENT	DETAILS ★ Shortlist Job
22 FEBRUARY	Furniture Salesperson Harvey Norman - Busselton, WA Job no 533646Work type Part TimeLocation BusseltonCategories Retail SalesPart time plus additional hours as required...	Harvey Norman	DETAILS ★ Shortlist Job

<https://www.uworkin.com/search-results?suburb=Bunbury&postCode=6230&industryId=0&page=1&daysToSearch=7&sort=relevance&distance=50&state=WA#se>

How do job recruiters access opportunities for profiling their services?

As part of the project, we are adding **"Employer Profiles"** and **"Partner Profiles"**.

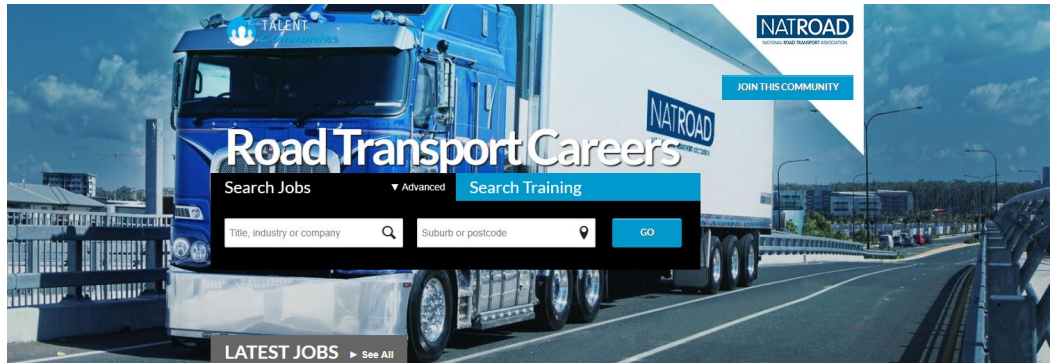
Employer Profiles

These will enable employers to showcase their Employer Value Proposition.

The profile pages appear in a directory and are automatically attached to live job roles.

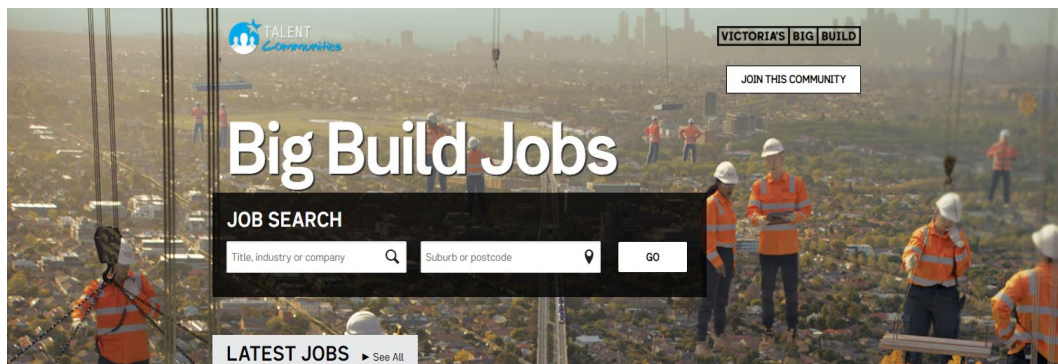
Partner Profiles

Recruiters who have services to offer or Industry bodies.



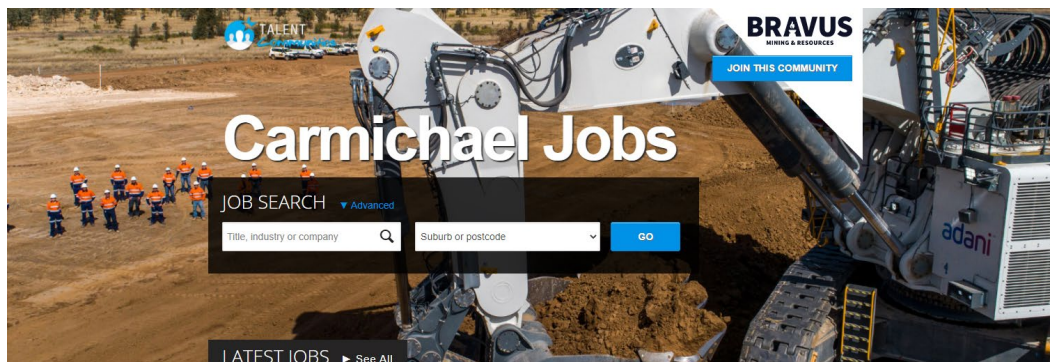
NATROAD

<https://www.roadtransportcareers.com.au/>



BigBuildJobs

<https://jobs.bigbuild.vic.gov.au/>



Carmichael Jobs

<https://www.carmichaeljobs.com.au/>



Create an Air CV profile



Search jobs pool




Select and apply

Three cohorts
currently running
(SW Tafe, ATC,
Skill Hire)

Four week
program

+/-30
graduates



SWGGA can facilitate
introductions if you are
interested in taking on
trainees from this program.



Australian Government



mainroads
WESTERN AUSTRALIA

BUILDING OUR FUTURE

Thankyou