



This update contains information regarding the current and future works happening on the Bunbury Outer Ring Road (BORR) project. Information in this update is current as of May 2023 and is subject to change. For the most recent updates visit the Main Roads BORR website or visit the Bunbury Outer Ring Road Community Facebook Group.

Project update

In May, there has been significant activity at the Raymond Road interchange, with all service line relocations now complete and preparations beginning for the next traffic switch. For more details on the work occurring at this location, check out the story below.

In the southern section of the project, foundation preparation works have begun. Other activities onsite include topsoil stripping, embankment construction and 'cut to fill'. This is the process of excavating sand from the location of the future road, to 'cut' it down to the specified height. This sand is then available to be used at other locations as required.

The Bunbury Outer Ring Road (BORR) is tracking at over 45 per cent completion, and with the arrival of colder and wetter weather, work has shifted to prioritise preparing the construction sites for these winter conditions.



Activities onsite at the Raymond Road interchange

Top deck – pouring concrete for the Raymond Road bridge deck

The project recently achieved a significant milestone by installing the first set of tee-roff beams at the Raymond Road interchange.

Following this installation, approximately 100 tonnes of reinforced steel was fixed to the beams in preparation for the bridge deck concrete pour.

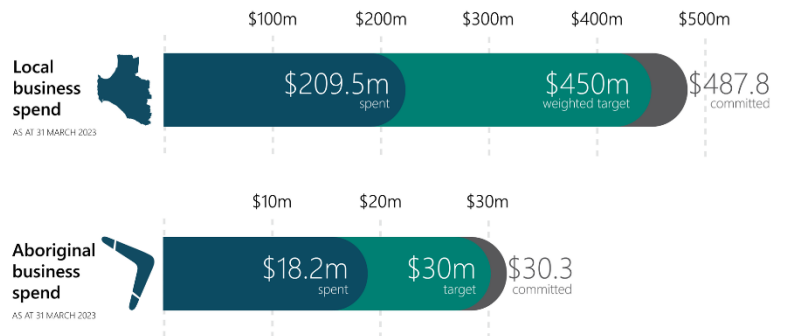
[Click here to learn more.](#)



Benefits of BORR reaching local and Aboriginal businesses within the South West

The project is exceeding local commitment targets, with contracts firmly focused towards South West businesses.

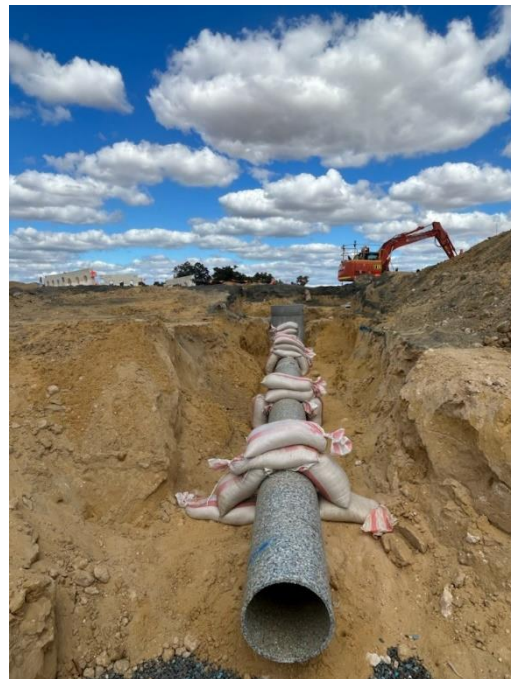
[Click here to learn more.](#)



How BORR's 'Green Pipes' are paving the way for Main Roads Western Australia

At the construction site near the Discovery Road intersection, a new type of pipe is being installed that is more sustainable and environmentally friendly. They're made from 100% recycled plastic bottles, almost entirely from used household milk and juice bottles.

[Click here to learn more.](#)



Unveiling the 'mega-bridge' artwork

The latest artwork design is nearing completion, with the new piece designed by local artist Andrew Frazer which will be located on the piers at the 'mega-bridge'.

[Click here to learn more.](#)



BORR prepares for the next phase of bridge beam installation

The project is gearing up for another major milestone with the next round of bridge beam installations to occur at the Paris Road and Clifton Road, and South Western Highway (north) interchanges.

[Click here to learn more.](#)



For more information on the Bunbury Outer Ring Road

If you have any questions, please contact **138 138** or email enquiries@mainroads.wa.gov.au.