



Australian Government



## PROJECT UPDATE

February 2023

# Bunbury Outer Ring Road



Bridge beam lift at Raymond Road interchange

**This update contains information regarding the current and future works happening on the Bunbury Outer Ring Road (BORR) project. Information in this update is current as of February 2023 and is subject to change. For the most recent updates visit the Main Roads BORR website or visit the Bunbury Outer Ring Road Community Facebook Group.**

### Project update

Construction of the Bunbury Outer Ring Road project is now 38% complete.

In early February, Paris Road was closed to begin the next stage of construction on the Paris/Clifton Road interchange. Stockpiling of fill and service relocations are now underway.

The first bridge beam lift at the Raymond Road interchange was also recently completed. The first set of 12 'tee-roff' bridge beams were successfully installed across two days with each beam measuring 26 meters long, 1.3 metres high, and weighing more than 80 tonnes.

Paving on the main alignment has also started, marking a significant project milestone.



Bridge beams being installed at Raymond Road construction site



## BORR goes green

In January, our main project office in Picton became powered by 100 per cent renewable energy and further reduced our carbon footprint. Solar-powered lighting has also recently been installed in the car park. Sustainability is a key consideration across all construction project stages, with the project aiming to receive a silver rating from the Infrastructure Sustainability Council.



[Click here to learn more.](#)

## Planting the seed with native seedlings in the local community

More than 450 native seedlings have been distributed to local schools and community members in the Bunbury region to support further revegetation. 50 native species of seedlings were available including Eucalyptus and Melaleuca.

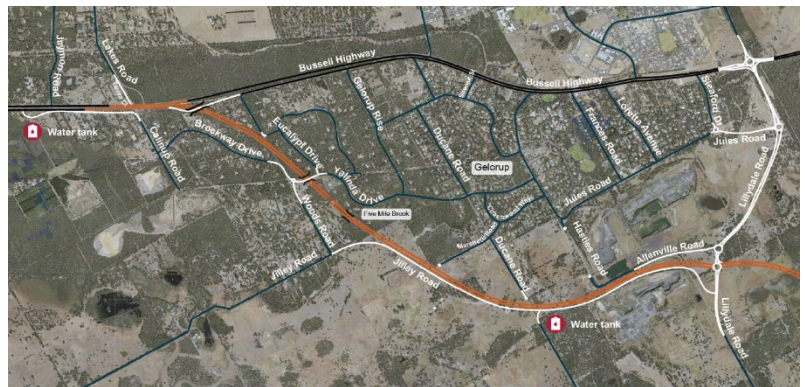


[Click here to learn more.](#)

## Understanding access for emergency services

To improve critical water supplies for firefighters during emergencies, two new 50,000-litre water tanks and bores will be installed at Calinup Drive and Ducane Road.

The design of the water tank facilities has been improved based upon consultation with DFES and the Shire of Capel.



[Click here to learn more.](#)

## For more information on the Bunbury Outer Ring Road

If you have any questions, please contact **138 138** or email [enquiries@mainroads.wa.gov.au](mailto:enquiries@mainroads.wa.gov.au).