

Bunbury Outer Ring Road



Bridge panels and centre piers at the Bunbury Outer Ring Road and Forrest Highway interchange

This update contains information regarding the current and future works happening on the Bunbury Outer Ring Road (BORR) project. Information in this update is current as of December 2022 and is subject to change. For the most recent updates visit the Main Roads BORR website or visit the Bunbury Outer Ring Road Community Facebook Group.

Project Update

Construction on the Bunbury Outer Ring Road project is now over 35% complete. In 2022, we have achieved several major milestones across the alignment.

At the Paris/Clifton Road interchange, both bridge abutments have been completed with mechanically stabilised earth (MSE) walls. Further south at the Raymond Road interchange, the embankments and centre piers have been finalised, ready for the installation of the 'tee-roff' bridge beams early next year. At Golding Crescent, the first section of the new local road network has opened for use by the public.

Check out this video to see what we've been up to for the last year, following the BORR alignment from north to south.

Next year, work will continue to accelerate as we commence our first season of paving and reach peak activity on-site.

Major works continue on the 'mega-bridge'

Piling works have been progressing well at the 'mega-bridge', which will take BORR over Golding Crescent, the Ferguson River, the freight rail line, and Boyanup-Picton Road. The bridge will be 382 metres long, making it the longest in the South West region of Western Australia.

[Click here to learn more.](#)



The Yaka Dandjoo program celebrates 100 graduates

Just one year on from its initial launch, the Yaka Dandjoo 'Sustainable Employment' program has seen its seventh cohort and 100th participant graduate.

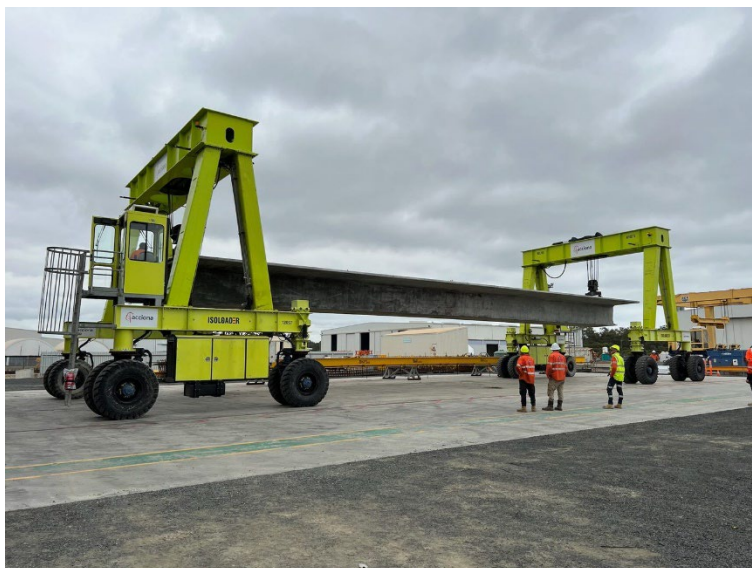
[Click here to learn more.](#)



The pre-cast yard comes to life

Construction has finished and production has started at the new pre-cast yard for the BORR project. This is a purpose-built facility in Picton East that will produce 'tee-roff' bridge beams.

[Click here to learn more.](#)



Roadworks update

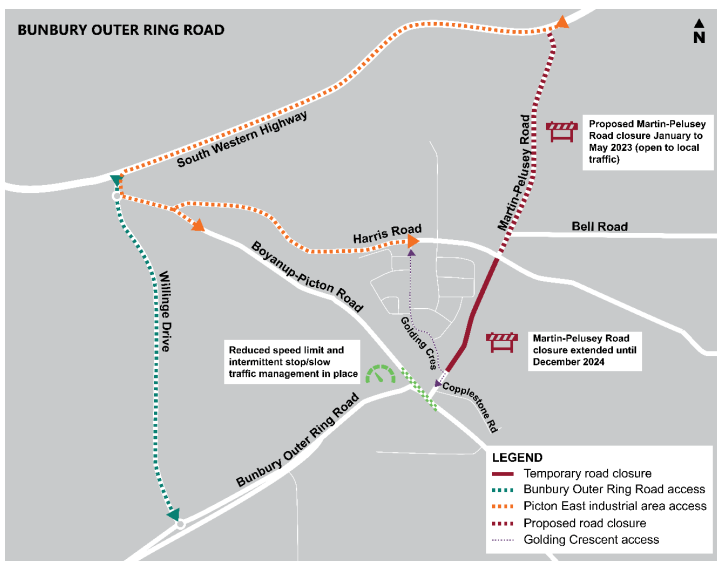
There have been several changes to traffic conditions in the Picton East industrial area.

Golding Crescent reopened at the start of December to Picton East industrial area traffic. The new Golding Crescent is a permanent road that forms part of the final Bunbury Outer Ring Road network.

The closure of Martin-Pelusey Road between Harris Road and the Golding Crescent roundabout will be extended until December 2024.

To improve safety, Main Roads is proposing to carry out a separate project which involves upgrading the intersection of South Western Highway and Martin-Pelusey Road. This closure is pending approval from the Shire of Dardanup. If approved, Martin-Pelusey Road will also be closed between South Western Highway and Harris Road from January 2023 until May 2023. An update on this potential closure will be provided in due course. Martin-Pelusey Road will remain accessible to local traffic only during this closure.

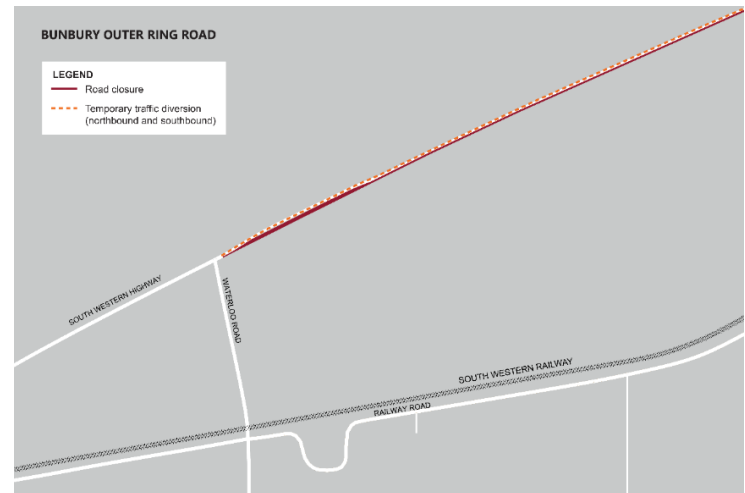
Barrier and bridge piling works have begun in this region and there will be a reduced speed limit of 60km per hour along Boyanup-Picton Road. There will also be intermittent closures or 'stop/slow' conditions along Boyanup-Picton Road. These changes are planned to remain in place for 12 months, until December 2023.



Map One

Map One details the extent of all planned road closures and associated diversions in this area.

We also have some changes to traffic conditions along South Western Highway in Waterloo. Traffic will need to move onto a temporary diversion road to enable the construction of the future South Western Highway interchange (north). On Monday, 19 December the team will be completing out-of-hours works (7pm to 7am) to finish constructing the switch. Following this, northbound and southbound traffic will be switched onto the temporary lanes.



Map Two

Christmas Shutdown Period

Our project sites will shut down from Wednesday, 22 December 2022 until Wednesday, 4 January 2023. No work will occur during this time. The Community Hub will also be closed during this period.

Exposed sandy areas will be treated with a dust suppressant.

Should you experience any issues over the break, please contact 138 138 or email

enquiries@mainroads.wa.gov.au. We will have a team on call to address any concerns.

For more information on the Bunbury Outer Ring Road

If you have any questions, please contact **138 138** or email enquiries@mainroads.wa.gov.au.