



Albany Ring Road



The Albany Ring Road will enhance freight efficiency, relieve congestion and improve safety on existing roads for residents and visitors to Albany. The \$175million project will also inject critical investment into our local economy, providing opportunities for local businesses and wider benefits to the region.

Despite current economic uncertainty, project development and procurement have progressed to schedule. In March 2020, detailed proposals were sought from three shortlisted contractors for the design and construction of the Albany Ring Road. These proposals will be submitted to Main Roads by the end of May to enable a preferred proponent to be named in July.

We anticipate construction of the project will begin in the third quarter of 2020 subject to environmental and other approvals being obtained.

Project Design Update

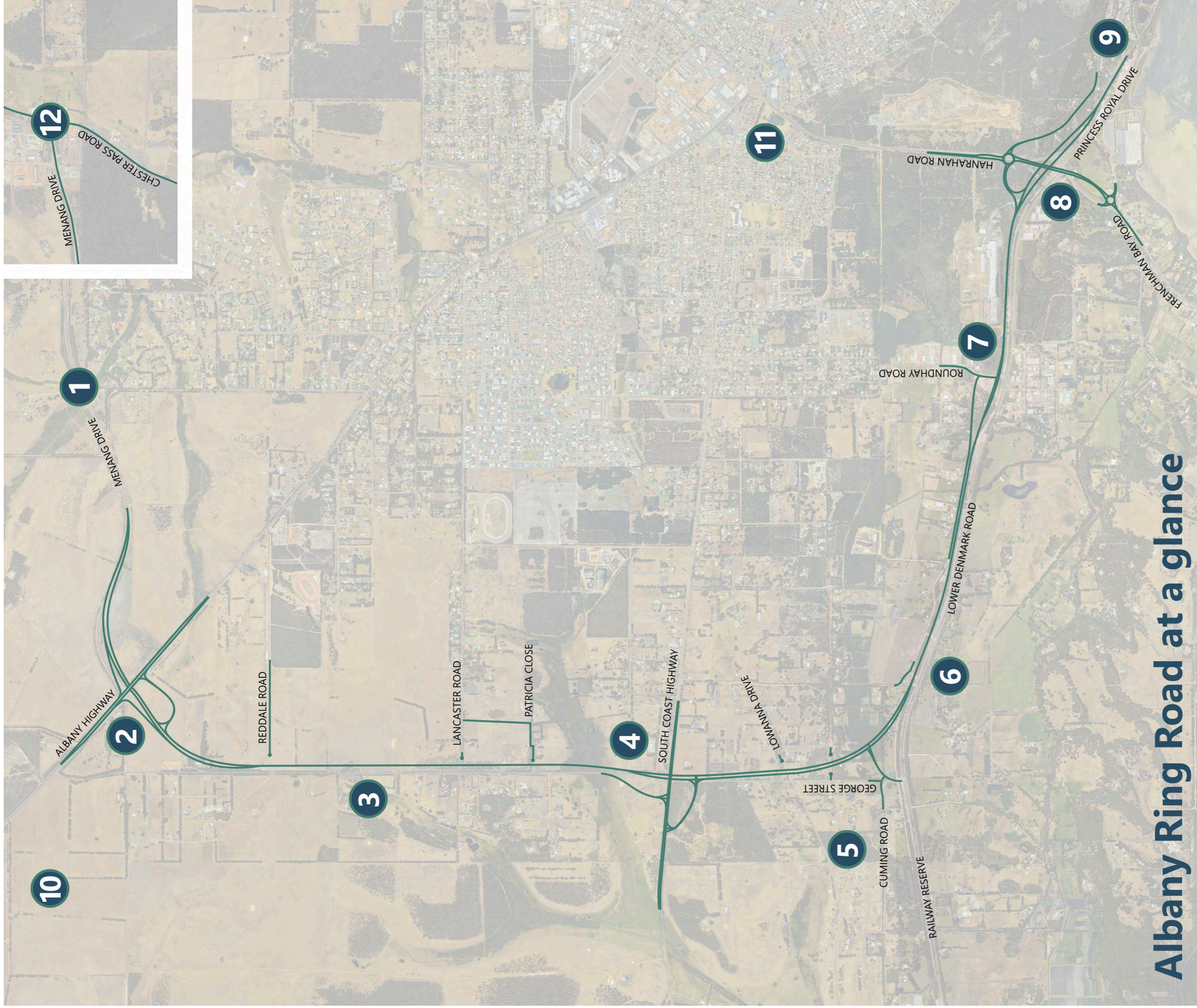
Albany Ring Road will link the existing major roads and highways radiating from Albany. It will bypass urban areas and improve access to the Mirambeenaa Strategic Industrial Area.

The project will improve traffic flow on the existing network by reducing the number of heavy vehicles on existing routes, which will in turn relieve congestion and enhance safety outcomes for local and tourist traffic.

The Albany Ring Road project is being jointly delivered by the Australian (\$140 million) and State (\$35 million) Governments

The key design features of the 11.5km connection from Albany Highway to Princess Royal Drive have been agreed and have been incorporated into the contract for delivery by the contractor. Following extensive engagement with key stakeholders, including the freight industry, these features include grade separated (bridged) interchanges at the intersections of:

- Albany Highway and Menang Drive;
- Albany Ring Road and South Coast Highway;
- Albany Ring Road, Hanrahan Road and Frenchman Bay Road, and;
- Frenchman Bay Road and the railway.



Albany Ring Road at a glance

- 1** Stage 1 of the ARR: Chester Pass Road to Albany Highway: Completed in 2007
- 2** Albany Highway Interchange: New bridge with Albany Highway passing over the ARR. Free flowing connectivity provided between the two roads.
- 3** ARR runs adjacent to Link Road between Albany Highway and South Coast Highway. Link Road retained for local connectivity west of the ARR.
- 4** South Coast Highway Interchange
Connections to Cumming Road, George Street and Lower Denmark Road
- 5** New alignment between rail freight corridor and Old Elleker Road
- 6** Connection to Roundhay Street
- 7** Hanrahan Road / Frenchman Bay Road Interchange, with connections to existing bike trails and paths
- 8** Connection to Princess Royal Drive through to Albany Port
- 9** Improved access to the Miramabeena Strategic Industrial Area
- 10** Removes conflict between freight and light vehicles at the Chester Pass Road roundabout, the Albany Central Business District and populated residential areas
- 11** Menang Drive and Chester Pass Road intersection upgrade subject to investigation
- 12**

The section of the Albany Ring Road between Albany Highway and South Coast Highway will run parallel to Link Road, which will continue to serve as a north-south connection for local traffic west of the Albany Ring Road. A local access strategy to address alternative access arrangements has been developed. You can see the latest concept map (overleaf) and an animation is accessible via our website (details below).

Building the Albany Ring Road

The Albany Ring Road will be built in stages over the next three years:

- The first stage of the connection to get underway will be the new interchange at Albany Highway and Menang Drive, and construction of the section of the Ring Road south to Lancaster Road. The majority of this work can take place away from existing roads and is not expected to cause significant disruption to motorists or the local community.
- Concurrently, we will ask our contractor to prepare detailed designs for the remaining sections of the project from Lancaster Road through to Princess Royal Drive.
- Upon completion of this detailed design, the second stage of construction, from Lancaster Road to South Coast Highway will take place.
- Timing of the final stage of construction, from South Coast Highway to Princess Royal Drive is subject to State and Federal Environmental Approvals.

What's next?

We are currently preparing an Environmental Referral to the WA Environmental Protection Authority and the Commonwealth Department of Environment and Energy to assess the environmental impacts of the section of the project from South Coast Highway to Princess Royal Drive.

Albany Ring Road is being designed to minimise environmental impacts. More than 80 per cent of the project is located on cleared land however,

we continue to liaise closely with local environment groups to ensure their feedback is incorporated into the design of the project wherever possible. An Environmental Reference Group has been formed to ensure the emerging detailed designs address environmental concerns and identify possible opportunities.

Working with the Community

The Albany Ring Road project continues to attract strong amounts of interest and support from the community, local businesses, the freight industry, and from people who visit Albany on a regular basis.

We thank all those who have participated in the engagement process to date, particularly those organisations that attended our Stakeholder Workshop in September 2019 and community members who visited us at the Albany Show.

While the COVID-19 pandemic has changed the way we interact with the community in recent months and limited the opportunity for face-to-face contact, we remain committed to providing ongoing updates about the project and opportunities for local people to get involved wherever possible.

Between now and late 2020, we will continue to liaise closely with residents, industry, businesses and amenity groups to ensure there is a strong understanding of the project before construction begins.

Construction Reference Group – Expression of Interest

We will shortly be forming a Construction Reference Group (CRG), comprising approximately 15 local residents from suburbs adjacent to the Albany Ring Road alignment. The group will meet with our project delivery team on a quarterly basis for the duration of the detailed design and construction period and provide ongoing feedback into the detailed design and the management of construction.

To register your interest in participating on this group, please contact us via email

or via telephone. We will be seeking participants that meet the following criteria:

- Have a residence located close to the project site and be able to represent the interests of others in the same areas
- Have lived in the area for a significant period of time
- Understand and have the capacity to voice the issues, concerns and views of community members
- Be able to represent a ratepayer group, progress group or community group/association
- Be available for after-hours meetings in Albany on (approximately) a quarterly basis
- Accept the CRG role and associated tasks, and
- Have access to email and internet for contact and correspondence.

How to apply

Please address the above criteria in writing to enquiries@mainroads.wa.gov.au

Please include "ARR CRG nomination" in the subject line.

No more than one A4 page is required.

Nominations close on 30 June 2020.

Want more Information?

Project information is available at www.mainroads.wa.gov.au/projects by emailing enquiries@mainroads.wa.gov.au or phoning 138 138. You can also register for project updates by heading to our project page and subscribing for email updates.

This document can be provided in alternative formats upon request

www.mainroads.wa.gov.au



☎ 138 138

✉ enquiries@mainroads.wa.gov.au

🌐 www.mainroads.wa.gov.au