

Tonkin Highway Extension & Thomas Road Upgrade



Tonkin Highway is being extended from Thomas Road to South Western Highway south-east of Mundijong. The \$755 million project is jointly funded by the Australian (\$604 million) and Western Australian (\$151 million) Governments. \$290 million is also allocated to upgrade Thomas Road, bringing the total funding commitment to \$1.045 billion.

Additional connectivity and safety improvements for Tonkin Highway

Perth's south-eastern corridor is being enhanced further, with not only the Tonkin Highway Extension project planned, but also the duplication of Thomas Road east of Tonkin Highway to South Western Highway, grade-separation of Thomas Road and Tonkin Highway, and additional pedestrian, cyclist and equine connectivity.

The south-east corridor is an important and fast-growing area, with Byford, Armadale, Kelmscott and Gosnells faced with large volumes of heavy vehicles and other through traffic travelling to and from the South West and Wheatbelt regions.

The extension of Tonkin Highway to South Western Highway will reduce traffic pressure and travel times for private and freight traffic, improve road connectivity between current and future residential, business and employment precincts, and improve safety.

The upgrade of Thomas Road will address traffic congestion, improve road safety and cater for the growing population east and north of Byford.

The two projects will complement the nearby METRONET Byford Rail Extension, Thomas Road Over Rail, and Thomas Road Safety Improvements between Kwinana Freeway and South Western Highway.

Tonkin Highway Extension project

As part of development work undertaken over the past two years, the Tonkin Highway Extension project now includes:

- 14km extension of Tonkin Highway from Thomas Road to South Western Highway as a four-lane dual carriageway
- Underpass at Abernethy Road (road, pedestrian, cyclist, equine)
- Roundabouts at Orton Road, Mundijong Road and South Western Highway
- Underpass at Gossage Road (equine)
- Interchange at Bishop Road and Tonkin Highway (grade separation)
- Bridge over Wright Road and rail line
- Underpass at Shanley Road (*road, other mode types under investigation*)
- Principal Shared Path (PSP) running the full length of the Tonkin Highway project on the eastern side with connections to local path networks
- Also being considered but currently under investigation:
 - Upgrade to the Abernethy Road and Hopkinson Road intersection
 - Upgrade to the Tonkin Highway, South Western Highway, Jarrahdale Road and Shanley Road intersection
- See overleaf for map.

The additional scope items have resulted in revised timings for the project to allow for further development work and mitigation of project risks. Activities underway include:

- Incorporating new scope into the project's base case design
- Additional traffic modelling
- Additional geotechnical investigations
- Further groundwater monitoring
- A Noise Study to determine height and location of noise walls, and a Visual Screening Assessment
- Road Safety Audits and reviews
- AusRAP Road Safety Assessment and Star Rating
- Finalising the Access & Connectivity Strategy including Fire & Emergency access and egress

- Engaging service providers (Western Power, Water Corporation etc) to determine requirements
- Updating the Urban Design & Landscape Framework to reflect additional scope and design development
- Sustainability integration
- Crime prevention through Environmental Design
- Heritage interpretation along the PSP
- Operation Efficiency Audit

A procurement strategy and timings are currently being developed in partnership with industry.

Thomas Road Upgrade project

Funding was recently allocated for the Thomas Road Upgrade project, which will remove merge points along Thomas Road and reduce congestion bottlenecks, creating a safer road that can cope with the ever-increasing population in Serpentine and Jarrahdale. The scope includes:

- Thomas Road duplication from Tonkin Highway to South Western Highway
- Interchange at Thomas Road and Tonkin Highway (grade separation)
- Shared path on Thomas Road
- Local intersection upgrades:
 - Kardan Boulevard / Hopkinson Road intersections – realign Hopkinson Road north leg and construct roundabout at Kardan Boulevard intersection
 - Masters Road intersection – install roundabout
 - Briggs Road intersection – modify to left-in / left-out
 - Plaistowe and Wungong South Road intersections – reconstruct
- See overleaf for map.

Development works are currently underway and include:

- Preparation of design drawings
- Service relocations strategies
- Environmental and heritage approvals
- Sustainability activities
- Local area access and connectivity strategy
- Traffic modelling
- Updated cost estimate

A procurement strategy and timings are currently being developed in partnership with industry.

Environment and heritage approvals

Conditional State environmental approval has been obtained for the project under the Environmental Protection Act. Approval of Management Plans and Strategies are yet to be received.

Conditional approval has been received from the Commonwealth for the Environment Protection and Biodiversity Conservation (EPBC) Act. Approval of the Management Plans and Strategies are yet to be received.

Section 18 heritage approvals have been received for sites on Government land. Section 18 approvals will be obtained for private land following land acquisition.

Sustainability excellence

The Tonkin Highway Extension project's planning recently achieved a 'Bronze' Rating under the Infrastructure Sustainability Council Infrastructure Sustainability (IS) Rating Scheme, with a score of 27.2 points across 16 credits.

The credits included Urban and Landscape Design, Resilience, Climate Change, Resource Efficiency, and Stakeholder Engagement.

The Bronze rating recognises the joint efforts of the project team of Main Roads and Arup to plan for best practice outcomes in sustainability.

All Main Roads projects valued over \$100m must achieve a minimum score of 20 under the IS Rating Scheme.

Main Roads and Arup jointly submitted the Tonkin Highway Extension project for nomination for the Infrastructure Sustainability Council's (ISC) Annual Award and have been shortlisted as finalists for the Award.

The Bronze rating will set the Delivery team up to achieve the mandated Silver ISC rating for the design and construction phase of the project.

Equine access

Equine underpasses are currently confirmed at the Tonkin Highway intersections with Abernethy Road, and Gossage Road.

Additional investigations are underway for both projects to understand the Equine network between Wright Road and South Western Highway, in liaison with Shire of Serpentine-Jarrahdale.

Community and stakeholders

Community and stakeholder engagement activities underway include answering enquiries from local residents, businesses, developers and interested stakeholders, finalising land dealing plans, completing land acquisition, resolving access for further geotechnical works, and engaging service providers to determine requirements.

We are working closely with the Shire of Serpentine-Jarrahdale and the Shire's Equine Advisory Group to understand local issues and opportunities.

We thank the community for their patience as we work through planning and design issues, and the additional scope items, and commit to keeping them updated as this work progresses.

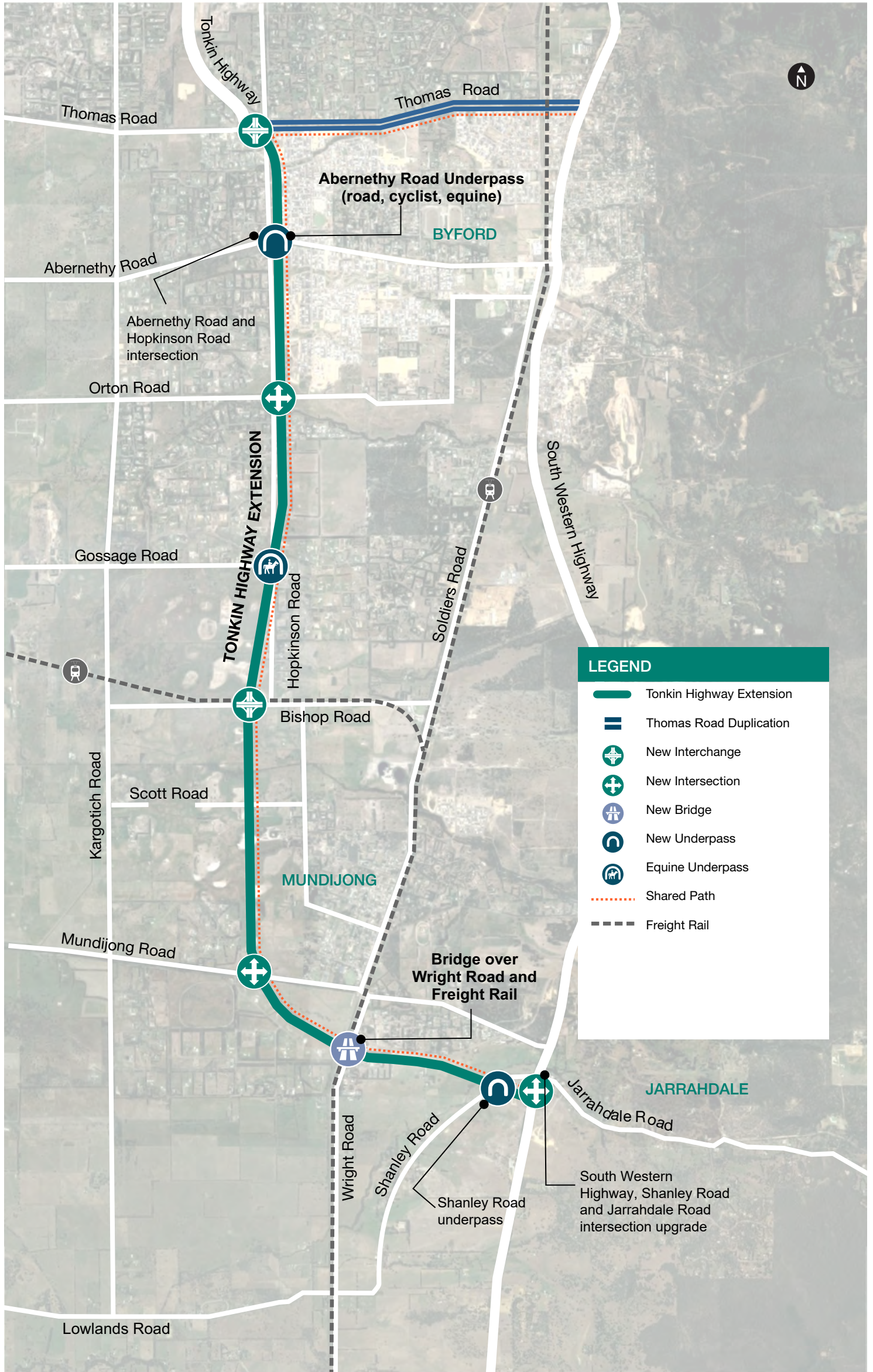
Future activities will include a community information session to answer questions from the community on both projects.

Further information

The Main Roads website includes further information and documents on both projects. It can be viewed at <https://www.mainroads.wa.gov.au/projects-initiatives/>

You can also contact the project team on 138 138 or at enquiries@mainroads.wa.gov.au

TONKIN HIGHWAY EXTENSION THOMAS ROAD TO SOUTH WESTERN HIGHWAY



LEGEND

- Tonkin Highway Extension
- Thomas Road Duplication
- New Interchange
- New Intersection
- New Bridge
- New Underpass
- Equine Underpass
- Shared Path
- Freight Rail