



Australian Government



mainroads
WESTERN AUSTRALIA

BUILDING OUR FUTURE



TONKIN HIGHWAY

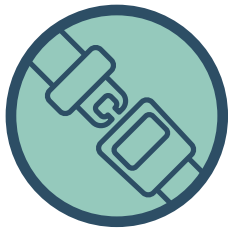
EXTENSION

THOMAS ROAD TO SOUTH WESTERN HIGHWAY

Enhancing access to growing residential and commercial areas, industry, the airport and the freeway

Reducing congestion, **improving safety** and improving traffic flows to Byford and Mundijong

SAFETY



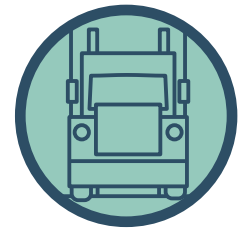
AIRPORT



CONGESTION



FREIGHT



Main Roads is extending Tonkin Highway 14 kilometres from Thomas Road, Oakford to South Western Highway, south-east of Mundijong. The Australian (\$404 million) and Western Australian (\$101 million) Governments have jointly funded this project.

The Tonkin Highway Extension to South Western Highway south-east of Mundijong forms part of a package of infrastructure works set to ease congestion, improve safety, provide transport access and new freight connections for the thousands of people living and working in Perth's south-east.

Population projections show that by 2031, sustained growth in the south-east sub-region will increase by 35 per cent from the 2008 base level. This additional population will put significant pressure on the existing road network.

Tonkin Highway Extension – Thomas Road to South Western Highway Project

The project proposes to extend the Tonkin Highway from Thomas Road, Oakford to South Western Highway, south-east of Mundijong, providing improved access to growing residential areas, industry, the airport and the freeway. The preliminary concept includes:

- approximately 14 kilometres of four lane dual carriageway
- construction and/or upgrades of intersections at Thomas Road, Orton Road, Bishop Road, Mundijong Road and South Western Highway

- bridges over the existing freight rail line and Perth to Bunbury rail line
- a shared path for cyclists and pedestrians along the eastern side of the road corridor, with planned connections to local path networks, and
- an equine rider and pedestrian underpass under Tonkin Highway at Abernethy Road.



KILOMETRE EXTENSION



NEW INTERSECTIONS

What happens during project planning and development?

Extensive planning and development work is underway to confirm the scope and progress the various approvals to allow for road construction including:

- stakeholder consultation to identify the various issues and constraints, which may impact the precise location of the highway, local road connections and types of intersections.
- geotechnical and site investigations, traffic and noise modelling, and environmental and heritage assessments to inform the environmental approval processes.

The results of these activities will inform the development of a concept design and delivery schedule.

Project stages: *The Tonkin Highway Extension – Thomas Road to South Western Highway Project is currently in the Planning and Development stage.*

Protecting the environment

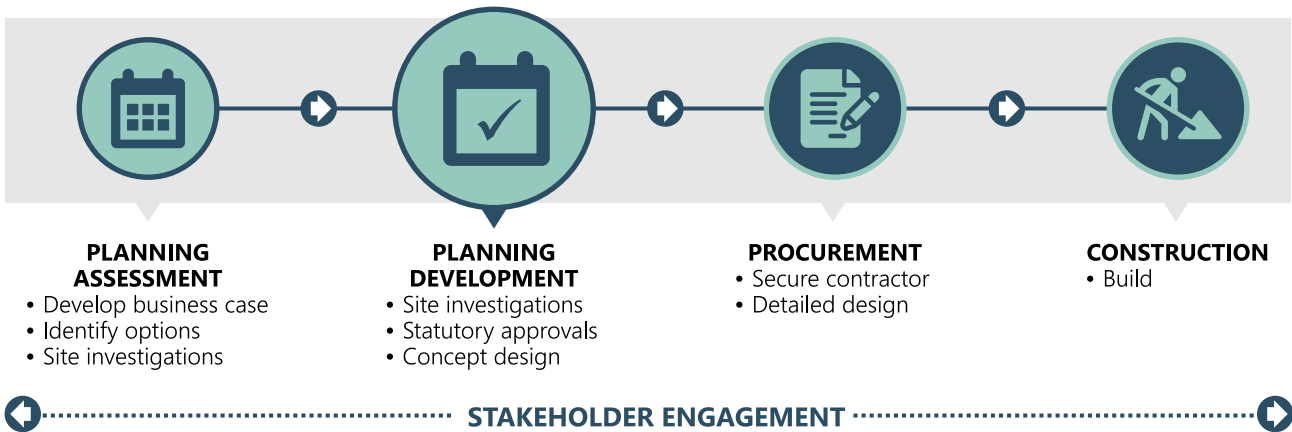
Main Roads is committed to minimising the impact on the environment when developing, constructing and maintaining the road network.

We are undertaking studies and assessments along the alignment to understand the land, vegetation, flora, fauna, heritage and surrounding environment.

Early environmental and heritage investigations have included water quality assessment, Aboriginal and European heritage surveys, hydrological and wetlands assessments.

Geotechnical surveys to investigate and analyse the ground conditions, surface materials, soils and groundwater level measurements have been completed.

We continue to consult with the Federal Department of Agriculture, Water and Environment for assessment of preliminary documentation under the *Environment Protection and Biodiversity Conservation Act*.

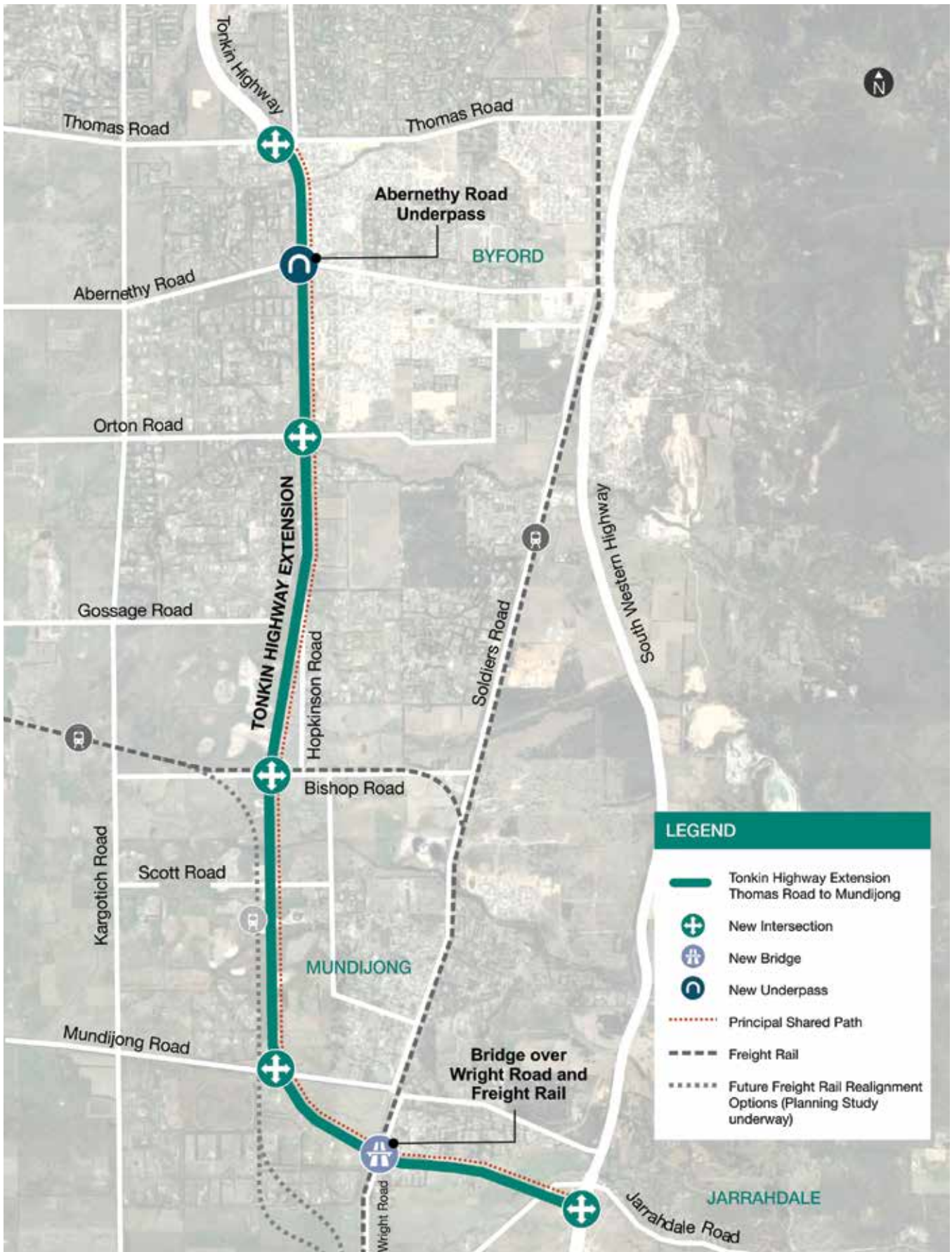


Predicting future traffic needs

Main Roads is undertaking traffic modelling, which will help inform the types of intersections to be considered and developed along the Tonkin Highway extension.

The modelling considers current traffic volumes and predicts future traffic volumes and patterns based on the highway being in place with accesses at Thomas Road, Orton Road, Bishop Road, Mundijong Road and South Western Highway.





Indicative only and subject to change

Managing noise

Potential noise impacts is a key consideration when planning major road infrastructure.

Baseline noise monitoring has been undertaken which, combined with the predicted traffic volumes for the extension and the local road network, will inform the noise modelling plan for the Tonkin Highway Extension. As part of the detailed design process, property owners will be consulted if a noise wall or screen is going to be located adjacent to their properties.

The impacts of noise from new roads is managed under *State Planning Policy 5.4 "Road and Rail Transport Noise and Freight Considerations in Land Use Planning"*.

Freight rail realignment planning study

Main Roads is undertaking a planning study to determine an alignment and the feasibility of realigning the existing Kwinana South Western freight rail as part of the Tonkin Highway Extension project.

The study includes site investigations to identify an alignment that can meet rail operational needs and minimise the impacts on individual properties and the environment.

Get involved

To plan for the project, Main Roads is liaising with a range of key stakeholders, including the Public Transport Authority, the Shire of Serpentine-Jarrahdale and other government agencies, to ensure our concept aligns with future planned development for rail and local roads.

We are also keen to hear from the local community to identify issues and opportunities as part of the planning process.

To provide your feedback or nominate for opportunities to be involved, please visit: www.mysaytransport.wa.gov.au/main-roads

More information

Read about the Tonkin Highway Extension – Thomas Road to South Western Highway Project or subscribe for project updates at: www.projects.mainroads.wa.gov.au/home/current/tonkinextension



The Tonkin Highway Extension Project is part of a suite of improvements planned or now underway to transform the Tonkin Highway corridor, providing a high standard north-south transport link from Muchea down to Mundijong.

These include the:

- upgrade between Collier Road and Great Eastern Highway (known as the Tonkin Highway Gap)
- upgrade of the intersections south of Roe Highway (at Hale Road, Welshpool Road and Kelvin Road); and
- extension of the Armadale Rail Line to service the Byford area, which is being explored through the METRONET rail program.



Main Roads Western Australia
Don Aitken Centre, Waterloo Crescent, East Perth 6004
T: 138 138 | e: enquiries@mainroads.wa.gov.au
mainroads.wa.gov.au

June 2020