

Tonkin Highway Extension and Thomas Road Upgrade



Tonkin Highway is being extended from Thomas Road to South Western Highway south-east of Mundijong. The \$755 million project is jointly funded by the Australian (\$604 million) and Western Australian (\$151 million) Governments. \$290 million is also allocated to upgrade Thomas Road from Tonkin Highway to South Western Highway, (\$145 million each by the Australian and the Western Australian Governments), bringing the total funding commitment to \$1.045 billion.

Concept designs for both the projects are nearing finalisation, with community information sessions planned in August.

Activities underway

Project development work has continued this year on both the Tonkin Highway Extension and Thomas Road Upgrade projects. Highlights include:

- concept design finalisation
- environmental and heritage assessments
- land requirement definition
- rail authority liaison
- service relocation consultation
- existing pavement investigations
- geotechnical and groundwater investigations
- access and connectivity strategy
- fire and emergency entry/egress provisions
- noise wall and visual screening assessments
- urban landscape design framework

- crime prevention through environmental design
- heritage interpretation strategy
- constructability assessment
- project video

There have been some scope additions to both projects since our last newsletter. See overleaf updated maps which show the scope of works and extents of the projects.

Opportunity to view project designs and speak with project team

Community information sessions have been scheduled to give the local community the opportunity to view project designs in detail, understand local and access road changes as a result of the project, view a project video and ask the project team questions.

The sessions are a drop-in style; people can come and go throughout the timeslot.

The sessions are scheduled for:

- Wednesday 9 August, 5pm to 7pm, Byford Dome
- Saturday 12 August, 11am to 1pm, Serpentine Jarrahdale Community Resource Centre, Mundijong

An online survey will also be conducted during August and September to provide a further opportunity for people to view the material and have your say.

Aboriginal and historic heritage

A Heritage Interpretation Strategy has been undertaken to identify traditional landowner and European heritage opportunities that can be incorporated within the Urban Landscape and Design Framework.

A significant component of the Strategy was traditional landowner liaison, which included a storytelling workshop with Aboriginal elders, looking at the Aboriginal and historic heritage site locations, opportunities for interpretation, and developing a heritage vision for the project.

Access and connectivity strategy

Access and connectivity design work has been undertaken with the following objectives:

- Provide reasonable connectivity to key local and regional destinations, with the aim of minimising travel time impacts.
- Provide safe, convenient access for active transport users and to minimise interface points with vehicular traffic.
- Provide connectivity at strategic points to support regular recreational and equine activity.

The access and connectivity design was developed with feedback from the Shire Serpentine Jarrahdale, emergency services, local residents and interest groups to determine the most suitable connections to, and across, the highway alignment. In addition to community requirements, land-use constraints, as well as environmental and heritage factors, were also considered in the design.

Noise mitigation measures

Noise monitoring and modelling has been undertaken to determine current and future noise levels along the proposed route, in accordance with Ministerial Statement 595. Mitigations proposed include noise barriers and road surfacing treatments to reduce noise for residential properties where required.

Road safety excellence

An Australian Road Assessment Program (AusRAP) assessment was recently undertaken for the project, with Star Ratings awarded based on its level of safety. The assessment was led by iRAP/AusRAP in collaboration with Main Roads and our engineering consultants ARUP. AusRAP provides independent information and advice about the safety of our major highways and identifies measures to improve safety and reduce road trauma.

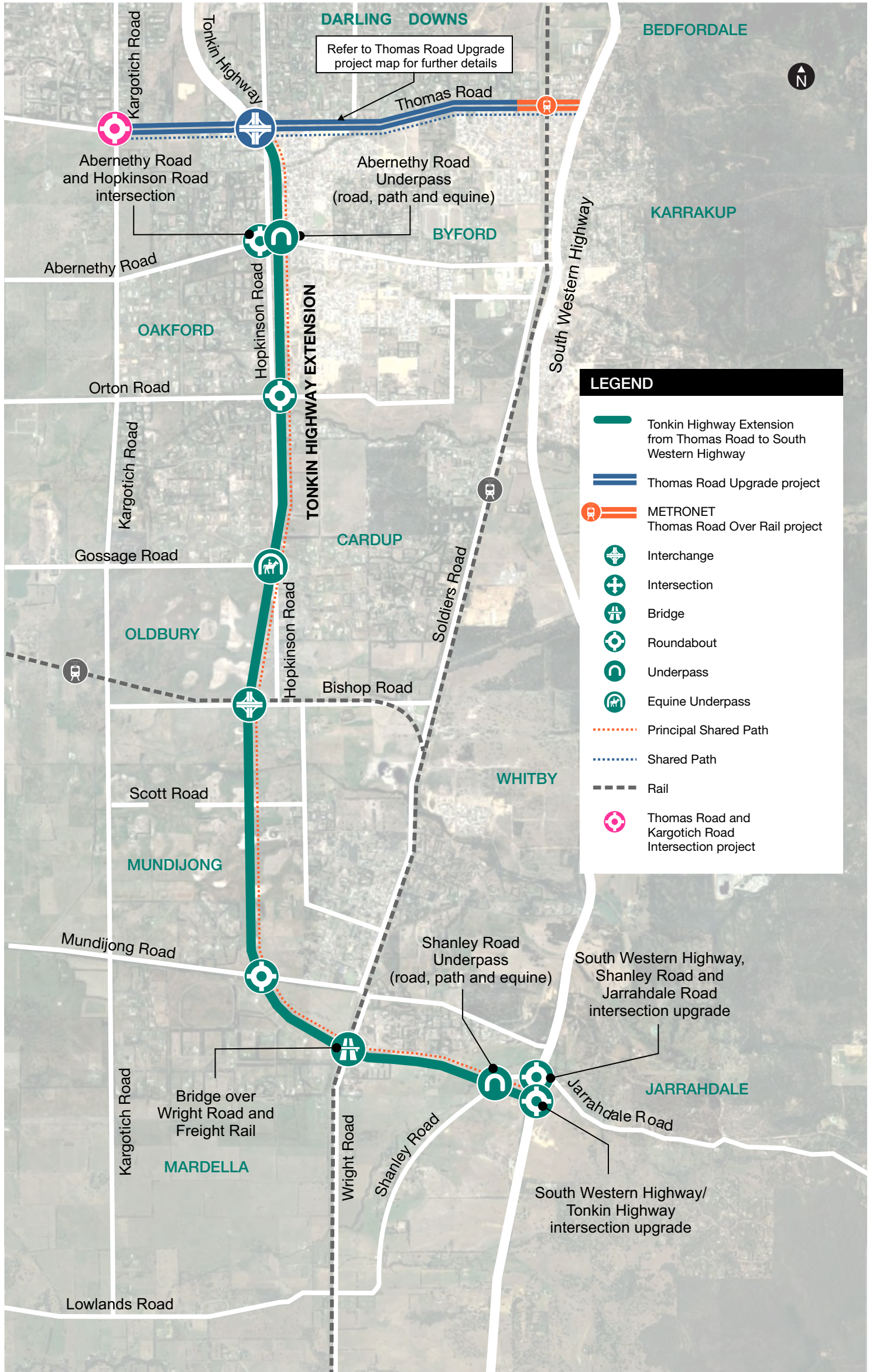
The project achieved a fantastic result: 5 stars for active transport (pedestrians and cyclists); 4 stars for vehicles; and 3 stars for motorcyclists (maximum achievable due to highway's higher speed limit).

A number of other assessments and reviews have been undertaken to ensure the project design achieves the aim of improving safety for vulnerable users such as pedestrians, cyclists and equine riders. These include a multi-criteria analysis of every intersection on the project, using crash record data to identify blackspot intersections, identifying deficient local road cross sections, a crime prevention review of the Principal Shared Path (PSP) and underpasses, and predicted traffic modelling to test and validate the design.

Further information

You can contact the project team on 138 138 or at enquiries@mainroads.wa.gov.au. The project webpage is available at <https://www.mainroads.wa.gov.au/tonkin-hwy-extension>. You can also join the email subscription list to receive the latest project news.

TONKIN HIGHWAY EXTENSION THOMAS ROAD TO SOUTH WESTERN HIGHWAY



LEGEND

- Tonkin Highway Extension from Thomas Road to South Western Highway
- Thomas Road Upgrade project
- METRONET Thomas Road Over Rail project
- Interchange
- Intersection
- Bridge
- Roundabout
- Underpass
- Equine Underpass
- Principal Shared Path
- Shared Path
- Rail
- Thomas Road and Kargotich Road Intersection project

THOMAS ROAD UPGRADE



Australian Government



LEGEND

- Thomas Road Duplication
- Shared Path
- Interchange
- Roundabout
- Cul-de-sac
- Traffic Signals
- Left In / Left Out Only
- Intersection Upgrade
- Road Realignment
- Signalised Equine Crossing
- Thomas Road Over Rail Project
- Tonkin Highway Extension
- Thomas Road and Kargotich Road intersection project

Indicative only and subject to change