

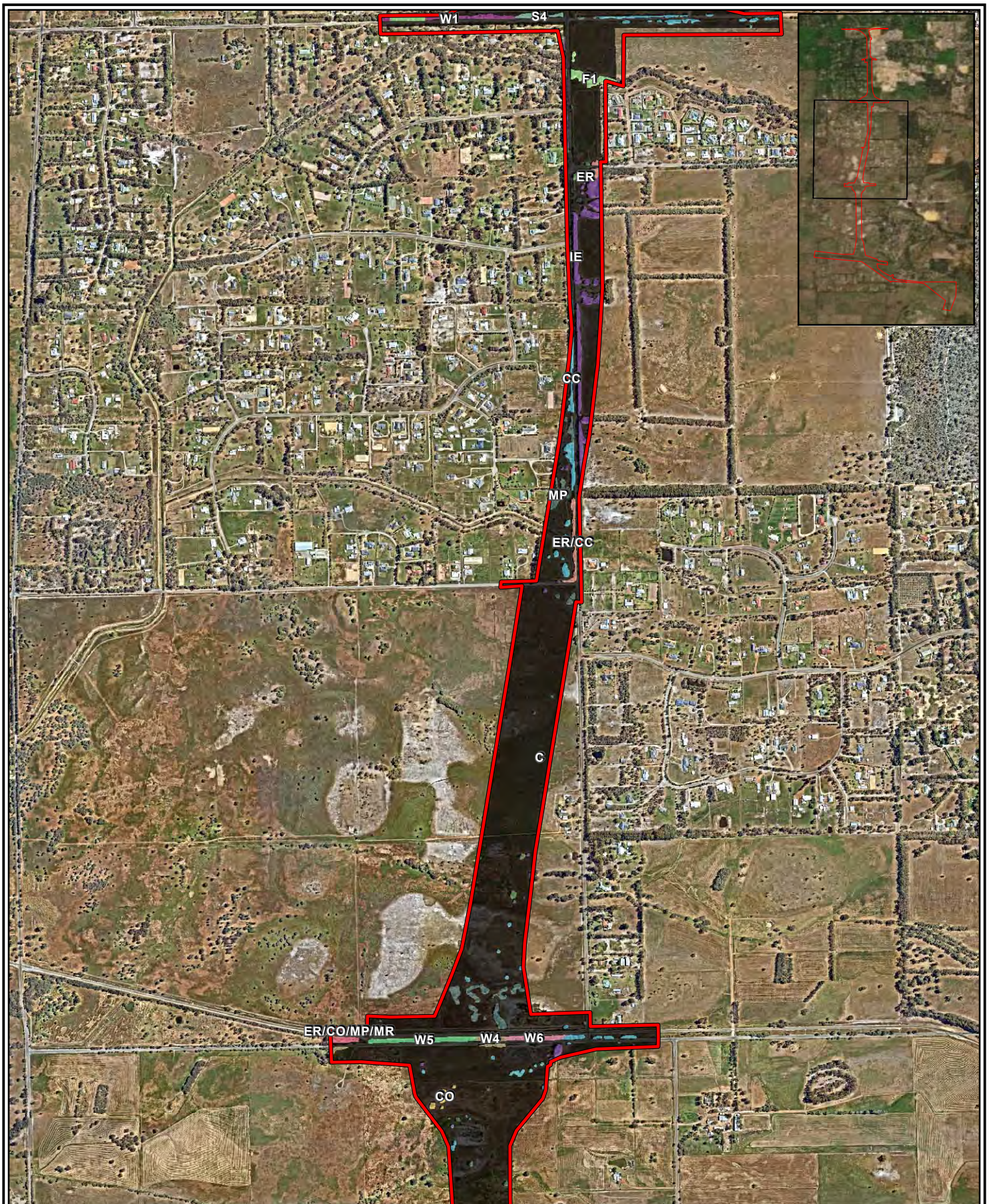
Legend			
Development envelope	ER/EC - <i>Eucalyptus rudis</i> and planted <i>E. camaldulensis</i> over pasture weeds	RV 2 - Revegetated with <i>Corymbia calophylla</i> and <i>Eucalyptus rudis</i> over <i>Maleleuca raphiophylla</i> and mixed shrub species over pasture weeds	W1 - Mid woodland of <i>Corymbia calophylla</i> over <i>Xanthorrhoea preissii</i> and occasional <i>Kingia australis</i>
AS - <i>Acacia saligna</i> over pasture weeds	F1 - Mid closed forest of <i>Eucalyptus rudis</i> and <i>Maleleuca preissiana</i> over <i>Xanthorrhoea preissii</i> and <i>M. lateritia</i>	S4 - Tall shrubland of <i>Maleleuca viminea</i> subsp. <i>viminea</i> , <i>Viminaria juncea</i> and <i>Jacksonia stemborgiana</i> over introduced grasses	W3 - Mid woodland of <i>Corymbia calophylla</i> over <i>Xanthorrhoea preissii</i> and <i>Jacksonia stemborgiana</i> and mixed species
C - Cleared land	IE - Planted non-native <i>Eucalyptus</i> species over pasture weeds	MP - <i>Maleleuca preissiana</i> over pasture weeds	W5 - Low woodland of <i>Maleleuca preissiana</i> over mid open shrubland
CC - Individual or stands of <i>Corymbia calophylla</i> over pasture weeds		TO - Dense rushland of <i>Typha orientalis</i>	
CO - <i>Casuarina obesa</i> over pasture weeds			
ER - <i>Eucalyptus rudis</i> over pasture weeds			

Scale 1:16,000 at A4		 0 200 Meters	
Coord. Sys. GDA 1994 MGA Zone 50			
Job No: 5675204			
Client: Main Roads			
Version: A	Date: 12-Dec-2019		
Drawn By: hsullivan	Checked By: CT		

Tonkin Highway Extension

VEGETATION ASSOCIATION
PAGE 1

FIGURE 2



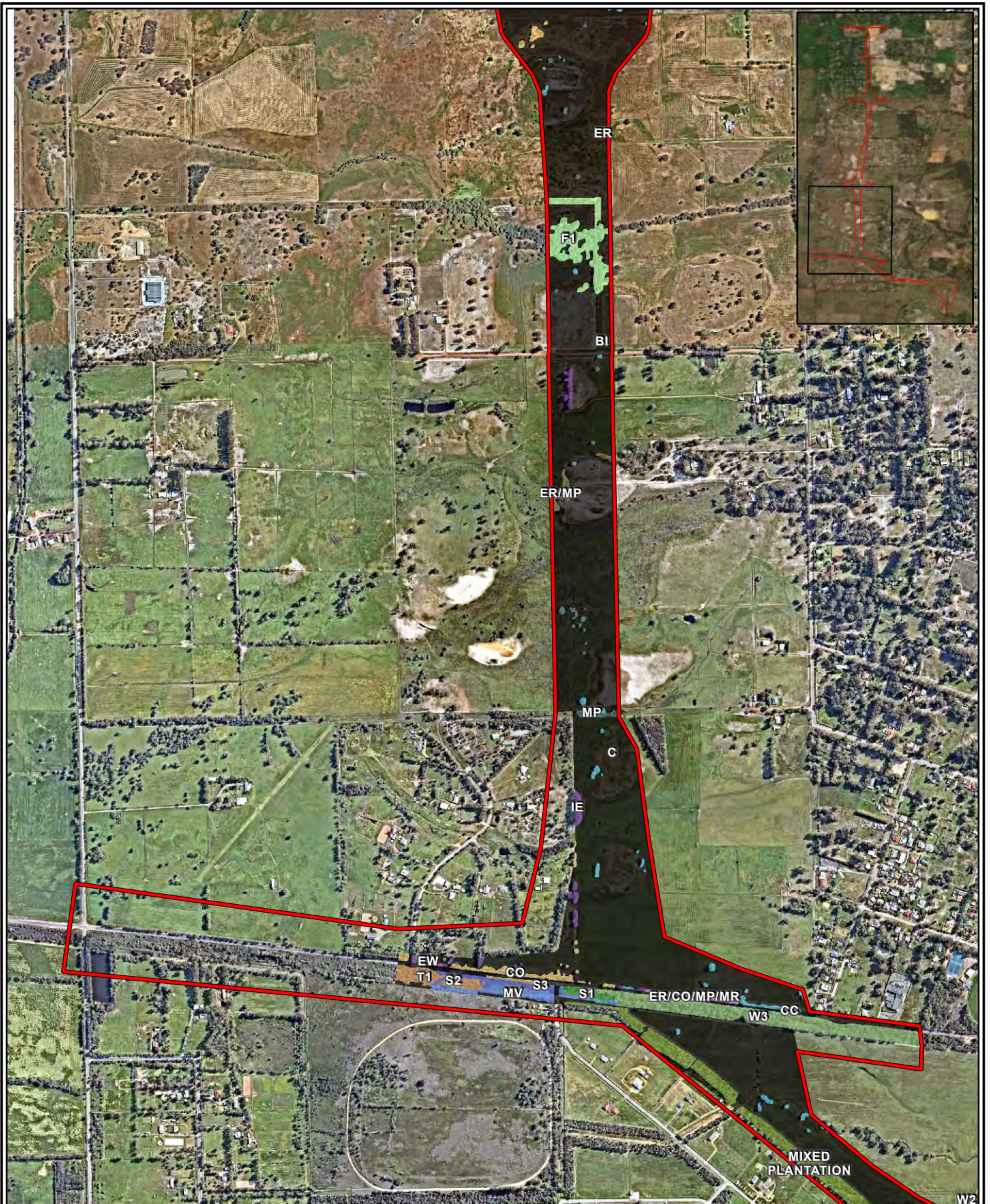
Legend			
Development envelope	ER/CC - <i>Eucalyptus rudis</i> and <i>Corymbia calophylla</i> over pasture weeds	F1 - Mid closed forest of <i>Eucalyptus rudis</i> and <i>Maleleuca preissiana</i> over <i>Xanthorrhoea preissii</i> and <i>M. lateritia</i>	W4 - Mid woodland of <i>Corymbia calophylla</i> , <i>Maleleuca preissiana</i> and <i>M. raphiophylla</i> over <i>Lepidosperma longitudinale</i>
C - Cleared land	ER/CO/MP/MR - <i>Eucalyptus rudis</i> , <i>Casuarina obesa</i> , <i>Maleleuca preissiana</i> and <i>Maleleuca raphiophylla</i> over pasture weeds	IE - Planted non-native <i>Eucalyptus</i> species over pasture weeds	W5 - Low woodland of <i>Maleleuca preissiana</i> over mid open shrubland
CC - Individual or stands of <i>Corymbia calophylla</i> over pasture weeds	MP - <i>Maleleuca preissiana</i> over pasture weeds	MP - <i>Maleleuca preissiana</i> over pasture weeds	W6 - Low woodland of <i>Banksia attenuata</i> and <i>B. menziesii</i> over <i>Jacksonia furecillata</i> and <i>Kunzea glabrescens</i> over <i>Maleleuca trichophylla</i> over introduced grasses
CO - <i>Casuarina obesa</i> over pasture weeds	ER/MR - Mixed stand of <i>Eucalyptus rudis</i> and <i>Maleleuca raphiophylla</i> over pasture weeds		
ER - <i>Eucalyptus rudis</i> over pasture weeds			

Scale 1:18,000 at A4	0 200 Meters
Coord. Sys. GDA 1994 MGA Zone 50	
Job No: 5675204	
Client: Main Roads	
Version: A	Date: 12-Dec-2019
Drawn By: hsullivan	Checked By: CT

Tonkin Highway Extension

VEGETATION ASSOCIATION PAGE 2

FIGURE 2



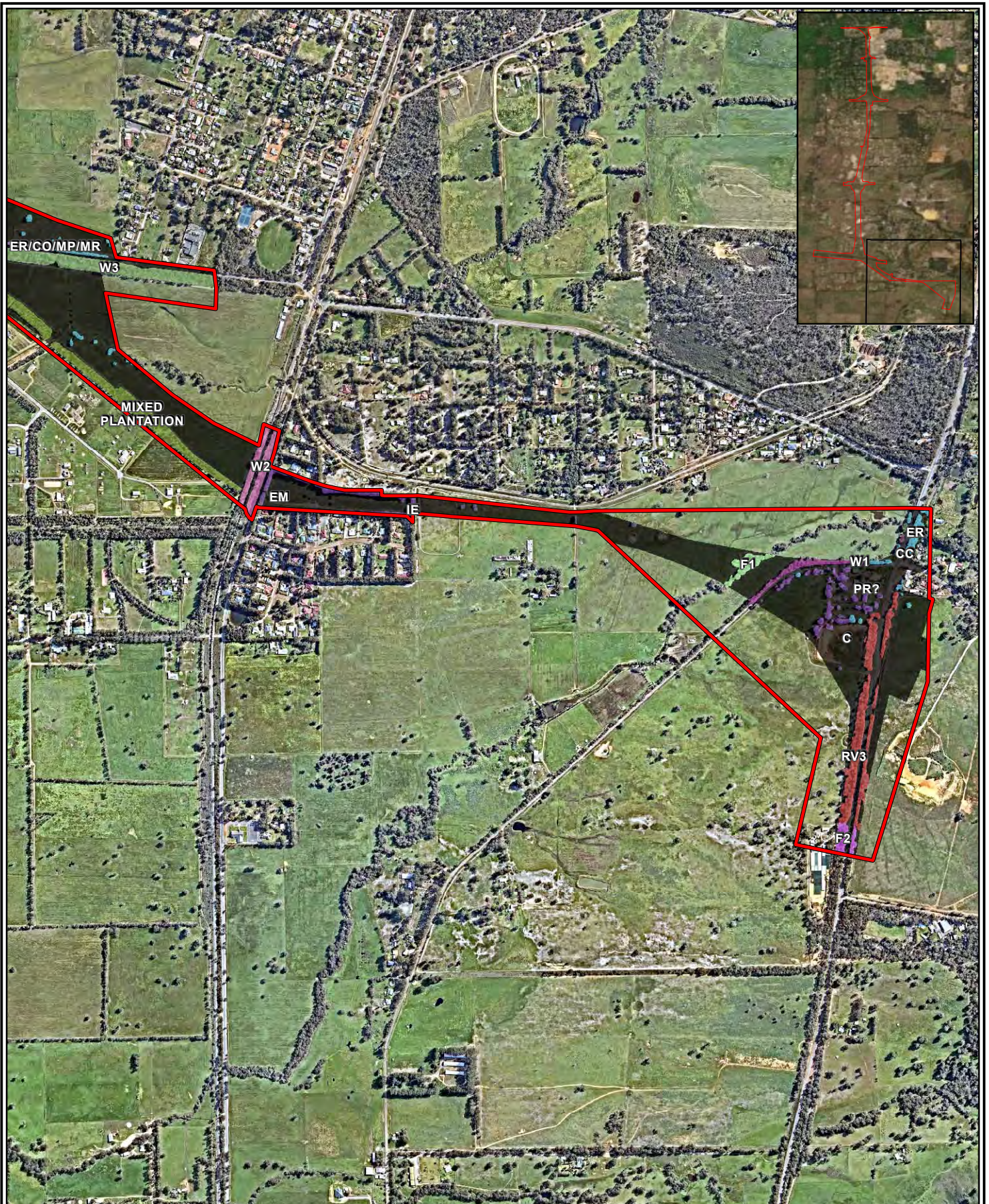
Legend	
Development envelope	ER/CO/MP/MR - <i>Eucalyptus rudis</i> , <i>Casuarina obesa</i> , <i>Maleleuca preissiana</i> and <i>Maleleuca raphiophylla</i> over pasture weeds
BI - <i>Banksia ilicifolia</i> over pasture weeds	MP - <i>Maleleuca preissiana</i> over pasture weeds
C - Cleared land	MV - Highly modified areas of native vegetation
CC - Individual or stands of <i>Corymbia calophylla</i> over pasture weeds	S1 - Mixed shrubland of <i>Xanthorrhoea preissii</i> and <i>Kingia australis</i> over mid sedgeland
CO - <i>Casuarina obesa</i> over pasture weeds	S2 - Tall open shrubland of <i>Hakea varia</i> , <i>Jacksonia sternbergiana</i> , <i>Xanthorrhoea preissii</i> and <i>Kingia australis</i> over mid open shrubland
EG - <i>Eucalyptus gomphocephala</i> over pasture weeds	S3 - Mid open shrubland of <i>Hakea incrassata</i> and <i>Allocasuarina microstachya</i> over mid closed sedgeland
ER - <i>Eucalyptus rudis</i> over pasture weeds	T1 - Tall closed shrubland of <i>Maleleuca osullivanii</i> and <i>Hakea varia</i> over low sedgeland
IE - Planted non-native <i>Eucalyptus</i> species over pasture weeds	W3 - Mid woodland of <i>Corymbia calophylla</i> over <i>Xanthorrhoea preissii</i> and <i>Jacksonia sternbergiana</i> and mixed species
F1 - Mid closed forest of <i>Eucalyptus rudis</i> and <i>Maleleuca preissiana</i> over <i>Xanthorrhoea preissii</i> and <i>M. lateritia</i>	W2 - Mixed Plantation
EW - <i>Eucalyptus wandoo</i> over pasture weeds	S1 - Mixed shrubland of <i>Xanthorrhoea preissii</i> and <i>Kingia australis</i> over mid sedgeland

Scale 1:16,000 at A4	0 200 Meters
Coord. Sys. GDA 1994 MGA Zone 50	
Job No: 5675204	
Client: Main Roads	
Version: A	Date: 12-Dec-2019
Drawn By: hsullivan	Checked By: CT

Tonkin Highway Extension

VEGETATION ASSOCIATION
PAGE 3

FIGURE 2



Legend			
Development envelope	F1 - Mid closed forest of <i>Eucalyptus rudis</i> and <i>Maleleuca preissiana</i> over <i>Xanthorrhoea preissii</i> and <i>M. lateralis</i>	IE - Planted non-native <i>Eucalyptus</i> species over pasture weeds	W1 - Mid woodland of <i>Corymbia calophylla</i> over occasional <i>Kingia australis</i>
C - Cleared land	F2 - Mid closed forest of <i>Eucalyptus marginata</i> and <i>Corymbia calophylla</i> over low woodland of <i>Allocasuarina fraseriana</i> and <i>Banksia grandis</i> over <i>Xanthorrhoea preissii</i> and <i>Hakea lissocarpha</i>	Mixed Plantation	W2 - Mid woodland of <i>Corymbia calophylla</i> and <i>Maleleuca preissiana</i> over mid open shrubland of <i>Xanthorrhoea preissii</i> and <i>Jacksonia sternbergiana</i> over mixed shrubland
CC - Individual or stands of <i>Corymbia calophylla</i> over pasture weeds		PR - <i>Pinus radiata</i> over pasture weeds	
EM - <i>Eucalyptus marginata</i> over pasture weeds		RV 3 - Revegetated road reserve dominated by <i>Corymbia calophylla</i>	
ER - <i>Eucalyptus rudis</i> over pasture weeds			
EW - <i>Eucalyptus wandoo</i> over pasture weeds			

Scale 1:18,000 at A4	0 200 Meters
Coord. Sys. GDA 1994 MGA Zone 50	
Job No: 5675204	
Client: Main Roads	
Version: A	Date: 12-Dec-2019
Drawn By: hsullivan	Checked By: CT

Tonkin Highway Extension

VEGETATION ASSOCIATION
PAGE 4

FIGURE 2

