



November 2022

Tonkin Gap Project and Associated Works Construction Update

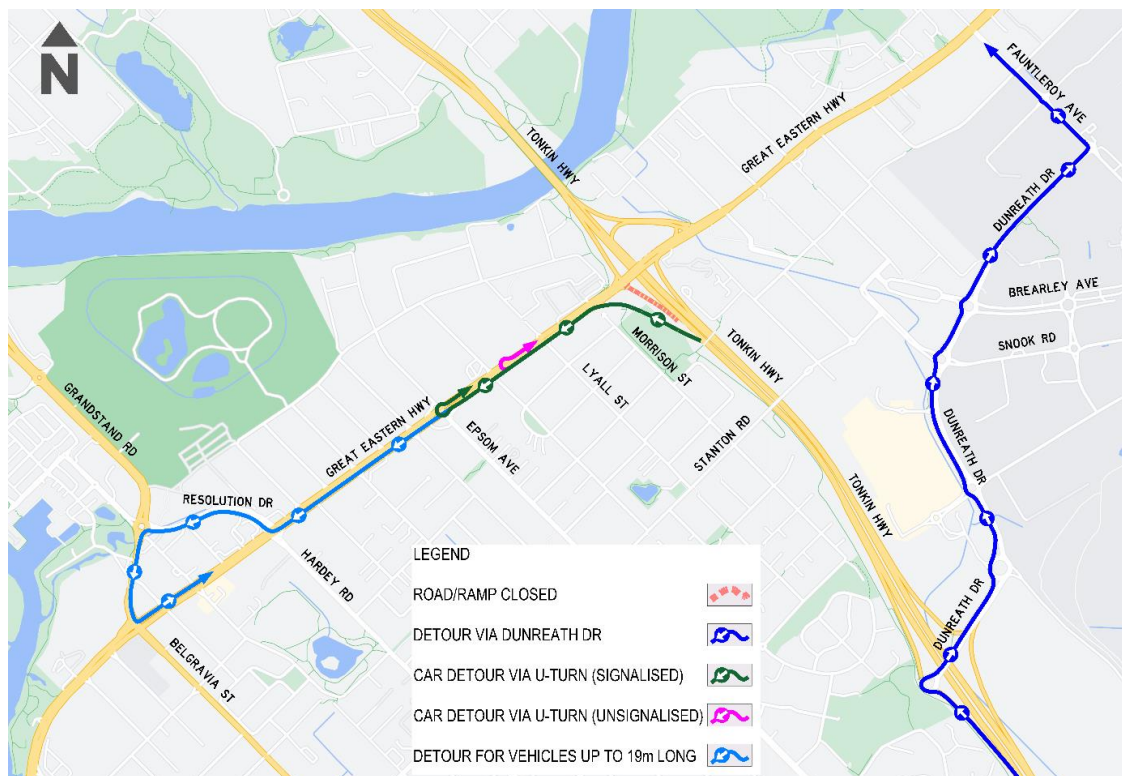
This update contains important information about upcoming works near you. Works below are anticipated for November but are subject to change. Some works will need to be undertaken on Sundays. Please drive carefully and observe the road signage. There is potential for longer than usual travel times and we encourage road users to plan ahead. Up to date information will be available through the Main Roads website and our Tonkin Gap Facebook page.

Great Eastern Highway works

On 1 and 3 November the team will be working at night to realign Great Eastern Highway in both directions between Tonkin Highway ramps and Kalgoorlie Street. This is so the team can access the median and middle lanes. There will be some noise during these works, including the use of a water blasting machine to remove line marking.

In late-November we will be modifying the signals at the Great Eastern Highway and Tonkin Highway intersection. This will require the use of a road saw to cut through the asphalt and there will be noise during these works. Stay up to date on the 'Roadworks' page on the Main Roads website for details.

In December traffic will be switched on to the new Tonkin Highway northbound off-ramp to Great Eastern Highway. However, once we switch traffic on to the new ramp the right turn on to Great Eastern Highway eastbound will be temporarily unavailable. Commuters will need to turn left and U-turn near Lyall Street or at the Epsom Avenue lights to travel east or exit at Dunreath Drive (map 1). This is so we can keep building the new loop ramp from Great Eastern Highway to Tonkin Highway northbound. Keep an eye out for dates and further details in the December Construction Update.



Map 1

Great Eastern Highway underpass closure extended

While excavating at the Great Eastern Highway underpass, the team discovered abandoned services including an old 800mm steel water main which extends 90m under Great Eastern Highway. The team will grout fill the pipe to avoid collapse in the future. Because of this and previous discoveries, we have had to modify the design and the construction methodology, adding additional time to complete the work. The revised construction method has also been staged to protect the integrity of the existing underpass.



Great Eastern Highway underpass

The underpass will need to remain closed until early 2023. We understand this extended closure will inconvenience some residents and we apologise. The current detour will remain in place until the work is finished.

Tonkin Highway between Dunreath Drive and Great Eastern Highway

In November, we will realign Tonkin Highway between Dunreath Drive and Great Eastern Highway to the west. This is so the team can build the new southbound lanes, install concrete barriers, and finish the final verge works. Subject to approval, on 10 November (13 or 14 contingency), there will be a full night time closure of Tonkin Highway between Dunreath Drive and Great Eastern Highway to complete this switch. Stay up to date on the 'Roadworks' page on the Main Roads website for details.

Victoria Street footbridge re-opening

Installation work on the Victoria Street footbridge will soon be complete and we anticipate reopening in November. Options to improve the aesthetic look of the screens are being explored. This may involve swapping over the screens a section at a time after the footbridge has opened, ensuring that it is still safe to use at all times. We understand the extended closure of the bridge is inconvenient and we thank you for your patience.

We will have to close lanes on Tonkin Highway southbound one night in mid-November so we can finish installing the protection screens and handrailing on the footbridge. Stay up-to-date via the Main Roads website and Tonkin Gap Facebook page.

Selby Park irrigation

On behalf of the City of Belmont, we will be replacing and upgrading the existing irrigation through the main grassed area in Selby Park. We plan to start in November and this work will take approximately 4 to 6 weeks to complete. At times, areas of the park will be fenced off. We aim to keep as much of the park accessible as possible during the works and we thank you for your understanding.

Redcliffe Bridge

This month, works will continue to install the permanent traffic barriers and build the road approaches at both ends of Redcliffe Bridge. The team has also started to install the noise wall panels on the northern end of the bridge deck.

Dunstone Road full closure for noise wall installation

From 1 to 22 November, Dunstone Road will be closed in both directions to install noise wall panels on the new bridges over Dunstone Road. A full closure is required to complete the works safely. We also plan to complete other construction activities during this closure, however shorter closures on Dunstone Road will also be required as we progress.

Railway Parade bridges

From 11 to 14 November the crossing at Moojebing Road will be closed, so we can install protection screens on the Railway Parade bridges. To safely lift these screens over the train line, the Midland Line will also be closed. Train replacement bus services will operate while train services are cancelled. For more details, including the closure times and operation of train replacement services, visit transperth.wa.gov.au.

From 8 to 15 November, we will be working at night to remove the permanent concrete traffic barriers along the median of Tonkin Highway near the Guildford Road and Railway Bridges. This work will happen at night, as we will need to close lanes on Tonkin Highway. There will be noise during these works, including the use of an asphalt saw. Stay up-to-date via the Main Roads website.

Broun Avenue works

Works at Broun Avenue are progressing well. The team continues to complete pavement works and build the embankments for the second stage of Broun Avenue bridge. We plan to lay asphalt on the new bridge in mid-November.

From Monday, 31 October to Friday, 4 November, between 8pm and 6am, we will be working on Broun Avenue bridge to install protection screens. This work is required to happen at night, as we will need to close lanes on Tonkin Highway. There will be some noise during these works, including the use of a handheld concrete coring drill.

Cherry Court and Doyle Street intersection

In October, we realigned Broun Avenue and started works on the northern side of Cherry Court. Current access for Cherry Court residents and businesses is via Broun Avenue. Pavement and barrier works will also continue in the area, with access maintained to properties at all times.

Dive structures update

Northern dive structure

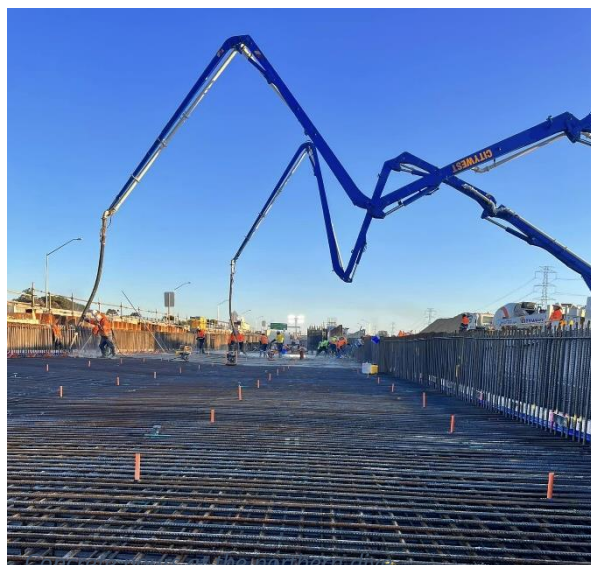
In November, the team will be continuing with the remaining concreting works for the structure and preparing to install the precast planks covering a section of the dive. These planks will form the surface for the new Tonkin Highway southbound lanes to travel over the dive structure.

Southern dive structure

The team continues to apply anti-graffiti coating to the traffic barriers and will start to install fencing and new protection screens.

Remember to call 138 138 if you have a question

Don't forget that we have a 24/7 call centre to help you with any questions or concerns you might have. If you need to contact us for any reason, at any time, please call 138 138. If the call is outside normal working hours, we can contact the Project Duty Manager to address the concern.



Out of hours works this month

In November our crews will be working through the night, 7pm until 7am and occasional Sundays, in our project area and along Tonkin Highway, between Dunreath Drive and Hepburn Avenue. Specific details, including dates and locations, will be posted on the Facebook group and the Main Roads website.

The works will occur at:

- Tonkin Highway between Redcliffe Bridge and Dunreath Drive
 - Barrier works, Victoria Street bridge works, Tonkin Highway lane closures, pavement works and traffic management
- Tonkin Highway between Guildford Road and Redcliffe Bridge
 - Traffic management, traffic barrier installation, pavement removal and installation of protection screens
- Great Eastern Highway, between Epsom Avenue and Coolgardie Avenue
 - Intermittent night works
 - Barrier installation, pavement works, traffic management
- Broun Avenue, between Embleton Avenue and Beechboro Road North
 - Traffic management, barrier relocation, installation of protection screens and early concrete pours
 - Intermittent Sunday works
- Tonkin Highway between Hepburn Avenue and Collier Road
 - Tonkin Highway widening, bridge modifications, traffic barrier works and road works
- Railway Parade and Guildford Road, near Tonkin Highway
 - Intermittent night works and traffic barrier removal
 - Installation of protection screens and finishing works on Railway Parade bridges
- Redcliffe Bridge
 - Early morning concrete pours for traffic barrier installation

What can I expect?

- Works and vehicle movements may be noticeable across all areas. Noise and vibration management measures are in place, including use of the quietest equipment reasonably available.
- Works will be in accordance with a noise management plan approved by your local government authority. If you have concerns about our works, please call 138 138 (24 hours).

For more information on Tonkin Gap

W: <https://www.mainroads.wa.gov.au/tonkin-gap/>
E: enquiries@mainroads.wa.gov.au
T: 138 138 (24 hours)
FB: <https://www.facebook.com/groups/tonkingap/>

For more information on the Morley-Ellenbrook Line

W: www.metronet.wa.gov.au
E: info@metronet.wa.gov.au
T: 08 9326 3666
FB: <https://www.facebook.com/groups/morley.ellenbrook>