

March 2023

# Tonkin Gap Project and Associated Works

## Construction Update

**This update contains important information about upcoming works near you. Works below are anticipated from March but are subject to change. Some works will need to be undertaken on Sundays. Please drive carefully and observe the road signage. There is potential for longer than usual travel times and we encourage road users to plan ahead. Up to date information will be available through the Main Roads website and our Tonkin Gap Facebook page.**

### Construction starts on new Tonkin Highway northbound lanes

Last month we realigned Tonkin Highway to the east to start construction of the new northbound lanes between Dunreath Drive and Redcliffe Bridge. During these works you will see bulk excavation and drainage works along the verge of Tonkin Highway northbound and there will be some noise, vibrations, and dust. On occasion we will need to close ramps and lanes on Tonkin Highway at night. Stay up to date on the Tonkin Gap Project 'Roadworks' page on the Main Roads website and the Tonkin Gap Facebook page for details.

### Great Eastern Highway upgrade works continue

Works on Great Eastern Highway will continue during the day and at night to build the new lanes and ramp tie-ins between Tonkin Highway and Morrison Street.

#### Great Eastern Highway underpass is now open

The Great Eastern Highway underpass and Selby Park footbridges are now open. Finishing works will continue including patching and painting. Thank you for your patience while we had the underpass closed.

#### Great Eastern Highway directional signage to be installed

In late March we will start to build the footings for the new directional signage over Great Eastern Highway. During installation, we will need to close the footpath on Great Eastern Highway eastbound between The Ascot Apartments and Tonkin Highway for approximately two months. There will also be traffic management on Great Eastern Highway when we install signage over the road. Stay up to date on the Tonkin Gap Project 'Roadworks' page on the Main Roads website for details and the detour map.



*Great Eastern Highway underpass*

#### Great Eastern Highway ramps

In February we started construction of the southbound off-ramp to Great Eastern Highway and works will continue this month, including preparation for noise wall installation. We will be working during the day and at night on demolition, drainage, pavement, and barrier installation.

We will also continue drainage and finishing works on Tonkin Highway southbound ramps from Great Eastern Highway at night. This will include intermittent ramp closures until mid-March.

## PSP set to open under new Redcliffe bridge

This month, we plan to open the new Redcliffe Bridge Principal Shared Path (PSP). Following the opening of the PSP we will close the path on the top of the existing eastern bridge so we can start installing noise walls. Stay tuned for the opening date on the Main Roads website or on the Tonkin Gap Facebook Page.



Redcliffe Bridge

## Early starts during hotter days

When it's hot our crews may need to start works before 7am across the project. Particularly when we are working with concrete, steel, asphalt and paint. We appreciate your understanding during these hotter months.

## Tonkin Highway between Collier Road and Redcliffe Bridge

We have been preparing to switch traffic onto the permanent Tonkin Highway northbound lanes. To prepare for the switch, there will be ongoing night works to complete asphaltting, kerbing, barrier relocations and line marking. Intermittent lane closures on Tonkin Highway between Collier Road and Redcliffe Bridge and ramp closures at Guildford Road are required.

## Asphalt and barrier work continue at night

This month we will be asphaltting and removing/relocating barriers at night at various locations across the project, and to carry out this work there will be lane and ramp closures. While asphaltting there may be noise, vibrations and you may notice a diesel-like smell when we apply the prime which is the initial treatment layer.

## METRONET Morley-Ellenbrook Line

### Traffic to travel over the northern dive structure soon

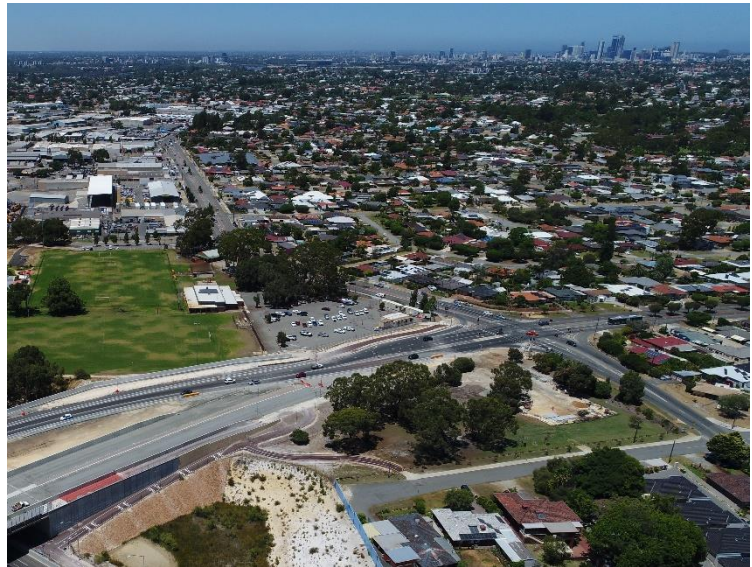
In March the team will complete profiling, barrier removal and asphaltting works to tie in the existing pavement on Tonkin Highway to the Northern Dive structure. When we switch traffic over the northern dive, there will be lane restrictions on Tonkin Highway southbound between Hepburn Avenue and Reid Highway during a weekend in late-March. Stay up to date on details at <https://www.mainroads.wa.gov.au/tonkin-gap/#roadworks> or on the Tonkin Gap Facebook Page closer to the date.

## Morley Station

Work has started on the Morley Station car park in the south-east corner of Broun Avenue and Tonkin Highway, with clearing and earthworks underway. The next stage will be drainage and service installation. We will also start building a new access road to the car park via Wotton Street.

### **Broun Avenue bridge and shared PSP**

We will be switching traffic onto the new Broun Avenue bridge in mid-March. To complete the switch, we will be closing Broun Avenue between Embleton Avenue and Beechboro Road North overnight. Local access for Cherry Court residents will be maintained via Mickleham Road. Once traffic is switched, there will still be lane restrictions in place while we complete the Broun/Embleton and Broun/Doyle intersection upgrade works. At the same time, pedestrians will use the northern side of the new bridge. This will enable us to continue working on the Morley Station bus interchange. Details of the closure will be communicated on the Main Road website and Tonkin Gap Facebook page.



*Broun/Embleton Avenue intersection works*

### **Asphalting works on Labour Day Public Holiday**

Pending approval, we will be asphaltting on Broun Avenue and on Tonkin Highway under Broun Avenue on the 6 March between 7am and 6pm. There will be some noise and vibrations during these works, and we thank you for your patience.

### **Broun Avenue and Embleton Avenue intersection work**

We are modifying the intersection at Broun Avenue and Embleton Avenue. The upgrade involves widening the intersection to accommodate a designated bus lane on Broun Avenue (eastbound) and extending turning pockets to improve traffic flow at the intersection. During the month we will continue removing the median on Broun Avenue on both sides of the intersection, service relocations and asphaltting works. Don't forget, until mid-2023 there is no right turn from Broun Avenue to Embleton Avenue in both directions.

### **Wotton Street and Embleton Avenue intersection**

Access to the Morley Station carpark will be via Wotton Street, so we're upgrading the intersection of Wotton Street and Embleton Avenue in preparation. The intersection will be widened to add separate turning lanes for drivers travelling left or right, and to improve pedestrian accessibility. Service relocation works, including ATCO Gas and Telstra, are scheduled to get underway this month. There will be traffic management in place during the works and some clearing of vegetation required.

## **Noranda Station**

### **Noranda Station car park**

Drainage and earthworks continue for the Noranda Station car park. During this work there will be dust, vibrations, and some noise. We have increased water carts in the area to mitigate as much dust as possible.

### **Benara Road underpass**

Works on the Benara Road underpass will continue in March. With sheet piling in the median now installed, and traffic switched to the southern side of Benara Road, we will continue earthworks to build the northern half of the underpass.



*Noranda station car park works*

Don't forget, traffic is reduced to one lane in each direction and shifted to the southern half of Benara Road. Speed is reduced to 40km/h while the northern half of the underpass is being built.

**Road users will temporarily not be able to turn right from Mahogany Drive onto Benara Road. A U-turn is available on Benara Road for the duration of these works.**

### Noranda Station platform

We are continuing drainage, detailed earthworks, the construction of platform footings, platform walls and deflection walls at the future Noranda Station platform in the median of Tonkin Highway.

## You're invited - Community Open House Event

Come and visit the teams from the Tonkin Gap Alliance, MELConnx and METRONET and chat about works for METRONET's Morley-Ellenbrook Line. You will have the opportunity to provide feedback and ask questions.

**When:** Wednesday, 22 March 2023

**Where:** Lightning Park

**Time:** Drop in anytime between 3pm to 7pm

## Out of hours works this month

In March our crews will be working out of hours (7pm until 7am) in our project area and along Tonkin Highway between Dunreath Drive and Hepburn Avenue. Dates are subject to change and specific details will be communicated on the Facebook page and Main Roads WA website. The works will occur at:

- Tonkin Highway between Redcliffe Bridge and Dunreath Drive
  - Intermittent night works in both directions
  - Barrier works, lane closures, drainage, pavement works, traffic management
- Tonkin Highway between Guildford Road and Redcliffe Bridge
  - Traffic management, asphaltting, traffic switch
- Great Eastern Highway between Epsom Avenue and Coolgardie Avenue
  - Intermittent night works in both directions
  - Pavement works, traffic management
- Redcliffe Bridge
  - Intermittent early starts from 3am
- Guildford Road and Railway Parade bridges
  - Patching and finishing works on the bridges
- Broun Avenue, between Embleton Avenue and Beechboro Road North
  - Traffic management, asphaltting, traffic switch
  - Intermittent Sunday work
  - Intermittent night work
- Tonkin Highway between Hepburn Avenue and Collier Road
  - Intermittent night work
  - Screen installation, bridge works, asphaltting, barrier works, traffic management

### What can I expect?

- Our work activity and vehicle movements may be noticeable across all areas. Noise and vibration management measures are in place, including use of the quietest equipment reasonably available.
- High noise level equipment will be located away from residential areas, and noisiest activities scheduled to take place earlier in the night. Work will be in accordance with a noise management plan approved by your local government authority. If you have concerns, please call 138 138 (24 hours).

### For more information on Tonkin Gap

**W:** <https://www.mainroads.wa.gov.au/tonkin-gap/>

**E:** [enquiries@mainroads.wa.gov.au](mailto:enquiries@mainroads.wa.gov.au)

**T:** 138 138 (24 hours)

**FB:** <https://www.facebook.com/groups/tonkingap/>

### For more information on the Morley-Ellenbrook Line

**W:** [www.metronet.wa.gov.au](http://www.metronet.wa.gov.au)

**E:** [info@metronet.wa.gov.au](mailto:info@metronet.wa.gov.au)

**T:** 08 9326 3666

**FB:** <https://www.facebook.com/groups/morley.ellenbrook>