

March 2022



Australian Government



mainroads  
WESTERN AUSTRALIA

**BUILDING OUR FUTURE**

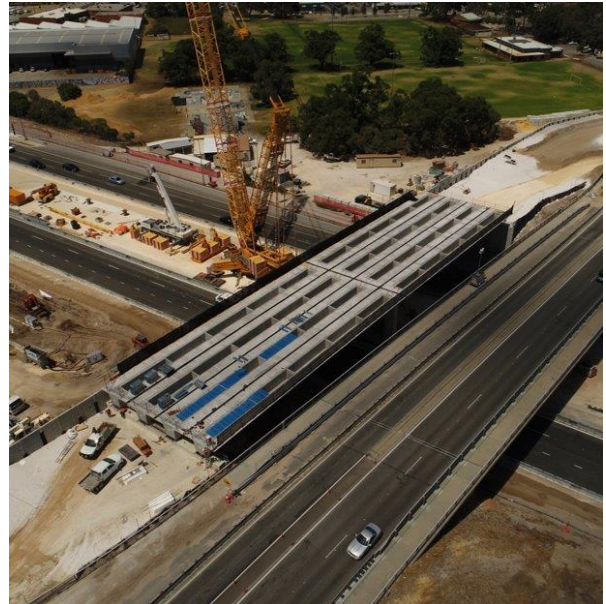
# Tonkin Gap Project and Associated Works Construction Update

**This update contains important information about upcoming works near you. Works below are anticipated from March but are subject to change. Some works will need to be undertaken on Sundays. Please drive carefully and observe the road signage. There is potential for longer than usual travel times and we encourage road users to plan ahead. Up to date information will be available through the Main Roads website and our Tonkin Gap Facebook page.**

## Broun Avenue bridge deconstruction

As part of the Tonkin Gap Project and Associated Works we are upgrading Broun Avenue to allow for traffic lanes, a bus interchange, and for the Morley Station to eventually be built in the Tonkin Highway median and form part of the new Morley-Ellenbrook Line.

Modifications to the existing Broun Avenue bridge are not possible and therefore the existing bridge will need to be deconstructed and rebuilt. We plan to deconstruct the existing bridge from the evening of Friday, 1 April to the morning of Monday, 4 April. There will be noise, vibration and dust, but we are working with the team to mitigate this as much as possible. We apologise for any inconvenience.



## Tonkin Highway closure

To allow for the deconstruction work to be completed safely, we will close Tonkin Highway in both directions between Morley Drive and Collier Road from the evening of Friday, 1 April to the morning of Monday, 4 April. We encourage road users to plan ahead, use the pre-capture detour at Reid Highway, and allow for extra travel time during this weekend.

## Broun Avenue extended closure

We plan to close Broun Avenue from 29 March to 26 April 2022 inclusive, between Embleton Avenue and Beechboro Road North. This is so we can prepare as much as possible in the lead up to the deconstruction of the bridge and then complete complex tie in works, including raising the height of the road at the bridge approaches, following the deconstruction. This will reduce the number of traffic stages on Broun Avenue and allow the team to carry out a lot of the work in one go. Our crews will be working during the day and at night to get as much work done as possible. Access to Cherry Court will be via Mickleham Road and access to BP, Charlie's and Snap Fitness will be via Beechboro Road North.

## Shared path impacts

The shared path across Broun Avenue bridge will be closed during the works and a detour in place. We will be working to get pedestrians and cyclists on the new bus interchange bridge as soon as possible after demolition has been completed.

## Detour maps

Detour maps will be confirmed in the coming weeks. To view the specific times and detour maps for both closures visit <https://www.mainroads.wa.gov.au/projects-initiatives/all-projects/metropolitan/tonkin-gap/>

## Dunstone Road

From 1 March we will re-open Dunstone Road to traffic. This will be under traffic management and reduced speed. We will need to again temporarily close Dunstone Road on 8 to 10 and 18 to 22 March to finish asphaltting, line marking and to install the bridge planks for the western bridge.

## Works between Dunstone Road and Guildford Road

Works continue behind River Road and Wyatt Road on the new collector-distributor lanes. You will start to see retaining walls being built and we will be exporting fill via Guildford Road. Dust and vibrations may be noticeable during this work.

## Slipform traffic barriers

We have installed 1.7km of the 22.6km permanent slipform barriers required for the project. These barriers will protect the rail corridor for the Morley-Ellenbrook Line and provide safety for road users along Tonkin Highway. There will be night works and lane closures while we paint these barriers.

## Noise wall construction

### River Road

Acrylic panels are being lifted into place on the noise walls behind River Road. We will also finish painting and property works in the area, and we thank every resident for their patience during the past few months.

### Redcliffe Primary School

Footings and posts will be installed this month.

### Selby Park and Greenshields Way

We will be building an access track so we can install the noise walls next to Selby Park and Greenshields Way, Belmont. We will then be installing the footings and posts. Vibrations may be noticeable while we build the track.

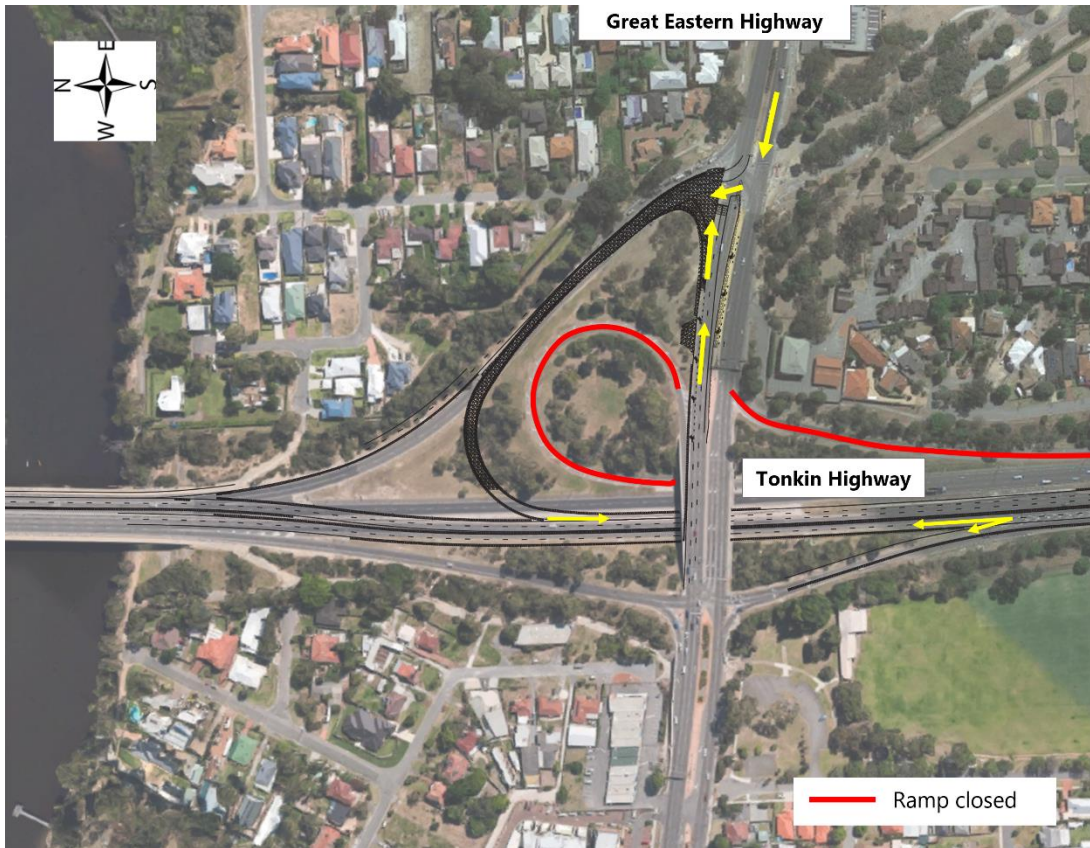


*Acrylic panel installation*

## Great Eastern Highway realignment

In late-March we plan to open the temporary southbound on-ramp from Great Eastern Highway to Tonkin Highway so road users can access the realigned southbound lanes (map 1). When the temporary on-ramp is opened, we will close the existing on-ramps to Tonkin Highway southbound from Great Eastern Highway.

There will be works happening during the day and at night in March leading up to the traffic switch. Once we have moved traffic onto the northbound lanes, we will be able to start the widening and rebuilding of Tonkin Highway southbound between Great Eastern Highway and Dunreath Drive.



Map 1

### Great Eastern Highway verge works

Last month we realigned Great Eastern Highway westbound so that we can start work on the verge west of Tonkin Highway between the northbound off-ramp and Lyall Street. This is so we can continue the Great Eastern Highway underpass extension and the new on and off ramp construction to Tonkin Highway northbound.

### Railway Parade and Guildford Road bridges

Three of the four bridge beam installations are now complete at Railway Parade and Guildford Road. During the month, we will be closing Railway Parade between Clavering Road and Wicks Street to install steel reinforcement cages and undertake pier column concrete pours for the final Railway Parade western bridge.

### Photo competition - winners announced

Congratulations to Justin who was the winner of our photo competition. It was very tough to choose just one winner, so we are awarding runner up prizes to Amy, Millie and Lilah, Shaz and Dorothy! We will be in contact in the coming days. We loved seeing everyone's photos and you will start to see them on our Facebook page and Construction Updates.



Photo by Justin

## Out of hours works this month

In March our crews will be working out of hours (7pm until 7am and Sundays) in our project area and along Tonkin Highway between Dunreath Drive and Hepburn Avenue. Specific details, including dates and locations, will be posted on the Facebook page and Main Roads WA website.

The works will occur at:

- Tonkin Highway between Redcliffe Bridge and Dunreath Drive
  - Intermittent night works in both directions
  - Barrier installation, line marking, temporary pavement construction and traffic switch
- Great Eastern Highway between Epsom Avenue and Coolgardie Avenue
  - Intermittent night works in both directions
  - Barrier works, line marking, asphaltting and traffic switch
- Redcliffe Bridge casting yard in Ascot
  - Intermittent 3am starts (approx. four mornings per month)
  - Concrete pours for bridge works
- Broun Avenue between Embleton Avenue and Beechboro Road North
  - Intermittent night works on Broun Avenue
  - Night time concrete pours from 12am at new bridge
  - New pavement and lane construction
  - Retaining wall construction adjacent to Tonkin Highway southbound (near Mickleham Drive, Cherry Court and Beechboro Road)
  - Deconstruction of existing bridge
- Tonkin Highway between Hepburn Avenue and Collier Road
  - Intermittent night works in both directions
  - Tonkin Highway widening, pavement, slipform traffic barrier install and road works
- Morley Drive on-ramp to Tonkin Highway southbound
  - Intermittent night works
  - Ramp realignment
- Tonkin Highway (north of Railway Parade)
  - 5am concrete pours at southern dive structure
- Railway Parade and Guildford Road near Tonkin Highway
  - Intermittent night works
  - Bridge works and early morning concrete pours

### What can I expect?

- Works and vehicle movements may be noticeable across all areas. Noise and vibration management measures are in place, including use of the quietest equipment reasonably available.
- High noise level equipment will be located away from residential areas, and noisiest activities scheduled to take place earlier in the night. Works will be in accordance with a noise management plan approved by your local government authority. If you have concerns about our works, please call 138 138 (24 hours).

### For more information on Tonkin Gap

**W:** <https://www.mainroads.wa.gov.au/tonkin-gap/>

**E:** [enquiries@mainroads.wa.gov.au](mailto:enquiries@mainroads.wa.gov.au)

**T:** 138 138 (24 hours)

**FB:** <https://www.facebook.com/groups/tonkingap/>

### For more information on the Morley-Ellenbrook Line

**W:** [www.metronet.wa.gov.au](http://www.metronet.wa.gov.au)

**E:** [info@metronet.wa.gov.au](mailto:info@metronet.wa.gov.au)

**T:** 08 9326 3666

**FB:** <https://www.facebook.com/groups/morley.ellenbrook>