

June 2022



Australian Government



mainroads  
WESTERN AUSTRALIA

**BUILDING OUR FUTURE**

# Tonkin Gap Project and Associated Works Construction Update

**This update contains important information about upcoming works near you. Works below are anticipated for June but are subject to change, particularly with the wet weather. Some works will need to be undertaken on Sundays. Please drive carefully and observe the road signage. There is potential for longer than usual travel times and we encourage road users to plan ahead. Up to date information will be available through the Main Roads website and our Tonkin Gap Facebook page.**

## Railway Parade bridge beam lift

From Friday, 10 June until 4am Monday, 13 June, we will be installing 12 bridge beams for the western Railway Parade bridge. These will be the final bridge beams installed at Guildford Road and Railway Parade, which marks a significant milestone for the upgrade of Tonkin Highway, and another step towards eliminating the infamous Tonkin Highway bottleneck.

To assist with installing the bridge beams we will be switching Tonkin Highway northbound traffic onto the Tonkin Highway southbound lanes between Redcliffe Bridge and north of Railway Parade. Traffic will be reduced to a single lane in each direction on Saturday, 11 June overnight from 8pm to 8am, and Sunday, 12 June from 7pm to 4am. Guildford Road on and off ramps to Tonkin Highway northbound will be closed on Saturday and Sunday night and a detour in place. During the day, Tonkin Highway will open in both directions.



*Railway Parade*

## Midland Line weekend rail shut

To allow for the bridge beams to be safely lifted over the train line, the Midland Line will be closed from 4am Saturday, 11 June to 4am Monday, 13 June. Moojebing Street rail crossing will also be closed during this time and a detour will be in place. Train replacement bus services will operate during this line shutdown. For more details, including the closure times and operation of train replacement services, please visit [transperth.wa.gov.au](https://www.transperth.wa.gov.au) closer to the date.

## Detours

Please follow on-road signage, and to view specific times and the detour map visit <https://www.mainroads.wa.gov.au/tonkin-gap/#roadworks>. Thank you for your patience while we undertake these important works.

## Great Eastern Highway underpass extended closure

When we started excavating at Great Eastern Highway underpass, we came across unexpected ground conditions. Because of this we need to change the way we modify the underpass and this means the works will take longer than originally planned, with the underpass remaining closed until late 2022. We understand this extended closure

will inconvenience some residents, however, due to the area being a live construction site, we are unable to reopen the underpass until it is complete. We are exploring other options to reopen the underpass sooner, or create an alternative pedestrian access, but the current detour will remain in place while we examine the options.

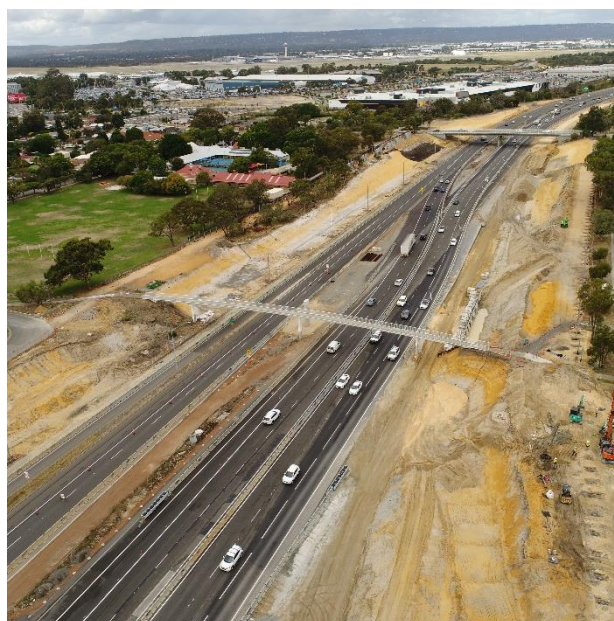
## Tonkin Highway between Redcliffe Bridge and Dunreath Drive

You may have noticed traffic has been successfully switched onto the new temporary Great Eastern Highway southbound ramp to Tonkin Highway. We will now begin to remove existing asphalt so we can rebuild and widen Tonkin Highway southbound lanes and ramps.

There will be ongoing earthworks in the area which may cause noise, vibrations and dust. The majority of the works will happen during the day, however, there will be the need for intermittent night works.

## Victoria Street footbridge upgrade

We are replacing the existing Victoria Street footbridge, with a new bridge which is longer, wider and higher to allow for additional traffic lanes to be built on Tonkin Highway. The new footbridge will be a better experience for pedestrians and cyclists. We plan to carry out the work from Saturday, 30 July to the morning of Monday 1 August. We will need to close Tonkin Highway in both directions from Great Eastern Highway to Dunreath Drive. Further details will be released in the July update. Please plan your route and allow for extra travel time during this weekend.



## Broun Avenue works

Works on the second stage of Broun Avenue bridge are well underway. Construction of the bridge piers and abutment footings have started. We are preparing the bridge for the installation of the MSE (mechanically stabilised earth) panels at the end of the month.

## Benara Road directional signage

Tonkin Highway northbound will be closed at night between Morley Drive and Reid Highway for three consecutive nights late-June while we re-install the directional signage near Benara Road. Dates and times will be released via the Main Roads website or Tonkin Gap Facebook page.

## Line marking and water blasting

We have ongoing line marking maintenance work along Tonkin Highway between Dunreath Drive and Hepburn Avenue, as well as on Broun Avenue and Great Eastern Highway. We are using a water blasting machine to remove existing lines, and there will be noise during these works. We'll do this work at night as we cannot close lanes on Tonkin Highway during the day. To stay up to date on upcoming works visit

<https://www.mainroads.wa.gov.au/tonkin-gap/#roadworks>.

## Great Eastern Highway and Tonkin Highway

### Service cable installation under the road

We will be starting to install service cables under the road in various locations along Tonkin Highway and at Broun Avenue. This will involve us cutting the asphalt so we can lay service cable underground. This work has to be undertaken at night as we need to close two highway lanes. A road saw will be used to cut through the asphalt and there will be noise during these works. We understand that noisy works may be disruptive, and we apologise for the inconvenience.

### Service cable installation

The team will continue to install new service cables under Tonkin Highway. While we complete this work, there may be intermittent ramp closures and night works. To stay up to date on upcoming works and closures visit <https://www.mainroads.wa.gov.au/tonkin-gap/#roadworks>.

## Noise wall progress

Noise walls are now installed behind Redcliffe Primary School, adjacent to Greenshields Way and along Selby Park.

## Dive structures update

### Northern dive structure

We have recently finished the piling works for the northern dive structure. This month the team will continue excavation and concrete works.

### Southern dive structure

The team will continue working more than seven metres underground to finish excavation works for the southern dive structure. There will be cranes and concrete pumps on site while the team pours concrete for the base slabs.



Southern dive

## Intermittent closures on Dunstone Road

Intermittent closures or stop/slow on Dunstone Road will continue. On Wednesday, 15 June there will be a full Dunstone Road closure during the day. This is so we can install the permanent traffic barriers on the new Dunstone Road western bridge. For safety reasons, a full closure is required as we cannot complete works over live traffic. These works are subject to change so please keep up to date on the website.

## Wet weather

As we head into the winter months, cold temperatures and wet weather can unfortunately impact the timing of our works. There are certain activities that are required to be completed during warm and dry conditions. One of these activities is asphaltting. Depending on the weather conditions we may need to reschedule works or complete works on a weekend or at night. Please stay up to date on the Main Roads website.

## Remember to call 138 138 if you have a question

Don't forget that we have a 24/7 call centre to help you with any questions or concerns you might have. If you need to contact us for any reason, at any time, please call 138 138. If the call is outside normal working hours, we can contact the Project Duty Manager to address the concern at the time call.

## Out of hours works this month

In June our crews will be working out of hours (7pm until 7am and the occasional Sundays) in our project area and along Tonkin Highway, between Dunreath Drive and Hepburn Avenue. Specific details, including dates and locations, will be posted on the Facebook page and the Main Roads website.

The works will occur at:

- Tonkin Highway, between Redcliffe Bridge and Dunreath Drive
  - Intermittent night works in both directions
  - Barrier installation, line marking and line marking removal
  - Use of a road saw to cut through asphalt to lay new service
- Tonkin Highway between Guildford Road and Redcliffe Bridge
  - Traffic management, barrier works and asphaltting
- Great Eastern Highway, between Epsom Avenue and Coolgardie Avenue
  - Intermittent night works in both directions
  - Barrier works, asphaltting, street light removal and traffic management
- Broun Avenue, between Embleton Avenue and Beechboro Road North
  - Intermittent night works on Broun Avenue
  - Use of a road saw to cut through asphalt to lay new service cables
- Tonkin Highway, between Hepburn Avenue and Collier Road
  - Intermittent night works in both directions
  - Highway widening, pavement, slipform traffic barrier install, traffic barrier works and road works
  - Use of a road saw to cut through asphalt to lay new service
- Morley Drive
  - Intermittent night works and ramp closures
- Tonkin Highway (north of Railway Parade)
  - 5am concrete pours at southern dive structure
- Railway Parade and Guildford Road, near Tonkin Highway
  - Intermittent night works
  - Bridge beam installation, bridge works and early morning concrete pours

### What can I expect?

- Works and vehicle movements may be noticeable across all areas. Noise and vibration management measures are in place, including use of the quietest equipment reasonably available.
- High noise level equipment will be located away from residential areas, and noisiest activities scheduled to take place earlier in the night. Works will be in accordance with a noise management plan approved by your local government authority. If you have concerns about our works, please call 138 138 (24 hours).

#### For more information on Tonkin Gap

**W:** <https://www.mainroads.wa.gov.au/tonkin-gap/>

**E:** [enquiries@mainroads.wa.gov.au](mailto:enquiries@mainroads.wa.gov.au)

**T:** 138 138 (24 hours)

**FB:** <https://www.facebook.com/groups/tonkingap/>

#### For more information on the Morley-Ellenbrook Line

**W:** [www.metronet.wa.gov.au](http://www.metronet.wa.gov.au)

**E:** [info@metronet.wa.gov.au](mailto:info@metronet.wa.gov.au)

**T:** 08 9326 3666

**FB:** <https://www.facebook.com/groups/morley.ellenbrook>