

February 2023



Australian Government



Tonkin Gap Project and Associated Works

Construction Update

This update contains important information about upcoming works near you. Works below are anticipated from February but are subject to change. Some works will need to be undertaken on Sundays. Please drive carefully and observe the road signage. There is potential for longer than usual travel times and we encourage road users to plan ahead. Up to date information will be available through the Main Roads website and our Tonkin Gap Facebook page.

Tonkin Highway between Dunreath Drive and Great Eastern Highway

This month you will see bulk excavation work along the verge of Tonkin Highway northbound on-ramp and we will remove pavement and drainage in this area. This is so the team can start works on the northbound on-ramp from Great Eastern Highway and prepare to switch traffic onto a temporary alignment in March.

There will be ongoing earthworks in the area which may cause noise, vibrations and dust. Works will be during the day, at night and on some weekends. There will also be ramp closures throughout February while we complete these works. Stay up to date on the 'Roadworks' page on the Main Roads website and the Tonkin Gap Facebook page for details.

Tonkin Highway southbound on-ramps from Great Eastern Highway now reactivated

In late-January we opened the new Tonkin Highway southbound on ramps from Great Eastern Highway and closed the temporary on-ramp. This means, vehicles traveling westbound will turn left to enter Tonkin Highway, and vehicles traveling eastbound continue to turn left to enter Tonkin Highway. The Tonkin Highway southbound off-ramp to Dunreath Drive has also been temporarily moved further north, so please pay attention to on-road signage. Following this switch, in February the team will realign Tonkin Highway southbound traffic onto the new permanent southbound lanes.

Street light installation

We will start to install new street lights on Tonkin Highway southbound off-ramp to Dunreath Drive. These works will be completed at night as there will be ramp and lane closures.

Great Eastern Highway works

Works on Great Eastern Highway will continue during the day and at night to build the new Great Eastern Highway westbound lanes between Tonkin Highway and Morrison Street.

Great Eastern Highway underpass opening this month

The team has been working to complete the Principal Shared Path (PSP) tie in works between the new Selby Park footbridges and the underpass. We anticipate having the underpass and access over the Selby Park bridges open in early February, with finishing works once the underpass is open. Thank you again for your patience while we have had this underpass closed.

Great Eastern Highway directional signage to be re-installed

In mid-February we plan to start the installation of the new directional gantry signage on Great Eastern Highway. So we can build the piling pad and complete these works, we will need to close the footpath on Great Eastern Highway

eastbound between The Ascot Apartments and Tonkin Highway for approximately two months. Stay up to date on the Main Roads website and Facebook page for the specific dates and detour map.

Redcliffe Bridge pushes on

This month we'll continue to install noise walls along the bridge deck, and complete the remaining bridge works and retaining walls.

During the warmer days, the crews will start work before 7am across the project, particularly when we are working with concrete, steel, asphalt and paint.

Dunstone Road works almost done

This month there will be intermittent stop/slow traffic management and nightworks on Dunstone Road. This will allow the team to complete works on the existing bridge traffic barriers and paint the noise walls on the bridges. Pending approval, there will also be a contraflow traffic arrangement put in place for two day shifts in February. This is so we can install the permanent traffic barriers. Stay up to date on the 'Roadworks' page on the Main Roads website and the Tonkin Gap Facebook page for details.



Cofferdam removal at Redcliffe Bridge

Tonkin Highway between Guildford Road and Redcliffe Bridge

We will continue profiling and asphaltting works along Tonkin Highway between Guildford Road and Redcliffe Bridge ahead of switching traffic on to the new Tonkin Highway southbound lanes. There will be lane and ramp closures at night while we complete this work.

Railway Parade and Guildford Road bridges in final stages

Intermittent lane closures at night will be required on Railway Parade and Guildford Road, while we install bridge formwork and complete rock pitching work on the existing bridges. Details regarding dates and times of lane closures can be found on the Main Roads website.

Loop cutting work on Tonkin Highway

In late-February, we will be intermittently working at night on Tonkin Highway between Collier Road and Reid Highway so we can install services under the asphalt. There will be noise during these works, including the use of an asphalt saw. We understand that noisy work can be disruptive, and we apologise for the inconvenience. If you have any concerns during any noisy work, please call 138 138 (24 hours).

METRONET - Rail-enabling work at Morley

Pending approvals, additional clearing and earthworks will start for the Morley Station car park in the south-east corner of Broun Avenue and Tonkin Highway. The first stage of work will include drainage and service installation. We will also start construction on a new access road to the car park via Wotton Street and excavation and foundation works for the platform footings and walls in the median of Tonkin Highway.

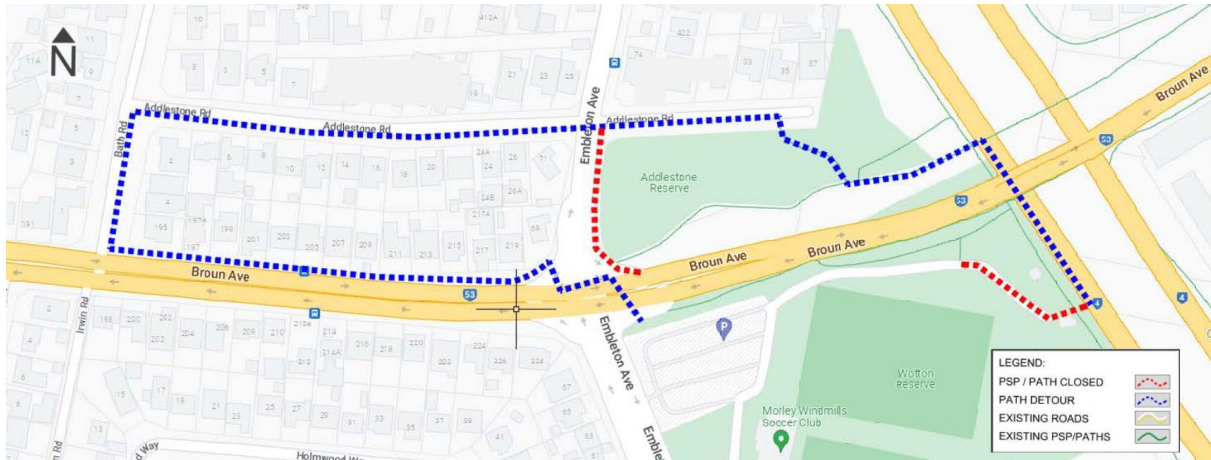
Broun Avenue bridge and Embleton Avenue intersection work

As part of the Broun Avenue and Embleton Avenue intersection upgrade, we will be shifting traffic to a temporary alignment across Broun Avenue bridge. This will allow the team to start building the new dedicated bus lane and extend the Broun Avenue eastbound right turning pocket. This stage of the intersection upgrade will begin in late-February and be ongoing until mid-March. While underway, Broun Avenue eastbound will be reduced to one lane between Irwin Road and the Broun Avenue bridge. At the Broun Avenue and Embleton Avenue intersection there will be no right turn from Broun Avenue in either direction, and no right turn from Embleton Avenue southbound to

Broun Avenue westbound. Asphaltting will be underway in preparation for switching traffic onto the new Broun Avenue bridge.

Principal Shared Path reopened under Broun Avenue bridge

We recently re-opened the PSP under the Broun Avenue bridge for people travelling along Tonkin Highway. There are still some path detours in the area (see below).



METRONET - Noranda Station works

Noranda Station car park

Earthworks to install an underground stormwater storage system for the future Noranda Station car park is underway. During this work there will be noise, dust and vibrations. From 3 February, works will commence in this area at 6am to complete early morning concrete pours.

Benara Road underpass

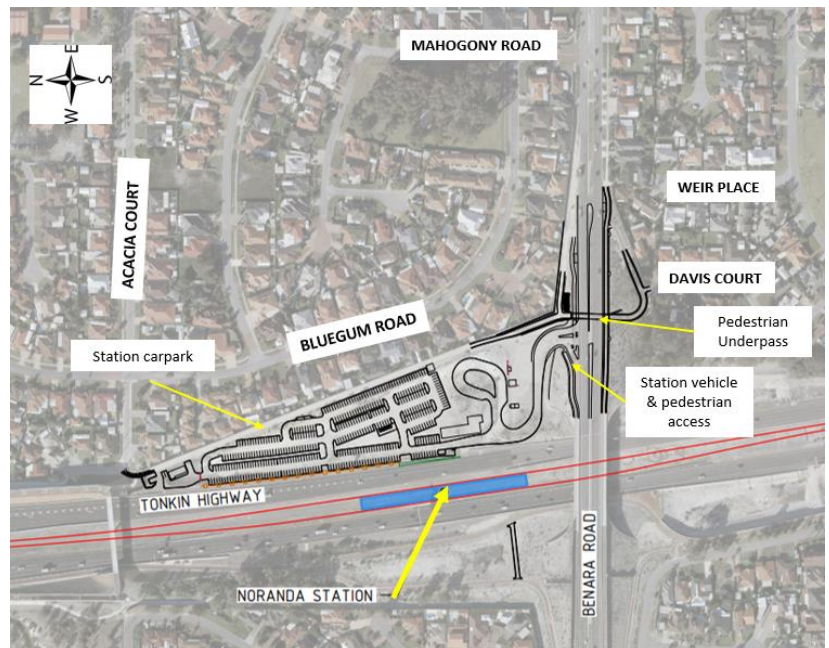
Works have commenced on the Benara Road underpass to provide access to the new Noranda Station from Davis Court on the southern side of Benara Road. This includes median demolition and preparation works on Benara Road.

To implement the contraflow and traffic changes, on 5 February, we will close Benara Road between Della Road and Mahogany Road from 9pm to 5am. Following this work

and from 6 February, traffic will be reduced to one lane in each direction and shifted to the southern half of Benara Road. Speed will be reduced to 40km/h while the northern half of the underpass is being built.

When these traffic changes are implemented, road users will temporarily not be able to turn right from Mahogany Drive onto Benara Road and will need to complete a U-turn to head westbound at the pre-existing U-turn for the duration of these works. Visit Main Roads website for details and detour maps.

Once the traffic changes have been implemented, we will begin sheet piling in the Benara Road median, with earthworks in the northern half of the underpass to follow. During these works there will be dust, vibrations and noise. We will work to minimise this as much as possible.



Location of Benara works

Noranda Station platform

The team has now finished the bored piles for the station platform deflections walls and the pedestrian overpass columns. Next, we will start drainage, detailed earthworks, construction of platform footings, platform walls and deflection walls.

Asphalt work

During February we will be asphaltting at night at various locations across the project and to carry out this work there may be traffic management in place including lane closures. While asphaltting there may be noise, vibrations and you may notice a diesel-like smell when we apply the prime which is the initial treatment layer.

Out of hours works this month

In February our crews will be working out of hours (7pm until 7am) in our project area and along Tonkin Highway between Dunreath Drive and Hepburn Avenue. Dates are subject to change and specific details will be communicated on the Facebook page and Main Roads WA website. The works will occur at:

- Tonkin Highway between Redcliffe Bridge and Dunreath Drive
 - Intermittent night works in both directions
 - Barrier works, lane closures, pavement works, traffic management traffic switch
 - Traffic signal modifications
- Tonkin Highway between Guildford Road and Redcliffe Bridge
 - Traffic management, traffic barrier installation, pavement removal
- Great Eastern Highway between Epsom Avenue and Coolgardie Avenue
 - Intermittent night works in both directions
 - Pavement works, traffic management
 - Traffic signal modifications
- Redcliffe Bridge
 - Intermittent early starts
 - Early morning concrete pours for traffic barrier installation
- Railway Parade and Guildford Road, near Tonkin Highway
 - Intermittent night works and traffic barrier removal
 - Finishing works on Railway Parade bridges
- Broun Avenue, between Embleton Avenue and Beechboro Road North
 - Traffic management, barrier relocation and early concrete pours for bridge approach barriers
 - Intermittent Sunday work
 - Intermittent night work
- Tonkin Highway between Hepburn Avenue and Collier Road
 - Intermittent night work
 - Tonkin Highway widening, bridge modifications, traffic barrier work and roadwork
 - E-screen installation

What can I expect?

- Our work activity and vehicle movements may be noticeable across all areas. Noise and vibration management measures are in place, including use of the quietest equipment reasonably available.
- High noise level equipment will be located away from residential areas, and noisiest activities scheduled to take place earlier in the night. Work will be in accordance with a noise management plan approved by your local government authority. If you have concerns, please call 138 138 (24 hours).

For more information on Tonkin Gap

W: <https://www.mainroads.wa.gov.au/tonkin-gap/>

E: enquiries@mainroads.wa.gov.au

T: 138 138 (24 hours)

FB: <https://www.facebook.com/groups/tonkingap/>

For more information on the Morley-Ellenbrook Line

W: www.metronet.wa.gov.au

E: info@metronet.wa.gov.au

T: 08 9326 3666

FB: <https://www.facebook.com/groups/morley.ellenbrook>