

Tonkin Gap Project and Associated Works

Construction Update

This update contains important information about upcoming work near you early in the New Year.

Thank you for your patience and understanding since we started works on the Tonkin Gap Project. We are taking a break for Christmas from 18 December 2020 until 4 January 2021. We wish you all a Merry Christmas and happy New Year.

During our Christmas break our Customer Information Centre will still be available for enquiries 24/7. If your request is urgent you will be passed onto the project Duty Manager. Otherwise, the team will respond upon our return.

1. Vegetation clearing

The next stage of vegetation clearing will start early January 2021 (locations shown on map 1).

When and where?

- From 4 January until 31 January 2021
 - South-east side of Redcliffe Bridge
 - Tonkin Highway at Guildford Road and Railway Parade to start construction of the two new bridges
 - Tonkin Highway near Dunstone Road and behind Wyatt Road and River Road



Map 1

2. Guildford Road and Railway Parade bridge construction

What work will we be doing?

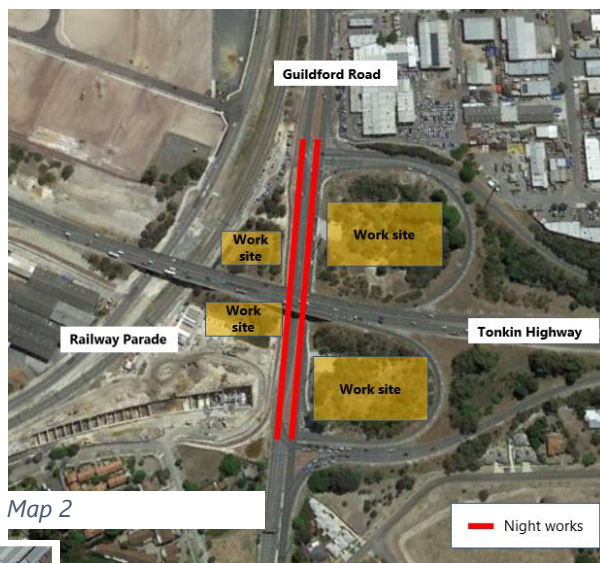
To prepare for the construction of the new bridges over Guildford Road and Railway Parade we will be starting preliminary works including further clearing, earthworks, removal of barriers and existing fencing.

Night works

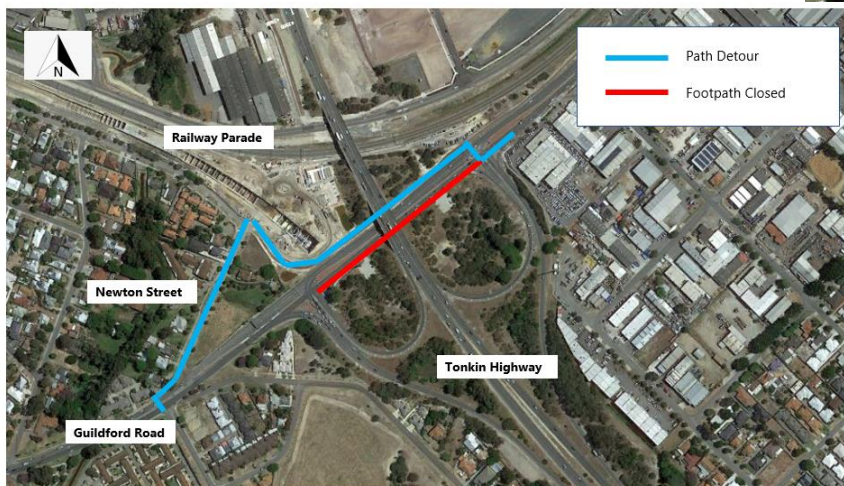
To allow for these works to happen we will initially need to work at night to avoid peak traffic. This will involve shifting the traffic lanes sideways on Guildford Road (see locations on map 2). Once the site has been established trucks will be entering and exiting the work sites in both directions during the day.

When?

- From early January 2021



Map 2



Map 3

Footpath detour

While we are working in this area, we will need to detour the footpath until further notice.

When and where?

- Early January 2021
- Footpath closed south side of Guildford Road (map 3)

3. New bridge construction over the Swan River

Once the sheet piling which retains the side of Tonkin Highway is complete, we will continue earthworks near the casting yard area and start construction of the casting yard and temporary 'cofferdams' in the Swan River (subject to Department of Biodiversity, Conservation and Attractions (DBCA) approval). Cofferdams are temporary structures used when construction is undertaken in areas submerged in water. During construction, the river will remain open to river users. We will provide more information in January.

Earthworks and Casting Yard preparation

Earthworks involve excavating the casting yard to a lower level, pouring a concrete pad and installing temporary formwork, which is used for constructing the bridge segments (map 4).

When?

- From early January 2021

Cofferdam construction

The temporary cofferdam construction in the Swan River is to enable construction works for the new bridge piers (map 4). We have been liaising with DBCA to ensure our construction methodology complies with its requirements.

When?

- From late January 2021



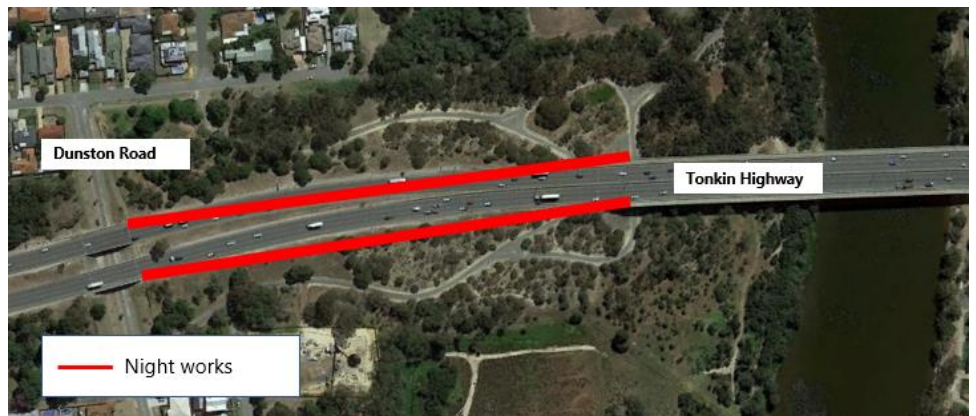
Map 4

4. Fill placement

We will continue delivering fill south of Redcliffe Bridge on either side of Tonkin Highway throughout January.

Night works

As the fill stockpile gets closer to the road, we will be adjusting the line marking to create more room along Tonkin Highway, and installing a temporary traffic barrier. This will create a safe work zone for our crews on site and maintain traffic flow (map 5). Once the barrier is in place the speed will reduce to 80km/h on Tonkin Highway in both directions between Great Eastern Highway and Dunstone Road until further notice.



Map 5

When?

- From mid-January 2021

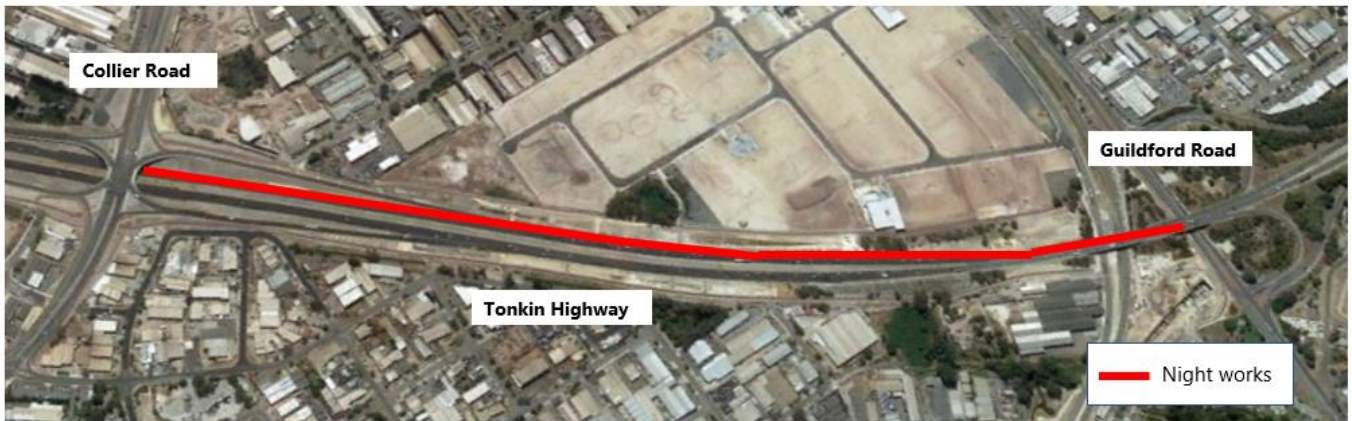
5. Widening of Tonkin Highway

Night works

From mid-January 2021 we will start the widening of Tonkin Highway southbound between Collier Road and Guildford Road. This will initially involve the deployment of barriers at night. Once the barriers have been installed the speed will reduce to 80km/h in this area until further notice.

Where?

Tonkin Highway southbound between north of Collier Road to Guildford Road (map 6)



Map 6

6. Morley-Ellenbrook Line enabling works

In January 2021 we will continue working in the median of Tonkin Highway at Reid Highway interchange and Benara Road intersection. A speed reduction to 80km northbound from south of Benara Road to north of Reid Highway is still in place.

Out of hours work

Concrete pour at Tonkin Highway and Benara Road intersection

As part of the rail enabling works for METRONET's Morley-Ellenbrook Line, we have started pouring concrete for the pier protection. We can only pour concrete when the temperature is cooler, therefore, we will sometimes need to start work before 7am.

When and where?

- From 15 December 2020 until further notice
- Tonkin Highway median at Benara Road intersection

How will these works affect me?

- Works, vehicle and machinery movements will be noticeable
- We will make every effort to minimise construction noise and vibrations where possible, particularly during night works
- Noise and vibration management measures are in place including use of the quietest equipment reasonably available
- Works will be in accordance with a noise management plan approved by your local government authority
- We will use water carts, street sweepers and dust suppressants to reduce the impact of dust



Contact us for further information on Tonkin Gap

W: <https://www.mainroads.wa.gov.au/projects-initiatives/projects/metropolitan/tonkin-gap/>

FB: <https://www.facebook.com/groups/tonkingap/>

E: enquiries@mainroads.wa.gov.au

T: 138 138 (24 hours)