

August 2021



Australian Government



mainroads
WESTERN AUSTRALIA

BUILDING OUR FUTURE

Tonkin Gap Project and Associated Works Construction Update

This update contains important information about upcoming works near you. Works below are anticipated for August but may be weather dependent. To stay on track, we will also need to work on some Sundays.

Please drive carefully and observe the signage on the road. There is potential for longer than usual travel times and we encourage road users to plan ahead. Up to date information will be available through the Main Roads website and our Tonkin Gap Facebook page.

Don't forget – community open house event this week!

Come and visit the design, construction and environmental teams from the Tonkin Gap Alliance. You will have the opportunity to see the latest concept designs for the project and ask questions of the team.

When: Wednesday, 4 August

Where: Bayswater Drill Hall, Cnr Murray and, Crowther St, Bayswater WA 6053

Time: Drop in anytime between 3pm until 7pm

1. 'Super stage' coming soon

You will soon see more temporary traffic changes along Tonkin Highway to allow rail-enabling works for Morley- Ellenbrook Line. Tonkin Highway will be reduced to two through lanes, in both directions between Reid Highway and Collier Road until late 2022.

What is the 'super stage'? The 'super stage' is a single consistent traffic stage that will allow multiple areas to be worked on at the same time. This configuration will be in place for a longer time avoiding multiple different traffic arrangements throughout the project during the next year. Find out more here

<https://www.mainroads.wa.gov.au/tonkin-gap#whats-happening>.

2. Great Eastern Highway interchange upgrade and widening of Tonkin Highway

Last month we started clearing southbound between Great Eastern Highway and Dunreath Drive. This month you will continue to see mulching and topsoil removal, as well as earthworks for the new southbound lanes along Tonkin Highway.

Great Eastern Highway services relocation works

This work continues to be the focus for August. Intermittent lane closures, night work and speed reductions will be in place between Lyall Street and Morrison Street. Visit the Main Roads website for details.

Once the underground services have been relocated, we will start building two new footbridges in Selby Park, and widen the Great Eastern Highway underpass to upgrade the Pedestrian Shared Path (PSP). These shared path upgrades are part of a vision to make WA a place where riding is a safe, connected, convenient and a widely accepted form of transport.

Sewage relocation works

Water Corporation will be relocating the sewage pipes at the corner of The Court and Victoria Street in Redcliffe. Traffic management will be in place so we can complete this work safely.

3. Preparing for noise wall construction

Bayswater residents - thank you for your patience while we have been working behind your properties to prepare for noise wall construction.

Noise walls near residential properties are now confirmed at the locations below (map 1). Next month, we will start construction behind Wyatt Road, followed by River Road. The noise walls at road level will be built once the new bridges and roads are complete. We will keep you posted on the final noise wall designs. View our latest noise walls construction FAQ - <https://www.mainroads.wa.gov.au/tonkin-gap#whats-happening>.



Map 1 - Approximate noise walls location in Bayswater

4. Guildford Road and Railway Parade works push ahead

The rain hasn't stopped us working at Guildford Road and Railway Parade. All four bridges are making headway, with the first mechanically stabilised earth (MSE) panels lifted into place for the abutment walls, as well as the bridge column reinforcement cages. We are also getting ready to start lifting our underpass structures into place.

Building Guildford Road underpasses

The crane pad is built and now it's time to start installing the pre-cast segments and walls of the underpasses. Interested in how an underpass gets constructed? Ours won't be quite this quick but check out the Gateway WA video - <https://www.youtube.com/watch?v=Fvj6YqYvM60>.

Midland rail shut to work on Railway Parade bridges

To build the new bridges on Railway Parade, we need to lower the power lines so we can lift the bridge beams into place. The rail line will be shut from Friday evening, 13 August to last service Sunday, 15 August to reposition the overhead line equipment. This allow us to lift the bridge beams into place later this year. Stay up to date on the rail shut <https://www.transperth.wa.gov.au/Track-Closures/Planned-Works-Calendar/Planned-Works-Details/10842>

More steel reinforcement cages lifted this month

We will be lifting more steel reinforcement cages into place for our Railway Parade bridges during the day in August. To do this work we will need to close Railway Parade on occasion from 6am until 6pm between Clavering Road and Wicks Street.

Guildford Road temporary ramp works

To continue building the temporary pavement and switch traffic onto the new ramps, we will be working at night on Guildford Road on and off-ramps from Tonkin Highway. The southbound ramps will close intermittently at night for approximately two weeks with a detour in place. Visit the website for detour information.

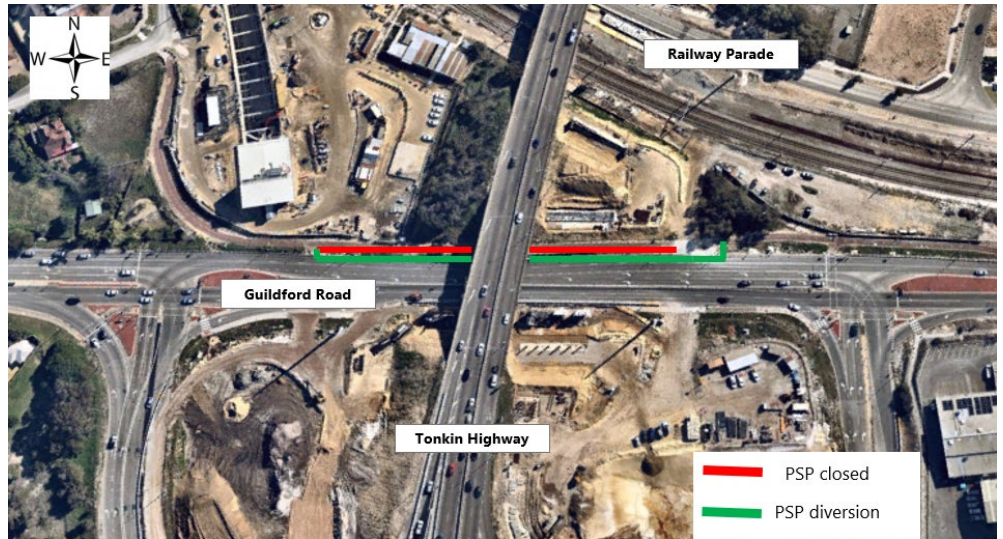
Eastern bridge night works

To minimise the impact to road users, from mid-August we will be working at night on Guildford Road to install new steel barriers on the eastbound traffic lanes.

This is so we can shift traffic south to enable the team to construct the north-east Guildford Road bridge piers.

Pedestrians and cyclists

At this time, we will also divert pedestrians and cyclists onto the road until early-2022 (map 2).



Map 2

5. Night works required across the project

In August our crews will be working between 7pm and 5am along Tonkin Highway between Dunreath Drive and Hepburn Avenue. Intermittent lane and ramp closures will be in place during the work. In case of inclement weather, there might be an increase in night works across the project. Thank you for your patience.

6. Morley-Ellenbrook Line rail-enabling works

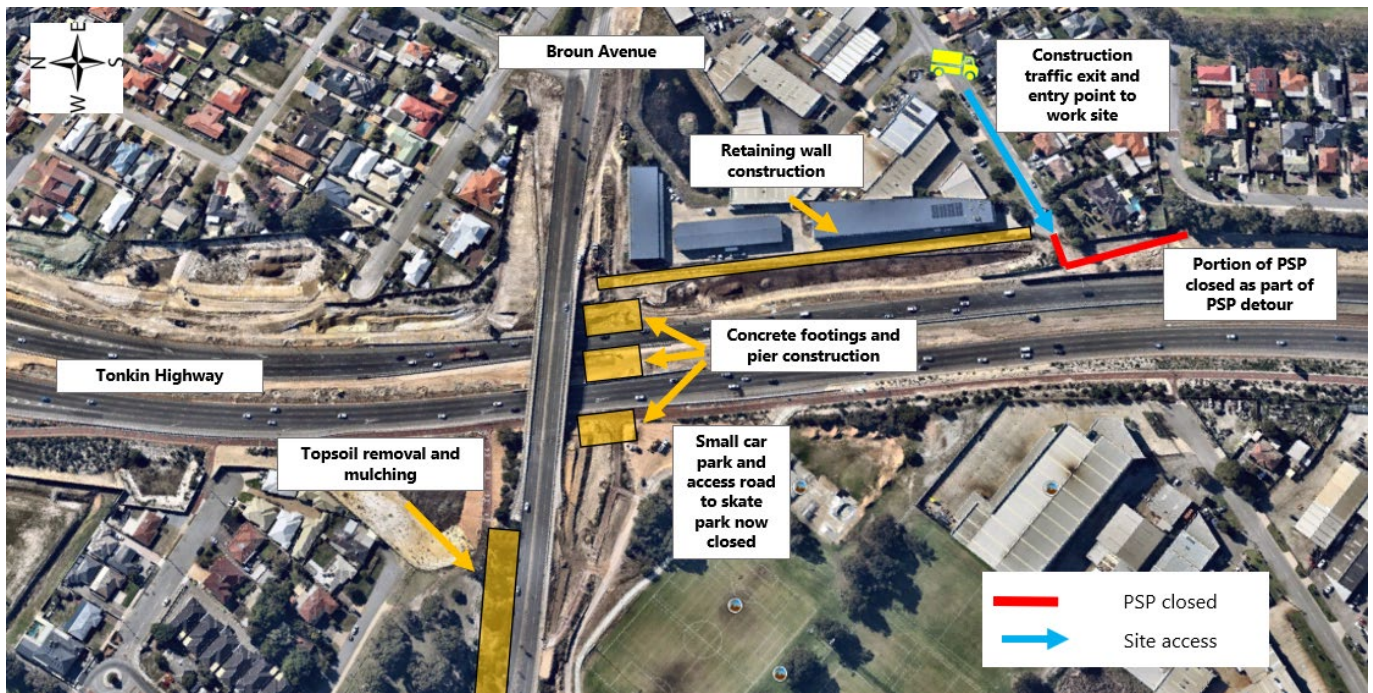
As part of the rail-enabling works for METRONET's Morley-Ellenbrook Line we will continue to work in the median of Tonkin Highway from Marshall Road to Collier Road. In August, work includes construction of deflection walls, sheet piling and earthworks in the median. At times you may feel vibrations and hear noise from this work. Please contact the project team on 138 138 if you have any concerns.

Northern Dive construction near Marshall Road

Clearing works have started and from early-August you may notice further changes on Tonkin Highway near Marshall Road, in both directions. Traffic will be shifted west so we can build the Morley-Ellenbrook Line northern dive structure. This will be where the train exits the median of Tonkin Highway and travels to the new Malaga train station.

Broun Avenue bridge works

Construction is well underway on both sides of Broun Avenue, and in the median of Tonkin Highway, to prepare for a new bridge over Tonkin Highway. The bridge will accommodate the new Morley Station in the Tonkin Highway median and form part of the Morley-Ellenbrook Line. Find out more on how the bridge will be built – <https://www.mainroads.wa.gov.au/tonkin-gap#whats-happening>.



Night works

From mid-August we will be working at night on Broun Avenue to realign the road so we can start temporary pavement construction north of Broun Avenue bridge. At this stage, the same number of lanes on Broun Avenue will remain.

Pedestrian Shared Path (PSP) detour

The temporary footpath on Babington Crescent is now complete and the final PSP detour is in place. This is so we can start earthworks south of Broun Avenue. To see the detour visit <https://www.mainroads.wa.gov.au/tonkin-gap/#roadworks>

What can I expect?

- Works and vehicle movements may be noticeable across all areas.
- Noise and vibration management measures are in place, including use of the quietest equipment reasonably available.
- High noise level equipment will be located away from residential areas, and noisiest activities scheduled to take place earlier in the night.
- Works will be in accordance with a noise management plan approved by your local government authority.
- If you have concerns about our works, please call 138 138 (24 hours).

For more information on Tonkin Gap

W: <https://www.mainroads.wa.gov.au/tonkin-gap/>
E: enquiries@mainroads.wa.gov.au
T: 138 138 (24 hours)
FB: <https://www.facebook.com/groups/tonkingap/>

For more information on the Morley-Ellenbrook Line

W: www.metronet.wa.gov.au
E: info@metronet.wa.gov.au
T: 08 9326 3666
FB: <https://www.facebook.com/groups/morley.ellenbrook>