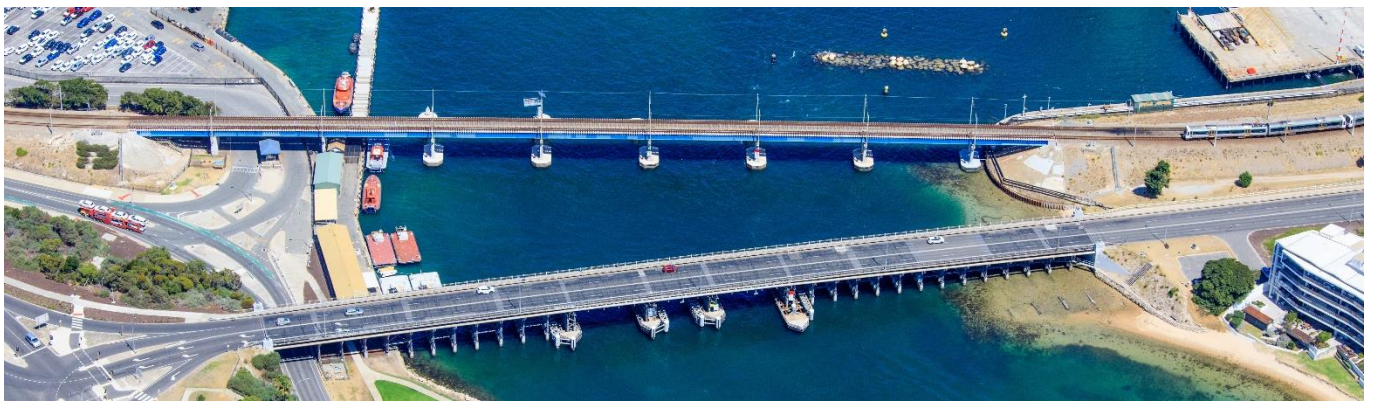


# Swan River Crossings Project

## Community and Stakeholder Engagement Outcomes – Proposed Alignment Options



In May and June 2021, a comprehensive three-week program of broad community consultation on four proposed bridge alignment options for the Swan River Crossings Project was completed.

The consultation included an online Swan River Crossings Alignment Options Assessment Survey. Respondents were asked to provide their sentiment towards each of the four bridge alignment options and associated potential traffic impacts during construction. Respondents also provided feedback on how often they use the bridge and how they wanted to be consulted in the future.

Forums, workshops, pop-up information stands, emails and dozens of face-to-face briefings were delivered to create awareness of the project and encourage feedback via the survey. A broad range of community members and stakeholders, local to the bridge project area and beyond participated throughout the three weeks.

A key feature of the consultation was the online visualisation tool that showcased the alignment options and amassed almost 6,000 unique users. The tool allowed each alignment option to be viewed from multiple viewpoints and included additional project information. Users could click directly from the tool to the survey.

Almost 1,000 people took the next step and completed the online survey. About two-thirds of the survey responses were from City of Fremantle or Town of East Fremantle residents and almost 120 survey responses from local business owners.

### Key stakeholder engagements

The public consultation period was delivered concurrently with focussed stakeholder engagements, consisting of workshops and briefings in late April 2021. A third Swan River Crossings Community Forum launched the public program on 11 May 2021 and brought together highly interested stakeholders and local community representatives who participated in the two previous sessions with Main Roads in 2020.

A program of business engagement also secured a formal position from the Fremantle Chamber of Commerce and Industry, the City of Fremantle, and the Town of East Fremantle.



Figure 1: Summary of community engagement activities

## Consultation program outcomes

The outcomes of the program resulted in a clear preference for the proposed alignment of **Option One**. This option places the new traffic bridge and the new rail bridge with two tracks of rail, between the existing Fremantle Traffic Bridge and the existing rail bridge. This option allows for the potential retention of a portion of the existing traffic bridge for heritage recognition purposes.

A detailed analysis of qualitative feedback showed most people preferred **Option One** for the following reasons:

- The reduction of localised impacts as the alignment is farthest from North Fremantle properties
- The opportunities created for space activation on the south bank
- The reduction in the overall footprint of transport infrastructure, bringing the road bridge closer to the rail bridge.

There was no clear second preference to Option One.

- **Option Two**, which has the same road alignment as Option One but only one rail track instead of two, was not supported as majority of respondents' value future-proofing the passenger rail.
- **Option Three**, the alignment released by Main Roads in 2020, was not supported as many respondents commented on the proposal being too close to North Fremantle apartments and suggested it would result in areas of "dead space" on the southern bank.
- **Option Four** was also not supported due to the proposed traffic impacts during construction, which would involve the full closure of the existing traffic bridge, as well as concerns about the heritage impacts from the full demolition of the existing road bridge.

The Swan River Crossings Project will replace the Fremantle Traffic Bridge (Queen Victoria Street) and upgrade rail infrastructure for passengers and freight. It is being designed to deliver improved road, rail, cycling and walking routes across the Swan River at Fremantle - while also increasing safety and navigational clearances for boats.

## Further information

For further information and to subscribe for project updates, please visit [www.mainroads.wa.gov.au](http://www.mainroads.wa.gov.au) and search 'Swan River Crossings' or contact 138 138.