

# Mitchell Freeway Extension - Hester Avenue to Romeo Road



Jointly funded by the Federal (\$107.5 million) and State (\$107.5 million) Governments, the \$215 million Mitchell Freeway Extension Project will **improve safety** and **reduce congestion** on the northern freeway network.

## About the Project

We are planning a 5.6 kilometre northern extension of the Mitchell Freeway from Hester Avenue to Romeo Road in Alkimos and a bridge over the freeway at Lukin Drive. The freeway extension Project will service the fast growing outer northern suburbs of Yanchep, Butler, Alkimos, Eglinton and Nowergup. It will also extend the freeway to Romeo Road and provide new freeway access points at Lukin Drive and Romeo Road.

This extension is part of a suite of transport infrastructure improvements designed to support Perth's rapidly expanding outer northern suburbs.

It will alleviate pressure on the local road network, reduce travel times and improve safety and connectivity for people living and working in the area.

## Key construction features

- 5.6 kilometres of freeway from Hester Avenue, two lanes in each direction
- Northbound on-ramp and southbound off-ramp at Hester Avenue interchange
- Interchange at Lukin Drive (eastern section of the Lukin Drive ends at the interchange)
- Road bridge over Nowergup rail-yard access road
- Rail tunnel/bridge for the rail to exit the freeway median to Butler, approximately 500m north of Lukin Drive
- Northbound off-ramp and southbound on-ramp at Romeo Road where freeway terminates
- Upgrade from 3-way to 4-way signalised intersection at Romeo Road and Marmion Avenue.
- Dual carriageway on Romeo Road from Wanneroo Road to Marmion Avenue



- Duplicate Wanneroo Road for approximately 1.5 km north of Romeo Road and approximately 300m south of Romeo Road, including the intersection upgrade at Romeo Road / Wanneroo Road / Karoborup Road
- Principal shared path (PSP) on the west side of the freeway connecting to the existing freeway PSP north of Hester Avenue
- Noise walls
- Services relocations (water, gas, power, communications, sewerage etc)
- Lighting to the Mitchell Freeway, Wanneroo Road, Romeo Road, side-street and PSP
- Safety barriers to separate the railway and freeway corridors

### Optional works

Three areas of optional works have been identified as part of the Project. These include:

1. The duplication of Wanneroo Road south to Dunstan Road with a pedestrian/fauna underpass and an interchange at Nowergup Road;
2. A freeway interchange for Butler Boulevard; and
3. Widening works for Lukin Drive west to Connolly Drive (see map for details).

These options will be decided upon following the assessment and engagement of a design and construction contractor and will be advised in the coming months.

### Request for proposal sought from industry

Late last year, we called for expressions of interest from industry for the design and construction of the Mitchell Freeway Extension. The applications were assessed and shortlisted proponents were invited to submit a request for proposal. The preferred proponent to deliver the design and construction will be announced in the coming months.

### Timing

The Project has been fast-tracked as part of a State Government major infrastructure initiative to boost the economy post COVID-19. A preferred proponent to deliver the design and construction will be announced in the coming months with vegetation clearing commencing late this year and construction commencing early next year. The Project is scheduled for completion late 2022.

### Construction Reference Group meeting

The recently appointed Construction Reference Group (CRG) met for the first time in June. The CRG were presented with an overview of the Project and the role of the group, and discussed community opportunities and issues associated with Project. The CRG has been formed to:

- Collaboratively inform the planning and development process for the Project
- Assist with identifying and responding to Project issues and opportunities identified by Project stakeholders
- Provide a channel for two-way communication and stakeholder input
- For more information on the CRG or to view the minutes of the meeting, please visit [www.mainroads.wa.gov.au](http://www.mainroads.wa.gov.au).



Image taken during Flora and Fauna survey

### Noise walls

Noise monitoring and modelling has been undertaken and will determine the final design and location of noise walls adjacent to existing residential areas in line with State Planning Policy 5.4.

Main Roads will provide a noise wall along the western side of the freeway for its full length from Hester Avenue to Romeo Road. More information about wall heights and materials will be made available once the design has been finalised.

### Environmental and heritage

All reasonable precautions will be taken during the works to protect significant flora, vegetation and fauna in the area.

Detailed flora, vegetation and fauna surveys have been undertaken to understand the potential impact of the freeway extension on the environment. The surveys have informed the planning and design to include a dual-use pedestrian/fauna underpass for the Yaberoo Budjara Heritage Trail at Romeo Road, and an optional dual-use pedestrian/fauna underpass on Wanneroo Road connecting Neerabup National Park and Neerabup Nature Reserve (see map for details).

During the clearing works, removal of vegetation will be undertaken in a progressive manner to allow fauna



Image taken during Flora and Fauna survey

to relocate to the adjacent National Park. Fauna present on site that do not voluntarily move back into adjacent habitat will be relocated by a qualified fauna handler.

Aboriginal and European heritage surveys were completed in 2019 and 2018 respectively and no sites of significance were identified within the planned extension footprint. Should any items of potential interest be located during the works, the relevant authorities will be contacted to protect and preserve the articles.

### Electric Vehicle trial

Main Roads is supporting the shift to Electronic Vehicles (EV) for use on the state road network and have nominated the Mitchell Freeway Extension Project to take part in a pilot trial. The trial aims to test the commercial approach and understand any unforeseen issues that could arise through the introduction of a policy to implement a similar style quota for other Projects. If successful, a quota will be incorporated into further major Projects to support a wider Western Australian EV Strategy currently under development.

### Further information and contact details

If you would like further information, have any questions or concerns, you can contact us in several ways:

Email: [enquiries@mainroads.wa.gov.au](mailto:enquiries@mainroads.wa.gov.au)

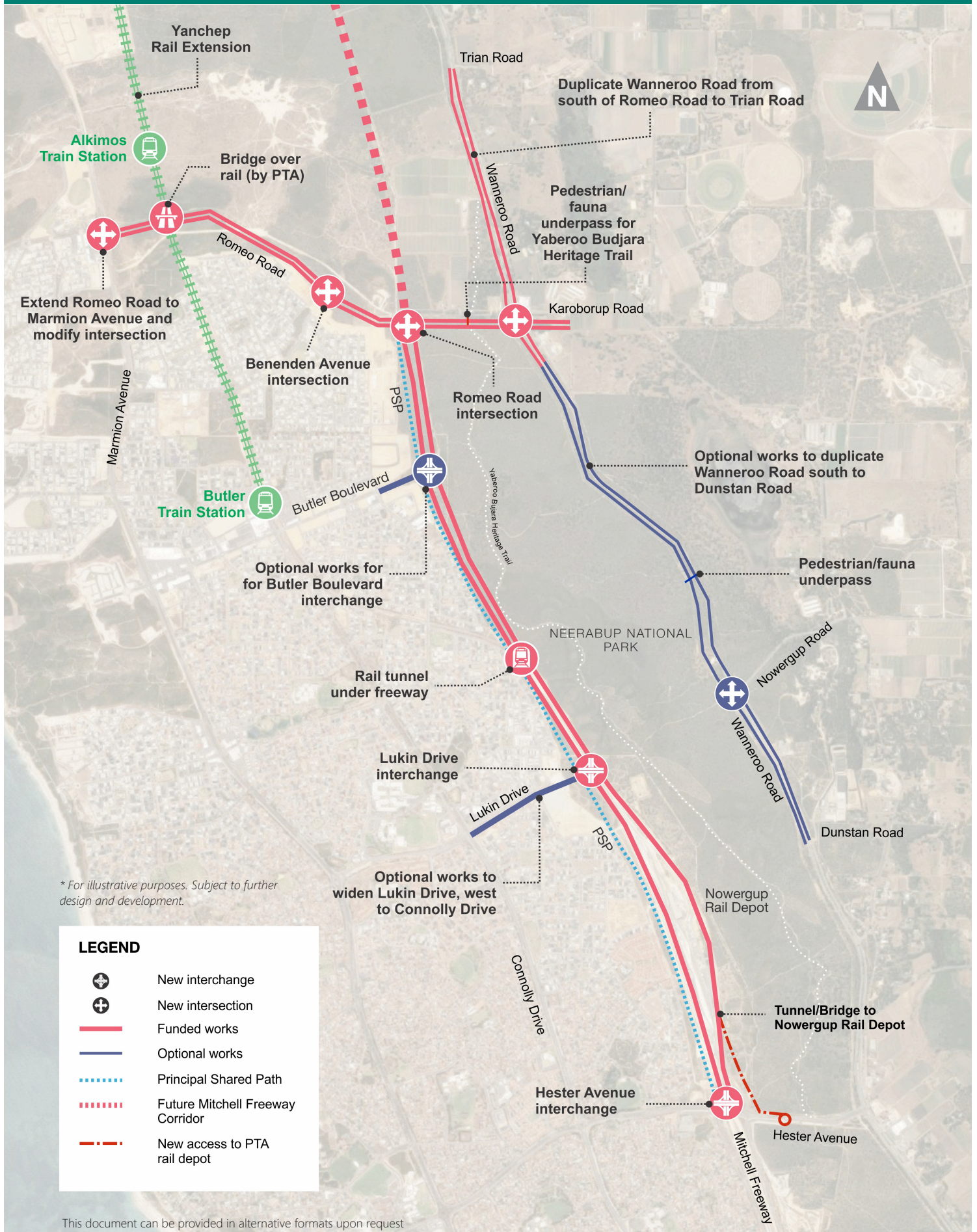
Telephone: Main Roads on 138 138

Webpage: Visit our Project page and subscribe to stay updated [www.mainroads.wa.gov.au](http://www.mainroads.wa.gov.au)

Construction of the Mitchell Freeway Extension Project will be aligned and coordinated with the **Yanchep Rail Extension**, part of the Australian and State Governments' commitments to METRONET.



# MITCHELL FREEWAY EXTENSION - Hester Avenue to Romeo Road



This document can be provided in alternative formats upon request