

10 July 2024

HELENA STREET LEVEL CROSSING - NOW CLOSED PERMANENTLY

Dear Resident / Business owner,

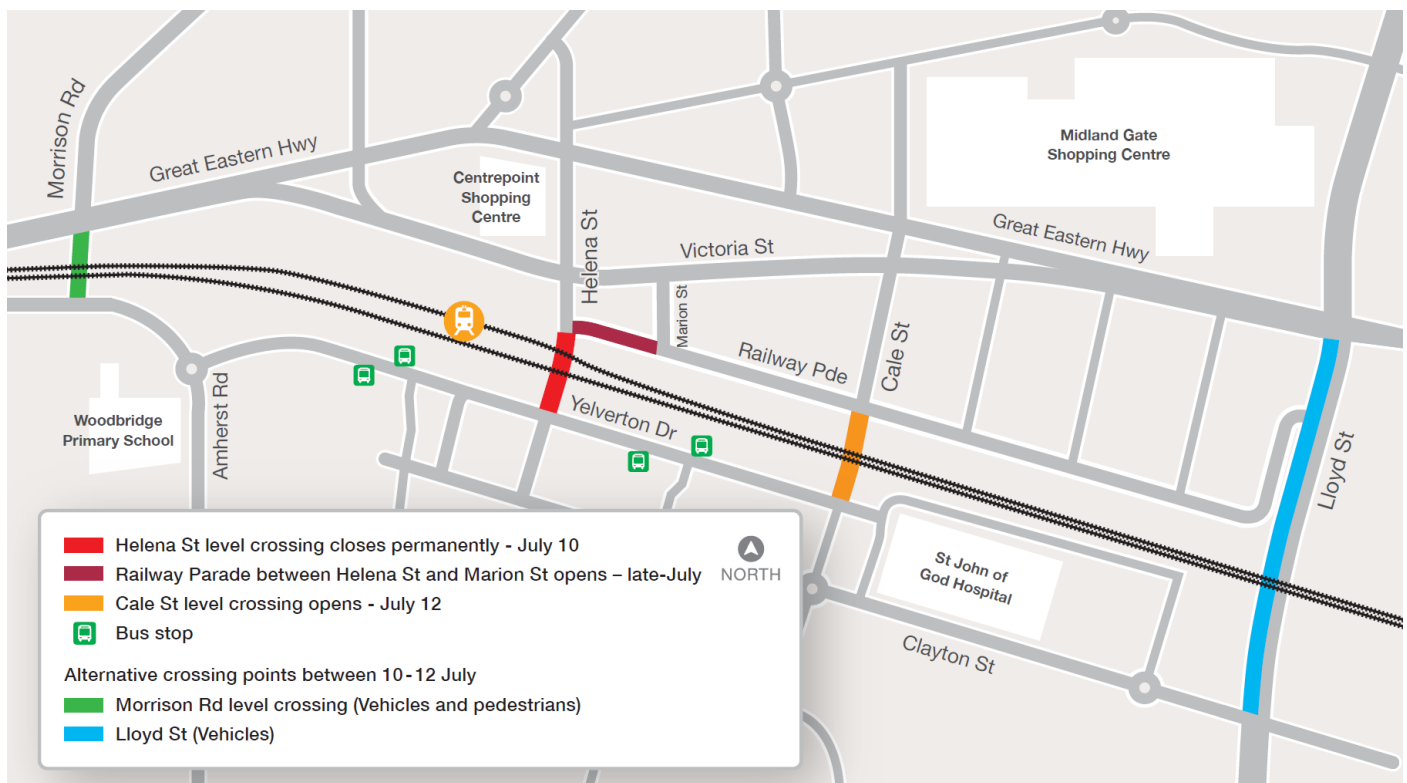
The Helena Street level crossing is now closed. Please see below some important dates and information:

- **The Cale Street level crossing will open on Friday 12 July at 7.00pm**

Safety commissioning testing of the signalling system will take place for approximately 48-60 hours.

During this time the Morrison Road level crossing or Lloyd Street are suggested alternative crossing points for vehicles. An alternative pedestrian crossing is available at the Morrison Road level crossing (see map below).

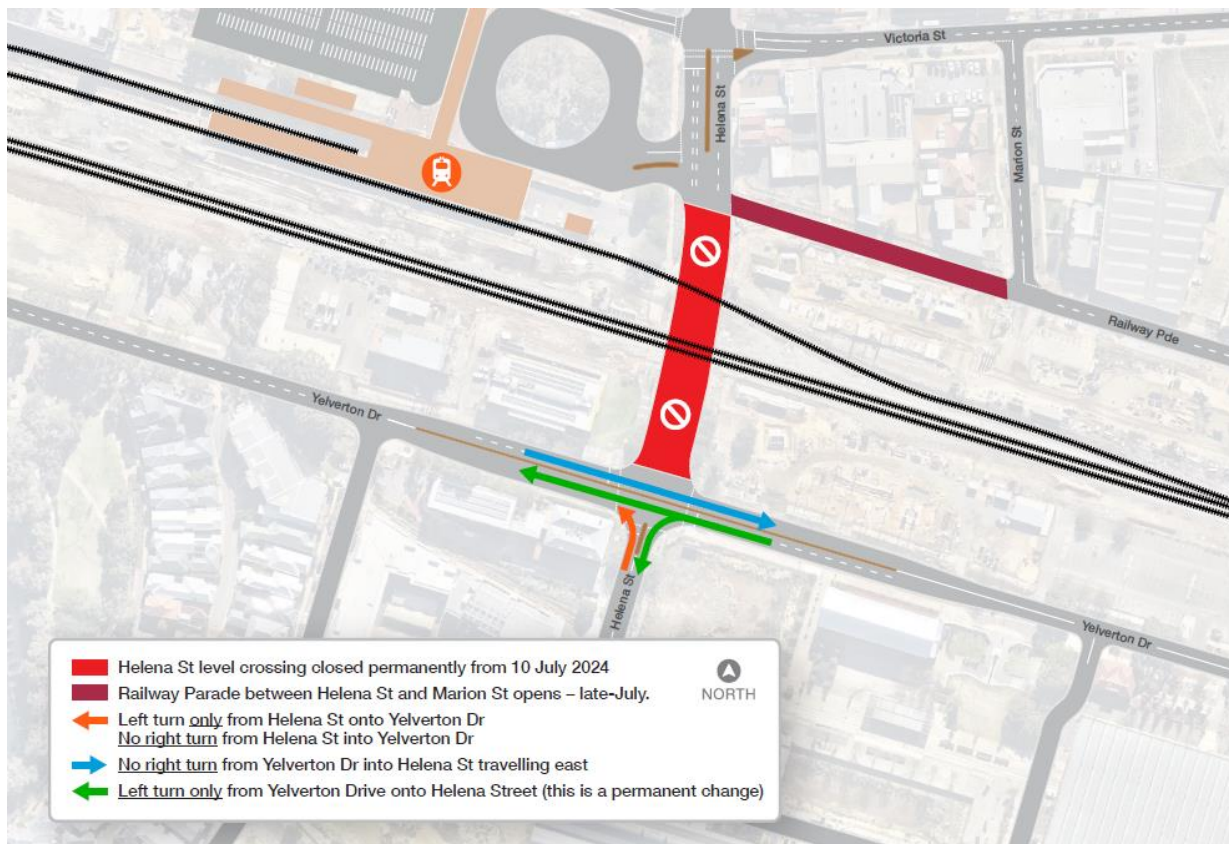
Bus Route 301, which runs from Midland Station to St John of God Midland, will now include four stops along Yelverton Drive to improve north/south access (see map below). The Route will operate via the Morrison Rd level crossing until the road network around Midland Station allows it to run via the Cale Street level crossing. More information is available on the Transperth website: www.transperth.wa.gov.au.



Changes to Yelverton Drive/Helena Street intersection

As a result of the Helena Street level crossing closure, there are some temporary changes to the traffic flow on Yelverton Drive. These changes are expected to be in place until early next year:

- **Left turn only** from Helena Street onto Yelverton Drive.
- **No right turn** will be permitted from Helena Street onto Yelverton Drive.
- **No right turn** from Yelverton Drive onto Helena Street when travelling from the west.
- **Left turn only** from Yelverton Drive onto Helena Street (this change is permanent)



Changes to Cale Street/Great Eastern Highway intersection

From Friday 12 July, temporary changes will be implemented at the Cale Street/Great Eastern Highway intersection (adjacent to San Churro) to enhance safety and traffic flow for the community. These changes are being implemented in conjunction with the opening of the new level crossing at Cale Street.

Key changes include:

- **Left turn only** from Cale Street onto Great Eastern Highway. Southbound access onto Cale Street will be restricted.
- The speed limit along Great Eastern Highway will temporarily reduce to 50km/h between Padbury Terrace and Keane Street.
- Removal of some parking bays along Great Eastern Highway to improve visibility for northbound traffic.

