



mainroads
WESTERN AUSTRALIA

*We're working for
Western Australia.*

Restricted Access Vehicle: Agricultural Machine

Operating Conditions

Printed copies are uncontrolled unless marked otherwise.
Refer to Main Roads website for the current version.

D18#793921
September 2021

Contents

REFERENCES AND RELATED DOCUMENTS	5
DEFINITIONS	5
1 APPLICATION	7
2 COMPLYING WITH LICENSING CONDITIONS.....	7
3 COMPULSORY HEAVY VEHICLE INCIDENT REPORTING	7
4 ORDER STATUS	7
4.1 Order Suspension & Revocation	7
4.2 Order Amendments & Notifications	7
5 AXLE SPACING REQUIREMENTS	8
6 MASS REQUIREMENTS.....	8
6.1 Mass Limits – Wheeled Agricultural Machines	8
6.2 Track Widths.....	9
6.3 Mass Limits – Dual & Quad Tracked Agricultural Machines	9
6.4 Mass Limits – Half Tracked Agricultural Machines	9
7 DIMENSION REQUIREMENTS.....	9
8 ACCESS CONDITIONS	10
8.1 Route Survey.....	10
8.2 Approved Roads	10
8.3 Restricted Bridges	10
8.1 Other Agency Height Approvals.....	10
9 SPEED & SAFE TRAVEL CONDITIONS	10
9.1 Speed Restrictions.....	10
9.2 Passing & Overtaking	11
9.3 Minimum Following Distance	11
9.4 Poor Visibility	12
10 TOWING & LOADING RESTRICTIONS.....	12
11 WARNING DEVICES.....	12
11.1 Lights.....	12
11.2 Warning Signs & Flags	12
11.3 Other Markings	13
11.4 Additional Lighting Requirements at Night	13
12 PILOT REQUIREMENTS.....	13
12.1 General Pilot Requirements	13
12.2 Pilot Vehicle Warning Lights and Signs.....	13
12.3 Managing Traffic.....	14
12.4 Position of Pilot Vehicles.....	14
12.5 Number of Pilot Vehicles.....	15
12.6 Convoy Travel with Pilot Vehicles	15
13 CURFEWS	15
13.1 Night Curfews	15

13.2 Christmas & New Year Curfews.....	15
13.3 Easter Curfews	16
13.4 Long Weekend Curfews.....	16
APPENDICES	16
Appendix 1: Metropolitan Area.....	17
Appendix 2: Agricultural Pilot Requirements	18
Appendix 3: Mandurah Curfew Map.....	19

Document Control

Owner	Main Roads Heavy Vehicle Services
Custodian	Manager Heavy Vehicle Road Network Access
Document Number	D18#793921
Issue Date	22 September 2021
Review Frequency	As Required

Amendments

Revision Number	Revision Date	Description of Key Changes	Section
1	20 August 2019	Amended section 8 to align with revised pilot Agricultural Pilot requirements and added Appendix 2 & 3.	8
2	22 August 2019	Removed sub-clause 8.1.3 and Appendix 3.	8
3	16 September 2019	Added reference for Traffic Management requirements.	Appendix 2
4	5 November 2019	Amended curfews in Section 9, amended Section 8 to allow Agricultural Pilot to tow & general formatting.	9 8 All
5	14 January 2020	Added definition for licensed pilot	Definitions
6	3 August 2020	Changed name from RAV Network 2 to Tandem Drive Network 2	Definitions
7	8 September 2020	Updated Compulsory Heavy Vehicle Incident Reporting.	3
8	22 September 2021	Formatted document, incorporated tracked vehicle requirements, removed Shire of Augusta Margaret River, Nannup and Manjimup from restricted areas, amended allowable delineation methods, added passing and overtaking requirements, updated general pilot requirements, added requirements for positioning pilot vehicles and managing traffic and updated Perth metropolitan area map.	5, 8, 11.3, 9.2, 12 Appendix 1

REFERENCES AND RELATED DOCUMENTS

The following documents relate to these Operating Conditions and are available on the Agricultural Vehicles page on the Main Roads website:

Document Number	Description
D20#609230	Agricultural Machine Restricted Bridges
D15#453366	Oversize Vehicle & Pilot Vehicle General Requirements
D18#793921	Agricultural Pilot Operational Requirements
D13#317598	Contact Details for Other Agency Approvals
D07#103477	Traffic Management Requirements - Towed Agricultural Implements Crossings

DEFINITIONS

The following are definitions for terms used in these Operating Conditions. Refer to the definitions in the *Road Traffic (Administration) Act 2008* and the *Road Traffic (Vehicles) Act 2012* and any subsidiary legislation to these Acts for the meanings of any terms not defined in this section. If a definition in the relevant Acts or the subsidiary legislation conflicts with a definition in this section, the definition in this section prevails for the purpose of these Operating Conditions.

Term	Definition
Agricultural Pilot	A person authorised to accompany an Agricultural Combination under the <i>Heavy Vehicle Agricultural Pilot Authorisation</i> , who is not required to hold any formal qualifications or a heavy vehicle pilot licence.
Agricultural Machine	A machine with its own motive power, built to perform agricultural tasks.
Axle Spacing	(a) the distance from the centre of any single axle to the centre of any other single axle; (b) the distance from the centre of any single axle to the centre of the furthest axle in any axle group; or (c) the greatest distance between the centres of axles in any axle groups.
Curfew	A period when the movement of an agricultural machine is not permitted
Day hours	The hours between sunrise and sunset. Sunrise and sunset times can be obtained from the Perth Observatory website at www.perthobservatory.com.au/ or by contacting the Perth Observatory on 08 9293 8255, or from the Geoscience Australia website at http://www.ga.gov.au/geodesy/astro/sunrise.jsp
Friday Long Weekend	A weekend extended to three days where the preceding Friday is the granted Public Holiday.
Front Projection	The distance measured from the front of the lens of the vehicle's headlights to the forward most part of the vehicle.

Licensed Pilot	A qualified heavy vehicle pilot who is a holder of a heavy vehicle pilot licence issued under Part 13A of the <i>Road Traffic (Vehicles) Regulations 2014</i> .
Main Roads website	www.mainroads.wa.gov.au
Monday Long Weekend	A weekend extended to three days where the following Monday is the granted Public Holiday.
Mandurah Curfew Map	The area within Appendix 3 .
Night	The hours between sunset and sunrise. Sunset and sunrise times can be obtained from the Perth Observatory website at www.perthobservatory.com.au/ or by contacting the Perth Observatory on 08 9293 8255, or from the Geoscience Australia website at http://www.ga.gov.au/geodesy/astro/sunrise.jsp
Operator	The entity responsible for the operation of the RAV.
Order	An Order issued under the Road Traffic (Vehicles) Act 2012.
Perth Metropolitan Area	As depicted in Appendix 1 , means the area within: <ul style="list-style-type: none"> • the northern boundaries of the Local Government districts of Wanneroo, Swan and Mundaring; • the eastern boundaries of the Local Government districts of Wanneroo, Swan, Mundaring, Kalamunda, Armadale and Serpentine-Jarrahdale; • the southern boundaries of the Local Government districts of Serpentine-Jarrahdale and Rockingham; and the Indian Ocean coastline.
Posted Speed Limit	The speed limit indicated on the speed limit sign or in the absence of a speed limit sign in a built-up area, 50 kilometres per hour.
Projection	The distance an object extended beyond the normal confines or body of the vehicle to the front, side or rear.
RAV	Restricted Access Vehicle (RAV) and includes an agricultural machine.
Tandem Drive Network 2	The Tandem Drive Network 2 approved roads are published in the form of Road Tables or are available on the RAV Mapping Tool on the Main Roads website.
Special Permit	A Temporary Permit Exceeding 48 hours (for licencing purposes) for over-mass and over-dimensional vehicles, available from the Department of Transport.
Vehicle Regulations	The <i>Road Traffic (Vehicles) Regulations 2014</i> .

1 APPLICATION

The *Agricultural Machine Order 2018* applies to an agricultural machine that complies with the following requirements:

- (a) has only one single axle to the front and one single axle to the rear of the vehicle; and
- (b) complies with the axle spacing requirements as per Section 5 of these Operating Conditions; and
- (c) is licensed, or is covered by a valid special permit, or is being moved by a dealer using Trade Plates.

2 COMPLYING WITH LICENSING CONDITIONS

Drivers and operators are reminded that in addition to these Operating Conditions, the agricultural machine must be driven in accordance with any conditions of the vehicle's licence, as imposed by the relevant *Licensing Authority*.

3 COMPULSORY HEAVY VEHICLE INCIDENT REPORTING

All on-road incidents involving an agricultural machine must be reported to Main Roads Heavy Vehicle Services by the operator. The Heavy Vehicle Incident Reporting form is available on the Incident Reporting page on the Main Roads website and it must be submitted within 48 hours of the incident occurring.

4 ORDER STATUS

4.1 Order Suspension & Revocation

- 4.1.1 Approval to operate an agricultural machine may be suspended when road and/or traffic conditions are considered unsuitable. Main Roads personnel, WA Police or Traffic Escort Wardens, may make verbal notification of such suspension.
- 4.1.2 Approval to operate an agricultural machine may be suspended or revoked if the operator or vehicle combination fails to comply with any of the requirements specified in these Operating Conditions.

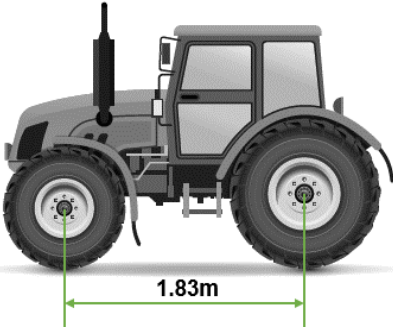
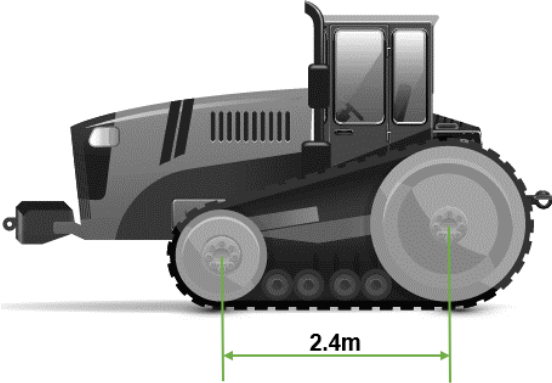
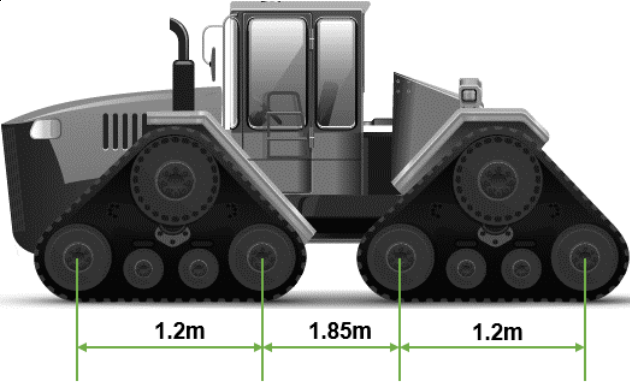
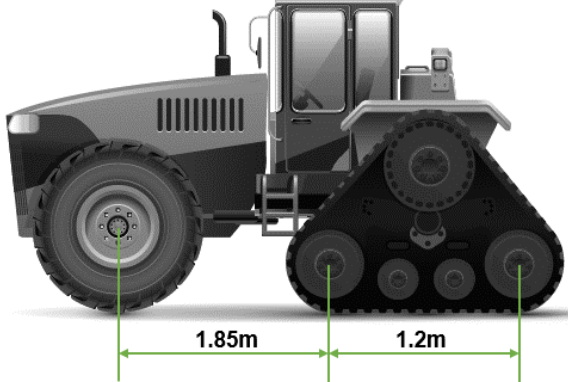
4.2 Order Amendments & Notifications

- 4.2.1 These Operating Conditions are subject to occasional amendment. If amendments are made that impact operators, they will be published as an "HVS update" on the Main Roads website on the first working day of the month. Operators and drivers are required to ensure that they are operating vehicles on the public road network in accordance with the current *Agricultural Machine Operating Conditions*.
- 4.2.2 The document *Agricultural Machine Restricted Structures* is subject to periodic amendments, which include additional bridges being added to, or bridges being removed from the list of restricted bridges. Any amendments to the *Agricultural Machine Restricted Structures* document are made and published before close of business on Wednesday and take effect from midnight. Operators and drivers are required to ensure they are operating vehicles on the public road network in accordance with the most current and up to date *Agricultural Machine Restricted Structures* document.
- 4.2.3 Heavy Vehicle Travel Impacts are published when road conditions may impede the movement of Restricted Access Vehicles. Operators and drivers are required to check the Heavy Vehicle Travel Impacts on the Main Roads website immediately prior to operating the vehicle on the public road network to ensure that there is no relevant information that will impede their vehicle operating on the WA road network.

4.2.4 All conditions stipulated in HVS Updates or Heavy Vehicle Travel Impacts must be adhered to. Where a condition stipulates that contact must be made with a site supervisor or any other person prior to travel, this must be done via email or text message and evidence provided to Main Roads’ personnel upon request.

5 AXLE SPACING REQUIREMENTS

The distance between adjacent axles of an agricultural machine must meet the minimum spacings as depicted below:

Wheeled Machine	Dual Tracked Machine
	
Quad Tracked Machine	Half Tracked Machine
	

6 MASS REQUIREMENTS

6.1 Mass Limits – Wheeled Agricultural Machines

A wheeled agricultural machine must not exceed a mass limit specified for an axle in the table below:

Width of narrowest tyre on axle (mm)		Mass limit (t)	
at least	less than	axle with 2 tyres	axle with 4 tyres
190	228	4.5	9.0
228	254	5.0	9.5
254	279	6.0	10.0
279	305	6.5	11.0
305	330	7.0	12.0
330	356	7.5	13.0

356	381	8.0	14.0
381	406	9.0	14.0
406	458	10.0	14.0
458	508	11.0	14.0
508	-	12.0	14.0

6.2 Track Widths

The rubber tracks on a tracked agricultural machine must have a width of at least 406 millimetres.

6.3 Mass Limits – Dual & Quad Tracked Agricultural Machines

The tracks on dual or quad tracked agricultural machine must not exceed the mass limits specified in the following table:

Dual Tracked Machine	14.0 tonnes per track
Quad Tracked Machine	7.0 tonnes per track

6.4 Mass Limits – Half Tracked Agricultural Machines

6.4.1 The tracks on half tracked agricultural machine must not exceed the mass limit specified in the following table:

Half Tracked Machine	7.0 tonnes per track
-----------------------------	----------------------

6.4.2 An axle fitted with tyres on a half tracked agricultural machine must not exceed a mass limit specified in the following table:

Width of narrowest tyre on axle (mm)		Mass limit (t)	
at least	less than	axle with 2 tyres	axle with 4 tyres
190	228	4.5	9.0
228	254	5.0	9.5
254	279	6.0	10.0
279	305	6.5	11.0
305	330	7.0	12.0
330	356	7.5	13.0
356	381	8.0	14.0
381	-	9.0	14.0

7 DIMENSION REQUIREMENTS

7.1.1 An agricultural machine must not exceed 6.0 metres in height.

7.1.2 An agricultural machine must not exceed 12.5 metres in length.

7.1.3 An agricultural machine must not exceed 8.5 metres in width.

7.1.4 An agricultural machine must not exceed 4.5 metres rear overhang.

7.1.5 Despite sub-clause 7.1.4, an agricultural machine that is an auger or conveyor may have a rear overhang not exceeding 5.5 metres.

7.1.6 An agricultural machine must be reduced to the smallest possible dimension, i.e. any boom or other equipment fully retracted.

Note: *For the purpose of this Clause, any flags, lights or mirrors on the agricultural machine shall be disregarded when measuring the dimensions.*

8 ACCESS CONDITIONS

8.1 Route Survey

8.1.1 Prior to departure, the operator or driver of the agricultural machine must assess the route of travel to ensure that it is suitable for use and that it can be driven along without contravening these Operating Conditions.

8.1.2 An agricultural machine must not be driven along a road if it is likely to cause:

- (a) Damage to a property or another vehicle;
- (b) Damage to telecommunication, electrical, rail, gas, water or sewage services; or
- (c) Damage to a road (including a bridge), structure, roadside furniture, rail crossing or tree.

8.2 Approved Roads

An agricultural machine may travel on any road within the State of Western Australia, except on a road within the Perth metropolitan area.

8.3 Restricted Bridges

An agricultural machine must not be driven on a bridge listed in the *Agricultural Machines Restricted Structures*, available and maintained on the Agricultural Vehicles page and RAV Mapping Tool on the Main Roads website.

Note: *It is an offence under the Road Traffic Code 2000 for a vehicle to cross a bridge if the vehicle has a mass limit in excess of the posted mass limit for the bridge.*

8.1 Other Agency Height Approvals

8.1.1 An agricultural machine exceeding 4.3 metres in height must not be driven on a road without current written approval from all of the relevant overhead cable operators.

8.1.2 Despite sub-clause 8.1.1, an agricultural machine up to 4.6 metres in height may travel on any road listed in *Tandem Drive Network 2*, without approval from the relevant cable operator, except where a height restriction is specified as a road condition in *Tandem Drive Network 2*.

8.1.3 Any written approval obtained in accordance with this Clause must be carried and produced to a member of the WA Police or Main Roads.

Note: *Contact Details for Other Agency Approvals are available on Oversize Overmass (OSOM) page of the Main Roads website.*

9 SPEED & SAFE TRAVEL CONDITIONS

9.1 Speed Restrictions

9.1.1 An agricultural machine exceeding 3.5 metres in width must not be driven at a speed that exceeds the lesser of:

- (a) The maximum vehicle speed defined as part of the vehicle's licencing conditions; or
- (b) 80 km/h; or
- (c) The posted speed limit.

- 9.1.2** A agricultural combination exceeding 2.5 metres in width travelling at night must not be driven at a speed that exceeds the lesser of:
- (a) The maximum vehicle speed defined as part of the vehicle's licencing conditions; or
 - (b) 80 km/h; or
 - (c) The posted speed limit.

Note: *The above are the maximum allowable speeds. Agricultural machines must be driven at a safe speed, taking into consideration the road conditions and the machine's performance capabilities.*

- 9.1.3** An agricultural machine approaching a railway crossing must be driven at a speed at which the driver can, if necessary, stop safely before the crossing.
- 9.1.4** An agricultural machine approaching any fixed obstacle, including roadside furniture, traffic signals, guardrails etc. must be driven at a speed at which the driver can safely negotiate the obstacle and if necessary, stop safely.
- 9.1.5** An agricultural machine approaching another vehicle in the opposing direction must be driven at a speed at which the driver can, if necessary, move over or stop safely before passing.

9.2 Passing & Overtaking

- 9.2.1** The driver of an agricultural machine or lead pilot must monitor the UHF channel 40 for oncoming RAVs. Where it is identified that the agricultural machine and a RAV will need to pass in opposing directions and the road width is not adequate, the agricultural machine or RAV that is passing a suitable parking bay must stop in the parking bay to facilitate the vehicles passing each other. All involved parties must communicate with one another to determine who will stop in a parking bay, or if no parking bay is available, move off the road at a suitable location.
- 9.2.2** Where the road width is not sufficient to allow an oncoming vehicle to pass the agricultural machine and for both vehicles to remain on the sealed section of road, the agricultural machine driver must determine which vehicle is a higher risk. Higher risk includes factors, such as heavier axle loadings and higher centre of gravity. The higher risk vehicle must remain on the sealed section of road, where practicable.
- 9.2.3** To avoid unreasonable traffic build up and allow vehicles to pass safely, an agricultural machine in excess of 4.5 metres in width must stop in all suitable parking bays to allow built up traffic to pass.

Note: *Unreasonable traffic build up can include multiple vehicles, as well as a single vehicle that has been held-up behind the agricultural machine for more than 10 minutes, due to a lack of overtaking opportunities. Nothing in this clause prevents an agricultural machine from stopping or slowing down in other suitable and safe areas to allow vehicles to pass safely*

9.3 Minimum Following Distance

The driver of an agricultural machine must maintain a distance of at least 200 metres from any other heavy vehicle travelling in front of it, unless:

- (a) Agricultural machines are travelling in convoy in accordance with these operating conditions; or
- (b) The agricultural machine is overtaking the vehicle in front or the vehicle in front is stopping; or
- (c) There is a separate lane available for the use of overtaking traffic; or

- (d) The agricultural machine is in an urban area and it is not reasonably practicable to maintain such a distance; or
- (e) The agricultural machine is stopped, or coming to a stop for the purpose of complying with a provision of any law or avoiding conflict with other traffic

9.4 Poor Visibility

- 9.4.1** The driver of an agricultural machine must not begin to travel if, due to circumstances such as fog, heavy rain, smoke, dust or insect plague:
- (a) The visibility is less than 250 metres during the day; or
 - (b) The headlights of a vehicle approaching within 250 metres cannot be seen at night.
- 9.4.2** Where an agricultural machine is already travelling when visibility is reduced to the level described above, the driver must drive into the nearest safe parking area, and wait until visibility improves beyond that level before continuing to travel.

10 TOWING & LOADING RESTRICTIONS

- 10.1.1** An agricultural machine must not tow a trailer or any other vehicle, unless approved under a Main Roads permit or operating under the *Agricultural Combinations Order*.
- 10.1.2** An agricultural machine that exceeds a statutory mass limit must not carry a load, unless:
- (a) The load is equipment and/or substances necessary for the operation of the vehicle; or
 - (b) The load is necessary to enable the vehicle to perform its agricultural function.

11 WARNING DEVICES

11.1 Lights

- 11.1.1** An agricultural machine must operate with headlights switched on at all times, unless the agricultural machine is not required to be fitted with headlights.
- 11.1.2** An agricultural machine in excess of 2.5 metres in width must display at least one amber flashing warning light, which must be visible in all directions, or must be supplemented by additional warning lights so at least one warning light is visible in all directions.
- 11.1.3** A warning light must comply with the requirements set out in the *Oversize Vehicle & Pilot Vehicle General Requirements*.
- 11.1.4** An agricultural machine must not operate an amber warning light if not required under this Clause.

11.2 Warning Signs & Flags

- 11.2.1** An agricultural machine in excess of 2.5 metres in width must clearly display “Oversize” warning signs on the front and rear of the vehicle.
- 11.2.2** An agricultural machine must display a warning flag on the extremity of a front or rear projection greater than 1.2 metres.
- 11.2.3** An “Oversize” warning sign and warning flag must comply with the requirements set out in the *Oversize Vehicle & Pilot Vehicle General Requirements*.
- 11.2.4** An agricultural machine must not display an “Oversize” warning sign if not required under this Clause.

11.3 Other Markings

- 11.3.1** If an agricultural machine has a forward projection exceeding 1.2 metres, the part that is projecting forward of the vehicle's body must display striping made from retro-reflective material, coloured red and white or red and yellow.
- 11.3.2** A side projection on an agricultural machine that extends beyond the body or wheels, whichever is wider, by more than 150mm, must be delineated with one of the allowable delineating methods set out in the *Oversize Vehicle & Pilot Vehicle General Requirements*.
- 11.3.3** Any part of an axle on an agricultural machine that projects more than 150 mm from the outside wall of the tyres must be painted fluorescent yellow or have yellow fluorescent or other high-visibility material wrapped around it.

11.4 Additional Lighting Requirements at Night

An agricultural machine travelling at night must be sufficiently illuminated to ensure it is clearly visible to approaching traffic.

12 PILOT REQUIREMENTS

12.1 General Pilot Requirements

- 12.1.1** The pilot vehicle must comply with the requirements stipulated in the *Agricultural Pilot Operational Requirements*.
- 12.1.2** The driver of a pilot vehicle must hold a Heavy Vehicle Pilot License, unless authorised under the *Heavy Vehicle Agricultural Pilot Authorisation*, available on the Main Roads website.
- 12.1.3** For the purpose of this Clause, the driver of a pilot vehicle operating in accordance with the *Heavy Vehicle Agricultural Pilot Authorisation* is known as an "agricultural pilot".
- 12.1.4** Where an agricultural pilot is specified in [Appendix 2](#), the driver of a pilot vehicle is not required to hold a Heavy Vehicle Pilot License.
- 12.1.5** Where a Licensed Heavy Vehicle Pilot is specified in [Appendix 2](#), it may be substituted for an agricultural pilot, provided there is a holder of a Heavy Vehicle Pilot License in the lead agricultural machine, overseeing the pilots.
- 12.1.6** The headlights or day running lights on a pilot vehicle or escort vehicle must be switched on when accompanying an agricultural machine.
- 12.1.7** A pilot vehicle must not tow a trailer or carry a load, but it may carry tools, equipment or substances for use in connection with the RAV it is accompanying.
- 12.1.8** Despite sub-clause 12.1.7. where an agricultural pilot is specified in [Appendix 2](#), the pilot vehicle may tow one (1) agricultural implement or trailer, provided:
- It is not wider than 2.5 metres; and
 - It does not interfere with the driver's rearward field of vision; and
 - It does not obstruct the pilot vehicle's warning light and sign, unless there is an additional warning light and sign mounted to agricultural implement or trailer.

12.2 Pilot Vehicle Warning Lights and Signs

- 12.2.1** When accompanying an agricultural machine, pilot vehicles must have amber flashing warning lights operating in accordance with the *Agricultural Pilot Operational Requirements*.

- 12.2.2** When accompanying an agricultural machine exceeding 4.5 metres in width, the lead pilot vehicle must have two “alternating flashing white lights”, known as *Wig Wag Lights*, on the front of the pilot vehicle in accordance with the *Agricultural Pilot Operational Requirements*.
- 12.2.3** When accompanying an agricultural machine, pilot vehicles must have “Oversize Load Ahead” warning signs displayed in accordance with the *Agricultural Pilot Operational Requirements*.
- 12.2.4** Pilot vehicles must not have warning lights operating or signs displayed when not accompanying an agricultural machine.

12.3 Managing Traffic

- 12.3.1** The lead pilot or driver of the lead agricultural machine must use UHF Channel 40 at regular intervals to warn oncoming traffic of the approaching oversize agricultural machine.
- 12.3.2** In accordance with Clause 9.2, the lead pilot must monitor the UHF channel 40 for oncoming RAVs or oncoming higher risk vehicles and must facilitate the agricultural vehicle or the other vehicles pulling into parking bays, or other appropriate areas, to enable the oncoming vehicles to pass safely.
- 12.3.3** In accordance with clause 8.2, a rear pilot must monitor the traffic build up at the rear of the agricultural machine and advise the lead pilot when there is traffic build up. The pilots must facilitate the agricultural machine pulling into parking bays or stopping in other safe locations as required to enable vehicles to pass.

Note: *Unreasonable traffic build up can include multiple vehicles, as well as a single vehicle that has been held-up behind the agricultural machine for more than 10 minutes, due to a lack of overtaking opportunities. Nothing in this clause prevents an agricultural machine from stopping or slowing down in other suitable and safe areas to allow vehicles to pass safely.*

12.4 Position of Pilot Vehicles

- 12.4.1** When one (1) pilot vehicle accompanies an agricultural machine, the pilot vehicle must travel:
- (a) Behind the agricultural machine when travelling on a road with multiple lanes in the direction of travel (other than overtaking lanes); or
 - (b) In front of the agricultural machine when travelling on a road with a single lane in the direction of travel.
- 12.4.2** When two (2) pilot vehicles accompany an agricultural machine, the pilot vehicles must travel:
- (a) One (1) in front of the agricultural machine and one (1) behind the agricultural machine; or
 - (b) Where necessary to manage traffic behind the agricultural machine, both may travel behind the agricultural machine when travelling on a road with multiple lanes in the direction of travel (other than overtaking lanes), provided the agricultural machine does not encroach into oncoming traffic.
- 12.4.3** Sub-clauses 12.4.1 and 12.4.2 do not apply when it is necessary for the pilot vehicles to be positioned in a different manner for the purpose of warning traffic at intersections and bridge crossings.
- 12.4.4** A pilot vehicle must travel far enough ahead of the agricultural machine it is accompanying to give adequate warning to other road users of the presence of the agricultural machine, taking into account the type of vehicles that use the road, traffic speed, road geometry, availability of safe pullover areas, weather, visibility and other driving conditions.

12.4.5 A pilot vehicle must not travel on or over continuous dividing lines on a carriageway, unless positioning the vehicle in a safe manner to control an intersection or close a road / bridge.

12.4.6 When crossing continuous dividing lines on a carriageway to control an intersection or close a road / bridge, the pilot must ensure there is sufficient sight distance available for approaching traffic to see the pilot vehicle and stop safely

12.5 Number of Pilot Vehicles

12.5.1 An agricultural machine must be accompanied by the minimum number of pilot vehicles specified in [Appendix 2](#) when travelling outside of the Perth metropolitan area.

12.5.2 The number of pilot vehicles specified in [Appendix 2](#) are the minimum number of pilot vehicles required. If an operator considers it necessary to use additional pilot vehicles to facilitate the safe movement of an oversize agricultural machine, additional pilot vehicles may be used.

12.6 Convoy Travel with Pilot Vehicles

12.6.1 A maximum of three agricultural machines may travel in convoy with one another when accompanied by pilot vehicles.

12.6.2 When agricultural machines are travelling in convoy, the pilot vehicle requirements and any other conditions that are applicable to the largest machine, apply to the convoy.

12.6.3 The distance between agricultural machines travelling in convoy must not exceed 100 metres.

12.6.4 Despite sub-clause 12.6.3, an agricultural machine that is travelling over a bridge must always maintain a distance of at least 200 metres from any other RAV travelling in front of it.

13 CURFEWS

13.1 Night Curfews

An agricultural machine in excess of 3.2 metres is not permitted to travel at *night*, unless:

- (a) Travelling on an Agricultural Pilot Green Zone road; or
- (b) Travelling between Green Zone roads on an Orange Zone road within 1 km; and
- (c) Complying with Clause 11.4 - Additional Lighting Requirements at *night*.

Note: *Agricultural Pilot Zones are available on the RAV Mapping Tool on the Main Roads website.*

13.2 Christmas & New Year Curfews

13.2.1 An agricultural machine exceeding 5.5 metres in width and/or 40 metres in length must not travel on any of the following prohibited roads during the following curfew periods:

Prohibited Roads:

- | | |
|--|-------------------------------|
| (a) All roads in the Perth metropolitan area | (b) Albany Highway |
| (c) Brand Highway | (d) Brookton Highway |
| (e) Bussell Highway | (f) Forrest Highway |
| (g) Indian Ocean Drive | (h) Muir Highway |
| (i) North West Coastal Highway
(Geraldton to Kalbarri Turn-off) | (j) Northampton Kalbarri Road |
| (k) South Coast Highway | (l) South Western Highway |

Curfew Periods:

- (a) From sunrise on the Friday until sunset on the Sunday prior to Christmas Day; and
- (b) From sunrise on 24th December until sunset on 3rd January.

13.2.2 Despite sub-clause 13.2.1, an agricultural machine may travel on the prohibited roads, except roads within the Perth metropolitan area, for a maximum distance of 1.0 kilometre, for the purpose of traveling between non-prohibited roads.

13.3 Easter Curfews

13.3.1 An agricultural machine exceeding 5.5 metres in width and/or 40 metres in length must not travel on any of the following prohibited roads during the following curfew period:

Prohibited Roads:

- | | |
|--|-------------------------------|
| (a) All roads in the Perth metropolitan area | (b) Albany Highway |
| (c) Brand Highway | (d) Brookton Highway |
| (e) Bussell Highway | (f) Forrest Highway |
| (g) Indian Ocean Drive | (h) Muir Highway |
| (i) North West Coastal Highway
(Geraldton to Kalbarri Turn-off) | (j) Northampton Kalbarri Road |
| (k) South Coast Highway | (l) South Western Highway |

Curfew Period:

From sunrise on the Thursday before Good Friday until sunset on the Tuesday after Easter Monday.

13.3.2 Despite sub-clause 13.3.1, an agricultural machine may travel on the prohibited roads, except roads within the Metropolitan Area, for a maximum distance of 1.0 kilometre, for the purpose of traveling between non-prohibited roads.

13.4 Long Weekend Curfews

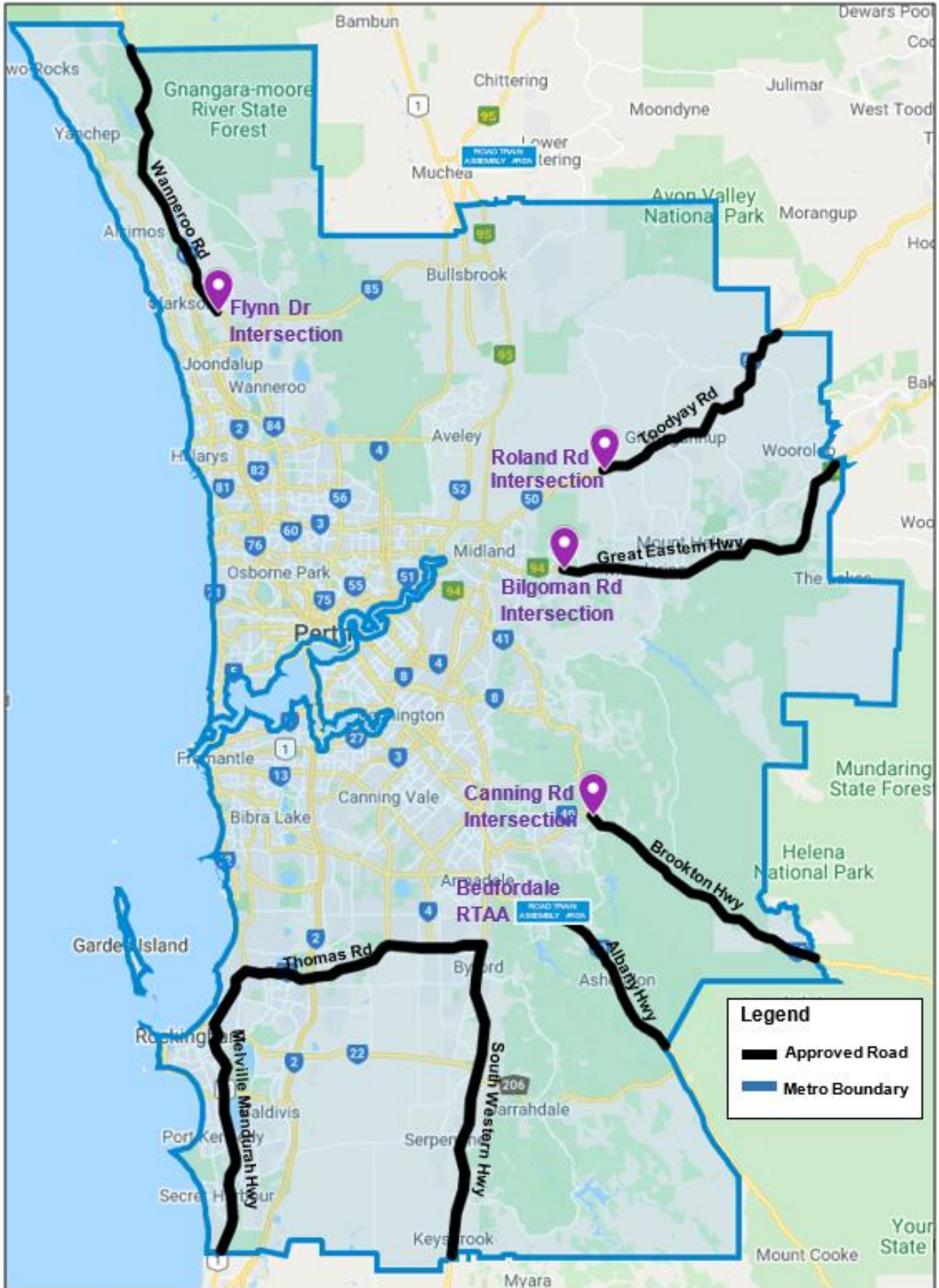
An agricultural machine exceeding 2.7 metres in width and/or 30 metres in length must not travel on Forrest Highway and Lakelands Lake Clifton Road (includes Mandurah and Dawesville Bypasses), between the intersections of Pinjarra Road and Peppermint Grove Road, (Refer to the [Appendix 3 – Mandurah Curfew Map](#)), during the following periods:

- (a) Sunset on the Thursday prior to a Monday long weekend until sunrise on the Tuesday after a Monday long weekend; and
- (b) Sunset on the Wednesday prior to a Friday long weekend until sunrise on the Monday after a Friday long weekend.

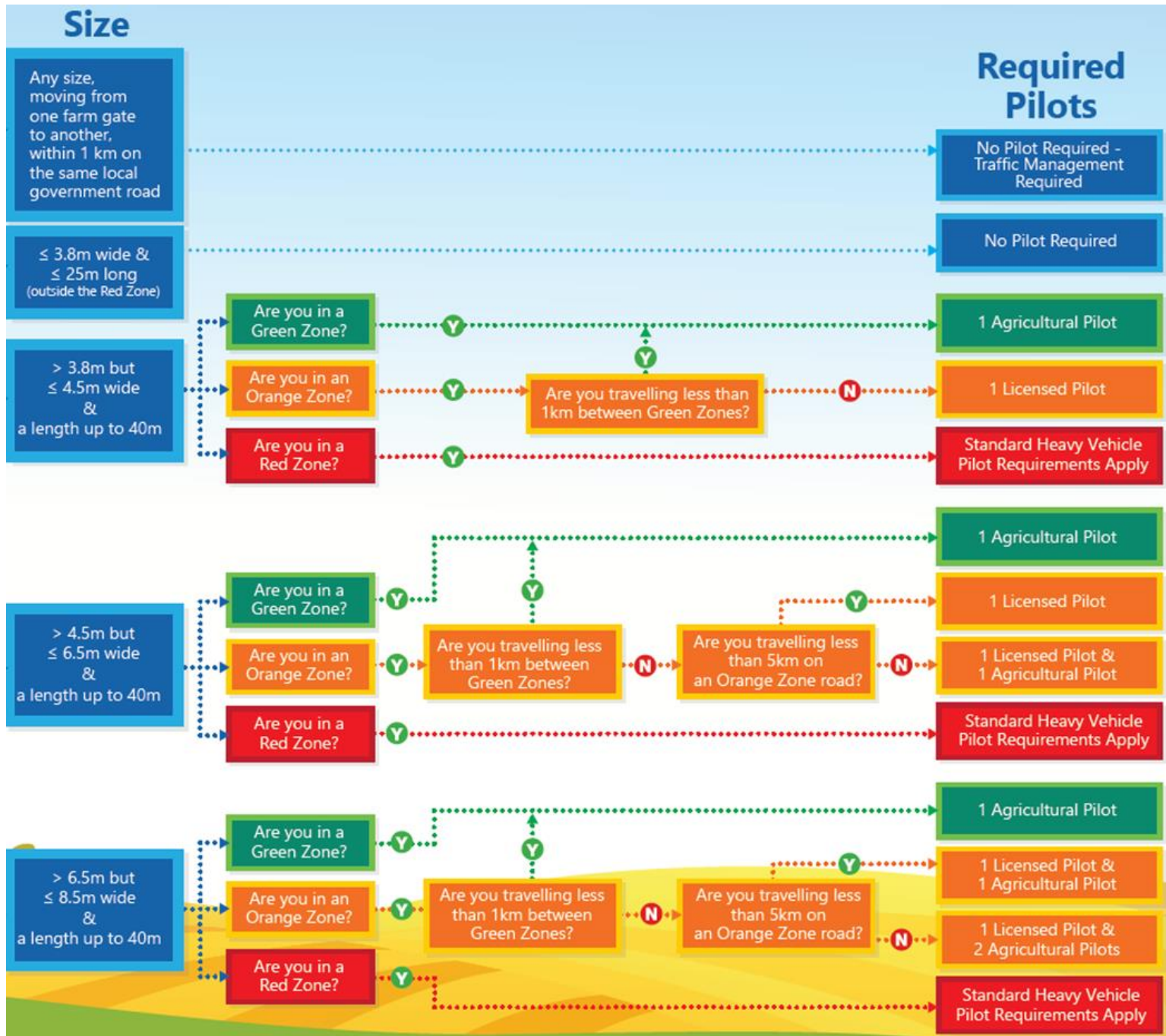
APPENDICES

Appendix	Title
Appendix 1	Metropolitan Area Map
Appendix 2	Agricultural Pilot Requirements
Appendix 3	Mandurah Curfew Map

Appendix 1: Metropolitan Area



Appendix 2: Agricultural Pilot Requirements



Green Zone – All roads within the areas bounded by Regional Distributor and State roads.

Orange Zone – All Regional Distributor and State roads, outside the Metropolitan Area.

Red Zone – All roads within the Metropolitan Area.

Note: Agricultural Pilot Zones are available on the RAV Mapping Tool on the Main Roads website.

Traffic management must be in accordance with D07#103477 - Traffic Management Requirements - Towed Agricultural Implements Crossings.

Appendix 3: Mandurah Curfew Map

