



**mainroads**  
WESTERN AUSTRALIA

*We're working for  
Western Australia.*

# **Perth Airport and Freight Access Project (Gateway WA)**

Compliance Report EPBC

2010/5384 (July 2021-June 2022)

Declaration of accuracy

In making this declaration, I am aware that sections 490 and 491 of the Environment Protection and Biodiversity Conservation Act 1999 (Cth) (EPBC Act) make it an offence in certain circumstances to knowingly provide false or misleading information or documents. The offence is punishable on conviction by imprisonment or a fine, or both. I declare that all the information and documentation supporting this compliance report is true and correct in every particular. I am authorised to bind the approval holder to this declaration and that I have no knowledge of that authorisation being revoked at the time of making this declaration.

Signed



Full name: Rob Arnott

Position: Senior Project Director

Organisation: Main Roads Western Australia ABN 50 860 676 021

Date: 21/9/2022

<b>Report Compilation and Review</b>	<b>Name and Position</b>	<b>Document Revision</b>	<b>Date</b>
Author:	Elizabeth Johnston Senior Environment Officer	Draft v1	06/09/2022
Reviewer:	John Braid Principal Environment Officer	Draft v1	19/09/2022
Author:	Elizabeth Johnston Senior Environment Officer	Final	20/09/2022

# Contents

<b>1. INTRODUCTION</b> .....	<b>5</b>
1.1 Description of Activities .....	5
1.2 Approval under the Environment Protection and Biodiversity Conservation Act 1999 .....	5
1.3 Purpose of this Report .....	7
<b>2. COMPLIANCE</b> .....	<b>8</b>
<b>3. CONCLUSION</b> .....	<b>25</b>
<b>APPENDIX 1 DEWATERING LICENCE</b> .....	<b>26</b>

# 1. Introduction

The Gateway WA Perth Airport and Freight Access Project (Gateway) focused largely on road upgrades and new construction on the section of Tonkin Highway between Great Eastern Highway and Roe Highway, as well as part of Leach Highway from Orrong Road to Perth Airport.

The Gateway project area occurred approximately 8 km east of the Perth central business district in the eastern Perth metropolitan suburbs of Redcliffe, Belmont, Cloverdale, Kewdale, Welshpool and Forrestfield (Figure 1).

The following road and bridge works were included within the Gateway project:

- A new interchange at the Tonkin Highway / Leach Highway intersection with a major new access to Perth Airport Terminals 1 and 2
- One partial free-flow interchange with design allowance for upgrade to movements in all directions (Tonkin Highway / Roe Highway)
- Two single point interchanges (Leach Highway / Abernethy Road and Tonkin Highway / Horrie Miller Drive / Kewdale Road)
- One roundabout controlled interchange (Tonkin Highway / Dunreath Drive)

Practical completion was achieved for Areas 1, 2 and 4 on 13 September 2015 and Areas 3 and 6 in March 2016. Some minor additional works were undertaken along Roe Highway in Areas 6 which were completed in April 2017.

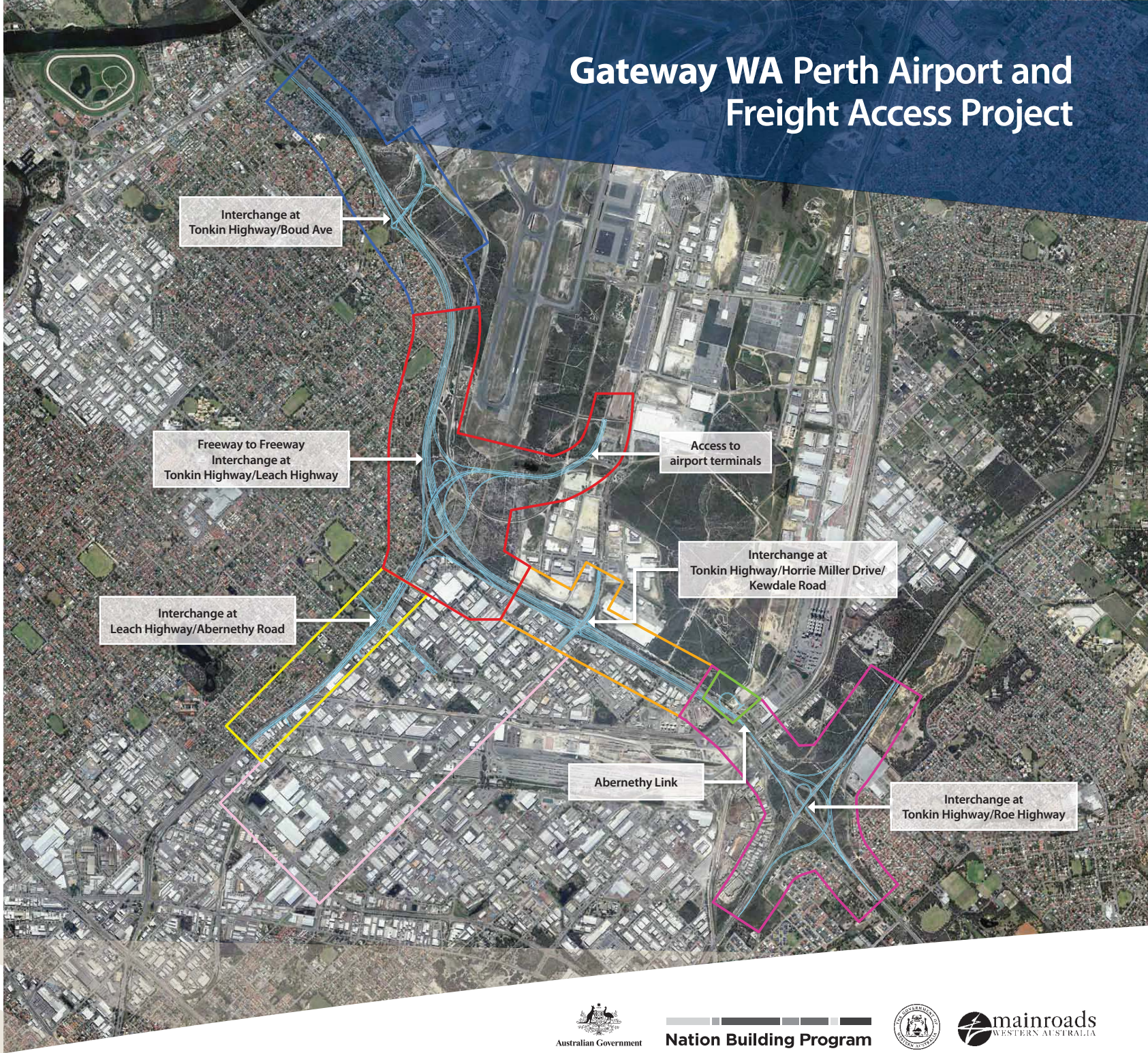
In 2020 Main Roads commenced upgrades on Tonkin Highway between Dunreath Drive to Collier Road, known as the Tonkin Gap Project. A portion of this project is completing upgrades to Tonkin Highway south of Great Eastern Highway that were approved under the EPBC 2010/5384. The remainder of Tonkin Gap (from Great Eastern Highway to Guildford Road) was referred under EPBC 2019/8545 and was determined to not be a controlled action.

## 1.1 Description of Activities

The last of the main project works for Gateway concluded in April 2017, with the final section of Roe Highway just south of Tonkin Highway reaching practical completion. In 2020 Main Roads commenced the Tonkin Gap Project. These works will include upgrades of Tonkin Highway in the northern section of the EPBC 2010/5384 approval as described in the scope of the controlled action. There were no impacts to Matters of National Environmental Significance as part of the Tonkin Gap project.

## 1.2 Approval under the Environment Protection and Biodiversity Conservation Act 1999

Gateway was referred by Main Roads to the Commonwealth Department of Sustainability, Environment, Water, Population and Communities (SEWPaC, now the Department of Climate Change, Energy, the Environment and Water - DCCEEW) under the *Environment Protection and Biodiversity Conservation Act 1999* (EPBC Act) in March 2010, as the Project impacted listed threatened species and communities as well as part of the Project taking place on Commonwealth land. SEWPaC confirmed that the Project was a controlled action under the Act and therefore a Public Environmental Report (PER) was required for formal assessment (Gateway Vision 2012). Approval under the EPBC Act was obtained in February 2013 with conditions (EPBC 2010/5384).



**Figure 1- Project Overview Map**

**Legend**

**Northern Zone**

- Area 1 – Tonkin Hwy, GEH to Elson
- Area 2 – Tonkin Hwy/Leach Hwy

**Western Zone**

- Area 4 – Leach Hwy/Abernethy Rd
- Area 5 – Kewdale Area

**Southern Zone**

- Area 3 – Tonkin Hwy/Kewdale Rd/Horrie Miller Dr
- Area 6 – Tonkin Hwy/Roe Hwy
- Area 7 – Abernethy Rd Ramp Connection

### **1.3 Purpose of this Report**

This report has been produced to meet the requirements of Condition 14 of EPBC 2010/5384, namely addressing compliance with approval conditions and implementation of any management plans and strategies as specified within the conditions throughout the Project covered by this approval.

This report is to fulfil this condition and covers the period July 2021 – June 2022.

## 2. Compliance

In the 2021-2022 reporting period, Main Roads was compliant with EPBC 2010/5384 Approval Conditions. Please refer to Table 1 for a summary of each compliance condition.

Table 1; EPBC Approval Conditions Compliance Table

Condition Number/ reference	Condition	Is the project compliant with this condition?	Evidence/Comments
1	<p>For the protection of listed threatened species, wetlands and Commonwealth land, the person taking the action must ensure that:</p> <ul style="list-style-type: none"> <li>a) no more than 27.3 hectares of Black Cockatoo foraging habitat is cleared;</li> <li>b) no more than 360 individuals of Keighery's Macarthuria in an area not exceeding 0.71ha within Area 2 are cleared;</li> <li>c) no more than 62 individuals of Wavy-leaved Smokebush are cleared;</li> <li>d) no more than 16 hectares of wetlands on Commonwealth land are removed or permanently dewatered;</li> <li>e) no more than 9.2 hectares of the Infrastructure Only Conservation Zone is cleared; and</li> <li>f) construction does not occur outside of the project footprint.</li> </ul>	Compliant	There was no clearing of MNES undertaken within the approval boundary of the project in the last year.
2	The person taking the action must prepare and submit for approval an Environment Offset Strategy (EOS) to the Minister to fund and implement an environmental offset for the better protection of listed threatened species and wetlands. The EOS must be submitted for	Compliant	<p>The Environment Offset Strategy was approved by SEWPAC (now DCCEEW) on 23 June 2013.</p> <p>This plan continues to be implemented, with no non-conformances identified to date.</p>



Condition Number/ reference	Condition	Is the project compliant with this condition?	Evidence/Comments
	<p>approval by the Minister at least one (1) month prior to the commencement of construction. The EOS must provide for the enhancement and protection of native vegetation, including wetland and swamp vegetation types, and individuals and habitat of listed threatened species. The EOS must include, but not be limited to:</p> <p>a) provision of compensatory habitat for impacts to Black Cockatoos, wetlands and the Infrastructure Only Conservation Zone including a commitment to securing the Lowlands offset as a Class A Reserve within 24 months from the commencement of construction; and</p> <p>b) a commitment to compensate for impacts to the Wavy-leaved Smokebush including establishment of a viable population of at least 120 individuals in accordance with the measures listed in Conditions 5) b) i) to vii)</p> <p>Construction must not commence until the EOS has been approved by the Minister. The EOS must be implemented as approved.</p>		<p>171 <i>Conospermum undulatum</i> were planted during the winter of 2015, with ongoing monitoring and herbicide treatment underway. Subsequent infill planting of an additional 101 plants occurred in 2017 and an additional 180 plants in 2019. Main Roads has been continuing to work toward establishing the 120 <i>C. undulatum</i> plants in the Pioneer Park</p> <p>Results to date have not yielded the intended population size within the offset area. Main Roads are currently investigating methods to close this issue out prior to further discussions with DCCEEW.</p>
3	Evidence that the Lowlands offset has been acquired (subject to Condition 5) must be submitted to the department within five (5) months of the commencement of construction.	Compliant	Lowlands offset property was acquired on 23 December 2013.
4	If the Lowlands offset is not secured as a Class A Reserve within 24 months from the commencement of construction, as per Condition 2)a), and at this time the person taking the action cannot provide to the Minister's satisfaction documentary evidence to demonstrate that all reasonable measures have been undertaken to secure the Lowlands offset as a Class A Reserve within	Compliant	The offset property was created as a Class A Reserve on 30 March 2015.

Condition Number/ reference	Condition	Is the project compliant with this condition?	Evidence/Comments
	<p>the timeframe, then all construction must cease. Construction may resume at such time as:</p> <ul style="list-style-type: none"> <li>a) the person taking the action is able to satisfy the Minister that the Lowlands offset is secured as a Class A Reserve; or</li> <li>b) the person taking the action is able to provide documentary evidence to demonstrate to the Minister's satisfaction that all reasonable measures have been undertaken to secure the Lowlands offset as a Class A Reserve; and</li> <li>c) additional compensation to the Minister's satisfaction has been provided that accounts for the additional risk of loss of the Lowlands offset not being a Class A Reserve.</li> </ul>		
5	<p>If the Lowlands offset cannot be acquired within five (5) months of the commencement of construction, then construction must cease and an alternative environmental offset strategy (AEOS) for the protection of listed threatened species and wetlands must be provided to the Minister. The AEOS must:</p> <ul style="list-style-type: none"> <li>a) provide a strategy to effectively secure a suitable direct offset within 100 km of the project site;</li> <li>b) contain direct, and if necessary, other compensatory measures that are consistent with the Environment Protection and Biodiversity Conservation Act 1999 (EPBC Act) Environmental Offset Policy (October 2012) and Offsets Assessment Guide to ensure that for the duration that the impact occurs on the project site, the AEOS contains:</li> </ul>	Not applicable	Lowlands offset property was acquired on 23 December 2013.

Condition Number/ reference	Condition	Is the project compliant with this condition?	Evidence/Comments
	<ul style="list-style-type: none"> <li>i. measures to maintain or improve ecological values to manage threats to the ecological values, including management of fire and measures to exclude people, pests, weeds and dieback;</li> <li>ii. measures to rehabilitate degraded habitat condition to a level consistent with the quality projected in the application of the EPBC Act Environmental Offset Policy (October, 2012) and the associated Offsets Assessment Guide;</li> <li>iii. maps of the proposed offset site showing vegetation quality, areas being rehabilitated (including their current and proposed quality) and dieback free zones;</li> <li>iv. performance indicators for rehabilitation;</li> <li>v. details of monitoring and reporting to the department and contingency measures if performance indicators are not met;</li> <li>vi. timeframes for the implementation and completion of the above measures; and</li> <li>vii. roles and responsibilities of personnel associated with implementing each of the above measures and funding arrangements.</li> </ul> <p>Construction must not re-commence until the AEOS has been approved by the Minister and the identified direct offset has been acquired or legally secured to the satisfaction of the Minister. The AEOS must be implemented as approved.</p>		

Condition Number/ reference	Condition	Is the project compliant with this condition?	Evidence/Comments
6	<p>The person taking the action must prepare and submit for approval a Construction Environment Management Plan (CEMP) (or plans, for each construction zone) to the Minister for the better protection of listed threatened species, permanently protected wetlands and Commonwealth land. The CEMP must be submitted for approval by the Minister at least three (3) months prior to the commencement of construction for any construction zone, except for 'Area 3' (as shown in Attachments B2 and B3), for which a CEMP must be submitted for approval by the Minister at least one (1) month prior to the commencement of construction. The CEMP must include, but not be limited to:</p> <ul style="list-style-type: none"> <li>a) details on the timing of construction works;</li> <li>b) current and detailed maps of each construction zone that include the location of: <ul style="list-style-type: none"> <li>i. permanent infrastructure and temporary works (including access tracks, vehicle parking, laydown areas and temporary material stockpiles);</li> <li>ii. no-go areas;</li> <li>iii. fauna exclusion fences and fauna underpasses; and</li> <li>iv. other physical barriers used for the protection of identified listed threatened species and permanently protected wetlands.</li> </ul> </li> <li>c) a vegetation clearing strategy that includes: <ul style="list-style-type: none"> <li>i. measures to minimise the extent of native vegetation clearing;</li> </ul> </li> </ul>	Compliant	<p>A Construction Environment Management Plan (CEMP) was approved for works in Area 3 (Tonkin/Kewdale/Horrie Miller Interchange) on 23 June 2013 by DotEE (now DCCEEW). Furthermore a CEMP superseding the Area 3 plan was approved on 18 July 2013 by DotEE (now DCCEEW) covering the entire Gateway WA Project. Construction did not commence until after the plans were approved.</p> <p><b>Tonkin Gap Project</b></p> <p>The Tonkin Gap is undertaking the works in accordance with the approved CEMP, and were compliant with the requirements. During this reporting period no environmental incidents associated with impacts to MNES occurred.</p>

Condition Number/ reference	Condition	Is the project compliant with this condition?	Evidence/Comments
	<ul style="list-style-type: none"> <li data-bbox="331 320 1032 549">ii. measures to ensure that all vehicle parking, laydown areas and temporary materials stockpiles and other temporary facilities are located within existing hardstand areas or previously cleared sites and that environmental discharges from these areas are contained, controlled and monitored;</li> <li data-bbox="331 571 994 667">iii. the erection of a fauna exclusion fence along the boundary of the project footprint and the Infrastructure Only Conservation Zone; and</li> <li data-bbox="331 689 1032 917">iv. measures undertaken to re-use and maintain removed individuals of Wavy-leaved Smokebush to revegetate other disturbed areas within the project footprint in accordance with the Guidelines for the translocation of threatened plants in Australia (1998), Australian Network for Plant Conservation, Canberra.</li> <li data-bbox="300 940 994 1003">d) a permanently protected wetland impact strategy that includes: <ul style="list-style-type: none"> <li data-bbox="336 1026 1016 1090">i. the identification, exact location and maximum extent of each permanently protected wetland</li> <li data-bbox="336 1112 981 1272">ii. measures to ensure that all vehicle parking, laydown areas and temporary materials stockpiles and other temporary facilities are located within existing hardstand areas or previously cleared sites;</li> <li data-bbox="336 1294 1016 1390">iii. measures to ensure that any environmental discharges that may enter any permanently protected wetland are prevented, or controlled</li> </ul> </li> </ul>		

Condition Number/ reference	Condition	Is the project compliant with this condition?	Evidence/Comments
	<p>and monitored to meet acceptable water quality criteria;</p> <p>iv. details of the duration, location, methodology used, and results of, a baseline study of water quality prior to construction for use as a benchmark for monitoring as per condition 6) d) vi);</p> <p>v. stated acceptable water quality criteria during construction and operation;</p> <p>vi. measures to monitor water quality monthly during construction and quarterly for three (3) years following practical completion;</p> <p>vii. the timeframes for, and nature of, corrective, remedial or restorative actions to be taken where a deviation from the criteria specified in condition 6) d) v) occurs; and</p> <p>viii. if the corrective, remedial or restorative actions of condition 6) d) vii) cannot restore water quality to a point equivalent to, or better than, the baseline condition or acceptable criteria specified in conditions 6) d) iv) or 6) d) v) within 12 months of first detecting a degradation, then compensation for the loss of each permanently protected wetland so affected must be provided in accordance with condition 5) b).</p> <p>e) a hygiene management program to minimise the spread of weeds and dieback within the project footprint, during construction and operation, which must include, but is not limited to:</p>		

Condition Number/ reference	Condition	Is the project compliant with this condition?	Evidence/Comments
	<ul style="list-style-type: none"> <li>i. cleaning procedures for vehicles, equipment and plant prior to entering the project footprint; and</li> <li>ii. the certification of the absence of weeds and <i>Phytophthora cinnamomi</i> in any imported soils.</li> <li>f) maintenance measures to prevent the slashing/mowing or accidental clearing of Keighery's Macarthuria (<i>Macarthuria keigheryi</i>) and Wavy-leaved Smokebush from ongoing maintenance activities;</li> <li>g) sediment and erosion control measures to restrict the movement of sediment onto and from the project footprint; and</li> <li>h) stormwater management measures compliant with the Stormwater Management Manual for Western Australia and the quantity and quality criteria set by the WA Department of Water.</li> </ul> <p>Construction must not commence until the CEMP has been approved by the Minister. The CEMP must be implemented as approved.</p>		
7	<p>The person taking the action must prepare and submit for approval an Operation Environment Management Plan (OEMP) (or plans, for each construction zone) to the Minister for the better protection of listed threatened species, permanently protected wetlands and Commonwealth land. The OEMP must be submitted for approval by the Minister at least one (1) month prior to practical completion of any construction zone. The OEMP must include, but not be limited to:</p>	Compliant	<p>The Operational Environment Management Plan was approved by DotEE (now DCCEEW) on 7 July 2015.</p> <p>No environmental incidents associated with impacts to MNES as part of the operation occurred during this reporting period.</p>

Condition Number/ reference	Condition	Is the project compliant with this condition?	Evidence/Comments
	<p>a) measures to prevent the slashing/mowing or accidental clearing of Keighery's Macarthuria (<i>Macarthuria keigheryi</i>) and Wavy-leaved Smokebush from ongoing maintenance activities;</p> <p>b) sediment and erosion control measures to restrict the movement of sediment onto and from the project footprint; and</p> <p>c) stormwater management measures compliant with the Stormwater Management Manual for Western Australia and the quantity and quality criteria set by the WA Department of Water.</p> <p>Operation must not commence until the OEMP has been approved by the Minister. The OEMP must be implemented as approved.</p>		
8	<p>The person taking the action must prepare and submit for approval a Rehabilitation Management Plan (RMP) (or plans, for each construction zone) to the Minister for the better protection of listed threatened species, permanently protected wetlands and Commonwealth land. The RMP must be submitted for approval by the Minister at least one (1) month prior to the commencement of construction for any construction zone. The RMP must include, but not be limited to:</p> <p>a) the methodology and record keeping to baseline environmental quality prior to construction;</p> <p>b) measures and timeframes to re-establish or rehabilitate any permanently protected wetlands or listed threatened species habitat that is disturbed during construction to the same or higher quality</p>	Compliant	<p>The current Rehabilitation Management Plan was approved on 18 July 2013 and continues to be implemented.</p> <p>Revegetation works within the majority of the project defects period.</p>



Condition Number/ reference	Condition	Is the project compliant with this condition?	Evidence/Comments
	<p>that existed prior to disturbance, including criteria to measure rehabilitation success;</p> <p>c) measures to monitor rehabilitated areas to determine its success against the criteria established under condition 8) b); and</p> <p>d) contingency actions that will be implemented should rehabilitation not meet success criteria established under condition 8) b).</p> <p>Construction must not commence until the RMP has been approved by the Minister. The RMP must be implemented as approved.</p>		
9	<p>The person taking the action must obtain a Dewatering Licence to undertake dewatering where it occurs on state land. A copy of the Dewatering Licence must be submitted to the department at least one (1) month prior to the commencement of dewatering.</p>	Non-Compliant	<p>Dewatering activities occurred for the Tonkin Gap works within this reporting period. A Dewatering Licence was obtained under the West Australian <i>Rights in Water and Irrigation Act 1914</i> and is attached at Appendix 1.</p> <p>A copy of the Licence was not supplied to DCCEEW within 1 month prior to dewatering. This Licence has now been supplied as part of this Compliance Report.</p>
10	<p>The person taking the action must submit to the Minister for approval, a Dewatering Management Plan (DMP) (or plans, for each construction zone) relating to Commonwealth and state land within the project footprint that is consistent with its corresponding Dewatering Licence required under Condition 9, and contains monitoring, mitigation and management measures. The DMP must be submitted for approval by the Minister at least three (3) months prior to the commencement of dewatering for any construction zone except for 'Area 3' (as shown in Attachments B2 and B3) for which a DMP must be submitted for approval by the</p>	Compliant	<p>The works were conducted in accordance with the approved the with the Dewatering Licence obtained under the West Australian <i>Rights in Water and Irrigation Act 1914</i>.</p> <p>All dewatering activities were conducted in accordance with the approved Dewatering Management Plan.</p>

Condition Number/ reference	Condition	Is the project compliant with this condition?	Evidence/Comments
	Minister at least one (1) month prior to the commencement of dewatering. Dewatering must not commence until the DMP for the relevant construction zone has been approved by the Minister. The DMP must be implemented as approved.		
11	<p>The person taking the action must prepare and submit a Community Issues Management Plan (CIMP) that includes but is not limited to:</p> <ul style="list-style-type: none"> <li>a) a consultation strategy to address the concerns of relevant stakeholders relating to visual amenity, environmental degradation and noise impacts, including measures to consult with affected residents regarding appropriate amelioration designs; and</li> <li>b) a communication strategy to inform the public regarding construction activities and expected noise impacts.</li> </ul> <p>The CIMP must be submitted to the department at least one (1) month prior to commencement of construction and whenever the CIMP is revised.</p>	Compliant	A Stakeholder Engagement Plan was submitted to DotEE (now DCCEEW) and found to meet the requirements of the approval conditions on 23 June 2013.
12	Within 20 days after the commencement of construction, the person taking the action must advise the department in writing of the actual date of commencement.	Compliant	Compliance as per 2014-2015 annual report.
13	The person taking the action must maintain accurate records substantiating all activities associated with or relevant to the conditions of approval, including consultation with relevant stakeholders and measures taken to implement the management plans and strategies required by this approval, and make them available upon request to the department. Such records	Compliant	<p><b>Operation</b></p> <p>Main Roads is an independently certified under ISO 14001 and as such maintains accurate records of activities, environmental processes and incidents.</p> <p><b>Construction Tonkin Gap</b></p>

Condition Number/ reference	Condition	Is the project compliant with this condition?	Evidence/Comments
	may be subject to audit by the department or an independent auditor in accordance with section 458 of the EPBC Act, or used to verify compliance with the conditions of approval. Summaries of audits will be posted on the department's website. The results of audits may also be publicised through the general media.		<p>The Tonkin Gap Alliance maintains accurate records of all activities relevant to the approval conditions. This includes all relevant consultation with stakeholders and measure taken to implement the management plans and strategies required by this approval.</p> <p>DCCEEW has not requested these details to date, nor have they conducted an audit on the project.</p>
14	Within three months of every 12 month anniversary of the commencement of construction, the person taking the action must publish a report on their website addressing compliance with each of the conditions of this approval, including implementation of any management plans and strategies as specified in the conditions. Documentary evidence providing proof of the date of publication and non-compliance with any of the conditions of this approval must be provided to the department at the same time as the compliance report is published.	Compliant	<p>The 12 month anniversary of the commencement of the action is on July 2022. This report has been published on the MRWA website. Documentary evidence will be provided to the Department at the same time as this document is published on the website. The compliance report is located on the Main Roads website at the following location:</p> <p><a href="https://www.mainroads.wa.gov.au/community-environment/environment/construction-project-reports/">https://www.mainroads.wa.gov.au/community-environment/environment/construction-project-reports/</a></p>
15	Upon the direction of the Minister, the person taking the action must ensure that an independent audit of compliance with the conditions of approval is conducted and a report submitted to the Minister. The independent auditor must be approved by the Minister prior to the commencement of the audit. Audit criteria must be agreed to by the Minister and the audit report must address the criteria to the satisfaction of the Minister.	Compliant	The Minister has not given direction for an independent audit to be undertaken to date.
16	If the person taking the action wishes to carry out any activity otherwise than in accordance with the management plans/strategy as specified in the conditions, the person taking the action must submit to the department for the Minister's written approval a	Compliant	No changes to management plans or strategies have been implemented without prior approval from DCCEEW.

Condition Number/ reference	Condition	Is the project compliant with this condition?	Evidence/Comments
	revised version of that management plan/strategy. The varied activity shall not commence until the Minister has approved the varied management plan/strategy in writing. The Minister will not approve a varied management plan/strategy unless the revised management plan/strategy would result in an equivalent or improved environmental outcome over time. If the Minister approves the revised management plan/strategy that management plan/strategy must be implemented in place of the management plan/strategy originally approved.		
17	If the Minister believes that it is necessary or convenient for the better protection of a listed threatened species, wetland or the Commonwealth land to do so, the Minister may request that the person taking the action make specified revisions to the management plans/strategy specified in the conditions and submit the revised management plan/strategy for the Minister's written approval. The person taking the action must comply with any such request. The revised approved management plan/strategy must be implemented. Unless the Minister has approved the revised management plan/strategy, then the person taking the action must continue to implement the management plan/strategy originally approved, as specified in the conditions.	Compliant	No changes to any management plans or strategies have been requested by DCCEEW to date.
18	If, at any time after five years from the date of this approval, the person taking the action has not substantially commenced the action, then the person taking the action must not substantially commence the action without the written agreement of the Minister.	Not applicable	Action was substantially commenced in 2013.

Condition Number/ reference	Condition	Is the project compliant with this condition?	Evidence/Comments
19	Unless otherwise agreed to in writing by the Minister, the person taking the action must publish management plans and the strategy referred to in these conditions of approval on their website. Each management plan and strategy must be published on the website within one month of being approved.	Compliant	All required management plans were published on the Main Roads website.
20	<p>For the better protection of Keighery's Macarthuria, the person taking the action must prepare and submit to the department a Keighery's Macarthuria Offset and Management Plan (KMOMP) to address impacts to Keighery's Macarthuria occurring as a result of construction and operation. The KMOMP must include but not necessarily be limited to:</p> <ul style="list-style-type: none"> <li>a) a commitment to establish, secure and maintain a viable population of at least 635 individuals of Keighery's Macarthuria within the recipient site;</li> <li>b) detailed methodology, sequencing and timing for translocation of individuals, rootstock and/or seedbank from the donor site to the recipient site that: <ul style="list-style-type: none"> <li>i. describes measures to ensure the recipient site is suitable habitat for Keighery's Macarthuria on the basis of equivalent soil type, topography, slope, aspect, micro-hydrology and surrounding vegetation to the donor site and is appropriately prepared and secured (e.g fencing, lack of debris) to receive translocated individuals, rootstock and/or seedbank;</li> <li>ii. demonstrates activities will be undertaken in accordance with the Guidelines for the translocation of threatened plants in Australia</li> </ul> </li> </ul>	Compliant	<p>A Keighery's Macarthuria Offset and Management Plan (KMOMP) was submitted and subsequently approved by DotEE (now DCCEW) on 8 October 2013.</p> <p>The first round of planting of Keighery's Macarthuria occurred during winter 2014 with 915 plants being planted, consisting of 895 tubestock and 20 mature 'transplant' individuals. Monitoring of the site has shown a survival rate of approximately 53% of tubestock and 11% of the transplant individuals.</p> <p>A further 1,000 Keighery's Macarthuria tubestock, taken from cuttings were planted in winter 2015 to replace those plants lost as well as increase the population size at the translocation site.</p> <p>Results to date have not yielded the intended population size within the offset area. Main Roads are currently investigating methods to close this issue out prior to further discussions with DCCEW. This is anticipated to be undertaken shortly.</p>

Condition Number/ reference	Condition	Is the project compliant with this condition?	Evidence/Comments
	<p>(1998), Australian Network for Plant Conservation, Canberra with any deviations clearly identified and justified;</p> <p>iii. provides detailed maps of the current location of known Keighery's Macarthuria in relation to construction activities and the locations that translocation is intended to occur within the recipient site showing the relevant boundaries of protected/conservation areas in relation to these and all relevant connectivity to existing populations;</p> <p>iv. identifies all critical risk and success factors related to translocation (e.g mechanised or hand transplanting technique; seed storage conditions and durations; depth of planting; planting density) and how these shall be managed to maximise the successful re-establishment of Keighery's Macarthuria at the recipient site and minimise adverse impacts upon the extant environment at the recipient site; and</p> <p>v. ensures individuals from the donor site and/or insurance population (see below) are planted within the recipient site within 18 months from the commencement of removal of any individuals of Keighery's Macarthuria;</p> <p>c) detailed methodology, sequencing and timing for development, maintenance and use of an off-site insurance population that represents the genetic diversity removed from the donor site and is of sufficient size and health that it can be used to</p>		

Condition Number/ reference	Condition	Is the project compliant with this condition?	Evidence/Comments
	<p>supplement translocation as described in 20c) to establish a viable population of the specified size;</p> <p>d) measures to ensure that insurance population plants are propagated to a level of plant health and fecundity where there is an extremely low likelihood of plants dying prior to any removal of plants at the donor site occurring<sup>1</sup>:</p> <p>e) measures to ensure that the insurance population contains sufficient numbers to: safeguard against the complete loss of all individuals at the recipient site following translocation; and the balance of individuals required to achieve a conservation gain at the recipient site in accordance with the department's Environmental Offsets Policy (2012) including allowances for any losses under field conditions;</p> <p>f) commitment that the insurance population will be established prior to the removal of any Keighery's Macarthuria plants from the donor site and that the insurance population will not be discontinued unless agreed to in writing from the department; Note: The department's agreement to a discontinued insurance population is reliant upon persistence of a viable population of at least 635 Keighery's Macarthuria at the recipient site.</p> <p>g) measures to ensure that any individuals of Keighery's Macarthuria at the donor site or recipient site or any other area containing Keighery's Macarthuria otherwise affected by construction and operation are managed in full accordance with the</p>		

Condition Number/ reference	Condition	Is the project compliant with this condition?	Evidence/Comments
	<p>requirements of the Keighery's Macarthuria Recovery Plan; and</p> <p>h) details for recording, monitoring, cataloguing and sharing data and information of the translocation of Keighery's Macarthuria from the donor site to the recipient site and the application of an insurance population at a standard suitable for publication in a peer reviewed scientific publication. Such information must be provided to government agencies upon request.</p> <p>The KMOMP must be approved by the minister prior to the removal of any individuals of Keighery's Macarthuria. The KMOMP must be implemented as approved.</p>		



### **3. Conclusion**

In the 2021-2022 reporting period the Tonkin Gap Project commenced construction

No environmental incidents associated with impacts to MNES have occurred during this last year. One non-compliance occurred as the Dewatering Licence was not supplied to DCCEEW within 1 month prior to dewatering. This Licence has now been supplied as part of this Compliance Report.

## **Appendix 1 Dewatering Licence**



## LICENCE TO CONSTRUCT OR ALTER WELL

Granted by the Minister under section 26D of the Rights in Water and Irrigation Act 1914

<b>Licensee(s)</b>	B.M.D. Constructions Pty. Limited & BG&E Pty Limited & Georgiou Group Ltd & GHD Pty Ltd & WA Limestone Contracting Pty Ltd
<b>Description of Water Resource</b>	Perth Perth - Superficial Swan
<b>Location of Well(s)</b>	Road Reserve - Pin12279571

<b>Authorised Activities</b>	<b>Activity</b>	<b>Location of Activity</b>
	Construct dewatering spears, excavation(s) or soak(s).	Lot 12718 On Plan 193116 - Volume/Folio Lr3109/255 - Lot 12718 Morrison St Redcliffe - Selby Park LOT 153 ON PLAN 412099 - Volume/Folio LR3170/279 - Lot 153  Lot 168 On Plan 4987 Volume/Folio 88/90a Lot 168 Great Eastern Hwy Redcliffe Great Eastern Hwy LOT 3 ON PLAN 11355 - Volume/Folio LR3169/435 - Lot 3  LOT 36 ON PLAN 415035 - Volume/Folio LR3170/964 - Lot 36 LOT 4 ON PLAN 11355 - Volume/Folio LR3169/444 - Lot 4  LOT 498 ON PLAN 5047 - Volume/Folio 1655/13 - Lot 498 TONKIN HWY REDCLIFFE LOT 499 ON PLAN 5047 - Volume/Folio 1655/14 - Lot 499 TONKIN HWY REDCLIFFE LOT 50 ON DIAGRAM 13520 - Volume/Folio 1908/412 - Lot 50 MORRISON ST REDCLIFFE LOT 500 ON PLAN 15914 - Volume/Folio LR3155/75 - Lot 500 LOT 500 ON PLAN 4987 - Volume/Folio LR3156/215 - Lot 500 LOT 501 ON PLAN 15914 - Volume/Folio LR3155/76 - Lot 501  LOT 5230 ON PLAN 4987 - Volume/Folio LR3155/72 - Lot 5230 GREAT EASTERN HWY REDCLIFFE LOT 7868 ON PLAN 15914 - Volume/Folio LR3155/74 - Lot 7868  LOT 8354 ON PLAN 4987 - Volume/Folio LR3155/73 - Lot 8354 MORRISON ST REDCLIFFE Road Reserve - Pin11044120  Road Reserve - Pin11576383  Road Reserve - Pin11610993  Road Reserve - Pin11610994  Road Reserve - Pin11610995  Road Reserve - Pin11611078  Road Reserve - Pin11611079

**This Licence is granted subject to the Rights in Water and Irrigation Regulations 2000.**



## LICENCE TO CONSTRUCT OR ALTER WELL

Granted by the Minister under section 26D of the Rights in Water and Irrigation Act 1914

Road Reserve - Pin11611114
Road Reserve - Pin11611115
Road Reserve - Pin11611116
Road Reserve - Pin11611122
Road Reserve - Pin11612091
Road Reserve - Pin11612144
Road Reserve - Pin11612146
Road Reserve - Pin11612162
Road Reserve - Pin11668956
Road Reserve - Pin11668958
Road Reserve - Pin11669770
Road Reserve - Pin11745086
Road Reserve - Pin11798427
Road Reserve - Pin11798429
Road Reserve - Pin11798430
Road Reserve - Pin11802548
Road Reserve - Pin11870720
Road Reserve - Pin12279552
Road Reserve - Pin12279553
Road Reserve - Pin12279568
Road Reserve - Pin12279570
Road Reserve - Pin12279571
Road Reserve - Pin12279572
Road Reserve - Pin12279573
Road Reserve - Pin12279574
Road Reserve - Pin12279575
Road Reserve - Pin12279576
Road Reserve - Pin1228946
Road Reserve - Pin1256317



## LICENCE TO CONSTRUCT OR ALTER WELL

Granted by the Minister under section 26D of the Rights in Water and Irrigation Act 1914

		Road Reserve - Pin1256319 Road Reserve - Pin1256325 Road Reserve - Pin1256329 Road Reserve - Pin1256338 Road Reserve - Pin1256340 Road Reserve - Pin1256361 Road Reserve - Pin1353015 Road Reserve - Pin1353019 Road Reserve - Pin1353020 Tokin Hwy Road Reserves - Between Great Eastern Hwy Ascot and Marshall Rd Whiteman
<b>Duration of Licence</b>	From 19 November 2021 to 18 November 2023	

**This Licence is subject to the following terms, conditions and restrictions:**

**End of terms, conditions and restrictions**



## LICENCE TO TAKE WATER

Granted by the Minister under section 5C of the Rights in Water and Irrigation Act 1914

<b>Licensee(s)</b>	B.M.D. Constructions Pty. Limited & BG&E Pty Limited & Georgiou Group Ltd & GHD Pty Ltd & WA Limestone Contracting Pty Ltd		
<b>Description of Water Resource</b>	Perth Perth - Superficial Swan	<b>Annual Water Entitlement</b>	207,360kL
<b>Location of Water Source</b>	Road Reserve - Pin12279572		

Authorised Activities	Taking of water for	Location of Activity
	Dewatering for construction purposes	Lot 12718 On Plan 193116 - Volume/Folio Lr3109/255 - Lot 12718 Morrison St Redcliffe - Selby Park LOT 153 ON PLAN 412099 - Volume/Folio LR3170/279 - Lot 153  Lot 168 On Plan 4987 Volume/Folio 88/90a Lot 168 Great Eastern Hwy Redcliffe Great Eastern Hwy LOT 3 ON PLAN 11355 - Volume/Folio LR3169/435 - Lot 3  LOT 36 ON PLAN 415035 - Volume/Folio LR3170/964 - Lot 36 LOT 4 ON PLAN 11355 - Volume/Folio LR3169/444 - Lot 4  LOT 498 ON PLAN 5047 - Volume/Folio 1655/13 - Lot 498 TONKIN HWY REDCLIFFE LOT 499 ON PLAN 5047 - Volume/Folio 1655/14 - Lot 499 TONKIN HWY REDCLIFFE LOT 50 ON DIAGRAM 13520 - Volume/Folio 1908/412 - Lot 50 MORRISON ST REDCLIFFE LOT 500 ON PLAN 15914 - Volume/Folio LR3155/75 - Lot 500  LOT 500 ON PLAN 4987 - Volume/Folio LR3156/215 - Lot 500  LOT 501 ON PLAN 15914 - Volume/Folio LR3155/76 - Lot 501  LOT 5230 ON PLAN 4987 - Volume/Folio LR3155/72 - Lot 5230 GREAT EASTERN HWY REDCLIFFE LOT 7868 ON PLAN 15914 - Volume/Folio LR3155/74 - Lot 7868  LOT 8354 ON PLAN 4987 - Volume/Folio LR3155/73 - Lot 8354 MORRISON ST REDCLIFFE Road Reserve - Pin11044120  Road Reserve - Pin11576383  Road Reserve - Pin11610993  Road Reserve - Pin11610994  Road Reserve - Pin11610995  Road Reserve - Pin11611078  Road Reserve - Pin11611079

**This Licence is granted subject to the Rights in Water and Irrigation Regulations 2000.**



## LICENCE TO TAKE WATER

Granted by the Minister under section 5C of the Rights in Water and Irrigation Act 1914

Road Reserve - Pin11611114
Road Reserve - Pin11611115
Road Reserve - Pin11611116
Road Reserve - Pin11611122
Road Reserve - Pin11612091
Road Reserve - Pin11612144
Road Reserve - Pin11612146
Road Reserve - Pin11612162
Road Reserve - Pin11668956
Road Reserve - Pin11668958
Road Reserve - Pin11669770
Road Reserve - Pin11745086
Road Reserve - Pin11798427
Road Reserve - Pin11798429
Road Reserve - Pin11798430
Road Reserve - Pin11802548
Road Reserve - Pin11870720
Road Reserve - Pin12279552
Road Reserve - Pin12279553
Road Reserve - Pin12279568
Road Reserve - Pin12279570
Road Reserve - Pin12279571
Road Reserve - Pin12279572
Road Reserve - Pin12279573
Road Reserve - Pin12279574
Road Reserve - Pin12279575
Road Reserve - Pin12279576
Road Reserve - Pin1228946
Road Reserve - Pin1256317



## LICENCE TO TAKE WATER

Granted by the Minister under section 5C of the Rights in Water and Irrigation Act 1914

		Road Reserve - Pin1256319 Road Reserve - Pin1256325 Road Reserve - Pin1256329 Road Reserve - Pin1256338 Road Reserve - Pin1256340 Road Reserve - Pin1256361 Road Reserve - Pin1353015 Road Reserve - Pin1353019 Road Reserve - Pin1353020 Tokin Hwy Road Reserves - Between Great Eastern Hwy Ascot and Marshall Rd Whiteman
<b>Duration of Licence</b>	From 19 November 2021 to 18 November 2023	

**This Licence is subject to the following terms, conditions and restrictions:**

1. The annual water year for water taken under this licence is defined as 1 December to 30 November.
2. This licence is not transferable.

**End of terms, conditions and restrictions**