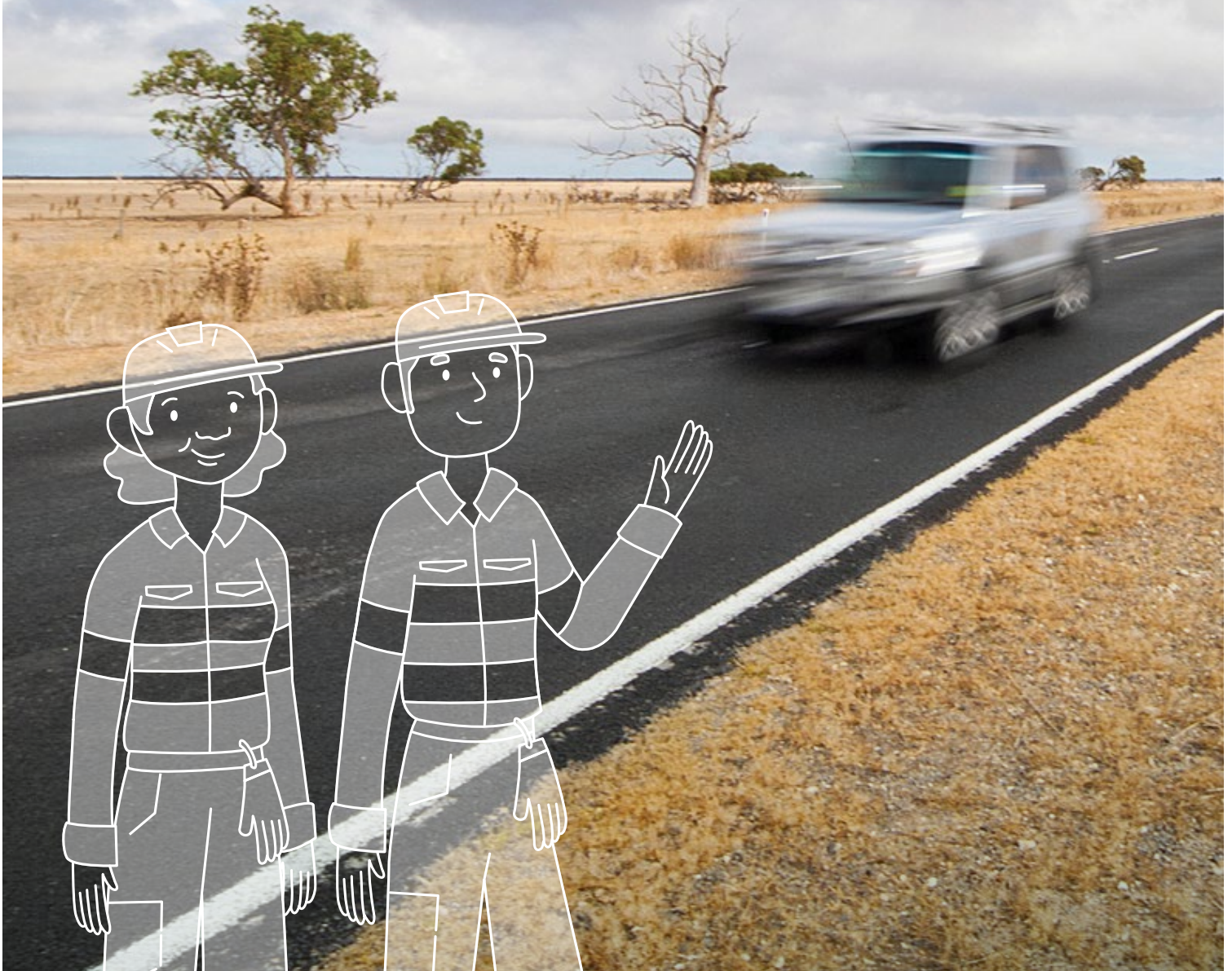


# GOING → PLACES



**GOLDFIELDS-ESPERANCE**

**Where will a career  
at Main Roads take you?**



**mainroads**  
WESTERN AUSTRALIA







"Working in the regions is really hands-on and teaches you a lot very quickly. The opportunities are endless."



Main Roads – Regional Engineering Associate Traineeship Program

## Regional Engineering Associate Traineeship Program

The road ahead is filled with opportunities when you start your career with Main Roads. With a huge diversity of projects, roles and locations available throughout WA, going places has never been more rewarding.

Our Regional Engineering Associate Traineeship Program will allow you to kick-start your career within the Goldfields-Esperance region. Here, you'll take on a diverse range of challenges while enjoying flexible working hours that give you more time to spend with family and friends.



Regional Engineering Associate Traineeship Program – Main Roads



## Keeping WA connected

Main Roads has been connecting people and places throughout WA since 1926, with our \$48 billion road network one of the largest in the world. As a WA State Government Agency, we are committed to providing a safe and efficient road network for all, working across an incredibly diverse range of projects every year.

We're proud to play a role in bringing people together, whether it's out on the road or within our close-knit teams. At Main Roads, possibilities are everywhere – all you need to do is put your hand up.

## About the program

Our 2-year Regional Engineering Associate Traineeship Program offers an incredible opportunity for you to begin a rewarding career with Main Roads, with hands-on experience across drafting, construction, materials engineering and structural design.

- Learn road construction techniques through direct experience on small construction projects including road widening or passing lanes; road maintenance projects including reseal or pavement repair; or larger projects including new road construction
- Assist in drafting pavement and surfacing designs that contribute to improvements to the regional road network and improve road safety
- Provide technical support to various asset management planning activities for road and bridge work programs
- Get involved in assessing road condition and conduct field and laboratory testing on a variety of materials, including soils and pavements



Main Roads – Regional Engineering Associate Traineeship Program



# GOING → PLACES

## How you'll go places



Regional Engineering Associate Traineeship Program – Main Roads

## Regional benefits

In addition to a competitive base salary and 9.5% superannuation, you'll also receive a range of benefits in the Goldfields-Esperance region, including:

Commuted Overtime Allowance of 13.5% per annum

District Allowance of \$2,354 per annum

After 12 months of service, you can access an annual leave travel concession (reimbursement of the cost of return airfares to Perth once per annum).

Generous power subsidies paid fortnightly

A communications subsidy of up to \$20 per month



**“ There’s a definite sense of belonging and a great support network here. People really want to see you succeed.”**



## Start your journey with Main Roads today

To apply for the program, you will need to have completed Year 12 by the end of 2020, with a C-grade average or above in English and Maths, plus hold a C class driver’s licence. We’re also looking for people who are willing to get involved, take on new responsibilities and work together as a team to create a lasting positive impact for all.

If this sounds like you, we want to hear from you. To start a career that’s really going places, apply today at [mainroads.wa.gov.au](https://mainroads.wa.gov.au)



**mainroads**  
WESTERN AUSTRALIA

# GOING PLACES

[mainroads.wa.gov.au](http://mainroads.wa.gov.au)

