

Appendix B – Relevant legislation, background information and conservation code

Relevant legislation

Federal *Environment Protection and Biodiversity Conservation Act 1999*

The *Environment Protection and Biodiversity Conservation Act 1999* (EPBC Act) is the Federal Government's central piece of environmental legislation. It provides a legal framework to protect and manage nationally and internationally important flora, fauna, ecological communities and heritage places, which are defined in the EPBC Act as Matters of National Environmental Significance (MNES).

The biological aspects listed as MNES include:

- Nationally threatened flora and fauna species and ecological communities
- Migratory species

A person must not undertake an action that has, will have, or is likely to have a significant impact (direct or indirect) on MNES, without approval from the Federal Minister for the Environment.

The EPBC Act is administered by the Department of the Environment and Energy (DEE).

State *Environmental Protection Act 1986*

The *Environmental Protection Act 1986* (EP Act) is the primary legislative Act dealing with the protection of the environment in Western Australia. The Act allows the Environmental Protection Authority (EPA), to prevent, control and abate pollution and environmental harm, for the conservation, preservation, protection, enhancement and management of the environment and for matters incidental to or connected with the foregoing. Part IV of the EP Act is administered by the EPA and makes provisions for the EPA to undertake environmental impact assessment of significant proposals, strategic proposals and land use planning schemes.

The Department of Water and Environment Regulation (DWER) is responsible for administering the clearing provisions of the EP Act (Part V). Clearing of native vegetation in Western Australia requires a permit from the DWER, unless exemptions apply. Applications for clearing permits are assessed by the Department and decisions are made to grant or refuse the application in accordance with the Act. When making a decision the assessment considers clearing against the ten clearing principles as specified in Schedule 5 of the EP Act:

- a) Native vegetation should not be cleared if it comprises a high level of biodiversity.
- b) Native vegetation should not be cleared if it comprises the whole or a part of, or is necessary for the maintenance of a significance habitat for fauna indigenous to Western Australia.
- c) Native vegetation should not be cleared if it includes, or is necessary, for the continued existence of rare flora.
- d) Native vegetation should not be cleared if it comprises the whole or part of native vegetation in an area that has been extensively cleared.
- e) Native vegetation should not be cleared if it is significant as a remnant of native vegetation in an area that has been extensively cleared.
- f) Native vegetation should not be cleared if it is growing in, or in association with, an environment associated with a watercourse or wetland.
- g) Native vegetation should not be cleared if the clearing of the vegetation is likely to have an impact on the environmental values of any adjacent or nearby conservation area.
- h) Native vegetation should not be cleared if the clearing of the vegetation is likely to cause appreciable land degradation.

- i) Native vegetation should not be cleared if the clearing of the vegetation is likely to cause deterioration in the quality of surface or underground water.
- j) Native vegetation should not be cleared if clearing the vegetation is likely to cause, or exacerbate, the incidence of flooding.

Exemptions for clearing include clearing that is a requirement of a written law or authorised under certain statutory processes (listed in Schedule 6 of the EP Act) and exemptions for prescribed low impact day-to-day activities (prescribed in the Environmental Protection (Clearing of Native Vegetation) Regulations 2004); these exemptions do not apply in environmentally sensitive areas (ESAs).

State Biodiversity and Conservation Act 2016

The *Biodiversity Conservation Act 2016* (BC Act) provides for the conservation, protection and promotion of the ecologically sustainable use of biodiversity components in Western Australia. The BC Act replaced both the *Wildlife Conservation Act 1950* (WC Act) and the *Sandalwood Act 1929* (Sandalwood Act) as of 1 January 2016. To attain the objectives of the BC Act, principles of ecological sustainable development have been established:

- Decision-making processes should effectively integrate both long-term and short-term economic, environmental, social and equitable considerations
- If there are threats of serious or irreversible environmental damage, lack of full scientific certainty should not be used as a reason for postponing measures to prevent environmental degradation
- The present generation should ensure that the health, diversity and productivity of the environment is maintained or enhanced for the benefit of future generations
- The conservation of biodiversity and ecological integrity should be a fundamental consideration in decision-making
- Improved valuation, pricing and incentive mechanisms should be promoted

The BC Act is administered by the Department of Biodiversity Conservation and Attractions (DBCA)

State Biosecurity and Agriculture Management Act 2007

The *Biosecurity and Agriculture Management Act 2007* (BAM Act) and associated regulations are administered by the Department of Primary Industries and Regional Development (DPIRD) and replace the repealed *Agriculture and Related Resources Protection Act 1976*. The main purposes of the BAM Act and its regulations are to:

- Prevent new animal and plant pests (vermin and weeds) and diseases from entering WA
- Manage the impact and spread of those pests already present in the state
- Safely manage the use of agricultural and veterinary chemicals
- Increased control over the sale of agricultural products that contain violative chemical residues

The Western Australian Organism List (WAOL) provides the status of organisms which have been categorised under the BAM Act. A Declared Pest is a prohibited organism or an organism for which a declaration under Section 22(2) of the Act is in force. Declared Pests may be assigned a control category including: C1 (exclusion), C2 (eradication) and C3 (management). The category may apply to the whole of the State, LGAs, districts, individual properties or even paddocks, and all landholders are obliged to comply with the specific category of control. Categories of control are defined below.

DPIRD Categories for Declared Pests under the BAM Act

Control class code	Description
C1 (Exclusion)	Pests will be assigned to this category if they are not established in Western Australia and control measures are to be taken, including border checks, in order to prevent them entering and establishing in the State.
C2 (Eradication)	Pests will be assigned to this category if they are present in Western Australia in low enough numbers or in sufficiently limited areas that their eradication is still a possibility.
C3 (Management)	Pests will be assigned to this category if they are established in Western Australia but it is feasible, or desirable, to manage them in order to limit their damage. Control measures can prevent a C3 pest from increasing in population size or density or moving from an area in which it is established into an area which currently is free of that pest.

Background information

Environmentally Sensitive Areas

Environmentally Sensitive Areas (ESAs) are declared by the Minister for Environment under Section 51B of the EP Act. The Table below outlines the aspects of areas declared as ESA in the Environmental Protection (Environmentally Sensitive Areas) Notice 2005.

Aspects of ESAs

Aspects of Environmentally Sensitive Areas
A declared World Heritage property as defined in Section 13 of the EPBC Act.
An area that is included on the Register of the National Estate (RNE), because of its natural values, under the <i>Australian Heritage Commission Act 1975</i> of the Commonwealth (the RNE was closed in 2007 and is no longer a statutory list – all references to the RNE were removed from the EPBC Act on 19 February 2012).
A defined wetland and the area within 50 m of the wetland. Defined wetlands include Ramsar wetlands, conservation category wetlands and nationally important wetlands.
The area covered by vegetation within 50 m of rare flora, to the extent to which the vegetation is continuous with the vegetation in which the rare flora is located.
The area covered by a Threatened Ecological Community.
A Bush Forever Site listed in “Bush Forever” Volumes 1 and 2 (2000), published by the Western Australia Planning Commission, except to the extent to which the site is approved to be developed by the Western Australia Planning Commission.
The areas covered by the <i>Environmental Protection (Gnangara Mound Crown Land) Policy 1992</i> .
The areas covered by the <i>Environmental Protection (Western Swamp Tortoise Habitat) Policy 2002</i> .
The areas covered by the lakes to which the <i>Environmental Protection (Swan Coastal Plain Lakes) Policy 1992</i> (EPP Lakes) applies.
Protected wetlands as defined in the <i>Environmental Protection (South West Agricultural Zone Wetlands) Policy 1998</i> .

Reserves and conservation areas

Bush Forever

Bush Forever, which was released in December 2000 and proclaimed in 2010, is a Government initiative aimed to retain and protect regionally significant bushland on the Swan Coastal Plain within the Perth Metropolitan Region. Bush Forever aims to protect more than 51,000 hectares of regionally significant bushland within 287 sites across the metropolitan portion of the Swan Coastal Plain (Government of Western Australia (GoWA) 2000). Bush Forever sites constitute ESAs as declared by a notice under Section 51B of the EP Act.

Department of Biodiversity, Conservation and Attractions managed lands and waters

DBCA manages lands and waters throughout Western Australia to conserve ecosystems and species, and to provide for recreation and appreciation of the natural environment. DBCA managed lands and waters include national parks, conservation parks and reserves, marine parks and reserves, regional

parks, nature reserves, State forest and timber reserves. DBCA managed conservation estate, is vested with the Conservation Commission of Western Australia. Access to, or through, some areas of DBCA managed lands may require a permit or could be restricted due to management activities. Proposed land use changes and development proposals that abut DBCA managed lands will generally be referred to DBCA throughout the assessment process.

Wetlands

Wetlands include not only lakes with open water, but areas of seasonally, intermittently or permanently waterlogged soil. Approximately 25 percent of the Swan Coastal Plain between Moore River and Mandurah is classified as wetland (Hill et al. 1996).

Though extensive in area, not all wetlands retain significant ecological values due to the concentration of urban and agricultural development in the region. Most wetlands have been cleared, filled or developed over, leaving only 20 percent of all the wetlands that were present on the Swan Coastal Plain prior to European settlement. Of these, an estimated 15 percent of the wetland area has retained high ecological values (Hill et al. 1996).

Ramsar Listed Wetlands

The Convention of Wetlands of International Importance was signed in 1971 at the Iranian town of Ramsar. The Convention has since been referred to as the Ramsar Convention. Ramsar Listed wetlands are “sites containing representative, rare or unique wetlands, or wetlands that are important for conserving biological diversity ... because of their ecological, botanical, zoological, limnological or hydrological importance” (DEE 2018b). Once a Ramsar Listed Wetland is designated, the country agrees to manage its conservation and ensure its wise use. Under the Convention, wise use is broadly defined as “maintaining the ecological character of a wetland” (DEE 2018b).

Nationally important wetlands

Wetlands of national significance are listed under the Directory of Important Wetlands in Australia. Nationally important wetlands are wetlands which meet at least one of the following criteria (DEE 2018a):

- It is a good example of a wetland type occurring within a biogeographic region in Australia
- It is a wetland which plays an important ecological or hydrological role in the natural functioning of a major wetland system/complex
- It is a wetland which is important as the habitat for animal taxa at a vulnerable stage in their life cycles, or provides a refuge when adverse conditions such as drought prevail
- The wetland supports one percent or more of the national populations of any native plant or animal taxa
- The wetland supports native plant or animal taxa or communities which are considered endangered or vulnerable at the national level
- The wetland is of outstanding historical or cultural significance

Geomorphic wetlands

Categorisation of wetlands has been conducted by Hill et al. (1996), delineating Swan Coastal Plain wetlands into levels of protection and management categories. Conservation Category Wetlands are wetlands that support high levels of attributes and functions. Resource Enhancement Wetlands are those that have been partly modified but still support substantial functions and attributes. Multiple Use Wetlands are classified as those wetlands with few attributes that still provide important wetland functions. Multiple Use wetlands have few important ecological attributes and functions remaining.

The Geomorphic Wetlands Swan Coastal Plain dataset displays the location, boundary, geomorphic classification (wetland type) and management category of wetlands on the Swan Coastal Plain.

Vegetation extent and status

The National Objectives and Targets for Biodiversity Conservation 2001–2005 (Commonwealth of Australia 2001) recognise that the retention of 30 percent or more of the pre-clearing extent of each ecological community is necessary if Australia’s biological diversity is to be protected. This is the threshold level below which species loss appears to accelerate exponentially and loss below this level should not be permitted. This level of recognition is in keeping with the targets recommended in the review of the National Strategy for the Conservation of Australia’s Biological Diversity (ANZECC 2000).

The extent of remnant native vegetation in WA has been assessed by Shepherd et al. (2002) and the GoWA (2018), based on broadscale vegetation association mapping by Beard (various publications). The GoWA produces Statewide Vegetation Statistics Reports that are used for a number of purposes including conservation planning, land use planning and when assessing development applications. The reports are updated at least every two years.

Within the Swan Coastal Plain, EPA Position Statement No. 9 (EPA 2006) identifies vegetation complexes with 30 percent or less of their pre-clearing extent remaining in a bioregion, or 10 percent or less of their pre-clearing extent remaining in constrained areas (i.e. areas of urban development in cities and major town) on the Swan Coastal Plain, to be critical assets.

Vegetation condition

The vegetation condition can be assessed in accordance with the vegetation condition rating scale for the South West and Interzone Botanical Provinces (EPA 2016a). The scale recognises the intactness of vegetation and consists of six rating levels as outlined below.

Vegetation condition rating scale for the South West and Interzone Botanical Provinces

Condition	South West and Interzone Botanical Provinces description
Pristine	Pristine or nearly so, no obvious signs of damage caused by human activities since European settlement.
Excellent	Vegetation structure intact, disturbance affecting individual species and weeds are non-aggressive species. Damage to trees caused by fire, the presence of non-aggressive weeds and occasional vehicle tracks.
Very Good	Vegetation structure altered, obvious signs of disturbance. Disturbance to vegetation structure caused by repeated fires, the presence of some more aggressive weeds, dieback, logging and grazing.
Good	Vegetation structure significantly altered by very obvious signs of multiple disturbances. Retains basic vegetation structure or ability to regenerate it. Disturbance to vegetation structure caused by very frequent fires, the presence of very aggressive weeds, partial clearing, dieback and grazing.

Condition	South West and Interzone Botanical Provinces description
Degraded	Basic vegetation structure severely impacted by disturbance. Scope for regeneration but not to a state approaching good condition without intensive management. Disturbance to vegetation structure caused by very frequent fires, the presence of very aggressive weeds at high density, partial clearing, dieback and grazing.
Completely Degraded	The structure of vegetation is no longer intact and the area is completely or almost completely without native species. These areas are often described as 'parkland cleared' with the flora comprising weed or crop species with isolated native trees or shrubs.

Conservation codes

Species of significant flora, fauna and communities are protected under both Federal and State Acts. The Federal EPBC Act provides a legal framework to protect and manage nationally important flora and communities. The State WC Act is the primary wildlife conservation legislation in Western Australia. Information on the conservation codes is summarised in the following sections.

Ecological communities

Conservation significant communities

Ecological communities are defined as naturally occurring biological assemblages that occur in a particular type of habitat (English and Blyth 1997). Federally listed Threatened Ecological Communities (TECs) are protected under the EPBC Act. The BC Act provides for the statutory listing of TECs by the Minister. The new legislation also describes statutory processes for preparing recovery plans for TECs, the registration of their critical habitat, and penalties for unauthorised modification of TECs. TECs are ecological communities that have been assessed and assigned to one of four categories related to the status of the threat to the community, i.e. Presumed Totally Destroyed, Critically Endangered, Endangered and Vulnerable.

Possible TECs that do not meet survey criteria are added to the DBCA Priority Ecological Community (PEC) List under Priorities 1, 2 and 3. These are ecological communities that are adequately known; are rare but not threatened, or meet criteria for Near Threatened. PECs that have been recently removed from the threatened list are placed in Priority 4. These ecological communities require regular monitoring. Conservation dependent ecological communities are placed in Priority 5. PECs are not listed under any formal Federal or State legislation, however, may be listed as TECs under the EPBC Act and/ or BC Act.

Conservation codes and definitions for TECs listed under the EPBC Act and/ or BC Act

Categories	Definition
Federal Government Conservation Categories (EPBC Act)	
Critically Endangered (CR)	An ecological community if, at that time, is facing an extremely high risk of extinction in the wild in the immediate future, as determined in accordance with the prescribed criteria (as outlined in Environment Protection and Biodiversity Conservation Regulations 2000)
Endangered (EN)	An ecological community if, at that time: A) is not critically endangered; and B) is facing a very high risk of extinction in the wild in the near future, as determined in accordance with the prescribed criteria (as outlined in Environment Protection and Biodiversity Conservation Regulations 2000)
Vulnerable (VU)	An ecological community if, at that time: A) is not critically endangered or endangered; and B) is facing a high risk of extinction in the wild in the medium-term future, as determined in accordance with the prescribed criteria (as outlined in Environment Protection and Biodiversity Conservation Regulations 2000)
Western Australia Conservation Categories	

Categories	Definition
Presumed Totally Destroyed (PD)	An ecological community that has been adequately searched for but for which no representative occurrences have been located. The community has been found to be totally destroyed or so extensively modified throughout its range that no occurrence of it is likely to recover its species composition and/or structure in the foreseeable future.
Critically Endangered (CR)	An ecological community that has been adequately surveyed and found to have been subject to a major contraction in area and/or that was originally of limited distribution and is facing severe modification or destruction throughout its range in the immediate future, or is already severely degraded throughout its range but capable of being substantially restored or rehabilitated.
Endangered (EN)	An ecological community that has been adequately surveyed and found to have been subject to a major contraction in area and/or was originally of limited distribution and is in danger of significant modification throughout its range or severe modification or destruction over most of its range in the near future.
Vulnerable (VU)	An ecological community that has been adequately surveyed and is found to be declining and/or has declined in distribution and/or condition and whose ultimate security has not yet been assured and/or a community that is still widespread but is believed likely to move into a category of higher threat in the near future if threatening processes continue or begin operating throughout its range.

Conservation categories and definitions for PECS as listed by the DBCA

Category	Description
Priority 1	<p>Poorly known ecological communities.</p> <p>Ecological communities that are known from very few occurrences with a very restricted distribution (generally ≤ 5 occurrences or a total area of ≤ 100 ha). Occurrences are believed to be under threat either due to limited extent, or being on lands under immediate threat (e.g. within agricultural or pastoral lands, urban areas, active mineral leases) or for which current threats exist. May include communities with occurrences on protected lands. Communities may be included if they are comparatively well-known from one or more localities but do not meet adequacy of survey requirements, and/or are not well defined, and appear to be under immediate threat from known threatening processes across their range.</p>
Priority 2	<p>Poorly known ecological communities.</p> <p>Communities that are known from few occurrences with a restricted distribution (generally ≤ 10 occurrences or a total area of ≤ 200 ha). At least some occurrences are not believed to be under immediate threat of destruction or degradation. Communities may be included if they are comparatively well known from one or more localities but do not meet adequacy of survey requirements, and/or are not well defined, and appear to be under threat from known threatening processes.</p>

Category	Description
Priority 3	<p>Poorly known ecological communities.</p> <p>(i) Communities that are known from several to many occurrences, a significant number or area of which are not under threat of habitat destruction or degradation or:</p> <p>(ii) communities known from a few widespread occurrences, which are either large or with significant remaining areas of habitat in which other occurrences may occur, much of it not under imminent threat, or;</p> <p>(iii) communities made up of large, and/or widespread occurrences, that may or may not be represented in the reserve system, but are under threat of modification across much of their range from processes such as grazing by domestic and/or feral stock, and inappropriate fire regimes.</p> <p>Communities may be included if they are comparatively well known from several localities but do not meet adequacy of survey requirements and/or are not well defined, and known threatening processes exist that could affect them.</p>
Priority 4	<p>Ecological communities that are adequately known, rare but not threatened or meet criteria for Near Threatened, or that have been recently removed from the threatened list. These communities require regular monitoring.</p> <p>(i) Rare. Ecological communities known from few occurrences that are considered to have been adequately surveyed, or for which sufficient knowledge is available, and that are considered not currently threatened or in need of special protection, but could be if present circumstances change. These communities are usually represented on conservation lands.</p> <p>(ii) Near Threatened. Ecological communities that are considered to have been adequately surveyed and that do not qualify for Conservation Dependent, but that are close to qualifying for Vulnerable.</p> <p>(iii) Ecological communities that have been removed from the list of threatened communities during the past five years.</p>
Priority 5	<p>Conservation Dependent ecological communities.</p> <p>Ecological communities that are not threatened but are subject to a specific conservation program, the cessation of which would result in the community becoming threatened within five years.</p>

Banksia Woodlands of the Swan Coastal Plain TEC

The Banksia Woodlands of the Swan Coastal Plain was listed in September 2016 as an Endangered TEC under the EPBC Act. The Commonwealth TEC encompasses a number of FCTs, some of which area also listed as State TECs/PECs. The TSSC (2016) provides guidance for determining whether the TEC is present. These criteria are listed below

Diagnostic characteristics and condition thresholds to determine Banksia Woodlands TEC

Diagnosics characteristics / condition thresholds	Criteria
Floristic Community Type	<p>Location and physical environment:</p> <ul style="list-style-type: none"> Occurs in the SCP IBRA bioregion <p>Soil and landform:</p>

Diagnostics characteristics / condition thresholds	Criteria
	<ul style="list-style-type: none"> Typically occurs on well drained, low nutrient soils on sandplain landforms, particularly in deep Bassendean and Spearwood sands and occasionally on Quindalup sands. <p>Structure:</p> <ul style="list-style-type: none"> The community is a low woodland to forest, but may also include shrubland, open woodland or forest under some classification systems. The percentage canopy cover is more than 2% and typically less than 50%. The structure and appearance may also vary due to disturbance history. <p>Composition:</p> <ul style="list-style-type: none"> The canopy is commonly dominated by <i>Banksia attenuata</i> and or <i>B. menziesii</i>. Other <i>Banksia</i> species that dominate include <i>B. prionotes</i> or <i>B. ilicifolia</i>. The patch must include at least one of these diagnostic species.
Vegetation condition ¹ and minimum patch size	<ul style="list-style-type: none"> Pristine – no minimum Excellent – 0.5 ha Very Good – 1 ha Good – 2 ha
Surrounding context	<p>A patch is a discrete and mostly continuous area of ecological community. A patch may include small scale (<30 m) variations, gaps and disturbances, such as tracks, that do not significantly alter the overall functionality of the ecological community. Such breaks are generally included in patch size calculations. The landscape and position of the patch including its position relative to surrounding vegetation also influences how important it is in the broader landscape.</p>

Other significant vegetation

Vegetation may be significant for a range of reasons other than a statutory listing. The EPA (2016b) states that significant vegetation may include vegetation that includes the following:

- Restricted distribution
- Degree of historical impact from threatening processes
- Local endemism in restricted habitats
- Novel combinations of taxa
- A role as a refuge
- A role as a key habitat for Threatened species or large population representing a significant proportion of the local to regional total population of a species
- Being representative of a vegetation unit in 'pristine' condition in a highly cleared landscape, recently discovered range extensions, or isolated outliers of the main range)

¹ As per the Keighery (1994) condition scale presented in Bush Forever (Government of Western Australia 2000).

- Being poorly reserved

This may apply at a number of levels, so the unit may be significant when considered at the fine-scale (intra-locality), intermediate-scale (locality or inter-locality) or broad-scale (local to region).

Flora and fauna

Conservation significant flora and fauna

Species of significant flora are protected under both Federal and State legislation. Any activities that are deemed to have a significant impact on species that are recognised by the EPBC Act, and/or the BC Act can warrant referral to the DEE and/or the EPA.

The Federal conservation level of flora and fauna species and their significance status is assessed under the EPBC Act. The significance levels for fauna used in the EPBC Act are those recommended by the International Union for Conservation of Nature (IUCN).

The EPBC Act also protects land and migratory species that are listed under International Agreements. The list of migratory species established under section 209 of the EPBC Act comprises:

- Migratory species which are native to Australia and are included in the appendices to the Bonn Convention (Convention on the Conservation of Migratory Species of Wild Animals Appendices I and II)
- Migratory species included in annexes established under the Japan-Australia Migratory Bird Agreement (JAMBA) and the China–Australia Migratory Bird Agreement (CAMBA)
- Native, migratory species identified in a list established under, or an instrument made under, an international agreement approved by the Minister, such as the republic of Korea–Australia Migratory Bird Agreement (ROKAMBA)

Under the BC Act aligns with the EPBC Act in that flora and fauna can be Specially Protected, listed as Threatened (Critically Endangered, Endangered or Vulnerable) or Extinct in Western Australia. Threatened species are those are species which have been adequately searched for and are deemed to be, in the wild, either rare, under identifiable threat of extinction, or otherwise in need of special protection, and have been gazetted as such.

Possibly threatened species that do not meet survey criteria, or are otherwise data deficient, are added to the Priority Fauna or Priority Flora Lists under Priorities 1, 2 or 3. These three categories are ranked in order of priority for survey and evaluation of conservation status so that consideration can be given to their declaration as threatened flora or fauna.

Species that are adequately known, are rare but not threatened, or meet criteria for near threatened, or that have been recently removed from the threatened species or other specially protected fauna lists for other than taxonomic reasons, are placed in Priority 4. These species require regular monitoring.

For the purposes of this assessment, all species listed under the EPBC Act, BC Act and DBCA Priority species are considered conservation significant.

Conservation categories and definitions for EPBC Act and BC Act listed flora and fauna species

Conservation category	Definition
Extinct	There is no reasonable doubt that the last member of the species has died.

Conservation category	Definition
Extinct in the Wild	<p>A) A species known only to survive in cultivation, in captivity or as a naturalised population well outside its past range; or</p> <p>B) A species that has not been recorded in its known and/or expected habitat, at appropriate seasons, anywhere in its past range, despite exhaustive surveys over a time frame appropriate to its life cycle and form.</p>
Critically Endangered	A species facing an extremely high risk of extinction in the wild in the immediate future, as determined in accordance with the prescribed criteria (as outlined in Environment Protection and Biodiversity Conservation Regulations 2000).
Endangered	<p>A) A species not critically endangered; and</p> <p>B) A species facing a very high risk of extinction in the wild in the near future, as determined in accordance with the prescribed criteria.</p>
Vulnerable	<p>A) A species not critically endangered or endangered; and</p> <p>B) A species facing a high risk of extinction in the wild in the medium-term, as determined in accordance with the prescribed criteria.</p>
Conservation Dependent	<p>A) The species is the focus of a specific conservation program the cessation of which would result in the species becoming vulnerable, endangered or critically endangered; or</p> <p>B) The following subparagraphs are satisfied:</p> <ul style="list-style-type: none"> (i) the species is a species of fish; (ii) the species is the focus of a plan of management that Section 180 provides for management actions necessary to stop the decline of, and support the recovery of, the species so that its chances of long term survival in nature are maximised; (iii) the plan of management is in force under a law of the Commonwealth or of a State or Territory; (iv) cessation of the plan of management would adversely affect the conservation status of the species.

Conservation codes for DBCA listed Priority flora and fauna

Priority category	Definition
Priority 1	<p>Poorly-known taxa</p> <p>Species that are known from one or a few locations (generally five or less) which are potentially at risk. All occurrences are either: very small; or on lands not managed for conservation, e.g. agricultural or pastoral lands, urban areas, road and rail reserves, gravel reserves and active mineral leases; or otherwise under threat of habitat destruction or degradation. Species may be included if they are comparatively well known from one or more locations but do not meet adequacy of survey requirements and appear to be under immediate threat from known threatening processes. Such species are in urgent need of further survey.</p>
Priority 2	<p>Poorly-known taxa</p> <p>Species that are known from one or a few locations (generally five or less), some of which are on lands managed primarily for nature conservation, e.g. national parks, conservation parks, nature reserves and other lands with secure tenure being managed for conservation. Species may be included if they are comparatively well</p>

Priority category	Definition
	known from one or more locations but do not meet adequacy of survey requirements and appear to be under threat from known threatening processes. Such species are in urgent need of further survey.
Priority 3	<p>Poorly-known taxa</p> <p>Species that are known from several locations, and the species does not appear to be under imminent threat, or from few but widespread locations with either large population size or significant remaining areas of apparently suitable habitat, much of it not under imminent threat. Species may be included if they are comparatively well known from several locations but do not meet adequacy of survey requirements and known threatening processes exist that could affect them. Such species are in need of further survey.</p>
Priority 4	<p>Rare, Near Threatened and other taxa in need of monitoring</p> <p>A. Rare: Taxa that are considered to have been adequately surveyed, or for which sufficient knowledge is available, and that are considered not currently threatened or in need of special protection, but could be if present circumstances change. These taxa are usually represented on conservation lands.</p> <p>B. Near Threatened. Taxa that are considered to have been adequately surveyed and that do not qualify for Conservation Dependent, but that are close to qualifying for Vulnerable.</p> <p>C. Taxa that have been removed from the list of threatened taxa during the past five years for reasons other than taxonomy.</p>

Other significant flora

Flora species, subspecies, varieties, hybrids and ecotypes may be significant for a range of reasons, other than a statutory listing. The EPA (2016b) states that significant flora may include taxa that have:

- A keystone role in a particular habitat for threatened or Priority flora or fauna species, or large populations representing a considerable proportion of the local or regional total population of a species
- Relictual status, being representation of taxonomic or physiognomic groups that no longer occur widely in the broader landscape
- Anomalous features that indicate a potential new discovery
- Being representative of the range of a species (particularly, at the extremes of range, recently discovered range extensions, or isolated outliers of the main range)
- The presence of restricted subspecies, varieties, or naturally occurring hybrids
- Local endemism (a restricted distribution) or association with a restricted habitat type (e.g. surface water or groundwater dependent ecosystems)
- Being poorly reserved

Other significant fauna

Fauna species may be significant for a range of reasons other than those protected by international agreement or treaty, Specially Protected or Priority Fauna. Significant fauna may include short-range endemic species, species that have declining populations or declining distributions, species at the extremes of their range, or isolated outlying populations, or species which may be undescribed (EPA 2010).

Introduced plants (weeds)

Declared Pests

Information on species considered to be Declared Pests is provided under *State Biosecurity and Agriculture Management Act 2007*.

Weeds of National Significance

The spread of weeds across a range of land uses or ecosystems is important in the context of socio-economic and environmental values. The assessment of Weeds of National Significance (WoNS) is based on four major criteria:

- Invasiveness
- Impacts
- Potential for spread
- Socio-economic and environmental values

Australian state and territory governments have identified thirty-two Weeds of National Significance (WoNS); a list of 20 WoNS was endorsed in 1999 and a further 12 were added in 2012.

References

- ANZECC 2000, *Core Environmental Indicators for Reporting on the State of Environment*, ANZECC State of the Environment Reporting Task Force.
- Commonwealth of Australia 2001, *National Targets and Objectives for Biodiversity Conservation 2001–2005*, Canberra, AGPS.
- DEE 2018a, *Criteria for determining nationally important wetlands*, retrieved 2017, from <http://www.environment.gov.au/topics/water/water-our-environment/wetlands/australian-wetlands-database/directory-important>.
- DEE 2018b, *The Ramsar Convention on Wetlands*, retrieved 2017, from <http://www.environment.gov.au/topics/water/water-our-environment/wetlands/ramsar-convention-wetlands>.
- English, V and Blyth, J 1997, *Identifying and Conserving Threatened Ecological Communities in the South West Botanical Province*, Perth, Department of Conservation and Land Management.
- EPA 2006, *Position Statement No. 9: Environmental Offsets*, Perth, Environmental Protection Authority.
- EPA 2010, *Technical Guide – Terrestrial Fauna Surveys*, EPA, Perth, WA.
- EPA 2016a, *Technical Guide – Flora and Vegetation Surveys for Environmental Impact Assessment*, EPA, Perth, WA.
- EPA 2016b, *Environmental Factor Guideline - Flora and Vegetation*, EPA, Perth, WA.
- GoWA 2000, *Bush Forever – Keeping the Bush in the City. Volumes 1 (Policies, Principals and Processes) & 2 (Directory of Bush Forever Sites)*, Perth, Government of Western Australia.
- GoWA 2018, *Statewide Vegetation Statistics incorporating the CAR Reserve Analysis (Full report)*, Current as of December 2017, Perth Western Australia, Department of Environment and Conservation, retrieved January 2019 from <https://www2.landgate.wa.gov.au/web/guest/downloader>.
- Hill, AL, Semeniuk, CA, Semeniuk, V and del Marco, A 1996, *Wetlands of the Swan Coastal Plain. Volume 2: Wetland Mapping, Classification and Evaluation – Wetland Atlas*, Prepared for the Water and Rivers Commission and the Department of Environmental Protection, Perth, Western Australia.
- Shepherd, DP, Beeston, GR & Hopkins, AJM 2002, *Native Vegetation in Western Australia – Extent, Type and Status, Resource Management Technical Report 249*, Perth, Department of Agriculture.
- Threatened Species Scientific Community (TSSC) 2016, *Environmental Protection and Biodiversity Conservation Act 1999 Approved Conservation Advice (incorporating listing advice) for the Banksia Woodlands of the Swan Coastal Plain Ecological Community*, Department of the Environment and Energy, Canberra. Available at: <http://www.environment.gov.au/biodiversity/threatened/communities/pubs/131-conservation-advice.pdf>.

Appendix C – Desktop searches

EPBC Act PMST (5 km)

Naturemap Flora Report (5 km)

Naturemap Fauna Report (5 km)



EPBC Act Protected Matters Report

This report provides general guidance on matters of national environmental significance and other matters protected by the EPBC Act in the area you have selected.

Information on the coverage of this report and qualifications on data supporting this report are contained in the caveat at the end of the report.

Information is available about [Environment Assessments](#) and the EPBC Act including significance guidelines, forms and application process details.

Report created: 25/07/18 15:29:22

[Summary](#)

[Details](#)

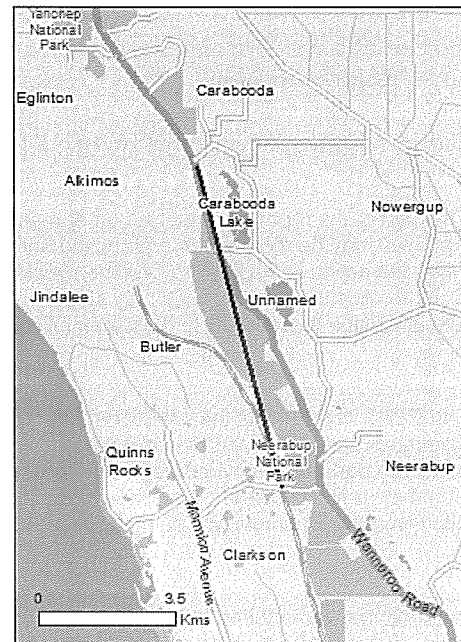
[Matters of NES](#)

[Other Matters Protected by the EPBC Act](#)

[Extra Information](#)

[Caveat](#)

[Acknowledgements](#)



This map may contain data which are
©Commonwealth of Australia
(Geoscience Australia), ©PSMA 2010

[Coordinates](#)
[Buffer: 5.0Km](#)



Summary

Matters of National Environmental Significance

This part of the report summarises the matters of national environmental significance that may occur in, or may relate to, the area you nominated. Further information is available in the detail part of the report, which can be accessed by scrolling or following the links below. If you are proposing to undertake an activity that may have a significant impact on one or more matters of national environmental significance then you should consider the [Administrative Guidelines on Significance](#).

<u>World Heritage Properties:</u>	None
<u>National Heritage Places:</u>	None
<u>Wetlands of International Importance:</u>	None
<u>Great Barrier Reef Marine Park:</u>	None
<u>Commonwealth Marine Area:</u>	None
<u>Listed Threatened Ecological Communities:</u>	3
<u>Listed Threatened Species:</u>	46
<u>Listed Migratory Species:</u>	42

Other Matters Protected by the EPBC Act

This part of the report summarises other matters protected under the Act that may relate to the area you nominated. Approval may be required for a proposed activity that significantly affects the environment on Commonwealth land, when the action is outside the Commonwealth land, or the environment anywhere when the action is taken on Commonwealth land. Approval may also be required for the Commonwealth or Commonwealth agencies proposing to take an action that is likely to have a significant impact on the environment anywhere.

The EPBC Act protects the environment on Commonwealth land, the environment from the actions taken on Commonwealth land, and the environment from actions taken by Commonwealth agencies. As heritage values of a place are part of the 'environment', these aspects of the EPBC Act protect the Commonwealth Heritage values of a Commonwealth Heritage place. Information on the new heritage laws can be found at <http://www.environment.gov.au/heritage>

A [permit](#) may be required for activities in or on a Commonwealth area that may affect a member of a listed threatened species or ecological community, a member of a listed migratory species, whales and other cetaceans, or a member of a listed marine species.

<u>Commonwealth Land:</u>	1
<u>Commonwealth Heritage Places:</u>	None
<u>Listed Marine Species:</u>	66
<u>Whales and Other Cetaceans:</u>	12
<u>Critical Habitats:</u>	None
<u>Commonwealth Reserves Terrestrial:</u>	None
<u>Australian Marine Parks:</u>	None

Extra Information

This part of the report provides information that may also be relevant to the area you have nominated.

<u>State and Territory Reserves:</u>	3
<u>Regional Forest Agreements:</u>	None
<u>Invasive Species:</u>	35
<u>Nationally Important Wetlands:</u>	None
<u>Key Ecological Features (Marine)</u>	None

Details

Matters of National Environmental Significance

Listed Threatened Ecological Communities [Resource Information]

For threatened ecological communities where the distribution is well known, maps are derived from recovery plans, State vegetation maps, remote sensing imagery and other sources. Where threatened ecological community distributions are less well known, existing vegetation maps and point location data are used to produce indicative distribution maps.

Name	Status	Type of Presence
Aquatic Root Mat Community in Caves of the Swan Coastal Plain	Endangered	Community known to occur within area
Banksia Woodlands of the Swan Coastal Plain ecological community	Endangered	Community likely to occur within area
Sedgeland in Holocene dune swales of the southern Swan Coastal Plain	Endangered	Community known to occur within area

Listed Threatened Species [Resource Information]

Name	Status	Type of Presence
Birds		
Anous tenuirostris melanops Australian Lesser Noddy [26000]	Vulnerable	Species or species habitat may occur within area
Botaurus poiciloptilus Australasian Bittern [1001]	Endangered	Species or species habitat likely to occur within area
Calidris canutus Red Knot, Knot [855]	Endangered	Species or species habitat may occur within area
Calidris ferruginea Curlew Sandpiper [856]	Critically Endangered	Species or species habitat likely to occur within area
Calyptorhynchus banksii naso Forest Red-tailed Black-Cockatoo, Karrak [67034]	Vulnerable	Species or species habitat likely to occur within area
Calyptorhynchus latirostris Carnaby's Cockatoo, Short-billed Black-Cockatoo [59523]	Endangered	Species or species habitat known to occur within area
Diomedea amsterdamensis Amsterdam Albatross [64405]	Endangered	Species or species habitat may occur within area
Diomedea epomophora Southern Royal Albatross [89221]	Vulnerable	Foraging, feeding or related behaviour likely to occur within area
Diomedea exulans Wandering Albatross [89223]	Vulnerable	Foraging, feeding or related behaviour likely to occur within area
Diomedea sanfordi Northern Royal Albatross [64456]	Endangered	Foraging, feeding or related behaviour likely

Name	Status	Type of Presence
<u>Leipoa ocellata</u> Malleefowl [934]	Vulnerable	to occur within area Species or species habitat likely to occur within area
<u>Limosa lapponica baueri</u> Bar-tailed Godwit (baueri), Western Alaskan Bar-tailed Godwit [86380]	Vulnerable	Species or species habitat may occur within area
<u>Limosa lapponica menzbieri</u> Northern Siberian Bar-tailed Godwit, Bar-tailed Godwit (menzbieri) [86432]	Critically Endangered	Species or species habitat may occur within area
<u>Macronectes giganteus</u> Southern Giant-Petrel, Southern Giant Petrel [1060]	Endangered	Species or species habitat may occur within area
<u>Macronectes halli</u> Northern Giant Petrel [1061]	Vulnerable	Species or species habitat may occur within area
<u>Numenius madagascariensis</u> Eastern Curlew, Far Eastern Curlew [847]	Critically Endangered	Species or species habitat may occur within area
<u>Pachyptila turtur subantarctica</u> Fairy Prion (southern) [64445]	Vulnerable	Species or species habitat likely to occur within area
<u>Phoebastria fusca</u> Sooty Albatross [1075]	Vulnerable	Species or species habitat may occur within area
<u>Rostratula australis</u> Australian Painted Snipe [77037]	Endangered	Species or species habitat may occur within area
<u>Sternula nereis nereis</u> Australian Fairy Tern [82950]	Vulnerable	Foraging, feeding or related behaviour known to occur within area
<u>Thalassarche cauta cauta</u> Shy Albatross, Tasmanian Shy Albatross [82345]	Vulnerable	Species or species habitat may occur within area
<u>Thalassarche cauta steadi</u> White-capped Albatross [82344]	Vulnerable	Foraging, feeding or related behaviour likely to occur within area
<u>Thalassarche impavida</u> Campbell Albatross, Campbell Black-browed Albatross [64459]	Vulnerable	Species or species habitat may occur within area
<u>Thalassarche melanophris</u> Black-browed Albatross [66472]	Vulnerable	Species or species habitat may occur within area
Mammals		
<u>Balaenoptera musculus</u> Blue Whale [36]	Endangered	Species or species habitat likely to occur within area
<u>Dasyurus geoffroii</u> Chuditch, Western Quoll [330]	Vulnerable	Species or species habitat likely to occur within area
<u>Eubalaena australis</u> Southern Right Whale [40]	Endangered	Breeding known to occur within area
<u>Megaptera novaeangliae</u> Humpback Whale [38]	Vulnerable	Species or species habitat known to occur within area

Name	Status	Type of Presence
<u>Neophoca cinerea</u> Australian Sea-lion, Australian Sea Lion [22]	Vulnerable	Species or species habitat known to occur within area
Plants		
<u>Andersonia gracilis</u> Slender Andersonia [14470]	Endangered	Species or species habitat may occur within area
<u>Anigozanthos viridis subsp. terraspectans</u> Dwarf Green Kangaroo Paw [3435]	Vulnerable	Species or species habitat may occur within area
<u>Diuris micrantha</u> Dwarf Bee-orchid [55082]	Vulnerable	Species or species habitat likely to occur within area
<u>Diuris purdiei</u> Purdie's Donkey-orchid [12950]	Endangered	Species or species habitat may occur within area
<u>Drakaea elastica</u> Glossy-leaved Hammer Orchid, Glossy-leaved Hammer Orchid, Warty Hammer Orchid [16753]	Endangered	Species or species habitat likely to occur within area
<u>Drakaea micrantha</u> Dwarf Hammer-orchid [56755]	Vulnerable	Species or species habitat may occur within area
<u>Eleocharis keigheryi</u> Keighery's Eleocharis [64893]	Vulnerable	Species or species habitat may occur within area
<u>Eucalyptus argutifolia</u> Yanchep Mallee, Wabbling Hill Mallee [24263]	Vulnerable	Species or species habitat likely to occur within area
<u>Lepidosperma rostratum</u> Beaked Lepidosperma [14152]	Endangered	Species or species habitat likely to occur within area
<u>Marianthus paralius</u> [83925]	Endangered	Species or species habitat known to occur within area
Reptiles		
<u>Caretta caretta</u> Loggerhead Turtle [1763]	Endangered	Species or species habitat known to occur within area
<u>Chelonia mydas</u> Green Turtle [1765]	Vulnerable	Species or species habitat known to occur within area
<u>Dermochelys coriacea</u> Leatherback Turtle, Leathery Turtle, Luth [1768]	Endangered	Species or species habitat known to occur within area
<u>Natator depressus</u> Flatback Turtle [59257]	Vulnerable	Species or species habitat known to occur within area
Sharks		
<u>Carcharias taurus (west coast population)</u> Grey Nurse Shark (west coast population) [68752]	Vulnerable	Species or species habitat known to occur within area
<u>Carcharodon carcharias</u> White Shark, Great White Shark [64470]	Vulnerable	Species or species habitat known to occur within area
<u>Rhincodon typus</u> Whale Shark [66680]	Vulnerable	Species or species

Name	Status	Type of Presence
Listed Migratory Species		[Resource Information]
* Species is listed under a different scientific name on the EPBC Act - Threatened Species list.		
Name	Threatened	Type of Presence
<u>Migratory Marine Birds</u>		
<u>Anous stolidus</u>		
Common Noddy [825]		Species or species habitat may occur within area
<u>Apus pacificus</u>		
Fork-tailed Swift [678]		Species or species habitat likely to occur within area
<u>Ardenna carneipes</u>		
Flesh-footed Shearwater, Fleshy-footed Shearwater [82404]		Species or species habitat likely to occur within area
<u>Diomedea amsterdamensis</u>		
Amsterdam Albatross [64405]	Endangered	Species or species habitat may occur within area
<u>Diomedea epomophora</u>		
Southern Royal Albatross [89221]	Vulnerable	Foraging, feeding or related behaviour likely to occur within area
<u>Diomedea exulans</u>		
Wandering Albatross [89223]	Vulnerable	Foraging, feeding or related behaviour likely to occur within area
<u>Diomedea sanfordi</u>		
Northern Royal Albatross [64456]	Endangered	Foraging, feeding or related behaviour likely to occur within area
<u>Hydroprogne caspia</u>		
Caspian Tern [808]		Foraging, feeding or related behaviour known to occur within area
<u>Macronectes giganteus</u>		
Southern Giant-Petrel, Southern Giant Petrel [1060]	Endangered	Species or species habitat may occur within area
<u>Macronectes halli</u>		
Northern Giant Petrel [1061]	Vulnerable	Species or species habitat may occur within area
<u>Onychoprion anaethetus</u>		
Bridled Tern [82845]		Foraging, feeding or related behaviour likely to occur within area
<u>Phoebastria fusca</u>		
Sooty Albatross [1075]	Vulnerable	Species or species habitat may occur within area
<u>Sterna dougallii</u>		
Roseate Tern [817]		Foraging, feeding or related behaviour likely to occur within area
<u>Thalassarche cauta</u>		
Tasmanian Shy Albatross [89224]	Vulnerable*	Species or species habitat may occur within area
<u>Thalassarche impavida</u>		
Campbell Albatross, Campbell Black-browed Albatross [64459]	Vulnerable	Species or species habitat may occur within area
<u>Thalassarche melanophris</u>		
Black-browed Albatross [66472]	Vulnerable	Species or species habitat may occur within area
<u>Thalassarche steadi</u>		
White-capped Albatross [64462]	Vulnerable*	Foraging, feeding or

Name	Threatened	Type of Presence related behaviour likely to occur within area
Migratory Marine Species		
<u>Balaena glacialis australis</u> Southern Right Whale [75529]	Endangered*	Breeding known to occur within area
<u>Balaenoptera edeni</u> Bryde's Whale [35]		Species or species habitat may occur within area
<u>Balaenoptera musculus</u> Blue Whale [36]	Endangered	Species or species habitat likely to occur within area
<u>Caperea marginata</u> Pygmy Right Whale [39]		Species or species habitat may occur within area
<u>Carcharodon carcharias</u> White Shark, Great White Shark [64470]	Vulnerable	Species or species habitat known to occur within area
<u>Caretta caretta</u> Loggerhead Turtle [1763]	Endangered	Species or species habitat known to occur within area
<u>Chelonia mydas</u> Green Turtle [1765]	Vulnerable	Species or species habitat known to occur within area
<u>Derموchelys coriacea</u> Leatherback Turtle, Leathery Turtle, Luth [1768]	Endangered	Species or species habitat known to occur within area
<u>Lamna nasus</u> Porbeagle, Mackerel Shark [83288]		Species or species habitat may occur within area
<u>Manta alfredi</u> Reef Manta Ray, Coastal Manta Ray, Inshore Manta Ray, Prince Alfred's Ray, Resident Manta Ray [84994]		Species or species habitat may occur within area
<u>Manta birostris</u> Giant Manta Ray, Chevron Manta Ray, Pacific Manta Ray, Pelagic Manta Ray, Oceanic Manta Ray [84995]		Species or species habitat may occur within area
<u>Megaptera novaeangliae</u> Humpback Whale [38]	Vulnerable	Species or species habitat known to occur within area
<u>Natator depressus</u> Flatback Turtle [59257]	Vulnerable	Species or species habitat known to occur within area
<u>Orcinus orca</u> Killer Whale, Orca [46]		Species or species habitat may occur within area
<u>Rhincodon typus</u> Whale Shark [66680]	Vulnerable	Species or species habitat may occur within area
Migratory Terrestrial Species		
<u>Motacilla cinerea</u> Grey Wagtail [642]		Species or species habitat may occur within area
Migratory Wetlands Species		
<u>Actitis hypoleucos</u> Common Sandpiper [59309]		Species or species habitat known to occur within area

Name	Threatened	Type of Presence
<u>Calidris acuminata</u> Sharp-tailed Sandpiper [874]		Species or species habitat likely to occur within area
<u>Calidris canutus</u> Red Knot, Knot [855]	Endangered	Species or species habitat may occur within area
<u>Calidris ferruginea</u> Curlew Sandpiper [856]	Critically Endangered	Species or species habitat likely to occur within area
<u>Calidris melanotos</u> Pectoral Sandpiper [858]		Species or species habitat may occur within area
<u>Limosa lapponica</u> Bar-tailed Godwit [844]		Species or species habitat may occur within area
<u>Numenius madagascariensis</u> Eastern Curlew, Far Eastern Curlew [847]	Critically Endangered	Species or species habitat may occur within area
<u>Pandion haliaetus</u> Osprey [952]		Species or species habitat known to occur within area
<u>Tringa nebularia</u> Common Greenshank, Greenshank [832]		Species or species habitat likely to occur within area

Other Matters Protected by the EPBC Act

Commonwealth Land [\[Resource Information \]](#)

The Commonwealth area listed below may indicate the presence of Commonwealth land in this vicinity. Due to the unreliability of the data source, all proposals should be checked as to whether it impacts on a Commonwealth area, before making a definitive decision. Contact the State or Territory government land department for further information.

Name Commonwealth Land -

Listed Marine Species [\[Resource Information \]](#)

* Species is listed under a different scientific name on the EPBC Act - Threatened Species list.

Name	Threatened	Type of Presence
Birds		
<u>Actitis hypoleucos</u> Common Sandpiper [59309]		Species or species habitat known to occur within area
<u>Anous stolidus</u> Common Noddy [825]		Species or species habitat may occur within area
<u>Anous tenuirostris melanops</u> Australian Lesser Noddy [26000]	Vulnerable	Species or species habitat may occur within area
<u>Apus pacificus</u> Fork-tailed Swift [678]		Species or species habitat likely to occur within area
<u>Ardea alba</u> Great Egret, White Egret [59541]		Species or species habitat known to occur within area
<u>Ardea ibis</u> Cattle Egret [59542]		Species or species

Name	Threatened	Type of Presence
<u>Calidris acuminata</u> Sharp-tailed Sandpiper [874]		habitat may occur within area Species or species habitat likely to occur within area
<u>Calidris canutus</u> Red Knot, Knot [855]	Endangered	Species or species habitat may occur within area
<u>Calidris ferruginea</u> Curlew Sandpiper [856]	Critically Endangered	Species or species habitat likely to occur within area
<u>Calidris melanotos</u> Pectoral Sandpiper [858]		Species or species habitat may occur within area
<u>Diomedea amsterdamensis</u> Amsterdam Albatross [64405]	Endangered	Species or species habitat may occur within area
<u>Diomedea epomophora</u> Southern Royal Albatross [89221]	Vulnerable	Foraging, feeding or related behaviour likely to occur within area
<u>Diomedea exulans</u> Wandering Albatross [89223]	Vulnerable	Foraging, feeding or related behaviour likely to occur within area
<u>Diomedea sanfordi</u> Northern Royal Albatross [64456]	Endangered	Foraging, feeding or related behaviour likely to occur within area
<u>Haliaeetus leucogaster</u> White-bellied Sea-Eagle [943]		Species or species habitat likely to occur within area
<u>Larus pacificus</u> Pacific Gull [811]		Foraging, feeding or related behaviour may occur within area
<u>Limosa lapponica</u> Bar-tailed Godwit [844]		Species or species habitat may occur within area
<u>Macronectes giganteus</u> Southern Giant-Petrel, Southern Giant Petrel [1060]	Endangered	Species or species habitat may occur within area
<u>Macronectes halli</u> Northern Giant Petrel [1061]	Vulnerable	Species or species habitat may occur within area
<u>Merops ornatus</u> Rainbow Bee-eater [670]		Species or species habitat may occur within area
<u>Motacilla cinerea</u> Grey Wagtail [642]		Species or species habitat may occur within area
<u>Numenius madagascariensis</u> Eastern Curlew, Far Eastern Curlew [847]	Critically Endangered	Species or species habitat may occur within area
<u>Pachyptila turtur</u> Fairy Prion [1066]		Species or species habitat likely to occur within area
<u>Pandion haliaetus</u> Osprey [952]		Species or species habitat known to occur

Name	Threatened	Type of Presence
<u>Phoebastria fusca</u> Sooty Albatross [1075]	Vulnerable	Species or species habitat may occur within area
<u>Puffinus assimilis</u> Little Shearwater [59363]		Foraging, feeding or related behaviour known to occur within area
<u>Puffinus carneipes</u> Flesh-footed Shearwater, Fleshy-footed Shearwater [1043]		Species or species habitat likely to occur within area
<u>Rostratula benghalensis (sensu lato)</u> Painted Snipe [889]	Endangered*	Species or species habitat may occur within area
<u>Sterna anaethetus</u> Bridled Tern [814]		Foraging, feeding or related behaviour likely to occur within area
<u>Sterna caspia</u> Caspian Tern [59467]		Foraging, feeding or related behaviour known to occur within area
<u>Sterna dougallii</u> Roseate Tern [817]		Foraging, feeding or related behaviour likely to occur within area
<u>Thalassarche cauta</u> Tasmanian Shy Albatross [89224]	Vulnerable*	Species or species habitat may occur within area
<u>Thalassarche impavida</u> Campbell Albatross, Campbell Black-browed Albatross [64459]	Vulnerable	Species or species habitat may occur within area
<u>Thalassarche melanophris</u> Black-browed Albatross [66472]	Vulnerable	Species or species habitat may occur within area
<u>Thalassarche steadi</u> White-capped Albatross [64462]	Vulnerable*	Foraging, feeding or related behaviour likely to occur within area
<u>Thinornis rubricollis</u> Hooded Plover [59510]		Species or species habitat may occur within area
<u>Tringa nebularia</u> Common Greenshank, Greenshank [832]		Species or species habitat likely to occur within area
Fish		
<u>Acentronura australe</u> Southern Pygmy Pipehorse [66185]		Species or species habitat may occur within area
<u>Campichthys galei</u> Gale's Pipefish [66191]		Species or species habitat may occur within area
<u>Choeroichthys suillus</u> Pig-snouted Pipefish [66198]		Species or species habitat may occur within area
<u>Halicampus brocki</u> Brock's Pipefish [66219]		Species or species habitat may occur within area
<u>Hippocampus angustus</u> Western Spiny Seahorse, Narrow-bellied Seahorse [66234]		Species or species habitat may occur within

Name	Threatened	Type of Presence area
<u>Hippocampus breviceps</u> Short-head Seahorse, Short-snouted Seahorse [66235]		Species or species habitat may occur within area
<u>Hippocampus subelongatus</u> West Australian Seahorse [66722]		Species or species habitat may occur within area
<u>Lissocampus fatiloquus</u> Prophet's Pipefish [66250]		Species or species habitat may occur within area
<u>Maroubra perserrata</u> Sawtooth Pipefish [66252]		Species or species habitat may occur within area
<u>Mitotichthys meraculus</u> Western Crested Pipefish [66259]		Species or species habitat may occur within area
<u>Nannocampus subosseus</u> Bonyhead Pipefish, Bony-headed Pipefish [66264]		Species or species habitat may occur within area
<u>Phycodurus eques</u> Leafy Seadragon [66267]		Species or species habitat may occur within area
<u>Phyllopteryx taeniolatus</u> Common Seadragon, Weedy Seadragon [66268]		Species or species habitat may occur within area
<u>Pugnaso curtirostris</u> Pugnose Pipefish, Pug-nosed Pipefish [66269]		Species or species habitat may occur within area
<u>Solegnathus lettiensis</u> Gunther's Pipehorse, Indonesian Pipefish [66273]		Species or species habitat may occur within area
<u>Stigmatopora argus</u> Spotted Pipefish, Gulf Pipefish, Peacock Pipefish [66276]		Species or species habitat may occur within area
<u>Stigmatopora nigra</u> Widebody Pipefish, Wide-bodied Pipefish, Black Pipefish [66277]		Species or species habitat may occur within area
<u>Syngnathoides biaculeatus</u> Double-end Pipehorse, Double-ended Pipehorse, Alligator Pipefish [66279]		Species or species habitat may occur within area
<u>Urocampus carinirostris</u> Hairy Pipefish [66282]		Species or species habitat may occur within area
<u>Vanacampus margaritifer</u> Mother-of-pearl Pipefish [66283]		Species or species habitat may occur within area
Mammals		
<u>Arctocephalus forsteri</u> Long-nosed Fur-seal, New Zealand Fur-seal [20]		Species or species habitat may occur within area
<u>Neophoca cinerea</u> Australian Sea-lion, Australian Sea Lion [22]	Vulnerable	Species or species habitat known to occur within area
Reptiles		
<u>Aipysurus pooleorum</u> Shark Bay Seasnake [66061]		Species or species

Name	Threatened	Type of Presence
<u>Caretta caretta</u> Loggerhead Turtle [1763]	Endangered	habitat may occur within area Species or species habitat known to occur within area
<u>Chelonia mydas</u> Green Turtle [1765]	Vulnerable	Species or species habitat known to occur within area
<u>Derموchelys coriacea</u> Leatherback Turtle, Leathery Turtle, Luth [1768]	Endangered	Species or species habitat known to occur within area
<u>Disteira kingii</u> Spectacled Seasnake [1123]		Species or species habitat may occur within area
<u>Natator depressus</u> Flatback Turtle [59257]	Vulnerable	Species or species habitat known to occur within area
<u>Pelamis platurus</u> Yellow-bellied Seasnake [1091]		Species or species habitat may occur within area

Whales and other Cetaceans		[Resource Information]
Name	Status	Type of Presence
<u>Mammals</u>		
<u>Balaenoptera acutorostrata</u> Minke Whale [33]		Species or species habitat may occur within area
<u>Balaenoptera edeni</u> Bryde's Whale [35]		Species or species habitat may occur within area
<u>Balaenoptera musculus</u> Blue Whale [36]	Endangered	Species or species habitat likely to occur within area
<u>Caperea marginata</u> Pygmy Right Whale [39]		Species or species habitat may occur within area
<u>Delphinus delphis</u> Common Dolphin, Short-beaked Common Dolphin [60]		Species or species habitat may occur within area
<u>Eubalaena australis</u> Southern Right Whale [40]	Endangered	Breeding known to occur within area
<u>Grampus griseus</u> Risso's Dolphin, Grampus [64]		Species or species habitat may occur within area
<u>Megaptera novaeangliae</u> Humpback Whale [38]	Vulnerable	Species or species habitat known to occur within area
<u>Orcinus orca</u> Killer Whale, Orca [46]		Species or species habitat may occur within area
<u>Stenella attenuata</u> Spotted Dolphin, Pantropical Spotted Dolphin [51]		Species or species habitat may occur within area
<u>Tursiops aduncus</u> Indian Ocean Bottlenose Dolphin, Spotted Bottlenose Dolphin [68418]		Species or species habitat likely to occur within area

Name	Status	Type of Presence
<u>Tursiops truncatus s. str.</u> Bottlenose Dolphin [68417]		Species or species habitat may occur within area

Extra Information

State and Territory Reserves [\[Resource Information \]](#)

Name	State
Neerabup	WA
Neerabup	WA
Yanchep	WA

Invasive Species [\[Resource Information \]](#)

Weeds reported here are the 20 species of national significance (WoNS), along with other introduced plants that are considered by the States and Territories to pose a particularly significant threat to biodiversity. The following feral animals are reported: Goat, Red Fox, Cat, Rabbit, Pig, Water Buffalo and Cane Toad. Maps from Landscape Health Project, National Land and Water Resources Audit, 2001.

Name	Status	Type of Presence
Birds		

Acridotheres tristis Common Myna, Indian Myna [387]		Species or species habitat likely to occur within area
Anas platyrhynchos Mallard [974]		Species or species habitat likely to occur within area
Carduelis carduelis European Goldfinch [403]		Species or species habitat likely to occur within area
Columba livia Rock Pigeon, Rock Dove, Domestic Pigeon [803]		Species or species habitat likely to occur within area
Passer domesticus House Sparrow [405]		Species or species habitat likely to occur within area
Passer montanus Eurasian Tree Sparrow [406]		Species or species habitat likely to occur within area
Streptopelia chinensis Spotted Turtle-Dove [780]		Species or species habitat likely to occur within area
Streptopelia senegalensis Laughing Turtle-dove, Laughing Dove [781]		Species or species habitat likely to occur within area
Sturnus vulgaris Common Starling [389]		Species or species habitat likely to occur within area

Mammals

Name	Status	Type of Presence
Bos taurus Domestic Cattle [16]		Species or species habitat likely to occur within area
Canis lupus familiaris Domestic Dog [82654]		Species or species habitat likely to occur within area
Felis catus Cat, House Cat, Domestic Cat [19]		Species or species habitat likely to occur within area
Funambulus pennantii Northern Palm Squirrel, Five-striped Palm Squirrel [129]		Species or species habitat likely to occur within area
Mus musculus House Mouse [120]		Species or species habitat likely to occur within area
Oryctolagus cuniculus Rabbit, European Rabbit [128]		Species or species habitat likely to occur within area
Rattus norvegicus Brown Rat, Norway Rat [83]		Species or species habitat likely to occur within area
Rattus rattus Black Rat, Ship Rat [84]		Species or species habitat likely to occur within area
Vulpes vulpes Red Fox, Fox [18]		Species or species habitat likely to occur within area
Plants		
Asparagus aethiopicus Asparagus Fern, Ground Asparagus, Basket Fern, Sprengi's Fern, Bushy Asparagus, Emerald Asparagus [62425]		Species or species habitat likely to occur within area
Asparagus asparagoides Bridal Creeper, Bridal Veil Creeper, Smilax, Florist's Smilax, Smilax Asparagus [22473]		Species or species habitat likely to occur within area
Brachiaria mutica Para Grass [5879]		Species or species habitat may occur within area
Cenchrus ciliaris Buffel-grass, Black Buffel-grass [20213]		Species or species habitat may occur within area
Chrysanthemoides monilifera Bitou Bush, Boneseed [18983]		Species or species habitat may occur within area
Chrysanthemoides monilifera subsp. monilifera Boneseed [16905]		Species or species habitat likely to occur within area
Genista sp. X Genista monspessulana Broom [67538]		Species or species habitat may occur within area
Lantana camara Lantana, Common Lantana, Kamara Lantana, Large-leaf Lantana, Pink Flowered Lantana, Red Flowered Lantana, Red-Flowered Sage, White Sage, Wild Sage [10892]		Species or species habitat likely to occur within area
Lycium ferocissimum African Boxthorn, Boxthorn [19235]		Species or species habitat likely to occur

Name	Status	Type of Presence
Olea europaea Olive, Common Olive [9160]		within area Species or species habitat may occur within area
Pinus radiata Radiata Pine Monterey Pine, Insignis Pine, Wilding Pine [20780]		Species or species habitat may occur within area
Rubus fruticosus aggregate Blackberry, European Blackberry [68406]		Species or species habitat likely to occur within area
Salix spp. except S.babylonica, S.x calodendron & S.x reichardtii Willows except Weeping Willow, Pussy Willow and Sterile Pussy Willow [68497]		Species or species habitat likely to occur within area
Salvinia molesta Salvinia, Giant Salvinia, Aquarium Watermoss, Kariba Weed [13665]		Species or species habitat likely to occur within area
Tamarix aphylla Athel Pine, Athel Tree, Tamarisk, Athel Tamarisk, Athel Tamarix, Desert Tamarisk, Flowering Cypress, Salt Cedar [16018]		Species or species habitat likely to occur within area
Reptiles		
Hemidactylus frenatus Asian House Gecko [1708]		Species or species habitat likely to occur within area
Ramphotyphlops braminus Flowerpot Blind Snake, Brahminy Blind Snake, Cacing Besi [1258]		Species or species habitat likely to occur within area

Caveat

The information presented in this report has been provided by a range of data sources as acknowledged at the end of the report.

This report is designed to assist in identifying the locations of places which may be relevant in determining obligations under the Environment Protection and Biodiversity Conservation Act 1999. It holds mapped locations of World and National Heritage properties, Wetlands of International and National Importance, Commonwealth and State/Territory reserves, listed threatened, migratory and marine species and listed threatened ecological communities. Mapping of Commonwealth land is not complete at this stage. Maps have been collated from a range of sources at various resolutions.

Not all species listed under the EPBC Act have been mapped (see below) and therefore a report is a general guide only. Where available data supports mapping, the type of presence that can be determined from the data is indicated in general terms. People using this information in making a referral may need to consider the qualifications below and may need to seek and consider other information sources.

For threatened ecological communities where the distribution is well known, maps are derived from recovery plans, State vegetation maps, remote sensing imagery and other sources. Where threatened ecological community distributions are less well known, existing vegetation maps and point location data are used to produce indicative distribution maps.

Threatened, migratory and marine species distributions have been derived through a variety of methods. Where distributions are well known and if time permits, maps are derived using either thematic spatial data (i.e. vegetation, soils, geology, elevation, aspect, terrain, etc) together with point locations and described habitat; or environmental modelling (MAXENT or BIOCLIM habitat modelling) using point locations and environmental data layers.

Where very little information is available for species or large number of maps are required in a short time-frame, maps are derived either from 0.04 or 0.02 decimal degree cells; by an automated process using polygon capture techniques (static two kilometre grid cells, alpha-hull and convex hull); or captured manually or by using topographic features (national park boundaries, islands, etc). In the early stages of the distribution mapping process (1999-early 2000s) distributions were defined by degree blocks, 100K or 250K map sheets to rapidly create distribution maps. More reliable distribution mapping methods are used to update these distributions as time permits.

Only selected species covered by the following provisions of the EPBC Act have been mapped:

- migratory and
- marine

The following species and ecological communities have not been mapped and do not appear in reports produced from this database:

- threatened species listed as extinct or considered as vagrants
- some species and ecological communities that have only recently been listed
- some terrestrial species that overfly the Commonwealth marine area
- migratory species that are very widespread, vagrant, or only occur in small numbers

The following groups have been mapped, but may not cover the complete distribution of the species:

- non-threatened seabirds which have only been mapped for recorded breeding sites
- seals which have only been mapped for breeding sites near the Australian continent

Such breeding sites may be important for the protection of the Commonwealth Marine environment.

Coordinates

-31.608165 115.712394,-31.67022 115.731878,-31.67022 115.731878,-31.67022 115.731878

Acknowledgements

This database has been compiled from a range of data sources. The department acknowledges the following custodians who have contributed valuable data and advice:

- [Office of Environment and Heritage, New South Wales](#)
- [Department of Environment and Primary Industries, Victoria](#)
- [Department of Primary Industries, Parks, Water and Environment, Tasmania](#)
- [Department of Environment, Water and Natural Resources, South Australia](#)
- [Department of Land and Resource Management, Northern Territory](#)
- [Department of Environmental and Heritage Protection, Queensland](#)
- [Department of Parks and Wildlife, Western Australia](#)
- [Environment and Planning Directorate, ACT](#)
- [Birdlife Australia](#)
- [Australian Bird and Bat Banding Scheme](#)
- [Australian National Wildlife Collection](#)
- [Natural history museums of Australia](#)
- [Museum Victoria](#)
- [Australian Museum](#)
- [South Australian Museum](#)
- [Queensland Museum](#)
- [Online Zoological Collections of Australian Museums](#)
- [Queensland Herbarium](#)
- [National Herbarium of NSW](#)
- [Royal Botanic Gardens and National Herbarium of Victoria](#)
- [Tasmanian Herbarium](#)
- [State Herbarium of South Australia](#)
- [Northern Territory Herbarium](#)
- [Western Australian Herbarium](#)
- [Australian National Herbarium, Canberra](#)
- [University of New England](#)
- [Ocean Biogeographic Information System](#)
- [Australian Government, Department of Defence Forestry Corporation, NSW](#)
- [Geoscience Australia](#)
- [CSIRO](#)
- [Australian Tropical Herbarium, Cairns](#)
- [eBird Australia](#)
- [Australian Government – Australian Antarctic Data Centre](#)
- [Museum and Art Gallery of the Northern Territory](#)
- [Australian Government National Environmental Science Program](#)
- [Australian Institute of Marine Science](#)
- [Reef Life Survey Australia](#)
- [American Museum of Natural History](#)
- [Queen Victoria Museum and Art Gallery, Inveresk, Tasmania](#)
- [Tasmanian Museum and Art Gallery, Hobart, Tasmania](#)
- Other groups and individuals

The Department is extremely grateful to the many organisations and individuals who provided expert advice and information on numerous draft distributions.

Please feel free to provide feedback via the [Contact Us](#) page.

NatureMap Species Report

Created By Guest user on 05/12/2018

Current Names Only Yes

Core Datasets Only Yes

Data Source Priority Flora Survey or Swan Coastal Plain Survey or Threatened and Priority Flora

Method Database or WA Herbarium Specimen Database

Vertices 'By Line'

Group By 31° 34' 33" S, 115° 40' 14" E 31° 30' 35" S, 115° 38' 59" E

Family

Family	Species	Records
Acrotylaceae	2	3
Aizoaceae	2	4
Amanitaceae	1	1
Amaranthaceae	4	15
Anacardiaceae	1	1
Anarthriaceae	1	1
Apiaceae	7	20
Araceae	2	2
Araliaceae	7	22
Areschougaceae	1	1
Asparagaceae	20	54
Asphodelaceae	1	3
Asteraceae	54	130
Auriscalpiaceae	1	1
Bangiaceae	1	1
Bonnemaisoniaceae	1	1
Brassicaceae	8	18
Bryaceae	2	6
Campanulaceae	8	19
Caprifoliaceae	1	4
Caryophyllaceae	6	12
Casuarinaceae	3	7
Caulerpaceae	6	7
Celastraceae	4	6
Centrolepidaceae	2	7
Ceramiaceae	6	8
Champiaceae	1	1
Chenopodiaceae	2	9
Cladophoraceae	1	1
Cladostephaceae	1	2
Codiaceae	1	1
Colchicaceae	2	6
Convolvulaceae	1	1
Crassulaceae	5	7
Crepidotaceae	1	1
Cucurbitaceae	1	2
Cyperaceae	36	95
Cystocloniaceae	2	2
Dacrymycetaceae	1	1
Dasyaceae	1	1
Dasyogonaceae	1	5
Delesseriaceae	1	1
Dicranaceae	1	1
Dicranemataceae	1	1
Dictyotaceae	4	10
Dilleniaceae	7	43
Droseraceae	2	8
Ericaceae	19	104
Euphorbiaceae	3	3
Fabaceae	62	169
Funariaceae	1	2
Gentianaceae	2	3
Geraniaceae	5	10
Gigaspermaceae	1	1
Goodeniaceae	16	37
Gracilariaceae	1	1
Graphidaceae	1	1
Gyrostemonaceae	2	5
Haemodoraceae	20	50
Halimedaceae	1	1
Haloragaceae	1	1
Halymeniaceae	1	1
Hemerocallidaceae	6	15
Hymenochaetaceae	1	1
Hymenocladaceae	1	1
Iridaceae	7	17
Juncaceae	1	1
Juncaginaceae	3	6
Kallymeniaceae	1	1
Lamiaceae	7	14
Lauraceae	5	11
Lecanoraceae	1	1
Lentibulariaceae	1	2
Linaceae	1	1
Loganiaceae	2	6

Loranthaceae	1	6
Lythraceae	1	1
Macarthuriaceae	1	1
Malvaceae	5	9
Montiaceae	3	3
Moraceae	1	1
Myrtaceae	39	101
Olacaceae	1	2
Onagraceae	6	12
Orchidaceae	23	43
Orobanchaceae	4	8
Oxalidaceae	2	3
Papaveraceae	4	4
Passifloraceae	1	1
Pezizaceae	4	8
Phallaceae	1	2
Phanerochaetaceae	1	2
Phyllanthaceae	3	12
Physaraceae	2	2
Physciaceae	4	4
Pittosporaceae	1	1
Placynthiaceae	1	1
Plantaginaceae	3	5
Pleosporeae	1	1
Plocamiaceae	2	3
Poaceae	32	49
Polygalaceae	5	8
Polygonaceae	4	13
Polyporaceae	3	5
Pottiaceae	4	5
Primulaceae	1	1
Proteaceae	28	123
Psoraceae	1	1
Pteridaceae	1	1
Racopilaceae	1	1
Ramalinaceae	2	2
Ranunculaceae	3	10
Restionaceae	6	22
Rhamnaceae	7	33
Rhodomelaceae	13	20
Rhodymeniaceae	1	1
Ricciaceae	1	1
Rubiaceae	3	7
Rutaceae	5	8
Santalaceae	4	6
Sapindaceae	1	4
Sargassaceae	5	7
Scrophulariaceae	5	12
Scytosiphonaceae	3	9
Solanaceae	7	24
Solieriaceae	1	1
Strophariaceae	2	2
Styliaceae	19	59
Tamaricaceae	1	1
Teloschistaceae	2	2
Thuidiaceae	1	1
Thymelaeaceae	8	14
Tremellaceae	1	1
Typhaceae	1	1
Ulvaceae	1	1
Urticaceae	1	3
Verbenaceae	2	2
Violaceae	2	13
Vitaceae	1	1
Wrangeliaceae	1	1
Xanthorrhoeaceae	1	5
Zamiaceae	1	1
TOTAL	705	1737

Name ID	Species Name	Naturalised	Conservation Code	Endemic To Query Area
Acrotylaceae				
1.	26665 <i>Clavicleonium ovatum</i>			
2.	26915 <i>Hennedya crispa</i>			
Aizoaceae				
3.	2795 <i>Carpobrotus edulis</i> (Hottentot Fig)	Y		
4.	2798 <i>Carpobrotus virescens</i> (Coastal Pigface, Kolboko, Bain)			
Amanitaceae				
5.	48599 <i>Amanita arenaria</i>			
Amaranthaceae				
6.	2718 <i>Ptilotus drummondii</i> (Narrowleaf Mulla Mulla)			
7.	11260 <i>Ptilotus drummondii</i> var. <i>drummondii</i> (Pussytail)			
8.	2751 <i>Ptilotus polystachyus</i> (Prince of Wales Feather)			
9.	40841 <i>Ptilotus stirlingii</i> subsp. <i>stirlingii</i>			
Anacardiaceae				
10.	11027 <i>Schinus terebinthifolius</i>	Y		
Anarthriaceae				
11.	18049 <i>Lyginia imberbis</i>			
Apiaceae				
12.	12040 <i>Apium prostratum</i> var. <i>prostratum</i> (Sea Celery)			
13.	6214 <i>Centella asiatica</i>			
14.	6218 <i>Daucus glochidiatus</i> (Australian Carrot)			
15.	6219 <i>Eryngium pinnatifidum</i> (Blue Devils)			
16.	6222 <i>Homalosciadium homalocarpum</i>			
17.	18355 <i>Petroselinum crispum</i> (Parsley)	Y		
18.	6289 <i>Xanthosia huegelii</i>			
Araceae				
19.	28342 <i>Landoltia punctata</i> (Thin Duckweed)			
20.	1051 <i>Lemna disperma</i> (Duckweed)			
Araliaceae				
21.	6224 <i>Hydrocotyle blepharocarpa</i>			
22.	6226 <i>Hydrocotyle callicarpa</i> (Small Pennywort)			
23.	6229 <i>Hydrocotyle diantha</i>			
24.	6232 <i>Hydrocotyle hispidula</i>			
25.	11546 <i>Hydrocotyle pilifera</i> var. <i>glabrata</i>			
26.	19041 <i>Trachymene coerulea</i> subsp. <i>coerulea</i>			
27.	6280 <i>Trachymene pilosa</i> (Native Parsnip)			
Areschougiaceae				
28.	26534 <i>Callophycus dorsifer</i>			
Asparagaceae				
29.	1208 <i>Acanthocarpus preissii</i>			
30.	1201 <i>Asparagus officinalis</i> (Asparagus)	Y		
31.	1287 <i>Dichopogon capillipes</i>			
32.	16091 <i>Lachenalia bulbifera</i>	Y		
33.	1308 <i>Laxmannia sessiliflora</i> (Nodding Lily)			
34.	11464 <i>Laxmannia sessiliflora</i> subsp. <i>australis</i>			
35.	1223 <i>Lomandra caespitosa</i> (Tufted Mat Rush)			
36.	1228 <i>Lomandra hermaphrodita</i>			
37.	1231 <i>Lomandra maritima</i>			
38.	14542 <i>Lomandra micrantha</i> subsp. <i>micrantha</i>			
39.	1234 <i>Lomandra nigricans</i>			
40.	1239 <i>Lomandra preissii</i>			
41.	1243 <i>Lomandra sericea</i> (Silky Mat Rush)			
42.	1246 <i>Lomandra suaveolens</i>			
43.	1312 <i>Sowerbaea laxiflora</i> (Purple Tassels)			
44.	1319 <i>Thysanotus arenarius</i>			
45.	1343 <i>Thysanotus patersonii</i>			
46.	46055 <i>Thysanotus</i> sp. Coastal plain (N.H. Brittan 66/63)			
47.	1351 <i>Thysanotus sparteus</i>			
48.	1358 <i>Thysanotus triandrus</i>			
Asphodelaceae				
49.	1368 <i>Trachyandra divaricata</i>	Y		

Name ID	Species Name	Naturalised	Conservation Code	¹ Endemic To Query Area
Asteraceae				
50.	7838 <i>Arctotheca calendula</i> (Cape Weed, African Marigold)	Y		
51.	7840 <i>Arctotis stoechadifolia</i> (White Arctotis, Silver Arctotis)	Y		
52.	7851 <i>Asteridea pulverulenta</i> (Common Bristle Daisy)			
53.	7856 <i>Blennospora drummondii</i>			
54.	7867 <i>Brachyscome bellidioides</i>			
55.	7878 <i>Brachyscome iberidifolia</i>			
56.	7909 <i>Carduus pycnocephalus</i> (Slender Thistle)	Y		
57.	7916 <i>Centaurea melitensis</i> (Maltese Cockspur, Malta Thistle)	Y		
58.	7937 <i>Cirsium vulgare</i> (Spear Thistle, Scotch Thistle)	Y		
59.	20074 <i>Conyza sumatrensis</i>	Y		
60.	7943 <i>Cotula australis</i> (Common Cotula)			
61.	7947 <i>Cotula turbinata</i> (Funnel Weed)	Y		
62.	7961 <i>Dittrichia graveolens</i> (Stinkwort)	Y		
63.	15137 <i>Euchiton sphaericus</i>			
64.	7976 <i>Galinsoga parviflora</i> (Potato Weed)	Y		
65.	16311 <i>Gazania linearis</i>	Y		
66.	12741 <i>Hyalosperma cotula</i>			
67.	8086 <i>Hypochaeris glabra</i> (Smooth Catsear)	Y		
68.	9352 <i>Hypochaeris radicata</i> (Flat Weed, Cats-ear)	Y		
69.	29046 <i>Lactuca serriola</i> forma <i>serriola</i>	Y		
70.	18585 <i>Lagenophora huegelii</i>			
71.	17852 <i>Leptorhynchos scaber</i> (Lanky Buttons)			
72.	16449 <i>Leucophyta brownii</i>			
73.	8105 <i>Millotia myosotidifolia</i>			
74.	8106 <i>Millotia tenuifolia</i> (Soft Millotia)			
75.	8127 <i>Olearia axillaris</i> (Coastal Daisybush)			
76.	8149 <i>Olearia rudis</i> (Rough Daisybush)			
77.	42281 <i>Pithocarpa cordata</i>			
78.	8165 <i>Pithocarpa pulchella</i> (Beautiful Pithocarpa)			
79.	18353 <i>Pithocarpa pulchella</i> var. <i>pulchella</i>			
80.	8175 <i>Podolepis gracilis</i> (Slender Podolepis)			
81.	8177 <i>Podolepis lessonii</i>			
82.	8182 <i>Podotheca angustifolia</i> (Sticky Longheads)			
83.	8183 <i>Podotheca chrysantha</i> (Yellow Podotheca)			
84.	8184 <i>Podotheca gnaphalioides</i> (Golden Long-heads)			
85.	8189 <i>Pseudognaphalium luteoalbum</i> (Jersey Cudweed)			
86.	8195 <i>Quinetia urvillei</i>			
87.	13300 <i>Rhodanthe citrina</i>			
88.	15035 <i>Rhodanthe corymbosa</i>			
89.	20663 <i>Senecio multicaulis</i> subsp. <i>multicaulis</i>			
90.	25884 <i>Senecio pinnatifolius</i> var. <i>latilobus</i>			
91.	8218 <i>Senecio ramosissimus</i> (Auricled Groundsel)			
92.	8220 <i>Senecio vulgaris</i> (Common Groundsel)	Y		
93.	8225 <i>Siloxerus humifusus</i> (Procumbent Siloxerus)			
94.	8231 <i>Sonchus oleraceus</i> (Common Sowthistle)	Y		
95.	8254 <i>Urospermum picroides</i> (False Hawkbit)	Y		
96.	8255 <i>Ursinia anthemoides</i> (Ursinia)	Y		
97.	38388 <i>Ursinia anthemoides</i> subsp. <i>anthemoides</i>	Y		
98.	13331 <i>Waitzia acuminata</i> var. <i>acuminata</i>			
99.	13328 <i>Waitzia nitida</i>			
100.	8282 <i>Waitzia suaveolens</i> (Fragrant Waitzia)			
101.	13333 <i>Waitzia suaveolens</i> var. <i>suaveolens</i>			
102.	8286 <i>Xanthium occidentale</i> (Noogoora Burr)	Y		
103.	44861 <i>Xerochrysum macranthum</i>			
Auriscalpiaceae				
104.	38805 <i>Lentinellus pulvinulus</i>			
Bangiaceae				
105.	27184 <i>Porphyra lucasii</i>			
Bonnemaisoniaceae				
106.	26486 <i>Asparagopsis taxiformis</i>			
Brassicaceae				
107.	3000 <i>Brassica tournefortii</i> (Mediterranean Turnip)	Y		
108.	3016 <i>Heliophila pusilla</i>	Y		
109.	3042 <i>Lepidium pseudotasmanicum</i>		P4	
110.	3044 <i>Lepidium rotundum</i> (Veined Peppergrass)			
111.	3049 <i>Matthiola incana</i> (Common Stock)	Y		
112.	3061 <i>Raphanus raphanistrum</i> (Wild Radish)	Y		

Name ID	Species Name	Naturalised	Conservation Code	¹ Endemic To Query Area
113.	19403 <i>Stenopetalum gracile</i>			
114.	3080 <i>Stenopetalum robustum</i>			
Bryaceae				
115.	32331 <i>Bryum lanatum</i>			
116.	32380 <i>Gemmabryum pachythecum</i>			
Campanulaceae				
117.	37500 <i>Grammatotheca bergiana</i> var. <i>bergiana</i>	Y		
118.	7396 <i>Isotoma hypocrateriformis</i> (Woodbridge Poison)			
119.	9289 <i>Lobelia anceps</i> (Angled Lobelia)			
120.	7402 <i>Lobelia gibbosa</i> (Tall Lobelia)			
121.	7403 <i>Lobelia heterophylla</i> (Wing-seeded Lobelia)			
122.	7408 <i>Lobelia tenuior</i> (Slender Lobelia)			
123.	7384 <i>Wahlenbergia capensis</i> (Cape Bluebell)	Y		
124.	7389 <i>Wahlenbergia preissii</i>			
Caprifoliaceae				
125.	7368 <i>Scabiosa atropurpurea</i> (Purple Pincushion)	Y		
Caryophyllaceae				
126.	2889 <i>Cerastium glomeratum</i> (Mouse Ear Chickweed)	Y		
127.	19825 <i>Petrohragia dubia</i>	Y		
128.	2905 <i>Polycarpon tetraphyllum</i> (Fourleaf Allseed)	Y		
129.	2906 <i>Sagina apetala</i> (Annual Pearlwort)	Y		
130.	2909 <i>Silene gallica</i> (French Catchfly)	Y		
131.	2918 <i>Stellaria media</i> (Chickweed)	Y		
Casuarinaceae				
132.	1728 <i>Allocasuarina fraseriana</i> (Sheoak, Kondil)			
133.	1732 <i>Allocasuarina humilis</i> (Dwarf Sheoak)			
134.	13908 <i>Allocasuarina lehmanniana</i> subsp. <i>lehmanniana</i>			
Caulerpaceae				
135.	44539 <i>Caulerpa cylindracea</i>			
136.	26562 <i>Caulerpa fergusonii</i>			
137.	27382 <i>Caulerpa longifolia</i> forma <i>crispata</i>			
138.	26570 <i>Caulerpa obscura</i>			
139.	26571 <i>Caulerpa papillosa</i>			
140.	46993 <i>Caulerpa taxifolia</i> var. <i>distichophylla</i>			
Celastraceae				
141.	9069 <i>Stackhousia huegelii</i>			
142.	4733 <i>Stackhousia monogyna</i>			
143.	9070 <i>Stackhousia pubescens</i> (Downy Stackhousia)			
144.	4737 <i>Tripterococcus brunonis</i> (Winged Stackhousia)			
Centrolepidaceae				
145.	1121 <i>Centrolepis aristata</i> (Pointed Centrolepis)			
146.	1125 <i>Centrolepis drummondiana</i>			
Ceramiaceae				
147.	26471 <i>Antithamnion armatum</i>			
148.	26475 <i>Antithamnion hanovioides</i>			
149.	26511 <i>Bornetia binderiana</i>			
150.	26599 <i>Ceramium puberulum</i>			
151.	26600 <i>Ceramium pusillum</i>			
152.	26942 <i>Hirsutithallia loricata</i>			
Champiaceae				
153.	26621 <i>Champia zostericola</i>			
Chenopodiaceae				
154.	2463 <i>Atriplex isatidea</i> (Coast Saltbush)			
155.	11341 <i>Rhagodia baccata</i> subsp. <i>baccata</i>			
Cladophoraceae				
156.	26607 <i>Chaetomorpha aerea</i>			
Cladostephaceae				
157.	26662 <i>Cladostephus spongiosus</i>			
Codiaceae				
158.	26672 <i>Codium galeatum</i>			
Colchicaceae				
159.	12770 <i>Burchardia congesta</i>			
160.	1398 <i>Wurmbea monantha</i>			

Name ID	Species Name	Naturalised	Conservation Code	¹ Endemic To Query Area
Convolvulaceae				
161.	11021 <i>Cuscuta planiflora</i>	Y		
Crassulaceae				
162.	3137 <i>Crassula colorata</i> (Dense Stonecrop)			
163.	11709 <i>Crassula colorata</i> var. <i>acuminata</i>			
164.	11563 <i>Crassula colorata</i> var. <i>colorata</i>			
165.	11349 <i>Crassula decumbens</i> var. <i>decumbens</i>			
166.	3140 <i>Crassula glomerata</i>	Y		
Crepidotaceae				
167.	<i>Crepidotus nephrodes</i>			
Cucurbitaceae				
168.	25825 <i>Cucurbita pepo</i>	Y		
Cyperaceae				
169.	740 <i>Baumea arthropphylla</i>			
170.	741 <i>Baumea articulata</i> (Jointed Rush)			
171.	743 <i>Baumea juncea</i> (Bare Twigrush)			
172.	744 <i>Baumea laxa</i>			
173.	745 <i>Baumea preissii</i>			
174.	753 <i>Carex appressa</i> (Tall Sedge)			
175.	755 <i>Carex fascicularis</i> (Tassel Sedge)			
176.	43241 <i>Carex thecata</i>			
177.	760 <i>Caustis dioica</i>			
178.	783 <i>Cyperus congestus</i> (Dense Flat-sedge)	Y		
179.	810 <i>Cyperus rotundus</i> (Nut Grass)	Y		
180.	816 <i>Cyperus tenuiflorus</i> (Scaly Sedge)	Y		
181.	20216 <i>Ficinia nodosa</i> (Knotted Club Rush)			
182.	907 <i>Gahnia trifida</i> (Coast Saw-sedge)			
183.	20200 <i>Isolepis cernua</i> var. <i>setiformis</i>			
184.	917 <i>Isolepis marginata</i> (Coarse Club-rush)			
185.	925 <i>Lepidosperma angustatum</i>			
186.	42742 <i>Lepidosperma calcicola</i>			
187.	932 <i>Lepidosperma effusum</i> (Spreading Sword-sedge)			
188.	933 <i>Lepidosperma gladiatum</i> (Coast Sword-sedge, Kerbin)			
189.	936 <i>Lepidosperma leptostachyum</i>			
190.	937 <i>Lepidosperma longitudinale</i> (Pithy Sword-sedge)			
191.	940 <i>Lepidosperma pubisquamum</i>			
192.	944 <i>Lepidosperma scabrum</i>			
193.	945 <i>Lepidosperma squamatum</i>			
194.	946 <i>Lepidosperma striatum</i>			
195.	955 <i>Mesomelaena pseudostygia</i>			
196.	48356 <i>Schoenoplectus tabernaemontani</i>			
197.	984 <i>Schoenus curvifolius</i>			
198.	992 <i>Schoenus grandiflorus</i> (Large Flowered Bogrush)			
199.	997 <i>Schoenus lanatus</i> (Woolly Bog-rush)			
200.	998 <i>Schoenus latitans</i>			
201.	1002 <i>Schoenus nanus</i> (Tiny Bog Rush)			
202.	1026 <i>Schoenus unispiculatus</i>			
203.	1036 <i>Tetraria octandra</i>			
204.	1038 <i>Tricostularia neesii</i>			
Cystocloniaceae				
205.	35898 <i>Hypnea musciformis</i>			
206.	26971 <i>Hypnea ramentacea</i>			
Dacrymycetaceae				
207.	<i>Calocera guepinioides</i>			
Dasyaceae				
208.	26738 <i>Dasya elongata</i>			
Dasypogonaceae				
209.	19309 <i>Calectasia narragara</i>			
Delesseriaceae				
210.	27149 <i>Platysiphonia mutabilis</i>			
Dicranaceae				
211.	32338 <i>Campylopus introflexus</i>	Y		
Dicranemataceae				
212.	27347 <i>Tylopus obtusatus</i>			

Name ID	Species Name	Naturalised	Conservation Code	¹ Endemic To Query Area
Dictyotaceae				
213.	26767 <i>Dictyopteris plagiogramma</i>			
214.	27043 <i>Lobophora variegata</i>			
215.	27044 <i>Lobospira bicuspidata</i>			
216.	27373 <i>Zonaria turneriana</i>			
Dilleniaceae				
217.	5112 <i>Hibbertia aurea</i>			
218.	5135 <i>Hibbertia hypericoides</i> (Yellow Buttercups)			
219.	45534 <i>Hibbertia hypericoides</i> subsp. <i>hypericoides</i>			
220.	5162 <i>Hibbertia racemosa</i> (Stalked Guinea Flower)			
221.	<i>Hibbertia</i> sp.			
222.	11461 <i>Hibbertia spicata</i> subsp. <i>leptothea</i>		P3	
223.	48381 <i>Hibbertia striata</i>			
Droseraceae				
224.	3095 <i>Drosera erythrorhiza</i> (Red Ink Sundew)			
225.	3118 <i>Drosera pallida</i> (Pale Rainbow)			
Ericaceae				
226.	6295 <i>Acrotriche cordata</i> (Coast Ground Berry)			
227.	6314 <i>Andersonia lehmanniana</i>			
228.	11471 <i>Andersonia lehmanniana</i> subsp. <i>lehmanniana</i>			
229.	6331 <i>Astroloma microcalyx</i> (Native Cranberry)			
230.	6334 <i>Astroloma pallidum</i> (Kick Bush)			
231.	6347 <i>Conostephium minus</i> (Pink-tipped Pearl flower)			
232.	6348 <i>Conostephium pendulum</i> (Pearl Flower)			
233.	6349 <i>Conostephium preissii</i>			
234.	6405 <i>Leucopogon insularis</i>			
235.	40801 <i>Leucopogon maritimus</i>		P1	
236.	6425 <i>Leucopogon oxycedrus</i>			
237.	6427 <i>Leucopogon parviflorus</i> (Coast Beard-heath)			
238.	6434 <i>Leucopogon polymorphus</i>			
239.	6436 <i>Leucopogon propinquus</i>			
240.	6440 <i>Leucopogon racemosus</i>			
241.	19460 <i>Leucopogon</i> sp. <i>Yanchep</i> (M. Hislop 1986)		P3	
242.	40803 <i>Leucopogon squarrosus</i> subsp. <i>squarrosus</i>			
243.	34736 <i>Lysinema pentapetalum</i>			
244.	48297 <i>Styphelia filifolia</i>		P3	
Euphorbiaceae				
245.	4636 <i>Euphorbia paralias</i> (Sea Spurge)	Y		
246.	4638 <i>Euphorbia peplus</i> (Petty Spurge)	Y		
247.	4648 <i>Euphorbia terracina</i> (Geraldton Carnation Weed)	Y		
Fabaceae				
248.	15430 <i>Acacia alata</i> var. <i>tetrantha</i>			
249.	15466 <i>Acacia applanata</i>			
250.	15470 <i>Acacia barbinervis</i> subsp. <i>borealis</i>			
251.	3237 <i>Acacia benthamii</i>		P2	
252.	3262 <i>Acacia cochlearis</i> (Rigid Wattle)			
253.	3282 <i>Acacia cyclops</i> (Coastal Wattle)			
254.	3374 <i>Acacia huegelii</i>			
255.	3409 <i>Acacia lasiocarpa</i> (Panjang)			
256.	11611 <i>Acacia lasiocarpa</i> var. <i>lasiocarpa</i>			
257.	3502 <i>Acacia pulchella</i> (Prickly Moses)			
258.	15481 <i>Acacia pulchella</i> var. <i>glaberrima</i>			
259.	15482 <i>Acacia pulchella</i> var. <i>goadbyi</i>			
260.	3525 <i>Acacia rostellifera</i> (Summer-scented Wattle)			
261.	30032 <i>Acacia saligna</i> subsp. <i>saligna</i>			
262.	3541 <i>Acacia sessilis</i>			
263.	3557 <i>Acacia stenoptera</i> (Narrow Winged Wattle)			
264.	3584 <i>Acacia truncata</i>			
265.	3602 <i>Acacia willdenowiana</i> (Grass Wattle)			
266.	3604 <i>Acacia xanthina</i> (White-stemmed Wattle)			
267.	3692 <i>Aotus procumbens</i>			
268.	3710 <i>Bossiaea eriocarpa</i> (Common Brown Pea)			
269.	3805 <i>Daviesia decurrens</i> (Prickly Bitter-pea)			
270.	19747 <i>Daviesia decurrens</i> subsp. <i>decurrens</i>			
271.	18560 <i>Daviesia divaricata</i> subsp. <i>divaricata</i>			
272.	16585 <i>Daviesia nudiflora</i> subsp. <i>nudiflora</i>			
273.	3832 <i>Daviesia physodes</i>			

Name ID	Species Name	Naturalised	Conservation Code	¹ Endemic To Query Area
274.	3833 <i>Daviesia podophylla</i>			
275.	20483 <i>Gastrolobium linearifolium</i>			
276.	20482 <i>Gastrolobium nervosum</i>			
277.	3945 <i>Gompholobium aristatum</i>			
278.	10909 <i>Gompholobium confertum</i>			
279.	3950 <i>Gompholobium knightianum</i>			
280.	19295 <i>Gompholobium pungens</i>			
281.	11083 <i>Gompholobium scabrum</i>			
282.	3957 <i>Gompholobium tomentosum</i> (Hairy Yellow Pea)			
283.	3961 <i>Hardenbergia comptoniana</i> (Native Wisteria)			
284.	3966 <i>Hovea pungens</i> (Devil's Pins, Puyenak)			
285.	3968 <i>Hovea trisperma</i> (Common Hovea)			
286.	12859 <i>Hovea trisperma</i> var. <i>trisperma</i>			
287.	3992 <i>Isotropis cuneifolia</i> (Granny Bonnets)			
288.	19700 <i>Isotropis cuneifolia</i> subsp. <i>cuneifolia</i>			
289.	14783 <i>Jacksonia calcicola</i>			
290.	4012 <i>Jacksonia furcellata</i> (Grey Stinkwood)			
291.	4029 <i>Jacksonia sternbergiana</i> (Stinkwood, Kapur)			
292.	4042 <i>Kennedia nigricans</i> (Black Kennedia)			
293.	4044 <i>Kennedia prostrata</i> (Scarlet Runner)			
294.	4066 <i>Lupinus cosentinii</i>	Y		
295.	4085 <i>Melilotus indicus</i>	Y		
296.	4155 <i>Psoralea pinnata</i> (African Scurfpea)	Y		
297.	4181 <i>Pultenaea reticulata</i>			
298.	19183 <i>Retama raetam</i>	Y		
299.	20348 <i>Sphaerolobium calcicola</i>		P3	
300.	17551 <i>Sphaerolobium drummondii</i>			
301.	4207 <i>Sphaerolobium medium</i>			
302.	4256 <i>Templetonia retusa</i> (Cockies Tongues)			
303.	4291 <i>Trifolium arvense</i> (Hare's Foot Clover)	Y		
304.	17542 <i>Trifolium arvense</i> var. <i>arvense</i>	Y		
305.	4292 <i>Trifolium campestre</i> (Hop Clover)	Y		
306.	4309 <i>Trifolium scabrum</i> (Rough Clover)	Y		
307.	4310 <i>Trifolium spumosum</i> (Bladder Clover)	Y		
308.	11474 <i>Vicia sativa</i> subsp. <i>nigra</i>	Y		
309.	4325 <i>Viminaria juncea</i> (Swishbush, Koweda)			
Funariaceae				
310.	32370 <i>Funaria hygrometrica</i>			
Gentianaceae				
311.	17800 <i>Centaurium pulchellum</i>	Y		
312.	6542 <i>Centaurium tenuiflorum</i>	Y		
Geraniaceae				
313.	4333 <i>Erodium cicutarium</i> (Common Storksbill)	Y		
314.	4336 <i>Erodium moschatum</i> (Musky Crowfoot)	Y		
315.	4339 <i>Geranium molle</i> (Dove's Foot Cranesbill)	Y		
316.	4343 <i>Pelargonium capitatum</i> (Rose Pelargonium)	Y		
317.	4346 <i>Pelargonium littorale</i>			
Gigaspermaceae				
318.	32384 <i>Gigaspermum repens</i>			
Goodeniaceae				
319.	7451 <i>Dampiera lavandulacea</i>			
320.	7454 <i>Dampiera linearis</i> (Common Dampiera)			
321.	7568 <i>Lechenaultia biloba</i> (Blue Leschenaultia)			
322.	7574 <i>Lechenaultia floribunda</i> (Free-flowering Leschenaultia)			
323.	7577 <i>Lechenaultia hirsuta</i> (Hairy Leschenaultia)			
324.	7580 <i>Lechenaultia linarioides</i> (Yellow Leschenaultia)			
325.	7586 <i>Lechenaultia stenosepala</i> (Narrow-sepaled Leschenaultia)			
326.	7603 <i>Scaevola canescens</i> (Grey Scaevola)			
327.	7606 <i>Scaevola crassifolia</i> (Thick-leaved Fan-flower)			
328.	7614 <i>Scaevola globulifera</i>			
329.	7626 <i>Scaevola nitida</i> (Shining Fanflower)			
330.	13181 <i>Scaevola repens</i> var. <i>angustifolia</i>			
331.	13182 <i>Scaevola repens</i> var. <i>repens</i>			
332.	7647 <i>Scaevola thesioides</i>			
333.	13152 <i>Scaevola thesioides</i> subsp. <i>thesioides</i>			
334.	7666 <i>Verreauxia reinwardtii</i> (Common Verreauxia)			
Gracilariaceae				

Name ID	Species Name	Naturalised	Conservation Code	¹ Endemic To Query Area
335.	26876 <i>Gracilaria verrucosa</i>			
Graphidaceae				
336.	44221 <i>Xalocoa ocellata</i>			
Gyrostemonaceae				
337.	2784 <i>Gyrostemon ramulosus</i> (Corkybark)			
338.	2791 <i>Tersonia cyathiflora</i> (Button Creeper)			
Haemodoraceae				
339.	1409 <i>Anigozanthos humilis</i> (Catspaw)			
340.	11434 <i>Anigozanthos humilis</i> subsp. <i>humilis</i>			
341.	11261 <i>Anigozanthos manglesii</i> subsp. <i>manglesii</i>			
342.	1418 <i>Conostylis aculeata</i> (Prickly Conostylis)			
343.	11826 <i>Conostylis aculeata</i> subsp. <i>aculeata</i>			
344.	11552 <i>Conostylis aculeata</i> subsp. <i>bromelioides</i>			
345.	11513 <i>Conostylis aculeata</i> subsp. <i>cygnorum</i>			
346.	1425 <i>Conostylis bracteata</i>		P3	
347.	1427 <i>Conostylis candicans</i> (Grey Cottonhead)			
348.	12027 <i>Conostylis candicans</i> subsp. <i>calcicola</i>			
349.	11438 <i>Conostylis candicans</i> subsp. <i>candicans</i>			
350.	11388 <i>Conostylis pauciflora</i> subsp. <i>euryrhipis</i>		P4	
351.	11657 <i>Conostylis pauciflora</i> subsp. <i>pauciflora</i>		P4	
352.	1454 <i>Conostylis setigera</i> (Bristly Cottonhead)			
353.	11597 <i>Conostylis setigera</i> subsp. <i>setigera</i>			
354.	11870 <i>Conostylis teretifolia</i> subsp. <i>teretifolia</i>			
355.	1468 <i>Haemodorum laxum</i>			
356.	1470 <i>Haemodorum paniculatum</i> (Mardja)			
357.	1475 <i>Haemodorum spicatum</i> (Mardja)			
358.	1478 <i>Phlebocarya ciliata</i>			
Halimedaceae				
359.	47213 <i>Halimeda versatilis</i>			
Haloragaceae				
360.	34676 <i>Meionectes brownii</i> (Swamp Raspwort)			
Hallymeniaceae				
361.	26850 <i>Gelinaria ulvoidea</i>			
Hemerocallidaceae				
362.	1264 <i>Arnocrinum preissii</i>			
363.	11283 <i>Corynotheca micrantha</i> var. <i>micrantha</i>			
364.	1259 <i>Dianella revoluta</i> (Blueberry Lily)			
365.	11636 <i>Dianella revoluta</i> var. <i>divaricata</i>			
366.	1260 <i>Stypandra glauca</i> (Blind Grass)			
367.	1361 <i>Tricoryne elatior</i> (Yellow Autumn Lily)			
Hymenochaetaceae				
368.	<i>Coltricia cinnamomea</i>			
Hymenocladaceae				
369.	26960 <i>Hymenocladia chondricola</i>			
Iridaceae				
370.	1515 <i>Ferraria crispa</i> (Black Flag)	Y		
371.	1520 <i>Gladiolus caryophyllaceus</i> (Wild Gladiolus)	Y		
372.	19179 <i>Moraea flaccida</i> (One-leaf Cape Tulip)	Y		
373.	11749 <i>Orthrosanthus laxus</i> var. <i>laxus</i> (Morning Iris)			
374.	30472 <i>Patersonia occidentalis</i> var. <i>occidentalis</i>			
375.	1552 <i>Patersonia rudis</i> (Hairy Flag)			
376.	11544 <i>Romulea rosea</i> var. <i>australis</i> (Guildford Grass)	Y		
Juncaceae				
377.	1188 <i>Juncus pallidus</i> (Pale Rush)			
Juncaginaceae				
378.	33276 <i>Triglochin isingiana</i>			
379.	18587 <i>Triglochin nana</i>			
380.	152 <i>Triglochin trichophora</i>			
Kallymeniaceae				
381.	48423 <i>Stauromenia lacerata</i>			
Lamiaceae				
382.	16933 <i>Hemiandra glabra</i>			
383.	6839 <i>Hemiandra pungens</i> (Snakebush)			

Name ID	Species Name	Naturalised	Conservation Code	¹ Endemic To Query Area
384.	38320 <i>Hemiantra</i> sp. <i>Jurien</i> (B.J. Conn & M.E. Tozer BJC 3885)			
385.	6871 <i>Hemigenia sericea</i> (<i>Silky Hemigenia</i>)			
386.	41020 <i>Hemiphora bartlingii</i> (<i>Woolly Dragon</i>)			
387.	15994 <i>Mentha x piperita</i> var. <i>citrata</i>	Y		
388.	6939 <i>Westringia dampieri</i>			
Lauraceae				
389.	2951 <i>Cassytha flava</i> (<i>Dodder Laurel</i>)			
390.	11501 <i>Cassytha glabella</i> forma <i>casuarinae</i>			
391.	2956 <i>Cassytha pomiformis</i> (<i>Dodder Laurel</i>)			
392.	2957 <i>Cassytha racemosa</i> (<i>Dodder Laurel</i>)			
393.	11799 <i>Cassytha racemosa</i> forma <i>racemosa</i>			
Lecanoraceae				
394.	27815 <i>Lecanora sphaerospora</i>			
Lentibulariaceae				
395.	7125 <i>Utricularia australis</i>			
Linaceae				
396.	4362 <i>Linum marginale</i> (<i>Wild Flax</i>)			
Loganiaceae				
397.	6515 <i>Logania vaginalis</i> (<i>White Spray</i>)			
398.	16177 <i>Phyllangium paradoxum</i>			
Loranthaceae				
399.	2401 <i>Nuytsia floribunda</i> (<i>Christmas Tree, Mudja</i>)			
Lythraceae				
400.	5281 <i>Lythrum hyssopifolia</i> (<i>Lesser Loosestrife</i>)	Y		
Macarthuraceae				
401.	2838 <i>Macarthuria apetala</i>			
Malvaceae				
402.	4906 <i>Alyogyne huegelii</i> (<i>Lilac Hibiscus</i>)			
403.	5011 <i>Guichenotia ledifolia</i>			
404.	5038 <i>Lasiopetalum membranaceum</i>		P3	
405.	5077 <i>Thomasia cognata</i>			
406.	5105 <i>Thomasia triphylla</i>			
Montiaceae				
407.	2845 <i>Calandrinia brevipedata</i> (<i>Short-stalked Purslane</i>)			
408.	2856 <i>Calandrinia liniflora</i> (<i>Parakeelya</i>)			
409.	40827 <i>Calandrinia tholiformis</i>			
Moraceae				
410.	1747 <i>Ficus carica</i> (<i>Common Fig</i>)	Y		
Myrtaceae				
411.	20283 <i>Astartea scoparia</i> (<i>Common Astartea</i>)			
412.	5382 <i>Beaufortia elegans</i> (<i>Elegant Beaufortia</i>)			
413.	5426 <i>Calothamnus quadrifidus</i> (<i>One-sided Bottlebrush, Kwowdjard</i>)			
414.	35816 <i>Calothamnus quadrifidus</i> subsp. <i>quadrifidus</i>			
415.	5429 <i>Calothamnus sanguineus</i> (<i>Silky-leaved Blood flower, Pindak</i>)			
416.	5439 <i>Calytrix angulata</i> (<i>Yellow Starflower</i>)			
417.	5458 <i>Calytrix flavescens</i> (<i>Summer Starflower</i>)			
418.	5460 <i>Calytrix fraseri</i> (<i>Pink Summer Calytrix</i>)			
419.	5476 <i>Calytrix sapphirina</i>			
420.	5479 <i>Calytrix strigosa</i>			
421.	5498 <i>Chamelaucium uncinatum</i> (<i>Geraldton Wax</i>)			
422.	17104 <i>Corymbia calophylla</i> (<i>Marri</i>)			
423.	13949 <i>Eremaea asterocarpa</i>			
424.	13950 <i>Eremaea asterocarpa</i> subsp. <i>asterocarpa</i>			
425.	5540 <i>Eremaea fimbriata</i>			
426.	5541 <i>Eremaea pauciflora</i>			
427.	14104 <i>Eremaea pauciflora</i> var. <i>pauciflora</i>			
428.	13091 <i>Eucalyptus argutifolia</i> (<i>Wabling Hill Mallee</i>)		T	
429.	5615 <i>Eucalyptus decipiens</i> (<i>Limestone Marlock, Moit</i>)			
430.	5649 <i>Eucalyptus foecunda</i> (<i>Narrow-leaved Red Mallee</i>)			
431.	5659 <i>Eucalyptus gomphocephala</i> (<i>Tuart, Duart</i>)			
432.	5708 <i>Eucalyptus marginata</i> (<i>Jarrah, Djara</i>)			
433.	13547 <i>Eucalyptus marginata</i> subsp. <i>marginata</i> (<i>Jarrah</i>)			
434.	13541 <i>Eucalyptus petrensis</i>			
435.	13511 <i>Eucalyptus rudis</i> subsp. <i>rudis</i>			

Name ID	Species Name	Naturalised	Conservation Code	¹ Endemic To Query Area
436.	5790 <i>Eucalyptus todtiana</i> (Coastal Blackbutt)			
437.	15498 <i>Kunzea glabrescens</i> (Spearwood)			
438.	5850 <i>Leptospermum laevigatum</i> (Coast Teatree)	Y		
439.	5857 <i>Leptospermum spinescens</i>			
440.	5887 <i>Melaleuca cardiophylla</i> (Tangling Melaleuca)			
441.	13271 <i>Melaleuca huegelii</i> subsp. <i>huegelii</i>			
442.	18394 <i>Melaleuca parviceps</i>			
443.	5959 <i>Melaleuca raphiophylla</i> (Swamp Paperbark)			
444.	18598 <i>Melaleuca systema</i>			
445.	5983 <i>Melaleuca trichophylla</i>			
446.	6012 <i>Regelia ciliata</i>			
447.	6033 <i>Scholtzia involucrata</i> (Spiked Scholtzia)			
448.	12411 <i>Verticordia densiflora</i> var. <i>cespitosa</i>			
449.	6101 <i>Verticordia nitens</i> (Morrison Featherflower, Kodjeningara)			
Olacaceae				
450.	2365 <i>Olax benthamiana</i>			
Onagraceae				
451.	11570 <i>Epilobium billardioreanum</i> subsp. <i>billardioreanum</i> (Smooth Willow Herb)			
452.	11992 <i>Epilobium billardioreanum</i> subsp. <i>intermedium</i>			
453.	6132 <i>Epilobium ciliatum</i>	Y		
454.	6133 <i>Epilobium hirtigerum</i> (Hairy Willow Herb)			
455.	14289 <i>Epilobium tetragonum</i> subsp. <i>tetragonum</i>	Y		
456.	6139 <i>Oenothera glazioviana</i> (Evening Primrose)	Y		
Orchidaceae				
457.	1592 <i>Caladenia flava</i> (Cowslip Orchid)			
458.	15348 <i>Caladenia flava</i> subsp. <i>flava</i>			
459.	15352 <i>Caladenia georgei</i>			
460.	1599 <i>Caladenia latifolia</i> (Pink Fairy Orchid)			
461.	15377 <i>Caladenia reptans</i> subsp. <i>reptans</i>			
462.	15114 <i>Cyanicula gemmata</i>			
463.	1635 <i>Diuris longifolia</i> (Common Donkey Orchid)			
464.	1643 <i>Elythranthera brunonis</i> (Purple Enamel Orchid)			
465.	1644 <i>Elythranthera emarginata</i> (Pink Enamel Orchid)			
466.	1646 <i>Eriochilus dilatatus</i> (White Bunny Orchid)			
467.	15418 <i>Leptoceras menziesii</i>			
468.	34158 <i>Microtis alboboviridis</i>			
469.	20460 <i>Pheladenia deformis</i>			
470.	15425 <i>Prasophyllum calcicola</i>			
471.	1680 <i>Prasophyllum parvifolium</i> (Autumn Leek Orchid)			
472.	<i>Pterostylis</i> aff. <i>nana</i>			
473.	15426 <i>Pterostylis aspera</i>			
474.	1693 <i>Pterostylis recurva</i> (Jug Orchid)			
475.	<i>Pterostylis</i> sp.			
476.	18658 <i>Pterostylis</i> sp. <i>short sepals</i> (W. Jackson BJ259)			
477.	1698 <i>Pterostylis vittata</i> (Banded Greenhood)			
478.	1708 <i>Thelymitra fuscolutea</i> (Chestnut Sun Orchid)			
479.	<i>Urochilus vittatus</i>			Y
Orobanchaceae				
480.	15037 <i>Bartsia trixago</i>	Y		
481.	7122 <i>Orobanche minor</i> (Lesser Broomrape)	Y		
482.	7089 <i>Parentucellia latifolia</i> (Common Bartsia)	Y		
483.	7090 <i>Parentucellia viscosa</i> (Sticky Bartsia)	Y		
Oxalidaceae				
484.	30375 <i>Oxalis exilis</i>			
485.	4356 <i>Oxalis pes-caprae</i> (Soursob)	Y		
Papaveraceae				
486.	2969 <i>Fumaria capreolata</i> (Whiteflower Fumitory)	Y		
487.	2971 <i>Fumaria muralis</i> (Wall Fumitory)	Y		
488.	31532 <i>Fumaria muralis</i> subsp. <i>muralis</i>	Y		
489.	2967 <i>Romneya coulteri</i> (California Tree Poppy)	Y		
Passifloraceae				
490.	5225 <i>Passiflora filamentosa</i>	Y		
Pezizaceae				
491.	<i>Peziza austrogeaster</i>			
492.	<i>Peziza badia</i>			
493.	<i>Peziza</i> sp.			

Name ID	Species Name	Naturalised	Conservation Code	¹ Endemic To Query Area
494.	38819 <i>Peziza vesiculosa</i>			
Phallaceae				
495.	44926 <i>Ileodictyon gracile</i>			
Phanerochaetaceae				
496.	44729 <i>Porostereum crassum</i>			
Phyllanthaceae				
497.	4675 <i>Phyllanthus calycinus</i> (False Boronia)			
498.	4688 <i>Poranthera drummondii</i>			
499.	4691 <i>Poranthera microphylla</i> (Small Poranthera)			
Physaraceae				
500.	39061 <i>Physarum bitectum</i>			
501.	39063 <i>Physarum cinereum</i>			
Physciaceae				
502.	42104 <i>Buellia albula</i>			
503.	27598 <i>Buellia dissa</i>			
504.	27602 <i>Buellia georgei</i>			
505.	28049 <i>Rinodina bischoffii</i>		P2	Y
Pittosporaceae				
506.	25788 <i>Billardiera fraseri</i> (Elegant Pronaya)			
Placynthiaceae				
507.	27986 <i>Placynthium nigrum</i>		P3	
Plantaginaceae				
508.	7303 <i>Plantago lanceolata</i> (Ribwort Plantain)	Y		
509.	7109 <i>Veronica calycina</i> (Cup Speedwell)			
510.	7110 <i>Veronica distans</i>			
Pleosporaceae				
511.	<i>Alternaria alternata</i>			Y
Plocamiaceae				
512.	27155 <i>Plocamium cartilagineum</i>			
513.	27156 <i>Plocamium mertensii</i>			
Poaceae				
514.	184 <i>Aira caryophyllea</i> (Silvery Hairgrass)	Y		
515.	185 <i>Aira cupaniana</i> (Silvery Hairgrass)	Y		
516.	226 <i>Arundo donax</i> (Giant Reed)	Y		
517.	17234 <i>Austrostipa compressa</i>			
518.	17240 <i>Austrostipa flavescens</i>			
519.	244 <i>Briza maxima</i> (Blowfly Grass)	Y		
520.	245 <i>Briza minor</i> (Shivery Grass)	Y		
521.	247 <i>Bromus arenarius</i> (Sand Brome)			
522.	249 <i>Bromus diandrus</i> (Great Brome)	Y		
523.	250 <i>Bromus hordeaceus</i> (Soft Brome)	Y		
524.	253 <i>Bromus rubens</i> (Red Brome)	Y		
525.	13685 <i>Catapodium rigidum</i> (Rigid Fescue)	Y		
526.	283 <i>Cynodon dactylon</i> (Couch)	Y		
527.	347 <i>Ehrharta calycina</i> (Perennial Veldt Grass)	Y		
528.	376 <i>Eragrostis curvula</i> (African Lovegrass)	Y		
529.	444 <i>Holcus lanatus</i> (Yorkshire Fog)	Y		
530.	20019 <i>Lachnagrostis filiformis</i>			
531.	467 <i>Lagurus ovatus</i> (Hare's Tail Grass)	Y		
532.	476 <i>Lolium perenne</i> (Perennial Ryegrass)	Y		
533.	478 <i>Lolium rigidum</i> (Wimmera Ryegrass)	Y		
534.	485 <i>Microlaena stipoides</i> (Weeping Grass)			
535.	532 <i>Paspalum urvillei</i> (Vasey Grass)	Y		
536.	573 <i>Poa drummondiana</i> (Knotted Poa)			
537.	578 <i>Poa porphyroclados</i>			
538.	582 <i>Polypogon monspeliensis</i> (Annual Beardgrass)	Y		
539.	10970 <i>Rostraria cristata</i>	Y		
540.	40426 <i>Rytidosperma occidentale</i>			
541.	625 <i>Spinifex longifolius</i> (Beach Spinifex)			
542.	708 <i>Triticum aestivum</i> (Wheat)	Y		
543.	716 <i>Urochloa mutica</i>	Y		
544.	724 <i>Vulpia myuros</i> (Rat's Tail Fescue)	Y		
545.	33101 <i>Vulpia myuros forma myuros</i>	Y		
Polygalaceae				

Name ID	Species Name	Naturalised	Conservation Code	¹ Endemic To Query Area
546.	4550 <i>Comesperma calymega</i> (Blue-spike Milkwort)			
547.	4552 <i>Comesperma confertum</i>			
548.	4554 <i>Comesperma flavum</i>			
549.	4555 <i>Comesperma integerrimum</i>			
550.	4564 <i>Comesperma virgatum</i> (Milkwort)			
Polygonaceae				
551.	2415 <i>Muehlenbeckia polybotrya</i>			
552.	13911 <i>Persicaria decipiens</i>			
553.	2433 <i>Rumex crispus</i> (Curled Dock)	Y		
554.	2440 <i>Rumex pulcher</i> (Fiddle Dock)	Y		
Polyporaceae				
555.	<i>Hexagonia vesparia</i>			
556.	<i>Phaeotrametes decipiens</i>			
557.	38835 <i>Royoporus badius</i>			
Pottiaceae				
558.	32315 <i>Barbula calycina</i>			
559.	32345 <i>Didymodon australasiae</i>			
560.	32346 <i>Didymodon torquatus</i>			
561.	32450 <i>Trichostomum eckelianum</i>			
Primulaceae				
562.	6483 <i>Samolus junceus</i>			
Proteaceae				
563.	1800 <i>Banksia attenuata</i> (Slender Banksia, Piara)			
564.	32580 <i>Banksia dallanneyi</i> var. <i>dallanneyi</i>			
565.	1819 <i>Banksia grandis</i> (Bull Banksia, Pulgarla)			
566.	1834 <i>Banksia menziesii</i> (Firewood Banksia)			
567.	1842 <i>Banksia prionotes</i> (Acorn Banksia)			
568.	32077 <i>Banksia sessilis</i> var. <i>cygnorum</i>			
569.	15607 <i>Conospermum acerosum</i> subsp. <i>acerosum</i>			
570.	15513 <i>Conospermum boreale</i> subsp. <i>boreale</i>			
571.	15041 <i>Conospermum canaliculatum</i>			
572.	15516 <i>Conospermum canaliculatum</i> subsp. <i>canaliculatum</i>			
573.	1885 <i>Conospermum triplinervium</i> (Tree Smokebush)			
574.	15839 <i>Grevillea preissii</i> subsp. <i>preissii</i>			
575.	2119 <i>Grevillea vestita</i>			
576.	12824 <i>Grevillea vestita</i> subsp. <i>vestita</i>			
577.	2146 <i>Hakea costata</i> (Ribbed Hakea)			
578.	2175 <i>Hakea lissocarpha</i> (Honey Bush)			
579.	2197 <i>Hakea prostrata</i> (Harsh Hakea)			
580.	2203 <i>Hakea ruscifolia</i> (Candle Hakea)			
581.	2214 <i>Hakea trifurcata</i> (Two-leaf Hakea)			
582.	2258 <i>Persoonia comata</i>			
583.	20368 <i>Petrophile axillaris</i>			
584.	2286 <i>Petrophile brevifolia</i>			
585.	2299 <i>Petrophile linearis</i> (Pixie Mops)			
586.	2301 <i>Petrophile macrostachya</i>			
587.	2309 <i>Petrophile serruriae</i>			
588.	2316 <i>Stirlingia latifolia</i> (Blueboy)			
589.	2329 <i>Synaphea spinulosa</i>			
590.	15532 <i>Synaphea spinulosa</i> subsp. <i>spinulosa</i>			
Psoraceae				
591.	28000 <i>Psora decipiens</i>			
Pteridaceae				
592.	45 <i>Pteris vittata</i> (Chinese Brake)			
Racopilaceae				
593.	32480 <i>Racopilum cuspidigerum</i> var. <i>convolutaceum</i>			
Ramalinaceae				
594.	27793 <i>Lecania sylvestris</i>		P2	Y
595.	31312 <i>Lecania turicensis</i> var. <i>turicensis</i>		P2	
Ranunculaceae				
596.	10804 <i>Clematis linearifolia</i>			
597.	2932 <i>Ranunculus colonorum</i> (Common Buttercup)			
598.	2933 <i>Ranunculus muricatus</i> (Sharp Buttercup)	Y		
Restionaceae				
599.	1056 <i>Alexgeorgea nitens</i>			

Name ID	Species Name	Naturalised	Conservation Code	¹ Endemic To Query Area
600.	17663 <i>Desmocladus asper</i>			
601.	16595 <i>Desmocladus flexuosus</i>			
602.	1070 <i>Hypolaena exsulca</i>			
603.	17841 <i>Hypolaena pubescens</i>			
604.	18074 <i>Lepidobolus preissianus</i> subsp. <i>preissianus</i>			
Rhamnaceae				
605.	4802 <i>Cryptandra mutila</i>			
606.	4809 <i>Cryptandra pungens</i>			
607.	4810 <i>Cryptandra scoparia</i>			
608.	4828 <i>Spyridium globulosum</i> (Basket Bush)			
609.	15066 <i>Stenanthemum notiale</i> subsp. <i>chamelum</i>			
610.	11665 <i>Trymalium ledifolium</i> var. <i>ledifolium</i>			
611.	33418 <i>Trymalium odoratissimum</i> subsp. <i>odoratissimum</i>			
Rhodomelaceae				
612.	26689 <i>Coeloclonium umbellula</i>			
613.	26752 <i>Dasyclonium incisum</i>			
614.	26761 <i>Dictyomenia harveyana</i>			
615.	26762 <i>Dictyomenia sonderi</i>			
616.	26763 <i>Dictyomenia tridens</i>			
617.	26919 <i>Herposiphonia rostrata</i>			
618.	26922 <i>Herposiphonia versicolor</i>			
619.	26998 <i>Laurencia brongniartii</i>			
620.	27011 <i>Lenormandia latifolia</i>			
621.	27013 <i>Lenormandia spectabilis</i>			
622.	27108 <i>Osmundaria spiralis</i>			
623.	27173 <i>Polysiphonia decipiens</i>			
624.	27190 <i>Protokuetzingia australasica</i>			
Rhodymeniaceae				
625.	27015 <i>Leptosomia rosea</i>			
Ricciaceae				
626.	<i>Riccia bifurca</i>			
Rubiaceae				
627.	7323 <i>Galium murale</i> (Small Goosegrass)	Y		
628.	7348 <i>Opercularia hispidula</i> (Hispid Stinkweed)			
629.	18255 <i>Opercularia vaginata</i> (Dog Weed)			
Rutaceae				
630.	11381 <i>Boronia ramosa</i> subsp. <i>anethifolia</i>			
631.	44593 <i>Coleonema pulchellum</i>	Y		
632.	4453 <i>Diplolaena angustifolia</i> (Yanchep Rose)			
633.	18529 <i>Philotheca spicata</i> (Pepper and Salt)			
634.	18547 <i>Rhadinothamnus anceps</i>			
Santalaceae				
635.	10765 <i>Exocarpos sparteus</i> (Broom Ballart, Djuk)			
636.	2344 <i>Leptomeria empetriformis</i>			
637.	2350 <i>Leptomeria pauciflora</i> (Sparse-flowered Currant Bush)			
638.	2352 <i>Leptomeria preissiana</i>			
Sapindaceae				
639.	18541 <i>Diplopeltis huegellii</i> subsp. <i>huegellii</i>			
Sargassaceae				
640.	26586 <i>Caulocystis uvifera</i>			
641.	26946 <i>Hormophysa cuneiformis</i>			
642.	27238 <i>Sargassum distichum</i>			
643.	42785 <i>Sirophysalis trinodis</i>			
644.	27345 <i>Turbinaria gracilis</i>			
Scrophulariaceae				
645.	7054 <i>Dischisma arenarium</i>	Y		
646.	17175 <i>Eremophila glabra</i> subsp. <i>albicans</i>			
647.	7289 <i>Myoporum caprarioides</i> (Slender Myoporum)			
648.	7291 <i>Myoporum insulare</i> (Blueberry Tree, boobialla)			
649.	7107 <i>Verbascum virgatum</i> (Twiggy Mullein)	Y		
Scytosiphonaceae				
650.	26694 <i>Colpomenia sinuosa</i>			
651.	27126 <i>Petalonia fascia</i>			
652.	35911 <i>Scytosiphon lomentaria</i>			

Name ID	Species Name	Naturalised	Conservation Code	¹ Endemic To Query Area
Solanaceae				
653.	11725 <i>Anthocercis ilicifolia</i> subsp. <i>ilicifolia</i>			
654.	6949 <i>Anthocercis littorea</i> (Yellow Tailflower)			
655.	6983 <i>Physalis peruviana</i> (Cape Gooseberry)	Y		
656.	7020 <i>Solanum linnaeanum</i> (Apple of Sodom)	Y		
657.	7022 <i>Solanum nigrum</i> (Black Berry Nightshade)	Y		
658.	9259 <i>Solanum nodiflorum</i> (Glossy Nightshade)	Y		
659.	7037 <i>Solanum symonii</i>			
Solieriaceae				
660.	48503 <i>Betaphycus speciosus</i>			
Strophariaceae				
661.	<i>Gymnopilus allantopus</i>			
662.	38830 <i>Psilocybe coprophila</i>			
Stylidiaceae				
663.	7677 <i>Levenhookia stipitata</i> (Common Stylewort)			
664.	7679 <i>Stylidium adpressum</i> (Trigger-on-stilts)			
665.	30278 <i>Stylidium androsaceum</i>			
666.	30276 <i>Stylidium bicolor</i>			
667.	7693 <i>Stylidium brunonianum</i> (Pink Fountain Triggerplant)			
668.	7694 <i>Stylidium bulbiferum</i> (Circus Triggerplant)			
669.	7696 <i>Stylidium calcaratum</i> (Book Triggerplant)			
670.	7709 <i>Stylidium crossocephalum</i> (Posy Triggerplant)			
671.	7710 <i>Stylidium cygnorum</i>			
672.	7713 <i>Stylidium dichotomum</i> (Pins-and-needles)			
673.	25801 <i>Stylidium hesperium</i>			
674.	13127 <i>Stylidium maritimum</i>		P3	
675.	25829 <i>Stylidium neurophyllum</i> (Coastal Plain Triggerplant)			
676.	7774 <i>Stylidium piliferum</i> (Common Butterfly Triggerplant)			
677.	25837 <i>Stylidium purpureum</i> (Purple Fountain Triggerplant)			
678.	7785 <i>Stylidium repens</i> (Matted Triggerplant)			
679.	20521 <i>Stylidium rigidulum</i>			
680.	25806 <i>Stylidium scariosum</i>			
681.	7798 <i>Stylidium schoenoides</i> (Cow Kicks)			
Tamaricaceae				
682.	15741 <i>Tamarix aphylla</i> (Athel Tree)	Y		
Teloschistaceae				
683.	31099 <i>Caloplaca kantvilasii</i>			
684.	27754 <i>Fulgensia subbracteata</i>			
Thuidiaceae				
685.	32486 <i>Thuidium sparsum</i> var. <i>hastatum</i>			
Thymelaeaceae				
686.	5232 <i>Pimelea argentea</i> (Silvery Leaved Pimelea)			
687.	5237 <i>Pimelea calcicola</i>		P3	
688.	5243 <i>Pimelea ferruginea</i>			
689.	5244 <i>Pimelea floribunda</i>			
690.	5251 <i>Pimelea imbricata</i>			
691.	11402 <i>Pimelea imbricata</i> var. <i>piligera</i>			
692.	5254 <i>Pimelea leucantha</i>			
693.	5268 <i>Pimelea sulphurea</i> (Yellow Banjine)			
Tremellaceae				
694.	<i>Tremella mesenterica</i>			
Typhaceae				
695.	99 <i>Typha orientalis</i> (Bulrush, Cumbungi)			
Ulvaceae				
696.	27352 <i>Ulva lactuca</i>			
Urticaceae				
697.	1762 <i>Parietaria debilis</i> (Pellitory)			
Verbenaceae				
698.	18197 <i>Phyla nodiflora</i>	Y		
699.	6734 <i>Phyla nodiflora</i> var. <i>nodiflora</i>	Y		
Violaceae				
700.	5216 <i>Hybanthus calycinus</i> (Wild Violet)			
701.	12007 <i>Hybanthus floribundus</i> subsp. <i>floribundus</i>			

Name ID	Species Name	Naturalised	Conservation Code	¹ Endemic To Query Area
Vitaceae				
702.	17042 <i>Vitis vinifera</i>	Y		
Wrangeliaceae				
703.	26884 <i>Griffithsia ovalis</i>			
Xanthorrhoeaceae				
704.	1256 <i>Xanthorrhoea preissii</i> (Grass tree, Palga)			
Zamiaceae				
705.	85 <i>Macrozamia riedlei</i> (Zamia, Djiridji)			

Conservation Codes
T - Rare or likely to become extinct
X - Presumed extinct
IA - Protected under international agreement
S - Other specially protected fauna
1 - Priority 1
2 - Priority 2
3 - Priority 3
4 - Priority 4
5 - Priority 5

¹ For NatureMap's purposes, species flagged as endemic are those whose records are wholly contained within the search area. Note that only those records complying with the search criterion are included in the calculation. For example, if you limit records to those from a specific datasource, only records from that datasource are used to determine if a species is restricted to the query area.

NatureMap Species Report

Created By Guest user on 05/12/2018

Current Names Only Yes

Core Datasets Only Yes

Data Source Atlas of Australian Birds or Birdata - Birdlife Australia or Carnaby's Cockatoo Observations

Method or Carnaby's Cockatoo Roost Sites or Fauna Survey Returns Database or Quenda

Vertices Community Survey or WA Threatened Fauna Database or Western Australian Museum Bird Database or Western Australian Museum Mammal Database or Western Australian Museum Reptile Database

'By Line'

31° 30' 35" S, 115° 38' 59" E 31° 34' 33" S, 115° 40' 14" E

	Name ID	Species Name	Naturalised	Conservation Code	¹ Endemic To Query Area
1.	24260	<i>Acanthiza apicalis</i> (Broad-tailed Thornbill, Inland Thornbill)			
2.	24261	<i>Acanthiza chrysorrhoa</i> (Yellow-rumped Thornbill)			
3.	24262	<i>Acanthiza inornata</i> (Western Thornbill)			
4.	24560	<i>Acanthorhynchus superciliosus</i> (Western Spinebill)			
5.	25535	<i>Accipiter cirrocephalus</i> (Collared Sparrowhawk)			
6.	25536	<i>Accipiter fasciatus</i> (Brown Goshawk)			
7.		<i>Acercella falcipes</i>			
8.	42368	<i>Acritoscincus trilineatus</i> (Western Three-lined Skink)			
9.	25755	<i>Acrocephalus australis</i> (Australian Reed Warbler)			
10.	24831	<i>Acrocephalus australis</i> subsp. <i>gouldi</i> (Australian Reed Warbler)			
11.	25544	<i>Aegotheles cristatus</i> (Australian Owllet-nightjar)			
12.	24310	<i>Anas castanea</i> (Chestnut Teal)			
13.	24312	<i>Anas gracilis</i> (Grey Teal)			
14.	24313	<i>Anas platyrhynchos</i> (Mallard)			
15.	24315	<i>Anas rhynchotis</i> (Australasian Shoveler)			
16.	24316	<i>Anas superciliosa</i> (Pacific Black Duck)			
17.	47414	<i>Anhinga novaehollandiae</i> (Australasian Darter)			
18.	24506	<i>Anous tenuirostris</i> subsp. <i>melanops</i> (Australian Lesser Noddy)		T	
19.	24561	<i>Anthochaera carunculata</i> (Red Wattlebird)			
20.	24562	<i>Anthochaera lunulata</i> (Western Little Wattlebird)			
21.	24599	<i>Anthus australis</i> subsp. <i>australis</i> (Australian Pipit)			
22.	24991	<i>Aprasia repens</i> (Sand-plain Worm-lizard)			
23.	25554	<i>Apus pacificus</i> (Fork-tailed Swift, Pacific Swift)		IA	
24.	24285	<i>Aquila audax</i> (Wedge-tailed Eagle)			
25.	24208	<i>Arctocephalus forsteri</i> (New Zealand Fur Seal, long-nosed fur-seal)		S	
26.	41324	<i>Ardea modesta</i> (great egret, white egret)			
27.	24341	<i>Ardea pacifica</i> (White-necked Heron)			
28.	25566	<i>Artamus cinereus</i> (Black-faced Woodswallow)			
29.	24353	<i>Artamus cyanopterus</i> (Dusky Woodswallow)			
30.	24356	<i>Artamus personatus</i> (Masked Woodswallow)			
31.	33971	<i>Austroconops mcmillani</i> (McMillan's biting midge (Swan Coastal Plain), biting midge (southwest))		P2	
32.	24318	<i>Aythya australis</i> (Hardhead)			
33.		<i>Barnardius zonarius</i>			
34.	24162	<i>Bettongia penicillata</i> subsp. <i>ogilbyi</i> (Woylie, Brush-tailed Bettong)		T	
35.	24319	<i>Biziura lobata</i> (Musk Duck)			
36.	42381	<i>Brachyurophis semifasciatus</i> (Southern Shovel-nosed Snake)			
37.	25714	<i>Cacatua pastinator</i> (Western Long-billed Corella)			
38.	25715	<i>Cacatua roseicapilla</i> (Galah)			
39.	25716	<i>Cacatua sanguinea</i> (Little Corella)			
40.	24729	<i>Cacatua tenuirostris</i> (Eastern Long-billed Corella)	Y		
41.	25598	<i>Cacomantis flabelliformis</i> (Fan-tailed Cuckoo)			
42.	42307	<i>Cacomantis pallidus</i> (Pallid Cuckoo)			
43.	24788	<i>Calidris ruficollis</i> (Red-necked Stint)		IA	
44.	24734	<i>Calyptorhynchus latirostris</i> (Carnaby's Cockatoo, White-tailed Short-billed Black Cockatoo)		T	
45.	48400	<i>Calyptorhynchus</i> sp. (white-tailed black cockatoo)		T	
46.	24254	<i>Camelus dromedarius</i> (Dromedary, Camel)	Y		

Name ID	Species Name	Naturalised	Conservation Code	¹ Endemic To Query Area
47.	25335 <i>Caretta caretta</i> (Loggerhead Turtle)		T	
48.	24086 <i>Cercartetus concinnus</i> (Western Pygmy-possum, Mundarda)			
49.	24186 <i>Chalinolobus gouldii</i> (Gould's Wattled Bat)			
50.	24187 <i>Chalinolobus morio</i> (Chocolate Wattled Bat)			
51.	24377 <i>Charadrius ruficapillus</i> (Red-capped Plover)			
52.	25336 <i>Chelonia mydas</i> (Green Turtle)		T	
53.	24321 <i>Chenonetta jubata</i> (Australian Wood Duck, Wood Duck)			
54.	47909 <i>Cheramoeca leucosterna</i> (White-backed Swallow)			
55.	<i>Cherax quinquecarinatus</i>			
56.	24980 <i>Christinus marmoratus</i> (Marbled Gecko)			
57.	<i>Chroicocephalus novaehollandiae</i>			
58.	24288 <i>Circus approximans</i> (Swamp Harrier)			
59.	24289 <i>Circus assimilis</i> (Spotted Harrier)			
60.	24774 <i>Cladorhynchus leucocephalus</i> (Banded Stilt)			
61.	25675 <i>Colluricincla harmonica</i> (Grey Shrike-thrush)			
62.	24399 <i>Columba livia</i> (Domestic Pigeon)	Y		
63.	25568 <i>Coracina novaehollandiae</i> (Black-faced Cuckoo-shrike)			
64.	25592 <i>Corvus coronoides</i> (Australian Raven)			
65.	24671 <i>Coturnix pectoralis</i> (Stubble Quail)			
66.	24420 <i>Cracticus nigrogularis</i> (Pied Butcherbird)			
67.	25595 <i>Cracticus tibicen</i> (Australian Magpie)			
68.	25596 <i>Cracticus torquatus</i> (Grey Butcherbird)			
69.	24918 <i>Crenadactylus ocellatus</i> subsp. <i>ocellatus</i> (Clawless Gecko)			
70.	30893 <i>Cryptoblepharus buchananii</i>			
71.	25020 <i>Cryptoblepharus plagiocephalus</i>			
72.	30899 <i>Ctenophorus adelaidensis</i> (Southern Heath Dragon, Western Heath Dragon)			
73.	25027 <i>Ctenotus australis</i>			
74.	25039 <i>Ctenotus fallens</i>			
75.	25087 <i>Cyclodomorphus celatus</i> (Western Slender Blue-tongue)			
76.	24322 <i>Cygnus atratus</i> (Black Swan)			
77.	30901 <i>Dacelo novaeguineae</i> (Laughing Kookaburra)	Y		
78.	<i>Daphnia carinata</i>			
79.	25673 <i>Daphoenositta chrysoptera</i> (Varied Sittella)			
80.	24092 <i>Dasyurus geoffroii</i> (Chuditch, Western Quoll)		T	
81.	30906 <i>Delma concinna</i> (Javelin Legless Lizard)			
82.	30905 <i>Delma concinna</i> subsp. <i>concinna</i> (Javelin Legless Lizard)			
83.	25766 <i>Delma fraseri</i> (Fraser's Legless Lizard)			
84.	24999 <i>Delma grayii</i>			
85.	25296 <i>Demansia psammophis</i> subsp. <i>reticulata</i> (Yellow-faced Whipsnake)			
86.	25607 <i>Dicaeum hirundinaceum</i> (Mistletoebird)			
87.	24470 <i>Dromaius novaehollandiae</i> (Emu)			
88.	25251 <i>Echiopsis curta</i> (Bardick)			
89.	25096 <i>Egernia kingii</i> (King's Skink)			
90.	25100 <i>Egernia napoleonis</i>			
91.	<i>Egretta garzetta</i>			
92.	<i>Egretta novaehollandiae</i>			
93.	<i>Elanus axillaris</i>			
94.	24290 <i>Elanus caeruleus</i> subsp. <i>axillaris</i> (Australian Black-shouldered Kite)			
95.	47937 <i>Eiseyornis melanops</i> (Black-fronted Dotterel)			
96.	<i>Eolophus roseicapillus</i>			
97.	24652 <i>Eopsaltria georgiana</i> (White-breasted Robin)			
98.	24567 <i>Epthianura albifrons</i> (White-fronted Chat)			
99.	24379 <i>Erythronyx cinctus</i> (Red-kneed Dotterel)			
100.	25621 <i>Falco berigora</i> (Brown Falcon)			
101.	24471 <i>Falco berigora</i> subsp. <i>berigora</i> (Brown Falcon)			
102.	25622 <i>Falco cenchroides</i> (Australian Kestrel, Nankeen Kestrel)			
103.	25623 <i>Falco longipennis</i> (Australian Hobby)			
104.	25624 <i>Falco peregrinus</i> (Peregrine Falcon)		S	
105.	25727 <i>Fulica atra</i> (Eurasian Coot)			
106.	25729 <i>Gallinula tenebrosa</i> (Dusky Moorhen)			
107.	25530 <i>Gerygone fusca</i> (Western Gerygone)			
108.	24271 <i>Gerygone fusca</i> subsp. <i>fusca</i> (Western Gerygone)			
109.	47962 <i>Glyciphila melanops</i> (Tawny-crowned Honeyeater)			
110.	24443 <i>Grallina cyanoleuca</i> (Magpie-lark)			
111.	24295 <i>Haliastur sphenurus</i> (Whistling Kite)			
112.	24689 <i>Halobaena caerulea</i> (Blue Petrel)			
113.	25410 <i>Heleioporus eyrei</i> (Moaning Frog)			
114.	25412 <i>Heleioporus psammophilus</i> (Sand Frog)			
115.	25119 <i>Hemiergis quadrilineata</i>			
116.	47965 <i>Hieraetus morphnoides</i> (Little Eagle)			

Name ID	Species Name	Naturalised	Conservation Code	¹ Endemic To Query Area
117.	25734 <i>Himantopus himantopus</i> (Black-winged Stilt)			
118.	24491 <i>Hirundo neoxena</i> (Welcome Swallow)			
119.	48582 <i>Hurleya</i> sp. (WAM C23193) (Crystal Cave Crangonyctoid, cave shrimp)		T	Y
120.	24215 <i>Hydromys chrysogaster</i> (Water-rat, Rakali)		P4	
121.	43384 <i>Hydrophis platurus</i> (Yellow-bellied Seasnake)			
122.	48587 <i>Hydroprogne caspia</i> (Caspian Tern)		IA	
123.	48588 <i>Isoodon fusciventer</i> (Quenda, southwestern brown bandicoot)		P4	
124.	24367 <i>Lalage tricolor</i> (White-winged Triller)			
125.	25638 <i>Larus pacificus</i> (Pacific Gull)			
126.	25128 <i>Lerista christinae</i>			
127.	25131 <i>Lerista distinguenda</i>			
128.	25133 <i>Lerista elegans</i>			
129.	25148 <i>Lerista lineopunctulata</i>			
130.	25165 <i>Lerista praepedita</i>			
131.	25005 <i>Lialis burtonis</i>			
132.	25661 <i>Lichmera indistincta</i> (Brown Honeyeater)			
133.	24582 <i>Lichmera indistincta</i> subsp. <i>indistincta</i> (Brown Honeyeater)			
134.	25415 <i>Limnodynastes dorsalis</i> (Western Banjo Frog)			
135.	25378 <i>Litoria adelaidensis</i> (Slender Tree Frog)			
136.	25388 <i>Litoria moorei</i> (Motorbike Frog)			
137.	24690 <i>Macronectes giganteus</i> (Southern Giant Petrel)		IA	
138.	24132 <i>Macropus fuliginosus</i> (Western Grey Kangaroo)			
139.	24326 <i>Malacorhynchus membranaceus</i> (Pink-eared Duck)			
140.	25651 <i>Malurus lamberti</i> (Variegated Fairy-wren)			
141.	24544 <i>Malurus lamberti</i> subsp. <i>assimilis</i> (Variegated Fairy-wren)			
142.	25652 <i>Malurus leucopterus</i> (White-winged Fairy-wren)			
143.	24549 <i>Malurus leucopterus</i> subsp. <i>leuconotus</i> (White-winged Fairy-wren)			
144.	25654 <i>Malurus splendens</i> (Splendid Fairy-wren)			
145.	24583 <i>Manorina flavigula</i> (Yellow-throated Miner)			
146.	25758 <i>Megalurus gramineus</i> (Little Grassbird)			
147.	24838 <i>Megalurus gramineus</i> subsp. <i>gramineus</i> (Little Grassbird)			
148.	25184 <i>Menetia greyii</i>			
149.	24598 <i>Merops ornatus</i> (Rainbow Bee-eater)			
150.	24076 <i>Mesoplodon bowdoini</i> (Andrew's Beaked Whale)			
151.	<i>Microcarbo melanoleucos</i>			
152.	25494 <i>Morelia spilota</i> (Carpet Python)			
153.	25240 <i>Morelia spilota</i> subsp. <i>imbricata</i> (Carpet Python)			
154.	25191 <i>Morethia lineocellata</i>			
155.	25192 <i>Morethia obscura</i>			
156.	24223 <i>Mus musculus</i> (House Mouse)	Y		
157.	24042 <i>Mustela putorius</i> (European Polecat, Ferret)	Y		
158.	25420 <i>Myobatrachus gouldii</i> (Turtle Frog)			
159.	25249 <i>Neelaps calonotos</i> (Black-striped Snake, black-striped burrowing snake)		P3	
160.	24738 <i>Neophema elegans</i> (Elegant Parrot)			
161.	24210 <i>Neophoca cinerea</i> (Australian Sea-lion)		T	
162.	25252 <i>Notechis scutatus</i> (Tiger Snake)			
163.	25564 <i>Nycticorax caledonicus</i> (Rufous Night Heron)			
164.	24407 <i>Ocyphaps lophotes</i> (Crested Pigeon)			
165.	24085 <i>Oryctolagus cuniculus</i> (Rabbit)	Y		
166.	24328 <i>Oxyura australis</i> (Blue-billed Duck)		P4	
167.	25680 <i>Pachycephala rufiventris</i> (Rufous Whistler)			
168.	24692 <i>Pachyptila belcheri</i> (Slender-billed Prion)			
169.	24693 <i>Pachyptila desolata</i> (Antarctic Prion)			
170.	24696 <i>Pachyptila turtur</i> (Fairy Prion)			
171.	48591 <i>Pandion cristatus</i> (Osprey, Eastern Osprey)		IA	
172.	25253 <i>Parasuta gouldii</i>			
173.	25681 <i>Pardalotus punctatus</i> (Spotted Pardalote)			
174.	25682 <i>Pardalotus striatus</i> (Striated Pardalote)			
175.	24630 <i>Pardalotus striatus</i> subsp. <i>westraliensis</i> (Striated Pardalote)			
176.	24648 <i>Pelecanus conspicillatus</i> (Australian Pelican)			
177.	48060 <i>Petrochelidon ariel</i> (Fairy Martin)			
178.	48061 <i>Petrochelidon nigricans</i> (Tree Martin)			
179.	48066 <i>Petroica boodang</i> (Scarlet Robin)			
180.	25697 <i>Phalacrocorax carbo</i> (Great Cormorant)			
181.	24666 <i>Phalacrocorax melanoleucos</i> subsp. <i>melanoleucos</i> (Little Pied Cormorant)			
182.	24667 <i>Phalacrocorax sulcirostris</i> (Little Black Cormorant)			
183.	25699 <i>Phalacrocorax varius</i> (Pied Cormorant)			
184.	24409 <i>Phaps chalcoptera</i> (Common Bronzewing)			
185.	25587 <i>Phaps elegans</i> (Brush Bronzewing)			
186.	48071 <i>Phylidonyris niger</i> (White-cheeked Honeyeater)			

Name ID	Species Name	Naturalised	Conservation Code	¹ Endemic To Query Area
187.	24596 <i>Phylidonyris novaehollandiae</i> (New Holland Honeyeater)			
188.	24841 <i>Platalea flavipes</i> (Yellow-billed Spoonbill)			
189.	25721 <i>Platycercus zonarius</i> (Australian Ringneck, Ring-necked Parrot)			
190.	25703 <i>Podargus strigoides</i> (Tawny Frogmouth)			
191.	24679 <i>Podargus strigoides</i> subsp. <i>brachypterus</i> (Tawny Frogmouth)			
192.	25704 <i>Podiceps cristatus</i> (Great Crested Grebe)			
193.	25510 <i>Pogona minor</i> (Dwarf Bearded Dragon)			
194.	24907 <i>Pogona minor</i> subsp. <i>minor</i> (Dwarf Bearded Dragon)			
195.	24681 <i>Poliiocephalus poliocephalus</i> (Hoary-headed Grebe)			
196.	25731 <i>Porphyrio porphyrio</i> (Purple Swamphen)			
197.	24771 <i>Porzana tabuensis</i> (Spotless Crake)			
198.	25511 <i>Pseudonaja affinis</i> (Dugite)			
199.	25259 <i>Pseudonaja affinis</i> subsp. <i>affinis</i> (Dugite)			
200.	24702 <i>Pterodroma brevirostris</i> (Kerguelen Petrel)			
201.	<i>Purpureicephalus spurius</i>			
202.	24243 <i>Rattus fuscipes</i> (Western Bush Rat)			
203.	24245 <i>Rattus rattus</i> (Black Rat)	Y		
204.	24776 <i>Recurvirostra novaehollandiae</i> (Red-necked Avocet)			
205.	48096 <i>Rhipidura albiscapa</i> (Grey Fantail)			
206.	25614 <i>Rhipidura leucophrys</i> (Willie Wagtail)			
207.	24454 <i>Rhipidura leucophrys</i> subsp. <i>leucophrys</i> (Willie Wagtail)			
208.	25534 <i>Sericornis frontalis</i> (White-browed Scrubwren)			
209.	25266 <i>Simoselaps bertholdi</i> (Jan's Banded Snake)			
210.	30948 <i>Smicromis brevirostris</i> (Weebill)			
211.	24108 <i>Sminthopsis crassicaudata</i> (Fat-tailed Dunnart)			
212.	24111 <i>Sminthopsis gilberti</i> (Gilbert's Dunnart)			
213.	24522 <i>Sterna bergii</i> (Crested Tern)			
214.	25589 <i>Streptopelia chinensis</i> (Spotted Turtle-Dove)	Y		
215.	25590 <i>Streptopelia senegalensis</i> (Laughing Turtle-Dove)	Y		
216.	25518 <i>Strophurus spinigerus</i>			
217.	24942 <i>Strophurus spinigerus</i> subsp. <i>spinigerus</i>			
218.	33992 <i>Synemon gratiosa</i> (Graceful Sunmoth)		P4	
219.	25705 <i>Tachybaptus novaehollandiae</i> (Australasian Grebe, Black-throated Grebe)			
220.	24207 <i>Tachyglossus aculeatus</i> (Short-beaked Echidna)			
221.	24331 <i>Tadorna tadornoides</i> (Australian Shelduck, Mountain Duck)			
222.	24167 <i>Tarsipes rostratus</i> (Honey Possum, Noolbenger)			
223.	48597 <i>Thalasseus bergii</i> (Crested Tern)		IA	
224.	24845 <i>Threskiornis spinicollis</i> (Straw-necked Ibis)			
225.	25203 <i>Tiliqua occipitalis</i> (Western Bluetongue)			
226.	25519 <i>Tiliqua rugosa</i>			
227.	25204 <i>Tiliqua rugosa</i> subsp. <i>aspera</i>			
228.	25207 <i>Tiliqua rugosa</i> subsp. <i>rugosa</i>			
229.	25549 <i>Todiramphus sanctus</i> (Sacred Kingfisher)			
230.	48141 <i>Tribonyx ventralis</i> (Black-tailed Native-hen)			
231.	25723 <i>Trichoglossus haematodus</i> (Rainbow Lorikeet)			
232.	24851 <i>Turnix velox</i> (Little Button-quail)			
233.	24069 <i>Tursiops truncatus</i> (Bottlenose Dolphin)			
234.	24855 <i>Tyto novaehollandiae</i> subsp. <i>novaehollandiae</i> (Masked Owl (southwest))		P3	
235.	25577 <i>Vanellus miles</i> (Masked Lapwing)			
236.	25218 <i>Varanus gouldii</i> (Bungarra or Sand Monitor)			
237.	24206 <i>Vespadelus regulus</i> (Southern Forest Bat)			
238.	24040 <i>Vulpes vulpes</i> (Red Fox)	Y		
239.	34113 <i>Westralunio carteri</i> (Carter's Freshwater Mussel)		T	
240.	25765 <i>Zosterops lateralis</i> (Grey-breasted White-eye, Silvereye)			

Conservation Codes

T - Rare or likely to become extinct
X - Presumed extinct
IA - Protected under international agreement
S - Other specially protected fauna
1 - Priority 1
2 - Priority 2
3 - Priority 3
4 - Priority 4
5 - Priority 5

¹ For NatureMap's purposes, species flagged as endemic are those whose records are wholly contained within the search area. Note that only those records complying with the search criterion are included in the calculation. For example, if you limit records to those from a specific datasource, only records from that datasource are used to determine if a species is restricted to the query area.

Appendix D – Flora data

Flora species list

Quadrat data

Conservation significant flora records

TEC/PEC analysis

Flora likelihood of occurrence

Flora species list

Family	Taxon	Status
Agavaceae	<i>Agave americana</i>	*
Aizoaceae	<i>Carpobrotus edulis</i>	*
Aizoaceae	<i>Carpobrotus virescens</i>	
Amaranthaceae	<i>Ptilotus drummondii</i> var. <i>drummondii</i>	
Amaranthaceae	<i>Ptilotus polystachyus</i>	
Anarthriaceae	<i>Lyginia imberbis</i>	
Apiaceae	<i>Daucus glochidiatus</i>	
Apiaceae	<i>Eryngium pinnatifidum</i>	
Apiaceae	<i>Eryngium</i> sp.	
Apiaceae	<i>Foeniculum vulgare</i>	*
Apiaceae	<i>Trachymene pilosa</i>	
Apocynaceae	<i>Gomphocarpus fruticosus</i>	*DP
Araceae	<i>Zantedeschia aethiopica</i>	*DP
Araliaceae	<i>Hydrocotyle hispidula</i>	
Araliaceae	<i>Trachymene pilosa</i>	
Asparagaceae	<i>Acanthocarpus preissii</i>	
Asparagaceae	<i>Agave americana</i>	*
Asparagaceae	<i>Asparagus asparagoides</i>	*DP + WoNS
Asparagaceae	<i>Lomandra caespitosa</i>	
Asparagaceae	<i>Lomandra maritima</i>	
Asparagaceae	<i>Lomandra preissii</i>	
Asparagaceae	<i>Lomandra</i> sp.	
Asparagaceae	<i>Sowerbaea laxiflora</i>	
Asparagaceae	<i>Thysanotus arenarius</i>	
Asparagaceae	<i>Thysanotus manglesianus</i>	
Asparagaceae	<i>Thysanotus pallida</i>	
Asparagaceae	<i>Thysanotus ?patersonii/manglesianus</i>	
Asparagaceae	<i>Thysanotus</i> sp.	
Asphodelaceae	<i>Trachyandra divaricata</i>	*
Asteraceae	<i>Arctotheca calendula</i>	*
Asteraceae	<i>Brachyscome iberidifolia</i>	
Asteraceae	<i>Conyza bonariensis</i>	*
Asteraceae	<i>Helichrysum luteoalbum</i>	*
Asteraceae	<i>Hypochaeris glabra</i>	*
Asteraceae	<i>Lagenophora huegelii</i>	
Asteraceae	<i>Leptorhynchos scaber</i>	
Asteraceae	<i>Milotia tenuifolia</i> var. <i>tenuifolia</i>	
Asteraceae	<i>Olearia axillaris</i>	
Asteraceae	<i>Olearia rudis</i>	
Asteraceae	<i>Osteospermum ecklonis</i>	*
Asteraceae	<i>Podolepis lessonii</i>	
Asteraceae	<i>Podotheca gnaphalioides</i>	
Asteraceae	<i>Quinetia urvillei</i>	
Asteraceae	<i>Rhodanthe citrina</i>	

Family	Taxon	Status
Asteraceae	<i>Siloxerus humifusus</i>	
Asteraceae	<i>Sonchus oleraceus</i>	*
Asteraceae	<i>Ursinia anthemoides</i>	*
Asteraceae	<i>Waitzia suaveolens</i> var. <i>suaveolens</i>	
Boraginaceae	<i>Echium plantagineum</i>	*DP
Brassicaceae	<i>Brassica tournefortii</i>	*
Brassicaceae	<i>Heliophila pusilla</i>	*
Brassicaceae	<i>Raphanus raphanistrum</i>	*
Cactaceae	<i>Opuntia stricta</i>	*DP + WoNS
Campanulaceae	<i>Isotoma hypocrateriformis</i>	
Campanulaceae	<i>Wahlenbergia capensis</i>	*
Caryophyllaceae	Caryophyllaceae sp.	
Caryophyllaceae	<i>Cerastium glomeratum</i>	*
Caryophyllaceae	<i>Minuartia mediterranea</i>	*
Caryophyllaceae	<i>Petrorhagia dubia</i>	*
Caryophyllaceae	<i>Silene gallica</i>	*
Caryophyllaceae	<i>Silene nocturna</i>	*
Casuarinaceae	<i>Allocasuarina fraseriana</i>	
Casuarinaceae	<i>Allocasuarina humilis</i>	
Celastraceae	<i>Tripterococcus brunonis</i>	
Chenopodiaceae	<i>Rhagodia baccata</i>	
Colchicaceae	<i>Burchardia congesta</i>	
Convolvulaceae	<i>Cuscuta planiflora</i>	*
Crassulaceae	<i>Crassula alata</i>	*
Crassulaceae	<i>Crassula colorata</i> var. <i>acuminata</i>	
Crassulaceae	<i>Crassula decumbens</i> var. <i>decumbens</i>	
Crassulaceae	<i>Crassula glomerata</i>	*
Cucurbitaceae	<i>Cucumis myriocarpus</i>	*
Cyperaceae	<i>Isolepis marginata</i>	
Cyperaceae	<i>Lepidosperma ?calcicola</i>	
Cyperaceae	<i>Lepidosperma ?pubisquameum</i>	
Cyperaceae	<i>Lepidosperma calcicola</i>	
Cyperaceae	<i>Lepidosperma</i> sp.	
Cyperaceae	<i>Mesomelaena pseudostygia</i>	
Cyperaceae	<i>Schoenus</i> sp. (sterile)	
Cyperaceae	<i>Tetragia octandra</i>	
Dasygongonaceae	<i>Calectasia narragara</i>	
Dilleniaceae	<i>Hibbertia hypericoides</i>	
Dilleniaceae	<i>Hibbertia racemosa</i>	
Dilleniaceae	<i>Hibbertia spicata</i> subsp. <i>leptotheca</i>	P3
Droseraceae	<i>Drosera erythrorhiza</i>	
Droseraceae	<i>Drosera menziesii</i>	
Droseraceae	<i>Drosera pallida</i>	
Ericaceae	<i>Astroloma ciliatum</i>	
Ericaceae	<i>Conostephium pendulum</i>	
Ericaceae	<i>Conostephium preissii</i>	

Family	Taxon	Status
Ericaceae	<i>Leucopogon ?nutans</i>	
Ericaceae	<i>Leucopogon insularis</i>	
Ericaceae	<i>Leucopogon nutans</i>	
Ericaceae	<i>Leucopogon parviflorus</i>	
Ericaceae	<i>Leucopogon polymorphus</i>	
Ericaceae	<i>Leucopogon propinquus</i>	
Ericaceae	<i>Leucopogon</i> sp. Yanchep (M. Hislop 1986)	P3
Ericaceae	<i>Lysinema pentapetalum</i>	
Euphorbiaceae	<i>Euphorbia peplus</i>	*
Euphorbiaceae	<i>Euphorbia terracina</i>	*
Euphorbiaceae	<i>Ricinus communis</i>	*
Fabaceae	<i>Acacia baileyana</i>	*
Fabaceae	<i>Acacia benthamii</i>	P2
Fabaceae	<i>Acacia cochlearis</i>	
Fabaceae	<i>Acacia cyclops</i>	
Fabaceae	<i>Acacia decurrens</i>	*
Fabaceae	<i>Acacia lasiocarpa</i> var. <i>lasiocarpa</i>	
Fabaceae	<i>Acacia longifolia</i> subsp. <i>longifolia</i>	*
Fabaceae	<i>Acacia longifolia</i> subsp. <i>sophorae</i>	*
Fabaceae	<i>Acacia pulchella</i> var. <i>glaberrima</i>	
Fabaceae	<i>Acacia rostellifera</i>	
Fabaceae	<i>Acacia saligna</i>	
Fabaceae	<i>Acacia truncata</i>	
Fabaceae	<i>Acacia willdenowiana</i>	
Fabaceae	<i>Bossiaea eriocarpa</i>	
Fabaceae	<i>Daviesia decurrens</i>	
Fabaceae	<i>Daviesia divaricata</i> subsp. <i>divaricata</i>	
Fabaceae	<i>Gastrolobium ?capitatum</i>	
Fabaceae	<i>Gastrolobium linearifolium</i>	
Fabaceae	<i>Gompholobium knightianum</i>	
Fabaceae	<i>Gompholobium tomentosum</i>	
Fabaceae	<i>Hardenbergia comptoniana</i>	
Fabaceae	<i>Hovea pungens</i>	
Fabaceae	<i>Hovea trisperma</i>	
Fabaceae	<i>Isotropis cuneifolia</i> subsp. <i>cuneifolia</i>	
Fabaceae	<i>Jacksonia calcicola</i>	
Fabaceae	<i>Jacksonia sternbergiana</i>	
Fabaceae	<i>Kennedia prostrata</i>	
Fabaceae	<i>Lupinus angustifolius</i>	*
Fabaceae	<i>Lupinus cosentinii</i>	*
Fabaceae	<i>Mirbelia spinosa</i>	
Fabaceae	<i>Sphaerolobium medium</i>	
Fabaceae	<i>Templetonia retusa</i>	
Fabaceae	<i>Trifolium arvense</i>	*
Fabaceae	<i>Trifolium campestre</i>	*
Fabaceae	<i>Trifolium dubium</i>	*

Family	Taxon	Status
Fabaceae	<i>Trifolium</i> sp.	*
Fabaceae	<i>Vicia sativa</i>	*
Geraniaceae	<i>Erodium botrys</i>	*
Geraniaceae	<i>Erodium cicutarium</i>	*
Geraniaceae	<i>Geranium molle</i>	*
Geraniaceae	<i>Pelargonium capitatum</i>	*
Goodeniaceae	Goodeniaceae sp.	
Goodeniaceae	<i>Lechenaultia linarioides</i>	(p)
Goodeniaceae	<i>Scaevola canescens</i>	
Goodeniaceae	<i>Scaevola crassifolia</i>	
Goodeniaceae	<i>Scaevola</i> sp.	
Haemodoraceae	<i>Anigozanthos humilis</i>	
Haemodoraceae	<i>Conostylis aculeata</i>	
Haemodoraceae	<i>Conostylis candicans</i> subsp. <i>candicans</i>	
Haemodoraceae	<i>Conostylis setigera</i>	
Haemodoraceae	<i>Conostylis setosa</i>	
Haemodoraceae	<i>Haemodorum laxum</i>	
Haemodoraceae	<i>Haemodorum</i> sp.	
Haemodoraceae	<i>Haemodorum spicatum</i>	
Haloragaceae	<i>Glischrocaryon angustifolium</i>	
Hemerocallidaceae	<i>Corynotheca micrantha</i> var. <i>micrantha</i>	
Hemerocallidaceae	<i>Dianella revoluta</i> var. <i>divaricata</i>	
Hemerocallidaceae	<i>Stypandra glauca</i>	
Hemerocallidaceae	<i>Tricoryne elatior</i>	
Iridaceae	<i>Freesia alba</i> x <i>leichtlinii</i>	*
Iridaceae	<i>Gladiolus caryophyllaceus</i>	*
Iridaceae	<i>Moraea flaccida</i>	*DP
Iridaceae	<i>Orthrosanthus laxus</i> var. <i>laxus</i>	
Iridaceae	<i>Romulea rosea</i>	*
Lamiaceae	<i>Hemiandra pungens</i>	
Lauraceae	<i>Cassytha flava</i>	
Lauraceae	<i>Cassytha racemosa</i> forma <i>racemosa</i>	
Lauraceae	<i>Nuytsia floribunda</i>	
Loganiaceae	<i>Phyllangium</i> sp.	
Montiaceae	<i>Calandrinia liniflora</i>	
Montiaceae	<i>Calandrinia tholiformis</i>	
Myrtaceae	<i>Baeckea</i> sp. Limestone (N. Gibson & M.N. Lyons 1425)	P1
Myrtaceae	<i>Calothamnus lateralis</i>	
Myrtaceae	<i>Calothamnus quadrifidus</i> subsp. <i>quadrifidus</i>	
Myrtaceae	<i>Calothamnus sanguineus</i>	
Myrtaceae	<i>Calytrix ?flavescens</i>	
Myrtaceae	<i>Chamelaucium uncinatum</i>	
Myrtaceae	<i>Corymbia calophylla</i>	
Myrtaceae	<i>Eremaea pauciflora</i>	
Myrtaceae	<i>Eucalyptus camaldulensis</i>	#planted

Family	Taxon	Status
Myrtaceae	<i>Eucalyptus decipiens</i>	
Myrtaceae	<i>Eucalyptus foecunda</i>	
Myrtaceae	<i>Eucalyptus gomphocephala</i>	
Myrtaceae	<i>Eucalyptus marginata</i>	
Myrtaceae	<i>Eucalyptus rudis</i>	
Myrtaceae	<i>Eucalyptus todtiana</i>	
Myrtaceae	<i>Leptospermum spinescens</i>	
Myrtaceae	<i>Melaleuca cardiophylla</i>	
Myrtaceae	<i>Melaleuca huegelii</i>	
Myrtaceae	<i>Melaleuca raphiophylla</i>	
Myrtaceae	<i>Melaleuca</i> sp. Wanneroo (G.J. Keighery 16705)	EN
Myrtaceae	<i>Melaleuca systema</i>	
Orchidaceae	? <i>Pterostylis</i> sp.	
Orchidaceae	<i>Caladenia arenicola</i>	
Orchidaceae	<i>Caladenia flava</i>	
Orchidaceae	<i>Caladenia latifolia</i>	
Orchidaceae	<i>Caladenia longicauda</i> subsp. <i>calcigena</i>	
Orchidaceae	<i>Caladenia</i> sp.	
Orchidaceae	<i>Diuris corymbosa</i>	
Orchidaceae	<i>Elythranthera brunonis</i>	
Orchidaceae	<i>Pterostylis</i> sp. (flo. spent)	
Orchidaceae	<i>Pyrorchis nigricans</i>	
Orobanchaceae	<i>Parentucellia latifolia</i>	*
Oxalidaceae	<i>Oxalis pes-caprae</i>	*
Papaveraceae	<i>Fumaria muralis</i>	*
Phyllanthaceae	<i>Phyllanthus calycinus</i>	
Phyllanthaceae	<i>Poranthera microphylla</i>	
Poaceae	<i>Aira caryophyllea</i>	*
Poaceae	<i>Aira cupaniana</i>	*
Poaceae	<i>Arundo donax</i>	*
Poaceae	<i>Austrostipa compressa</i>	
Poaceae	<i>Austrostipa flavescens</i>	
Poaceae	<i>Avena barbata</i>	*
Poaceae	<i>Briza maxima</i>	*
Poaceae	<i>Briza minor</i>	*
Poaceae	<i>Bromus diandrus</i>	*
Poaceae	<i>Ehrharta calycina</i>	*
Poaceae	<i>Ehrharta longiflora</i>	*
Poaceae	<i>Ehrharta</i> sp.	*
Poaceae	<i>Eragrostis curvula</i>	*
Poaceae	<i>Lagurus ovatus</i>	*
Poaceae	<i>Lolium multiflorum</i>	*
Poaceae	<i>Lolium perenne</i>	*
Poaceae	<i>Lolium rigidum</i>	*
Poaceae	<i>Lolium</i> sp.	*
Poaceae	<i>Neurachne alopecuroidea</i>	

Family	Taxon	Status
Poaceae	<i>Poa poiformis</i>	
Poaceae	Poaceae sp.	
Poaceae	<i>Rytidosperma caespitosum</i>	
Poaceae	<i>Rytidosperma setaceum</i>	
Poaceae	<i>Vulpia myuros forma myuros</i>	*
Polygalaceae	<i>Comesperma confertum</i>	
Polygalaceae	<i>Comesperma</i> sp.	
Primulaceae	<i>Lysimachia arvensis</i>	*
Proteaceae	<i>Banksia attenuata</i>	
Proteaceae	<i>Banksia dallanneyi</i>	
Proteaceae	<i>Banksia grandis</i>	
Proteaceae	<i>Banksia menziesii</i>	
Proteaceae	<i>Banksia sessilis</i>	
Proteaceae	<i>Conospermum triplinervium</i>	
Proteaceae	<i>Grevillea preissii</i> subsp. <i>preissii</i>	
Proteaceae	<i>Grevillea vestita</i> subsp. <i>vestita</i>	
Proteaceae	<i>Hakea costata</i>	
Proteaceae	<i>Hakea lissocarpha</i>	
Proteaceae	<i>Hakea prostrata</i>	
Proteaceae	<i>Hakea ruscifolia</i>	
Proteaceae	<i>Hakea trifurcata</i>	
Proteaceae	<i>Petrophile axillaris</i>	
Proteaceae	<i>Petrophile brevifolia</i>	
Proteaceae	<i>Petrophile linearis</i>	
Proteaceae	<i>Petrophile macrostachya</i>	
Proteaceae	<i>Stirlingia latifolia</i>	
Proteaceae	<i>Synaphea spinulosa</i> subsp. <i>spinulosa</i>	
Ranunculaceae	<i>Clematis linearifolia</i>	
Ranunculaceae	<i>Clematis pubescens</i>	
Restionaceae	<i>Desmocladius flexuosus</i>	
Rhamnaceae	<i>Cryptandra multispina</i>	
Rhamnaceae	<i>Cryptandra mutila</i>	
Rhamnaceae	<i>Cryptandra scoparia</i>	
Rhamnaceae	<i>Spyridium globulosum</i>	
Rhamnaceae	<i>Stenanthemum notiale</i> subsp. <i>chamelum</i>	
Rhamnaceae	<i>Trymalium ledifolium</i> var. <i>ledifolium</i>	
Rubiaceae	<i>Galium murale</i>	*
Rubiaceae	<i>Opercularia echinocephala</i>	
Rubiaceae	<i>Opercularia vaginata</i>	
Rutaceae	<i>Philothea spicata</i>	
Santalaceae	<i>Leptomeria pauciflora</i>	
Santalaceae	<i>Santalum acuminatum</i>	
Sapindaceae	<i>Diplopeltis huegelii</i> subsp. <i>huegelii</i>	
Scrophulaceae	<i>Eremophila glabra</i>	#planted
Solanaceae	<i>Solanum linnaeanum</i>	*DP
Solanaceae	<i>Solanum nigrum</i>	*

Family	Taxon	Status
Stylidiaceae	<i>Levenhookia stipitata</i>	
Stylidiaceae	<i>Stylidium adpressum</i>	
Stylidiaceae	<i>Stylidium androsaceum</i>	
Stylidiaceae	<i>Stylidium brunonianum</i>	
Stylidiaceae	<i>Stylidium calcaratum</i>	
Stylidiaceae	<i>Stylidium maritimum</i>	P3
Stylidiaceae	<i>Stylidium rigidulum</i>	
Stylidiaceae	<i>Stylidium scariosum</i>	
Thymelaeaceae	<i>Pimelea argentea</i>	
Thymelaeaceae	<i>Pimelea calcicola</i>	P3
Thymelaeaceae	<i>Pimelea sulphurea</i>	
Thymelaeaceae	<i>Pimelea sylvestris</i>	
Typhaceae	<i>Typha orientalis</i>	
Verbenaceae	<i>Lantana camara</i>	*DP + WoNS
Violaceae	<i>Hybanthus calycinus</i>	
Xanthorrhoeaceae	<i>Xanthorrhoea gracilis</i>	
Xanthorrhoeaceae	<i>Xanthorrhoea preissii</i>	
Zamiaceae	<i>Macrozamia riedlei</i>	

* Introduced (weed) species

DP	Declared Pest
WoNS	Weeds of National Significance
EN	BC Act listed Threatened species
P1	DBCA Priority 3 species
P2	DBCA Priority 3 species
P3	DBCA Priority 3 species

Species by Vegetation Type

Family	Species	Status	VT01	VT02	VT03	VT04	VT05	VT06	VT07	VT08	VT09	VT10	VT11	VT14	Opp
Agavaceae	<i>Agave americana</i>	*													X
Aizoaceae	<i>Carpobrotus edulis</i>	*	X		X	X			X	X			X		
Aizoaceae	<i>Carpobrotus virescens</i>		X												
Amaranthaceae	<i>Ptilotus drummondii</i> var. <i>drummondii</i>			X											X
Amaranthaceae	<i>Ptilotus polystachyus</i>			X					X						
Anarthriaceae	<i>Lyginia imberbis</i>		X												X
Apiaceae	<i>Daucus glochidiatus</i>			X				X			X				X
Apiaceae	<i>Eryngium pinnatifidum</i>				X										X
Apiaceae	<i>Erynguim</i> sp.				X										
Apiaceae	<i>Foeniculum vulgare</i>	*													X
Apiaceae	<i>Trachymene pilosa</i>										X				X
Apocynaceae	<i>Gomphocarpus fruticosus</i>	*DP													X
Araceae	<i>Zantedeschia aethiopica</i>	*DP													X
Araliaceae	<i>Hydrocotyle hispidula</i>										X				X
Araliaceae	<i>Trachymene pilosa</i>		X	X	X				X	X	X				
Asparagaceae	<i>Acanthocarpus preissii</i>		X	X		X			X			X	X		
Asparagaceae	<i>Agave americana</i>	*													X
Asparagaceae	<i>Asparagus asparagoides</i>	*DP/WoNS		X			X			X	X		X		
Asparagaceae	<i>Lomandra caespitosa</i>		X	X		X		X		X					X
Asparagaceae	<i>Lomandra maritima</i>			X		X				X	X	X	X		X
Asparagaceae	<i>Lomandra preissii</i>							X							X
Asparagaceae	<i>Lomandra</i> sp.		X												
Asparagaceae	<i>Sowerbaea laxiflora</i>		X	X	X	X		X	X	X					
Asparagaceae	<i>Thysanotus arenarius</i>										X				X
Asparagaceae	<i>Thysanotus manglesianus</i>		X						X						X
Asparagaceae	<i>Thysanotus pallida</i>		X							X					

Family	Species	Status	VT01	VT02	VT03	VT04	VT05	VT06	VT07	VT08	VT09	VT10	VT11	VT14	Opp
Asparagaceae	<i>Thysanotus patersonii/maglesianus</i>		x			x				x	x				
Asparagaceae	<i>Thysanotus</i> sp.								x						
Asphodelaceae	<i>Trachyandra divaricata</i>	*										x	x		x
Asteraceae	<i>Arctotheca calendula</i>	*				x									
Asteraceae	<i>Brachyscome iberidifolia</i>														x
Asteraceae	<i>Conyza bonariensis</i>	*													x
Asteraceae	<i>Helichrysum luteoalbum</i>	*								x					
Asteraceae	<i>Hypochaeris glabra</i>	*	x	x	x	x			x	x	x				x
Asteraceae	<i>Lagenophora huegelii</i>		x	x	x			x	x						x
Asteraceae	<i>Leptorhynchus scaber</i>											x			x
Asteraceae	<i>Millotia tenuifolia</i> var. <i>tenuifolia</i>									x					x
Asteraceae	<i>Olearia axillaris</i>								x	x					x
Asteraceae	<i>Olearia rudis</i>														x
Asteraceae	<i>Osteospermum ecklonis</i>	*													x
Asteraceae	<i>Podolepis lessonii</i>		x												x
Asteraceae	<i>Podotheca gnaphalioides</i>		x		x			x	x	x	x				x
Asteraceae	<i>Quinetia urvillei</i>														x
Asteraceae	<i>Rhodanthe citrina</i>									x					x
Asteraceae	<i>Siloxerus humifusus</i>														x
Asteraceae	<i>Sonchus oleraceus</i>	*	x	x	x	x	x	x	x	x	x	x			x
Asteraceae	<i>Ursinia anthemoides</i>	*	x	x	x	x		x	x	x	x				
Asteraceae	<i>Waitzia suaveolens</i> var. <i>suaveolens</i>		x	x						x					x
Boraginaceae	<i>Echium plantagineum</i>	*DP													x
Brassicaceae	<i>Brassica tournefortii</i>	*			x					x	x				
Brassicaceae	<i>Heliophila pusilla</i>	*	x			x			x	x	x				x
Brassicaceae	<i>Raphanus raphanistrum</i>	*								x					x
Cactaceae	<i>Opuntia stricta</i>	*DP/WoNS													x
Campanulaceae	<i>Isotoma hypocrateriformis</i>														x

Family	Species	Status	VT01	VT02	VT03	VT04	VT05	VT06	VT07	VT08	VT09	VT10	VT11	VT14	Opp
Campanulaceae	<i>Wahlenbergia capensis</i>	*		X						X	X				X
Caryophyllaceae	<i>Caryophyllaceae sp.</i>									X					X
Caryophyllaceae	<i>Cerastium glomeratum</i>	*	X			X				X	X				
Caryophyllaceae	<i>Minuartia mediterranea</i>	*													X
Caryophyllaceae	<i>Petrorhagia dubia</i>	*		X		X				X		X			
Caryophyllaceae	<i>Silene gallica</i>	*	X												
Caryophyllaceae	<i>Silene nocturna</i>	*	X												X
Caryophyllaceae	<i>Silene noturna</i>	*	X												
Casuarinaceae	<i>Allocasuarina fraseriana</i>		X	X	X		X	X							
Casuarinaceae	<i>Allocasuarina humilis</i>		X	X	X		X			X					
Casuarinaceae	<i>Allocasuarine humilis</i>									X					
Celastraceae	<i>Tripterococcus brunonis</i>									X					X
Chenopodiaceae	<i>Rhagodia baccata</i>		X		X	X			X		X				
Colchicaceae	<i>Burchardia congesta</i>		X	X	X		X	X	X	X					
Convolvulaceae	<i>Cuscuta planiflora</i>	*	X								X				X
Crassulaceae	<i>Crassula alata</i>	*				X				X					
Crassulaceae	<i>Crassula colorata var. acuminata</i>		X		X				X	X	X				X
Crassulaceae	<i>Crassula decumbens var. decumbens</i>								X	X					X
Crassulaceae	<i>Crassula glomerata</i>	*								X	X	X			X
Cucurbitaceae	<i>Cucumis myriocarpus</i>	*													X
Cyperaceae	<i>Isolepis marginata</i>					X		X		X					X
Cyperaceae	<i>Lepidosperma ?calcicola</i>		X						X	X	X				X
Cyperaceae	<i>Lepidosperma ?pubisquameum</i>						X								
Cyperaceae	<i>Lepidosperma calcicola</i>			X						X		X	X		X
Cyperaceae	<i>Lepidosperma sp.</i>			X		X					X	X			X
Cyperaceae	<i>Mesomalaena pseudostygia</i>		X	X	X	X	X	X	X	X	X		X		
Cyperaceae	<i>Schoenus sp. (sterile)</i>		X												
Cyperaceae	<i>Tetraria octandra</i>								X			X			X

Family	Species	Status	VT01	VT02	VT03	VT04	VT05	VT06	VT07	VT08	VT09	VT10	VT11	VT14	Opp
Dasygongonaceae	<i>Calectasia narragara</i>		x												x
Dilleniaceae	<i>Hibbertia hypericoides</i>		x	x	x	x	x	x	x	x	x		x		x
Dilleniaceae	<i>Hibbertia racemosa</i>											x			x
Dilleniaceae	<i>Hibbertia spicata subsp. leptotheca</i>	P3								x	x				x
Droseraceae	<i>Drosera erythrorhiza</i>		x		x					x					
Droseraceae	<i>Drosera menziesii</i>		x												x
Droseraceae	<i>Drosera pallida</i>		x						x	x	x				x
Ericaceae	<i>Astroloma ciliatum</i>							x							x
Ericaceae	<i>Conostephium pendulum</i>		x		x										x
Ericaceae	<i>Conostephium preissii</i>									x					x
Ericaceae	<i>Leucopogon ?nutans</i>						x	x							
Ericaceae	<i>Leucopogon insularis</i>		x							x					x
Ericaceae	<i>Leucopogon nutans</i>				x	x					x				
Ericaceae	<i>Leucopogon parviflorus</i>					x				x	x		x		x
Ericaceae	<i>Leucopogon polymorphus</i>		x						x	x					x
Ericaceae	<i>Leucopogon propinquus</i>		x	x											x
Ericaceae	<i>Leucopogon</i> sp. Yanchep (M. Hislop 1986)	P3								x					x
Ericaceae	<i>Lysinema pentapetalum</i>									x					x
Euphorbiaceae	<i>Euphorbia peplus</i>	*											x		
Euphorbiaceae	<i>Euphorbia terracina</i>	*	x	x		x	x	x	x	x	x	x	x	x	x
Euphorbiaceae	<i>Ricinus communis</i>	*													x
Fabaceae	<i>Acacia baileyana</i>	*													x
Fabaceae	<i>Acacia benthamii</i>	P2													x
Fabaceae	<i>Acacia cochlearis</i>											x			
Fabaceae	<i>Acacia cyclops</i>					x				x	x				x
Fabaceae	<i>Acacia decurrens</i>	*				x									x
Fabaceae	<i>Acacia lasiocarpa</i> var. <i>lasiocarpa</i>					x				x	x	x			x

Family	Species	Status	VT01	VT02	VT03	VT04	VT05	VT06	VT07	VT08	VT09	VT10	VT11	VT14	Opp
Fabaceae	<i>Acacia longifolia</i> subsp. <i>longifolia</i>	*													X
Fabaceae	<i>Acacia longifolia</i> subsp. <i>sophorae</i>	*													X
Fabaceae	<i>Acacia pulchella</i> var. <i>glaberrima</i>		X	X	X		X	X	X	X	X				X
Fabaceae	<i>Acacia rostellifera</i>												X		
Fabaceae	<i>Acacia saligna</i>			X	X	X		X				X			
Fabaceae	<i>Acacia truncata</i>									X	X				X
Fabaceae	<i>Acacia willdenowiana</i>				X	X									X
Fabaceae	<i>Bossiaea eriocarpa</i>		X	X	X	X		X		X	X				X
Fabaceae	<i>Daviesia decurrens</i>														X
Fabaceae	<i>Daviesia divaricata</i> subsp. <i>divaricata</i>								X						X
Fabaceae	<i>Gastrolobium ?capitatum</i>										X				X
Fabaceae	<i>Gastrolobium linearifolium</i>		X		X					X					X
Fabaceae	<i>Gompholobium knightianum</i>							X							X
Fabaceae	<i>Gompholobium tomentosum</i>		X	X				X	X	X	X				X
Fabaceae	<i>Hardenbergia comptoniana</i>		X	X	X	X		X	X		X	X			
Fabaceae	<i>Hovea pungens</i>														X
Fabaceae	<i>Hovea trisperma</i>		X				X	X		X					X
Fabaceae	<i>Isotropis cuneifolia</i> subsp. <i>cuneifolia</i>														X
Fabaceae	<i>Jacksonia calcicola</i>		X						X	X	X				X
Fabaceae	<i>Jacksonia sternbergiana</i>		X	X						X					
Fabaceae	<i>Kennedia prostrata</i>		X			X					X	X			
Fabaceae	<i>Lupinus angustifolius</i>	*				X				X	X				X
Fabaceae	<i>Lupinus cosentinii</i>	*	X												
Fabaceae	<i>Mirbelia spinosa</i>		X												X
Fabaceae	<i>Sphaerolobium medium</i>									X	X				X
Fabaceae	<i>Templetonia retusa</i>									X	X				
Fabaceae	<i>Trifolium arvense</i>	*										X	X		X
Fabaceae	<i>Trifolium campestre</i>	*	X	X	X	X	X	X	X	X					X

Family	Species	Status	VT01	VT02	VT03	VT04	VT05	VT06	VT07	VT08	VT09	VT10	VT11	VT14	Opp
Fabaceae	<i>Trifolium dubium</i>	*	x	x		x				x	x				x
Fabaceae	<i>Trifolium sp.</i>	*	x												
Fabaceae	<i>Vicia sativa</i>	*				x									x
Geraniaceae	<i>Erodium botrys</i>	*								x					x
Geraniaceae	<i>Erodium cicutarium</i>	*									x				x
Geraniaceae	<i>Geranium molle</i>	*				x									x
Geraniaceae	<i>Pelargonium capitatum</i>	*	x	x	x	x		x		x	x			x	x
Goodeniaceae	<i>Goodeniaceae sp.</i>														x
Goodeniaceae	<i>Lechenaultia linarioides</i>		x			x				x	x				
Goodeniaceae	<i>Scaevola canescens</i>		x	x											x
Goodeniaceae	<i>Scaevola crassifolia</i>														x
Goodeniaceae	<i>Scaevola sp.</i>										x				
Haemodoraceae	<i>Anigozanthos humilis</i>										x				x
Haemodoraceae	<i>Conostylis aculeata</i>		x	x	x	x	x	x	x	x	x	x			x
Haemodoraceae	<i>Conostylis candicans subsp. candicans</i>		x		x	x					x	x			x
Haemodoraceae	<i>Conostylis setigera</i>		x												
Haemodoraceae	<i>Conostylis setosa</i>		x												x
Haemodoraceae	<i>Haemodorum laxum</i>		x												x
Haemodoraceae	<i>Haemodorum sp.</i>		x				x								
Haemodoraceae	<i>Haemodorum spicatum</i>														x
Haloragaceae	<i>Glischrocaryon angustifolium</i>														x
Hemerocallidaceae	<i>Corynotheca micrantha var. micrantha</i>		x	x	x										x
Hemerocallidaceae	<i>Dianella revoluta var. divaricata</i>		x	x		x	x	x	x	x	x				
Hemerocallidaceae	<i>Stypantra glauca</i>														x
Hemerocallidaceae	<i>Tricoryne elatior</i>					x				x	x				
Iridaceae	<i>Freesia alba x leichtlinii</i>	*													x
Iridaceae	<i>Gladiolus caryophyllaceus</i>	*	x	x	x	x			x	x	x				
Iridaceae	<i>Moraea flaccida</i>	*DP	x	x	x	x	x			x	x				

Family	Species	Status	VT01	VT02	VT03	VT04	VT05	VT06	VT07	VT08	VT09	VT10	VT11	VT14	Opp
Iridaceae	<i>Orthrosanthus laxus var. laxus</i>		x		x	x	x	x	x	x					x
Iridaceae	<i>Romulea rosea</i>	*				x	x	x			x	x			
Lamiaceae	<i>Hemiandra pungens</i>									x					x
Lauraceae	<i>Cassytha flava</i>														x
Lauraceae	<i>Cassytha racemosa forma racemosa</i>		x		x		x	x	x	x	x	x			x
Lauraceae	<i>Nuytsia floribunda</i>		x					x							x
Loganiaceae	<i>Phyllangium sp.</i>											x			
Montiaceae	<i>Calandrinia liniflora</i>									x					x
Montiaceae	<i>Calandrinia tholiformis</i>									x	x				x
Myrtaceae	<i>Baeckea sp. Limestone (N. Gibson & M.N. Lyons 1425)</i>	P1								x	x				x
Myrtaceae	<i>Calothamnus lateralis</i>														x
Myrtaceae	<i>Calothamnus quadrifidus subsp. quadrifidus</i>		x			x		x	x	x	x		x		x
Myrtaceae	<i>Calothamnus sanguineus</i>		x							x					
Myrtaceae	<i>Calytrix ?flavescens</i>														x
Myrtaceae	<i>Chamleaucium uncinatum</i>														x
Myrtaceae	<i>Corymbia calophylla</i>					x		x							
Myrtaceae	<i>Eremaea pauciflora</i>		x												x
Myrtaceae	<i>Eucalyptus camaldulensis</i>	#planted													x
Myrtaceae	<i>Eucalyptus decipiens</i>						x								x
Myrtaceae	<i>Eucalyptus foecunda</i>														x
Myrtaceae	<i>Eucalyptus gomphocephala</i>			x		x		x							x
Myrtaceae	<i>Eucalyptus marginata</i>				x			x							x
Myrtaceae	<i>Eucalyptus rudis</i>													x	
Myrtaceae	<i>Eucalyptus todtiana</i>		x												
Myrtaceae	<i>Leptospermum spinescens</i>														x
Myrtaceae	<i>Melaleuca cardiophylla</i>														x
Myrtaceae	<i>Melaleuca huegelii</i>										x				x

Family	Species	Status	VT01	VT02	VT03	VT04	VT05	VT06	VT07	VT08	VT09	VT10	VT11	VT14	Opp
Myrtaceae	<i>Melaleuca raphiophylla</i>													x	
Myrtaceae	<i>Melaleuca sp. Wanneroo</i> (G.J. Keighery 16705)	T													x
Myrtaceae	<i>Melaleuca systema</i>								x	x	x	x	x		x
Orchidaceae	? <i>Pterostylis sp.</i>							x							
Orchidaceae	<i>Caladenia arenicola</i>		x												x
Orchidaceae	<i>Caladenia flava</i>		x		x				x	x	x				x
Orchidaceae	<i>Caladenia latifolia</i>								x						x
Orchidaceae	<i>Caladenia longicauda subsp. calcigena</i>		x							x					
Orchidaceae	<i>Caladenia sp.</i>									x					
Orchidaceae	<i>Diuris corymbosa</i>		x		x				x						
Orchidaceae	<i>Elythranthera brunonis</i>								x						x
Orchidaceae	<i>Pterostylis sp. (flo. spent)</i>				x				x						x
Orchidaceae	<i>Pyrorchis nigricans</i>		x												
Orobanchaceae	<i>Parentucellia latifolia</i>	*													x
Oxalidaceae	<i>Oxalis pes-caprae</i>	*	x			x									
Papaveraceae	<i>Fumaria muralis</i>	*				x									
Phyllanthaceae	<i>Phyllanthus calycinus</i>		x	x	x	x			x	x	x	x			
Phyllanthaceae	<i>Poranthera microphylla</i>			x	x			x			x				x
Pinaceae	<i>Pinus pinaster</i>	*													x
Poaceae	<i>Aira caryophyllea</i>	*	x		x			x		x	x				x
Poaceae	<i>Aira cupaniana</i>	*	x												
Poaceae	<i>Arundo donax</i>	*													x
Poaceae	<i>Austrostipa compressa</i>		x									x			x
Poaceae	<i>Austrostipa flavescens</i>														x
Poaceae	<i>Avena barbata</i>	*	x	x		x	x			x	x	x	x		x
Poaceae	<i>Briza maxima</i>	*	x	x	x	x	x	x	x	x	x				
Poaceae	<i>Briza minor</i>	*	x		x			x		x	x				

Family	Species	Status	VT01	VT02	VT03	VT04	VT05	VT06	VT07	VT08	VT09	VT10	VT11	VT14	Opp
Poaceae	<i>Bromus diandrus</i>	*	x	x					x	x	x	x	x	x	x
Poaceae	<i>Ehrharta calycina</i>	*	x	x	x	x		x	x	x	x		x		x
Poaceae	<i>Ehrharta longiflora</i>	*	x		x	x		x		x	x			x	x
Poaceae	<i>Ehrharta sp.</i>	*	x												
Poaceae	<i>Eragrostis curvula</i>	*				x									x
Poaceae	<i>Lagurus ovatus</i>	*	x				x					x	x		x
Poaceae	<i>Lolium multiflorum</i>	*	x				x								x
Poaceae	<i>Lolium perenne</i>	*								x					x
Poaceae	<i>Lolium rigidum</i>	*	x							x	x				x
Poaceae	<i>Lolium sp.</i>	*	x							x		x	x		
Poaceae	<i>Neurachne alopecuroidea</i>									x					
Poaceae	<i>Poa poiformis</i>										x	x			x
Poaceae	<i>Poaceae sp.</i>				x	x				x	x				x
Poaceae	<i>Rytidosperma caespitosum</i>														x
Poaceae	<i>Rytidosperma setaceum</i>		x									x			x
Poaceae	<i>Vulpia myuros forma myuros</i>	*	x	x		x						x	x		x
Polygalaceae	<i>Comesperma confertum</i>										x				x
Polygalaceae	<i>Comesperma sp.</i>									x					
Primulaceae	<i>Lysimachia arvensis</i>	*	x	x	x	x	x	x	x	x	x	x			
Proteaceae	<i>Banksia attenuata</i>		x	x			x		x	x					
Proteaceae	<i>Banksia dallaneyi</i>		x			x	x		x	x	x		x		x
Proteaceae	<i>Banksia grandis</i>			x		x		x							
Proteaceae	<i>Banksia menziesii</i>		x		x		x		x						
Proteaceae	<i>Banksia sessilis</i>		x			x	x		x	x	x		x		
Proteaceae	<i>Conospermum triplinervium</i>								x						x
Proteaceae	<i>Grevillea preissii subsp. preissii</i>									x	x				x
Proteaceae	<i>Grevillea vestita subsp. vestita</i>			x											x
Proteaceae	<i>Hakea costata</i>								x						x

Family	Species	Status	VT01	VT02	VT03	VT04	VT05	VT06	VT07	VT08	VT09	VT10	VT11	VT14	Opp
Proteaceae	<i>Hakea lissocarpha</i>				x	x		x	x	x	x		x		x
Proteaceae	<i>Hakea prostrata</i>		x				x		x						
Proteaceae	<i>Hakea ruscifolia</i>														x
Proteaceae	<i>Hakea trifurcata</i>		x	x	x				x	x					x
Proteaceae	<i>Petrophile axillaris</i>									x					x
Proteaceae	<i>Petrophile brevifolia</i>		x												x
Proteaceae	<i>Petrophile linearis</i>		x	x	x			x							x
Proteaceae	<i>Petrophile macrostachya</i>		x	x	x		x		x	x					x
Proteaceae	<i>Stirlingia latifolia</i>		x					x							
Proteaceae	<i>Synaphea spinulosa subsp. spinulosa</i>		x												x
Ranunculaceae	<i>Clematis linearifolia</i>								x						
Ranunculaceae	<i>Clematis pubescens</i>					x									x
Restionaceae	<i>Desmocladus flexuosus</i>		x	x	x	x	x	x	x	x	x	x	x		x
Rhamnaceae	<i>Cryptandra multispina</i>									x					
Rhamnaceae	<i>Cryptandra mutila</i>									x	x				x
Rhamnaceae	<i>Cryptandra scoparia</i>														x
Rhamnaceae	<i>Spyridium globulosum</i>		x	x		x	x		x	x	x	x	x		x
Rhamnaceae	<i>Stenanthemum notiale subsp. chamelum</i>		x							x					x
Rhamnaceae	<i>Trymalium ledifolium var. ledifolium</i>		x								x				x
Rubiaceae	<i>Galium murale</i>	*				x					x				x
Rubiaceae	<i>Opercularia echinocephala</i>			x		x				x	x				
Rubiaceae	<i>Opercularia vaginata</i>		x								x				x
Rutaceae	<i>Philothea spicata</i>									x					x
Santalaceae	<i>Leptomeria pauciflora</i>									x					x
Santalaceae	<i>Santalum acuminatum</i>														x
Sapindaceae	<i>Diplopeltis huegelii subsp. huegelii</i>														x
Scrophulaceae	<i>Eremophila glabra</i>	#planted													x
Solanaceae	<i>Solanum linnaeanum</i>	*DP													x

Family	Species	Status	VT01	VT02	VT03	VT04	VT05	VT06	VT07	VT08	VT09	VT10	VT11	VT14	Opp
Solanaceae	<i>Solanum nigrum</i>	*									x				
Stylidiaceae	<i>Levenkookia stipitata</i>		x												x
Stylidiaceae	<i>Stylidium adpressum</i>														x
Stylidiaceae	<i>Stylidium androsaceum</i>				x										x
Stylidiaceae	<i>Stylidium brunonianum</i>														x
Stylidiaceae	<i>Stylidium calcaratum</i>		x					x		x					x
Stylidiaceae	<i>Stylidium maritimum</i>	P3								x	x				x
Stylidiaceae	<i>Stylidium rigidulum</i>														x
Stylidiaceae	<i>Stylidium scariosum</i>									x					x
Thymelaeaceae	<i>Pimelea argentea</i>														x
Thymelaeaceae	<i>Pimelea calcicola</i>	P3								x					x
Thymelaeaceae	<i>Pimelea sulphurea</i>														x
Thymelaeaceae	<i>Pimelea sylvestris</i>														x
Typhaceae	<i>Typha orientalis</i>													x	x
Verbenaceae	<i>Lantana camara</i>	*DP/WoNS													x
Violaceae	<i>Hybanthus calycinus</i>									x	x				x
Xanthorrhoeaceae	<i>Xanthorrhoea gracilis</i>		x	x			x	x		x					
Xanthorrhoeaceae	<i>Xanthorrhoea preissii</i>		x	x	x	x	x	x	x	x	x		x		x
Zamiaceae	<i>Macrozamia riedlei</i>		x	x	x	x	x	x							x
Total			121	61	58	70	37	52	62	120	91	36	27	7	210

Quadrat Data

Q1		
Type: Quadrat	Size: 10 x 10	Date: 17/09/2018
Vegetation Type: <i>Banksia sessilis</i> tall closed shrubland (VT07)		
Landform: Mid slope Slope: Gentle	Drainage: Good	
Soil Colour & Type: Brown Sand		
Vegetation Condition: Excellent		
Disturbances: Minimal		
Fire Age & Intensity: Old >5 years, no damage		
Bare Ground: <2%	Humus/Litter: Moderate	Wood Litter: Moderate



Taxon	Status	% cover	Height (m)
<i>Conospermum triplinervium</i>		<10%	1.7
<i>Dianella revoluta</i> var. <i>divaricata</i>		<2%T	1.6
<i>Acacia pulchella</i> var. <i>glaberrima</i>		<10%	1.5
<i>Calothamnus quadrifidus</i> subsp. <i>quadrifidus</i>		<10%	1.5
<i>Hakea prostrata</i>		30-10%	1.4
<i>Hakea trifurcata</i>		<10%	1.4
<i>Mesomelaena pseudostygia</i>		30-10%	1.3
<i>Conostylis aculeata</i>		<10%	0.6
<i>Gladiolus caryophyllaceus</i>	*	<2%T	0.6

Taxon	Status	% cover	Height (m)
<i>Jacksonia calcicola</i>		<2%N	0.5
<i>Phyllanthus calycinus</i>		<2%T	0.5
<i>Caladenia flava</i>		<2%N	0.4
<i>Gompholobium tomentosum</i>		<2%T	0.4
<i>Banksia sessilis</i>		<10%	0.3
<i>Tetraria octandra</i>		<2%T	0.3
<i>Desmocladius flexuosus</i>		<2%T	0.3
<i>Melaleuca systema</i>		30-10%	0.2
<i>Ursinia anthemoides</i>	*	<2%N	0.2
<i>Pterostylis</i> sp. (flo. spent)		<2%T	0.2
<i>Heliophila pusilla</i>	*	<2%N	0.1
<i>Sonchus oleraceus</i>	*	<2%N	0.1
<i>Briza maxima</i>	*	<2%T	0.1
<i>Podotheca gnaphalioides</i>		<2%T	0.1
<i>Drosera pallida</i>		<2%T	cr
<i>Hardenbergia comptoniana</i>		<2%T	cr
<i>Thysanotus manglesianus</i>		<2%T	cr
<i>Thysanotus</i> sp.		<2%T	cr

Q2		
Type: Quadrat	Size: 10 x 10	Date: 17/09/2018
Vegetation Type: <i>Banksia sessilis</i> tall closed shrubland (VT07)		
Landform: Upper slope Slope: Gentle	Drainage: Good	
Soil Colour & Type: Brown Sand		
Vegetation Condition: Excellent		
Disturbances: Weeds		
Fire Age & Intensity: Old >5 years, no damage		
Bare Ground: <2%	Humus/Litter: Moderate	Wood Litter: Moderate



Taxon	Status	% cover	Height (m)
<i>Banksia attenuata</i>		<10%	2.6
<i>Banksia sessilis</i>		70-30%	2.2
<i>Melaleuca systema</i>		30-10%	2
<i>Hakea trifurcata</i>		<10%	1.8
<i>Calothamnus quadrifidus</i> subsp. <i>quadrifidus</i>		70-30%	1.7
<i>Acacia pulchella</i> var. <i>glaberrima</i>		<10%	1.6
<i>Spyridium globulosum</i>		<10%	1.6
<i>Hibbertia hypericoides</i>		30-10%	1.2
<i>Gladiolus caryophyllaceus</i>	*	<2%N	1.2
<i>Diuris corymbosa</i>		<2%N	0.8
<i>Ehrharta calycina</i>	*	<2%N	0.8

Taxon	Status	% cover	Height (m)
<i>Euphorbia terracina</i>	*	<2%T	0.5
<i>Conostylis aculeata</i>		<10%	0.3
<i>Phyllanthus calycinus</i>		<2%T	0.3
<i>Sonchus oleraceus</i>	*	<2%T	0.3
<i>Desmocladius flexuosus</i>		<10%	0.2
<i>Caladenia flava</i>		<2%N	0.2
<i>Bromus diandrus</i>	*	<10%	0.1
<i>Sonchus oleraceus</i>	*	<2%N	0.1
<i>Ursinia anthemoides</i>	*	<2%N	0.1
<i>Briza maxima</i>	*	<2%T	0.1
<i>Hypochoeris glabra</i>	*	<2%N	0
<i>Thysanotus manglesianus</i>		<2%T	0
<i>Drosera pallida</i>		<2%N	cr
<i>Cassytha racemosa</i> forma <i>racemosa</i>		<2%T	cr
<i>Clematis linearifolia</i>		<2%T	cr
<i>Hardenbergia comptoniana</i>		<2%T	cr

Q3		
Type: Quadrat	Size: 10 x 10	Date: 17/09/2018
Vegetation Type: <i>Banksia</i> low woodland (VT01)		
Landform: Plain Slope: Negligible	Drainage: Good	
Soil Colour & Type: Brown Sand		
Vegetation Condition: Excellent		
Disturbances: Minimal, some weeds		
Fire Age & Intensity: Old >5 years, few trees killed		
Bare Ground: 2-5%	Humus/Litter: Sparse	Wood Litter: Moderate



Taxon	Status	% cover	Height (m)
<i>Allocasuarina fraseriana</i>		<10%	6.5
<i>Eucalyptus tottiana</i>		<10%	5
<i>Banksia attenuata</i>		<10%	4
<i>Hakea prostrata</i>		<10%	2
<i>Hakea trifurcata</i>		<10%	2
<i>Acacia pulchella</i> var. <i>glaberrima</i>		30-10%	1.6
<i>Xanthorrhoea preissii</i>		30-10%	1.6
<i>Allocasuarina humilis</i>		30-10%	1.4
<i>Ehrharta calycina</i>	*	<2%T	0.8
<i>Mesomelaena pseudostygia</i>		70-30%	0.8
<i>Gladiolus caryophyllaceus</i>	*	<2%T	0.7

Taxon	Status	% cover	Height (m)
<i>Eremaea pauciflora</i>		<10%	0.6
<i>Petrophile linearis</i>		<2%T	0.6
<i>Burchardia congesta</i>		<2%N	0.5
<i>Gastrolobium linearifolium</i>		<2%T	0.5
<i>Moraea flaccida</i>	*DP	<2%T	0.5
<i>Conostylis aculeata</i>		<10%	0.4
<i>Petrophile macrostachya</i>		<10%	0.4
<i>Synaphea spinulosa</i> subsp. <i>spinulosa</i>		<10%	0.4
<i>Desmocladius flexuosus</i>		<2%T	0.4
<i>Dianella revoluta</i> var. <i>divaricata</i>		<2%T	0.4
<i>Bossiaea eriocarpa</i>		<10%	0.3
<i>Sowerbaea laxiflora</i>		<2%N	0.3
<i>Gompholobium tomentosum</i>		<2%T	0.3
<i>Lomandra caespitosa</i>		<2%T	0.3
<i>Lagenophora huegelii</i>		<2%N	0.2
<i>Ursinia anthemoides</i>	*	<2%N	0.2
<i>Calectasia narragara</i>		<2%T	0.2
<i>Leucopogon propinquus</i>		<2%T	0.2
<i>Lyginia imberbis</i>		<10%	0.1
<i>Briza maxima</i>	*	<2%N	0.1
<i>Heliophila pusilla</i>	*	<2%N	0.1
<i>Lysimachia arvensis</i>	*	<2%N	0.1
<i>Lagenophora huegelii</i>		<2%T	0.1
<i>Scaevola canescens</i>		<2%T	0.1
<i>Trifolium campestre</i>	*	<2%T	0.1
<i>Drosera erythrorhiza</i>		<2%N	0
<i>Hardenbergia comptoniana</i>		<2%T	cr
<i>Thysanotus</i> sp.		<2%T	cr

Q4		
Type: Quadrat	Size: 10 x 10	Date: 17/09/2018
Vegetation Type: Mixed low heathland (VT08)		
Landform: Plain Slope: Negligible	Drainage: Good	
Soil Colour & Type: Brown Sand		
Vegetation Condition: Very Good		
Disturbances: Weeds, tracks nearby		
Fire Age & Intensity: Nil, no damage		
Bare Ground: 2-5%	Humus/Litter: Sparse	Wood Litter: Moderate



Taxon	Status	% cover	Height (m)
<i>Xanthorrhoea preissii</i>		70-30%	2
<i>Hakea trifurcata</i>		<10%	1.6
<i>Acacia lasiocarpa</i> var. <i>lasiocarpa</i>		30-10%	1.1
<i>Raphanus raphanistrum</i>	*	<2%T	1
<i>Melaleuca systema</i>		70-30%	1
<i>Grevillea preissii</i> subsp. <i>preissii</i>		30-10%	0.8
<i>Jacksonia calcicola</i>		<10%	0.6
<i>Mesomelaena pseudostygia</i>		<10%	0.5
<i>Leucopogon parviflorus</i>		<2%T	0.5
<i>Lomandra maritima</i>		<10%	0.4
<i>Ursinia anthemoides</i>	*	<2%N	0.4

Taxon	Status	% cover	Height (m)
<i>Hybanthus calycinus</i>		<2%T	0.4
<i>Bossiaea eriocarpa</i>		<10%	0.3
<i>Conostylis aculeata</i>		<2%T	0.3
<i>Gladiolus caryophyllaceus</i>	*	<2%T	0.3
<i>Banksia dallanneyi</i>		30-10%	0.2
<i>Desmocladus flexuosus</i>		30-10%	0.2
<i>Caladenia flava</i>		<2%T	0.2
<i>Caladenia longicauda</i> subsp. <i>calcigena</i>		<2%T	0.2
<i>Sowerbaea laxiflora</i>		<2%T	0.2
<i>Briza maxima</i>	*	<2%N	0.1
<i>Heliophila pusilla</i>	*	<2%N	0.1
<i>Lysimachia arvensis</i>	*	<2%N	0.1
<i>Drosera erythrorhiza</i>		<2%N	0
<i>Hypochaeris glabra</i>	*	<2%T	0
<i>Thysanotus</i> sp.		<2%T	cr

Q5		
Type: Quadrat	Size: 10 x 10	Date: 18/09/2018
Vegetation Type: Mixed low heathland (VT08)		
Landform: Mid slope Slope: Gentle	Drainage: Good	
Soil Colour & Type: Brown Sand		
Vegetation Condition: Excellent		
Disturbances: Weeds		
Fire Age & Intensity: Nil, no damage		
Bare Ground: 2-5%	Humus/Litter: Sparse	Wood Litter: Moderate



Taxon	Status	% cover	Height (m)
<i>Xanthorrhoea preissii</i>		30-10%	2
<i>Hakea trifurcata</i>		<2%T	1.8
<i>Calothamnus quadrifidus</i> subsp. <i>quadrifidus</i>		100-70%	1.6
<i>Banksia sessilis</i>		<10%	1.6
<i>Gladiolus caryophyllaceus</i>	*	<2%T	1.4
<i>Melaleuca systema</i>		70-30%	1.4
<i>Acacia lasiocarpa</i> var. <i>lasiocarpa</i>		30-10%	1
<i>Hibbertia hypericoides</i>		70-30%	0.9
<i>Dianella revoluta</i> var. <i>divaricata</i>		<2%T	0.8
<i>Mesomelaena pseudostygia</i>		<10%	0.5
<i>Conostylis aculeata</i>		<2%T	0.4

Taxon	Status	% cover	Height (m)
<i>Jacksonia calcicola</i>		<2%T	0.4
<i>Moraea flaccida</i>	*DP	<2%T	0.4
<i>Hovea trisperma</i>		<2%T	0.3
<i>Lomandra maritima</i>		<2%T	0.3
<i>Banksia dallanneyi</i>		<10%	0.2
<i>Desmocladius flexuosus</i>		<10%	0.2
Poaceae sp.		<2%N	0.2
<i>Hybanthus calycinus</i>		<2%T	0.2
<i>Heliophila pusilla</i>	*	<2%N	0.1
<i>Lysimachia arvensis</i>	*	<2%N	0.1
<i>Ursinia anthemoides</i>	*	<2%N	0.1
<i>Drosera erythrorhiza</i>		<2%N	0
<i>Hypochaeris glabra</i>	*	<2%T	0

Q6		
Type: Quadrat	Size: 10 x 10	Date: 18/09/2018
Vegetation Type: Mixed low heathland (VT08)		
Landform: Mid slope Slope: Gentle	Drainage: Good	
Soil Colour & Type: Brown Sand		
Vegetation Condition: Excellent		
Disturbances: weeds, rabbits, minimal		
Fire Age & Intensity: Old >5 years, minor impact		
Bare Ground: 2-5%	Humus/Litter: Sparse	Wood Litter: Sparse



Taxon	Status	% cover	Height (m)
<i>Xanthorrhoea preissii</i>		30-10%	2
<i>Calothamnus quadrifidus</i> subsp. <i>quadrifidus</i>		30-10%	1.5
<i>Acacia pulchella</i> var. <i>glaberrima</i>		<10%	1.4
<i>Melaleuca systema</i>		70-30%	1.4
<i>Allocasuarina humilis</i>		<10%	1.1
<i>Leucopogon polymorphus</i>		30-10%	1
<i>Leucopogon</i> sp. Yanchep	P3	30-10%	1
<i>Gladiolus caryophyllaceus</i>	*	<2%T	0.8
<i>Hibbertia hypericoides</i>		70-30%	0.8
<i>Burchardia congesta</i>		<2%T	0.7
<i>Calothamnus sanguineus</i>		<10%	0.6

Taxon	Status	% cover	Height (m)
<i>Conostylis aculeata</i>		<2%T	0.6
<i>Dianella revoluta</i> var. <i>divaricata</i>		<2%T	0.6
<i>Jacksonia sternbergiana</i>		<2%T	0.6
<i>Mesomelaena pseudostygia</i>		<2%T	0.5
<i>Gompholobium tomentosum</i>		<2%T	0.3
<i>Banksia dallanneyi</i>		<10%	0.2
<i>Desmocladius flexuosus</i>		<10%	0.2
<i>Bossiaea eriocarpa</i>		<2%T	0.2
<i>Gastrolobium linearifolium</i>		<2%T	0.2
<i>Lomandra caespitosa</i>		<2%T	0.2
Caryophyllaceae sp.		<2%N	0.1
<i>Heliophila pusilla</i>	*	<2%N	0.1
<i>Hypochaeris glabra</i>	*	<2%N	0.1
<i>Lysimachia arvensis</i>	*	<2%N	0.1
<i>Rhodanthe citrina</i>		<2%N	0.1
<i>Trachymene pilosa</i>		<2%N	0.1
<i>Aira caryophyllea</i>	*	<2%T	0.1
<i>Caladenia flava</i>		<2%T	0.1
<i>Crassula glomerata</i>	*	<2%T	0.1
<i>Isolepis marginata</i>		<2%T	0.1
<i>Stylidium calcaratum</i>		<2%T	0.1

Q7

Type: Quadrat	Size: 10 x 10	Date: 18/09/2018
Vegetation Type: Mixed low heathland (VT08)		
Landform: Lower slope Slope: Gentle	Drainage: Good	
Soil Colour & Type: Grey Sand		
Vegetation Condition: Good		
Disturbances: Weeds		
Fire Age & Intensity: Old > 5 years, no damage		
Bare Ground: 2-5%	Humus/Litter: Sparse	Wood Litter: Moderate



Taxon	Status	% Cover	Height (m)
<i>Xanthorrhoea preissii</i>		30-10%	2.3
<i>Banksia sessilis</i>		70-30%	2.1
<i>Acacia pulchella</i> var. <i>glaberrima</i>		<10%	1.5
<i>Melaleuca systena</i>		30-10%	1.4
<i>Calothamnus quadrifidus</i> subsp. <i>quadrifidus</i>		<10%	1.4
<i>Hibbertia hypericoides</i>		70-30%	1
<i>Hakea trifurcata</i>		<10%	0.9
<i>Euphorbia terracina</i>	*	<10%	0.8
<i>Mesomelaena pseudostygia</i>		<10%	0.5
<i>Lolium rigidum</i>	*	30-10%	0.4
<i>Moraea flaccida</i>	*DP	<2%T	0.4

Taxon	Status	% Cover	Height (m)
<i>Lepidosperma ?calcicola</i>		<2%T	0.3
<i>Lupinus angustifolius</i>	*	<2%T	0.3
<i>Pelargonium capitatum</i>	*	<2%T	0.3
<i>Desmocladius flexuosus</i>		<2%N	0.2
<i>Erodium botrys</i>	*	<2%N	0.2
<i>Heliophila pusilla</i>	*	<2%N	0.2
<i>Banksia dallanneyi</i>		<2%T	0.2
<i>Carpobrotus edulis</i>	*	<2%T	0.2
<i>Ehrharta calycina</i>	*	<2%T	0.2
<i>Crassula colorata</i> var. <i>acuminata</i>		<2%N	0.1
<i>Crassula decumbens</i> var. <i>decumbens</i>		<2%N	0.1
<i>Hypochaeris glabra</i>	*	<2%N	0.1
<i>Lysimachia arvensis</i>	*	<2%T	0.1
<i>Ursinia anthemoides</i>	*	<2%T	0.1

Q8		
Type: Quadrat	Size: 10 x 10	Date: 18/09/2018
Vegetation Type: <i>Banksia</i> low woodland (VT01)		
Landform: Upper slope Slope: Gentle	Drainage: Good	
Soil Colour & Type: Grey Sand		
Vegetation Condition: Good		
Disturbances: Weeds and surrounding clearing		
Fire Age & Intensity: Old >5 years, minor impact		
Bare Ground: 2-5%	Humus/Litter: Sparse	Wood Litter: Moderate



Taxon	Status	% Cover	Height (m)
<i>Banksia attenuata</i>		30-10%	3
<i>Banksia sessilis</i>		<10%	2
<i>Calothamnus quadrifidus</i> subsp. <i>quadrifidus</i>		70-30%	2
<i>Acacia pulchella</i> var. <i>glaberrima</i>		30-10%	1.8
<i>Xanthorrhoea preissii</i>		<10%	1.6
<i>Hibbertia hypericoides</i>		100-70%	1.2
<i>Allocasuarina humilis</i>		<10%	1.2
<i>Euphorbia terracina</i>	*	<2%T	1.1
<i>Mesomelaena pseudostygia</i>		<10%	1
<i>Dianella revoluta</i> var. <i>divaricata</i>		<2%N	1
<i>Ehrharta calycina</i>	*	<2%N	1

Taxon	Status	% Cover	Height (m)
<i>Burchardia congesta</i>		<2%T	1
<i>Gladiolus caryophyllaceus</i>	*	<2%N	0.9
<i>Avena barbata</i>	*	<2%N	0.8
<i>Ehrharta longiflora</i>	*	<2%N	0.5
<i>Lepidosperma ?calvicola</i>		<2%T	0.5
<i>Sonchus oleraceus</i>	*	<2%T	0.5
<i>Conostylis aculeata</i>		<10%	0.4
<i>Lolium rigidum</i>	*	<10%	0.3
<i>Trymalium ledifolium</i> var. <i>ledifolium</i>		<2%N	0.3
<i>Ursinia anthemoides</i>	*	<2%N	0.2
<i>Briza maxima</i>	*	<2%T	0.2
<i>Lysimachia arvensis</i>	*	<10%	0.1
<i>Trifolium campestre</i>	*	<2%N	0.1
<i>Carpobrotus edulis</i>	*	<2%T	0.1
<i>Desmocladius flexuosus</i>		<2%T	0.1
<i>Oxalis pes-caprae</i>	*	<2%T	0.1
<i>Cassytha racemosa</i> forma <i>racemosa</i>		<2%N	cr
<i>Thysanotus manglesianus</i>		<2%N	cr
<i>Drosera pallida</i>		<2%T	cr

Q9		
Type: Quadrat	Size: 10 x 10	Date: 15/10/2018
Vegetation Type: <i>Melaleuca huegelii</i> / <i>M. systema</i> mid shrubland (VT09)		
Landform: Ridge	Drainage: Good	
Slope: Gentle		
Soil Colour & Type: Grey sand over limestone 31-70%		
Vegetation Condition: Degraded		
Disturbances: Weeds fire rubbish and rabbits		
Fire Age & Intensity: Moderate		
Bare Ground: 2-10%	Humus/Litter: Sparse	Wood Litter: Moderate



Taxon	Status	% Cover	Height (m)
<i>Melaleuca huegelii</i>		70-30%	2
<i>Leucopogon parviflorus</i>		<10%	1
<i>Melaleuca systema</i>		30-10%	0.7
<i>Scaevola</i> sp.		30-10%	0.5
<i>Ehrharta calycina</i>	*	<10%	0.5
<i>Hibbertia hypericoides</i>		<10%	0.5
<i>Lolium rigidum</i>	*	30-10%	0.4
<i>Sonchus oleraceus</i>	*	<2%T	0.4
<i>Templetonia retusa</i>		<2%T	0.4
<i>Opercularia vaginata</i>		30-10%	0.3

Taxon	Status	% Cover	Height (m)
<i>Acacia pulchella</i> var. <i>glaberrima</i>		<10%	0.3
<i>Anigozanthos humilis</i>		<2%T	0.3
<i>Gompholobium tomentosum</i>		<2%T	0.3
<i>Solanum nigrum</i>	*	<2%T	0.3
<i>Desmodium flexuosum</i>		30-10%	0.2
<i>Lepidosperma ?calcicola</i>		30-10%	0.2
<i>Podotheca gnaphalioides</i>		<10%	0.2
<i>Banksia dallanneyi</i>		<2%T	0.2
<i>Banksia sessilis</i>		<2%T	0.2
<i>Lupinus angustifolius</i>	*	<2%T	0.2
<i>Pelargonium capitatum</i>	*	<2%T	0.2
<i>Bromus diandrus</i>	*	70-30%	0.2
<i>Lysimachia arvensis</i>	*	<2%N	0.1
<i>Trachymene pilosa</i>		<2%N	0.1
<i>Trifolium dubium</i>	*	<2%N	0.1
<i>Crassula glomerata</i>	*	<2%T	0.1
<i>Drosera pallida</i>		<2%N	cr

Q10		
Type: Quadrat	Size: 10 x 10	Date: 15/10/2018
Vegetation Type: <i>Banksia</i> low woodland (VT01)		
Landform: Plain Slope: Negligible	Drainage: Good	
Soil Colour & Type: Grey Sand		
Vegetation Condition: Good		
Disturbances: Weeds, adjacent clearing		
Fire Age & Intensity: Old >5 years, minor impact		
Bare Ground: 5-10%	Humus/Litter: Sparse	Wood Litter: Moderate



Taxon	Status	% Cover	Height (m)
<i>Nuytsia floribunda</i>		<10%	4.5
<i>Banksia attenuata</i>		<10%	4
<i>Banksia menziesii</i>		<2%T	2.5
<i>Jacksonia sternbergiana</i>		<2%T	2.2
<i>Allocasuarina humilis</i>		<10%	2
<i>Acacia pulchella</i> var. <i>glaberrima</i>		<2%T	1.6
<i>Calothamnus quadrifidus</i> subsp. <i>quadrifidus</i>		<10%	1.4
<i>Petrophile macrostachya</i>		<10%	1
<i>Ehrharta calycina</i>	*	<2%N	1
<i>Xanthorrhoea preissii</i>		<2%T	1
<i>Hibbertia hypericoides</i>		<10%	1

Taxon	Status	% Cover	Height (m)
<i>Gladiolus caryophyllaceus</i>	*	<2%T	0.7
<i>Mesomelaena pseudostygia</i>		<10%	0.7
<i>Briza maxima</i>	*	<2%T	0.5
<i>Conostylis candicans</i> subsp. <i>candicans</i>		<2%T	0.4
<i>Burchardia congesta</i>		<2%N	0.3
<i>Diuris corymbosa</i>		<2%N	0.3
<i>Desmocladus flexuosus</i>		<2%T	0.3
<i>Gompholobium tomentosum</i>		<2%T	0.3
<i>Ehrharta longiflora</i>	*	<2%N	0.2
<i>Silene nocturna</i>	*	<2%N	0.2
<i>Ursinia anthemoides</i>	*	<2%N	0.2
<i>Sonchus oleraceus</i>	*	<2%T	0.2
<i>Aira caryophyllea</i>	*	<2%N	0.1
<i>Hypochaeris glabra</i>	*	<2%N	0.1
<i>Lysimachia arvensis</i>	*	<2%N	0.1
<i>Trachymene pilosa</i>		<2%N	0.1
<i>Aira caryophyllea</i>	*	<2%T	0.1
<i>Conostylis setigera</i>		<2%T	0.1
<i>Podotheca gnaphalioides</i>		<2%T	0.1
<i>Stylidium calcaratum</i>		<2%T	0.1
<i>Trifolium dubium</i>	*	<2%T	0.1
<i>Thysanotus manglesianus</i>		<2%T	cr

Q11

Type: Quadrat	Size: 10 x 10	Date: 15/10/2018
Vegetation Type: Jarrah tall woodland (VT03)		
Landform: Plain Slope: Gentle	Drainage: Good	
Soil Colour & Type: Grey Sand		
Vegetation Condition: Good		
Disturbances: Weeds and rubbish		
Fire Age & Intensity: Old, no damage		
Bare Ground: 2-10%	Humus/Litter: Plentiful	Wood Litter: Moderate



Q12		
Type: Quadrat	Size: 10 x 10	Date: 16/10/2018
Vegetation Type: Tuart/Banksia open woodland (VT02)		
Landform: Upper slope Slope: Gentle	Drainage: Good	
Soil Colour & Type: Brown Sand		
Vegetation Condition: Degraded		
Disturbances: Weeds		
Fire Age & Intensity: Old >5 years, minor impact		
Bare Ground: <2%	Humus/Litter: Plentiful	Wood Litter: Moderate

Q13		
Type: Quadrat	Size: 10 x 10	Date: 16/10/2018
Vegetation Type: Tuart/Banksia open woodland (VT02)		
Landform: Upper slope Slope: Gentle	Drainage: Good	
Soil Colour & Type: Grey Sand		
Vegetation Condition: Good		
Disturbances: Weeds		
Fire Age & Intensity: Old >5 years, minor impact		
Bare Ground: <2%	Humus/Litter: Moderate	Wood Litter: Moderate

Q14

Type: Quadrat	Size: 10 x 10	Date: 17/10/2018
Vegetation Type: <i>Melaleuca huegelii</i> / <i>M. systema</i> mid shrubland (VT09)		
Landform: Outcrop Slope: Gentle	Drainage: Good	
Soil Colour & Type: Brown Sand		
Vegetation Condition: Very Good		
Disturbances: Weeds		
Fire Age & Intensity: Old >5 years, no damage		
Bare Ground: <2%	Humus/Litter: Sparse	Wood Litter: Sparse



Q15

Type: Quadrat	Size: 10 x 10	Date: 17/10/2018
Vegetation Type: Mixed low heathland (VT08)		
Landform: Outcrop Slope: Gentle	Drainage: Good	
Soil Colour & Type: Brown Sand		
Vegetation Condition: Very Good		
Disturbances: Weeds		
Fire Age & Intensity: Old, no damage		
Bare Ground: 2-10%	Humus/Litter: Sparse	Wood Litter: Moderate



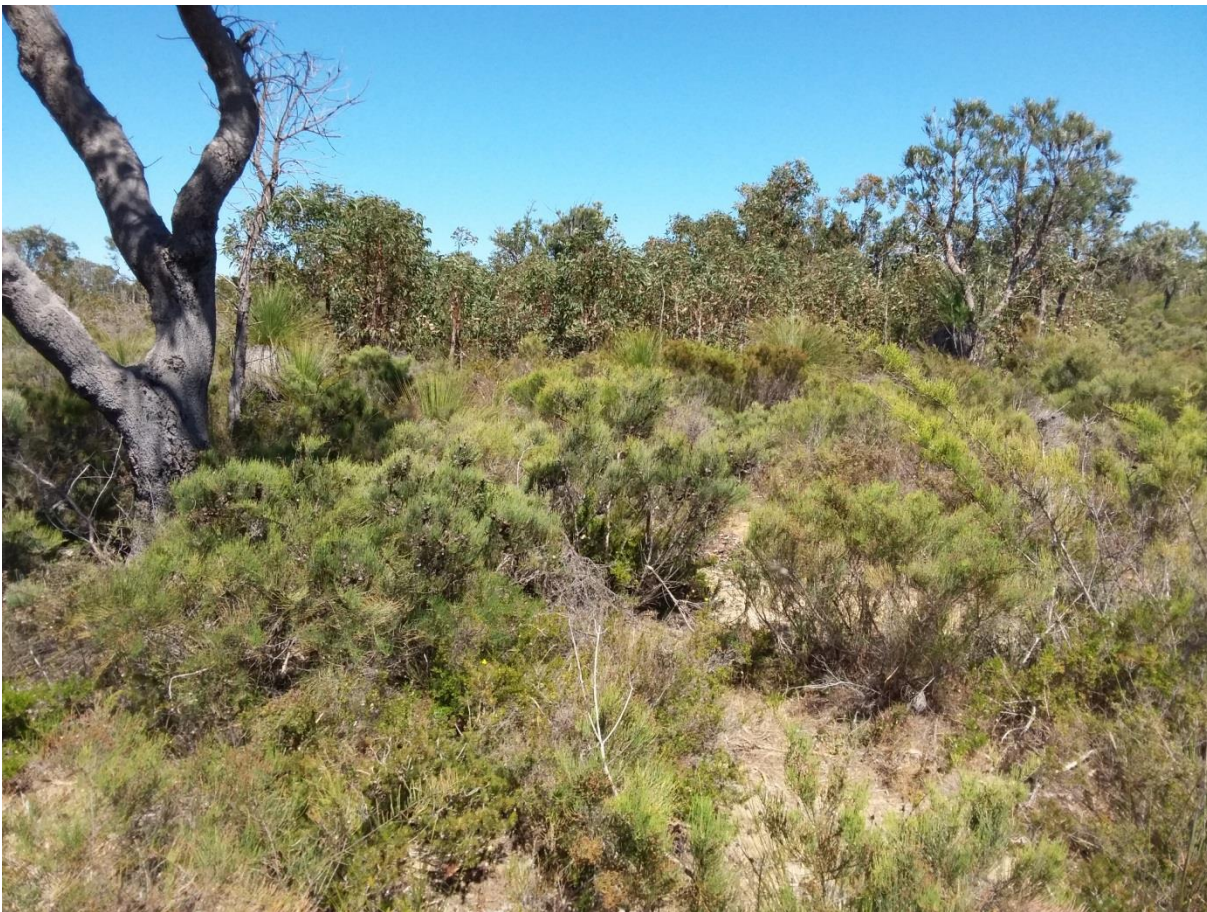
Q16

Type: Quadrat	Size: 10 x 10	Date: 5/11/2018
Vegetation Type: <i>Banksia</i> low woodland (VT01)		
Landform: Plain Slope: Gentle	Drainage: Good	
Soil Colour & Type: Brown Sand		
Vegetation Condition: Good		
Disturbances: Fire, weeds		
Fire Age & Intensity: Moderate 1-5 years, few trees killed		
Bare Ground: 2-10%	Humus/Litter: Moderate	Wood Litter: Moderate



Q17

Type: Quadrat	Size: 10 x 10	Date: 5/11/2018
Vegetation Type: <i>Banksia</i> low woodland (VT01)		
Landform: Plain Slope: Gentle	Drainage: Good	
Soil Colour & Type: Grey sand		
Vegetation Condition: Very Good		
Disturbances: weeds		
Fire Age & Intensity: Old, minor impact		
Bare Ground: 2-10%	Humus/Litter: Moderate	Wood Litter: Moderate



Q18

Type: Quadrat	Size: 10 x 10	Date: 17/09/2018
Vegetation Type: <i>Banksia</i> low woodland (VT01)		
Landform: Swale Slope: Gentle	Drainage: Good	
Soil Colour & Type: Yellow/grey Sand		
Vegetation Condition: Very Good		
Disturbances: Weeds		
Fire Age & Intensity: Old >5 years, minor impact		
Bare Ground: 2-10%	Humus/Litter: Sparse	Wood Litter: Sparse



Q19

Type: Quadrat	Size: 10 x 10	Date: 18/09/2018
Vegetation Type: <i>Banksia</i> low woodland (VT01)		
Landform: Upper slope Slope: Gentle	Drainage: Good	
Soil Colour & Type: Yellow/brown Sand		
Vegetation Condition: Very Good		
Disturbances: Weeds, rubbish		
Fire Age & Intensity: Old > 5 years, no damage		
Bare Ground: 2-10%	Humus/Litter: Sparse	Wood Litter: Sparse



Q20		
Type: Quadrat	Size: 10 x 10	Date: 18/09/2018
Vegetation Type: <i>Banksia sessilis</i> tall closed shrubland (VT07)		
Landform: Plain Slope: Negligible	Drainage: Good	
Soil Colour & Type: Brown Sand, occasional limestone 5%		
Vegetation Condition: Good		
Disturbances: Weeds and rubbish		
Fire Age & Intensity: Nil, no damage		
Bare Ground: 2-10%	Humus/Litter: Sparse	Wood Litter: Sparse



Q21

Type: Quadrat	Size: 10 x 10	Date: 18/09/2018
Vegetation Type: Tuart tall woodland (VT04)		
Landform: Plain Slope: Negligible	Drainage: Good	
Soil Colour & Type: Brown Sand		
Vegetation Condition: Good		
Disturbances: Rubbish, weeds		
Fire Age & Intensity: Old >5 year, minor impact		
Bare Ground: 2-10%	Humus/Litter: Sparse	Wood Litter: Sparse

