

Source & Notes  
Vegetation condition mapping and introduced taxa from Coffey (January 2015)  
Aerial imagery from Landgate (August 2014)

NorthLinkWA

coffey

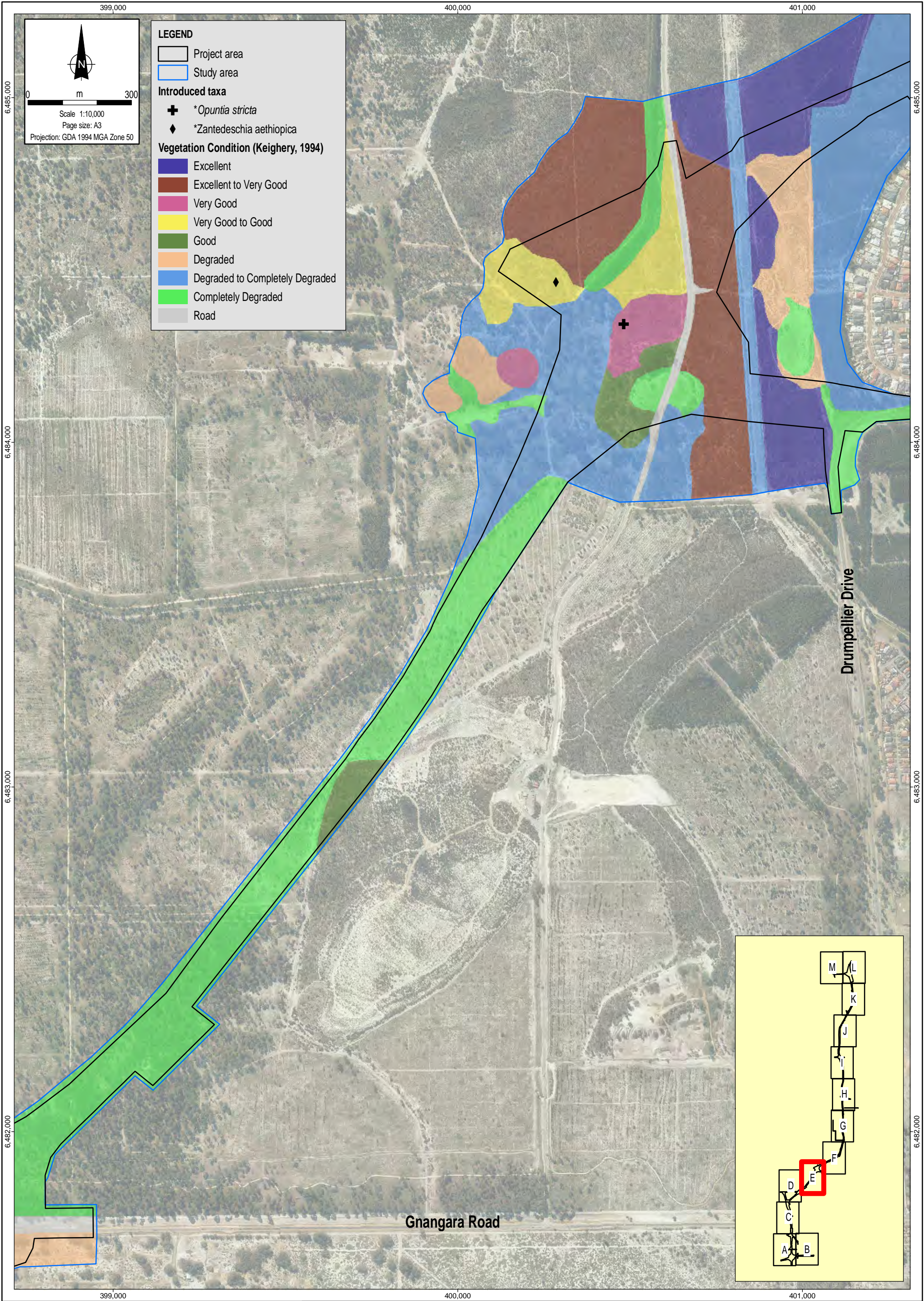
Date:  
24.03.2015  
MXT:  
4483AA\_23\_GIS002\_2  
File Name:  
4483AA\_23\_F009D\_GIS

Main Roads WA  
Level 2 Flora and Vegetation Assessment  
Perth-Darwin National Highway

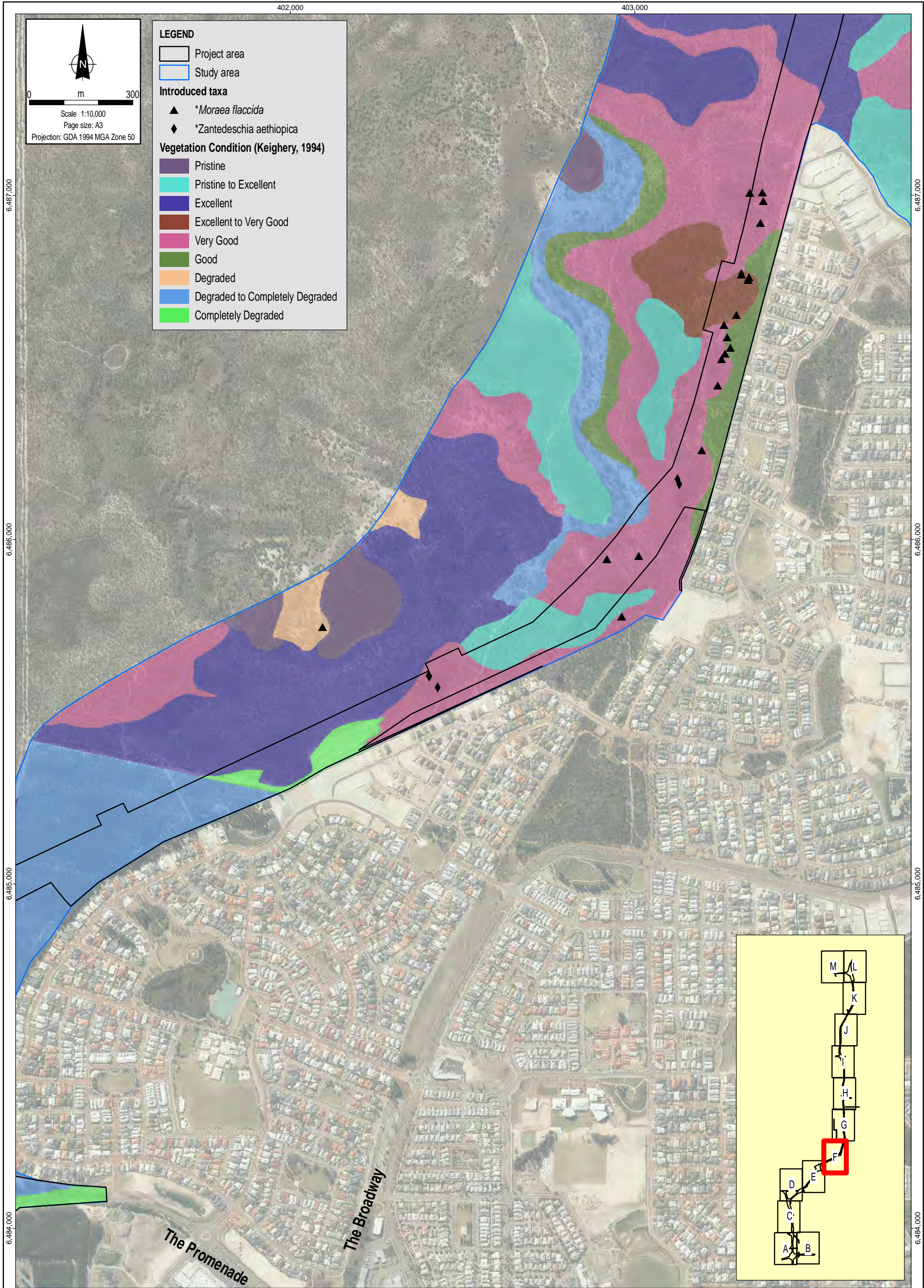
Vegetation condition and introduced taxa

Figure No:  
9D

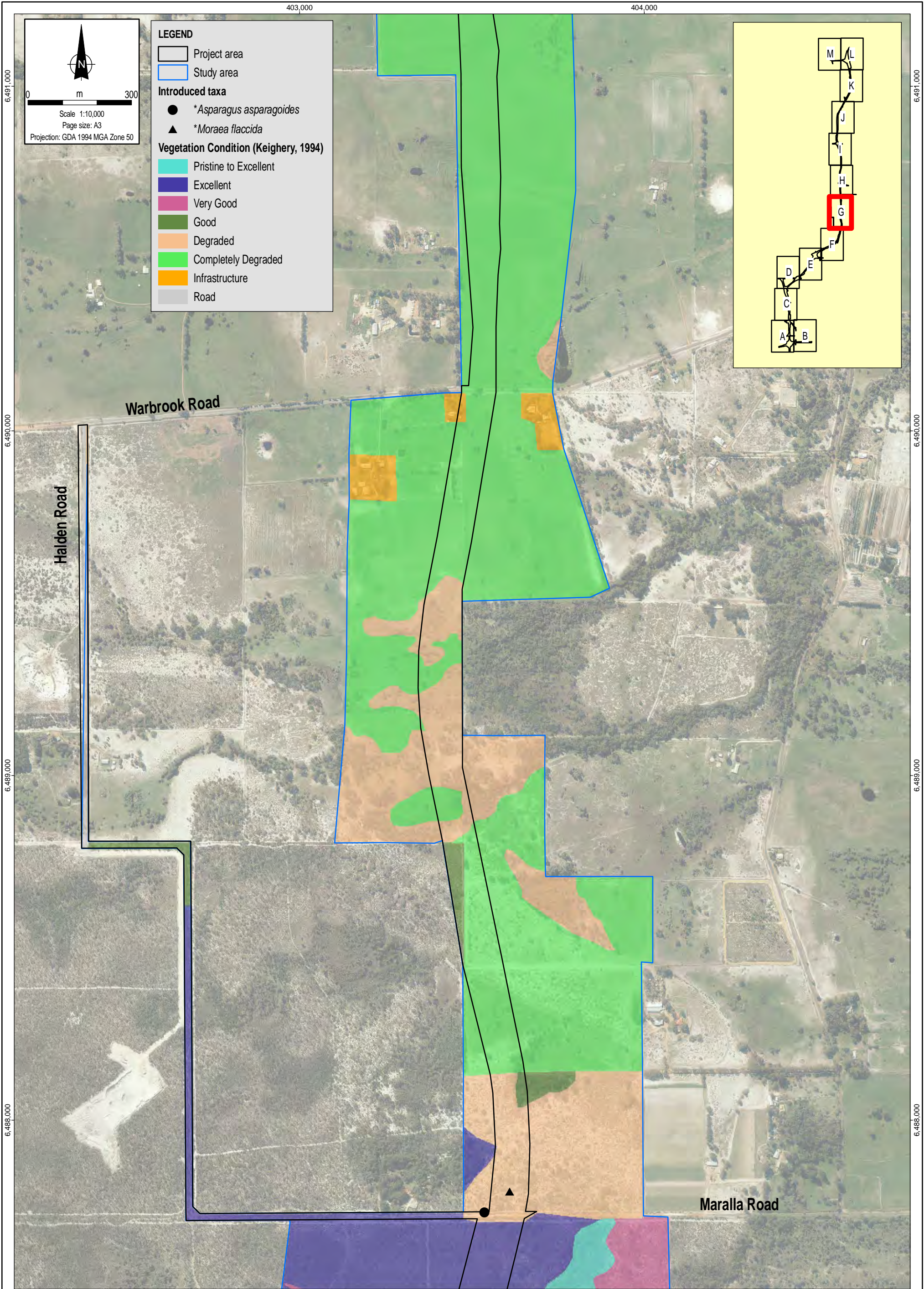




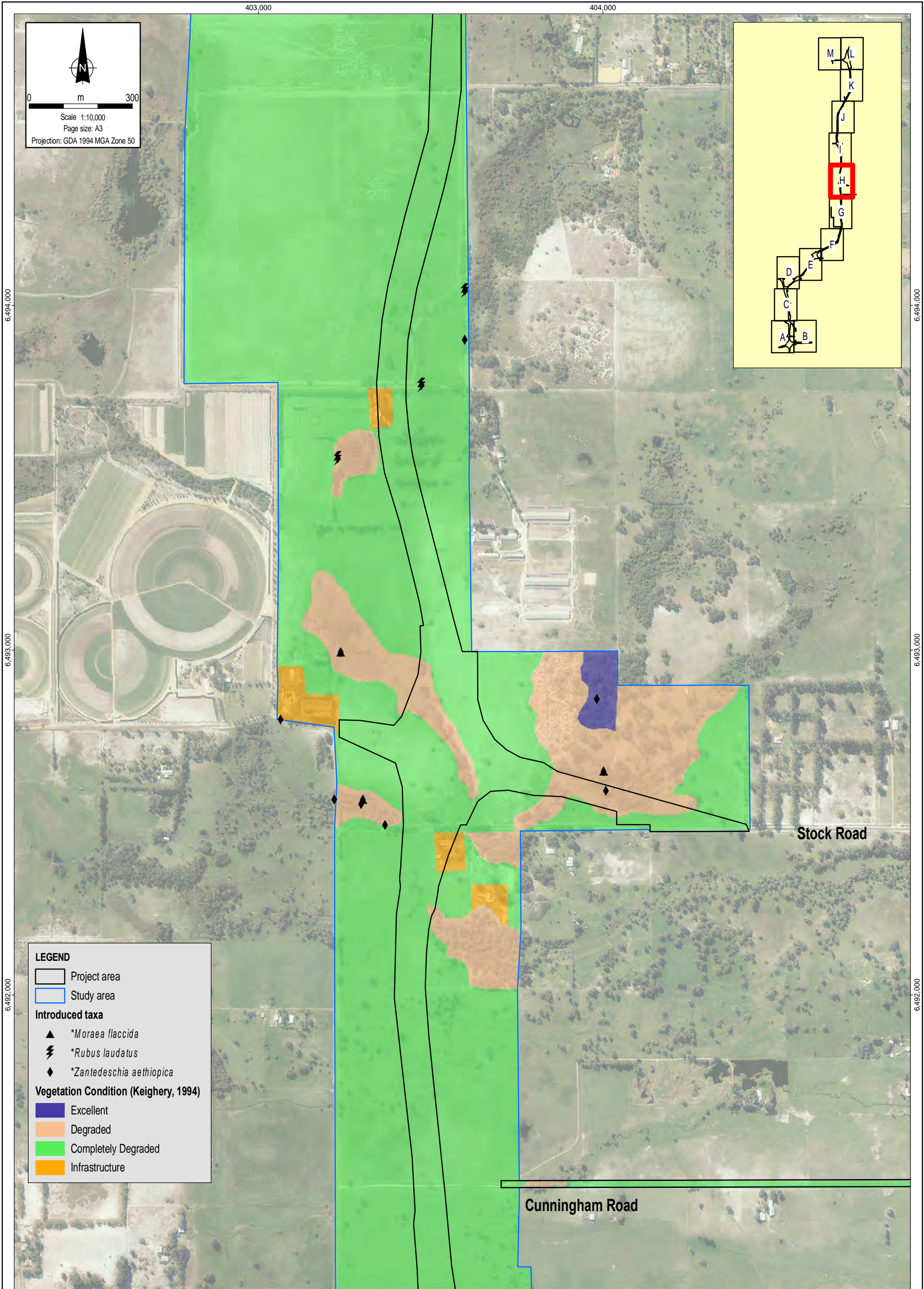




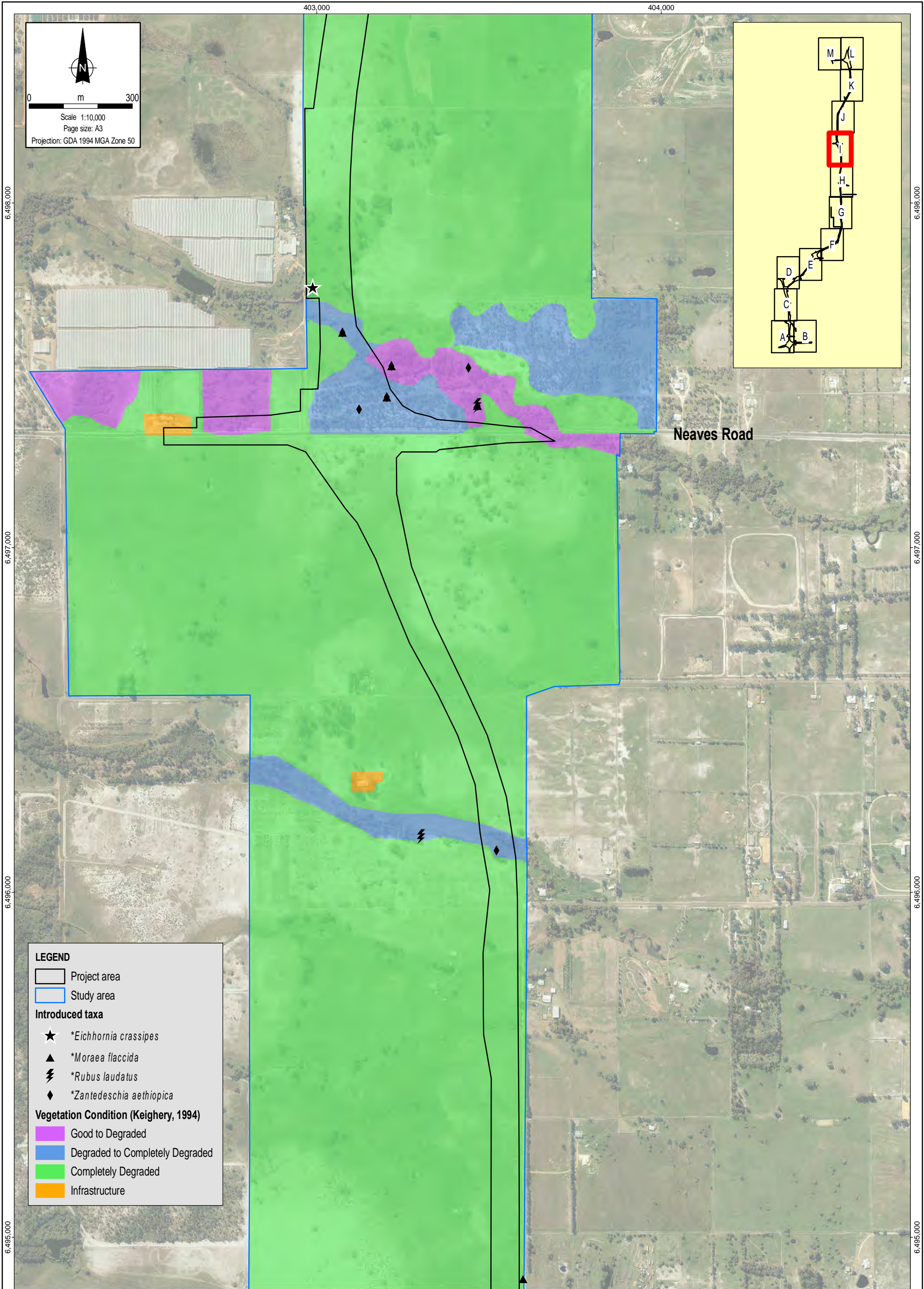




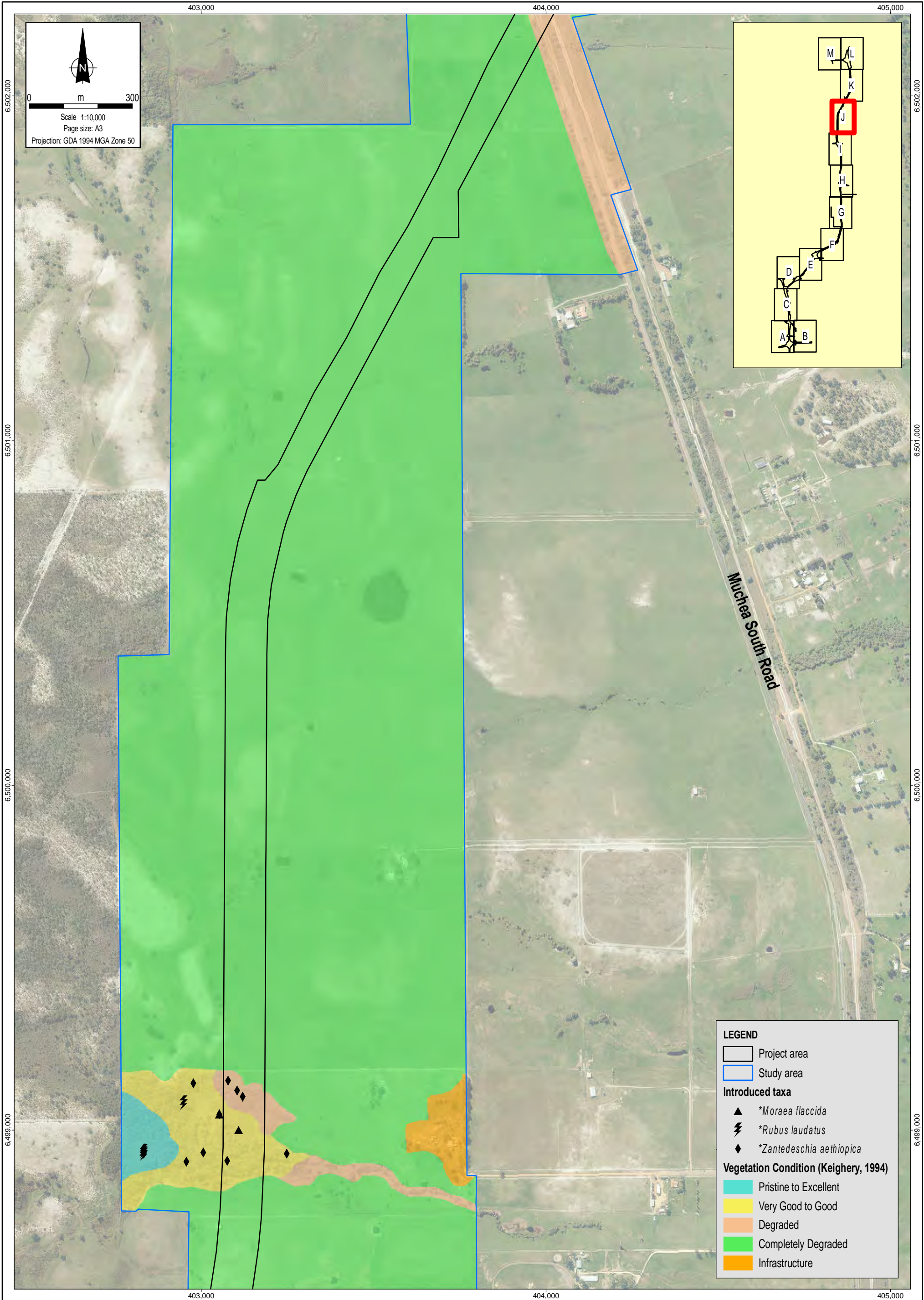




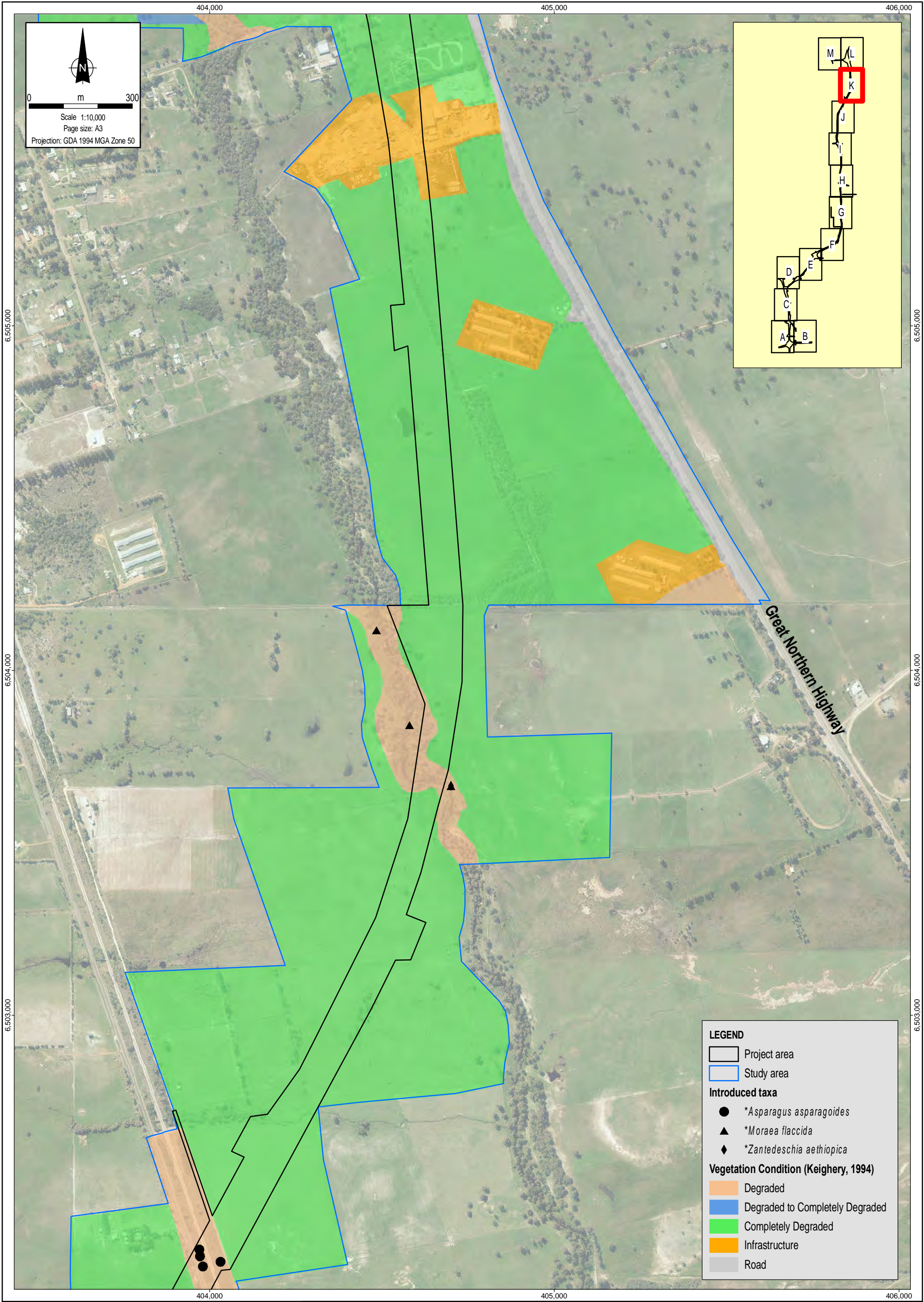




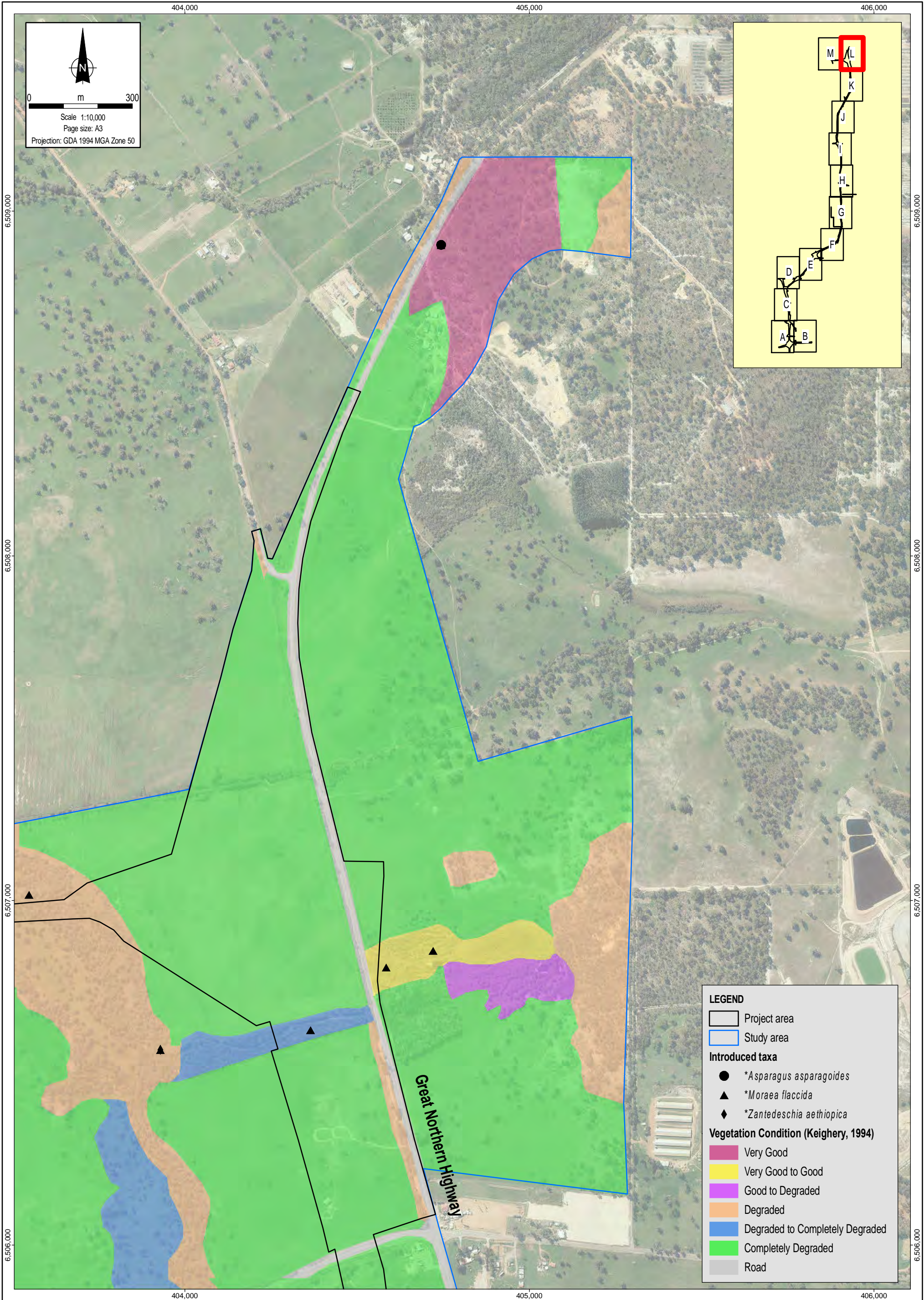




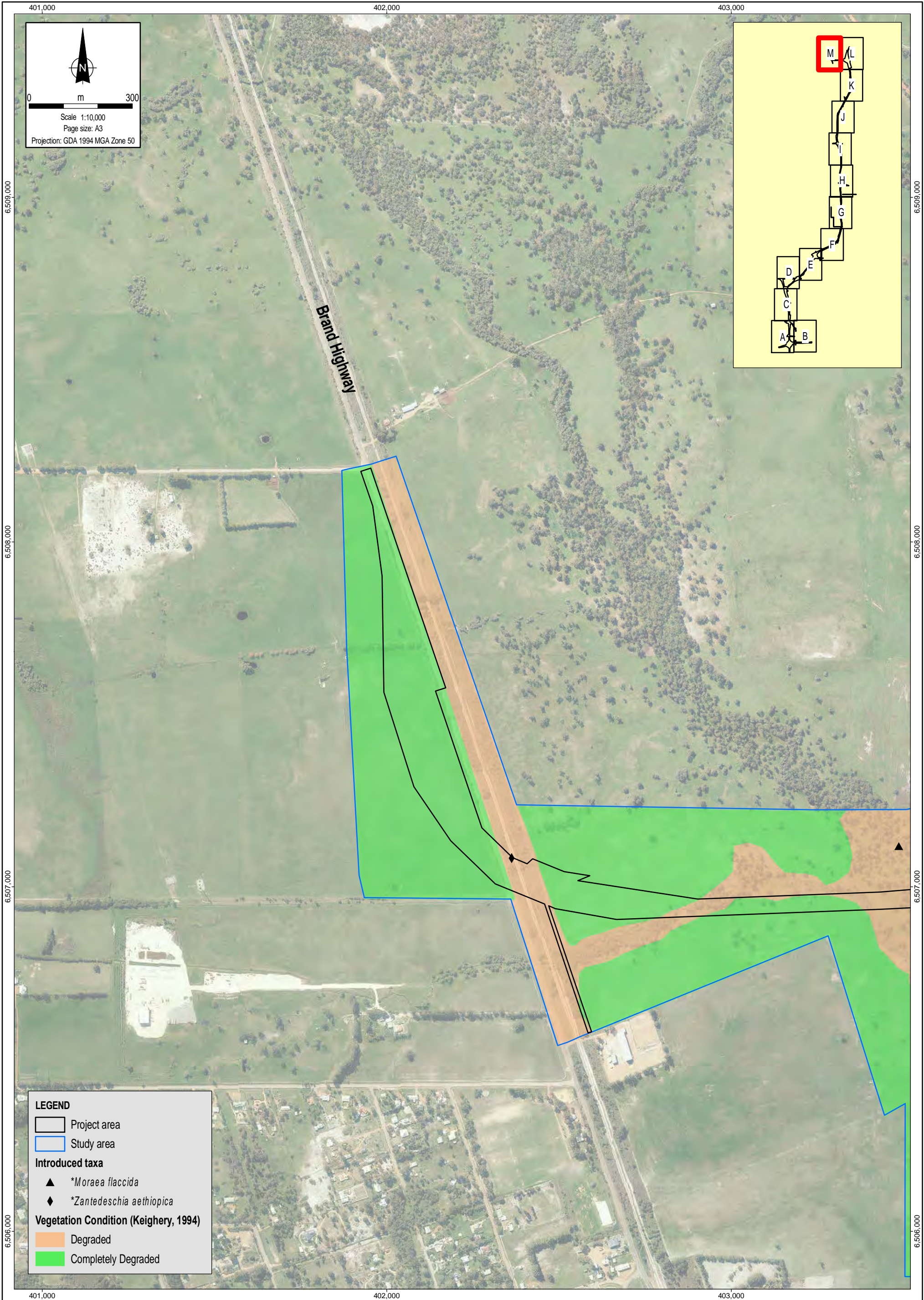




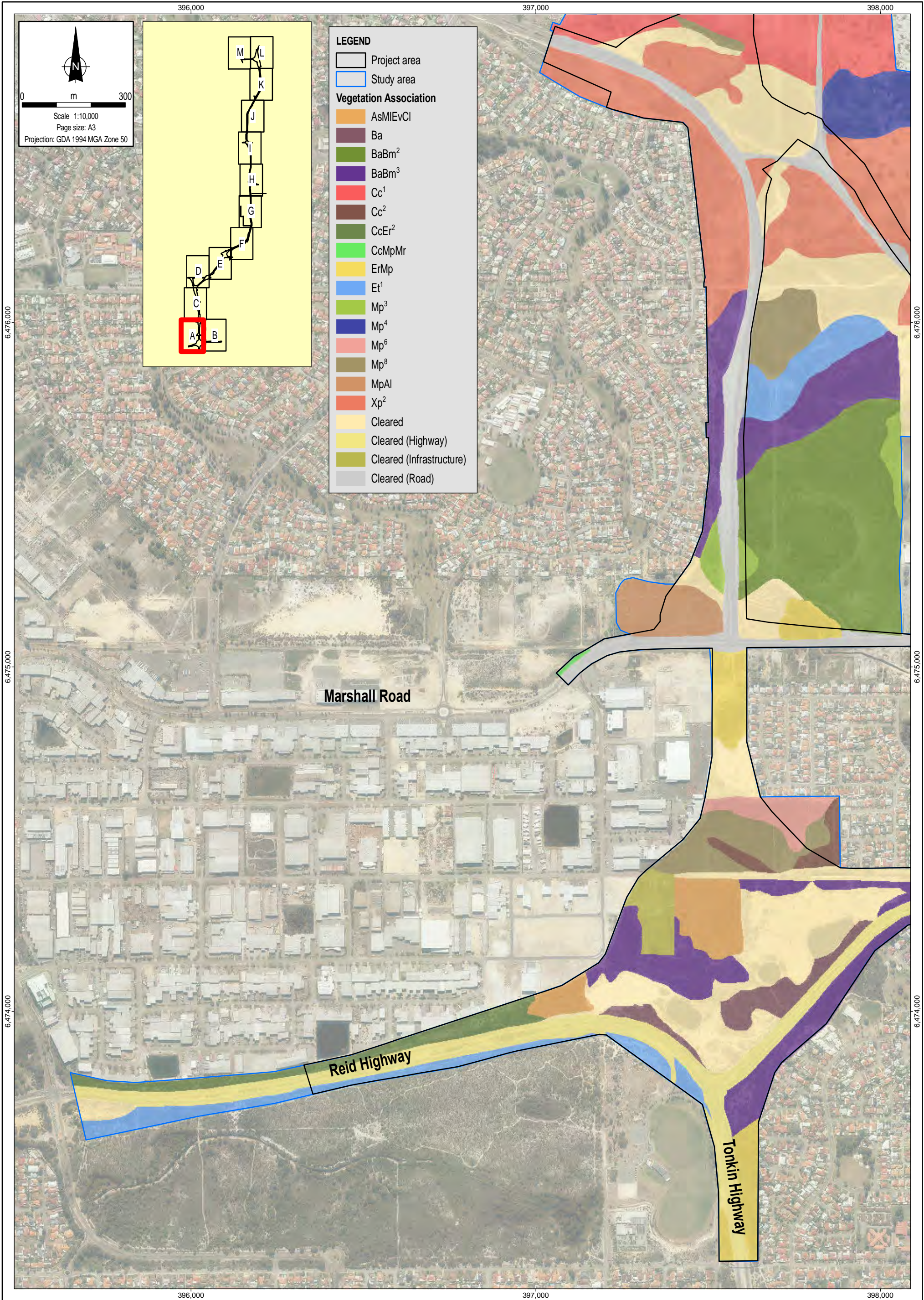












Source & Notes  
Vegetation association mapping from Coffey (January 2015)  
Aerial imagery from Landgate (August 2014)

NorthLinkWA

coffey

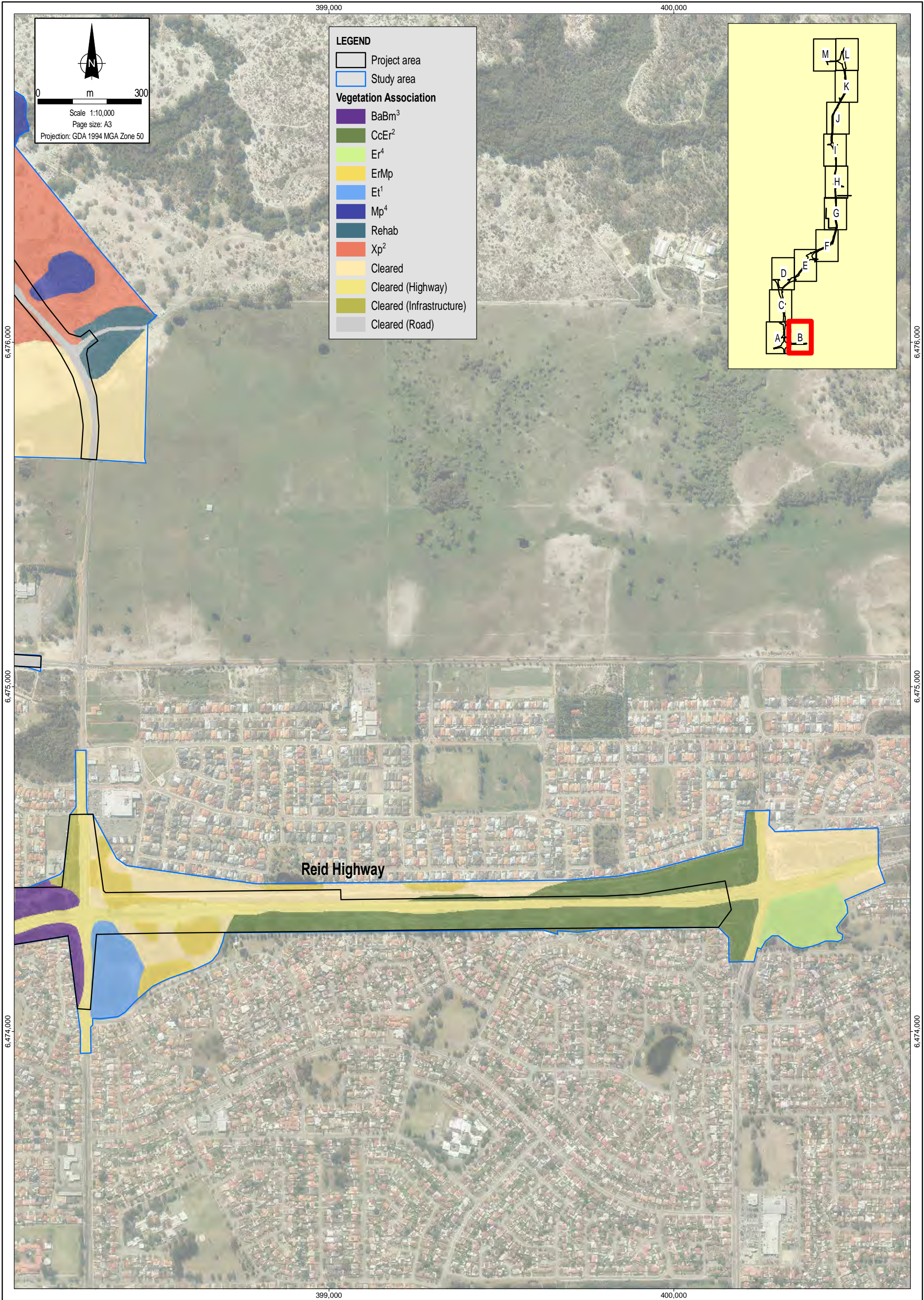
Date:  
26.03.2015  
MXF:  
4483AA\_23 GIS021\_2  
File Name:  
4483AA\_23 F010A GIS

Main Roads WA  
Level 2 Flora and Vegetation Assessment  
Perth-Darwin National Highway

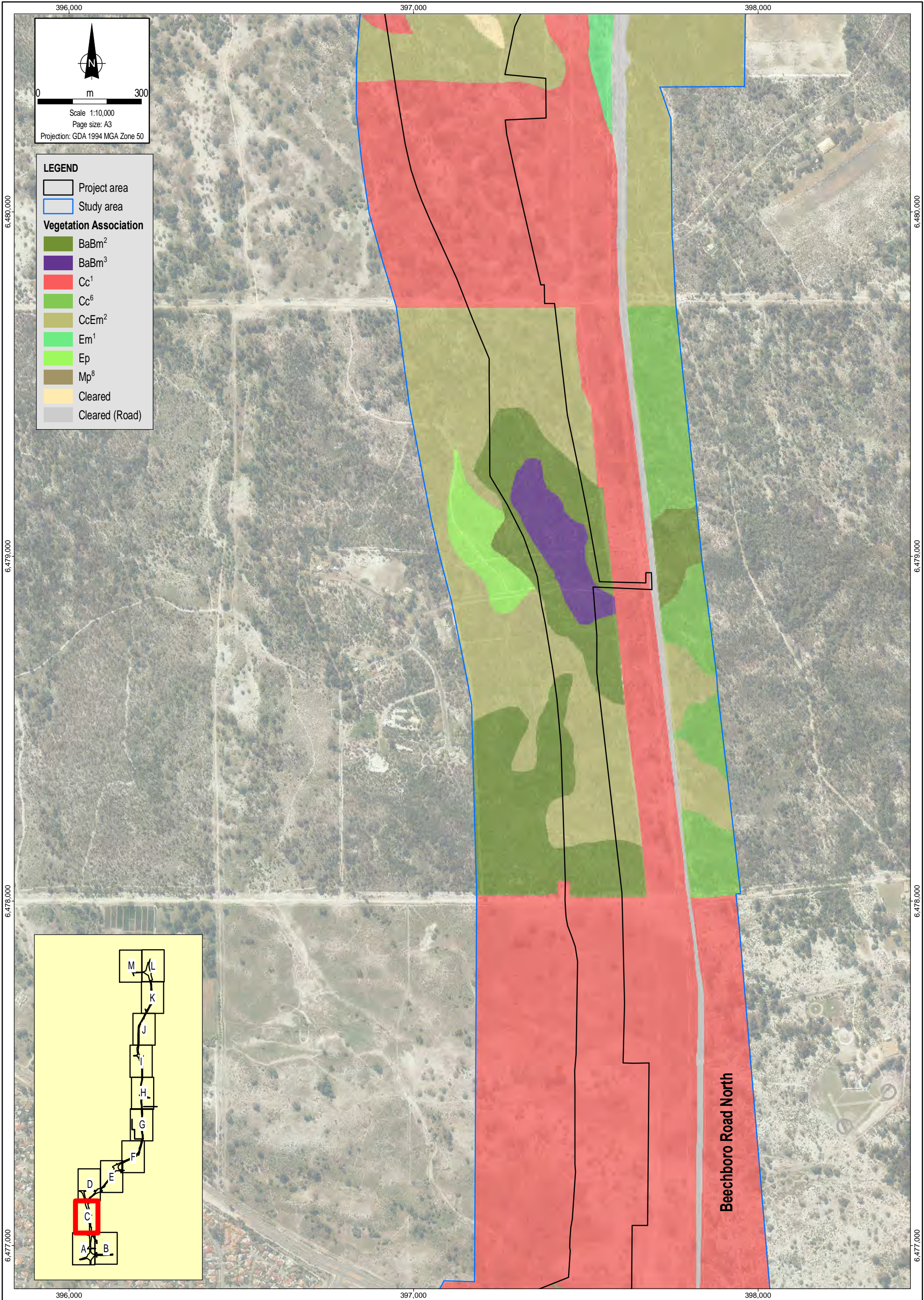
Vegetation association mapping

Figure No:  
10A









Source & Notes  
Vegetation association mapping from Coffey (January 2015)  
Aerial imagery from Landgate (August 2014)

NorthLinkWA

coffey

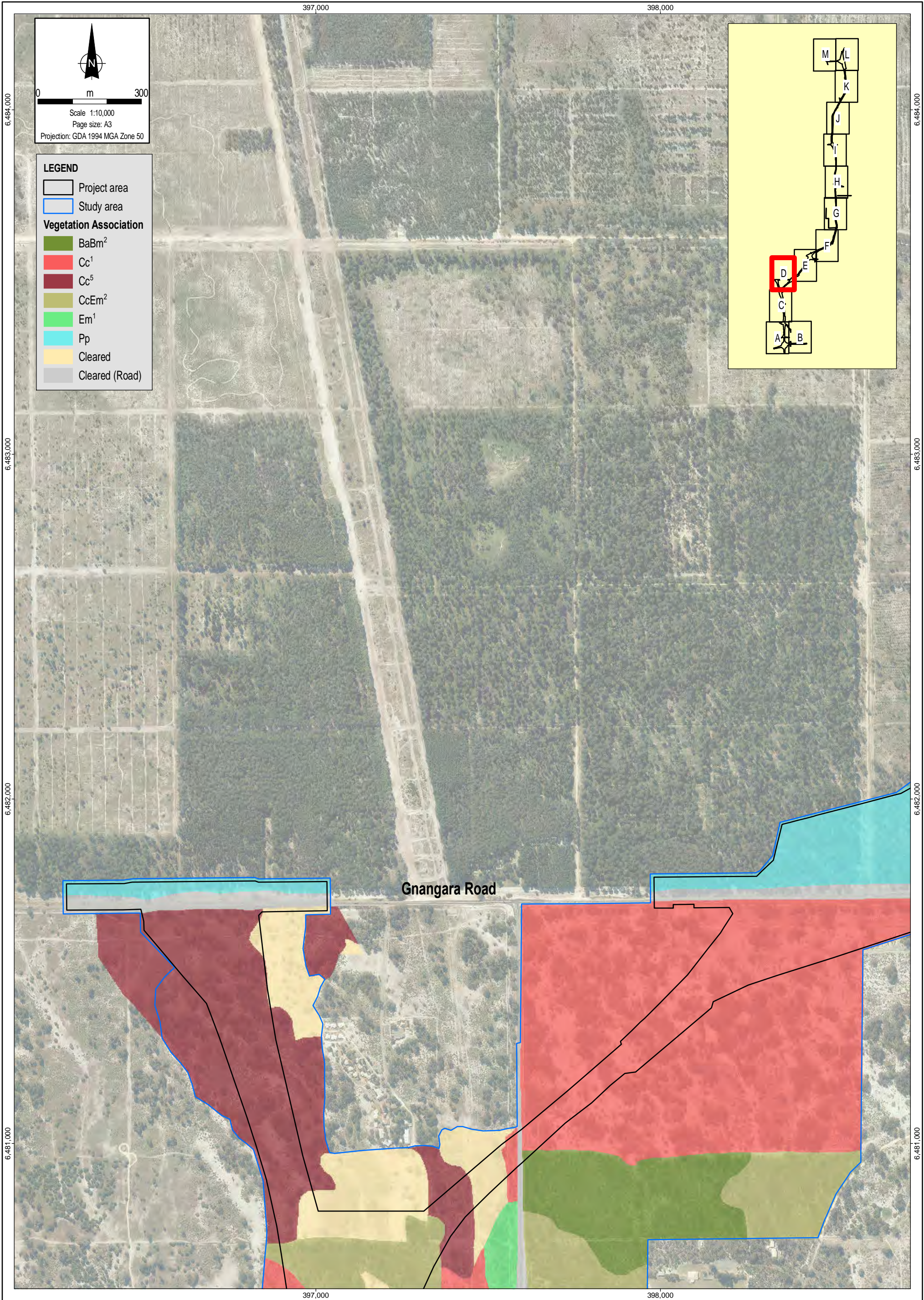
Date:  
26.03.2015  
MXF:  
4483AA\_23 GIS021\_2  
File Name:  
4483AA\_23 F010C GIS

Main Roads WA  
Level 2 Flora and Vegetation Assessment  
Perth-Darwin National Highway

Vegetation association mapping

Figure No:  
10C





Source & Notes  
Vegetation association mapping from Coffey (January 2015)  
Aerial imagery from Landgate (August 2014)

NorthLinkWA

coffey

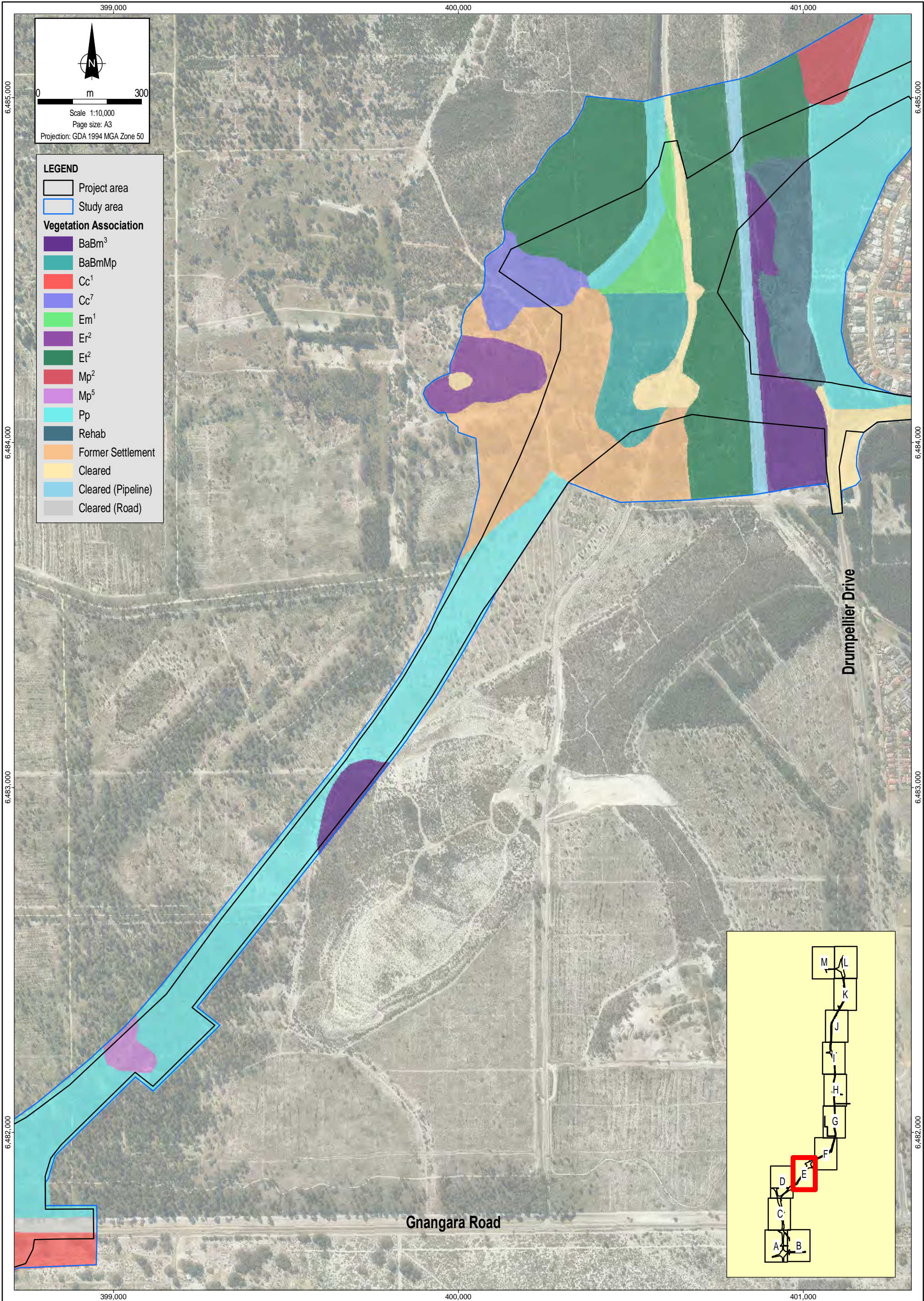
Date:  
26.03.2015  
MXF:  
4483AA\_23 GIS021\_2  
File Name:  
4483AA\_23 F010D GIS

Main Roads WA  
Level 2 Flora and Vegetation Assessment  
Perth-Darwin National Highway

Vegetation association mapping

Figure No:  
10D





Source & Notes  
Vegetation association mapping from Coffey (January 2015)  
Aerial imagery from Landgate (August 2014)

NorthLinkWA

coffey

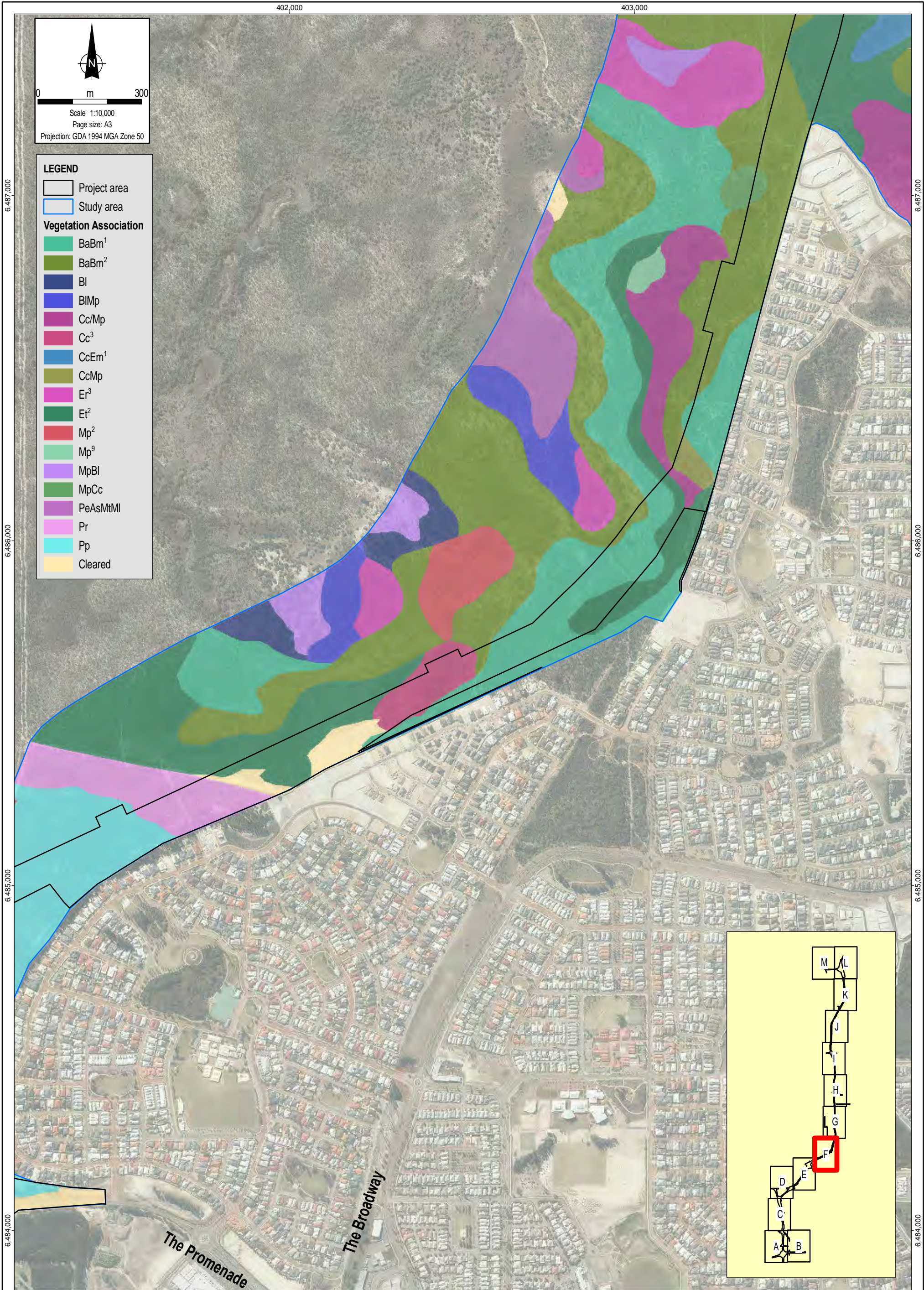
Date:  
26.03.2015  
MXF:  
4483AA\_23 GIS021\_2  
File Name:  
4483AA\_23 F010E GIS

Main Roads WA  
Level 2 Flora and Vegetation Assessment  
Perth-Darwin National Highway

Vegetation association mapping

Figure No:  
10E





Source & Notes  
Vegetation association mapping from Coffey (January 2015)  
Aerial imagery from Landgate (August 2014)

NorthLinkWA

coffey

Date: 26.03.2015  
MXF:  
4483AA\_23 GIS021\_2  
File Name:  
4483AA\_23 F010F GIS

Main Roads WA  
Level 2 Flora and Vegetation Assessment  
Perth-Darwin National Highway

Vegetation association mapping

Figure No:  
10F