

**MINUTES OF MEETING – Construction Reference Group (CRG)  
Murdoch Drive Connection  
Meeting 4**

<b>Date:</b>	Monday 9 <sup>th</sup> April 2018		<b>Time:</b>	17:00-20:00	<b>Location:</b>	Lakeside Recreation Centre, Cnr Farrington Road and Bibra Drive, North Lake (and site visit)
<b>Distribution:</b>	All CRG members and meeting visitors					
<b>Attendees:</b>	Decima Johns	DJ	Bibra Lake resident	Con Abbott	CA	Leeming resident
	Jadranka Kiurski (until 6:30)	JK	Acting Manager Engineering, City of Cockburn	Phil Glew	PG	Bateman resident
	Jillian Reid	JR	Murdoch Chase resident	Christine Cooper	CC	President, Bibra Lake Residents Group
	Anonymous		Resident	Harry Gough	HG	Transport Infrastructure Council of WA
	Kimberley Broztl	KB	Manager Engineering, City of Melville	Philip Eva	PE	Elected member, City of Cockburn
	Thorsten Goedicke	TG	North Coogee resident			
	Linton Pike	LP	CRG Chairperson	Jorelle Little	JL	CRG Executive Officer

<b>Visitors:</b>	Shane McCarney	SM	Senior Civil Engineer, MRIA	Terry Pearce	TP	Project Director, MRIA/Main Roads WA
	Revel Downing	RD	Construction Manager, MRIA	John Robertson	JR	Main Roads WA

<b>Apologies:</b>	John Amanatidis	JA	Bibra Lake Resident	Yaz Mubarakai	YM	Member for Jandakot
	Nicole Robins	NF	Elected member, City of Melville	Chris White	CW	Transport Infrastructure Council WA
	John Goncalves	JG	Murdoch Chase resident	James Nicholson	JN	Booragoon resident
	Kevin Wragg	KW	Bibra Lake Resident	Sally Osborne	SO	Cockburn Community Wildlife Corridor
	Charles Sullivan	CS	Director Engineering and Works, City of Cockburn	Kim Sadlier	KS	Success Residents Association
	Joe Branco	JBr	Joe Branco	Dr Jonathan Tan	JT	GP Registrar
	Matthew Young	MY	Associate director, Commercial and Project Services, Murdoch University	Dr Maree Matthews	MM	Bluegum Montessori School
	Cam Bartram	CB	Ardross resident	Mark Ashby	MA	Principal, Kennedy Baptist College

**NO. ITEM / DETAILS**

**SITE VISIT**

A site visit was held before the Construction Reference Group meeting. Site visit participants included Harry Gough, Phil Glew, Thorsten Goedicke, Decima Johns, Christine Cooper, Shane McCarney, Flynn Drabble, Revel Downing, Luke Spagnolo, Jorelle Little and Linton Pike.

Photos taken during the visit are provided below

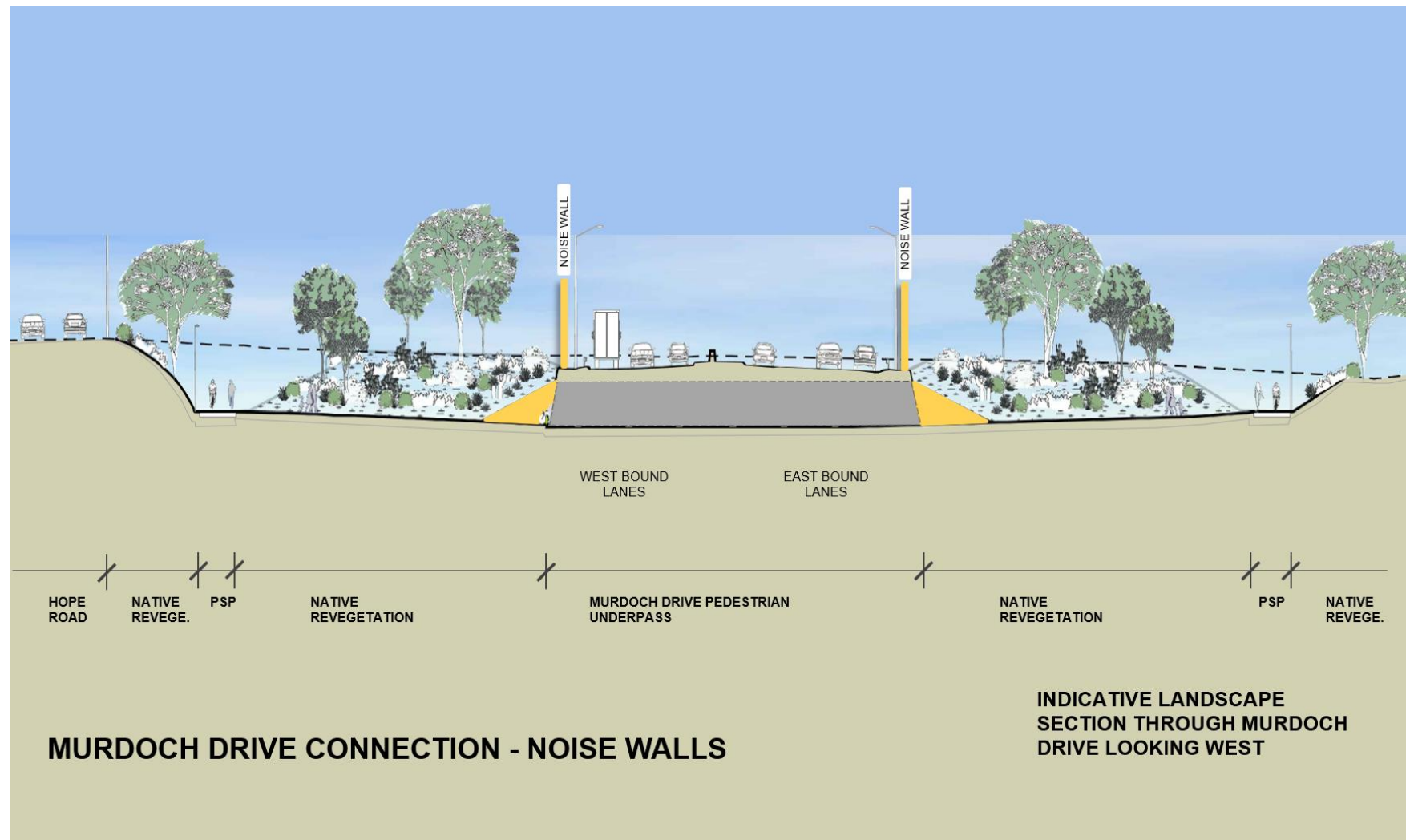
The key outcomes of site visit were:



NO.

ITEM / DETAILS

Shane McCarney discussed noise wall solutions using the following images



NO.

ITEM / DETAILS



**MURDOCH DRIVE CONNECTION - NOISE WALLS**

**EXAMPLE LIMESTONE NOISE WALL NEXT TO  
A PRINCIPAL SHARED PATH (RETAINED  
TREES IN THE BACKGROUND)**

NO.

ITEM / DETAILS



**MURDOCH DRIVE CONNECTION - NOISE WALLS**

**EXAMPLE LIMESTONE NOISE WALL ABOVE  
A 1 YEAR OLD REGEVETATED  
EMBANKMENT (WITH SOME RETAINED  
TREES)**

NO.

ITEM / DETAILS



**MURDOCH DRIVE CONNECTION - NOISE WALLS**

**EXAMPLE LIMESTONE NOISE WALL BEHIND  
4 YEAR OLD REGEVETATATION (WITH SOME  
RETAINED TREES IN THE BACKGROUND)**

NO.

ITEM / DETAILS



**MURDOCH DRIVE CONNECTION**

**EXAMPLE LIMESTONE NOISE WALL  
8 YEAR OLD TREES IN FOREGROUND  
(RETAINED TREES IN BACKGROUND)**

NO.	ITEM / DETAILS	
	<p>Other key discussion topics during the site visit included:</p> <ul style="list-style-type: none"> <li>The southern ramp is now around 500mm to 1m below finished level;</li> <li>The existing power lines remain in their current locations;</li> <li>The PSP grade through this area will not exceed 3% when finished and will be built early wherever possible;</li> <li>The existing bridge over the freeway will be retained;</li> <li>Lighting will be out-reach type with a mix of Main Roads and local government ownership;</li> <li>A noise wall will now be built in the north eastern quadrant but there is no commitment to include it with these project works at this time. If not included it will be done by others;</li> <li>Hope Road impacts were discussed including trees requiring removal and the requirement to relocate the playground.</li> </ul>	
1	<b>PREVIOUS MINUTES AND ACTIONS ARISING</b>	
	<p>Comment was invited on the previous minutes to identify proposed changes or omissions: No changes were requested by CRG members.</p> <p>Actions arising from previous meeting were discussed as follows:</p>	
	<b>ACTION ARISING FROM FEBRUARY 2018 MEETING</b>	<b>FOLLOW UP REPORTED AT THIS MEETING</b>
	<p>Dust recording data has not yet been made available and dust suppression is ongoing. The value of the data to this group is unclear (i.e. will it meet the groups requirements?) The available data will be reviewed by Jarrid and provided to the group if suitable and meaningful. Jarrid to comment and discuss subsequently.</p> <p style="text-align: right;"><b>ACTION: Jarrid</b></p>	<p>Dust management information will be provided by Revel Downing later in this meeting.</p>
	<p>Trapping data from 12 January 2018 was reviewed with a subsequent walkthrough of the site. Eighteen traps were set and caught lizards, frogs and bandicoots. Trapping will continue in other areas as we prepare for clearing in accordance with procedures. Jarrid to check where trapped fauna relocated to</p> <p style="text-align: right;"><b>ACTION: Jarrid</b></p>	<p>Records show fauna were relocated to Shirley Balla Swamp reserve (Banjup) and Brownman Swamp (Henderson).</p>
	<p>Provide full planting list to CRG members.</p> <p style="text-align: right;"><b>ACTION: Faron</b></p>	<p>We have met with Wetlands Centre people and provided them with a full species list. All CRG members received the species list in the previous minutes.</p>
	<p>New traffic management approvals will be required for the proposed staging. Jarrid to ensure approved plans are in place.</p> <p style="text-align: right;"><b>ACTION: Jarrid</b></p>	<p>Our Traffic Manager is liaising with CoC as an ongoing matter.</p>

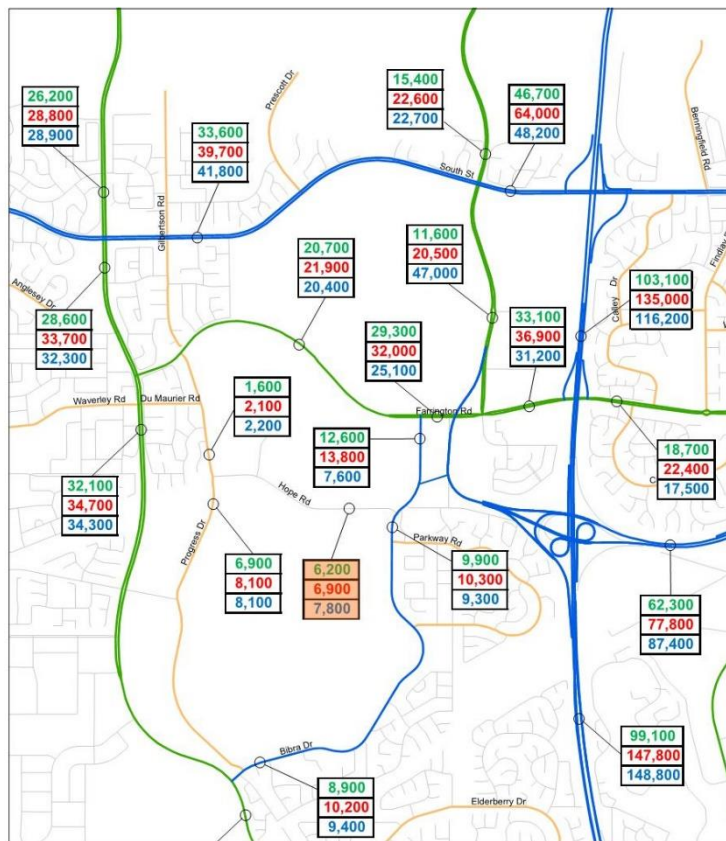


NO.	ITEM / DETAILS	
	<p>I would like to see evidence of the project's outcomes for Hope Road west traffic with a concern that traffic volumes will increase.</p> <p style="text-align: right;"><b>ACTION: Padraic</b></p>	<p>Shane McCarney to present more information later in this meeting.</p>
	<p>Could more information on fauna movement and insulation of fauna underpasses be provided please? Jarrid to provide at a future meeting.</p> <p style="text-align: right;"><b>ACTION: Jarrid</b></p>	<p>Fauna underpasses information to be presented tonight by Shane McCarney.</p>
	<p>Dust monitoring detail is still of interest if that could be presented. Jarrid explained that dust gauges record what is passing through them, not the quantity of what passes through them. A visual dust assessment is also done and action taken where appropriate. Jarrid to report in more detail at a future meeting and comment on the capacity to include dust volumes.</p> <p style="text-align: right;"><b>ACTION: Jarrid</b></p>	<p>This information to be provided by Revel Downing later in this meeting</p>
	<p>Jorelle will email project information provided to the Bibra Lake residents group to all CRG representatives.</p> <p style="text-align: right;"><b>ACTION: Jorelle</b></p>	<p>This has been done and is an ongoing task.</p>
	<p>The CoC has held its AGM of electors meeting with a request for more public information to go to the March Council meeting. CoC staff will need to be in attendance at the Council meeting and understand the information provided by the MRIA team. Jorelle to discuss Community Information Session approach with Charles.</p> <p>The 85% design drawings for Armadale Road are also before CoC staff with Technical Working Group querying lighting levels around the site as a matter for further discussion.</p> <p style="text-align: right;"><b>ACTION: Jorelle</b></p>	<p>This was resolved with Charles Sullivan.</p> <p>Ongoing liaison with LGA's to discuss lighting which will be provided to Western Power standards and in accordance with the project specification with the resultant assets owned by MR or LGA.</p> <p>We must comply with road user safety standards and will retain existing light pole styles and must comply with luminance levels with halogen bulb lighting to standard.</p> <p>Future discussion topic for Shane – aesthetics and light spill.</p> <p style="text-align: right;"><b>ACTION: Shane</b></p>

NO.	ITEM / DETAILS
2	<b>CONCEPT DESIGN – PADRAIC MURPHY / SHANE MCCARNEY</b>
2.1	<b>Hope Road Traffic Projections</b>

**NO. ITEM / DETAILS**

**ROM 2021 Traffic Volume Comparison**



Vehicles Per Day (both directions)

Existing Count
2021 Do Nothing
2021 Approved Concept Design

Scenario	Vehicles per day <sup>1</sup>	Vehicles per hour <sup>2</sup>
Existing	6200	500
2021 (Do Nothing)	6900	560
2021 (with MDC)	7800	630 (+70)

1 - Vehicles per day in both direction

2 - Vehicles per day based on an 8% PHF

The section of Hope Road west of Bibra Drive will experience some increase in traffic as a result of improved connectivity to Murdoch Drive from Bibra Drive. The existing traffic volumes is approximately 500 vehicles per hour in both directions.

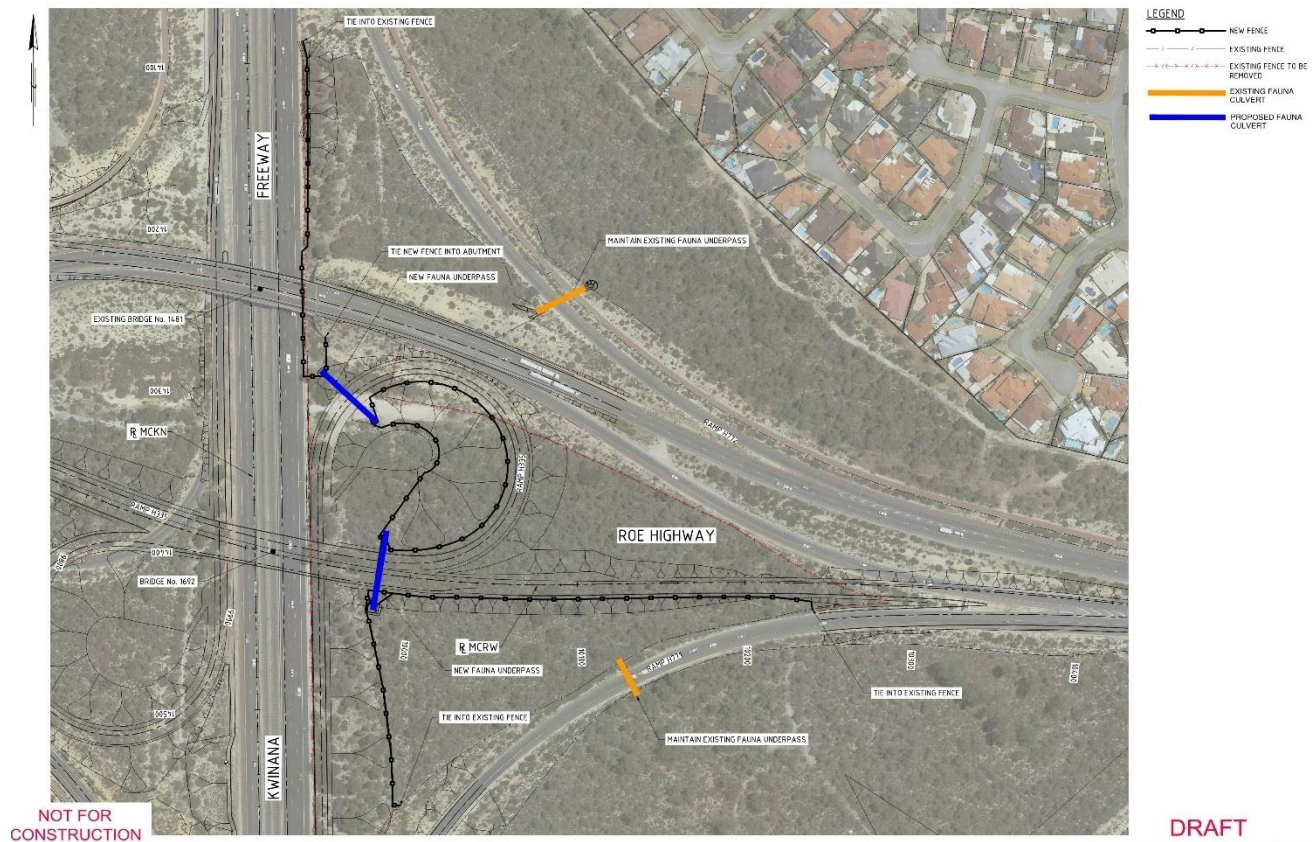
Without the MDC project (do-nothing scenario), the traffic is predicted to increase to 560 veh/hr.

With the MDC project the traffic predicted to increases to 630 veh/hr (additional 70 veh/hr compared to the do-nothing scenario).

Our traffic engineers are currently reviewing the Hope Road / Bibra Drive intersection performance with the MDC project and we will present the findings at the TWG on Wednesday.

NO. ITEM / DETAILS

2.2 Fauna Underpass Location



There is an existing fauna crossing of Roe Highway at the Kwinana Freeway interchange. From north to south the existing crossing route includes an existing fauna culvert under the southbound off-ramp from Kwinana Freeway to Roe Highway, a clear area between the existing bridge abutment and the Kwinana Freeway for fauna to pass through and an existing fauna culvert under the southbound on-ramp from Roe Highway to Kwinana Freeway.

There are no major works required to the eastern ramps and the existing fauna culverts will be retained. The interchange upgrade causes an impediment to the existing crossing and 2 new fauna culverts will be provided under the westbound carriageway of Roe Highway and the loop ramp from Murdoch Drive to Kwinana Freeway southbound. New fauna fencing will be installed where required to retain a safe fauna crossing through the interchange.

NO. ITEM / DETAILS

2.3 Noise Wall Locations



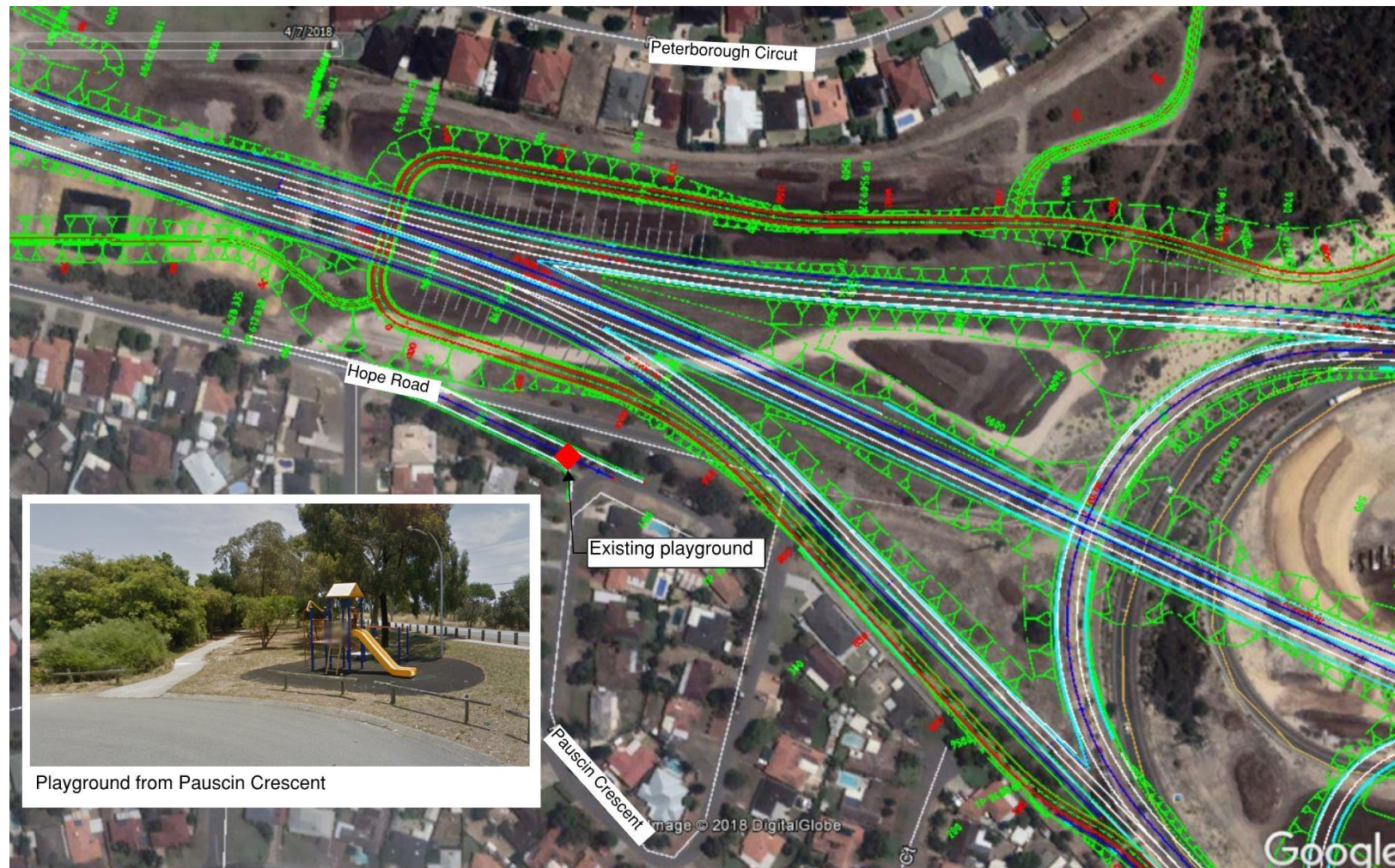
Noisewall modelling has been completed and extents and wall heights are confirmed as shown. The extents of the noisewall around the ARC Bridge have been updated to extend further north of the ARC Bridge. The noisewall from the southern tie-in of Kwinana Freeway to the ARC Bridge requires further assessment and the details will be developed in consultation with a separate directly impacted residents.

An amendment to the noisewall in the NW quadrant is required to include an overlap at the northern end of the noisewall. The overlap will run along the south side of Shared Path connection to the PSP.

Construction of the noisewall in the NE quadrant shown is shown in green and is scheduled for completion by the end of 2019. This is not part of the current scope of work but may be delivered by the Alliance.

NO. ITEM / DETAILS

2.4 Hope Road Playground



The existing playground located within Main Roads owned land situated between Pausin Crescent and Hope Road will be relocated as the eastern extent of the existing Hope Road is impacted by the Murdoch Drive off ramp and proposed PSP. To maintain access to Pausin Crescent, Hope Road needs to be realigned from Gilchrist Avenue to Pausin Crescent. As a result, the realigned Hope Road runs through the existing playground. There is a commitment to relocate the playground as part of the project however the location is to be confirmed. The site selection for the relocated playground will be discussed with the City of Cockburn at the Technical Working Group during April.

NO. ITEM / DETAILS	
QUESTIONS AND ANSWERS	
Q	Are the noise walls treated with fire retardant?
A	No.
Q	Will a roundabout be provided at Hope Road and Bibra Drive intersection?
A	No, it is out of scope and is a local government consideration. Monitoring of local network changes will occur after these works are completed.
Q	Can we go back say 10 years traffic modelling to look at trend lines and step changes with Fiona Stanley Hospital and other changes?
A	Shane will consider whether there is value to the group in available historical data. <b>ACTION: Shane McCarney</b>
Q	Is there any environmental emission data?
A	No, it isn't modelled and the PER identifies that the project will improve air quality with more efficient vehicle movements.  Environmental Impact Assessment – Public Environmental Review is located here: <a href="https://project.mainroads.wa.gov.au/roe8/environment/Pages/assessments.aspx">https://project.mainroads.wa.gov.au/roe8/environment/Pages/assessments.aspx</a>
Q	Does the traffic modelling include planned future development?
A	Yes, it includes Treeby and other planned developments.
Q	Why isn't there a noise wall on the eastern side of Lakeside to mitigate Murdoch Chase residents? And if not, could it be included?
A	Modelling does not identify a need for mitigation in this location. We won't provide mitigation unless it is needed but we will complete final modelling to ensure compliance and measure actual noise levels against forecast noise levels to ensure compliance over time. The measurement is usually completed around year 5 after completion.
Q	When will the noise wall in the north eastern quadrant be built?
A	It will be built by end of 2019 and may become part of the scope of Alliance work but is not committed as part of it at the moment.
Q	Could additional landscaping and noise wall information be provided at select locations?
A	Yes, with cross sections planned for the north eastern (Leeming) quadrant and near the Spanish Club (Murdoch Chase). <b>ACTION: Shane McCarney</b>
Q	What impact will the Thornlie to Cockburn rail link have?
A	No impacts are expected but we will consider whether there is value in inviting a Metronet team member to present their project scope to this CRG at a future meeting. <b>ACTION: Jorelle</b>
Q	Will all the trees along Hope Road near the playground be lost?

NO.	ITEM / DETAILS
A	<p>We will do our best to retain as many of them as possible.  The City of Cockburn will consider options for location of playground, if community members have any views about the playground please your comments on to Jorelle.</p>
<b>3</b>	<b>CONSTRUCTION PROGRAM – REVEL DOWNING</b>
3.1	<p><b>Construction Progress and Milestones</b>  Progress in the 5 major works segments is explained below</p>

NO. ITEM / DETAILS



Recent progress includes:

- The First Traffic Switch (to the temporary Loop) for westbound Roe Highway traffic to Kwinana Freeway northbound – 13 March 2018.
- Completed Site Office & Relocate Personnel – 9 April 18



NO.	ITEM / DETAILS
	<ul style="list-style-type: none"> <li>• Continued Earthworks to the West of the Freeway - Embankment Construction - PSP, Underpass &amp; Road</li> <li>• Continued Earthworks to the East of the Freeway: <ul style="list-style-type: none"> <li>• Embankment Construction – Roe HWY Westbound</li> <li>• Cut to Fill - Kwinana FWY Southbound</li> </ul> </li> <li>• Commence &amp; Completed Service Location (Potholing) Kwinana Freeway North 5<sup>th</sup> Lane Widening: <ul style="list-style-type: none"> <li>• Services – Telecom, ITS, Electrical &amp; Fibre Optic</li> </ul> </li> </ul> <p>Interim milestones achieved include:</p> <ul style="list-style-type: none"> <li>• Commence Earthworks Stage 1 - Zone 5 (Perm Loop) – 2 Jan 18</li> <li>• Commence Earthworks Cut NW Quad PSP Stage – 2 Feb 18</li> <li>• Commence Excavation PSP UP9375 – 19 Feb 18</li> <li>• DCT Approval – 8 Mar 18</li> <li>• Commence Roe Highway East (Earthworks Fill) – 9 Mar 18</li> <li>• Mobilisation to New Site Office Facility– 9 Apr 18</li> </ul> <p><b>Imminent milestones include</b></p> <ul style="list-style-type: none"> <li>• Commence Accommodation Works Spanish Club - Mid Apr 18</li> <li>• Western Power Service Relocations (Baker Crt) – Mid Apr 18 (late Mar 18)</li> <li>• Commence Noisewall (Base Prep) Lakeside Rec - Mid May 18</li> <li>• Complete Installation PSP UP9375 Underpass – Early Jun 18</li> </ul>
3.2	<p><b>Dust Control and Monitoring</b></p> <p>Two <b>Primary Types of Dust Monitoring used at MDC Project:</b></p> <ul style="list-style-type: none"> <li>• DDGs (Dust Dep Gauge) – Passive Static – 30 Day Sampling</li> <li>• AEROSOL Monitor – Active Static – Live (Every second - mg/l)</li> </ul> <p>Dust site control measures are shown over the page</p>

NO. ITEM / DETAILS



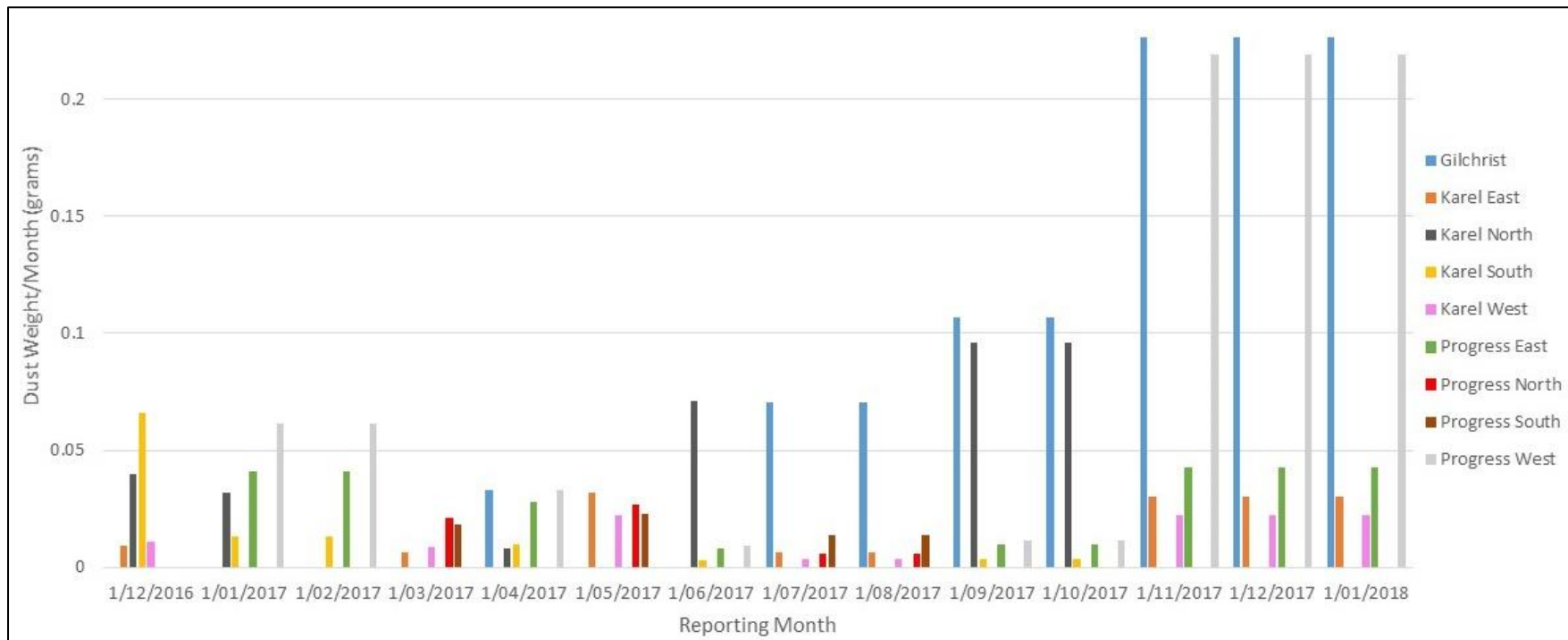
NO. ITEM / DETAILS



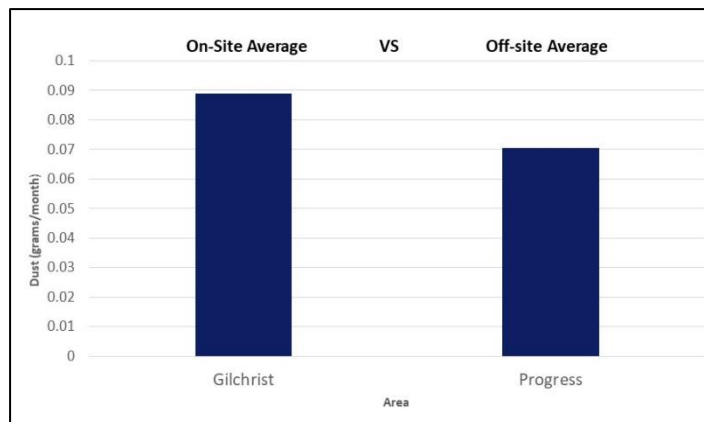
DDG's are shown in blue  
Aerosols are shown in orange

**NO. ITEM / DETAILS**

Dust deposition gauges returned the following results from across the Bibra Lake area. Values are for an entire month of dust collection.

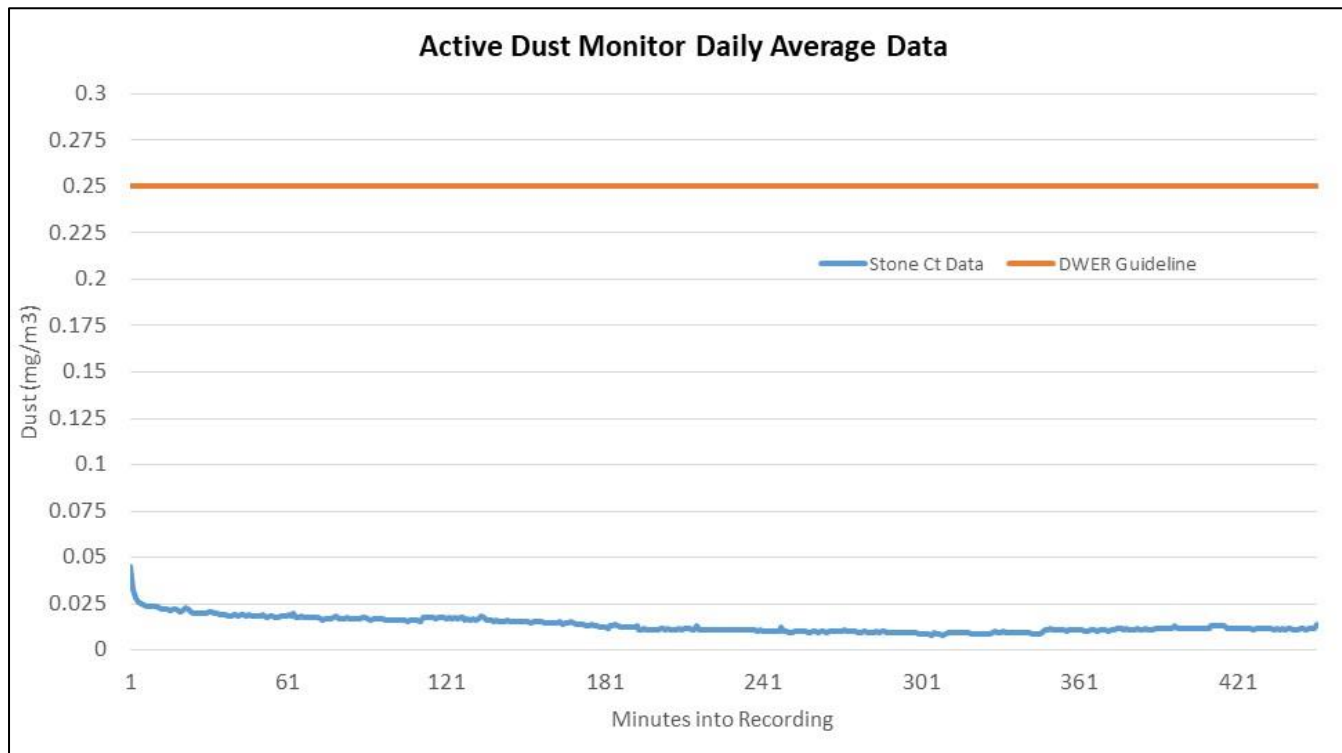


The 12 month average is shown below



**NO. ITEM / DETAILS**

Dust monitoring recordings from the aerosol active monitor are as follows.



**QUESTIONS AND ANSWERS**

**Q** Have you moved to the new office yet?

**A** Yes.

**Q** What is the loop ramps radii?

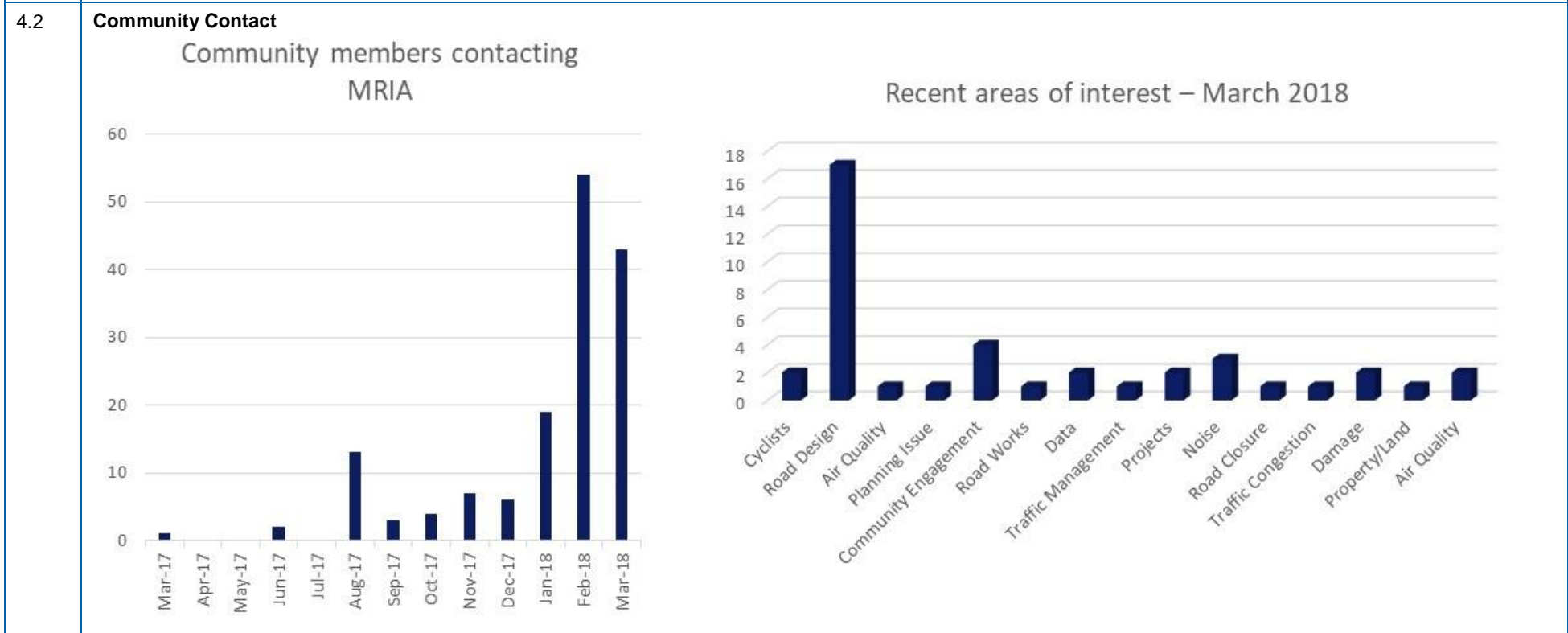
**A** Temporary works are tighter geometry with permanent loops around a constant 60m radius and designed for larger vehicles. Terry Pearce committed to provide a comparative radius for the Leach Highway loops. Task subsequently reassigned to John Robertson.

**ACTION: John Robertson**

**Q** It seems that dust levels had dropped a little until we had the easterlies with Hope Road very dusty and cars covered in dust. Does that reflect recent activity?

NO.	ITEM / DETAILS
A	Yes, clearing work has potential to generate significant dust, and is mostly complete.
Q	Will all existing overhead power lines remain where they are?
A	The high voltage lines will remain where they are. The lower voltage lines will be undergrounded.
Q	What works are required at the Spanish Club?
A	Works include changes to access, playing field modifications, relocation of overhead lights, reticulation modifications and the erection of netting to prevent balls reaching nearby roadways.
<b>4</b>	<b>COMMUNITY ENGAGEMENT – JORELLE LITTLE</b>
4.1	<p data-bbox="253 528 472 555"><b>Key CSE Activities</b></p> <p data-bbox="253 603 860 630"><b>Community Information Session 10 March 2018</b></p> <ul data-bbox="315 646 2074 981" style="list-style-type: none"> <li>• Approx. 500 members of the community attended the event in a four-hour period between 9:00am and 1:00pm.</li> <li>• Key stakeholders in attendance included the Member of Parliament for Tangney, the Mayors of Cockburn and Melville, other local councillors, senior officers from both Local Government Authorities and representatives from local residents' groups.</li> <li>• Project personnel took the opportunity to address questions about local access changes, particularly movements between Bibra Drive, Farrington Road and Murdoch Drive.</li> <li>• Access from Murdoch Chase to the Murdoch Drive Connection (via Allendale Entrance) remains a key local concern.</li> <li>• A number of Leeming residents expressed concern over congestion and safety issues on Farrington Road.</li> <li>• More generally, a number of attendees wished to compare the earlier (2017) concept design with the current concept.</li> <li>• Follow up actions and responses are underway</li> </ul> <p data-bbox="253 1029 398 1056"><b>Direct mail</b></p> <ul data-bbox="315 1072 775 1099" style="list-style-type: none"> <li>• Murdoch Chase letter, March 2018</li> </ul> <p data-bbox="253 1147 544 1174"><b>New website materials</b></p> <ul data-bbox="315 1190 860 1382" style="list-style-type: none"> <li>• Project newsletter March 2018</li> <li>• Getting Around booklet</li> <li>• Traffic management update</li> <li>• Construction update</li> <li>• Managing construction impacts newsletter</li> </ul>

**NO. ITEM / DETAILS**



- 4.3 **Upcoming CSE Activities**
- Materials in development**
- Noise walls poster
  - Bibra Lake cross sections
  - Project newsletter, June 2018
- Local and state government engagement**
- Hope Road playground relocation TWG
  - Leeming newsletter, April 2018

NO. ITEM / DETAILS	
	<p><b>Ongoing engagement</b></p> <ul style="list-style-type: none"> <li>• Construction updates via email broadcast</li> <li>• Ongoing targeted communication to support construction activity</li> </ul>
<b>QUESTIONS AND ANSWERS</b>	
<b>Q</b>	Is it possible for the CoM and CoC to have their views included in mailouts to understand their points of view?
<b>A</b>	Mail outs are used to keep the local community informed about construction activities and opportunities for engagement.

2 CRG MEMBER COMMENT		
Name	Comment	ACTION
Harry Gough	My concerns go beyond the project scope eg Murdoch Drive and other traffic volumes and the resultant response. Terry Pearce explained that this is a LG matter but we will pass on CRG member concerns.	<b>Shane McCarney</b>
Kimberley Brosztl	The CoM's recommended option previously presented to this group has gone to state and federal government.	
Phil Glew	I share concerns regarding traffic but around Bateman including Farrington Road access to Murdoch Drive northbound with limited connectivity provided.	
Christine Cooper	Thanks to Jorelle for the information regularly provided. The next Bibra Lake Resident Association Meeting is next week and the timing and scheduling information is valuable. Western Power works are also important to us and impact upon local residents. The same applies to low voltage network tie ins. We will provide feedback on the Hope Road playground to Jorelle.	
Philip Eva	Please ensure direct mail and contacts go to Murdoch Chase residents. A Hope Road playground update will be welcome by council. Dust complaints have dropped. I am pleased with progress at the moment.	



Jillian Reid	<p>Murdoch Chase Resident Association in place now and this information is welcomed. Please continue to contact us and keep us informed with relevant information. It might be useful to discuss bus route impacts with the PTA including access routes to the train station when Murdoch Drive closes?</p> <p>Terry Pearce noted that:</p> <ul style="list-style-type: none"> <li>• Strategy drawing is in place access wise and will be included with these minutes (see Attachment Two)</li> <li>• The bus stop south bound on Farrington Road remain where it is. A new bus stop will result on the new road just south of Farrington Road at Baker Court.</li> <li>• Provide this information to community members via Newsletter including existing Murdoch Drive footpath tie in information.</li> </ul>	<b>Jorelle</b>
Thorsten Geodicke	<p>Freeway pedestrian overpass scope removal needs further explanation – was it simply cost driven? Yes, with various items removed to remain within available budget with other routes available albeit longer. Information on shared path route changes to be communicated in future newsletter.</p>	<b>Jorelle</b>
Decima Johns	<p>I am still concerned at impacts for mature trees along Hope Road near the playground. Minor works information for Hope Road link information will be provided and the team is confident that most trees will remain. Shane McCarney will provide a plan showing trees that will remain and we will consider tagging trees on site if that helps to inform local community.</p>	<b>Revel</b>
Anonymous Resident	<p>I am concerned at the impact of light spill. Noise wall height and quality is important. Vehicle emission modelling would be useful if it is available. Will earth bunding be used? No What are the working hours? We will include them in a future newsletter and have been reported at earlier CRG meetings. What surfacing type will be used? Full depth asphalt on the main interchange as a potential future discussion topic. What indigenous involvement has occurred? We have done a lot of earlier consultation as part of Roe 8 and S18 process. We have gone back to consult with little feedback or concerns raised. We have aspirational targets for Aboriginal involvement in the project. Joe Branco also represents Aboriginal community interest</p>	<b>Shane</b>
Con Abbott	<p>The CRG Terms of Reference call for input to detailed design. This is occurring outside of this group and limits our ability to influence outcomes. CoM and local members are corresponding with residents. Can we invite Matt Woodall be invited to present the CoM's position to the CRG?</p> <p>Terry Pearce explained that the CoM's representative is Cr Foxton who has expressed the views of Council. Terry noted that this is a Construction Reference Group with a focus on managing the associated detailed design and its local area impacts.</p>	

<b>NEXT MEETING</b>	
---------------------	--

Suggested future Agenda items are listed in the body of this document

The next meeting is scheduled for 28 May 2018

The workshop closed at 8:15pm

**ATTACHMENTS:**

1. Workshop Agenda
2. Local public transport changes

**ATTACHMENT ONE  
WORKSHOP AGENDA**

<b>NO.</b>	<b>ITEM / DETAILS</b>	<b>PRESENTER</b>
<b>1</b>	<b>WELCOME</b>	<b>LINTON PIKE</b>
<b>2</b>	<b>CONCEPT DESIGN</b>	<b>SHANE MCCARNEY</b>
2.1	Hope Road traffic projections	
2.2	Fauna underpass location	
2.3	Noise wall locations	
2.4	Hope road playground	
<b>3</b>	<b>CONSTRUCTION PROGRAM</b>	<b>REVEL DOWNING</b>
3.1	Construction milestones	
3.2	Dust monitoring	
3.3	Upcoming site activities	
<b>4</b>	<b>COMMUNITY ENGAGEMENT</b>	<b>JOELLE LITTLE</b>
4.1	Key CSE activities	
4.2	Community contact	
4.3	Upcoming CSE activities	
<b>5</b>	<b>NEXT STEPS</b>	<b>LINTON PIKE</b>
5.1	CRG member comments	
5.2	Topics of interest for agenda	
5.3	Date for next meeting	<b>28 MAY 2018</b>

## ATTACHMENT TWO PUBLIC TRANSPORT ACCESS

