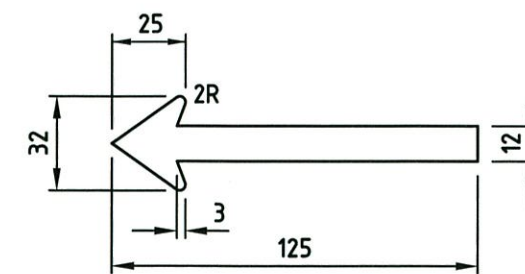
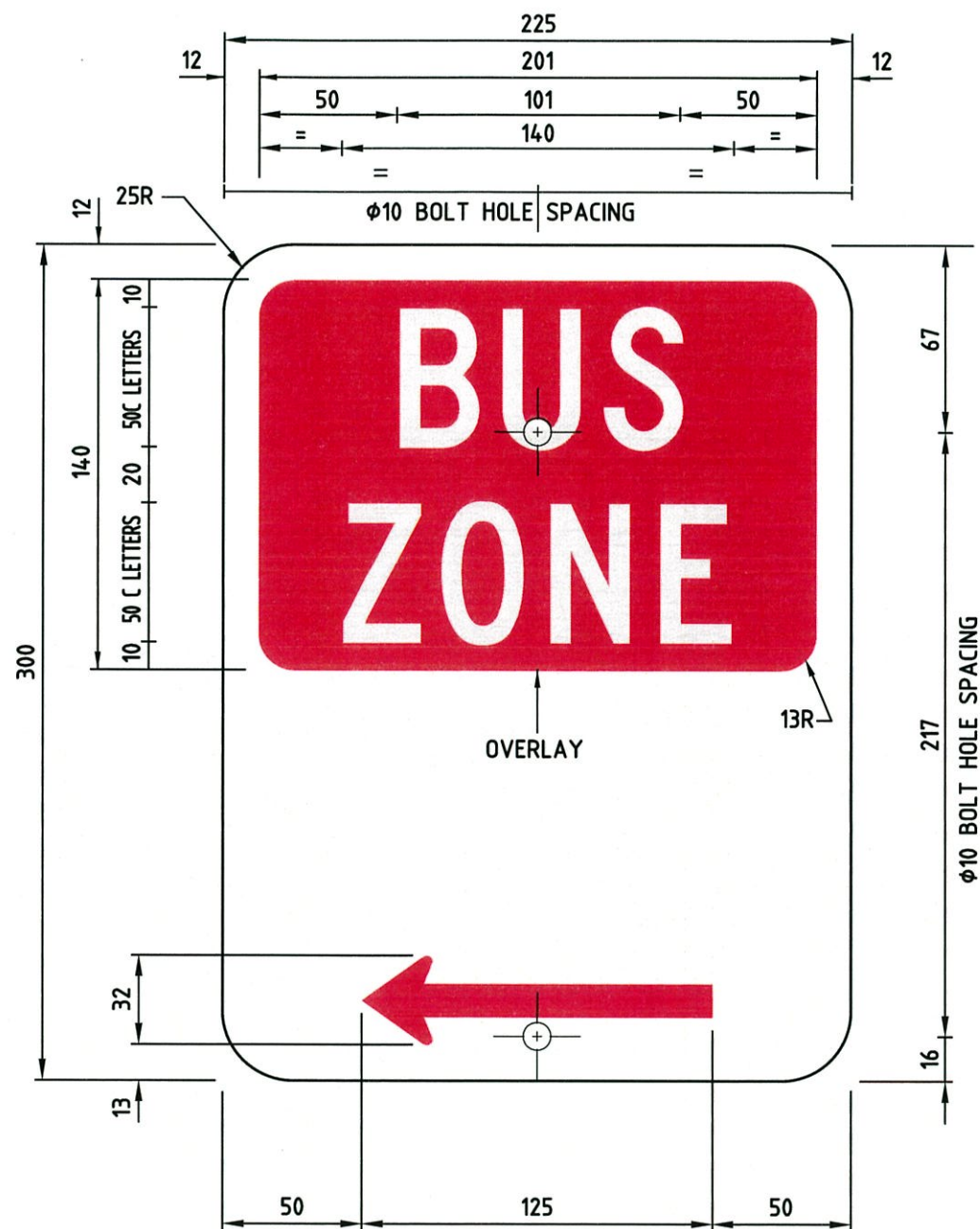
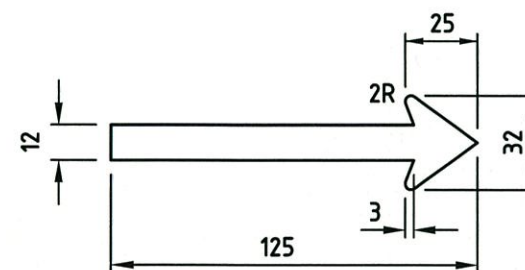


AMENDMENTS

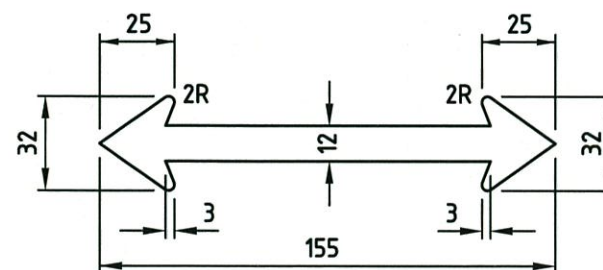
| No. | DATE     | DESCRIPTION   | APPROVED                      |
|-----|----------|---|-------------------------------|
| 1   | 13.95    | REPLLOT, ORIGINAL LOST.   | C. WOOLDRIDGE                 |
| 2   | 30.3.95  | COLOR SPEC. CHANGED   | C. WOOLDRIDGE                 |
| 3   | 18.5.00  | TITLE AMENDED   | R. GROVE                      |
| 4   | 15.01.02 | AMENDMENTS TO TITLE BLOCK, NOTES, CORNER RADIUS, BOLT HOLE SPACING ADDED. | D. SULLIVAN                   |
| 5   | 16.10.17 | FONT STYLE CHANGED, NOTE 5 & COLOUR ADDED.                                | <i>[Signature]</i><br>20/1/18 |



① (L)



② (R)



③ (L & R)

NOTES:

- DIMENSIONS: MEASUREMENTS IN mm. CORNER RADIUS = 25.  
MAIN SIGN PANEL AREA = 0.068 SQM.
- COLOURS : PAINTED/SCREENED RED OVERLAY ON WHITE PAINTED BACKGROUND.
- GRAFFITI PROTECTION: TO BE SPECIFIED BY THE DESIGNER IN ACCORDANCE WITH MAIN ROADS GUIDELINES.
- MATERIALS : ALL SIGN MATERIALS AND MANUFACTURE TO BE IN ACCORDANCE WITH MAIN ROADS SPECIFICATION 601.
- TEXT FONTS COMPLY WITH FHWA 2000 SERIES.

**MAIN ROADS WESTERN AUSTRALIA**  
TECHNOLOGY AND ENVIRONMENT  
ROAD AND TRAFFIC ENGINEERING  
Waterloo Crescent  
East Perth 6004

|                  |                       |
|------------------|-----------------------|
| FILE NUMBER      | 67-08-4F              |
| DESIGNED / DRAWN | C. WOOLDRIDGE 4.10.94 |
| VERIFIED         | T. HAZEBROEK 14.10.94 |
| APPROVED         | V. JOHNSTON 29.3.95   |

REGULATORY SIGN  
PARKING SERIES  
BUS ZONE  
MR-RPK-6A

|                 |                |       |
|-----------------|----------------|-------|
| LOCAL AUTHORITY | DRAWING NUMBER | AMEND |
| 6022            | 9431-1040-5    |       |