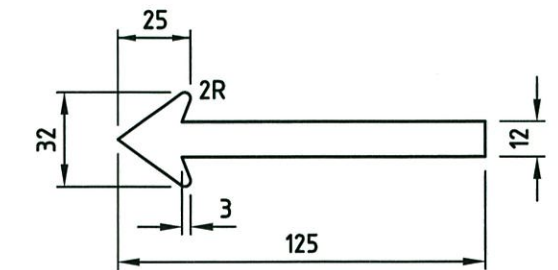
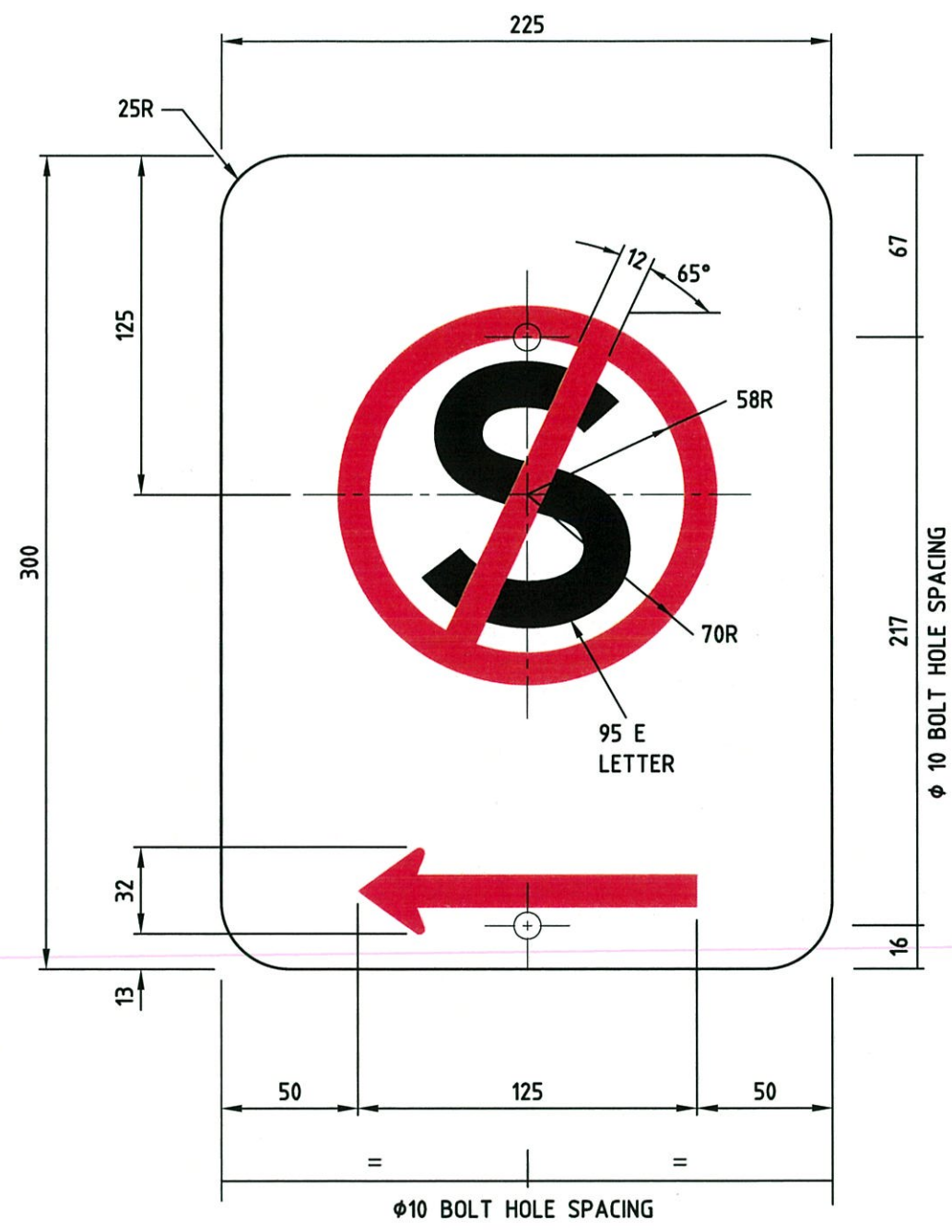
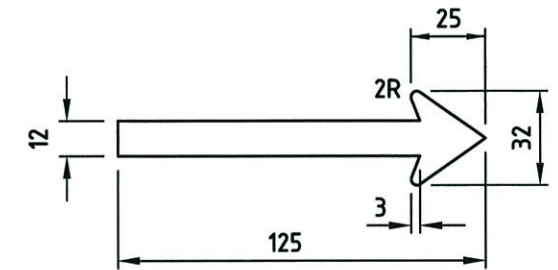


AMENDMENTS

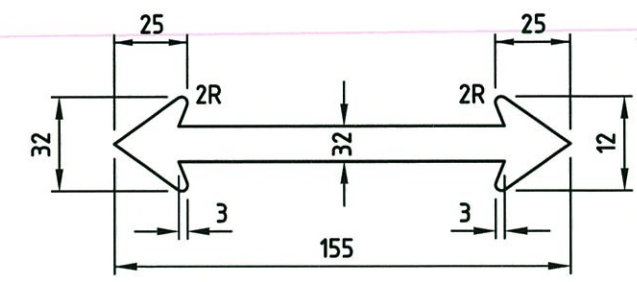
No.	DATE	DESCRIPTION	APPROVED
1	13.95	REPLLOT, ORIGINAL LOST.	C. WOOLDRIDGE
2	8.3.95	DIMENSION CHANGED.	C. WOOLDRIDGE
3	30.3.95	COLOR SPEC. CHANGED.	C. WOOLDRIDGE
4	18.5.00	TITLE AMENDED	R. GROVE
5	15.01.02	AMENDMENTS TO TITLE BLOCK, NOTES, CORNER RADIUS, BOLT HOLE SPACING ADDED.	D. SULLIVAN
6	16.10.17	FONT STYLE CHANGED, NOTE 5 & COLOUR ADDED.	<i>[Signature]</i> 20/4/18



1 (L)



2 (R)



3 (L & R)

NOTES:

- DIMENSIONS: MEASUREMENTS IN mm. CORNER RADIUS = 25. MAIN SIGN PANEL AREA = 0.068 SQM.
- COLOURS : PAINTED/SCREENED BLACK "S", RED RING AND ARROW ON WHITE BACKGROUND.
- GRAFFITI PROTECTION: TO BE SPECIFIED BY THE DESIGNER IN ACCORDANCE WITH MAIN ROADS GUIDELINES.
- MATERIALS : ALL SIGN MATERIALS AND MANUFACTURE TO BE IN ACCORDANCE WITH MAIN ROADS SPECIFICATION 601.
- TEXT FONTS COMPLY WITH FHWA 2000 SERIES.

**MAIN ROADS WESTERN AUSTRALIA**  
 TECHNOLOGY AND ENVIRONMENT  
 ROAD AND TRAFFIC ENGINEERING  
 Waterloo Crescent  
 East Perth 6004

FILE NUMBER	67-08-4F
DESIGNED / DRAWN	C. WOOLDRIDGE 23.9..94
VERIFIED	T. HAZEBROEK 23.9..94
APPROVED	R. V. JOHNSTON 29.3.95

REGULATORY SIGN  
 PARKING SERIES  
 NO STOPPING  
 MR-RPK-8A

LOCAL AUTHORITY	DRAWING NUMBER	AMEND.
6022	9431-1038-6	