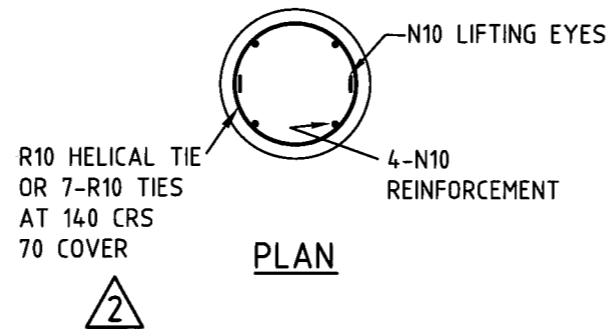
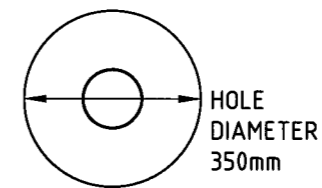


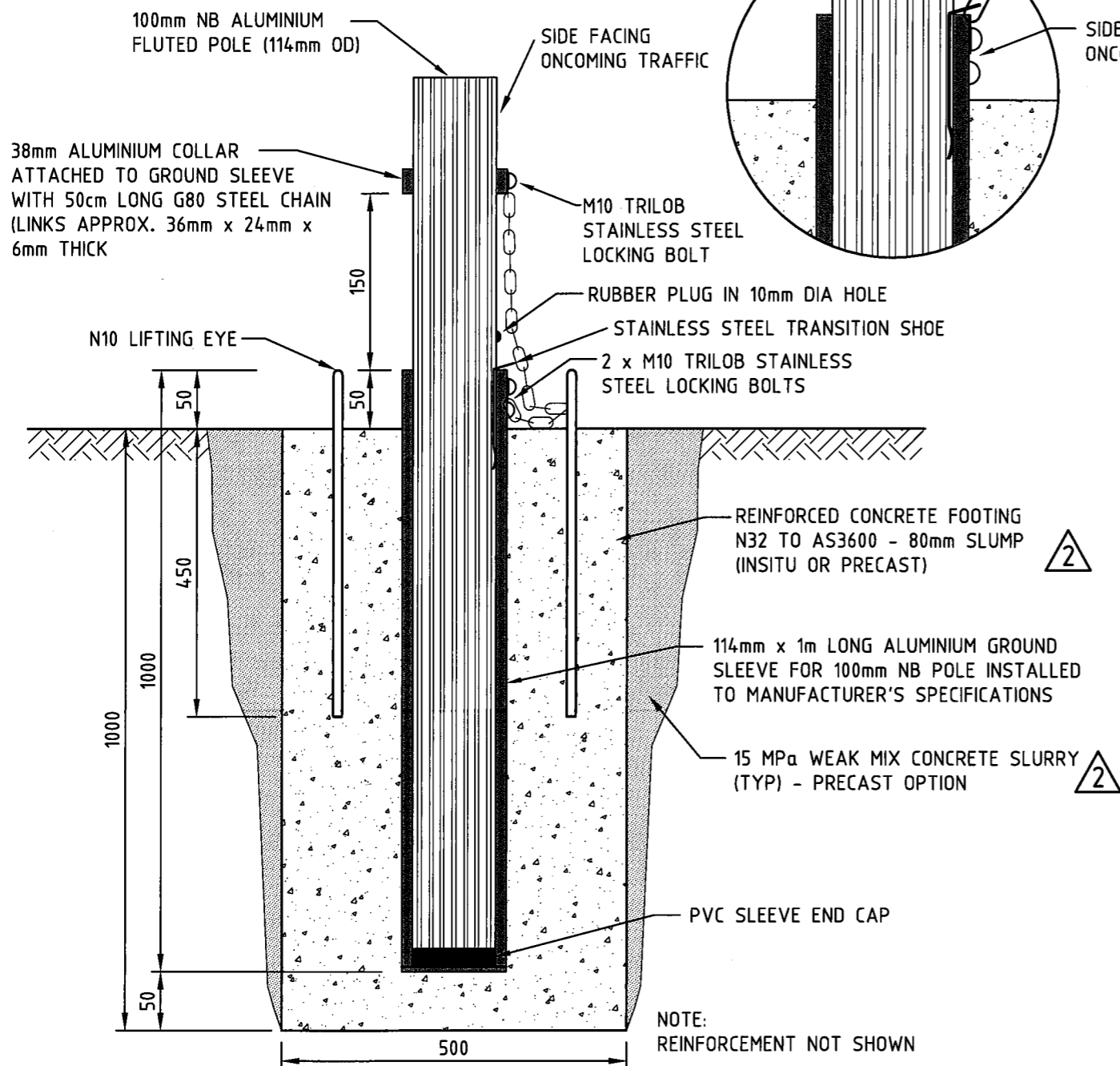
**ELEVATION  
REINFORCEMENT DETAIL**  
N.T.S.



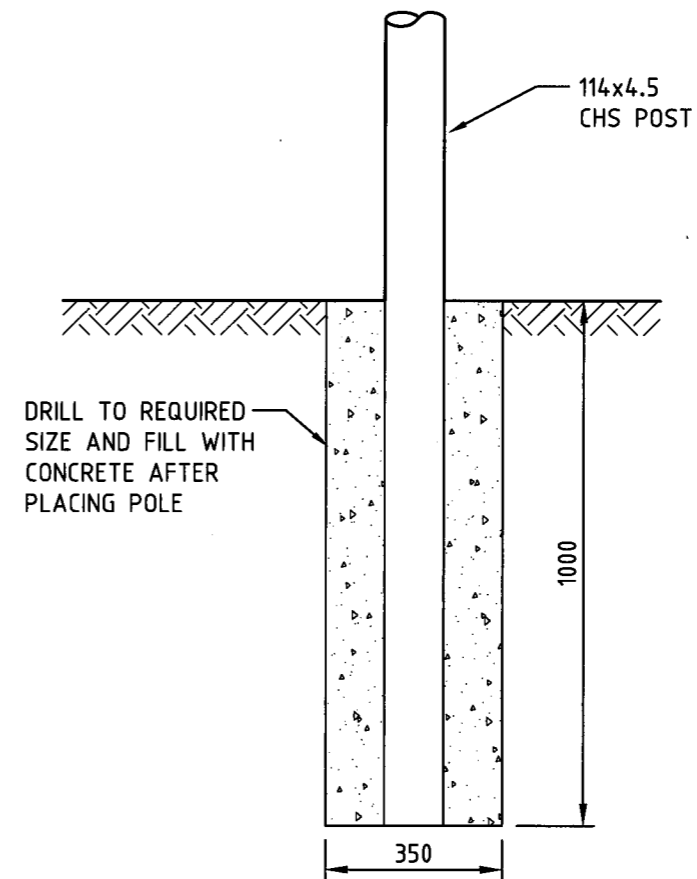
**PLAN**



**PLAN**



**SIGNFIX POLE FOOTING DETAIL**  
N.T.S.



**ELEVATION**

**DIRECT BURIED CHS POSTS DETAIL**

N.T.S.

POST SIZE	HOLE DEPTH (D)	HOLE DIAMETER (DIA)
114x4.5 CHS	900	350

**CONCRETE SPECIFICATION**  
N32 TO AS3600 - 80mm SLUMP

AMENDMENTS		
No.	DESCRIPTION	APPROVED & DATE
1	FOUNDATION FOR SIGNFIX POLE ADDED. FOOTING DIAMETER FOR CHS POST INCREASED.	M.BILLINGS 17.9.13
2	ADDED REINFORCEMENT OPTION, LIFTING EYES AND PRECAST CONCRETE OPTION.	M.BILLINGS 5/2/2014

- NOTES**
- THIS DRAWING TO BE READ IN CONJUNCTION WITH DRAWING No. 201031-0015.
  - CHS POSTS TO BE DN100 MEDIUM STEEL TUBE AS PER AS1074-1989. NOMINAL OD 114mm, THICKNESS 4.5mm.
  - CHS POSTS TO BE MANUFACTURED AND FINISHED IN ACCORDANCE WITH SPECIFICATION 712.
  - ALL DIMENSIONS IN mm.

PLANNING AND TECHNICAL SERVICES  
**ROAD AND TRAFFIC ENGINEERING**  
 WATERLOO CRESCENT EAST PERTH 6004  
 Telephone (08) 9323 4111 Fax (08) 9323 4449

FILE NUMBER	07/1062	
DESIGNED / DRAWN	J. VOKE	4/9/13
VERIFIED	M. BILLINGS	5/9/13
APPROVED	B. SNOOK	5/9/13

**STANDARD DRAWING**

**SIGN FOOTING DETAILS FOR  
VARIABLE SPEED LIMIT SIGNS**

LOCAL AUTHORITY  
DRAWING NUMBER  
**201331-0010-2**

SCALE N.T.S.

DATE A 3