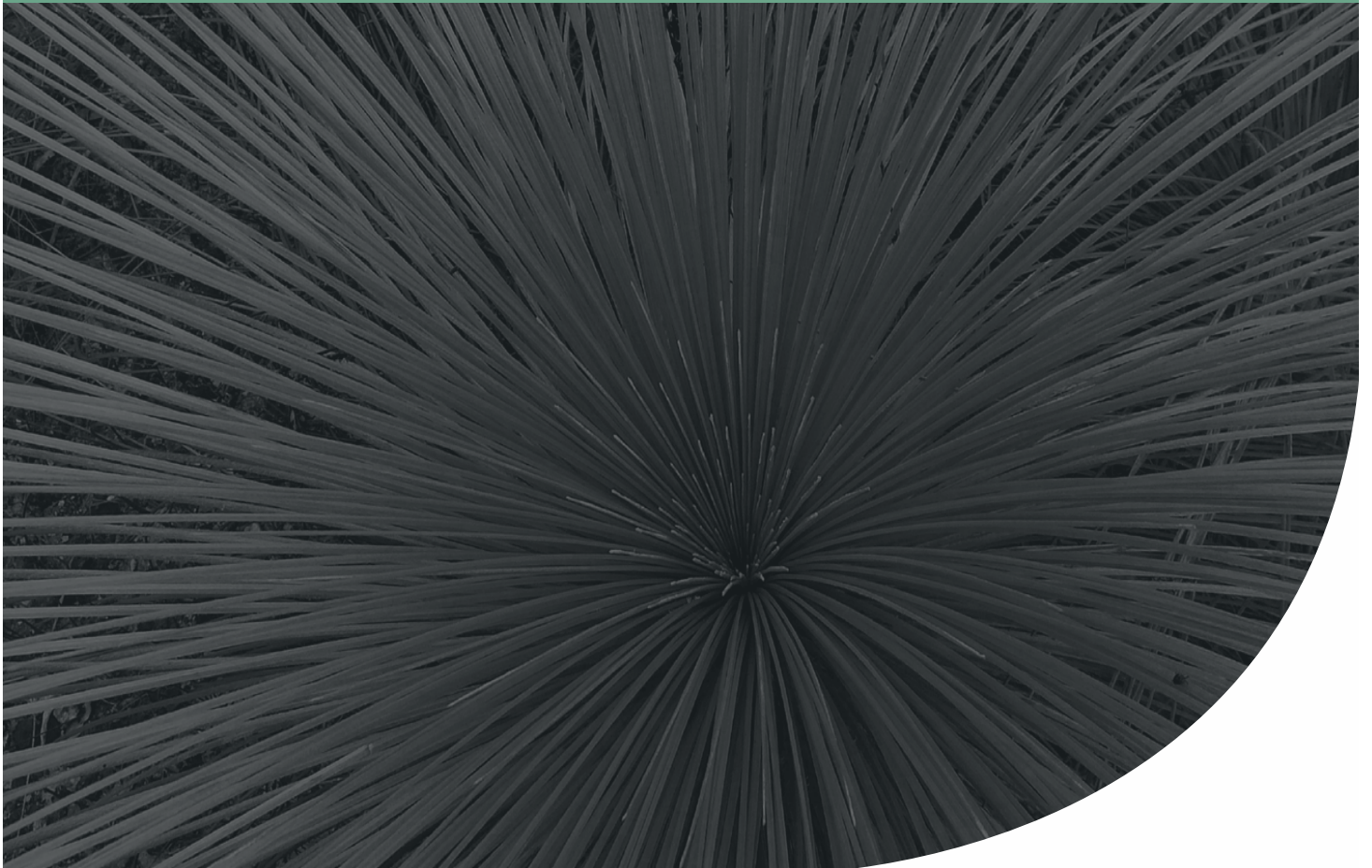


Compliance Assessment Report

NorthLink WA Perth-Darwin National Highway
(Swan Valley Section)

Project No: EP19-111(31)

**Prepared for Main Roads
December 2024**



Compliance Assessment Report

NorthLink WA Perth-Darwin National Highway (Swan Valley Section)



Document Control

Doc name:	Compliance Assessment Report NorthLink WA Perth-Darwin National Highway (Swan Valley Section)				
Doc no.:	EP19-111(31)--137 TB				
Version	Date	Author	Reviewer		
1	November 2024	Toni Burbidge	TB	Tom Atkinson	TAA
	Issued to client				

© 2024 Emerge Associates All Rights Reserved. Copyright in the whole and every part of this document belongs to Emerge Associates and may not be used, sold, transferred, copied or reproduced in whole or in part in any manner or form or in or on any media to any person without the prior written consent of Emerge Associates.

Compliance Assessment Report

NorthLink WA Perth-Darwin National Highway (Swan Valley Section)



Table of Contents

1	Introduction	1
1.1	Project background	1
1.2	Purpose and scope	2
1.3	Compliance Assessment Plan	2
2	Summary of Implementation Status	4
3	Statement of Compliance	5
3.1	Proposal and proponent details	5
3.2	Statement of compliance details	5
3.3	Details of non-compliance(s) and/or potential non-compliance(s)	6
3.4	Proponent declaration	8
3.5	Submission of statement of compliance	8
3.6	Contact information	8
3.7	Post assessment guidelines and forms	8
3.8	Statement of compliance - Attachment 1	9
3.9	Statement of compliance - Attachment 2	10
4	Details of Declared Compliance Status	11
4.1	Summary of compliance	11
4.2	Environmental management plans and offset strategies	11
4.2.1	Condition EMPs (management based)	12
4.2.2	Condition EMPs (outcome based)	17
4.2.3	Other management plans	19
5	Supporting/Verifying Information	29
6	Other Information	30
7	References	31
7.1	General references	31
7.2	Online references	32

List of Tables

Table 1: Compliance Status Terms	9
Table 2: Status of compliance with Condition EMPs (management based)	13
Table 3: Status of compliance with Condition EMPs (outcome based)	18
Table 4: Status of compliance in undertaking the management activities and achieving the environmental objective	20

List of Plates

Plate 1: Project Location	3
Plate 2: Beechboro Road North indicative rehabilitation area.	7

Compliance Assessment Report

NorthLink WA Perth-Darwin National Highway (Swan Valley Section)



Appendices

Appendix A

Compliance Status of Key Characteristics

Appendix B

Ministerial Statements 1036 and 1116 Audit Table

Appendix C

Supporting / Verifying Information

Compliance Assessment Report

NorthLink WA Perth-Darwin National Highway (Swan Valley Section)



1 Introduction

This Compliance Assessment Report (CAR) has been prepared to document compliance with Ministerial Statements No. 1036 (MS 1036) and No. 1116 (MS 1116) issued for implementation of the Perth-Darwin National Highway (Swan Valley Section) under the *Environmental Protection Act 1986* (EP Act). The CAR has been prepared in accordance with Condition 4-6 of MS 1036, as well as the Office of the Environmental Protection Authority (OEPA) Post Assessment Guideline No. 3 – *Post Assessment Guideline for Preparing a Compliance Assessment Report* (OEPA 2012a).

1.1 Project background

The Commissioner for Main Roads Western Australia (MRWA) is the proponent for the Perth-Darwin National Highway (Swan Valley Section; the project). The project is to construct and operate a 38 kilometre (km) dual carriageway highway from the intersection of Tonkin Highway and Reid Highway in Malaga that connects with the Great Northern Highway and Brand Highway in Muchea (**Plate 1**). The project has been constructed in two stages – namely the Central section and Northern section.

The Central section involved construction south of Maralla Road (approximately 17.5 km) and the Northern section involved construction from Maralla Road north to Muchea (approximately 20.5 km). Construction on these main sections commenced in May and September 2017 respectively. It is noted that a small area of construction also occurred near Maralla Road in March 2017 as a separate activity to the Central and Northern sections. Construction was completed on 21 April 2020.

The project was approved to be implemented, subject to conditions, under the EP Act on 23 September 2016 (MS 1036). Since this time, the following changes have been made:

1. On 24 November 2016, a s46 clerical mistake/unintentional error change was made regarding Condition 12-3 such that the Fauna-Construction Condition Environmental Management Plan shall include management actions rather than threshold contingency actions.
2. On 7 June 2017, a s45C change to the proposal was made, specifically:
 - a. Alteration of the development envelope to allow for the construction of additional minor roads and driveways.
 - b. Increase in the development envelope by 19.07 ha from 985 ha to 1,004.07 ha.
 - c. Up to 0.34 ha of native vegetation will be cleared in the additional areas of the development envelope.
3. On 7 November 2017, a change to Condition 16-20 was approved under s46C and included the deletion of Condition 16-20 and replacement with alternate text.
4. On 4 December 2018, a request under s46 was made to remove reference to the Claypans of the Swan Coastal Plain and remove the requirement to vest land with the Conservation and Parks Commission. The EPA report for this Section 46 inquiry was released on 8 October 2019 and a new Ministerial Statement (MS 1116) was released on 20 November 2019 which deleted and replaced Conditions 10, 14 and 16 of MS 1036.
5. On the 7 February 2024, conditions 9-1 and 12-1 were confirmed closed by the Department of Water and Environmental Regulation.
6. On the 7 February 2024, Condition 14 was confirmed closed by the Department of Water and Environmental Regulation.

Compliance Assessment Report

NorthLink WA Perth-Darwin National Highway (Swan Valley Section)



1.2 Purpose and scope

This CAR documents compliance with conditions in MS 1036 and MS 1116 for the period 20 September 2023 to 19 September 2024, in accordance with Condition 4-6 of MS 1036 which states:

The proponent shall submit to the CEO the first Compliance Assessment Report fifteen (15) months from the date of issue of this Statement addressing the twelve (12) month period from the date of issue of this Statement and then annually from the date of submission of the first Compliance Assessment Report, or as otherwise agreed in writing by the CEO.

The Compliance Assessment Report shall:

- *be endorsed by the proponent's Chief Executive Office or a person delegated to sign on the Chief Executive Officer's behalf;*
- *include a statement as to whether the proponent has complied with the conditions;*
- *identify potential non-compliances and describe corrective and preventative actions taken;*
- *be made publicly available in accordance with the approved Compliance Assessment Plan; and*
- *indicate any proposed changes to the Compliance Assessment Plan required by condition 4-1.*

This CAR documents compliance with condition environmental outcomes and condition environmental objectives identified in MS 1036, MS 1116 and the Condition Environmental Management Plans (Condition EMPs).

1.3 Compliance Assessment Plan

This CAR has been developed in accordance with the Compliance Assessment Plan (CAP) (ELA 2018) which was revised and subsequently approved by Department of Water and Environmental Regulation (DWER) on 7 February 2019. The revised and approved CAP is publicly available on the Main Roads website (MRWA 2024).

Compliance Assessment Report

NorthLink WA Perth-Darwin National Highway (Swan Valley Section)



Plate 1: Project Location

Compliance Assessment Report

NorthLink WA Perth-Darwin National Highway (Swan Valley Section)



2 Summary of Implementation Status

Main Roads has completed the construction phase of the project, which is now fully operational and in the post-construction phase. For the reporting period of this CAR (20 September 2023 to 19 September 2024), all components of the project were in the post-construction and operational phases.

Compliance Assessment Report

NorthLink WA Perth-Darwin National Highway (Swan Valley Section)



3 Statement of Compliance

3.1 Proposal and proponent details

Proposal Title	Perth to Darwin National Highway (Swan Valley Section)
Statement Number	Ministerial Statements No. 1036 and No. 1116
Proponent Name	Commissioner for Main Roads Western Australia
Proponent's Australian Company Number (where relevant)	50 860 676 021

3.2 Statement of compliance details

Reporting Period							
20/09/2023 to 19/09/2024							
Implementation phase(s) during reporting period (please ✓ relevant phase(s))							
Pre-construction		Construction		Operation	✓	Decommissioning	
Audit table for Statement addressed in this Statement of Compliance is provided at Attachment:						Appendix B	
<p>An audit table for the Statement addressed in this Statement of Compliance must be provided as Attachment 2 to this Statement of Compliance. The audit table must be prepared and maintained in accordance with the Department of Water and Environmental Regulation (DWER) <i>Post Assessment Guideline for Preparing an Audit Table</i>, as amended from time to time. The 'Status Column' of the audit table must accurately describe the compliance status of each implementation condition and/or procedure for the reporting period of this Statement of Compliance. The terms that may be used by the proponent in the 'Status Column' of the audit table are limited to the Compliance Status Terms listed and defined in Table 1 of Attachment 1.</p>							
Were all implementation conditions and/or procedures of the Statement complied with within the reporting period?							
No (please proceed to Section 3)				Yes (please proceed to Section 4)			
				✓			

Each page (including Attachment 2) must be initialled by the person who signs **Section 3.4** of this Statement of Compliance.
INITIALS:

Compliance Assessment Report

NorthLink WA Perth-Darwin National Highway (Swan Valley Section)



3.3 Details of non-compliance(s) and/or potential non-compliance(s)

The information required in **Section 3.3** must be provided for each non-compliance or potential non-compliance identified during the reporting period covered by this Statement of Compliance.

Non-compliance/potential non-compliance

Which implementation condition or procedure was non-compliant or potentially non-compliant?

There are no non compliances this reporting period.

Was the implementation condition or procedure non-compliance or potentially non-compliance?

On what date(s) did the non-compliance or potential on-compliance occur (if applicable)?

Was this non-compliance or potential non-compliance reported to the Chief Executive Officer, DWER?

<input type="checkbox"/> Yes	<input type="checkbox"/> Reported to DWER verbally	Date	<input type="checkbox"/> No
	<input type="checkbox"/> Reported to DWER in writing	Date	

What are the details of the non-compliance or potential non-compliance and where relevant, the extent of and impacts associated with the non-compliance or potential non-compliance?

What is the precise location where the non-compliance or potential non-compliance occurred (if applicable)? (Please provide this information as a map or GIS co-ordinates).

What was the cause(s) of the non-compliance or potential non-compliance?

What remedial and/or corrective action(s), if any, were taken or are proposed to be taken in response to the non-compliance or potential non-compliance?

What measures, if any, were in place to prevent the non-compliance or potential non-compliance before it occurred? What, if any, amendments have been made to those measures to prevent re-occurrence?

Please provide information/documentation collected and recorded in relation to this implementation condition or procedure:

- In the reporting period addressed in this Statement of Compliance; and
 - As outlined in the approved Compliance Assessment Plan for the Statement addressed in this Statement of Compliance.
- (the above information may be provided as an attachment to this Statement of Compliance.)

Compliance Assessment Report

NorthLink WA Perth-Darwin National Highway (Swan Valley Section)

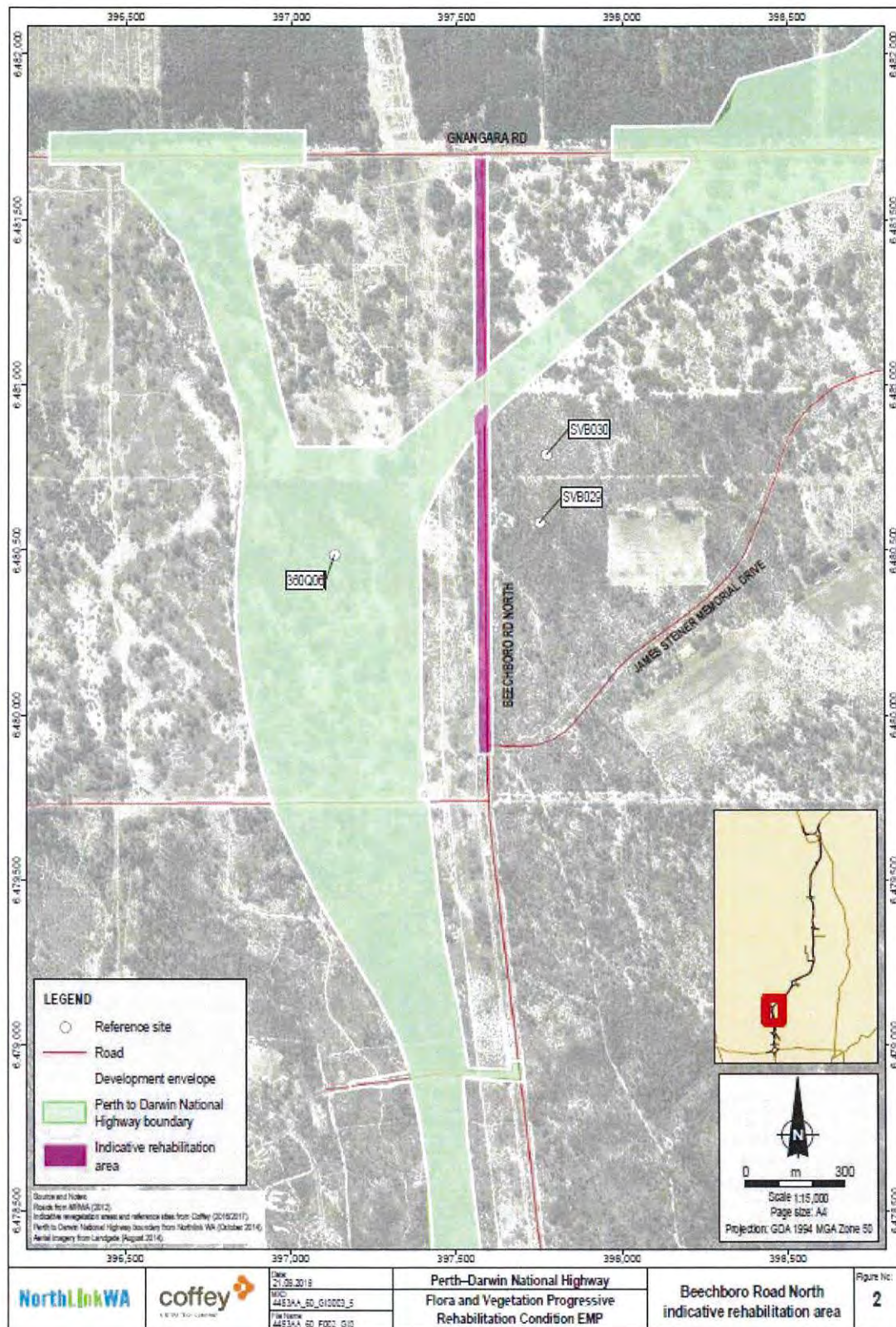


Plate 2: Beechboro Road North indicative rehabilitation area.

MIS

Compliance Assessment Report

NorthLink WA Perth-Darwin National Highway (Swan Valley Section)

**3.4 Proponent declaration**

I, Martine Scheltema, Director Environment and Heritage Main Roads,

declare that I am authorised on behalf of Main Roads Western Australia

(being the person responsible for the proposal) to submit this form and that the information contained in this form is true and not misleading.

Signature: Martine Scheltema Date: 18/12/24

Please note that:

- It is an offence under section 112 of the *Environmental Protection Act 1986* for a person to give or cause to be given information that to his knowledge is false or misleading in a material particular; and
- The Chief Executive Officer of the DWER has powers under section 47(2) of the *Environmental Protection Act 1986* to require reports and information about implementation of the proposal to which the statement relates and compliance with the implementation conditions.

3.5 Submission of statement of compliance

One hard copy and one electronic copy (preferably PDF on CD or thumb drive) of the Statement of Compliance are required to be submitted to the Chief Executive Officer, DWER, marked to the attention of Manager, Compliance (Ministerial Statements).

Please note, the DWER has adopted a procedure of providing written acknowledgment of receipt of all Statements of Compliance submitted by the proponent, however, the DWER does not approve Statements of Compliance.

3.6 Contact information

Queries regarding Statements of Compliance, or other issues of compliance relevant to a Statement may be directed to Compliance (Ministerial Statements), DWER:

Manager, Compliance (Ministerial Statements)

Department of Water and Environmental Regulation

Postal Address: Locked Bag 10
Joondalup DC
WA 6919

Phone: (08) 6364 7000

Email: compliance@dwer.wa.gov.au

3.7 Post assessment guidelines and forms

Post assessment documents can be found at www.dwer.wa.gov.au

Compliance Assessment Report

NorthLink WA Perth-Darwin National Highway (Swan Valley Section)



3.8 Statement of compliance - Attachment 1

Compliance status terms are provided in **Table 1**.

Table 1: Compliance Status Terms

Compliance Status Terms	Abbreviation	Definition	Notes
Compliant	C	Implementation of the proposal has been carried out in accordance with the requirements of the audit element.	This term applies to audit elements with: <ul style="list-style-type: none"> • Ongoing requirements that have been met during the reporting period; and • Requirements with a finite period of application that have been met during the reporting period, but whose status has not yet been classified as 'completed'.
Completed	CLD	A requirement with a finite period of application has been satisfactorily completed.	This term may only be used where: <ul style="list-style-type: none"> • Audit elements have a finite period of application (e.g. construction activities, development of a document); • The action has been satisfactorily completed; and • The DWER has provided written acceptance of a 'completed' status for the audit element.
Not required at this stage	NR	The requirements of the audit element were not triggered during the reporting period.	This should be consistent with the 'Phase' column of the audit table.
Potentially Non-Compliant	PNC	Possible or likely failure to meet the requirements of the audit element.	This term may apply where during the reporting period the proponent has identified a potential non-compliance and has not yet finalised its investigations to determine whether non-compliance has occurred.
Non-Compliant	NC	Implementation of the proposal has not been carried out in accordance with the requirements of the audit element.	This term applies where the requirements of the audit element are not "complete" have not been met during the reporting period.
In Process	IP	Where an audit element requires a management or monitoring plan be submitted to the DWER or another government agency for approval, that submission has been made and no further information or changes have been requested by the DWER or the other government agency and assessment by the DWER or other government agency for approval is still pending.	<p>The term 'In Process' may not be used for any purpose other than that stated in the Definition Column.</p> <p>The term 'In Process' may not be used to describe the compliance status of an implementation condition and/or procedure that requires implementation throughout the life of the project (e.g. implementation of a management plan).</p>

Compliance Assessment Report

NorthLink WA Perth-Darwin National Highway (Swan Valley Section)



3.9 Statement of compliance - Attachment 2

An audit table for the Statement addressed in this Statement of Compliance must be provided as Attachment 2.

The audit table is provided in **Appendix B**. The audit table has been prepared and maintained in accordance with the OEPA's *Post Assessment Guideline for Preparing an Audit Table* (OEPA 2012b). The 'Status Column' of the audit table accurately describes the compliance status of each implementation condition and/or procedure for the reporting period of this Statement of Compliance (20 September 2023 to 19 September 2024). The terms that have been used in the 'Status Column' of the audit table are limited to the Compliance Status Terms listed and defined in **Table 1** above.

A handwritten signature in blue ink, appearing to be 'MCS'.

Compliance Assessment Report

NorthLink WA Perth-Darwin National Highway (Swan Valley Section)



4 Details of Declared Compliance Status

4.1 Summary of compliance

Compliance with the Key Characteristics of the Proposal are provided in **Appendix A**.

Compliance with the conditions of MS 1036 and MS 1116 are outlined in the audit table provided in **Appendix B**, in accordance with the CAP and the DWER's Statement of Compliance.

In summary, there was no non-compliance with the conditions of MS 1036 and MS 1116.

4.2 Environmental management plans and offset strategies

The following management plans and/or offsets strategies are required to be implemented by MS 1036/MS 1116, have been approved by DWER, and were therefore in effect during this reporting period except where noted below:

- Condition 9 (MS 1036): Flora and Vegetation – Construction Condition Environmental Management Plan (Rev 5, February 2019) (Coffey 2019c) – Note this has been completed with the completion of Condition 9-1 (February 2024).
- Condition 10 (MS 1116): Flora and Vegetation – Indirect Impacts and Threatened Flora and Communities Condition Environmental Management Plan (Rev 5, January 2020) (Coffey 2020b)
- Condition 11 (MS 1036): Flora and Vegetation – Progressive Rehabilitation Condition Environmental Management Plan (Rev 4, August 2018) (Coffey 2018b)
- Condition 12 (MS 1036): Fauna – Construction Condition Environmental Management Plan (Rev 4, January 2019) (Coffey 2019b) Note this has been completed with the completion of Condition 12-1 (February 2024).
- Condition 13 (MS 1036): Inland Waters Environmental Quality – Hydrological Processes Condition Environmental Management Plan (Rev 7, January 2019) (Coffey 2019d)
- Condition 14 (MS 1116): Flora and Vegetation – Inland Waters Condition Environmental Management Plan (Rev 10, January 2020) (Coffey 2020a) - Note this has been completed with the completion of Condition 14 (February 2024).
- Condition 15 (MS 1036): Amenity (Noise) Condition Environmental Management Plan (Rev 4, November 2018) (Coffey 2018a)
- Condition 16 (MS 1116): Ippolo Road Site Land Acquisition and Management Plan (Rev 2, January 2017) (Coffey 2017)
- Condition 16 (MS 1116): *Caladenia huegelii* Habitat Management Plan (Rev 5, January 2019) (Coffey 2019a)
- Condition 16 (MS 1116): Land Acquisition and Rehabilitation Offsets Strategy (Rev 3, December 2018) (Coffey 2018c)
- Condition 16 (MS 1116): SCP 20a Offsets Strategy (Rev 4, May 2019) (Coffey 2019e).

The most recent approved management plans and offsets strategies are publicly available on the Main Roads website (MRWA 2023).

Compliance Assessment Report

NorthLink WA Perth-Darwin National Highway (Swan Valley Section)



The majority of the management plans are required to have their performance assessed for compliance against the MS conditions and reported in the CAR. The Condition EMPs are either management based (**Section 4.2.1**) or outcome based (**Section 4.2.2**).

The Ippolo Road Site Land Acquisition and Management Plan and the *Caladenia huegelii* Habitat Management Plan are not Conditional EMPs and do not contain management targets. Assessment of compliance against these two plans is therefore limited to the implementation of the management activities in achieving the environmental objectives or outcomes. These two management plans are addressed separately in **Section 4.2.3**.

The Land Acquisition and Rehabilitation Offsets Strategy and SCP20a Offsets Strategy, whilst not management plans, are required to have their performance assessed for compliance against the MS Conditions and reported in the CAR. The offset strategies are addressed in **Section 4.2.3**.

A register of supporting evidence is provided in **Appendix C**. If required, further evidence can be provided upon request. This is discussed further in **Section 5**.

4.2.1 Condition EMPs (management based)

The following plans are management-based Condition EMPs:

- Flora and Vegetation – Construction Condition Environmental Management Plan (Condition 9) – completed and no longer required.
- Flora and Vegetation – Indirect Impacts and Threatened Flora and Communities Condition Environmental Management Plan (Condition 10)
- Flora and Vegetation – Progressive Rehabilitation Condition Environmental Management Plan (Condition 11)
- Fauna – Construction Condition Environmental Management Plan (Condition 12) – completed and no longer required.
- Amenity (Noise) – Condition Environmental Management Plan (Condition 15).

The management-based Condition EMPs have been assessed for compliance in achieving the environmental objectives (through assessment of whether relevant management targets are met), as well as being assessed for compliance with the MS conditions (**Table 2**).

For the 2024 CAR reporting period, the project is in the post-construction/operational phase and therefore the relevant elements of the Condition EMPs requiring assessment is limited to the post-construction monitoring requirements. Pre-construction or construction elements (management actions and monitoring) have been previously completed and assessed as part of previous CARs and therefore are not applicable to the 2024 CAR reporting period.

Compliance Assessment Report

NorthLink WA Perth-Darwin National Highway (Swan Valley Section)



Table 2: Status of compliance with Condition EMPs (management based)

Condition environmental objective or outcome set in the Condition EMP or in MS 1036/MS 1116	Reporting on the management objectives and management annually, commencing 12 months from date of issue	Status
Key environmental factor: Flora and Vegetation MS 1036, Conditions 9-1, 9-8 and 9-9 Condition EMP: Flora and Vegetation – Construction		
Condition environmental objective 9-1(1) (MS 1036): To ensure that <i>Phytophthora cinnamomi</i> is not introduced into disease free areas by construction activities during construction.	DWER advised 7 February 2024 that in accordance with Condition 7-3(2) of MS 1036 that MRWA has met the requirements of conditions 9-1 and 12-1 of MS 1036 and the implementation of the FVC CEMP and F-C CEMP may cease.	CLD
Condition environmental objective 9-1(2) (MS 1036): To ensure that impacts to flora and vegetation from dust are minimised as far as practicable during construction.	DWER advised 7 February 2024 that in accordance with Condition 7-3(2) of MS 1036 that MRWA has met the requirements of conditions 9-1 and 12-1 of MS 1036 and the implementation of the FVC CEMP and F-C CEMP may cease.	CLD
Condition environmental objective 9-1(3) (MS 1036): To ensure that impacts to flora and vegetation from the introduction or spread of weeds are minimised as far as practicable during construction.	DWER advised 7 February 2024 that in accordance with Condition 7-3(2) of MS 1036 that MRWA has met the requirements of conditions 9-1 and 12-1 of MS 1036 and the implementation of the FVC CEMP and F-C CEMP may cease.	CLD
Condition 9-8 (MS 1036): The proponent shall not undertake clearing or construct any laydown areas or stockpiles within the 50 m buffer of <i>Caladenia huegelii</i> , as delineated in Figure 2 of Schedule 1 and defined by geographic coordinates in Schedule 2.	DWER advised 7 February 2024 that in accordance with Condition 7-3(2) of MS 1036 that MRWA has met the requirements of conditions 9-8 and 9-9 of MS 1036 and these conditions are now considered completed.	CLD
Condition 9-9 (MS 1036): The proponent shall not undertake clearing or construct any laydown areas or stockpiles within the 10 m buffer, as delineated in figure 3 of Schedule 1 and defined by geographic coordinates in Schedule 2, of: <ul style="list-style-type: none"> • <i>Grevillea curviloba</i> subsp. <i>incurva</i>; and • <i>Darwinia foetida</i> 	DWER advised 7 February 2024 that in accordance with Condition 7-3(2) of MS 1036 that MRWA has met the requirements of conditions 9-8 and 9-9 of MS 1036 and these conditions are now considered completed.	CLD
Key environmental factor: Flora and Vegetation MS 1116, Conditions 10-1 and 10-2 Condition EMP: Flora and Vegetation – Indirect Impacts and Threatened Flora and Communities		
Condition environmental objective 10-1(1) (MS 1116): To ensure that indirect impacts, including but not limited to weeds, unauthorised access, increased fire risk and litter, changes to surface water regimes, to flora and	MRWA wrote to DWER to request completion of Condition 10 of MS1116 under the IITFC CEMP. DWER advised 7 February 2024 that in accordance with Condition 7-3(2) of MS 1036 that MRWA is still required to continue to implement Condition 10 IITFC CEMP. DWER considers the Condition 10 IITFC CEMP required by MS1116 still applies and the proposal should continue to be managed to meet the environmental objectives of this condition	Compliant MRWA will re-assess this condition and request with DWER that it be

Compliance Assessment Report

NorthLink WA Perth-Darwin National Highway (Swan Valley Section)



Condition environmental objective or outcome set in the Condition EMP or in MS 1036/MS 1116	Reporting on the management objectives and management annually, commencing 12 months from date of issue	Status
<p>vegetation, including but not limited to <i>Caladenia huegelii</i> habitat, <i>Grevillea curviloba</i> subsp. <i>incurva</i>, <i>Darwinia foetida</i>, Conservation Category Wetlands and Communities of Tumulus Springs (Organic Mound Springs, Swan Coastal Plain) are minimised as far as practicable.</p>	<p>Emerge Associates undertook the required post-construction monitoring on multiple days in October, November and December 2023 and multiple days in March and July 2024. (R24_08)</p> <p>Supporting evidence demonstrating compliance with post-construction environmental objectives 10-1(1) of MS 1116 and showing all targets of the IITFC CEMP have been met are as follows:</p> <ul style="list-style-type: none"> • No evidence of indirect impact to native cover, native species richness or weeds more than 10 m from the new edge of native vegetation adjacent to Communities of Tumulus Springs (Organic Mound Springs, Swan Coastal Plain) and Conservation Category Wetlands was recorded. Changes in native cover, native species richness or weeds were recorded in some transects. • No evidence of indirect impact to native cover, native species richness or weeds more than 10 m from the new edge of native vegetation in areas of <i>Caladenia huegelii</i> habitat. • The two individuals of <i>Grevillea curviloba</i> subsp. <i>incurva</i> in the Brand Highway road reserve at Muchea identified within the CEMP were maintained, and the population increased to four • The number of individuals of <i>Darwinia foetida</i> in the Great Northern Highway road reserve at Muchea was maintained, and the population increased from 26 to 86. • The condition of remaining extent of SCP20a as shown in Figure 4 of Ministerial Statement 1036 was maintained or improved <p>The condition environmental objectives and management targets for the project outlined in the IITFC CEMP were met during the reporting period.</p>	considered completed.
<p>Condition environmental objective 10-1(2) (MS 1116): To maintain or improve the condition of the remaining extent of SCP 20a as shown in Figure 4 of Ministerial Statement 1036, through implementation of the Flora and Vegetation – Indirect Impacts and Threatened Flora and Communities – Condition Environmental Management Plan approved by the CEO.</p>	<p>MRWA wrote to DWER to request completion of Condition 10 of MS1116 under the IITFC CEMP. DWER advised 7 February 2024 that in accordance with Condition 7-3(2) of MS 1036 that MRWA is still required to continue to implement Condition 10 IITFC CEMP. DWER considers the Condition 10 IITFC CEMP required by MS1116 still applies and the proposal should continue to be managed to meet the environmental objectives of this condition</p> <p>Emerge Associates undertook the required post-construction monitoring on multiple days in October, November and December 2023 and multiple days in March and July 2024. (R24_08)</p> <p>The monitoring determined that the condition of remaining extent of SCP20a as shown in Figure 4 of Ministerial Statement 1036 was maintained or improved (R24_08)</p> <p>Relevant management target/s and associated environmental objective met for reporting period.</p>	Compliant MRWA will reassess this condition and request with DWER that it be considered completed.

Compliance Assessment Report

NorthLink WA Perth-Darwin National Highway (Swan Valley Section)



Condition environmental objective or outcome set in the Condition EMP or in MS 1036/MS 1116	Reporting on the management objectives and management annually, commencing 12 months from date of issue	Status
Key environmental factor: Flora and Vegetation, MS 1036 Conditions 11-1 and 11-6 Condition EMP: Flora and Vegetation – Progressive Rehabilitation Condition Environmental Management Plan		
Condition environmental objective 11-1(1) (MS 1036): To progressively rehabilitate the area of native vegetation cleared as a result of implementation of the proposal that are no longer required for construction activities or not required for ongoing operations.	No areas of native vegetation within the development envelope were temporarily cleared and therefore no management actions are required in relation to Condition 11-1(1), as outlined in Section 2.3 of the CEMP. No clearing solely for temporary activities was conducted, therefore this environmental objective is met as described in the Flora and Vegetation – Progressive Rehabilitation CEMP.	Compliant
Condition environmental objective 11-1(2) (MS 1036): To rehabilitate the section of Beechboro Road North from Jules Steiner Memorial Drive to Gngara Road within twelve months of decommissioning this section of road.	<p>Main Roads commenced rehabilitation of the redundant section of Beechboro Road North in August 2019 (within 12 months of decommissioning), in accordance with Condition 11-1(2), with practical completion of revegetation works achieved in late 2019.</p> <p>Ecoscape undertook post-revegetation monitoring in summer 2022 (3rd year of monitoring), which determined that five of the seven completion criteria had not been met. Further monitoring in 2023 and 2024 by Gambara (R24_07) indicated that respective completion criteria were again not met.</p> <p>DWER was notified of this failure to achieve completion criteria, and accordingly Management Target 2 of the CEMP, initially in November 2022 in accordance with Condition 7-4.</p> <p>The failure to achieve the management target is due to difficult site conditions, which includes poor seed germination within in-situ soils, extreme heat and heavy predation by local fauna. The ongoing lack of success at this site is largely due to predation by kangaroos and to a lesser extent by rabbits.</p> <p>Main Roads has previously reported a potential non-compliance with the status of Condition 11.1(2), however following subsequent review of the compliance status of Condition 11.1(2), it has identified that it is compliant as the rehabilitation via implementation of the plan was undertaken. However as the completion criteria (and subsequently Management Target 2) have not been met, the appropriate management actions have been applied consistent with the proposed adaptive management protocols outlined in the CEMP.</p> <p>Main Roads has implemented a range of additional rehabilitation management actions with the aim of achieving the outstanding completion criteria, such that the management target can be met. This has included the installation of 435m of fauna exclusion fencing and an additional 5,776 infill plants in July 2022 as a trial to see if this protects planting from predation. An additional 832 infill plants were installed in August 2024 (by Gambara) within and adjacent to the fenced areas.</p> <p>Main Roads will continue to implement management actions as required to achieve the completion criteria.</p>	Compliant

Compliance Assessment Report

NorthLink WA Perth-Darwin National Highway (Swan Valley Section)



Condition environmental objective or outcome set in the Condition EMP or in MS 1036/MS 1116	Reporting on the management objectives and management annually, commencing 12 months from date of issue	Status
Key environmental factor: Fauna MS 1036, Condition 12-1 Condition EMP: Fauna – Construction		
Condition environmental objective 12-1(1) (MS 1036): To ensure that impacts to conservation significant fauna are minimised as far as practicable during final design and construction of the proposal.	DWER advised 7 February 2024 that in accordance with Condition 7-3(2) of MS 1036 that MRWA has met the requirements of conditions 9-1 and 12-1 of MS 1036 and the implementation of the FVC CEMP and F-C CEMP may cease.	Completed
Key environmental factor: Amenity (Noise) MS 1036, Condition 15-1 Condition EMP: Amenity (Noise)		
Condition environmental objective 15-1(1) (MS 1036): To ensure that impacts to the noise amenity of existing sensitive receptors delineated in Figure 7 of Schedule 1 [of the Ministerial Statement] and defined by geographic coordinates in Schedule 2 [of the Ministerial Statement], as a result of the ongoing operation of the proposal are minimised as low as reasonably practicable.	<p>The CEMP management target for this objective is '<i>affected landowners delineated in Figure 7 of Schedule 1 of the Ministerial Statement have been provided with property-specific noise mitigation packages as negotiated and agreed to by the landowner and MRWA.</i>'</p> <p>Main Roads liaised with all landowners identified in Figure 7 to provide suitable noise mitigation packages, as reported in previous years CARs.</p> <p>Main Roads are required to maintain a noise complaints resolution process for a period of 5 years after implementation, as part of the post-construction monitoring framework. Main Roads has a corporate wide customer relationship management system CONNECT. It is used to record all customer enquiries, requests and complaints. Any complaints are recorded in CONNECT and forwarded to the responsible officer.</p> <p>For Northlink noise complaints, MRWA's Stakeholder and Communications Consultant has been engaging with the community to manage those complaints. No complaints for the Northlink project have been received during the reporting period.</p>	<p>Compliant</p> <p>MRWA will request DWER for completion and closure of this condition in 2025 based on positive results of five years of monitoring.</p>
Condition environmental objective 15-1(2) (MS 1036): To ensure that the impacts to the noise amenity of existing sensitive receptors, are consistent with section 5.3 of State Planning Policy 5.4 for properties south of Maralla Road.	<p>The CEMP management target for this objective is '<i>Outdoor noise for properties south of Maralla Road during operation is below 60 dB(A) Laeq (day) during the day (6.00 a.m. to 10.00 p.m.) and below 55 dB(A) Laeq (night) at night (10.00 p.m. to 6.00 a.m.) as prescribed in section 5.3 of State Planning Policy 5.4.</i>'</p> <p>A Noise Monitoring Report (Lloyd George Acoustics, January 2024) was commissioned by MRWA to comply with the CEMP Amenity (Noise), (Coffey, Ecological, November 2018). (R24-01).</p> <p>The results of 2023 monitoring and assessment show that the noise mitigation designed for the Tonkin Highway Northlink WA Stage 2 (Central Section) Project, Benara Drive to Ellenbrook (North of The Promenade) achieves compliance with the SWTC Noise Level Objectives at all observed locations. (R24-01)</p>	Compliant

Compliance Assessment Report

NorthLink WA Perth-Darwin National Highway (Swan Valley Section)



4.2.2 Condition EMPs (outcome based)

The following plans are outcome based (rather than management based) EMPs:

- Inland Waters Environmental Quality – Hydrological Processes Condition Environmental Management Plan (Condition 13)
- Flora and Vegetation – Inland Waters – Condition Environmental Management Plan (Condition 14). completed and no longer required.

The outcome-based Condition EMPs have been assessed for compliance in achieving the environmental outcomes (through assessment of whether relevant environmental criteria are met), as well as being assessed for compliance with the MS conditions (**Table 3**).

For the 2024 CAR reporting period, the project is in the 'post-construction/operational' phase and therefore the relevant elements of the Condition EMPs requiring assessment is limited to the post-construction monitoring requirements. 'Pre-construction' or 'construction' elements (management actions and monitoring) have been previously completed and assessed as part of previous CARs and therefore are not applicable to the 2024 CAR reporting period. Emerge Associates are implementing the post-development monitoring program, as specified in each CEMP.

Compliance Assessment Report

NorthLink WA Perth-Darwin National Highway (Swan Valley Section)



Table 3: Status of compliance with Condition EMPs (outcome based)

Condition Environmental Outcome	Reporting on Threshold Criteria	Status
Key environmental factor: Inland Waters Environmental Quality MS 1036, Condition 13-1, 13-8 to 13-10. Condition EMP: Inland Waters Environmental Quality – Hydrological Processes		
Condition environmental outcome 13-1(1) (MS 1036): The construction and operation of the proposal shall not result in an acceptable decline in water quality of the Gngangara Underground Water Pollution Control Area (GUWPCA).	In accordance with the CEMP, annual post-construction monitoring is required for a period of five years. Emerge Associates undertook monitoring in March 2024 (R24-04). Exceedances of some threshold criteria were recorded during the 2024 monitoring program; however, none were determined as being likely to be attributable to the operation activities of the project. The exceedances were assessed as non-project attributable based on surrounding land uses likely contributing, sampling locations being upgradient of the development envelope and analyte exceedances not showing concentrations trending upward. (R24-04). All environmental criteria were determined to be met and as such all environmental outcomes were achieved for the reporting period. A letter from MRWA to DWER (31 May 2024) was provided to report the exceedances under Condition 8-4 of MS 1036 explaining the above.	Compliant
Condition environmental outcome 13-1(2) (MS 1036): The construction and operation of the proposal shall not result in an unacceptable decline in water quality of the Ellen Brook as confirmed by monitoring for a period of 5 years post construction.		
Condition 13-8: The proponent shall not construct any laydown areas, stockpiles, or store chemicals within the well head protection zones in the GUWPCA.	Construction activities have ceased and as provided within the 2020 CAR, the proponent has not constructed any laydown areas, stockpiles or stored chemicals within the wellhead protection zones of the GUWPCA.	Compliant
Condition 13-9: Any fuel or chemicals stored within the GUWPCA shall: <ul style="list-style-type: none"> • Be contained within double-lined fuel storage tanks. • Not exceed an individual storage tank capacity of 5,000 L. • Be placed in bunds capable of storing 125% of the capacity of the largest storage tank. • Not be located within well head protection zones. 	All chemical storage locations were decommissioned prior to commencement of the reporting period.	Compliant
Condition 13-10: The proponent shall not construct infiltration basins, including bio-retention basins, within 100 m of drinking water production wells within the GUWPCA.	As detailed within the 2020 CAR no infiltration basins, including bio-retention basins, have been constructed within 100 m of drinking water production wells within the GUWPCA.	Compliant
Key environmental factor: Flora and Vegetation MS 1116, Condition 14-1 Condition EMP: Flora and Vegetation – Inland Waters		
Condition environmental outcome 14-1(1) (MS 1116): Construction and operation of the proposal, including from dewatering and groundwater abstraction, does not result in indirect impacts to Communities of Tumulus Springs (Organic Mound Springs, Swan Coastal Plain) and Conservation Category Wetlands as shown in Figure 5	DWER provided a response to MRWA's request to complete Condition 14 of MS1116 on 7 February 2024. (L24_02) DWER noted that MRWA undertook three (3) years of monitoring during construction and an additional three (3) years post construction monitoring after the proposal became operational 23 April 2020.	CLD.

Compliance Assessment Report

NorthLink WA Perth-Darwin National Highway (Swan Valley Section)



Condition Environmental Outcome	Reporting on Threshold Criteria	Status
of Ministerial Statement 1036 and Figure 6 attached to this Statement.	DWER therefore determined that in accordance with condition 8-3(2) of MS1036, MRWA has met the requirements of Condition 14-1 of MS 1116 and implementation of the approved FV-IW CEMP may cease.	
Condition environmental outcome 14-1(2) (MS 1116): Construction of the proposal maintains predevelopment surface water flows to <i>Darwinia foetida</i> , Communities of Tumulus Springs (Organic Mound Springs, Swan Coastal Plain) and Conservation Category Wetlands as shown in Figures 3 and 5 of Ministerial Statement 1036 and Figure 6 attached to this Statement.		
Condition 14-6 (MS 1116): The proponent shall not construct laydown areas or stockpiles within 50 m of Communities of Tumulus Springs (Organic Mound Springs, Swan Coastal Plain) and Conservation Category Wetlands as shown in Figures 5 of Ministerial Statement 1036 and Figure 6 attached to this Statement [MS 1116].	DWER provided a response to MRWA's request to complete Condition 14 of MS1116 on 7 February 2024. (L24_02) DWER noted that MRWA undertook three (3) years of monitoring during construction and an additional three (3) years post construction monitoring after the proposal became operational 23 April 2020. DWER therefore determined that in accordance with condition 8-3(2) of MS1036, MRWA has met the requirements of Condition 14-1 of MS 1116 and implementation of the approved FV-IW CEMP may cease.	CLD

4.2.3 Other management plans

The following plans are not Condition EMPs and are therefore addressed separately:

- The Ippolo Road Site Land Acquisition and Management Plan.
- The *Caladenia huegelii* Habitat Management Plan.
- The Land Acquisition and Rehabilitation Offsets Strategy.
- SCP20a Offsets Strategy.

Assessment of compliance against these plans is limited to assessing whether the overall environmental objective is being met through the implementation of the management activities (conforming, potentially non-conforming or non-conforming) provided in these plans (**Table 4**). Assessment of compliance of these plans against the MS conditions is provided in the audit table in **Appendix B**.

It is noted that Main Roads have developed these plans and set up a funding arrangement (Memorandum of Understanding [MoU]) with DBCA, in accordance with the MS 1036 conditions as outlined in **Appendix C**. Additional funds were also provided to DBCA in relation to management under the MOU.

In summary, Main Roads are conforming with implementation of the plans, including a few management actions which are still in process with some activities following through until 2026. There were no non-conformances or potential non-conformances with the above-mentioned plans and strategies during the reporting period.

Compliance Assessment Report

NorthLink WA Perth-Darwin National Highway (Swan Valley Section)



Table 4: Status of compliance in undertaking the management activities and achieving the environmental objective

Management activities	Timeframe	Status and Justification
Ippollo Road Site Land Acquisition and Management Plan, MS 1116 Condition 16-2 to 16-7 Environmental Objective: To counterbalance the significant residual impact to: <ul style="list-style-type: none"> • 7.65 ha of A Class Nature Reserves; • 2020 ha of Carnaby's Cockatoo (<i>Calyptorhynchus latirostris</i>) foraging habitat; and • 99.1 ha of Forest Red-tailed Black Cockatoo (<i>Calyptorhynchus banksia naso</i>) foraging habitat. 		
The status of the following is "Completed" and as such based on commitment of management activities during 2017-2023 (Section 4.2 of the <i>Ippollo Road Site Land Acquisition and Management Plan</i> (2017)). MRWA will be seeking closure of these requirements in 2025.		
Install nature reserve signage	2017	Completed Reserve inspections are completed by DBCA staff at Ippollo every few months. These inspections check on fences, signage, and evidence of illegal activities. (E24_04)
Install <i>Phytophthora cinnamomi</i> dieback signage	2017	Completed
Track closure and maintenance	2017-2023	Completed Reserve inspections are completed by DBCA staff at Ippollo every few months. These inspections check on fences, signage, and evidence of illegal activities. No track work was completed in the last financial year and a reserve inspection would be required to ensure appropriate tracks have been closed and remain unused. (E24_04)
Gate maintenance	2017	Completed
Remove rubbish	2017	Completed Reserve inspections are completed by DBCA staff at Ippollo every few months. These inspections check on fences, signage, and evidence of illegal activities. (E24_04)
Feral animal monitoring and control (wild deer and feral pigs)	2017-2023	Completed Feral Bee Management has been undertaken. Other feral animal control and monitoring was not undertaken last financial year (R24_09)(E24_04).
Survey and control of feral bees in black cockatoo habitat areas	2017, 2018, 2021, 2023	Completed Feral Bee control and monitoring occurred. (R24_09)
<i>Phytophthora cinnamomi</i> dieback re-survey and treatment	2018 and 2021	Completed

Compliance Assessment Report

NorthLink WA Perth-Darwin National Highway (Swan Valley Section)



Land Acquisition and Rehabilitation Offsets Strategy, MS 1116 Conditions 16-8 to 16-11

Environmental objective: To counterbalance the significant residual impacts to:

- 5.5 hectares of Yanga Complex.
- 129.9 hectares of Bush Forever sites.
- 5.2 hectares of *Calyptorhynchus latirostris* (Carnaby's black cockatoo) foraging habitat.
- 21.4 hectares of *Calyptorhynchus banksii naso* (forest red-tailed black cockatoo) foraging habitat.
- 16 hectares of Conservation Category Wetlands.

Lot 806 Brand Highway

Develop a Rehabilitation Plan	December 2019	Completed
Implement the Rehabilitation Plan	Within 12 months of the completion of construction/ongoing	Completed Implementation (revegetation works) occurred in July 2020.
Completion of Rehabilitation (meets completion criteria)	Five years from commencement of rehabilitation	<p>A 2024 spring monitoring report was completed by Gambara for MRWA (September 2024) for Lot 806 Brand Highway. (R24_06).</p> <p>The site has met 2 of completion criteria being erosion and native foliage cover. The challenge for the site is weed control including a focus on two-leafed cape tulip. The main recommendation of the report is to increase weed control and some targeted infill works although it was noted that weed coverage had marginally decreased in the site since the 2023 monitoring.</p> <p>Ongoing management actions continue to be implemented toward reaching completion criteria by nominated timeframe. Historically, this has included installation of infill planting in Winter 2021, Winter 2022 and Winter 2023. Revegetation monitoring was completed in spring 2023 and 2024, which identified that the completion criteria is on track and recommended various management actions to assist in working toward achieving the remaining criteria in the target timeframe. (R24_06)</p>

Compliance Assessment Report

NorthLink WA Perth-Darwin National Highway (Swan Valley Section)



Bush Forever Site 300 Maralla Road Bushland – all of the below are referenced by evidence document R24_12 which is the *Caladenia hugeleii* management plan actions.

Commencement of implementation of this plan	Prior to commencement of construction	Completed
Agreement of MoU	Within 6 months of approval of this plan	Completed MoU signed July 2019
Provision of cable fencing and heavy-duty gates	By December 2019	Completed Cable fencing and heavy-duty gates installed October 2018
Map weeds within Bush Forever 300	By December 2019	Completed Baseline weed mapping completed between October – December 2017.
Develop a weed control program for Bush Forever 300.	By December 2019	Completed Weed management plan prepared May 2018
Implement weed control program.	Commenced by June 2020	Completed Weed control undertaken for 4 years (2018-2021) MRWA engaged NAMS to undertake weed mapping survey in December 2021 which determined that the 80% weed reduction completion criteria had been achieved.
<i>Phytophthora cinnamomi</i> mapping	By December 2019 and December 2021	Completed Initial mapping completed December 2017, with follow up mapping completed 2019. Final dieback mapping completed by DBCA in April and May 2022.
Develop hygiene plan and install washdown points at heavy duty gates	By December 2019	Completed DBCA developed Hygiene Plan for all of Bush Forever 300 in May 2018. Washdown points installed by DBCA in December 2018
Flora and vegetation survey	By December 2019	Completed Report completed February 2019

Nirimba / Carrabungup – all of the below are referenced by evidence documents R24_10 and R24_11 (DBCA)

The status of the following is “Completed” and as such based on commitment of management activities during 2017-2023 (Table 5.3 of the *Land Acquisition and Rehabilitation Offsets Strategy (2018)*) MRWA will be seeking closure of these requirements in 2025.

Removal of internal fences	By December 2019	Completed -
Upgrading of boundary fence (not cable fencing)	By December 2019	Completed
Installation of new firebreaks	By December 2019	Completed – maintenance of firebreaks are ongoing and undertaken annually.

Compliance Assessment Report

NorthLink WA Perth-Darwin National Highway (Swan Valley Section)



Maintenance of existing firebreaks	2017 – 2023	Conforming Maintenance of firebreaks is ongoing, most recent maintenance undertaken in November 2024.
Weed control (Watsonia, Arum Lily and Tagasaste)	2021 – 2023	Conforming Ongoing, with weed control across revegetation site completed
<i>Phytophthora cinnamomi</i> mapping	Completed July 2017	Completed July 2017
Feral pig control	2017 – 2023	Conforming Ongoing pig control works undertaken throughout the reporting period, including the following management measures: <ul style="list-style-type: none"> • Monitoring for pigs using remote cameras • On-ground surveys for signs of pig activity undertaken. • Pre-feeding station and monitoring prior to trapping • Control through shooting.
Lot 252 Birchmont		
Provision of new fences (1.8 km of cable fencing and 4 heavy duty gates installed)	December 2019	Complete Installation of 1.2 km cable fence completed along northern boundary December 2022
Upgrade existing firebreaks	By December 2020	Complete
Firebreak maintenance	Annually until 2025	Conforming Ongoing as per required maintenance for fire suppression.
Feral pig control	Annually 2019 – 2025	Conforming No pig activity was detected this reporting period due to previous integrated program (R24_03). Funds for this activity have been redirected into the weed control program.
Install signage	By December 2020	Complete
Weed mapping	2019, 2021 and 2025	Conforming Final weed mapping to be completed 2025.
Weed control	Annually from 2020 to 2025	Conforming Ongoing, with most recent weed control program implemented (R24_03)
<i>Phytophthora cinnamomi</i> mapping and management plan	Baseline mapping and management plan by December 2019 Follow up mapping in 2022	Conforming Baseline mapping completed Linear dieback re-survey was completed in 2023.
ASS investigation and feasibility study	By December 2019	Complete

Compliance Assessment Report

NorthLink WA Perth-Darwin National Highway (Swan Valley Section)



ASS management	Up until 2025	<p>Conforming</p> <p>Cultural heritage survey for works to mitigate saltwater intrusion into wetland was undertaken in September 2023.</p> <p>A weir structure was constructed to manually control the Mealup Main Drains freshwater outflow. This structure will also restrict saltwater intrusion back up the main drain on very high tides from the Harvey Estuary. Heritage and other approvals were obtained and the weir constructed late summer 2024 with effective results.</p>
Rubbish removal	By December 2019	Complete

Lake Clifton - all of the below are referenced by evidence documents R24_10 and R24_11 (DBCA)

The status of the following is "Completed" and as such based on commitment of management activities during 2017-2023 (Table 7.3 of the *Land Acquisition and Rehabilitation Offsets Strategy (2018)* MRWA will be seeking closure of these requirements in 2025.

Removal of internal fences	December 2018	Complete
Provision of new fences	December 2019	Complete
Weed monitoring and control	Annually from 2017 to 2023	<p>Completed</p> <p>Ongoing, with most recent control of declared weeds (predominantly Arum Lily) Cotton bush control.</p>
Firebreak installation	By December 2018	Complete
Firebreak maintenance	Annually from 2017 to 2023	<p>Completed</p> <p>Ongoing, with most recent maintenance of firebreaks undertaken in November 2024.</p>
Feral pig monitoring	Annually from 2017 to 2023	<p>Completed</p> <p>Ongoing, with pig eradication undertaken throughout the year through a contract shooter.</p>
Cat baiting program	Annually from 2018 – 2024	<p>Completed</p> <p>Camera monitoring still underway and approvals now gained for implementation of baiting to compliment 1080 fox control program. Additional cameras purchased and now 20 cameras on site. Cat control also undertaken utilising a contract shooter.</p>

Compliance Assessment Report

NorthLink WA Perth-Darwin National Highway (Swan Valley Section)



Caladenia huegelii Habitat Management Plan, MS 1036 and MS 1116, Conditions 16-12 to 16-18

Environmental objective: To maintain or improve the conservation status of *Caladenia huegelii*

Nature Reserves 46875 and 46919 and Bush Forever Site 300 - all of the below are referenced by evidence document R24_12 which is the *Caladenia huegelii* management plan actions.

Provision of cable fencing and heavy-duty gates	By December 2018	Complete.
Weed mapping and develop weed control program	By December 2017	Complete Baseline weed mapping and weed control program completed in 2017.
Weed control program implementation	2018 to 2020	Complete Weed control undertaken for 4 years (2018-2021).
<i>Phytophthora cinnamomi</i> mapping	Baseline mapping December 2017. Follow up mapping in 2019 and 2021.	Complete Initial mapping completed December 2017, with follow up mapping completed 2019. Final dieback mapping completed by DBCA in April and May 2022.
Development of a hygiene plan	By December 2017	Complete
<i>Caladenia huegelii</i> surveys and critical habitat mapping	Baseline surveys and mapping October 2017 and then annually in October until 2020.	Complete Surveys completed 2018-2020. DBCA provided final survey report in March 2021.
Install washdown points at heavy duty gates in accordance with the hygiene plan.	By December 2018	Complete
Kooljerrenup (Nature Reserve 23756) - all of the below are referenced by evidence document R24_12 which is the <i>Caladenia huegelii</i> management plan actions.		
Provision of cable fencing and heavy-duty gates	By December 2019	Complete
Weed mapping and develop weed control program	By December 2018	Complete Weed mapping and management plan report finalised December 2018
Weed control program implementation	2019 to 2021	Complete Weed control implemented 2019, with post-control photo monitoring subsequently completed. DBCA conducted revegetation in previously weed-infested areas to control weeds June – August 2021. DBCA prepared a final weed mapping report in 2021.
<i>Phytophthora cinnamomi</i> mapping	Baseline mapping December 2018. Follow up mapping in 2020 and 2022.	Complete Baseline dieback mapping completed in July 2018, with follow up mapping completed in July 2021 and June 2022.

Compliance Assessment Report

NorthLink WA Perth-Darwin National Highway (Swan Valley Section)



Development of a hygiene plan	By December 2017	Complete
<i>Caladenia huegelii</i> surveys and critical habitat mapping	Baseline surveys and mapping October 2017 and then annually in October until 2020.	Complete Surveys completed 2017-2020. DBCA provided final survey report in March 2021.
Feral pig control - camera installation	By December 2017	Complete
Feral pig control - develop pig control plan	By July 2018	Complete
Feral pig control – implement pig control plan and undertake ongoing surveillance with camera traps.	July 2018 to June 2021	Complete Surveillance completed from July 2018 to June 2021. Feral pig control completed December 2021.
SCP20a Offsets Strategy MS 1116 Conditions 16-19 to 16-22 Environmental objective: Counterbalance the significant residual impact to 4 ha of TEC SCP 20a, ' <i>Banksia attenuata</i> woodlands over species rich dense shrublands' as a result of the implementation of the proposal.		
Errina Road Bushland		
Flora and vegetation survey	By December 2018	Complete
Weed mapping	Baseline – December 2020 Monitoring – by December 2023 and December 2026	Complete (baseline) The implementation of a weed control program is ongoing (R24_03)
Weed control	Annually from 2020 to 2026	Conforming Ongoing, with most recent weed control implemented. (R24_03)
<i>Phytophthora</i> mapping	By December 2021	Completed
<i>Phytophthora</i> management plan	By December 2021	The reserve was assessed as being completely dieback free. On this basis DBCA determined a <i>Phytophthora</i> management plan is not operationally required for reserve management, as DBCA standard operating procedure is to be clean on entry.
Interpretive signage	By December 2020	Complete Installed in June 2020
Limestone paths	By December 2020	Complete
Replacement of fencing	By December 2021	Complete
Revegetation planting within degraded areas	By December 2022	Revegetation via tree planting and seeding of closed tracks has occurred to date.
Rubbish removal	Annually from 2020 to 2026	Complete Rubbish removed from offset site throughout 2024 (E24_03).

Compliance Assessment Report

NorthLink WA Perth-Darwin National Highway (Swan Valley Section)



Orange Grove / White Road

Flora and vegetation survey	By December 2018 By December 2021	Completed 2018 Flora and vegetation survey complete. 2021 Flora and vegetation survey was undertaken Spring 2022, report finalized in July 2023 (R23-19)
Weed mapping	By December 2021	Completed Updated weed mapping was undertaken in Spring 2022 with report finalised in November 2022 (R23-20)
Weed control	Annually from 2020 to 2026	Conforming DBCA completed ongoing weed control throughout 2024 for a range of woody weeds (including Victorian tea tree, eastern state wattles, tagasaste) where stump treatment and chipping was undertaken. Other weeds (including veldt grass, love grass, watsonia, Geraldton wax) was targeted with weed spraying. (E24_02)
<i>Phytophthora</i> mapping and treatment	By December 2020, December 2022, December 2024 and December 2026	Conforming Ongoing, with latest survey and treatment completed December 2022. No new infestations were identified during this 2022 assessment.
Interpretive signage	By December 2020 (8 nature reserve signs) By December 2021 (8 dieback signs) By December 2025 (reserve information board)	Complete Complete (E21-009) Not yet required
Shelter installation	By December 2025	Not yet required
Installation of fencing	By December 2021	Delayed due to woody weeds which is currently being addressed. Scheduled for 2024 (R24_02)
Demolition of existing house	Before December 2023	Complete Removal of house within Lot 29 and clean-up of immediate surroundings occurred in late 2019.
Revegetation planting within degraded areas	By December 2022 and ongoing until December 2026	Revegetation preparation works have commenced and are ongoing, primarily associated with weed control. DBCA have advised weed control is ongoing. Rehabilitation of sandpit and house areas was not completed this financial year (R24_02)
Rubbish removal	Annually from 2020 to 2026	Conforming Ongoing, with removal of rubbish undertaken (R22_02).
Reserve environmental management plan	By December 2022	Conforming Currently under preparation and on track for completion in 2024 (R24_02).

Compliance Assessment Report

NorthLink WA Perth-Darwin National Highway (Swan Valley Section)



Feral bee control	Annually from 2020 to 2026	Conforming Survey and treatment of feral bees was undertaken in the reserve (R24_02)
Hawkesvale Nature Reserve		
Flora and vegetation survey	By December 2018	Completed
Weed mapping	Baseline by December 2020 Monitoring by December 2023 and December 2026	Completed (baseline) in June 2020 The weed control program was implemented for the offset site in May-September 2023, including an area that was burnt in 2020.
Weed control	Annually from 2020 to 2026	Conforming Ongoing, with most recent weed control implemented May-Sept 2022, including an area burnt in 2020 (R24_03)
Phytophthora mapping	By December 2021	Completed DPaW completed the <i>Phytophthora cinnamomi</i> occurrence map in December 2020 (D21-002) and compiled a dieback report which identified the area as wholly uninfested.
<i>Phytophthora</i> management plan	By December 2021	The reserve was assessed as being completely dieback free. On this basis DBCA determined a <i>Phytophthora</i> management plan is not operationally required for reserve management, as DBCA standard operating procedure is to be clean on entry.
Interpretive signage	By December 2020	Complete Installed in June 2020
Revegetation planting within degraded areas	By December 2021	Conforming Approximately half of the reserve was impacted by a bushfire in early 2021. At least 0.25 ha of the fire scar area will be revegetated, consistent with the requirements of the Offset Strategy. To date, DBCA have revegetated the machine tracks (created to fight the bushfire) via direct seeding. In 2023 a Friends of Hawkvale Nature Reserve group have been active in the past year assisting DBCA staff with weeding and some tree planting works along degraded areas around the boundary fence. There was also a rubbish clean-up day held. (R24_03)

Compliance Assessment Report

NorthLink WA Perth-Darwin National Highway (Swan Valley Section)



5 Supporting/Verifying Information

A range of supporting/verifying information was utilised to prepare this CAR, including:

- Correspondence provided by Main Roads.
- Monitoring reports, letters or memorandums provided by Main Roads.
- Environmental assessment reports provided by Emerge Associates.
- Personal communication with the Main Roads Principal Environmental Officer, Tony Carlino.

Key pieces of verifiable information for the assessment of implementation of MS 1036 and MS 1116 conditions are referenced in **Appendix C** and provided separately in electronic format. It should be noted that further supporting evidence, should it be required, can be provided upon request.

Compliance Assessment Report

NorthLink WA Perth-Darwin National Highway (Swan Valley Section)



6 Other Information

The proponent does not have any other information to provide in this CAR.

Compliance Assessment Report

NorthLink WA Perth-Darwin National Highway (Swan Valley Section)



7 References

7.1 General references

Coffey Services Australia Pty Ltd (Coffey) 2017, Ippolo Road Site Land Acquisition and Management Plan Perth–Darwin National Highway (Swan Valley Section), Perth, Western Australia

Coffey Services Australia Pty Ltd (Coffey) 2018a, Condition Environmental Management Plan Amenity (Noise) Perth–Darwin National Highway (Swan Valley Section) Coffey Services Australia Pty Ltd, Perth, Western Australia

Coffey Services Australia Pty Ltd (Coffey) 2018b, Condition Environmental Management Plan Flora and Vegetation – Progressive Rehabilitation Perth–Darwin National Highway (Swan Valley Section), Perth, Western Australia.

Coffey Services Australia Pty Ltd (Coffey) 2018c, Land Acquisition and Rehabilitation Offsets Strategy Perth–Darwin National Highway (Swan Valley Section) Perth, Western Australia.

Coffey Services Australia Pty Ltd (Coffey) 2019a, Caladenia huegelii Habitat Management Plan Perth–Darwin National Highway (Swan Valley Section) Perth, Western Australia

Coffey Services Australia Pty Ltd (Coffey) 2019b, Condition Environmental Management Plan Fauna – Construction Perth–Darwin National Highway (Swan Valley Section) Perth, Western Australia

Coffey Services Australia Pty Ltd (Coffey) 2019c, Condition Environmental Management Plan Flora and Vegetation – Construction Perth–Darwin National Highway (Swan Valley Section), Perth, Western Australia

Coffey Services Australia Pty Ltd (Coffey) 2019d, Condition Environmental Management Plan Inland Waters Environmental Quality – Hydrological Processes Perth–Darwin National Highway (Swan Valley Section) Perth, Western Australia

Coffey Services Australia Pty Ltd (Coffey) 2019e, SCP20a Offsets Strategy Perth–Darwin National Highway (Swan Valley Section), Perth, Western Australia

Coffey Services Australia Pty Ltd (Coffey) 2020a, Condition Environmental Management Plan Flora and Vegetation – Inland Waters Perth–Darwin National Highway (Swan Valley Section), Perth, Western Australia

Coffey Services Australia Pty Ltd (Coffey) 2020b, Condition Environmental Management Plan Indirect Impacts and Threatened Flora and Communities Perth–Darwin National Highway (Swan Valley Section), Perth, Western Australia

Eco Logical Australia (ELA) 2018, Compliance Assessment Plan Perth-Darwin National Highway (Swan Valley Section), Perth

Office of the Environmental Protection Authority (OEPA) 2012a, Post Assessment Guideline for Preparing a Compliance Assessment Report.

Office of the Environmental Protection Authority (OEPA) 2012b, Post Assessment Guidelines for Preparing an Audit Table.

Compliance Assessment Report

NorthLink WA Perth-Darwin National Highway (Swan Valley Section)



7.2 Online references

Main Roads Western Australia (MRWA) 2023, *NorthLink WA*, [Compliance Assessment Report](#)

This page has been left blank intentionally.

Appendix A

Compliance Status of Key Characteristics



Compliance Assessment Report

NorthLink WA Perth-Darwin National Highway (Swan Valley Section)



Table A1: Compliance Status of Key Characteristics of Proposal

Element	Description of Proposal	Status	Further Information
Clearing and disturbance for road corridor, drainage structures including infiltration and bioretention basins and swales, laydowns, bridges and culverts, fauna fencing, fauna underpasses, noise walls, road train assembly area and principal shared path.	<p>Clearing and disturbance of no more 765.07 ha consisting of up to 206 ha of native vegetation. This includes up to:</p> <ul style="list-style-type: none"> • 129.9 ha of Bush Forever areas • 0.4 ha of Class A Nature Reserve 46920 • 0.2 ha of Class A Nature Reserve 46919 • 32.6 ha of Gngangara-Moore River State Forest No. 65 • 4 ha of Floristic Community Type SCP 20a Threatened Ecological Community • 31.9 ha of <i>Caladenia huegelii</i> critical habitat • 2 ha of <i>Grevillea curviloba</i> subsp. <i>incurva</i> critical habitat • 16 ha of Conservation Category Wetlands <p>Within a 1,004.07 ha development envelope.</p>	CLD	<p>Construction phase of the project is complete.</p> <p>Total clearing and disturbance, as reported by the Northlink Infrastructure Report (R21-006) is:</p> <ul style="list-style-type: none"> • 92.5 ha of Bush Forever areas • 0.07 ha of Class A Nature Reserve 46920 • 0.2 ha of Class A Nature Reserve 46919 • 27.6 ha of Gngangara-Moore River State Forest No. 65 • 3.9 ha of Floristic Community Type SCP 20a Threatened Ecological Community • 29.8 ha of <i>Caladenia huegelii</i> critical habitat • 1.6 ha of <i>Grevillea curviloba</i> subsp. <i>incurva</i> critical habitat • 13.3 ha of Conservation Category Wetlands <p>Within a 1,004.07 ha development envelope.</p>
Noise walls	Height of noise walls to be no more than 5 m on residential boundaries between Reid Highway and south of Maralla Road.	CLD	<p>Construction phase of the project is complete.</p> <p>Two noise walls have been installed within the development envelope to a height of 5.5 m (NW-16 (CHA 544-676) and NW-19 (CHA 262-406)) (R21-006). However, the listed noise walls are offset from the property boundaries and are adjacent to the road alignment. The properties are elevated above the road, so the top of the noise walls will be less than 5 m, as reported in the 2019 CAR.</p>

OFFICIAL

Appendix B

Ministerial Statements 1036 and 1116 Audit Table



Compliance Assessment Report

NorthLink WA Perth-Darwin National Highway (Swan Valley Section)



The code prefixes within **Table B1** have been applied to this audit.

Table B2 provides a summary of the requirements applying to this assessment report. Refer to Ministerial Statements 1036 and 1116 issued for the proposal under Part IV of the *Environmental Protection Act 1986* for further details of audit elements.

Table B1: Audit prefixes and abbreviations

Code prefixes	
Minister's Condition	M
Proponent's Commitment	P
Procedure	N
Abbreviations	
Compliance Assessment Report	CAR
Chief Executive Officer of the OEPA	CEO
Minister for the Environment	Minister for Env.
Ministerial Statement	MS
Office of the Environmental Protection Authority	OEPA
Status abbreviations (refer to Table 1 in Section 3.8)	
Completed	CLD
Compliant	C
Not required at this stage	NR
In progress	IP
Potentially Non-Compliant	PNC
Non-compliant	NC

Compliance Assessment Report

NorthLink WA Perth-Darwin National Highway (Swan Valley Section)



Table B2: Ministerial Statement 1036 and 1116 Audit Details

Condition	Requirement	How	Evidence	Phase	Timeframe	Status	Further Information
Proposal Implementation							
MS 1036: M1-1	When implementing the proposal, the proponent shall not exceed the authorised extent of the proposal as defined in Table 2 in Schedule 1, unless amendments to the proposal and the authorised extent of the proposal have been approved under the EP Act.	Implement project pursuant to Table 2 in Schedule 1 of MS 1036.	CAR.	Overall	Annually	CLD	s45C change to proposal, and clearing limits, approved 7 June 2017. Compliance details provided in Table A1 (within Appendix A).
Contact Details							
MS 1036: M2-1	The proponent shall notify the CEO of any change of its name, physical address or postal address for the serving of notices or other correspondence within twenty-eight (28) days of such change. Where the proponent is a corporation or an association of persons, whether incorporated or not, the postal address is that of the principal place of business or of the principal office in the State.	Notify the CEO in writing of any change to proponent details.	Copy of written notification to CEO of any change in proponent details.	Overall	Within twenty-eight (28) days of such change.	NR	Review of requested information from the proponent indicated no changes have occurred during the reporting period.
Time Limit for Proposal Implementation							
MS 1036: M3-1	The proponent shall not commence implementation of the proposal after five (5) years from the date on this Statement, and any commencement, prior to this date, must be substantial.	Provide evidence to the CEO in writing to demonstrate the proposal has substantially commenced.	CAR.	Construction	Implement proposal within five (5) years from date on MS 1036.	CLD	Ground disturbance associated with the proposal commenced on 31 March 2017, prior to 20 September 2021. Reported in the 2017 CAR (Coffey 2017)

MS

Compliance Assessment Report

NorthLink WA Perth-Darwin National Highway (Swan Valley Section)



Condition	Requirement	How	Evidence	Phase	Timeframe	Status	Further Information
MS 1036: M3-2	Any commencement of implementation of the proposal, on or before five (5) years from the date of this Statement, must be demonstrated as substantial by providing the CEO with written evidence, on or before the expiration of five (5) years from the date of this Statement.	Provide evidence to the CEO in writing to demonstrate the proposal has substantially commenced.	Copy of written notification to CEO of substantial commencement	Construction	Implement proposal within five (5) years from date on MS 1036.	CLD	Ground disturbance commenced on 31 March 2017, as reported in the 2017 CAR (Coffey 2017)
Compliance Reporting							
MS 1036: M4-1	The proponent shall prepare, submit and maintain a Compliance Assessment Plan to the CEO at least six (6) months prior to the first Compliance Assessment Report required by condition 4-6, or prior to implementation, whichever is sooner.	Submit a Compliance Assessment Plan (CAP).	CAP.	Pre-construction	At least six (6) months prior to the first CAR required by condition 4-6, or prior to implementation, whichever is sooner.	CLD	The CAP was submitted in October 2016. The first CAR was submitted in December 2017 (Coffey 2017)
MS 1036: M4-2	The Compliance Assessment Plan shall indicate: <ul style="list-style-type: none"> • The frequency of compliance reporting. • The approach and timing of compliance assessments. • The retention of compliance assessments. • The method of reporting of potential non-compliances and corrective actions taken. • The table of contents of Compliance Assessment Reports. • Public availability of Compliance Assessment Reports. 	Submit CAP.	CAP.	Pre-construction	At least six (6) months prior to the first CAR required by condition 4-6, or prior to implementation, whichever is sooner.	CLD	CAP (Revision [Rev] 1) was approved by OEPA, as reported in the 2017 CAR (Coffey 2017) The CAP (Rev 2) was revised and approved by DWER on 7 February 2019

MS

Compliance Assessment Report

NorthLink WA Perth-Darwin National Highway (Swan Valley Section)



Condition	Requirement	How	Evidence	Phase	Timeframe	Status	Further Information
MS 1036: M4-3	After receiving notice in writing from the CEO that the Compliance Assessment Plan satisfies the requirements of condition 4-2 the proponent shall assess compliance with conditions in accordance with the Compliance Assessment Plan required by condition 4-1.	Once approval is received from the CEO, commence compliance assessment in accordance with the CAP.	CEO letter approving the CAP. CAR.	Overall	After written approval from the CEO.	C	This CAR (2024) is the eighth CAR to be produced. All eight CARs have been developed in accordance with the CAP.
MS 1036: M4-4	The proponent shall retain reports of all compliance assessments described in the Compliance Assessment Plan required by condition 4-1 and shall make those reports available when requested by the CEO.	Retain CAR's and make available when requested.	CAR.	Overall	As requested by the CEO.	C	This CAR (2024) is the eighth CAR to be produced. The previous reports are kept as records on the MRWA website: https://www.mainroads.wa.gov.au/community-environment/environment/construction-project-reports/
MS 1036: M4-5	The proponent shall advise the CEO of any potential non-compliance within seven (7) days of that non-compliance being known.	Notify the CEO of potential non-compliances in writing and/or verbally.	Written notification. CAR.	Overall	Within seven (7) days of that non-compliance being known.	C	No non-compliances were noted within the reporting period.

Compliance Assessment Report

NorthLink WA Perth-Darwin National Highway (Swan Valley Section)



Condition	Requirement	How	Evidence	Phase	Timeframe	Status	Further Information
MS 1036: M4-6	<p>The proponent shall submit to the CEO the first Compliance Assessment Report fifteen (15) months from the date of issue of this Statement addressing the twelve (12) month period from the date of issue of this Statement and then annually from the date of submission of the first Compliance Assessment Report, or as otherwise agreed in writing by the CEO.</p> <p>The Compliance Assessment Report shall:</p> <ul style="list-style-type: none"> • Be endorsed by the proponent's Chief Executive Officer or a person delegated to sign on the Chief Executive Officer's behalf. • Include a statement as to whether the proponent has complied with the conditions. • Identify all potential non-compliances and describe corrective and preventative actions taken. • Be made publicly available in accordance with the approved Compliance Assessment Plan. • Indicate any proposed changes to the Compliance Assessment Plan required by condition 4-1. 	Submit a CAR within required timeframe reporting on the previous 12 months.	CAR.	Overall	<p>Initial CAR within 15 months from date of MS 1036.</p> <p>Annually from date of submission of first CAR or a date as agreed by CEO.</p>	C	<p>This CAR is the eighth CAR and addresses the requirements of the condition, where required. This CAR will be made publicly available on the Main Roads website, as has occurred for other documents, including the previous CARs.</p>

Compliance Assessment Report

NorthLink WA Perth-Darwin National Highway (Swan Valley Section)



Condition	Requirement	How	Evidence	Phase	Timeframe	Status	Further Information
Public Availability of Plans and Reports							
MS 1036: M5-1	Subject to condition 5-2, within a reasonable time period approved by the CEO of the issue of this Statement and for the remainder of the life of the proposal the proponent shall make publicly available, in a manner approved by the CEO, all environmental plans and reports required under this Statement.	All environmental plans and reports required by MS 1036 are made publicly available.	CAR.	Overall	For the life of the proposal as approved by the CEO.	C	OEPA approved public availability of documents being via Main Roads website, as reported in the 2017 CAR (Coffey 2017). Website available at: https://www.mainroads.wa.gov.au/community-environment/environment/construction-project-reports/ Approved documents are available on the website.
MS 1036: M5-2	If any parts of the plans or reports, referred to in Condition 5-1 contains particulars of: <ul style="list-style-type: none"> • A secret formula or process. • Confidential commercially sensitive information. • The location of threatened species or other important environmental assets that may be potentially harmed if their location was published. The proponent may submit a request for approval from the CEO to not make these data publicly available. In making such a request the proponent shall provide the CEO with an explanation and reasons why those parts of the plans or reports should not be made publicly available.	Submit a request for approval from the CEO to not make sensitive information publicly available.	Copy of written request to CEO. CEO approval.	Overall	As required.	NR	No request has been made

Compliance Assessment Report

NorthLink WA Perth-Darwin National Highway (Swan Valley Section)



Condition	Requirement	How	Evidence	Phase	Timeframe	Status	Further Information
Infrastructure Plan							
MS 1036: M6-1	<p>The proponent shall demonstrate that the proposal is designed and constructed consistent with the authorised extent(s) as referred to in Table 2 in Schedule 1 in order to meet the following environmental objectives:</p> <ul style="list-style-type: none"> • Minimise direct and indirect impacts to conservation significant terrestrial fauna. • Minimise impacts to hydrological regimes of surface water. • Minimise impacts to the quality of groundwater and surface water. • Minimise impacts to amenity as low as reasonably practicable. <p>Through the implementation of conditions 6-2 to 6-5.</p>	Prepare and implement the Infrastructure Plan.	Pre-construction Infrastructure Plan. Post-construction Infrastructure Report.	Overall	Prior to the commencement of ground disturbing activities (pre-construction Infrastructure Plan). Six (6) months following completion of construction (post-construction Infrastructure Report), or as agreed by the CEO.	CLD	<p>OEPA approved the design documented in the Infrastructure Plan, as reported in the 2017 CAR (Coffey 2017)</p> <p>The post-construction infrastructure report was submitted in August 2020 during the previous reporting period.</p>
MS 1036: M6-2	<p>The proponent shall prepare and submit a pre-construction Infrastructure Plan which is to be approved by the CEO prior to the commencement of ground disturbing activities. The pre-construction Infrastructure Plan shall include:</p> <ul style="list-style-type: none"> • The alignment, dimensions and locations of the key proposal elements as referred to in Columns 1 and 2 of Table 2 in Schedule 1. • The dimensions and locations of fauna underpasses and fauna fencing as referred to in Columns 1 and 2 of Table 2 in Schedule 1. <p>Fauna underpass dimensions and</p>	Prepare an Infrastructure Plan pursuant to M6.2.	Infrastructure Plan. CEO approval.	Pre-Construction	Prior to the commencement of ground disturbing activities.	CLD	Infrastructure Plan was approved 15 March 2017. Ground disturbing activities commenced on 31 March 2017, as reported in the 2017 CAR (Coffey 2017)

MS

Compliance Assessment Report

NorthLink WA Perth-Darwin National Highway (Swan Valley Section)



Condition	Requirement	How	Evidence	Phase	Timeframe	Status	Further Information
	<p>locations should be consistent with the approved Fauna – Construction Condition Environmental Management Plan as required by condition 12.</p> <ul style="list-style-type: none"> • The design and locations of culverts and bridges as referred to in Columns 1 and 2 of Table 2 in Schedule 1. • The design and location of bioretention swales and infiltration basins in the vicinity of Ellen Brook and within the GUWPCA, consistent with the approved Inland Waters Environmental Quality – Hydrological Processes Condition Environmental Management Plan as required by condition 13. • The dimensions and locations of noise walls as referred to in Columns 1 and 2 of Table 2 in Schedule 1, consistent with the approved Amenity (Noise) Condition Environmental Management Plan. • Spatial data for the proposal elements as detailed in 6-2(1), 6-2(2), 6-2(3), 6-2(4) and 6-2(5). 						
MS 1036: M6-3	The proponent may review and revise the pre-construction Infrastructure Plan required by condition 6-2 or shall review and revise the pre-construction Infrastructure Plan required as and when directed by the CEO.	Revise/review the Infrastructure Plan as and when required by the CEO.	Revised Infrastructure Plan. CEO approval.	Pre-construction Construction	As notified by MRWA or as and when required by the CEO.	CLD	<p>The pre-construction Infrastructure report was last updated in February 2017.</p> <p>Construction phase of the project is complete, so no further revision of the pre-construction Infrastructure Plan will be necessary.</p>

MS

Compliance Assessment Report

NorthLink WA Perth-Darwin National Highway (Swan Valley Section)



Condition	Requirement	How	Evidence	Phase	Timeframe	Status	Further Information
MS 1036: M6-4	The revised pre-construction Infrastructure Plan shall be the Infrastructure Plan used for implementing construction, following receipt in writing from the CEO that the revised pre-construction Infrastructure Plan satisfies the requirements set out in condition 6-2.	Implement the revised pre-construction Infrastructure Plan.	CAR.	Pre-construction Construction	Following receipt in writing from the CEO that the revised pre-construction Infrastructure Plan satisfies the requirements set out in condition 6-2.	CLD	The pre-construction Infrastructure report was last updated in February 2017, as reported in 2017 CAR (Coffey 2017)
MS 1036: M6-5	<p>The proponent shall prepare and submit a post-construction Infrastructure Report to confirm that the key elements of the proposal as referred to in Columns 1 and 2 of Table 2 in Schedule 1 were constructed in accordance with the requirements of condition 6-2, within six (6) months following the completion of construction, or as otherwise agreed in writing by the CEO.</p> <p>The post-construction Infrastructure Report shall include:</p> <ul style="list-style-type: none"> • The alignment, dimensions and locations of the key proposal elements as referred to in Columns 1 and 2 of Table 2 in Schedule 1. • The dimensions and locations of fauna underpasses and fauna fencing as referred to in Columns 1 and 2 of Table 2 in Schedule 1. <p>Fauna underpass dimensions and locations should be consistent with the approved Fauna – Construction Condition Environmental</p>	Submit a post-Construction Infrastructure Report.	Post-construction Infrastructure Report (R21-006).	Operation	Within six (6) months following the completion of construction, or as otherwise agreed in writing by the CEO.	CLD	<p>BG&E on behalf of Main Roads, prepared the post construction Infrastructure Report in August 2020 which was submitted to DWER during a previous reporting period within 6 months of completion of construction (21 April 2020).</p> <p>The post construction Infrastructure Report includes the information as listed in M6-5(1) – (6)</p>

MS

Compliance Assessment Report

NorthLink WA Perth-Darwin National Highway (Swan Valley Section)



Condition	Requirement	How	Evidence	Phase	Timeframe	Status	Further Information
	<p>Management Plan as required by condition 12.</p> <ul style="list-style-type: none"> The design and locations of culverts and bridges as referred to in Columns 1 and 2 of Table 2 in Schedule 1. The design and location of bioretention swales and infiltration basins in the vicinity of Ellen Brook and within the GUWPCA, consistent with the approved Inland Waters Environmental Quality – Hydrological Processes Condition Environmental Management Plan as required by condition 13. The dimensions and locations of noise walls as referred to in Columns 1 and 2 of Table 2 in Schedule 1, consistent with the approved Amenity (Noise) Condition Environmental Management Plan. Spatial data for the proposal elements as detailed in 6-5(1), 6-5(2), 6-5(3), 6-5(4) and 6-5(5). 						
Condition Environmental Management Plan (management based)							
MS 1036: M7-1	<p>Prior to the commencement of ground disturbing activities, or as otherwise agreed in writing by the CEO, the proponent shall prepare and submit Condition Environmental Management Plans to the satisfaction of the CEO to demonstrate that the environmental objectives in conditions 9-1, 10-1, 11-1, 12-1 and 15-1 will be met.</p>	<p>Prepare and submit Condition Environmental Management Plans required by M9.1, M10.1, M11.1, M12.1 and M15.1.</p>	<p>Condition Environmental Management Plans required by M9.1, M10.1, M11.1, M12.1 and M15.1.</p>	Pre-construction	<p>Prior to the commencement of ground disturbing activities, or as otherwise agreed in writing by the CEO.</p>	CLD	<p>Ground disturbing activities commenced on 31 March 2017.</p> <p>The Plans were approved as reported in the 2017 CAR (Coffey 2017).</p>

MS

Compliance Assessment Report

NorthLink WA Perth-Darwin National Highway (Swan Valley Section)



Condition	Requirement	How	Evidence	Phase	Timeframe	Status	Further Information
MS 1036: M7-2	<p>The Condition Environmental Management Plans shall:</p> <ul style="list-style-type: none"> • Prioritise risk-based management actions that will be implemented to meet the environmental management objectives in conditions 9-1, 10-1, 11-1, 12-1 and 15-1. • Specify measurable management targets for determining the efficacy of the risk-based management actions. • Specify monitoring to be conducted to measure the efficacy of management actions against management targets. • Specify, in the event that the management targets are not achieved a procedure for revision of management actions and changes to proposal activities. The procedure shall include an investigation to determine the cause of the management targets being exceeded. • Provide the format and timing for annual reporting required by condition 4-6 for: <ul style="list-style-type: none"> ○ Verification of the implementation of management actions to demonstrate that conditions 9-1, 10-1, 11-1, 12-1 and 15-1 have been met for the reporting period. 	Prepare and submit Condition Environmental Management Plans required by M9.1, M10.1, M11.1, M12.1 and M15.1.	Condition Environmental Management Plans required by M9.1, M10.1, M11.1, M12.1 and M15.1.	Pre-construction	Prior to the commencement of ground disturbing activities, or as otherwise agreed in writing by the CEO.	CLD	OEPA approved all Plans, as reported in the 2017 CAR (Coffey 2017).

Compliance Assessment Report

NorthLink WA Perth-Darwin National Highway (Swan Valley Section)



Condition	Requirement	How	Evidence	Phase	Timeframe	Status	Further Information
	<ul style="list-style-type: none"> Reporting on the efficacy of management actions against management targets. Provide for reporting when management actions are not implemented. 						
MS 1036: M7-3	<p>After receiving notice in writing from the CEO that a Condition Environmental Management Plans satisfies the requirements of condition 7-2 for conditions 9-1, 10-1, 11-1, 12-1 and 15-1, the proponent shall prior to the commencement of ground disturbing activities:</p> <ul style="list-style-type: none"> Implement the provisions of the approved Condition Environmental Management Plans. Continue to implement the approved Condition Environmental Management Plans until the CEO has confirmed by notice in writing that the proponent has met the relevant objectives specified in the approved Condition Environmental Management Plan and no longer needs to implement that particular CEMP. 	Implement the Condition Environmental Management Plans.	CAR.	Overall	Prior to the commencement of ground disturbing activities and then until the CEO has confirmed by notice in writing that the proponent has demonstrated the objectives specified in conditions 9-1, 10-1, 11-1, 12-1 and 15-1 have been met.	C	<p>The Condition EMPs required by Conditions 9-1, 10-1, 11-1, 12-1 and 15-1 were implemented prior to the commencement of ground disturbing activities and these plans continue to be implemented.</p> <p>MRWA have advised the CEO that the requirement of these conditions have been met. Confirmation has been received regarding conditions 9, and 12 that these have been completed.</p>
MS 1036: M7-4	In the event that monitoring, tests, surveys or investigations indicate that management actions specified in a Condition Environmental Management Plan are not implemented or that management targets specified in a Condition	Report exceedances or failure to implement management actions within 7 days of identification.	Exceedance /Failure to Implement Report (condition 7-4(1)) and Investigation Report	Overall	Initial exceedance/failure to implement report required by condition 7-4(1) within 7 days of identification. Submit the investigation report	C	Non-conformances and potential non-conformances with exceedance levels were reported within 7 days of being identified and an investigation report detailing Condition 7-4 (4) was provided to the CEO within 60 days of reporting the incident.

MS

Compliance Assessment Report

NorthLink WA Perth-Darwin National Highway (Swan Valley Section)



Condition	Requirement	How	Evidence	Phase	Timeframe	Status	Further Information
	<p>Environmental Management Plans are exceeded, the proponent shall:</p> <ul style="list-style-type: none"> • Report the exceedance or failure to implement management actions in writing within 7 days of identification. • Investigate to determine the cause of the management actions not being implemented and/or management targets being exceeded. • Investigate to provide information for the determination by the CEO of potential environmental harm or alteration of the environment that occurred due to the failure to implement management actions. • Provide a report to the CEO within 60 days of the reporting required by condition 7-4(1). The report shall include: <ul style="list-style-type: none"> ○ Cause for failure to implement management actions and/or management targets exceeded. ○ The findings of the investigation required by conditions 7-4(2) and 7-4(3). ○ Details of revised and/or additional management actions to be implemented to prevent exceedance of the management targets and/or ensure implementation of management actions. ○ Relevant changes to proposal activities. 	<p>Investigate cause of exceedance of failure to implement.</p> <p>Investigate potential environmental harm, alteration of the environment.</p> <p>Provide a report to the CEO within 60 days or the incident reported in condition 7-4(1).</p>	<p>(condition 7-4(4)).</p>		<p>required by condition 7-4(4) within 60 days of the initial report required by condition 7-4(1).</p>		<p>Report:</p> <p>L24_03</p> <p>Evidence of DWER notifications/response:</p> <p>L24_04</p> <p>Evidence of investigation reports:</p> <p>R24_04</p>

Compliance Assessment Report

NorthLink WA Perth-Darwin National Highway (Swan Valley Section)



Condition	Requirement	How	Evidence	Phase	Timeframe	Status	Further Information
	<ul style="list-style-type: none"> Measures to prevent, control or abate the environmental harm which may have occurred. 						
MS 1036: M7-5	The proponent may review and revise the Condition Environmental Management Plans, or as otherwise specified by the CEO.	Review the Condition Environmental Management Plans as specified by the CEO.	Revised Condition Environmental Management Plan	Overall	As required.	C	No Condition EMPs have been reviewed and revised within the current reporting period.
MS 1036: M7-6	The proponent shall implement the latest revision of the Condition Environmental Management Plan, which the CEO has confirmed by notice in writing, satisfies the requirements of condition 7-2.	Implement the revised Condition Environmental Management Plans.	CAR	Overall	Once revisions are approved in writing by the CEO.	C	The Proponent continues to implement the revised and/or approved plans.
Condition Environmental Management Plans (outcome based)							
MS 1036: M8-1	Prior to the commencement of ground disturbing activities, or as otherwise agreed in writing by the CEO, the proponent shall prepare and submit Condition Environmental Management Plan(s) to the satisfaction of the CEO to demonstrate that the environmental outcomes in conditions 13-1 and 14-1 will be met.	Prepare and Submit Condition Environmental Management Plans required by 13-1 and 14-1.	Condition Environmental Management Plans required by 13-1 and 14-1.	Pre-construction	Prior to the commencement of ground disturbing activities, or as otherwise agreed in writing by the CEO.	CLD	<p>Ground disturbing activities commenced on 31 March 2017.</p> <p>The Plans were approved on 15/03/2017, as reported in the 2017 CAR (Coffey 2017).</p>

Compliance Assessment Report

NorthLink WA Perth-Darwin National Highway (Swan Valley Section)



Condition	Requirement	How	Evidence	Phase	Timeframe	Status	Further Information
MS 1036: M8-2	<p>The Condition Environmental Management Plan(s) shall:</p> <ul style="list-style-type: none"> Specify trigger criteria that will trigger the implementation of trigger level actions if exceeded. Specify threshold criteria that: <ul style="list-style-type: none"> provides a limit beyond which the environmental outcomes identified in conditions 13-1 and 14-1 are not achieved. will trigger the implementation of threshold contingency actions if exceeded. Specify monitoring to determine if trigger criteria and threshold criteria are exceeded. Specify trigger level actions to be implemented in the event that trigger criteria have been exceeded. Specify threshold contingency actions to be implemented in the event that threshold criteria are exceeded. Provide the format and timing for the reporting of monitoring results against trigger criteria and threshold criteria to demonstrate that conditions 13-1 and 14-1 have been met over the reporting period in the Compliance Assessment Report required by condition 4. Provide for reporting of exceedances of the trigger and threshold criteria. 	Prepare and Submit Condition Environmental Management Plans required by 13-1 and 14-1.	Condition Environmental Management Plans required by 13-1 and 14-1.	Pre-construction	Prior to the commencement of ground disturbing activities, or as otherwise agreed in writing by the CEO.	CLD	OEPA approved all Plans, as reported in the 2017 CAR (Coffey 2017).

MS

Compliance Assessment Report

NorthLink WA Perth-Darwin National Highway (Swan Valley Section)



Condition	Requirement	How	Evidence	Phase	Timeframe	Status	Further Information
MS 1036: M8-3	<p>After receiving notice in writing from the CEO that the Condition Environmental Management Plan(s) satisfies the requirements of condition 8-2 for conditions 13-1 and 14-1, the proponent shall prior to the commencement of ground disturbing activities:</p> <ul style="list-style-type: none"> • Implement the provisions of the Condition Environmental Management Plans. • Continue to implement the Condition Environmental Management Plans until the CEO has confirmed by notice in writing that the proponent has met the relevant objectives specified in the approved Condition Environmental Management Plan and no longer needs to implement that particular Condition Environmental Management Plan. 	Implement the Condition Environmental Management Plans required by 13-1 and 14-1.	CAR	Overall	After CEO approval that the Condition Environmental Management Plan(s) satisfies the requirements of condition 8-2 for conditions 13-1 and 14-1 the proponent shall implement provisions of the EMP prior to the commencement of ground disturbing. Until the CEO has confirmed by notice in writing that the proponent has demonstrated the outcomes specified in conditions 13-1 and 14-1 have been met.	C	<p>The Condition EMPs required by Conditions 13-1 and 14-1 were implemented prior to the commencement of ground disturbing activities and these plans continue to be implemented.</p> <p>MRWA have advised the CEO that the requirement of these conditions have been met. Condition 14 has been confirmed by DWER as completed.</p>
MS 1036: M8-4	<p>In the event that monitoring indicates exceedance of trigger criteria and/or threshold criteria specified in the Condition Environmental Management Plans, the proponent shall:</p> <ul style="list-style-type: none"> • Report the exceedance in writing within 7 days of the exceedance being identified. • Immediately implement the trigger level actions and/or threshold contingency actions specified in the 	<p>Report the exceedance within 7 days of the exceedance being identified.</p> <p>Implement the trigger level/ contingency actions specified in the Condition Environmental</p>	Exceedance Reports (8-4(1)). Investigation Reports (8-4(6)).	Overall	<p>Report exceedance with seven (7) days of being identified.</p> <p>Provide investigation report required by 8-4(6) within 60 days of exceedance being reported to the CEO.</p>	C	<p>Non-conformances and potential non-conformances with exceedance levels were reported within 7 days of being identified and an investigation report detailing Condition 7-4 (4) was provided to the CEO within 60 days of reporting the incident.</p> <p>Evidence of DWER notifications/response: L24_04</p> <p>Evidence of investigation reports:</p>

Compliance Assessment Report

NorthLink WA Perth-Darwin National Highway (Swan Valley Section)



Condition	Requirement	How	Evidence	Phase	Timeframe	Status	Further Information
	<p>Condition Environmental Management Plans and continue implementation of those actions until the trigger criteria are being met, or until the CEO has confirmed by notice in writing that it has been demonstrated that the environmental outcomes in conditions 13-1 and 14-1 are being met and implementation of the trigger level actions and/or threshold contingency actions are no longer required.</p> <ul style="list-style-type: none"> Investigate to determine the cause of the trigger criteria and/or threshold criteria being exceeded. Identify additional measures required to prevent the trigger and/or threshold criteria being exceeded in the future. Investigate to determine potential environmental harm or alteration of the environment that occurred due to threshold criteria being exceeded. Provide a report to the CEO within 60 days of the exceedance being reported. The report shall include: <ul style="list-style-type: none"> Details of trigger level actions or threshold contingency actions implemented. The effectiveness of the trigger level actions or threshold contingency actions implemented, monitored and measured against trigger criteria and threshold criteria. 	<p>Management Plan(s). Investigate cause of trigger and or threshold criteria exceedance. Identify additional measures to prevent trigger/threshold criteria being exceeded in the future. Investigate potential environmental harm or alteration of the environment due to threshold exceedance. Submit a report consistent with condition 8-4(6) to CEO within 60 days of the exceedance being reported under condition 8-4(1).</p>					R24_04

MS

Compliance Assessment Report

NorthLink WA Perth-Darwin National Highway (Swan Valley Section)



Condition	Requirement	How	Evidence	Phase	Timeframe	Status	Further Information
	<ul style="list-style-type: none"> The findings of the investigations required by condition 8-4(3) and 8-4(5). Additional measures to prevent the trigger or threshold criteria being exceeded in the future. Measures to prevent, control or abate the environmental harm which may have occurred. 						
MS 1036: M8-5	The proponent: <ul style="list-style-type: none"> May review and revise the Condition Environmental Management Plans. Shall review and revise the Condition Environmental Management Plans as and when directed by the CEO. 	Revise Condition Environmental Management Plan(s).	Revised Condition Environmental Management Plan(s).	Overall	As required.	C	No Condition EMPs have been reviewed and revised within the current reporting period
MS 1036: M8-6	The proponent shall implement the latest revision of the Condition Environmental Management Plan(s), which the CEO has confirmed by notice in writing, satisfies the requirements of condition 8-2.	Implement the revised Condition Environmental Management Plan(s).	CAR.	Overall	Once revisions are approved in writing by the CEO.	C	The Proponent continues to implement the revised and/or approved plans that are still current with remaining conditions.

Compliance Assessment Report

NorthLink WA Perth-Darwin National Highway (Swan Valley Section)



Condition	Requirement	How	Evidence	Phase	Timeframe	Status	Further Information
Flora and Vegetation – Construction Condition Environmental Management Plan							
MS 1036: M9-1	<p>The proponent shall manage the construction of the proposal to meet the following environmental objectives:</p> <ul style="list-style-type: none"> • To ensure that <i>Phytophthora cinnamomi</i> is not introduced into disease free areas by construction activities during construction. • To ensure that impacts to flora and vegetation from dust are minimised as far as practicable during construction. • To ensure that impacts to flora and vegetation from the introduction or spread of weeds are minimised as far as practicable during construction. <p>Through implementation of the Flora and Vegetation – Construction Condition Environmental Management Plan approved by the CEO.</p>	Implement the Flora and Vegetation - Construction Condition Environmental Management Plan to manage <i>Phytophthora cinnamomi</i> , dust and weeds.	Flora and Vegetation – Construction Condition Environmental Management Plan. CEO approval.	Construction	During construction of the proposal.	C	<p>Post-construction monitoring is required for 3 years and was undertaken by Emerge Associates during the reporting period.</p> <p>The results and outcomes of post-construction monitoring completed in the reporting period are provided in Table 2 of Section 4.2.1.</p> <p>All management targets (which are used to measure achievement against the environmental objectives) were determined to be met for the reporting period demonstrating all environmental objectives were met during the reporting period.</p>
MS 1036: M9-2	The proponent shall prepare the Flora and Vegetation – Construction Condition Environmental Management Plan required by condition 7-1 on advice of the Department of Parks and Wildlife.	Prepare the Flora and Vegetation - Construction Condition Environmental Management Plan to meet the environmental objectives set out in condition 9-1.	Flora and Vegetation – Construction Condition Environmental Management Plan.	Pre-construction	Prior to the commencement of ground disturbing activities, or as otherwise agreed in writing by the CEO.	CLD	Department of Parks and Wildlife comments sought and provided as detailed in 2017 CAR (Coffey 2017).

MS

Compliance Assessment Report

NorthLink WA Perth-Darwin National Highway (Swan Valley Section)



Condition	Requirement	How	Evidence	Phase	Timeframe	Status	Further Information
MS 1036: M9-3	For the purpose of establishing management targets as required by condition 7-2(2), if adequate site specific <i>Phytophthora cinnamomi</i> and weed mapping is not available the proponent shall undertake baseline surveys prior to ground disturbing activities, or as agreed by the CEO.	Prepare a Baseline Survey Plan if adequate site specific mapping is not available.	Baseline Survey Mapping.	Pre-construction	Prior to ground disturbing activities, or as agreed by the CEO (if adequate site specific mapping is not available).	CLD	OEPA considered conditions 9-3 to 9-5 not applicable as detailed in 2017 CAR (Coffey 2017).
MS 1036: M9-4	In the event baseline surveys are required, prior to the commencement of ground disturbing activities the proponent shall prepare in consultation with the Department of Parks and Wildlife, and submit a Baseline Survey Plan(s) to the CEO. The Baseline Survey Plan(s) shall: <ul style="list-style-type: none"> • When implemented, determine the baseline state of areas identified in condition 9-4(3) so that ongoing monitoring can determine that conditions 9-1(1) and 9-1(3) are being met. • Detail the proposed methodology for the baseline surveys. • Identify and spatially define the proposed survey locations and reference/control sites and provide rationale for the location of the sites. • Include a description and map of the areas that are free from <i>Phytophthora cinnamomi</i>. • Include a description and map of the areas that are free from weeds and for those areas that contain weeds, 	Prepare a Baseline Survey Plan if adequate site specific mapping is not available.	Baseline Survey Plan - <i>Phytophthora cinnamomi</i> and weed.	Pre-construction	In the event baseline surveys are required, prior to the commencement of ground disturbing activities.	CLD	As for M9-3.

Compliance Assessment Report

NorthLink WA Perth-Darwin National Highway (Swan Valley Section)



Condition	Requirement	How	Evidence	Phase	Timeframe	Status	Further Information
	provide the level of weed cover and type. • Detail the proposed frequency and timing for the baseline surveys.						
MS 1036: M9-5	After receiving notice in writing from the CEO that the Baseline Survey Plan(s) satisfies the requirements of condition 9-4, the proponent shall undertake the baseline surveys in accordance with the requirements of the Baseline Survey Plan(s). On completion of the baseline surveys the proponent shall report to the CEO on the following: • Completion of the baseline surveys in accordance with the Baseline Survey Plan(s). • The results of the baseline surveys.	Undertake baseline surveys in accordance with the approved Baseline Survey Plan.	CAR. CEO approval of Baseline Survey Plan. Baseline Survey.	Pre-construction	Upon receiving written notice from the CEO that the Baseline Survey Plan is satisfactory.	CLD	As for M9-3.
MS 1036: M9-6	The proponent shall undertake monitoring as required by condition 7-2(3) for a period of 3 years post construction in order to demonstrate that the environmental objectives for condition 9-1 have been met.	Undertake monitoring in accordance with 7-2(3).	CAR.	Operation	Three (3) years post construction.	C	The first post-construction monitoring event was in Spring 2020, the second monitoring event completed in Spring 2021, and the third in Spring 2022. All were completed in accordance with the CEMP requirements. Condition 9-1, 9-8 and 9-9 have been completed.
MS 1036: M9-7	In the event that monitoring required by condition 9-6 indicates that the environmental objectives for conditions 9-1 have not been met the proponent shall undertake the requirements of condition 7-4.	Report exceedance within seven (7) days. Investigate cause. Provide a report to CEO within 60 days.	CAR. Notification of exceedance. Report to CEO.	Operation	Three (3) years post construction.	C	Spring 2020 and Spring 2021 post-construction monitoring events have been undertaken. The spring 2022 post-construction monitoring event (3 rd) occurred during this reporting period. No non-conformances or potential non-conformances were identified during this reporting period and as such, MS 1036: 7-4 is not applicable.

MS

Compliance Assessment Report

NorthLink WA Perth-Darwin National Highway (Swan Valley Section)



Condition	Requirement	How	Evidence	Phase	Timeframe	Status	Further Information
MS 1036: M9-8	The proponent shall not undertake clearing or construct any laydown areas or stockpiles within the 50 m buffer of <i>Caladenia huegelii</i> , as delineated in figure 2 of Schedule 1 and defined by geographic coordinates in Schedule 2.	Implement an exclusion zone for the 50 m buffer for <i>Caladenia huegelii</i> .	CAR. Clearing shapefiles	Overall	During design and construction.	CLD	DWER have confirmed (7 Feb 2024) that this condition is completed.
MS 1036: M9-9	The proponent shall not undertake clearing or construct any laydown areas or stockpiles within the 10 m buffer, as delineated in figure 3 of Schedule 1 and defined by geographic coordinates in Schedule 2, of: <ul style="list-style-type: none"> • <i>Grevillea curviloba</i> subsp. <i>incurva</i>. • <i>Darwinia foetida</i>. 	Implement an exclusion zone for the 10 m buffer for <i>Grevillea curviloba</i> subsp. <i>incurva</i> ; and <i>Darwinia foetida</i> .	CAR. Letter from DWER (L22-001 in Appendix C)	Overall	During design and construction.	CLD	DWER have confirmed (7 Feb 2024) that this condition is completed.
Flora and Vegetation – Indirect Impacts and Threatened Flora and Communities Condition Environmental Management Plan – MS1116							
MS 1116: M10-1	The proponent shall manage the implementation of the proposal to meet the following environmental objectives: <ul style="list-style-type: none"> • to ensure that indirect impacts, including but not limited to weeds, unauthorised access, increased fire risk and litter, changes to surface water regimes, to flora and vegetation, including but not limited to <i>Caladenia huegelii</i> habitat, <i>Grevillea curviloba</i> subsp. <i>incurva</i>, <i>Darwinia foetida</i>, Conservation Category Wetlands and Communities of Tumulus Springs (Organic Mound Springs, Swan Coastal Plain) are minimised as far as practicable; and 	Prepare and Implement a Flora and Vegetation – Indirect Impacts and Threatened Flora and Communities Condition Environmental Management Plan to meet the environmental objectives of condition M10-1.	Flora and Vegetation – Indirect Impacts and Threatened Flora and Communities Condition Environmental Management Plan. CAR.	Overall	During the implementation of the proposal.	C	MRWA wrote to DWER to request completion of Condition 10 of MS1116 under the IITFC CEMP. DWER advised 7 February 2024 that in accordance with Condition 7-3(2) of MS 1036 that MRWA is still required to continue to implement Condition 10 IITFC CEMP. DWER considers the Condition 10 IITFC CEMP required by MS1116 still applies and the proposal should continue to be managed to meet the environmental objectives of this condition Emerge Associates undertook the required post-construction monitoring on multiple days in October, November and December 2023 and multiple days in March and July 2024. (R24_08) Supporting evidence demonstrating compliance with post-construction environmental objectives

Compliance Assessment Report

NorthLink WA Perth-Darwin National Highway (Swan Valley Section)



Condition	Requirement	How	Evidence	Phase	Timeframe	Status	Further Information
	<ul style="list-style-type: none"> to maintain or improve the condition of the remaining extent of SCP 20a as shown in Figure 4 of Ministerial Statement 1036, through implementation of the Flora and Vegetation – Indirect Impacts and Threatened Flora and Communities Condition Environmental Management Plan approved by the CEO. 						<p>10-1(1) of MS 1116 and showing all targets of the IITFC CEMP have been met are as follows:</p> <ul style="list-style-type: none"> No evidence of indirect impact to native cover, native species richness or weeds more than 10 m from the new edge of native vegetation adjacent to Communities of Tumulus Springs (Organic Mound Springs, Swan Coastal Plain) and Conservation Category Wetlands was recorded. Changes in native cover, native species richness or weeds were recorded in some transects. No evidence of indirect impact to native cover, native species richness or weeds more than 10 m from the new edge of native vegetation in areas of <i>Caladenia huegelii</i> habitat. The two individuals of <i>Grevillea curviloba</i> subsp. <i>incurva</i> in the Brand Highway road reserve at Muchea identified within the CEMP were maintained, and the population increased to four The number of individuals of <i>Darwinia foetida</i> in the Great Northern Highway road reserve at Muchea was maintained, and the population increased from 26 to 86. The condition of remaining extent of SCP20a as shown in Figure 4 of Ministerial Statement 1036 was maintained or improved <p>The condition environmental objectives and management targets for the project outlined in the IITFC CEMP were met during the reporting period.</p>

MS

Compliance Assessment Report

NorthLink WA Perth-Darwin National Highway (Swan Valley Section)



Condition	Requirement	How	Evidence	Phase	Timeframe	Status	Further Information
MS 1116: M10-2	The proponent shall prepare the Flora and Vegetation – Indirect Impacts and Threatened Flora and Communities Condition Environmental Management Plan required by condition 7-1 of Ministerial Statement 1036 on advice of the Department of Biodiversity, Conservation and Attractions.	Prepare a Flora and Vegetation – Indirect Impacts Threatened Flora and Communities Condition Environmental Management Plan to meet the environmental objectives in condition 7-1.	Flora and Vegetation – Indirect Impacts Threatened Flora and Communities Condition Environmental Management Plan	Overall	During the implementation of the proposal.	CLD	<p>MRWA wrote to DWER to request completion of Condition 10 of MS1116 under the IITFC CEMP. DWER advised 7 February 2024 that in accordance with Condition 7-3(2) of MS 1036 that MRWA is still required to continue to implement Condition 10 IITFC CEMP. DWER considers the Condition 10 IITFC CEMP required by MS1116 still applies and the proposal should continue to be managed to meet the environmental objectives of this condition</p> <p>Emerge Associates undertook the required post-construction monitoring on multiple days in October, November and December 2023 and multiple days in March and July 2024. (R24_08)</p> <p>The monitoring determined that the condition of remaining extent of SCP20a as shown in Figure 4 of Ministerial Statement 1036 was maintained or improved (R24_08)</p> <p>Relevant management target/s and associated environmental objective met for reporting period.</p>

Flora and Vegetation – Progressive Rehabilitation Condition Environmental Management Plan

MS 1036: M11-1	<p>The proponent shall manage the implementation of the proposal to meet the following environmental objectives:</p> <p>1. To progressively rehabilitate the areas of native vegetation cleared as a result of implementation of the proposal that are no longer required for construction activities</p>	Implement the Flora and Vegetation – Progressive Rehabilitation Condition Environmental Management Plan.	CAR.	Overall	Rehabilitate section of Beechboro Rd North from Jules Steiner Memorial Drive to Gnangara Rd within twelve months of decommissioning.	C	No areas of native vegetation within the development envelope were temporarily cleared and therefore no management actions are required in relation to Condition 11-1(1), as outlined in Section 2.3 of the CEMP. No clearing solely for temporary activities was conducted, therefore this environmental objective is met as described in the Flora and Vegetation – Progressive Rehabilitation CEMP.
-------------------	---	--	------	---------	--	---	--

Compliance Assessment Report

NorthLink WA Perth-Darwin National Highway (Swan Valley Section)



Condition	Requirement	How	Evidence	Phase	Timeframe	Status	Further Information
	<p>or not required for ongoing operations.</p> <p>2. To rehabilitate the section of Beechboro Road North from Jules Steiner Memorial Drive to Gngara Road within twelve months of decommissioning this section of road.</p> <p>Through implementation of the Flora and Vegetation –Progressive Rehabilitation Condition Environmental Management Plan approved by the CEO.</p>						<p>Main Roads commenced rehabilitation of the redundant section of Beechboro Road North in August 2019 (within 12 months of decommissioning), in accordance with Condition 11-1(2), with practical completion of revegetation works achieved in late 2019.</p> <p>Ecoscape undertook post-revegetation monitoring in summer 2022 (3rd year of monitoring), which determined that five of the seven completion criteria had not been met. Further monitoring in 2023 and 2024 by Gambara (R24_07) indicated that respective completion criteria were again not met.</p> <p>DWER was notified of this failure to achieve completion criteria, and accordingly Management Target 2 of the CEMP, initially in November 2022 in accordance with Condition 7-4.</p> <p>The failure to achieve the management target is due to difficult site conditions, which includes poor seed germination within in-situ soils, extreme heat and heavy predation by local fauna. The ongoing lack of success at this site is largely due to predation by kangaroos and to a lesser extent by rabbits.</p> <p>Main Roads has previously reported a potential non-compliance with the status of Condition 11.1(2), however following subsequent review of the compliance status of Condition 11.1(2), it has identified that it is compliant as the rehabilitation via implementation of the plan was undertaken. However as the completion criteria (and</p>

MS

Compliance Assessment Report

NorthLink WA Perth-Darwin National Highway (Swan Valley Section)



Condition	Requirement	How	Evidence	Phase	Timeframe	Status	Further Information
							<p>subsequently Management Target 2) have not been met, the appropriate management actions have been applied consistent with the proposed adaptive management protocols outlined in the CEMP.</p> <p>Main Roads has implemented a range of additional rehabilitation management actions with the aim of achieving the outstanding completion criteria, such that the management target can be met. This has included the installation of 435m of fauna exclusion fencing and an additional 5,776 infill plants in July 2022 as a trial to see if this protects planting from predation. An additional 832 infill plants were installed in August 2024 (by Gambara) within and adjacent to the fenced areas.</p> <p>Main Roads will continue to implement management actions as required to achieve the completion criteria.</p>
MS 1036: M11-2	The proponent shall identify and map areas to be rehabilitated as required by condition 11-1.	Maintain a map of areas identifying areas to be rehabilitated. Include information regarding rehabilitation in the CAR.	CAR.	Overall	During the implementation of the proposal.	CLD	OEPA approval outlined condition has been met, as reported in the 2017 CAR (Coffey 2017).

Compliance Assessment Report

NorthLink WA Perth-Darwin National Highway (Swan Valley Section)



Condition	Requirement	How	Evidence	Phase	Timeframe	Status	Further Information
MS 1036: M11-3	Those areas to be rehabilitated as identified in condition 11-2 shall not include areas required for ongoing operations including, but not limited to, drainage basins, road embankments and median strips.	Do not rehabilitate areas required for ongoing operations including, but not limited to, drainage basins, road embankments and median strips.	CAR.	Overall	During the implementation of the proposal.	CLD	Regarding MS 1036: 11-2. The revegetation and landscaping plan only applies to Beechboro Road North and areas of native vegetation cleared for temporary project works and not part of the road reserve.
MS 1036: M11-4	The proponent shall prepare the Flora and Vegetation – Progressive Rehabilitation Condition Environmental Management Plan required by condition 7-1 on advice of the Department of Parks and Wildlife.	Prepare a Flora and Vegetation Progressive Rehabilitation Condition Environmental Management Plan to meet the environmental objectives in condition 11-2.	Flora and Vegetation – Progressive Rehabilitation Condition Environmental Management Plan.	Overall	Prior to the commencement of ground disturbing activities, or as otherwise agreed in writing by the CEO.	CLD	As for MS 1036: 11-2.
MS 1036: M11-5	The management targets as required by condition 7-2(2) must include rehabilitation completion criteria using locally native species.	Include completion criteria in the Prepare a Flora and Vegetation Progressive Rehabilitation Condition Environmental Management Plan.	Flora and Vegetation – Progressive Rehabilitation Condition Environmental Management Plan.	Overall	Prior to ground disturbing activities, or as otherwise agreed in writing by the CEO.	CLD	As for MS 1036: M11-2.

MS

Compliance Assessment Report

NorthLink WA Perth-Darwin National Highway (Swan Valley Section)



Condition	Requirement	How	Evidence	Phase	Timeframe	Status	Further Information
MS 1036: M11-6	The proponent shall not plant known species of foraging habitat for Black Cockatoos, including but not limited to, <i>Banksia spp.</i> , <i>Hakea spp.</i> , <i>Grevillea spp.</i> and <i>Eucalyptus spp.</i> within 10 m of the constructed road carriageway.	Do not plant known species of foraging habitat within 10 m of constructed road carriageway.	CAR. Flora and Vegetation – Progressive Rehabilitation Condition Environmental Management Plan.	Overall	During rehabilitation	C	Beechboro Road North rehabilitation is greater than 10 m from the road alignment. No planting has occurred within 10 m of the of the constructed road carriageway.
Fauna – Construction Condition Environmental Management Plan							
MS 1036: M12-1	The proponent shall manage the construction of the proposal to meet the following environmental objective: <ul style="list-style-type: none"> To ensure that impacts to conservation significant fauna are minimised as far as practicable during final design and construction of the proposal. Through implementation of the Fauna – Construction Condition Environmental Management Plan, approved by the CEO.	Prepare and Implement a Fauna – Construction Condition Environmental Management Plan that meets the environmental objectives of the condition 12-1.	Fauna – Construction Condition Environmental Management Plan. CAR. CEO approval.	Overall	During design and construction.	CLD	DWER have confirmed (7 Feb 2024) that this condition is completed.
MS 1036: M12-2	The proponent shall prepare the Fauna – Construction Condition Environmental Management Plan required by condition 7-1 on advice of the Department of Parks and Wildlife.	Prepare a Fauna – Construction Condition Environmental Management Plan that meets the environmental objectives of the condition 12-1 on advice of DPAW.	Fauna – Construction Condition Environmental Management Plan. DPaW advice.	Overall	Prior to the commencement of ground disturbing activities, or as otherwise agreed in writing by the CEO.	CLD	DWER have confirmed (7 Feb 2024) that this condition is completed.

Compliance Assessment Report

NorthLink WA Perth-Darwin National Highway (Swan Valley Section)



Condition	Requirement	How	Evidence	Phase	Timeframe	Status	Further Information
MS 1036: M12-3	<p>The Fauna – Construction Condition Environmental Management Plan shall include management actions, including but not limited to:</p> <ul style="list-style-type: none"> • Best practice design, including shape, size, furniture and sky lights of fauna underpasses. • Trapping and relocation of ground dwelling fauna prior to clearing; • Presence of fauna spotters during clearing. • Dispersal and relocation of fauna identified by fauna spotters as required by condition 12-3(3) during clearing. • Any trenching activities. • Ensuring that if clearing is to be undertaken, the proponent shall use an appropriately experienced Black Cockatoo expert to thoroughly inspect the area for Black Cockatoo breeding activity, in particular nesting, and if the area is found to be in use, clearing in the area shall be postponed until such time as determined suitable, on the advice of the Department of Parks and Wildlife. 	Prepare a Fauna – Construction Condition Environmental Management Plan that includes the information required by condition 12-3.	Fauna – Construction – Condition Environmental Management Plan.	Overall	Prior to the commencement of ground disturbing activities, or as otherwise agreed in writing by the CEO.	CLD	DWER have confirmed (7 Feb 2024) that this condition is completed.
Inland Waters Environmental Quality – Hydrological Processes Condition Environmental Management Plan							
MS 1036: M13-1	<p>The proponent shall manage the construction and operation of the proposal to meet the following environmental outcomes:</p> <ul style="list-style-type: none"> • The construction and operation of the proposal shall not result in an 	Prepare and implement the Inland Waters Environmental Quality – Hydrological	Inland Waters Environmental Quality – Hydrological Processes Condition	Overall	During implementation of the proposal. Period of 5 years post construction.	C	Post-construction monitoring is required for 3 years and was undertaken by Emerge Associates during the reporting period.

Compliance Assessment Report

NorthLink WA Perth-Darwin National Highway (Swan Valley Section)



Condition	Requirement	How	Evidence	Phase	Timeframe	Status	Further Information
	<p>unacceptable decline in water quality of the GUWPCA; and</p> <ul style="list-style-type: none"> The construction and operation of the proposal shall not result in an unacceptable decline in water quality of the Ellen Brook as confirmed by monitoring for a period of 5 years post construction. Through implementation of the Inland Waters Environmental Quality – Hydrological Processes Condition Environmental Management Plan approved by the CEO. 	Processes Condition Environmental Management Plan that meets the environmental objectives in condition 13-1.	Environmental Management Plan. CAR.				<p>The results and outcomes of post-construction monitoring completed in the reporting period are provided in Table 3 of Section 4.2.2.</p> <p>Exceedances of some threshold criteria were recorded during the 2024 monitoring events, however none were determined to be project attributable.</p> <p>All environmental criteria were determined to be met and as such all environmental outcomes were achieved for the reporting period.</p> <p>R24_04 Condition Environmental Management Plan Exceedances Report MRWA Northlink Post Construction Monitoring</p>
MS 1036: M13-2	The proponent shall prepare the Inland Waters Environmental Quality – Hydrological Processes Condition Environmental Management Plan required by condition 8-1 on advice of the Department of Water.	Prepare the Inland Waters Environmental Quality – Hydrological Processes Condition Environmental Management Plan that meets the environmental objectives in condition 13-1.	Inland Waters Environmental Quality – Hydrological Processes Condition Environmental Management Plan. CEO approval.	Overall	Prior to the commencement of ground disturbing activities, or as otherwise agreed in writing by the CEO.	CLD	<p>Ground disturbing activities commenced on 31 March 2017.</p> <p>Baseline data was collected from December 2015 to May 2017.</p> <p>Supporting evidence provided in 2018 CAR (ELA 2018)</p>

Compliance Assessment Report

NorthLink WA Perth-Darwin National Highway (Swan Valley Section)



Condition	Requirement	How	Evidence	Phase	Timeframe	Status	Further Information
MS 1036: M13-3	For the purpose of establishing trigger criteria as required by condition 8-2(1), if adequate site specific water quality data is not available the proponent shall undertake baseline surveys prior to the commencement of ground disturbing activities in the GUWPCA and in the vicinity of Ellen Brook.	Undertake baseline surveys in accordance with a CEO approved Baseline Survey Plan if adequate site specific data is not available.	CAR.	Pre-construction	If adequate site-specific water quality data is not available.	CLD	OEPA approval stated Conditions 13-4, 13-4(2), 13-4(3) and 13-4(4) have been met, as reported in 2017 CAR (Coffey 2017).
MS 1036: M13-4	In the event baseline surveys are required, the proponent shall prepare in consultation with the Department of Water and submit a Baseline Survey Plan to the CEO. The Baseline Survey Plan shall: <ul style="list-style-type: none"> • When implemented, determine the baseline water quality within the GUWPCA and the Ellen Brook. • Detail the proposed methodology for the baseline surveys. • Identify and spatially define the proposed survey locations and reference/control sites and provide rationale for the location of the sites. • Detail the proposed frequency and timing for the baseline surveys. 	Prepare a Baseline Survey Plan if adequate site specific baseline data is not available.	Baseline Survey Plan – Environmental Quality – Hydrological Processes.	Pre-construction	Prior to the commencement of ground disturbing activities.	CLD	OEPA approval stated Conditions 13-4, 13-4(2), 13-4(3) and 13-4(4) have been met, as reported in 2017 CAR (Coffey 2017).

MS

Compliance Assessment Report

NorthLink WA Perth-Darwin National Highway (Swan Valley Section)



Condition	Requirement	How	Evidence	Phase	Timeframe	Status	Further Information
MS 1036: M13-5	After receiving notice in writing from the CEO that the Baseline Survey Plan satisfies the requirements of condition 13-4, the proponent shall undertake the baseline surveys in accordance with the requirements of the Baseline Survey Plan.	Undertake baseline surveys in accordance with the CEO approved Baseline Survey Plan – Environmental Quality – Hydrological Processes.	Baseline Survey Plan – Environmental Quality – Hydrological Processes Report.	Overall	After receiving written notice from the CEO that the Baseline Survey Plan – Environmental Quality – Hydrological Processes is satisfactory.	CLD	Baseline survey completed in accordance with the approved Baseline Survey Plan as outlined in 2017 CAR (Coffey 2017).
MS 1036: M13-6	On completion of the baseline surveys the proponent shall report to the CEO on the following: • Completion of the baseline surveys in accordance with the Baseline Survey Plan. • The results of the baseline surveys.	Submit a Baseline Survey Report.	Baseline Survey Plan – Environmental Quality – Hydrological Processes Report.	Overall	On completion of the baseline surveys.	CLD	The Baseline Survey Report was issued in October 2017. Evidence was provided in 2018 CAR (ELA 2018).
MS 1036: M13-7	The proponent shall specify threshold criteria that are consistent with the Australian Drinking Water Guidelines (NHMRC & ARMCANZ 1996), or its revisions, as required by condition 8-2(2).	Include appropriate Australian Drinking Water Guidelines (NHMRC & ARMCANZ 1996) threshold criteria in the Inland Waters Environmental Quality – Hydrological Processes CEMP.	Inland Waters Environmental Quality – Hydrological Processes Condition Environmental Management Plan.	Pre-construction	Prior to the commencement of ground disturbing activities.	CLD	OEPA approval stated this condition has been met, as reported in 2017 CAR (Coffey 2017).

Compliance Assessment Report

NorthLink WA Perth-Darwin National Highway (Swan Valley Section)



Condition	Requirement	How	Evidence	Phase	Timeframe	Status	Further Information
MS 1036: M13-8	The proponent shall not construct any laydown areas, stockpiles or store chemicals within the well head protection zones in the GUWPCA.	Do not locate laydown or stockpiles or store chemicals within in the well head protection zones.	CAR.	Overall	During the implementation of the proposal.	C	The proponent has not constructed any laydown areas, stockpiles or stored chemicals within the wellhead protection zones of the GUWPCA.
MS 1036: M13-9	Any fuel or chemicals stored within the GUWPCA shall: <ul style="list-style-type: none"> • Be contained within double-lined fuel storage tanks. • Not exceed an individual storage tank capacity of 5,000 L. • Be placed in bunds capable of storing 125% of the capacity of the largest storage tank. • Not be located within well head protection zones. 	Ensure fuel or chemicals are stored in double line tanks and do not exceed an individual storage capacity of 5000 L. Tanks will be self-bunded or located on a bunded area capable of storing 125% of the largest storage tank.	CAR.	Overall	During construction of the proposal.	C	All chemical storage locations were decommissioned prior to commencement of this reporting period.
MS 1036: M13-10	The proponent shall not construct infiltration basins, including bio-retention basins, within 100 m of drinking water production wells within the GUWPCA.	Ensure there are no infiltration basins, including bio-retention basins to be constructed within 100 m of the water production wells in the GUWPCA.	CAR.	Overall	During design and construction of the project.	C	The proponent has not constructed infiltration basins, including bio-retention basins, within 100 m of drinking water production wells within the GUWPCA.

MS

Compliance Assessment Report

NorthLink WA Perth-Darwin National Highway (Swan Valley Section)



Condition	Requirement	How	Evidence	Phase	Timeframe	Status	Further Information
Flora and Vegetation – Inland Waters Condition Environmental Management Plan MS1116							
MS 1116: M14-1	<p>The proponent shall manage the construction of the proposal to meet the following environmental outcomes:</p> <ul style="list-style-type: none"> • To ensure that construction and operation of the proposal, including from dewatering and groundwater abstraction, does not result in indirect impacts to the Communities of Tumulus Springs (Organic Mound Springs, Swan Coastal Plain) and Conservation Category Wetlands as shown in Figures 5 of Ministerial Statement 1036 and Figure 6 attached to this Statement [Ministerial Statement 1116]; and • To ensure that construction of the proposal maintains predevelopment surface water flows to the <i>Darwinia foetida</i>, Communities of Tumulus Springs (Organic Mound Springs, Swan Coastal Plain) and Conservation Category Wetlands as shown in Figures 3 and 5 of Ministerial Statement 1036 and Figure 6 attached to this Statement [Ministerial Statement 1116], through implementation of the Flora and Vegetation – Inland Waters – Condition Environmental Management Plan approved by the CEO. 	Prepare and implement the Flora and Vegetation – Inland Waters Condition Environmental Management Plan that meets the environmental objectives in condition 14-1.	Flora and Vegetation – Inland Waters Condition Environmental Management Plan. CAR. CEO approval.	Overall	During construction and operation of the proposal.	C	<p>Post-construction monitoring is required for 3 years and was undertaken by Emerge Associates during the reporting period.</p> <p>The results and outcomes of post-construction monitoring completed in the reporting period are provided in Table 3 of Section 4.2.2.</p> <p>Exceedances of some threshold criteria were recorded during the 2024 monitoring events, however none were determined to be project attributable. It is considered unlikely to be project attributable, discussed further in Table 3 of Section 4.2.2. (R24_04)</p> <p>As such, all environmental criteria were determined to be met (or considered likely to be met pending additional sampling and analysis outcomes) and as such all environmental outcomes were achieved for the reporting period.</p>

MS

Compliance Assessment Report

NorthLink WA Perth-Darwin National Highway (Swan Valley Section)



Condition	Requirement	How	Evidence	Phase	Timeframe	Status	Further Information
MS 1116: M14-2	The proponent shall prepare the Flora and Vegetation – Inland Waters Condition Environmental Management Plan required by condition 8-1 of Ministerial Statement 1036 on advice of the Department of Water and Environmental Regulation and the Department of Biodiversity, Conservation and Attractions.	Prepare and implement the Flora and Vegetation – Inland Waters Condition Environmental Management Plan.	Flora and Vegetation – Inland Waters Condition Environmental Management Plan. Department of Water and Environmental Regulation (DWER) and DBCA advice.	Pre-construction	Prior to the commencement of ground	CLD	OEPA approval stated this condition has been met, as reported in the 2017 CAR (Coffey 2017). The Flora and Vegetation – Inland Waters Condition Environmental Management Plan was originally approved by the CEO on 15 March 2017. The Flora and Vegetation -Inland Waters CEMP Rev 10, was amended in accordance with DWER's instruction of 6 December 2019 and approved 27 February 2020.
MS 1116: M14-3	The proponent shall determine the trigger and threshold criteria required by conditions 8-2(1) and 8-2(2) of Ministerial Statement 1036 based on the results of baseline surveys.	Conduct baseline surveys prior to ground disturbance in accordance with the Baseline Survey Plan – Inland Waters – Environmental Quality.	CAR.	Pre-construction	Prior to the commencement of ground disturbing activities.	CLD	Baseline survey completed between December 2015 and May 2017 as reported in the 2018 CAR (Coffey 2017).
MS 1116: M14-4	The proponent shall undertake monitoring as required by condition 8-2(3) of Ministerial Statement 1036 for a period of three (3) years, or as otherwise agreed in writing by the CEO, post construction in order to demonstrate that the outcomes in conditions 14-1(1) and 14-1(2) have been met.	Undertake monitoring in accordance with the Flora and Vegetation – Inland Waters Condition Environmental Management Plan.	Flora and Vegetation – Inland Waters Condition Environmental Management Plan Monitoring report.	Overall	A Period of 3 years post-construction, or as otherwise agreed in writing by the CEO.	C	The condition environmental objectives and management targets for the project outlined in the IITFC CEMP were met during the reporting period. (R24_08).

MS

Compliance Assessment Report

NorthLink WA Perth-Darwin National Highway (Swan Valley Section)



Condition	Requirement	How	Evidence	Phase	Timeframe	Status	Further Information
MS 1116: M14-5	In the event that monitoring required by condition 14-4 indicates that the outcomes in condition 14-1(1) and 14-1(2) have not been met the proponent shall undertake the requirements of condition 8-4 of Ministerial Statement 1036.	Assess monitoring results against triggers and thresholds.	Monitoring report. CAR.	Operation	Notify CEO within 7 days and provide a report within 60 days of exceedance being identified.	C	Exceedances were reported to DWER in accordance with the specified timeframes of condition 8.4 L24_04
MS 1116: M14-6	The proponent shall not construct laydown areas or stockpiles within 50 m of <i>Communities of Tumulus Springs (Organic Mound Springs, Swan Coastal Plain)</i> and Conservation Category Wetlands as shown in Figure 5 of Ministerial Statement 1036 and Figure 6 attached to this Statement (Ministerial Statement 1116).	Do not locate laydown or stockpiles within 50 m of <i>Claypans of the Swan Coastal Plain and Communities of Tumulus Springs (Organic Mound Springs, Swan Coastal Plain)</i> or Conservation Category Wetlands.	CAR.	Overall	During construction of the proposal.	CLD	Not applicable to post-construction activities.

Compliance Assessment Report

NorthLink WA Perth-Darwin National Highway (Swan Valley Section)



Condition	Requirement	How	Evidence	Phase	Timeframe	Status	Further Information
Amenity (Noise) Condition Environmental Management Plan							
MS 1036: M15-1	<p>The proponent shall construct the proposal to meet the following environmental objectives:</p> <ul style="list-style-type: none"> To ensure that impacts to the noise amenity of existing sensitive receptors delineated in figure 7 of Schedule 2, as a result of the ongoing operation of the proposal are minimised as low as reasonably practicable. To ensure that the impacts to the noise amenity of existing sensitive receptors, are consistent with section 5.3 of State Planning Policy 5.4 for properties south of Maralla Road. <p>Through implementation of the Amenity (Noise) Condition Environmental Management Plan, approved by the CEO.</p>	Prepare and implement an Amenity (Noise) Condition Environmental Management Plan to meet the environmental objectives in condition 15-1.	Amenity (Noise) Condition Environmental Management Plan. CAR. CEO approval.	Overall	During design and construction of the proposal.	C	<p>The Amenity (Noise) Condition Environmental Management Plan was revised and approved by the CEO on 13 March 2019.</p> <p>Post-construction monitoring is required under the CEMP. The results and outcomes of post-construction monitoring completed in the reporting period are provided in Table 2 of Section 4.2.1. (R24_01)</p> <p>All management targets (which are used to measure achievement against the environmental objectives) were determined to be met for the reporting period, demonstrating all environmental objectives were met during the reporting period (R24_01).</p> <p>MRWA will request DWER for completion and closure of this condition in 2025 based on positive results of five years of monitoring</p>
MS 1036: M15-2	<p>The Amenity (Noise) Condition Environmental Management Plan shall include management actions for:</p> <ul style="list-style-type: none"> The design of noise mitigation measures, including but not limited to noise attenuation barriers and noise walls. The procedures to monitor the effectiveness of noise mitigation measures. The procedures to consult with the affected landowners delineated in figure 7 of Schedule 1 and defined by geographic coordinates in 	Prepare an Amenity (Noise) Condition Environmental Management Plan to meet the requirements of condition 15-3.	Amenity (Noise) Condition Environmental Management Plan.	Pre-Construction	Prior to the commencement of ground disturbing activities, or as otherwise agreed in writing by the CEO.	CLD	OEPA approval stated condition has been met, as reported in 2017 CAR (Coffey 2017).

MS

Compliance Assessment Report

NorthLink WA Perth-Darwin National Highway (Swan Valley Section)



Condition	Requirement	How	Evidence	Phase	Timeframe	Status	Further Information
	Schedule 2, regarding additional noise mitigation measures. <ul style="list-style-type: none"> The procedures for noise complaint management and a response framework. 						
Residual Impacts and Risk Management Measures							
MS 1116: M16-1	The objective of conditions 16-2 to 16-22 is to offset the following significant residual impacts: <ul style="list-style-type: none"> 4 ha of Threatened Ecological Community SCP 20a, 'Banksia attenuata woodlands over species rich dense shrublands'. 5.5 ha of Yanga Complex. 31.9 ha of Caladenia huegelii critical habitat. 129.9 ha of Bush Forever sites. 7.65 ha of A Class Nature Reserves. 207.2 ha of Calyptorhynchus latirostris (Carnaby's black cockatoo) foraging habitat. 120.5 ha of Calyptorhynchus banksii naso (Forest red-tailed black cockatoo) foraging habitat. 16 ha of Conservation Category Wetlands. 	Implement condition 16-2 to 16-22.	CAR.	Overall	During the implementation of the proposal.	CLD	<p>The Ippolo Road Site Land Acquisition and Management Plan, and <i>Caladenia huegelii</i> Habitat Management Plan, were approved by the OEPA as reported in the 2017 CAR (Coffey 2017).</p> <p>The SCP 20a Offsets Strategy was approved by DWER in May 2019 (L21-016) and the Land Acquisition and Rehabilitation Offsets Strategy was approved in January 2019 (L21-010).</p> <p>These management plans and strategies outline the offsets for the significant residual impacts. All documents are available on the Main Roads website (MRWA 2021).</p>

MS

Compliance Assessment Report

NorthLink WA Perth-Darwin National Highway (Swan Valley Section)



Condition	Requirement	How	Evidence	Phase	Timeframe	Status	Further Information
Ippollo Road Site Land Acquisition and Management Plan							
MS 1116: M16-2	Prior to the commencement of ground disturbing activities, or as otherwise agreed in writing by the CEO, the proponent shall submit an Ippollo Road Site Land Acquisition and Management Plan to the requirements of the CEO, with the objective of counterbalancing the significant residual impact to: <ul style="list-style-type: none"> • 7.65 ha of A Class Nature Reserves. • 202 ha of <i>Calyptorhynchus latirostris</i> (Carnaby's black cockatoo) foraging habitat. • 99.1 ha of <i>Calyptorhynchus banksii naso</i> (Forest red-tailed black cockatoo) foraging habitat. 	Prepare an Ippollo Road Site Land Acquisition and Management Plan.	Ippollo Road Site Land Acquisition and Management Plan. CEO approval.	Pre-construction	Prior to the commencement of ground disturbing activities, or as otherwise agreed in writing by the CEO.	CLD	Plan was approved 8/02/2017, as reported in the 2017 CAR (Coffey 2017).
MS 1116: M16-3	The Ippollo Road Site Land Acquisition and Management Plan shall: <ul style="list-style-type: none"> • Identify the environmental attributes of the land to be acquired which must contain: <ul style="list-style-type: none"> ○ At least 673.5 ha of <i>Calyptorhynchus latirostris</i> (Carnaby's black cockatoo) potential foraging habitat. ○ At least 279 ha of <i>Calyptorhynchus banksii naso</i> (Forest red-tailed black cockatoo) potential foraging habitat. • Detail the arrangements and funding for the upfront works associated with establishing the 	Prepare an Ippollo Road Site Land Acquisition and Management Plan that include the requirements in condition 16-3. Correspondence documenting advice from Department of Biodiversity, Conservation and Attractions on the Ippollo Road Site Land Acquisition and Management Plan.	Ippollo Road Site Land Acquisition and Management Plan.	Pre-construction	Prior to commencement of construction until the CEO advises implementation may cease.	CLD	OEPA approval stated condition has been met, as reported in the 2017 CAR (Coffey 2017).

MS

Compliance Assessment Report

NorthLink WA Perth-Darwin National Highway (Swan Valley Section)



Condition	Requirement	How	Evidence	Phase	Timeframe	Status	Further Information
	<p>conservation reserve and ongoing management of the land acquired on advice from the Department of Biodiversity, Conservation and Attractions;</p> <ul style="list-style-type: none"> Identify activities to be undertaken including improvement actions for areas identified as being in a degraded condition or cleared areas requiring rehabilitation; Detail timeframes for undertaking improvement actions and management activities; Identify roles and responsibilities of the proponent and any agreements with third parties; Detail completion criteria; and Include monitoring and reporting requirements. 						
MS 1116: M16-4	<p>After receiving notice in writing from the CEO that the loppolo Road Site Land Acquisition and Management Plan satisfies the requirements of condition 16-3, the proponent shall:</p> <ul style="list-style-type: none"> Prior to the commencement of ground disturbing activities, commence the implementation of the actions in accordance with the requirements of the approved loppolo Road Site Land Acquisition and Management Plan; and Continue to implement the approved loppolo Road Site Land Acquisition and Management Plan until the CEO has confirmed by 	Implement the CEO approved loppolo Road Site Land Acquisition and Management Plan.	CAR. Notice from CEO that implementation no longer required.	Pre-construction	Prior to the commencement of ground disturbing activities, or as otherwise agreed in writing by the CEO.	C	<p>The approved Plan has been implemented. The status of the following is "Completed" and as such based on commitment of management activities during 2017-2023 (Section 4.2 of the <i>loppolo Road Site Land Acquisition and Management Plan (2017)</i>). MRWA will be seeking closure of these requirements in 2025.</p> <p>A summary of actions undertaken by DBCA for the current reporting are outlined in Table 4 of Section 4.2.3.</p>

MS

Compliance Assessment Report

NorthLink WA Perth-Darwin National Highway (Swan Valley Section)



Condition	Requirement	How	Evidence	Phase	Timeframe	Status	Further Information
	notice in writing that it has been demonstrated that the completion criteria in the Ioppolo Road Site Land Acquisition and Management Plan have been met and therefore the implementation of the actions is no longer required.						
MS 1116: M16-5	The proponent shall acquire, or fully fund the acquisition of, the land identified in the approved Ioppolo Road Site Land Acquisition and Management Plan, as required by condition 16-2, for the purpose of conservation.	Fund acquisition of Ioppolo Road Site.	CAR. Notice of transfer of funds.	Pre-construction	Prior to commencement of ground disturbing activities.	CLD	Ground disturbing activities commenced on 31 March 2017. The approved Plan (January 2017) outlines that funding of land acquisition is complete, as reported in the 2017 CAR (Coffey 2017).
MS 1116: M16-6	The proponent shall review and revise the Ioppolo Road Site Land Acquisition and Management Plan as and when directed by the CEO.	Revise Ioppolo Road Site Land Acquisition and Management Plan as and when directed by the CEO.	Revised Ioppolo Road Site Land Acquisition and Management Plan.	Overall	As and when directed by the CEO.	C	The CEO has not required a review of the Ioppolo Road Land Acquisition and Management Plan
MS 1116: M16-7	The proponent shall implement the latest revision of the Ioppolo Road Site Land Acquisition and Management Plan, which the CEO has confirmed by notice in writing, satisfies the requirements of condition 16-2.	Implement the Revised Ioppolo Road Site Land Acquisition and Management Plan.	CAR.	Overall	After receiving written notice from the CEO that the Ioppolo Road Site Land Acquisition and Management Plan is satisfactory.	C	As for M16-2 to M16-5.

Compliance Assessment Report

NorthLink WA Perth-Darwin National Highway (Swan Valley Section)



Condition	Requirement	How	Evidence	Phase	Timeframe	Status	Further Information
Land Acquisition and Rehabilitation Offsets Strategy							
MS 1116: M16-8	<p>Within twelve months of the publication of this Statement, the proponent shall prepare and submit a Land Acquisition and Restoration Offsets Strategy to the CEO, with the objective of counterbalancing the significant residual impact to:</p> <ul style="list-style-type: none"> • 5.5 hectares of Yanga Complex. • 129.9 hectares of Bush Forever sites. • 5.2 hectares of <i>Calyptorhynchus latirostris</i> (Carnaby's black cockatoo) foraging habitat. • 21.4 hectares of <i>Calyptorhynchus banksii naso</i> (forest red-tailed black cockatoo) foraging habitat. • 16 hectares of Conservation Category Wetlands. 	Prepare a Land Acquisition and Restoration Offsets Strategy.	Land Acquisition and Restoration Offsets Strategy.	Overall	Within twelve months of the publication of MS 1036.	CLD	The initial draft Offset Strategy was submitted to DWER – EPA Services within 12 months of publication of MS 1036 as reported in the 2018 CAR (ELA 2018). The final Strategy was submitted and approved on 7 January 2019
MS 1116: M16-9	<p>The Land Acquisition and Restoration Offsets Strategy required by condition 16-8 shall:</p> <ul style="list-style-type: none"> • Identify an area or areas to be protected, managed and/or restored for conservation or enhancement of the values identified in condition 16-8. • Identify the area(s) of land to be acquired which must contain: <ul style="list-style-type: none"> ○ No less than 48 ha of wetlands which are of the same quality as Conservation Category Wetlands at the time of acquisition or after rehabilitation. ○ 181 ha with vegetation communities and/or complexes 	Include requirements of condition 16-9 into the Land Acquisition and Restoration Offsets Strategy.	Land Acquisition and Restoration Offsets Strategy. CEO approval.	Overall	Within twelve months of the publication of MS 1036.	CLD	As for M16-8.

MS

Compliance Assessment Report

NorthLink WA Perth-Darwin National Highway (Swan Valley Section)



Condition	Requirement	How	Evidence	Phase	Timeframe	Status	Further Information
	<p>and conditions commensurate with the Bush Forever sites being impacted.</p> <ul style="list-style-type: none"> ○ No less than 5.5 ha of Yanga Complex. • Include a completed WA Offsets Template, as described in the WA Environmental Offsets Guidelines 2014, as well as the Commonwealth's Offset Assessment Guide, to demonstrate how the proposed offset counterbalances the significant residual impact to: <ul style="list-style-type: none"> ○ 5.2 ha of <i>Calyptorhynchus latirostris</i> (Carnaby's black cockatoo) potential foraging habitat. ○ 21.4 ha of <i>Calyptorhynchus banksii naso</i> (forest red-tailed black cockatoo) potential foraging habitat. • Identify the environmental attributes of the offset area(s). • Commit to a protection mechanism for any areas of land acquisition, being either the area is ceded to the Crown for the purpose of conservation, or the area is managed under a Conservation Covenant in perpetuity. • If any land is to be ceded to the Crown for the purpose of conservation, the proponent will determine: <ul style="list-style-type: none"> ○ The quantum of, and provide funds for, the upfront works 						

MS

Compliance Assessment Report

NorthLink WA Perth-Darwin National Highway (Swan Valley Section)



Condition	Requirement	How	Evidence	Phase	Timeframe	Status	Further Information
	<p>associated with establishing the conservation area.</p> <ul style="list-style-type: none"> ○ The quantum of, and provide a contribution of funds for, the management of this area for no less than seven (7) years. ○ The quantum identified in conditions 16-9(6) (a) and 16-9(6) (b) shall provide for the requirements defined in condition 16-9(7) (a) to be met. ○ An appropriate management body for the ceded land. <p>• State the management and/or rehabilitation actions to be undertaken including:</p> <ul style="list-style-type: none"> ○ The objectives and targets to be achieved, including completion criteria. ○ The consistency of the objectives and targets identified in 16-9(7) (a) with the management objectives of the relevant Recovery Plans. ○ Management and/or rehabilitation actions and a timeframe for the actions to be undertaken. ○ Risk management. ○ Funding arrangements and timing of funding for conservation activities. ○ Monitoring, reporting and evaluation mechanisms for management and/or rehabilitation actions. 						

MS

Compliance Assessment Report

NorthLink WA Perth-Darwin National Highway (Swan Valley Section)



Condition	Requirement	How	Evidence	Phase	Timeframe	Status	Further Information
	<ul style="list-style-type: none"> Define the role of the proponent and/or any third parties. 						
MS 1116: M16-10	<p>After receiving notice in writing from the CEO that the Land Acquisition and Restoration Offsets Strategy satisfies the requirements of condition 16-9, the proponent shall:</p> <ul style="list-style-type: none"> Implement the actions in accordance with the requirements of the approved Land Acquisition and Restoration Offsets Strategy. Continue to implement the approved Land Acquisition and Restoration Offsets Strategy until the CEO has confirmed by notice in writing that it has been demonstrated that the completion criteria in the Land Acquisition and Restoration Offsets Strategy have been met and therefore the implementation of the actions is no longer required. 	Implement the Land Acquisition and Restoration Offsets Strategy after CEO approval and until the CEO confirms the implementation of the Strategy is no longer required.	CAR.	Overall	After CEO approval and until the CEO confirms the implementation of the Strategy is no longer required.	C	<p>The approved Strategy continues to be implemented and will continue until 2023</p> <p>A summary of actions undertaken by DBCA for the current reporting are outlined in Table 4 of Section 4.2.3.</p>
MS 1116: M16-11	The proponent shall review and revise the Land Acquisition and Restoration Offsets Strategy as and when directed by the CEO.	Revise the Land Acquisition and Restoration Offsets Strategy as directed by the CEO.	Revised Land Acquisition and Restoration Offsets Strategy.	Overall	As and when directed by the CEO.	C	The CEO has not required a review of the LAROS

Compliance Assessment Report

NorthLink WA Perth-Darwin National Highway (Swan Valley Section)



Condition	Requirement	How	Evidence	Phase	Timeframe	Status	Further Information
<i>Caladenia huegelii</i> Habitat Management Plan							
MS 1116: M16-12	Prior to commencement of ground disturbing activities, or as otherwise agreed in writing by the CEO, the proponent shall prepare and submit a <i>Caladenia huegelii</i> Habitat Management Plan to maintain or improve the conservation of <i>Caladenia huegelii</i> to the requirements of the CEO.	Prepare a <i>Caladenia huegelii</i> Habitat Management Plan that includes the information required by condition 16-14 and 16-16.	<i>Caladenia huegelii</i> Habitat Management Plan. CEO approval.	Pre-construction	Prior to commencement of ground disturbing activities, or as otherwise agreed in writing by the CEO.	CLD	Ground disturbing activities commenced on 31 March 2017. OEPA approval dated 15 March 2017 stated condition has been met, as reported in 2017 CAR (Coffey 2017).
MS 1116: M16-13	The proponent shall prepare the <i>Caladenia huegelii</i> Habitat Management Plan required by condition 16-12 on advice of the Department of Biodiversity, Conservation and Attractions.	Prepare a <i>Caladenia huegelii</i> Habitat Management Plan that includes the information required by condition 16-14 and 16-16.	<i>Caladenia huegelii</i> Habitat Management Plan. DBCA advice.	Pre-construction	Prior to commencement of ground disturbing activities, or as otherwise agreed in writing by the CEO.	CLD	OEPA approval stated condition has been met, as reported in 2017 CAR (Coffey 2017).

Compliance Assessment Report

NorthLink WA Perth-Darwin National Highway (Swan Valley Section)



Condition	Requirement	How	Evidence	Phase	Timeframe	Status	Further Information
MS 1116: M16-14	<p>The <i>Caladenia huegelii</i> Habitat Management Plan identified in condition 16-12, shall include details on the:</p> <ul style="list-style-type: none"> • Activities to be undertaken. • Consistency of the activities identified in 16-14(1) with the management objectives of the relevant Recovery Plan. • Timeframes for undertaking management activities. • Roles and responsibilities. • Funding arrangements for implementation of the plan. • Monitoring, reporting and evaluation mechanisms. • Completion criteria. 	Prepare a <i>Caladenia huegelii</i> Habitat Management Plan that includes the information required by condition 16-14 and 16-16.	<i>Caladenia huegelii</i> Habitat Management Plan	Pre-construction	Prior to commencement of ground disturbing activities, or as otherwise agreed in writing by the CEO.	CLD	As for M16-13.
MS 1116: M16-15	The <i>Caladenia huegelii</i> Habitat Management Plan required by condition 16-12 shall apply to A Class Nature Reserves 23756, 46919 and 46875, Bush Forever Site 300.	<i>Caladenia huegelii</i> Habitat Management Plan.	<i>Caladenia huegelii</i> Habitat Management Plan.	Pre-construction	During the implementation of the proposal.	CLD	As for M16-13.

MS

Compliance Assessment Report

NorthLink WA Perth-Darwin National Highway (Swan Valley Section)



Condition	Requirement	How	Evidence	Phase	Timeframe	Status	Further Information
MS 1116: M16-16	<p>The activities to be undertaken as identified in condition 16-14(1) shall address the requirement for:</p> <ul style="list-style-type: none"> • Provision of Cable fencing and heavy duty gates; • Weed mapping and control; • <i>Phytophthora cinnamomi</i> mapping; • The development of a hygiene plan based on the mapping as identified in condition 16-16(3); • <i>Caladenia huegelii</i> surveys and critical habitat mapping; and • Other activities to be undertaken that would maintain or improve the conservation status of <i>Caladenia huegelii</i>. 	Prepare a <i>Caladenia huegelii</i> Habitat Management Plan that includes the information required by condition 16-14 and 16-16.	<i>Caladenia huegelii</i> Habitat Management Plan.	Pre-construction	Prior to commencement of ground disturbing activities, or as otherwise agreed in writing by the CEO.	CLD	As for M16-13.
MS 1116: M16-17	Prior to commencement of ground disturbing activities, and after receiving notice in writing from the CEO on the advice of the Department of Biodiversity, Conservation and Attractions that the <i>Caladenia huegelii</i> Habitat Management Plan satisfies the requirements of conditions 16-13 to 16-16, or as otherwise agreed by the CEO, the proponent shall implement the <i>Caladenia huegelii</i> Habitat Management Plan until the CEO advises implementation may cease.	Implement the CEO approved <i>Caladenia huegelii</i> Habitat Management Plan.	CAR. Advice from CEO and DBCA.	Overall	Prior to commencement of ground disturbing activities, or as otherwise agreed by the CEO until the CEO advises implementation may cease.	C	The approved Plan continues has been implemented and completed. R24_012.

MS

Compliance Assessment Report

NorthLink WA Perth-Darwin National Highway (Swan Valley Section)



Condition	Requirement	How	Evidence	Phase	Timeframe	Status	Further Information
MS 1116: M16-18	The proponent shall review and revise the <i>Caladenia huegelii</i> Habitat Management Plan as and when directed by the CEO.	Revise the <i>Caladenia huegelii</i> Habitat Management Plan Strategy as directed by the CEO.	Revised <i>Caladenia huegelii</i> Habitat Management Plan.	Overall	As and when directed by the CEO.	C	<p>The <i>Caladenia huegelii</i> Habitat Management Plan was revised and subsequently approved by the CEO on 13 March 2019</p> <p>The CEO has not requested a review or revision of the <i>Caladenia huegelii</i> Habitat Management Plan within the current reporting period</p>
SCP 20a Offset Strategy							
MS 1116: M16-19	The proponent shall undertake an offset with the objective of counterbalancing the significant residual impact to: 4 ha of Threatened Ecological Community SCP 20a, 'Banksia attenuata woodlands over species rich dense shrublands' as a result of the implementation of the proposal.	Prepare and implement the SCP 20a Offsets Strategy.	SCP 20a Offsets Strategy. CAR.	Overall	Develop the SCP 20a Offsets Strategy within twelve months of the publication of MS 1036. Implement SCP Offsets Strategy until the CEO has confirmed by notice in writing that criteria have been met.	C	The SCP 20a Offset Strategy has been developed and was subsequently approved by the CEO as of 20 May 2019
MS 1116: M16-20	Within twelve months of the publication of this Statement, the proponent shall prepare and submit an SCP 20a Offsets Strategy to the CEO. The SCP 20a Offsets Strategy shall: <ul style="list-style-type: none"> Identify an area or areas to be protected, managed and/or rehabilitated for conservation or enhancement of SCP 20a, or habitat necessary to maintain or enhance 	Prepare a SCP 20a Offsets Strategy.	SCP 20a Offsets Strategy.	Overall	Within twelve months of the publication of MS 1036.	CLD	The SCP 20a Offsets Strategy was approved on 20 May 2019.

Compliance Assessment Report

NorthLink WA Perth-Darwin National Highway (Swan Valley Section)



Condition	Requirement	How	Evidence	Phase	Timeframe	Status	Further Information
	<p>SCP 20a, identified in condition 16-19(1);</p> <ul style="list-style-type: none"> include a completed WA Offsets Template, as described in the WA Environmental Offsets Guidelines 2014, as well as the Commonwealth's Offset Assessment Guide, to demonstrate how the proposed offset counterbalances the significant residual impact. Identify the environmental attributes of the offset area(s). Commit to a protection mechanism for any areas of land acquisition, being either the area is ceded to the Crown for the purpose of conservation, or the area is managed under a Conservation Covenant in perpetuity. If any land is to be ceded to the Crown for the purpose of conservation, the proponent will identify: <ul style="list-style-type: none"> The quantum of, and provide funds for, the upfront works associated with establishing the conservation area. The quantum of, and provide a contribution of funds for, the management of this area for no less than seven (7) years. The quantum identified in conditions 16-20(5) (a) and 16-20(5) (b) shall provide for the requirements defined in condition 16-20(6) (a) to be met. 						

MS

Compliance Assessment Report

NorthLink WA Perth-Darwin National Highway (Swan Valley Section)



Condition	Requirement	How	Evidence	Phase	Timeframe	Status	Further Information
	<ul style="list-style-type: none"> ○ An appropriate management body for the ceded land. • State the management and/or rehabilitation actions to be undertaken including: <ul style="list-style-type: none"> ○ The objectives and targets to be achieved, including completion criteria. ○ Management and/or rehabilitation actions and a timeframe for the actions to be undertaken. ○ Funding arrangements and timing of funding for conservation activities. ○ Monitoring, reporting and evaluation mechanisms for management and/or rehabilitation actions. • Define the role of the proponent and/or any third parties. 						
MS 1116: M16-21	<p>After receiving notice in writing from the CEO that the SCP 20a Offsets Strategy satisfies the requirements of condition 16-20, the proponent shall:</p> <ul style="list-style-type: none"> • Implement the actions in accordance with the requirements of the approved SCP 20a Offsets Strategy. <p>Continue to implement the approved SCP 20a Offsets Strategy until the CEO has confirmed by notice in writing that it has been demonstrated that the completion criteria in the SCP 20a Offsets Strategy have been met and</p>	Implement the SCP 20a Offsets Strategy as required by condition 16-21.	CAR.	Overall	After receiving CEO approval and until the CEO confirms implementation of the SCP 20a Offsets Strategy is no longer required.	C	<p>The approved Strategy continues to be implemented and will continue until 2023</p> <p>A summary of actions undertaken by DBCA for the current reporting are outlined in Table 4 of Section 4.2.3.</p>

Compliance Assessment Report

NorthLink WA Perth-Darwin National Highway (Swan Valley Section)



Condition	Requirement	How	Evidence	Phase	Timeframe	Status	Further Information
	therefore the implementation of the actions is no longer required.						
MS 1116: M16-22	The proponent shall review and revise the SCP 20a Offsets Strategy as and when directed by the CEO.	Review the SCP 20a Offsets Strategy as and when directed by the CEO.	Revised SCP 20a Offsets Strategy.	Overall	As and when directed by the CEO.	C	The SCP 20a Offsets Strategy was approved on 20 May 2019 The CEO has not directed that the Strategy be revised

References used in **Appendix B**:

Coffey Service Australia Pty Ltd (Coffey) 2017, *Compliance Assessment Report Perth-Darwin National Highway (Swan Valley Section)* Perth.

Eco Logical Australia (ELA) 2018, *Compliance Assessment Report Perth-Darwin National Highway (Swan Valley Section)* Perth

Main Roads Western Australia (MRWA) 2023, <https://www.mainroads.wa.gov.au/community-environment/environment/construction-project-compliance-reports/>

Appendix C

Supporting / Verifying Information



Compliance Assessment Report

NorthLink WA Perth-Darwin National Highway (Swan Valley Section)



Table C1: Supporting / Verifying Information

Type of information	Unique code	Document title/Information description
Email	E24_01	Northlink WA CAR 2023
Email	E24_02	DWER email response to close conditions 9, 10, 12 and 14
Email	E24_03	MRWA 2024 CAR Evidence folder
Email	E24_04	Ioppolo NR Reports
Email	E24_05	Compliance with Noise Complaints Register
Letter	L24_01	DWER response to close conditions 9, 10 and 12
Letter	L24_02	DWER response to close condition 14
Letter	L24_03	Post construction hydrological monitoring exceedances March 2024
Letter	L24_04	Reporting under condition 8-4 water quality monitoring and exceedances
Report	R24_01	Noise Monitoring report
Report	R24_02	LAROS SCP20a White Road Orange Grove Report
Report	R24_03	LAROS SCP20a Lot 252 Mealup, Errina Rd and Hawkvale
Report	R24_04	Post construction monitoring CEMP exceedances report
Report	R24_05	2023 CAR
Report	R24_06	Lot 806 2024 Monitoringn Rev A report
Report	R24_07	Beechboro Monitoring report 2024 Rev A
Report	R24_08	Monitoring report for Flora and Vegetation
Report	R24_09	Ioppolo Reserve Feral Bee Report 2024
Report	R24_10	Lake Clifton and Carrabungup Offset Report
Report	R24_11	Lake Clifton and Carrabungup Offset Report
Report	R24_12	Caladenia Huegleii Management Plan

Report Title
Project Title

