



mainroads  
WESTERN AUSTRALIA

# Revegetation Publication Report

MWG0005

*We're working for  
Western Australia.*

# Contents

1	PURPOSE .....	3
2	SCOPE .....	3
3	SITE MAP.....	2
4	SITE PHOTOS.....	3
5	APPENDICES .....	2
	Appendix 1: Species list.....	3
	Table 3 – Species List for Revegetation (tubestock) .....	3

# Document Control

<b>Owner</b>	Regional Manager – Mid West Gascoyne
<b>Custodian</b>	Environmental Officer – Mid West Gascoyne
<b>Document Number</b>	D20#1019267
<b>Issue Date</b>	December 2020

# Amendments

Revision Number	Revision Date	Description of Key Changes	Section / Page No.
0		Document Release	
1			

## 1 PURPOSE

This Revegetation Publication Report provides additional information on MWG0005.

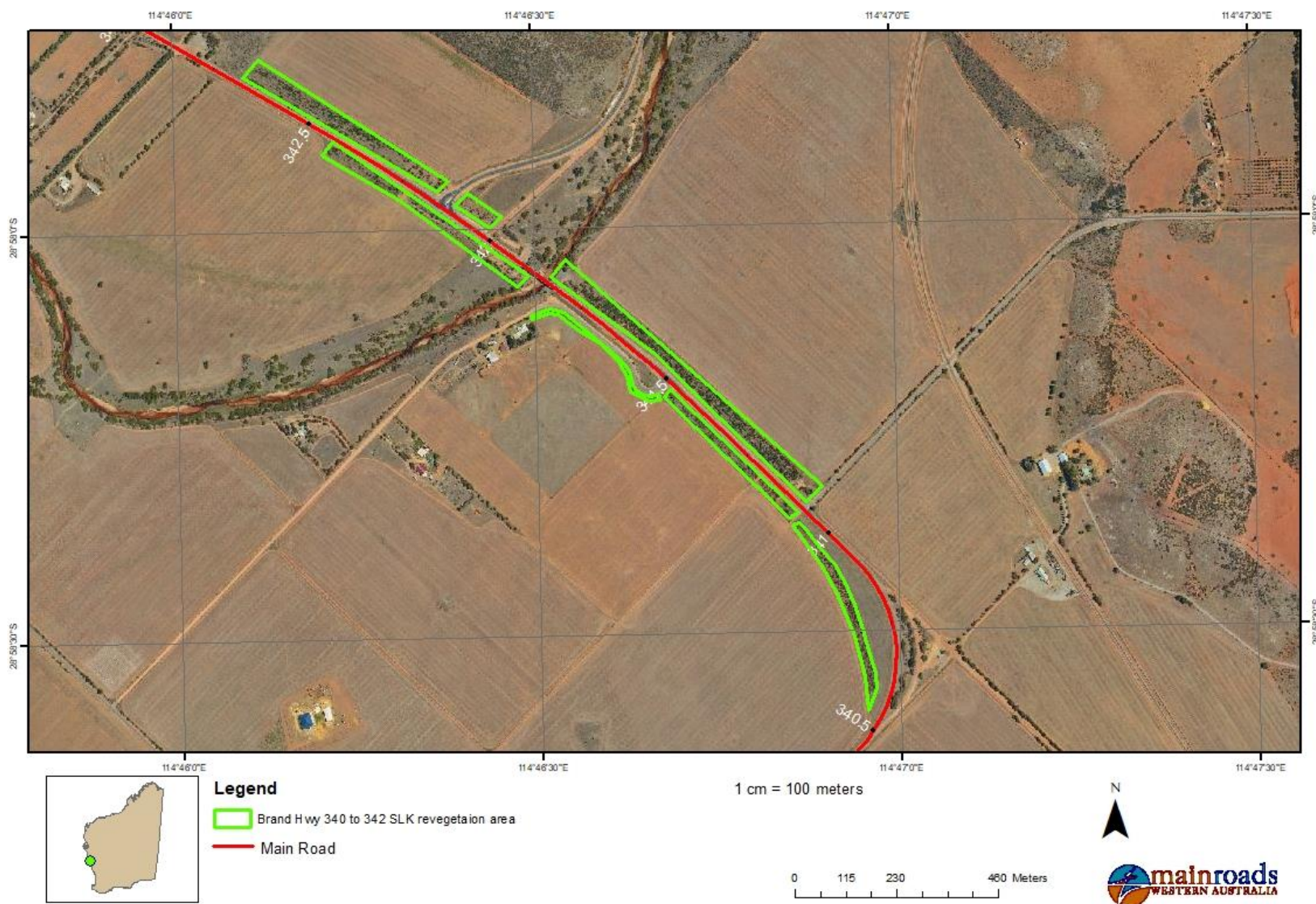
## 2 SCOPE

The 6ha was revegetated on Brand Highway between 340.5-342.7 SLK, as a compliance requirement for the Brand Highway Realignment and Greenough River Bridge Replacement.

**Table 1: Main Roads Landscaping / Revegetation Details**

<b>Main Roads Region</b>	Mid West Gascoyne
<b>Road Name</b>	Brand Highway
<b>Road Number</b>	H004
<b>Local Government</b>	City of Greater Geraldton
<b>Start SLK</b>	340.5
<b>End SLK</b>	342.7
<b>Central GPS Coordinates</b>	<ul style="list-style-type: none"> <li>Latitude (N): -28.9675305840515</li> <li>Longitude (E): 114.775409099307</li> </ul>
<b>Reference Number</b>	MWG0005
<b>Type of Method Undertaken</b>	Revegetation
<b>Area of Method Undertaken</b>	6ha
<b>Year(s) Method Occurred</b>	2014 and 2015
<b>Brief description</b>	Planting was conducted in September 2014 with infill planting and weed control occurred in May/June 2015 where an additional 6472 tubestock was planted. Mowing works occurred September 2016 and weed control for targeting crownbeard occurred in January 2017. Photo monitoring commenced in 2014 and is still occurring annually.
<b>Species used</b>	Refer to Appendix 1

### 3 SITE MAP



**Figure 1: Revegetation Location 340.5-342.7 SLK**



## 4 SITE PHOTOS



**Figure 2: Pre Revegetation looking north 2010**





**Figure 3: Post Revegetation Monitoring 2014**





**Figure 4: Post Revegetation Monitoring 2018**





**Figure 5: Post Revegetation Monitoring 2019**





**Figure 6: Post Revegetation Monitoring 2020**

# 5 APPENDICES

Appendix	Title
Appendix 1	Species List



## Appendix 1: Species list

Table 3 – Species List for Revegetation (tubestock)

<b>Brand Highway</b>
<i>Acacia cyclops</i>
<i>Acacia oxyclada</i>
* <i>Acacia rostellifera</i>
* <i>Acacia saligna</i>
<i>Adriana quadripartita</i>
<i>Alyogyne hakeifolia</i>
<i>Alyogyne huegelii</i>
<i>Alyogyne pinoniana</i>
<i>Alyxia buxifolia</i>
<i>Acanthocarpus preissii</i>
* <i>Casuarina obesa</i>
* <i>Eucalyptus camaldulensis</i> subsp. <i>Obtuse</i>
<i>Exocarpos sparteus</i>
<i>Grevillea argyrophylla</i>
* <i>Juncus kraussii</i>
<i>Melaleuca cardiophylla</i>
* <i>Melaleuca raphiophylla</i>
<i>Pimelea microcephala</i>
* <i>Pittosporum ligustrifolium</i>
<i>Portulaca filifolia</i>
<i>Rhagodia baccata</i>
<i>Rhagodia preissii</i> subsp. <i>obovata</i>
* <i>Salsola australis</i>
<i>Solanum lasiophyllum</i>
<i>Solanum orbiculatum</i>
<i>Stylobasium australe</i>
<i>Threlkeldia diffusa</i>